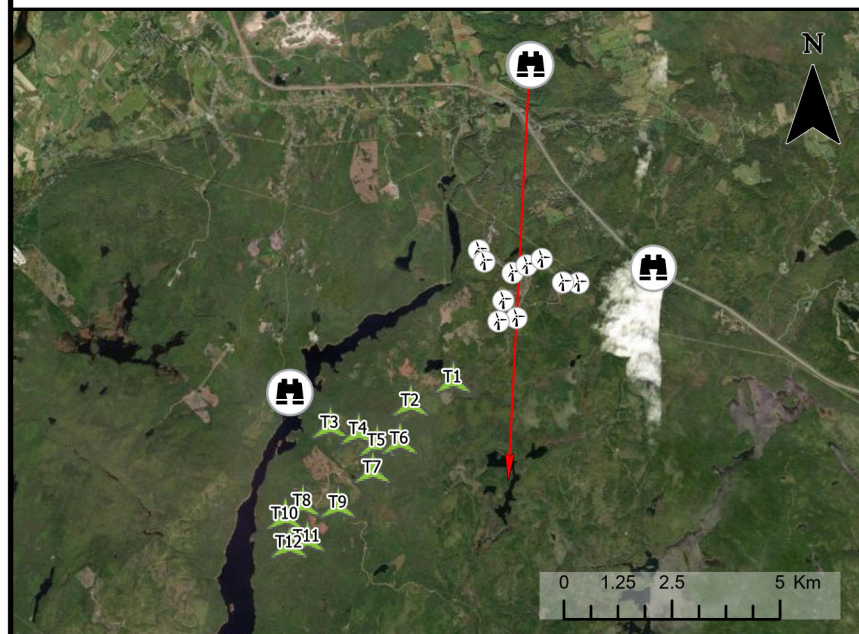





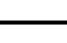




## Ellershouse 3 Wind Project Visual Simulation - North of Weir Brook

**strum**  
CONSULTING



- Camera Locations 
- Camera Bearing (183°) 
- Proposed Turbine Locations 
- Existing Ellershouse Turbines 
- Turbines Visible (Proposed) 
- Ellershouse I & II (Existing) 

**Notes:**  
 Coordinate System: NAD83 UTM Zone 20N  
 Sources: ESRI Basemaps, GeoNOVA, NSTD, HERE, Garmin, USGS, NRCan

### TECHNICAL INFORMATION

Visual Simulation Location: North of Weir Brook - Rocks Road  
 View Coordinates: Latitude: 44° 58' 21.468" N  
 Longitude: 64° 00' 54.958" W  
 Easting: 419943 m  
 Northing: 4980411 m  
 Direction of View: Southwest, Heading 183°  
 Camera Make/Model: Canon EOS Rebel T7  
 Lens: 50 mm  
 Image Resolution: 6000 X 4000  
 Weather Conditions: Sun, Clear Skies  
 Date of Photo: 2022/10/11  
 Time of Photo: 10:39  
 Photo Credit: Strum Consulting

Date: May 2023

Project #: 20-7536

Scale: 1:175,000

Drawing #: **10.2F**

Drawn By: M. Partridge

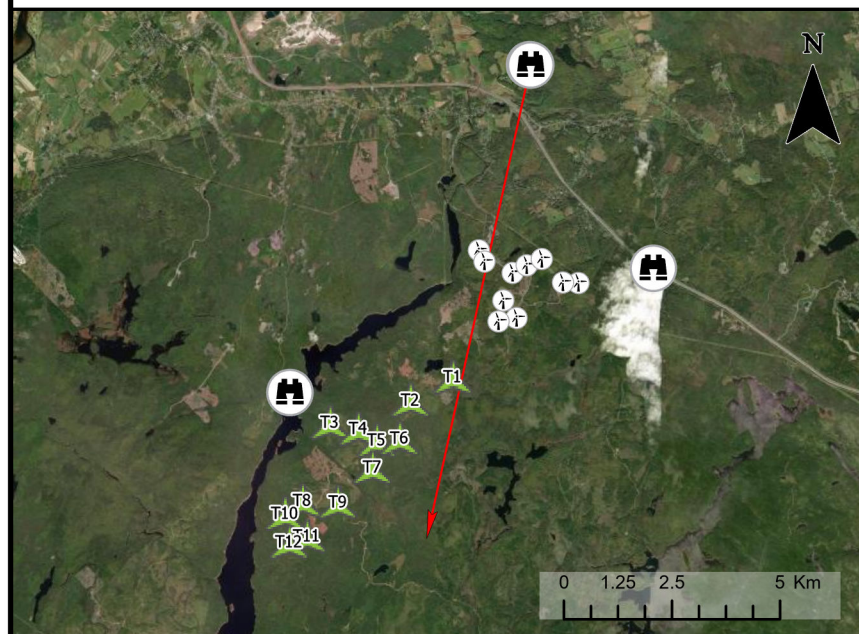
Checked By: M. Savelle





## Ellershouse 3 Wind Project Visual Simulation - North of Weir Brook

**strum**  
CONSULTING



- Camera Locations
- Camera Bearing (192°)
- Proposed Turbine Locations
- Existing Ellershouse Turbines
- Turbines Visible (Proposed)
- Ellershouse I & II (Existing)

**Notes:**  
 Coordinate System: NAD83 UTM Zone 20N  
 Sources: ESRI Basemaps, GeoNOVA, NSTD, HERE, Garmin, USGS, NRCan

### TECHNICAL INFORMATION

Visual Simulation Location: North of Weir Brook - Rocks Road  
 View Coordinates: Latitude: 44° 58' 21.216" N  
 Longitude: 64° 00' 53.662" W  
 Easting: 419972 m  
 Northing: 4980403 m  
 Direction of View: Southwest, Heading 192°  
 Camera Make/Model: Canon EOS Rebel T7  
 Lens: 50 mm  
 Image Resolution: 6000 X 4000  
 Weather Conditions: Sun, Clear Skies  
 Date of Photo: 2022/10/11  
 Time of Photo: 10:42  
 Photo Credit: Strum Consulting

Date:  
May 2023

Project #:  
20-7536

Scale:  
1:175,000

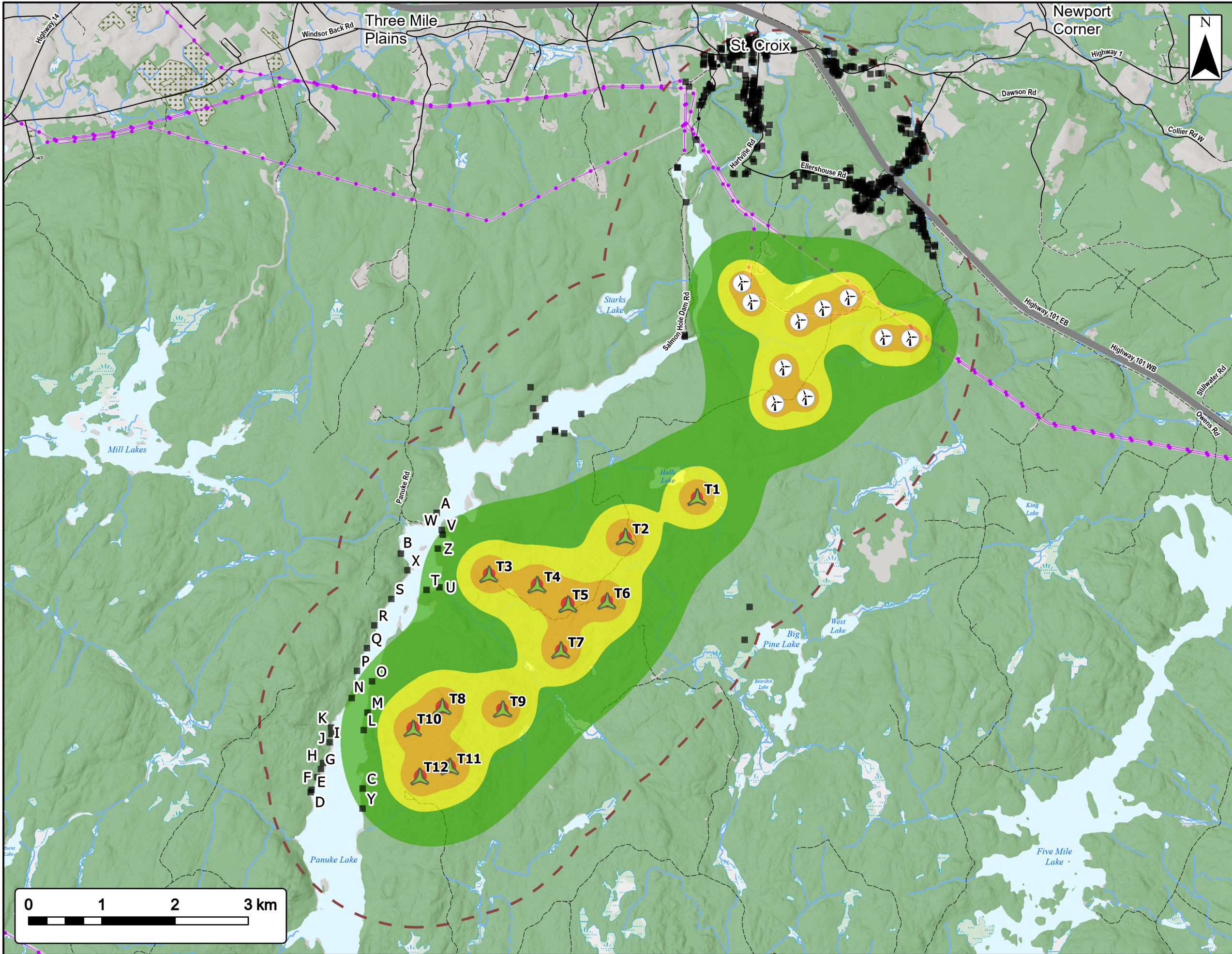
Drawing #:

Drawn By:  
M. Partridge

**10.2G**

Checked By:  
M. Savelle





# Ellershouse 3 Wind Project

## Noise Model



- Proposed Turbine Locations
- Existing Ellershouse Turbines
- Non Participating Receptors within 2 km of Assessment Area
- 2 km Assessment Area Buffer
- Predicted Noise Level (dBA)**
- 35-39
- 40-44
- 45-49
- 50+
- Transportation**
- Highway
- Road
- Unpaved Road
- Utilities (line)**
- Existing Pipeline
- Existing Transmission Lines
- Water Features**
- Mapped Stream
- Mapped Indefinite Stream
- Mapped Lakes and Rivers
- Mapped Wet Area



Coordinate System: NAD83 UTM Zone 20N Sources: ESRI Basemaps, GeoNOVA, NSTD, HERE, Garmin, USGS, NRCAN

Date: May 2023	Project #: 20-7536
Scale: 1:50,000	Drawing #: <b>10.3</b>
Drawn By: M. Partridge	<b>10.3</b>
Checked By: M. Savelle	

