

Ellershouse 3 Wind Project

Receptors



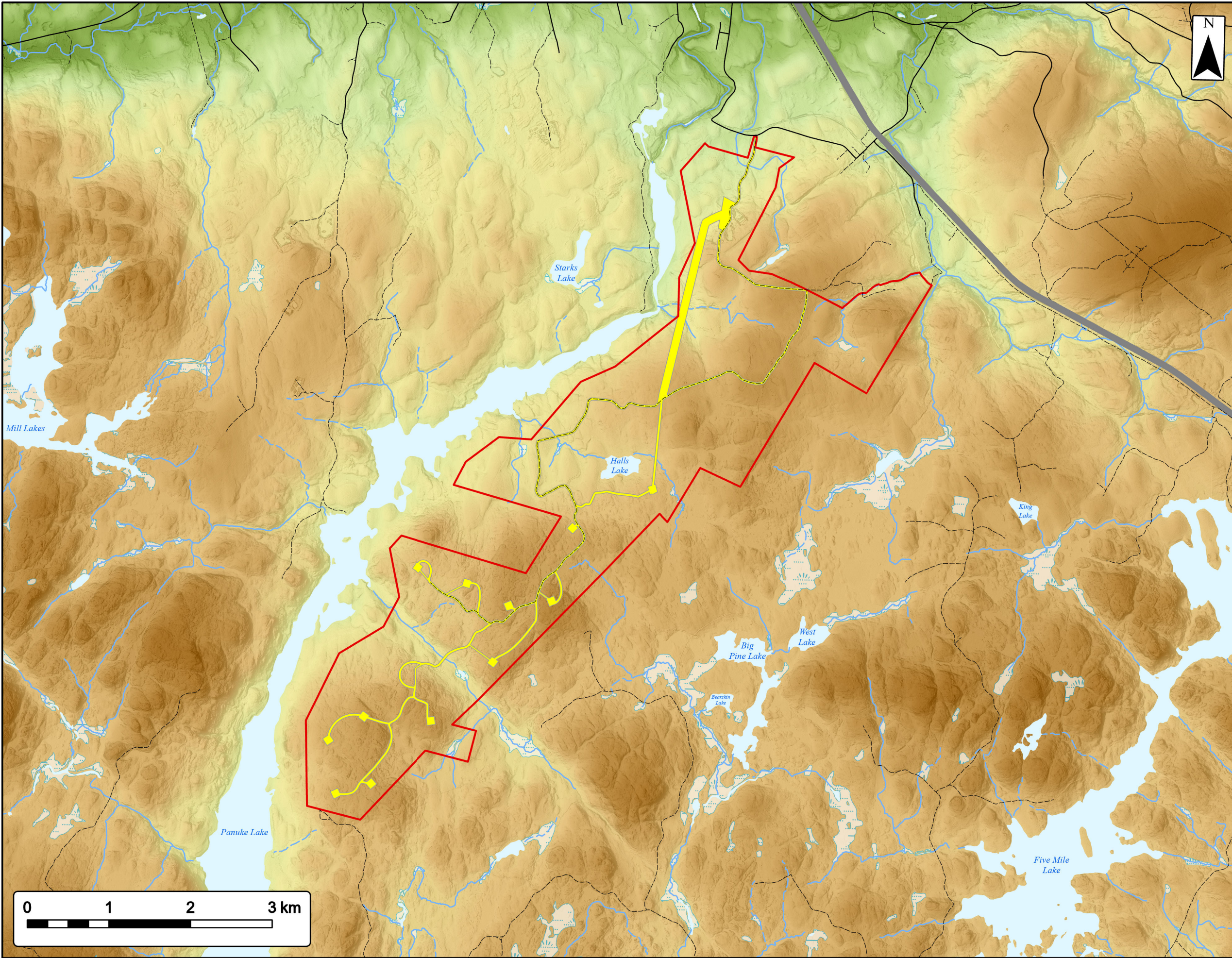
- Proposed Turbine Locations
- Study Area
- Assessment Area
- Non Participating Buildings within 2 km of the Assessment Area
- 2 km Assessment Area Buffer
- Transportation**
- Highway
- Road
- Unpaved Road
- Water Features**
- Mapped Stream
- Mapped Indefinite Stream
- Mapped Lakes and Rivers
- Mapped Wet Area



Coordinate System: NAD83 UTM Zone 20N Sources: ESRI Basemaps, GeoNOVA, NSDT, HERE, Garmin, USGS, NRCan


Date: May 2023	Project #: 20-7536
Scale: 1:50,000	Drawing #: 7.2
Drawn By: M. Partridge	7.2
Checked By: M. Savelle	







Ellershouse 3 Wind Project
Geomorphology

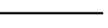



Study Area 

Assessment Area 

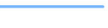
Transportation


Highway 


Road 

Unpaved Road 

Water Features

Mapped Stream 

Mapped Indefinite Stream 

Mapped Lakes and Rivers 

Elevation (Meters ASL)

235


170

125

85

40

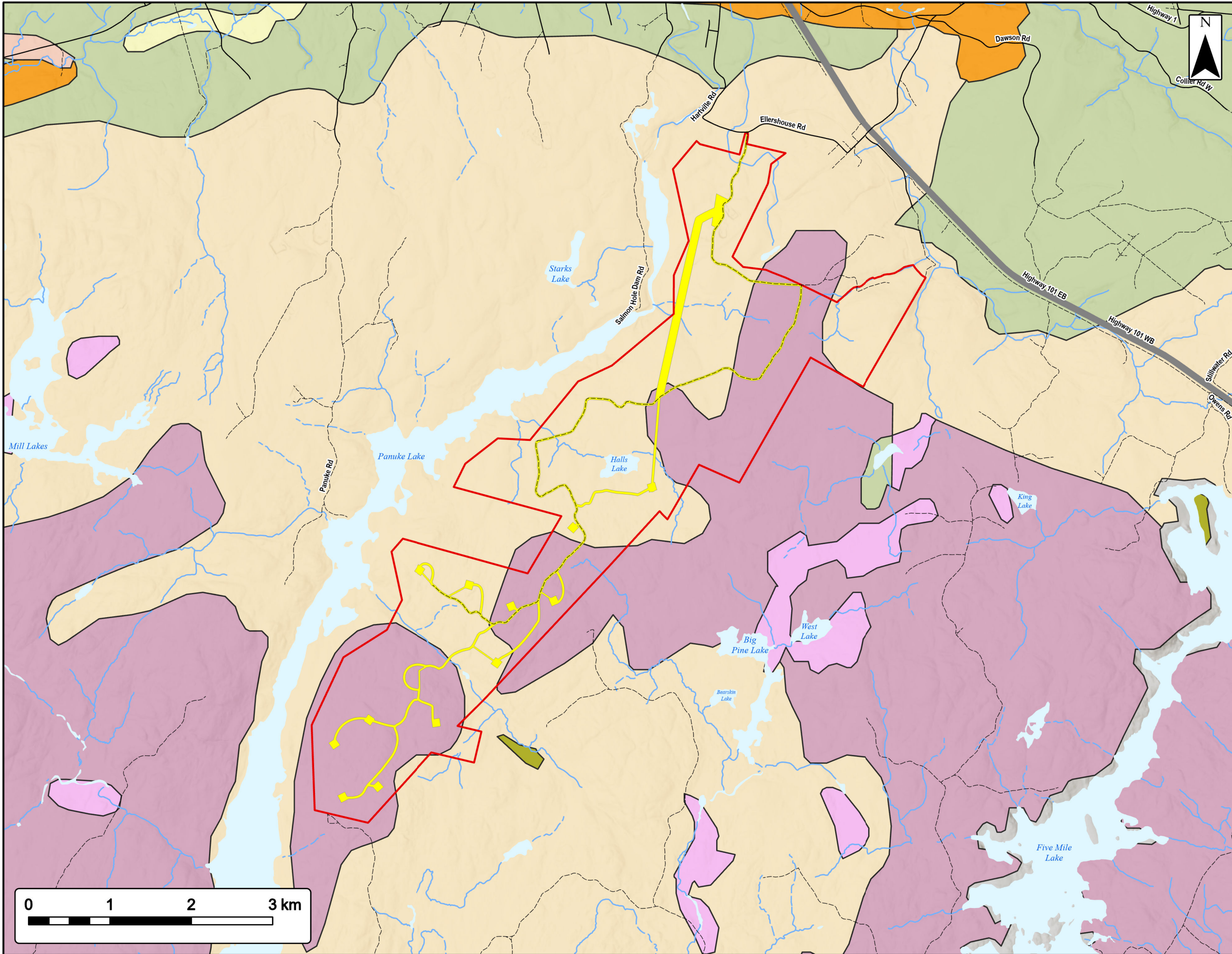
0




Coordinate System: NAD83 UTM Zone 20N Sources: ESRI Basemaps, GeoNOVA, NSTD, HERE, Garmin, USGS, NRCan

Date:	May 2023	Project #:	20-7536
Scale:	1:45,000	Drawing #:	7.3
Drawn By:	M. Partridge		
Checked By:	M. Savelle		





Ellershouse 3 Wind Project
Surficial Geology

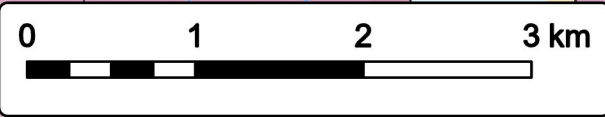


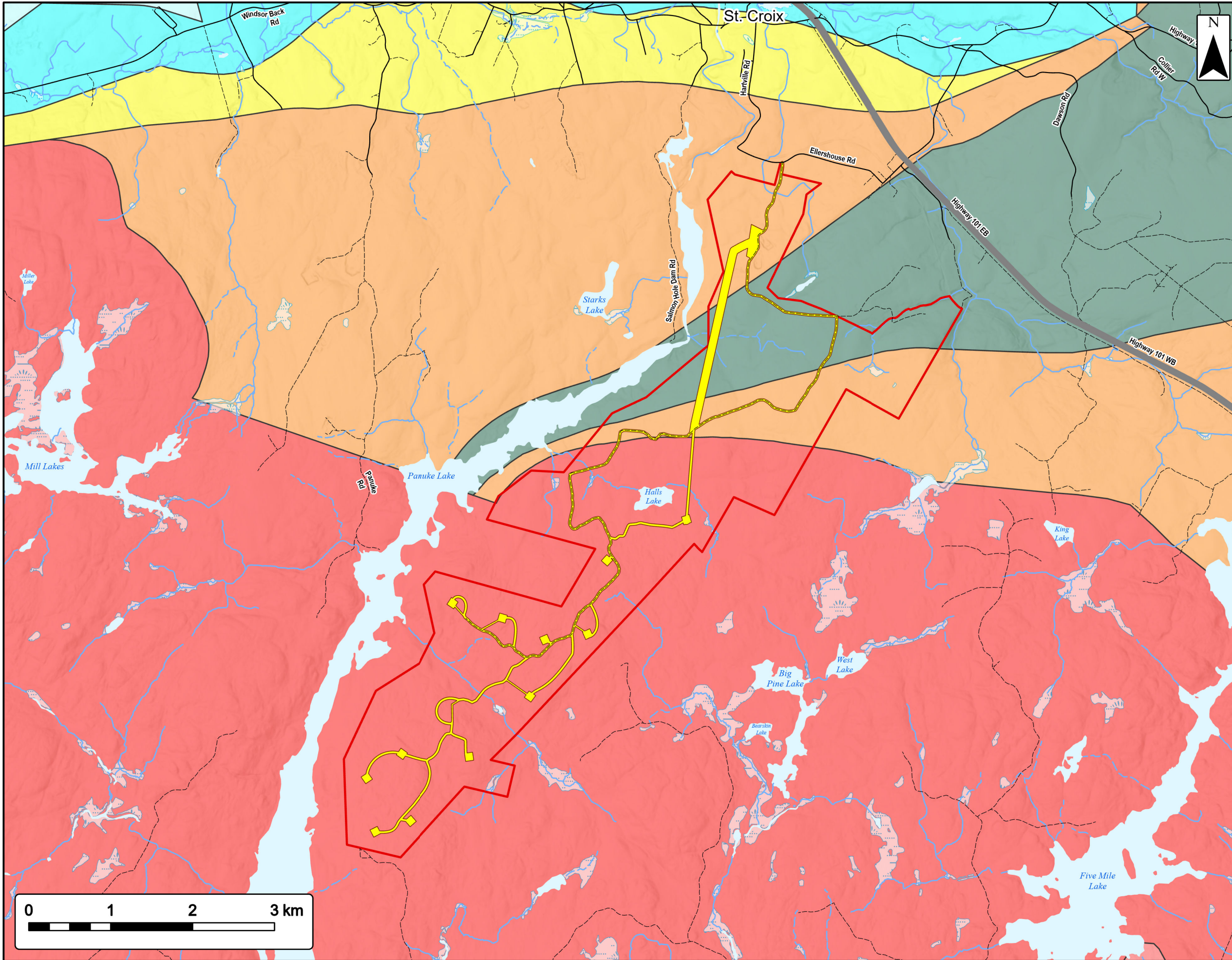
- Study Area
- Assessment Area
- Surficial Geology By Unit**
- Alluvial Deposits
- Bedrock
- Kame Fields and Esker Systems
- Organic Deposits
- Outwash fans, Deltas, and Valley Train Deposits
- Silty Drumlin
- Stony Till Plain
- Silty Till
- Transportation**
- Highway
- Road
- Unpaved Road
- Water Features**
- Mapped Stream
- Mapped Indefinite Stream
- Mapped Lakes and Rivers



Coordinate System: NAD83 UTM Zone 20N Sources: ESRI Basemaps, GeoNOVA, NSTD, HERE, Garmin, USGS, NRCAN


Date: May 2023	Project #: 20-7536
Scale: 1:45,000	Drawing #: 7.4
Drawn By: M. Partridge	
Checked By: M. Savelle	













Ellershouse 3 Wind Project
Bedrock Geology






Study Area 

Assessment Area 





Bedrock Geology By Formation

- Wentworth Station, Miller Creek, MacDonald Road and Elderbank Formations 
- White Quarry, Steviacke, Carrolls Corner, Macumber and Gays River Formations 
- Horton Group: southern mainland 
- Halifax Formation 
- Goldenville Formation 
- Middle - Late Devonian Granodiorite 
- Middle - Late Devonian muscovite biotite monzogranite 

Transportation

- Highway 
- Road 
- Unpaved Road 

Water Features

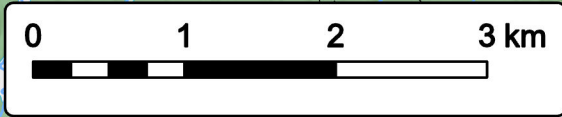
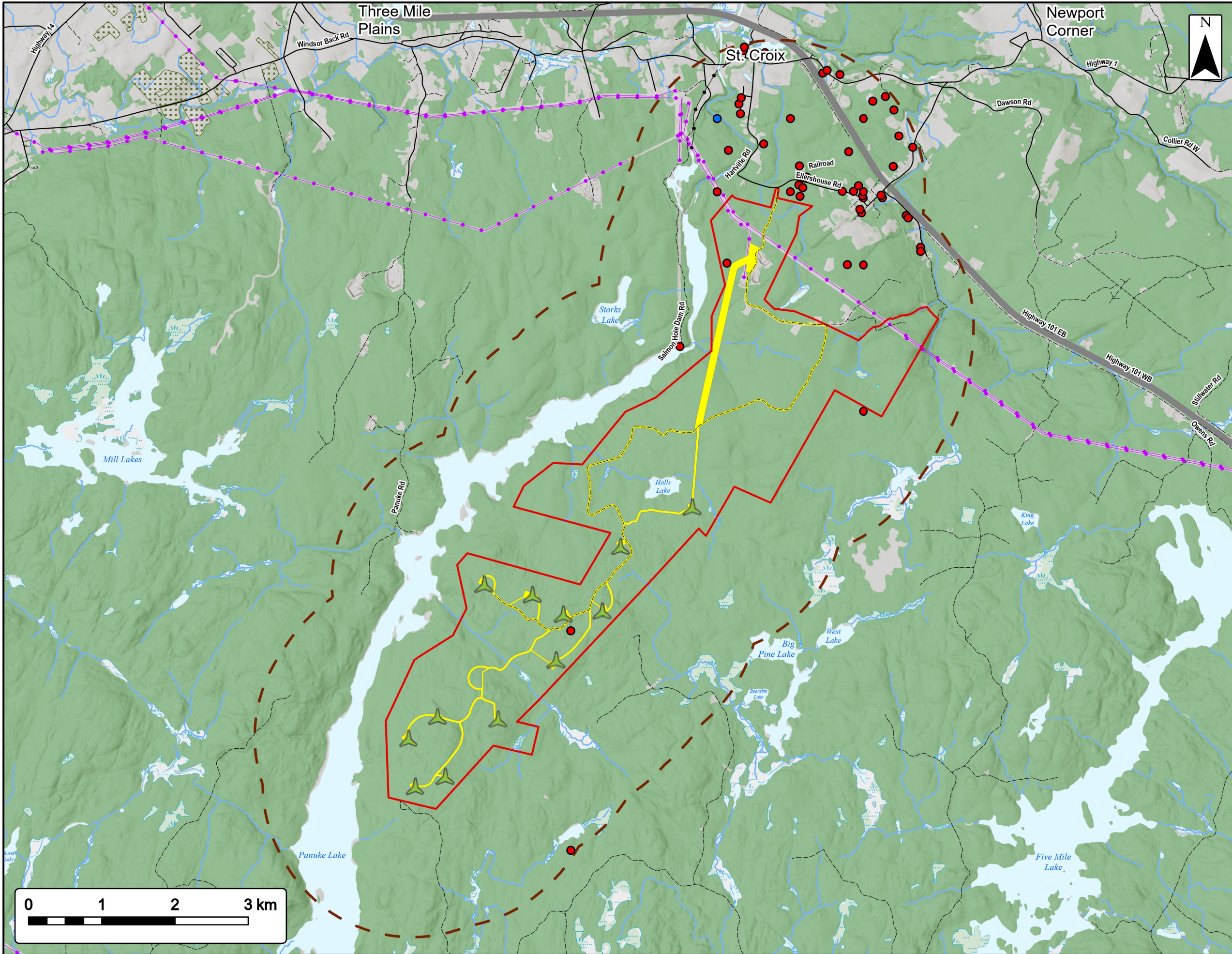
- Mapped Stream 
- Mapped Indefinite Stream 
- Mapped Lakes and Rivers 
- Mapped Wet Area 



Coordinate System: NAD83 UTM Zone 20N Sources: ESRI Basemaps, GeoNOVA, NSTD, HERE, Garmin, USGS, NRCAN

Date:	May 2023	Project #:	20-7536
Scale:	1:45,000	Drawing #:	7.5
Drawn By:	M. Partridge		
Checked By:	M. Savelle		





Ellershouse 3 Wind Project

Groundwater Wells



- Study Area
- Assessment Area
- Proposed Turbine Locations
- 2km Assessment Area Buffer
- Groundwater Wells Within 2 km of Assessment Area**
- Drilled
- Dug
- Transportation**
- Highway
- Road
- Unpaved Road
- Utilities (line)**
- Existing Pipeline
- Existing Transmission Lines
- Water Features**
- Mapped Stream
- Mapped Indefinite Stream
- Mapped Lakes and Rivers
- Mapped Wet Area



Coordinate System: NAD83 UTM Zone 20N Sources: ESRI Basemaps, GeoNOVA, NSTD, HERE, Garmin, USGS, NRCAN

Date: May 2023	Project #: 20-7536
Scale: 1:50,000	Drawing #: 7.6
Drawn By: M. Partridge	
Checked By: M. Savelle	

