

**Ellershouse 3 Wind Project**  
 Primary and Secondary Watersheds

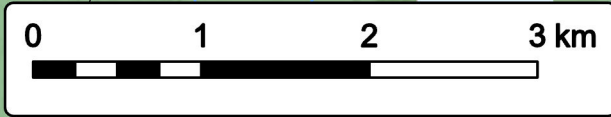


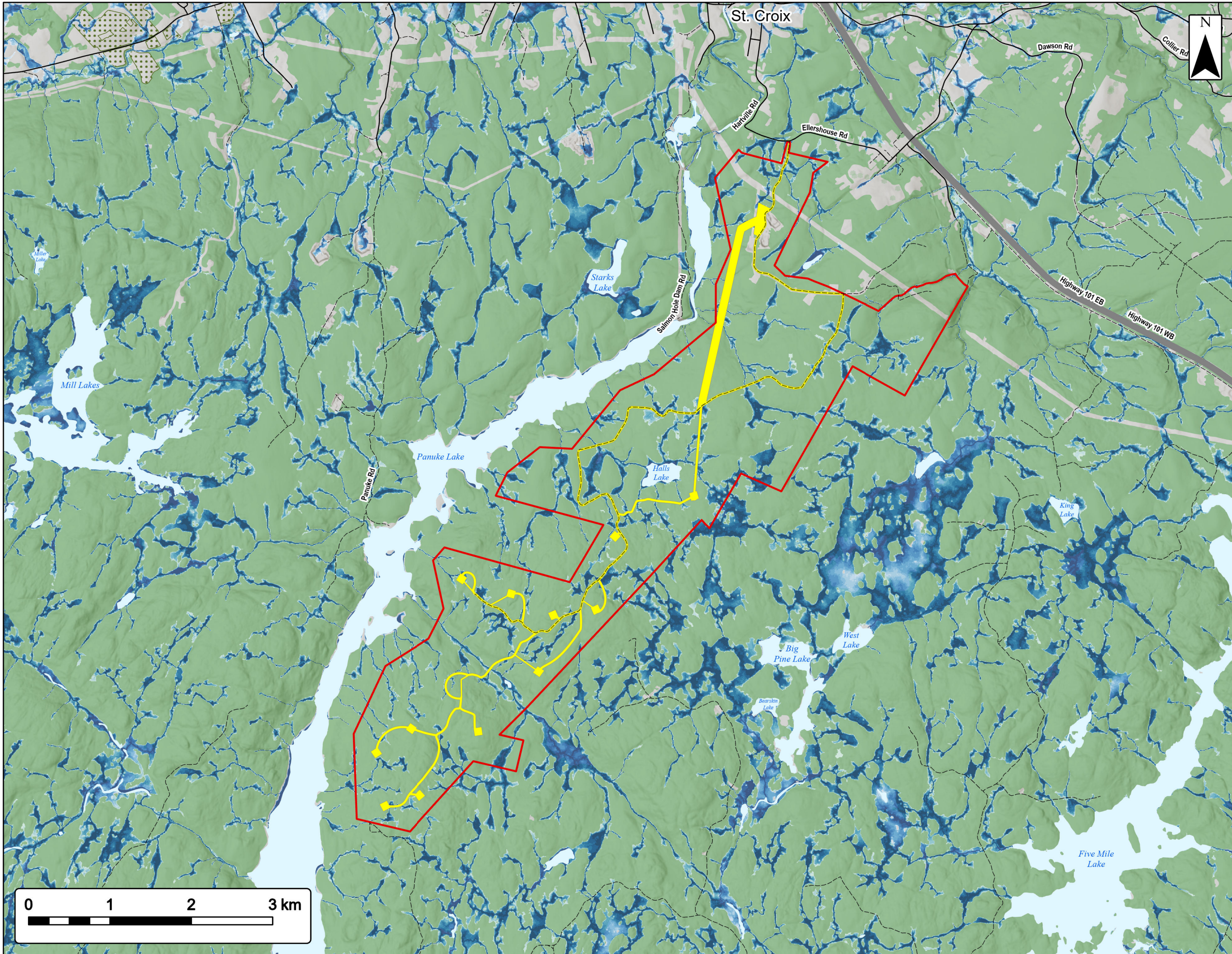
Study Area	
Assessment Area	
Primary Watershed Boundary	
Secondary Watershed Boundary	
<b>Transportation</b>	
Highway	
Road	
Unpaved Road	
<b>Utilities (line)</b>	
Existing Pipeline	
Existing Transmission Lines	
<b>Water Features</b>	
Mapped Stream	
Mapped Indefinite Stream	
Mapped Lakes and Rivers	
Mapped Wet Area	



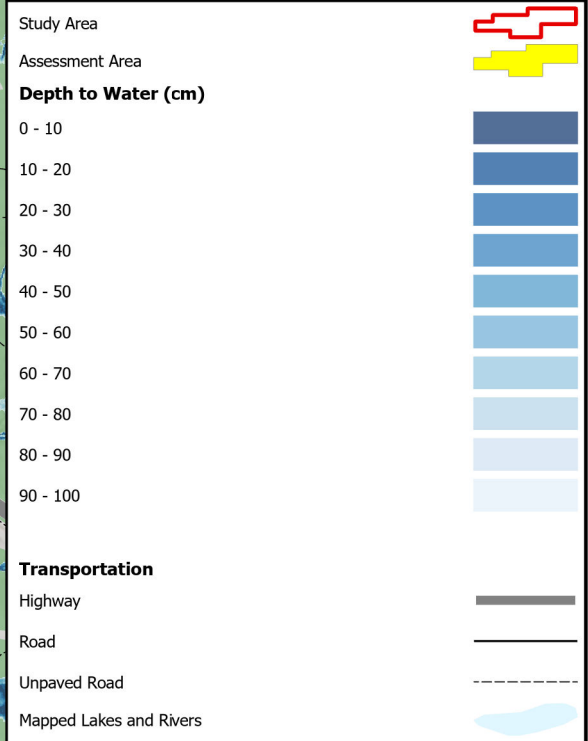
Coordinate System: NAD83 UTM Zone 20N  
 Sources: ESRI Basemaps, GeoNOVA, NSTD, HERE, Garmin, USGS, NRCan

Date:	May 2023	Project #:	20-7536
Scale:	1:45,000	Drawing #:	<b>7.12</b>
Drawn By:	M. Partridge		
Checked By:	M. Savelle		



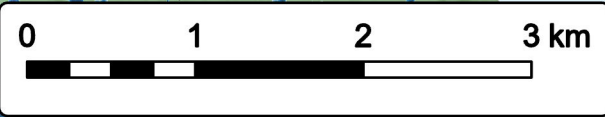


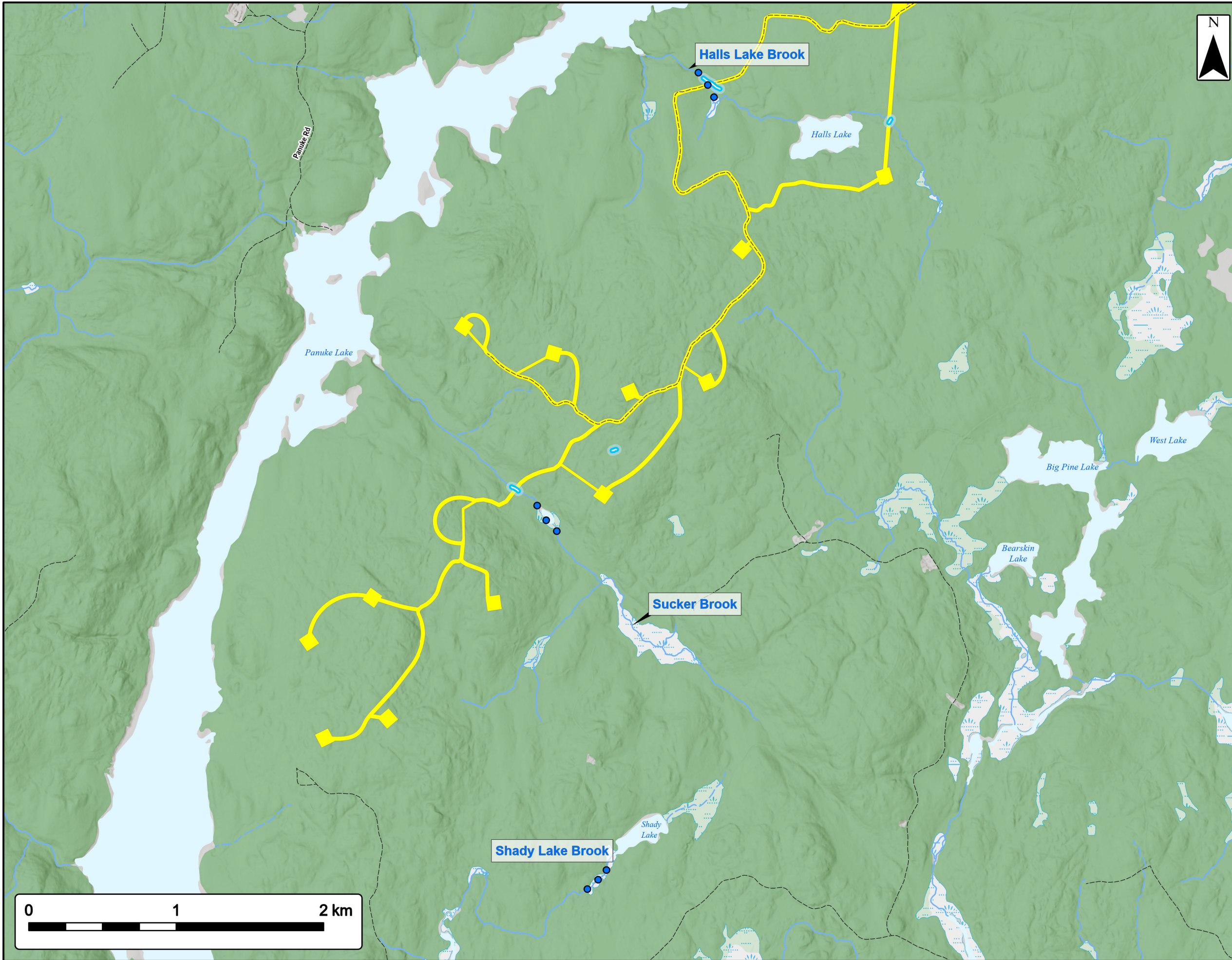
**Ellershouse 3 Wind Project**  
Wet Area Mapping



Coordinate System: NAD83 UTM Zone 20N  
Sources: ESRI Basemaps, GeoNOVA, NSTD, HERE, Garmin, USGS, NRCAN

Date:	May 2023	Project #:	20-7536
Scale:	1:45,000	Drawing #:	<b>7.13</b>
Drawn By:	M. Partridge		
Checked By:	M. Savelle		





**Ellershouse 3 Wind Project**  
Field Assessed Fish Habitat



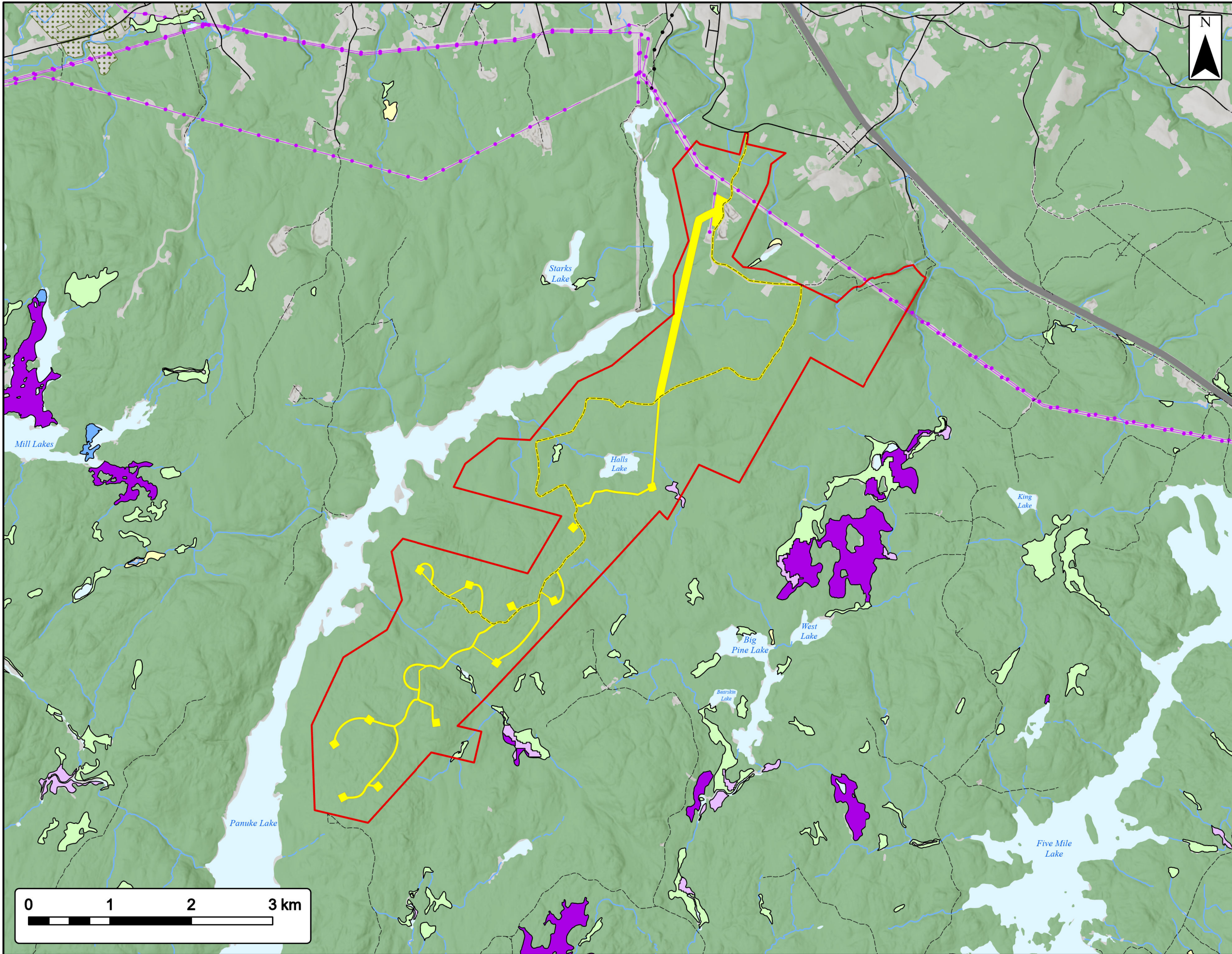
Assessment Area	
Electrofished Pt. Locations	
Field Assessed Watercourses (WC)	
<b>Transportation</b>	
Unpaved Road	
<b>Water Features</b>	
Mapped Stream	
Mapped Indefinite Stream	
Mapped Lakes and Rivers	
Mapped Wet Area	



Coordinate System: NAD83 UTM Zone 20N  
Sources: ESRI Basemaps, GeoNOVA, NSTD, HERE, Garmin, USGS, NRCan

Date:	May 2023	Project #:	20-7536
Scale:	1:25,000	Drawing #:	<b>7.14</b>
Drawn By:	M. Partridge	Checked By:	





**Ellershouse 3 Wind Project**  
NSNRR Wetlands Data



Study Area	
Assessment Area	
<b>NSNRR Wetland Inventory</b>	
Bog or Fen	
Fen	
Marsh	
Swamp	
Water	
<b>Transportation</b>	
Highway	
Road	
Unpaved Road	
<b>Utilities (line)</b>	
Existing Pipeline	
Existing Transmission Lines	
<b>Water Features</b>	
Mapped Stream	
Mapped Indefinite Stream	
Mapped Lakes and Rivers	



Coordinate System: NAD83 UTM Zone 20N  
Sources: ESRI Basemaps, GeoNOVA, NSTD, HERE, Garmin, USGS, NRCan

Date:	May 2023	Project #:	20-7536
Scale:	1:45,000	Drawing #:	<b>7.15</b>
Drawn By:	M. Partridge		
Checked By:	M. Savelle		

