

Ellershouse 3 Wind Project
 Vascular ACCDC Data and Significant Species/Habitat



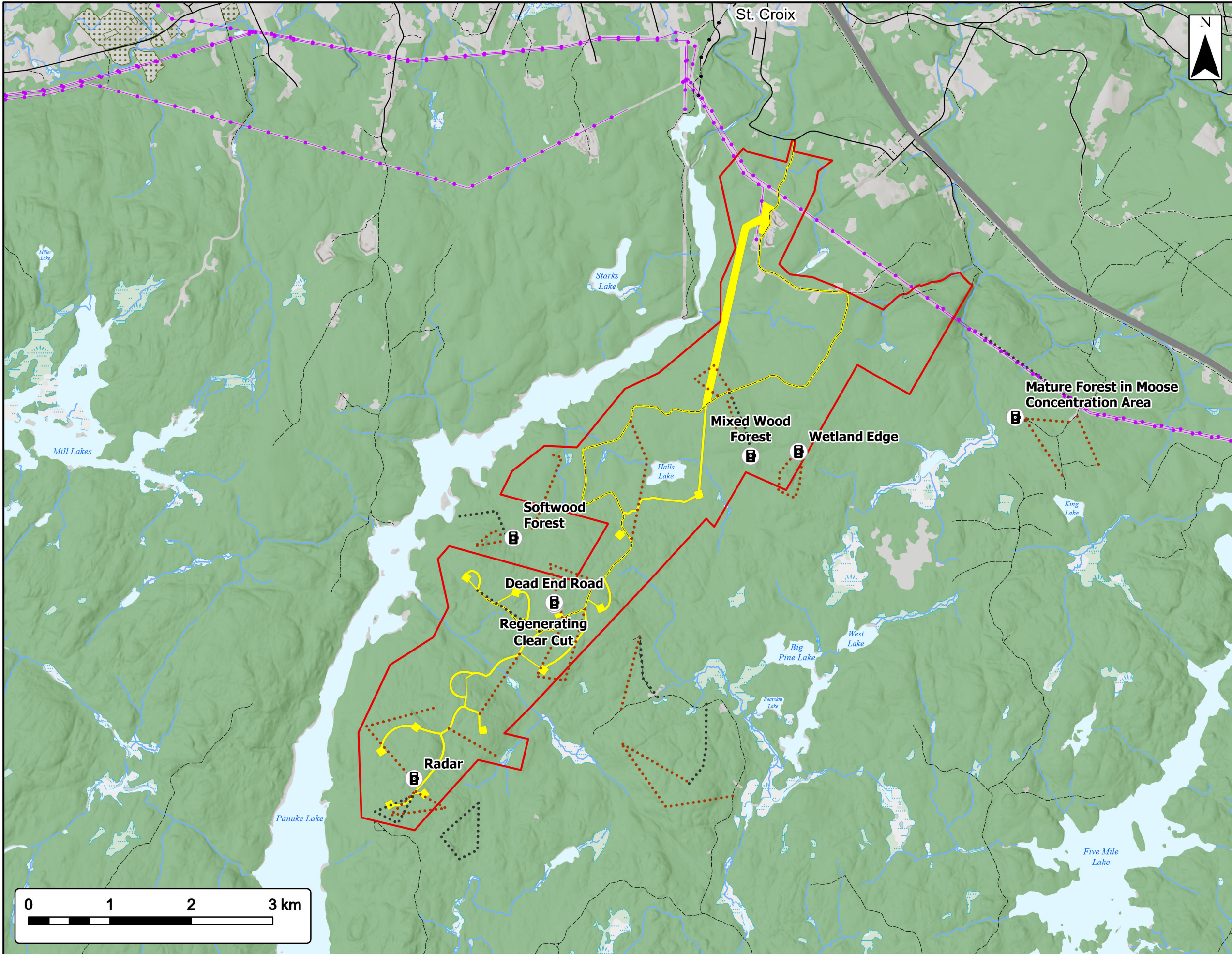
Study Area	
Assessment Area	
ACCDC Pt. Data	
Vascular Flora	
Significant Species & Habitats (NSNRR)	
Other Habitat	
Species at Risk	
Transportation	
Highway	
Road	
Unpaved Road	
Utilities (line)	
Existing Pipeline	
Existing Transmission Lines	
Water Features	
Mapped Stream	
Mapped Indefinite Stream	
Mapped Lakes and Rivers	
Mapped Wet Area	



Coordinate System: NAD83 UTM Zone 20N Sources: ESRI Basemaps, GeoNOVA, NSTD, HERE, Garmin, USGS, NRCAN

Date:	May 2023	Project #:	20-7536
Scale:	1:45,000	Drawing #:	7.18B
Drawn By:	M. Partridge		
Checked By:	M. Savelle		





St. Croix



Ellershouse 3 Wind Project
Field Transects and Trail Camera Locations



Study Area	
Assessment Area	
Trail Camera Locations	
Pellet Survey Transect	
Winter Tracking Survey Transect	
Transportation	
Highway	
Road	
Unpaved Road	
Utilities (line)	
Existing Pipeline	
Existing Transmission Lines	
Water Features	
Mapped Stream	
Mapped Indefinite Stream	
Mapped Lakes and Rivers	
Mapped Wet Area	

Mature Forest in Moose Concentration Area

Mixed Wood Forest

Wetland Edge

Softwood Forest

Dead End Road

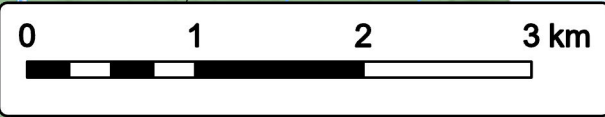
Regenerating Clear Cut

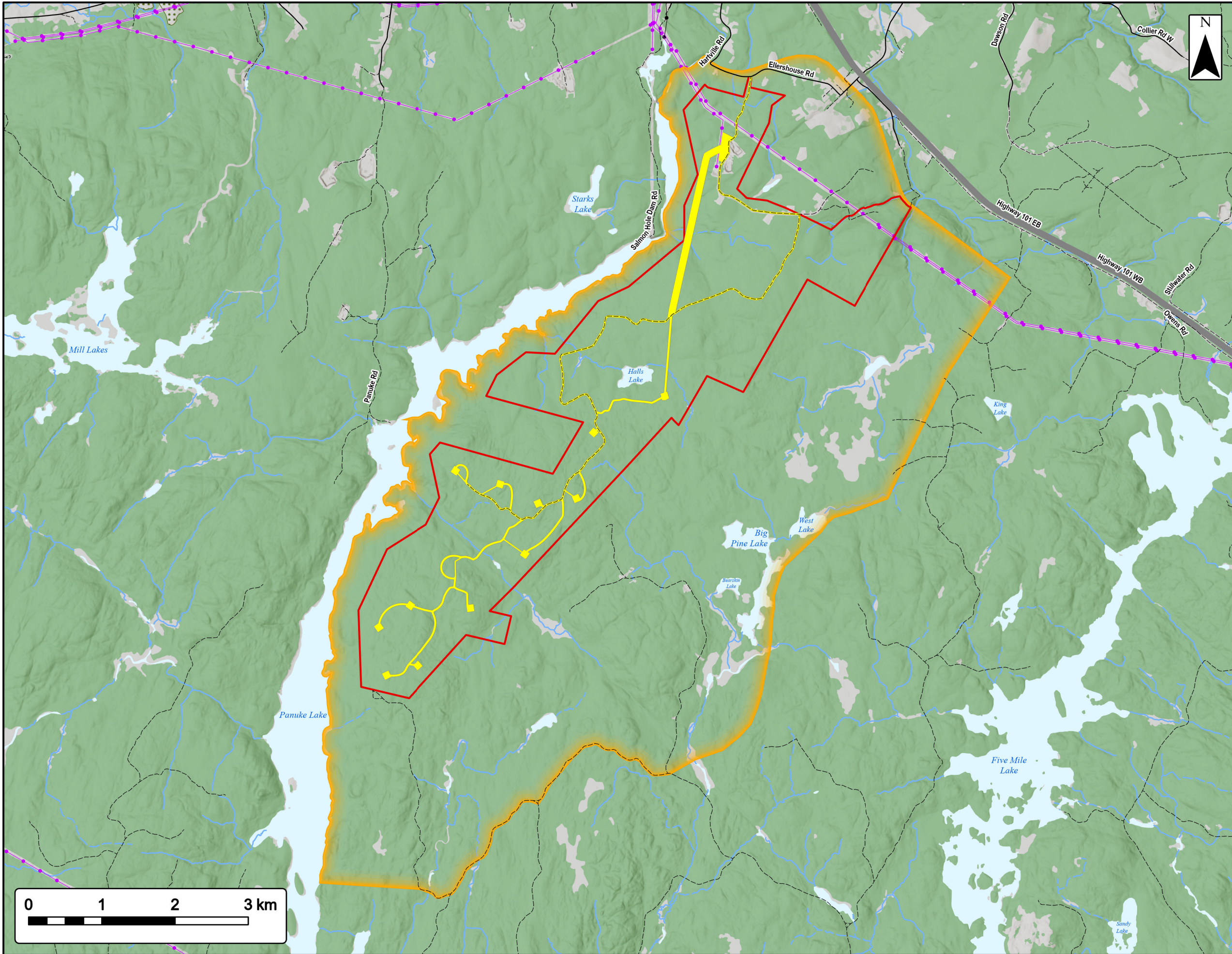
Radar



Coordinate System: NAD83 UTM Zone 20N Sources: ESRI Basemaps, GeoNOVA, NSTD, HERE, Garmin, USGS, NRCAN

Date:	May 2023	Project #:	20-7536
Scale:	1:45,000	Drawing #:	7.19
Drawn By:	M. Partridge		
Checked By:	M. Savelle		





Ellershouse 3 Wind Project
Fauna RAA

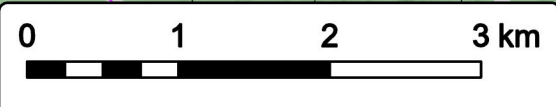


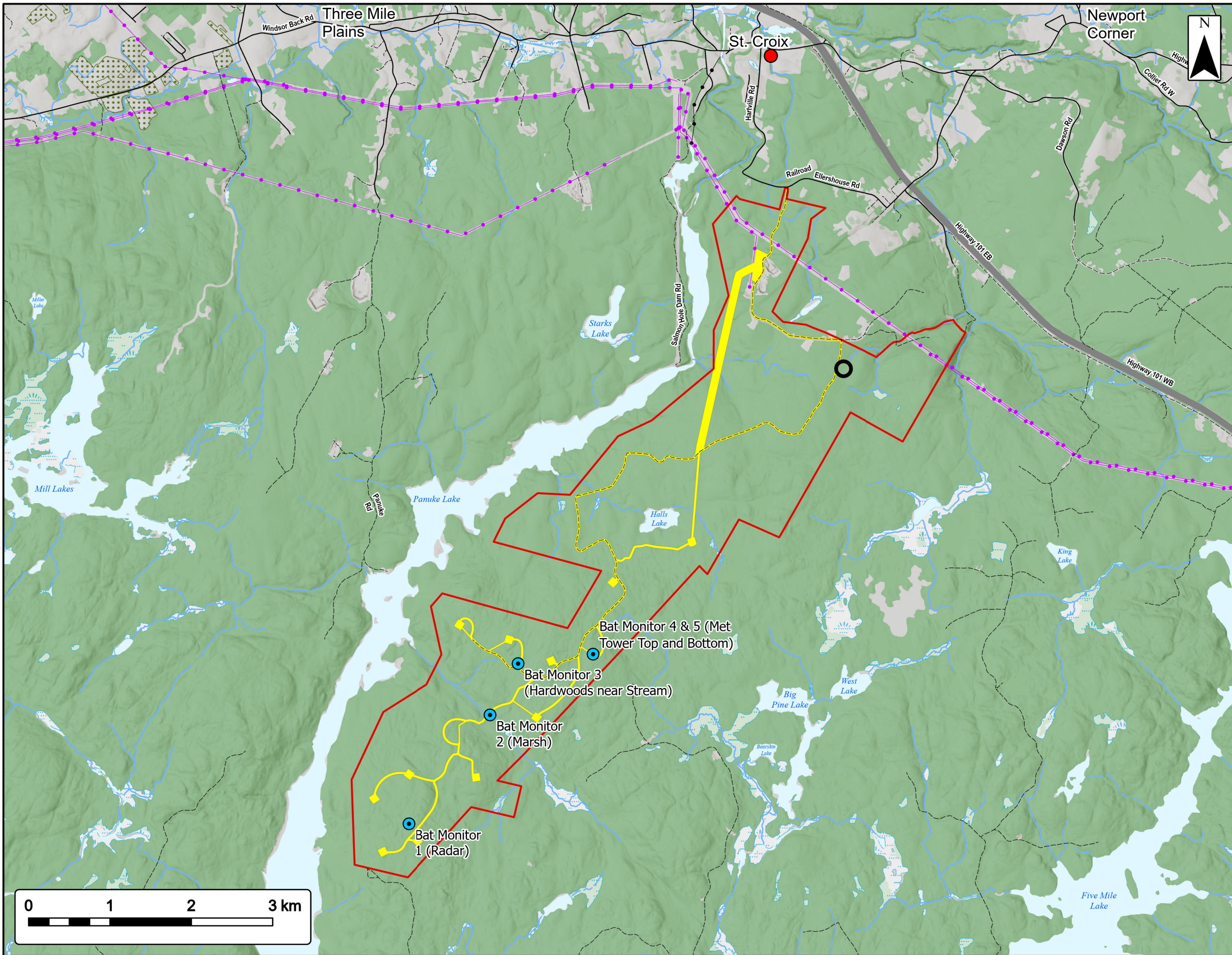
Study Area	
Assessment Area	
Regional Assessment Area	
Transportation	
Highway	
Road	
Unpaved Road	
Utilities (line)	
Existing Pipeline	
Existing Transmission Lines	
Water Features	
Mapped Stream	
Mapped Indefinite Stream	
Mapped Lakes and Rivers	



Coordinate System: NAD83 UTM Zone 20N
Sources: ESRI Basemaps, GeoNOVA, NSTD, HERE, Garmin, USGS, NRCAN

Date:	May 2023	Project #:	20-7536
Scale:	1:50,000	Drawing #:	7.20
Drawn By:	M. Partridge		
Checked By:	M. Savelle		





Ellershouse 3 Wind Project
Bat Assessment



Study Area	
Assessment Area	
Bat Monitoring Location	
Known Bat Hibernacula	
Abandoned Mine Openings (AMO)	
Shaft	
Transportation	
Highway	
Road	
Unpaved Road	
Utilities (line)	
Existing Pipeline	
Existing Transmission Lines	
Water Features	
Mapped Stream	
Mapped Indefinite Stream	
Mapped Lakes and Rivers	
Mapped Wet Area	



Coordinate System: NAD83 UTM Zone 20N		Sources: ESRI Basemaps, GeoNOVA, NSTD, HERE, Garmin, USGS, NRCAN	
Date:	May 2023	Project #:	20-7536
Scale:	1:45,000	Drawing #:	7.21
Drawn By:	M. Partridge		
Checked By:	M. Savelle		

