


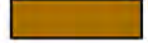

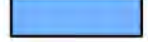


NSNRR Wetland Inventory
 Overview of NSNRR Wetlands
 Comparison to 5 km Buffer (Study Area)





5 km Buffer (Study Area) 

NSNRR Wetland Inventory

Bog or Fen	
Fen	
Marsh	
Salt Marsh	
Swamp	
Water	

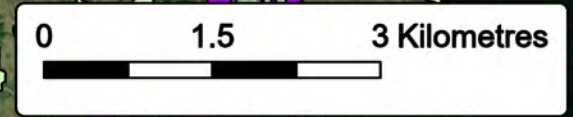
Project Components

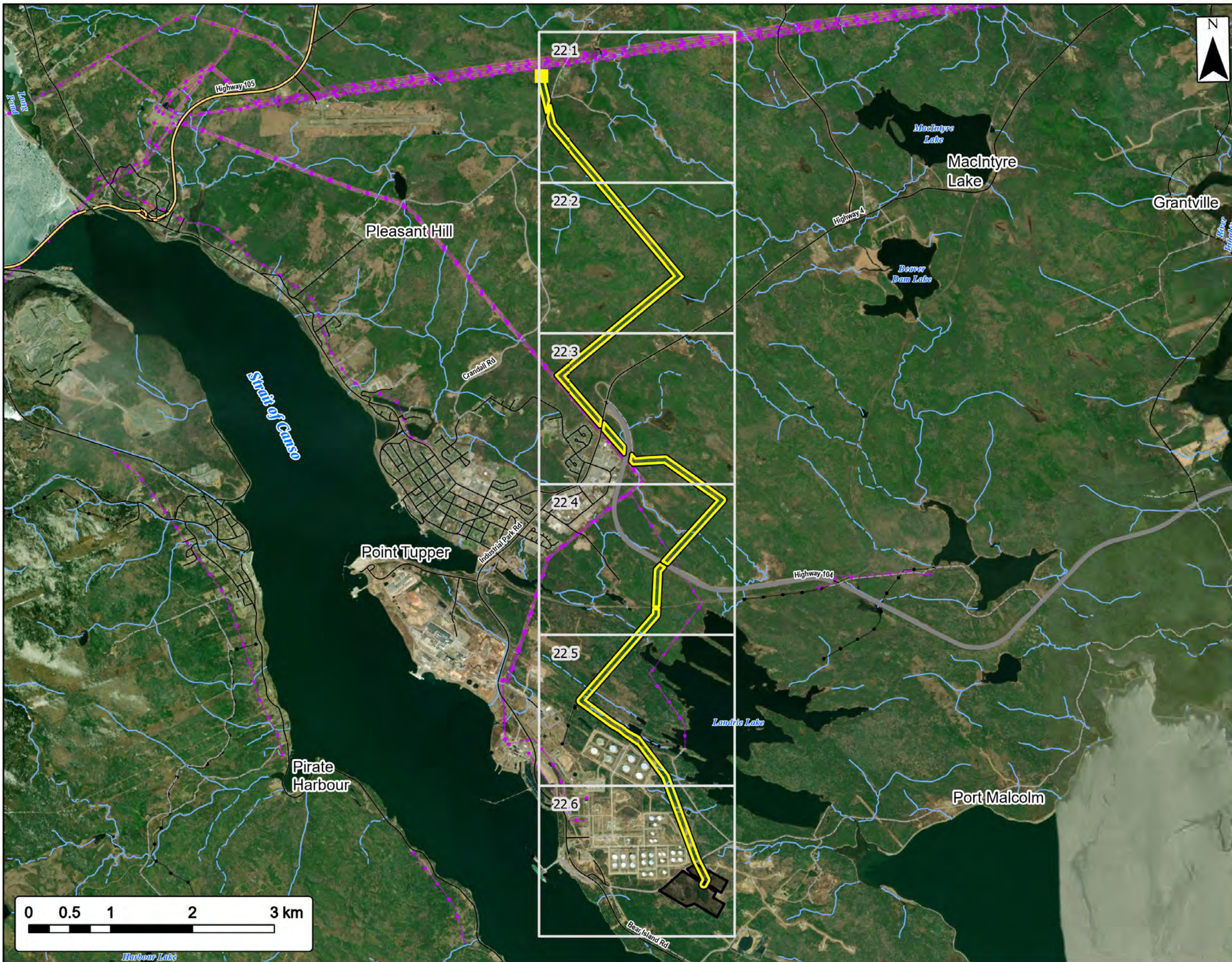
Transmission Interconnection Line	
Industrial Facility	



Coordinate System: NAD83 UTM Zone 20E
 Sources: ESRI Basemaps, GeoNOVA, NSD, NSNRR, HERE, Garmin, USGS, IBCan

Date: Nov 2022	Project #: 22-8516
Scale: 1:67,500	Drawing #: 21
Drawn By: P. Opra	
Checked By: M. Savelle	





Field Survey Overview

Overview of the Transmission Interconnection Line and Industrial Facility Field Survey Insets



Project Components

Northern Switching Station (NS Power)	
Transmission Interconnection Line	
Industrial Facility	

Transportation

Trans-Canada Highway	
Highway	
Road	
Unpaved Road	

Utilities (line)

Existing Pipeline	
Existing Transmission Lines (NS Power)	

Water Features

Mapped Stream	
Mapped Indefinite Stream	

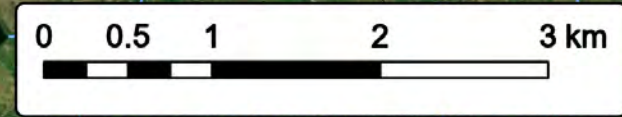


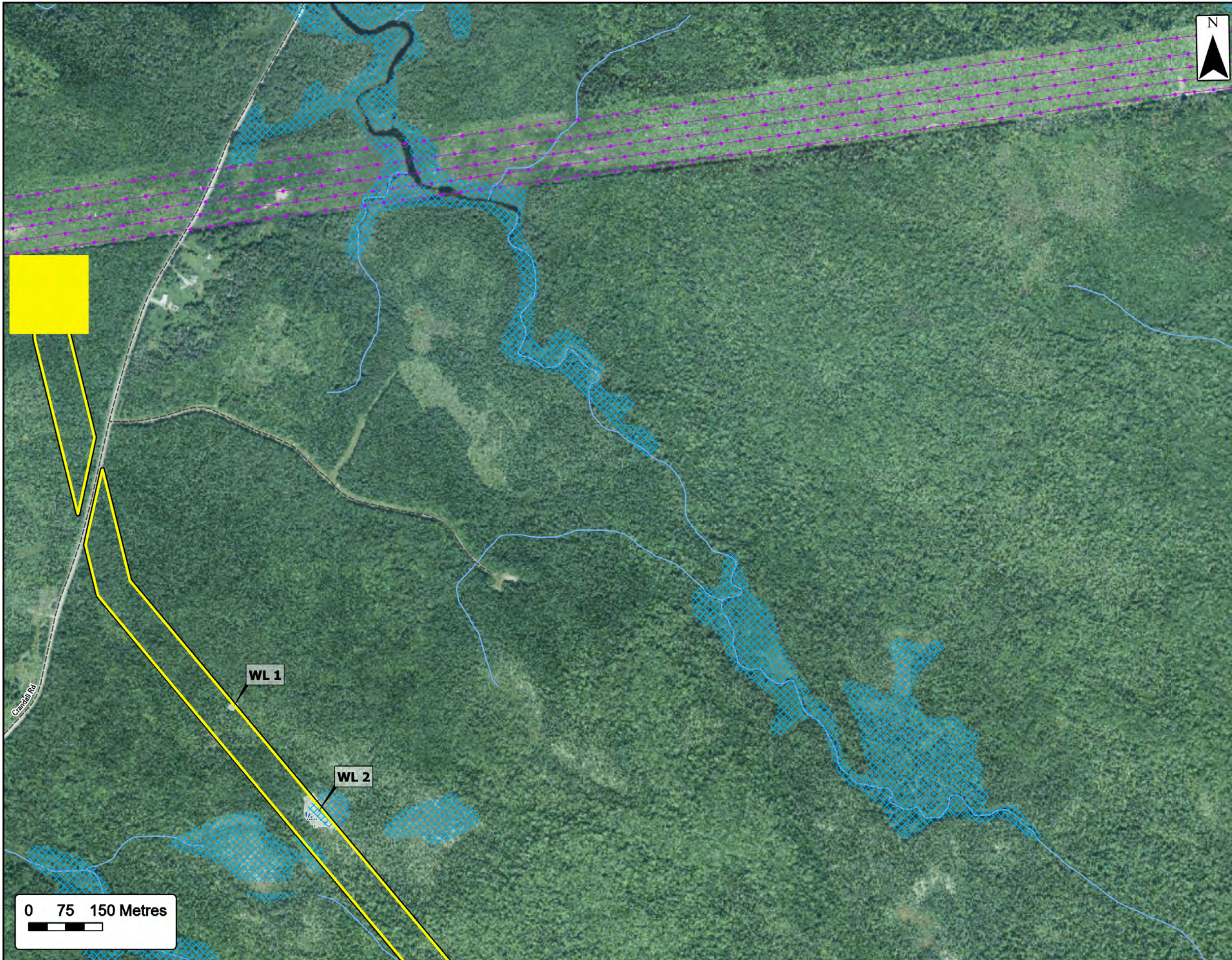
Coordinate System: NAD83 UTM Zone 20N Sources: ESRI Basemaps, GeoNOVA, NSTD, HERE, Garmin, USGS, NRCan

Date:	Nov 2022	Project #:	22-8516
Scale:	1:45,000	Drawing #:	22
Drawn By:	P. Opra		
Checked By:	N. Myers		



Engineering - Surveying - Environmental
Bedford - Antigonish - Moncton - St. John's





Field Survey Overview

Overview - Inset



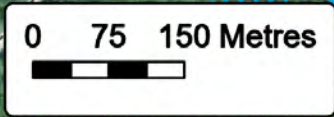
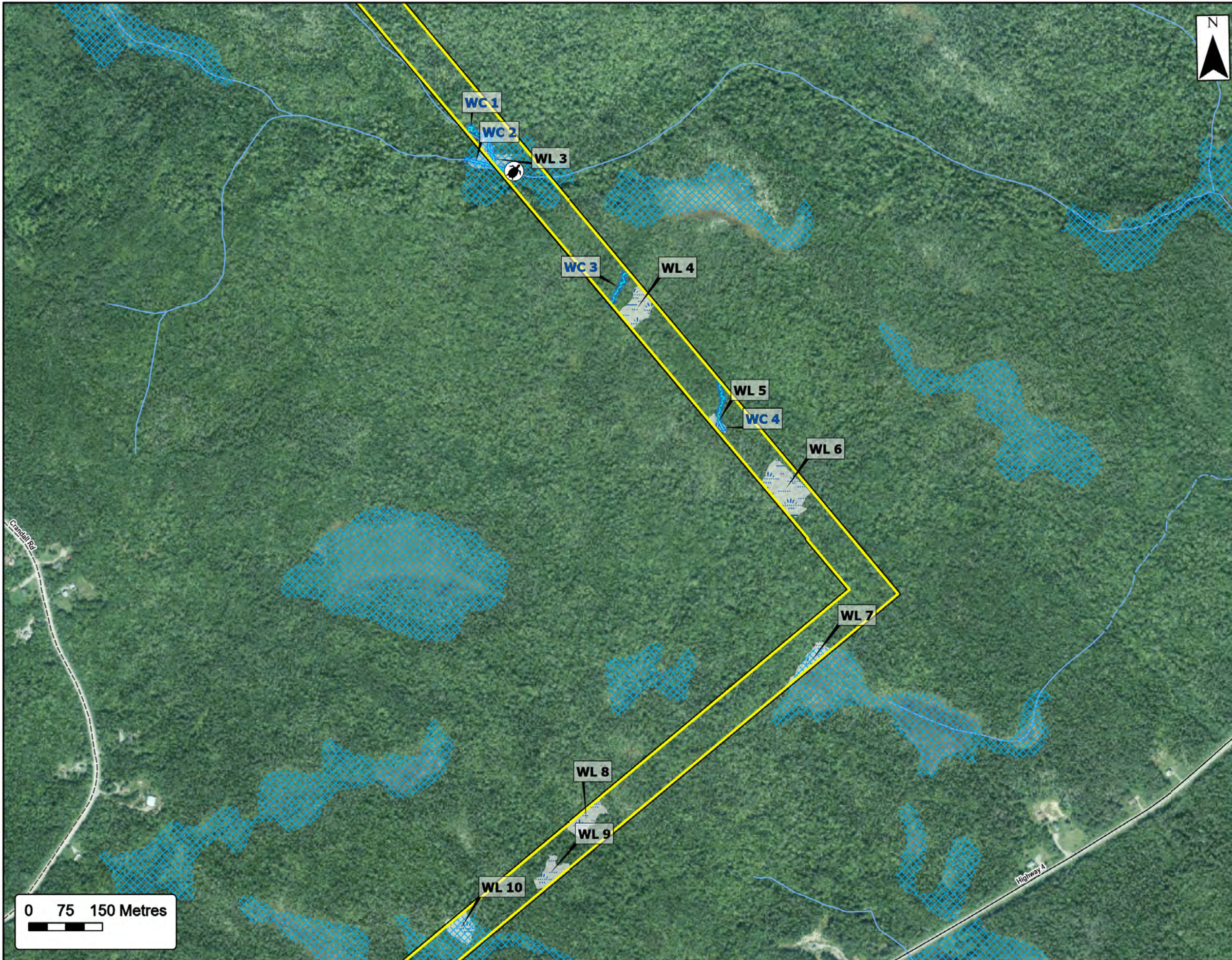
Field Surveyed Wetland (WL)	
Project Components	
Transmission Interconnection Line	
Northern Switching Station (NS Power)	
Transportation	
Unpaved Road	
Utilities (line)	
Existing Transmission Lines (NS Power)	
Water Features	
Mapped Stream	
Wetland of Special Significance	



Coordinate System: NAD83 UTM Zone 20N
 Sources: ESRI Basemaps, GeoNOVA, NSID, HERE, Garmin, USGS, NRCAN, ACCDC, Service NS and Internal Services

Date:	Nov 2022	Project #:	22-8516
Scale:	1:7,500	Drawing #:	22.1
Drawn By:	P. Opra		
Checked By:	N. Myers		





Field Survey Overview

Overview - Inset



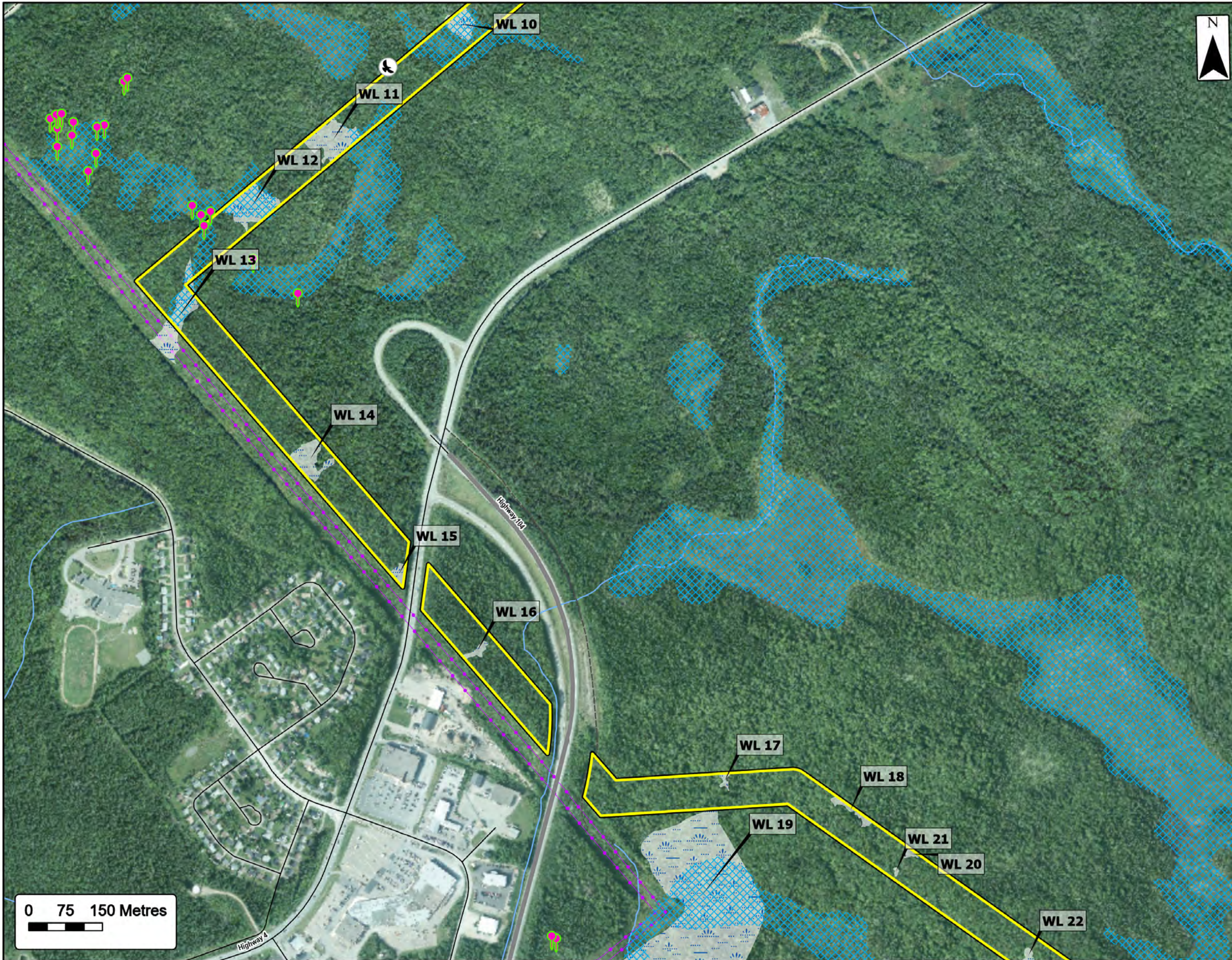
- Wood Turtle Habitat
- Field Surveyed Watercourse (WC)
- Field Surveyed Wetland (WL)
- Project Components**
- Transmission Interconnection Line
- Transportation**
- Road
- Unpaved Road
- Water Features**
- Mapped Stream
- Mapped Indefinite Stream
- Wetland of Special Significance



Coordinate System: NAD83 UTM Zone 20N
 Sources: ESRI Basemaps, GeoNOVA, NSTD, HERE, Garmin, USGS, NRCan, ACCDC, Service NS and Internal Services

Date:	Nov 2022	Project #:	22-8516
Scale:	1:7,500	Drawing #:	22.2
Drawn By:	P. Opra		
Checked By:	N. Myers		





Field Survey Overview

Overview - Inset



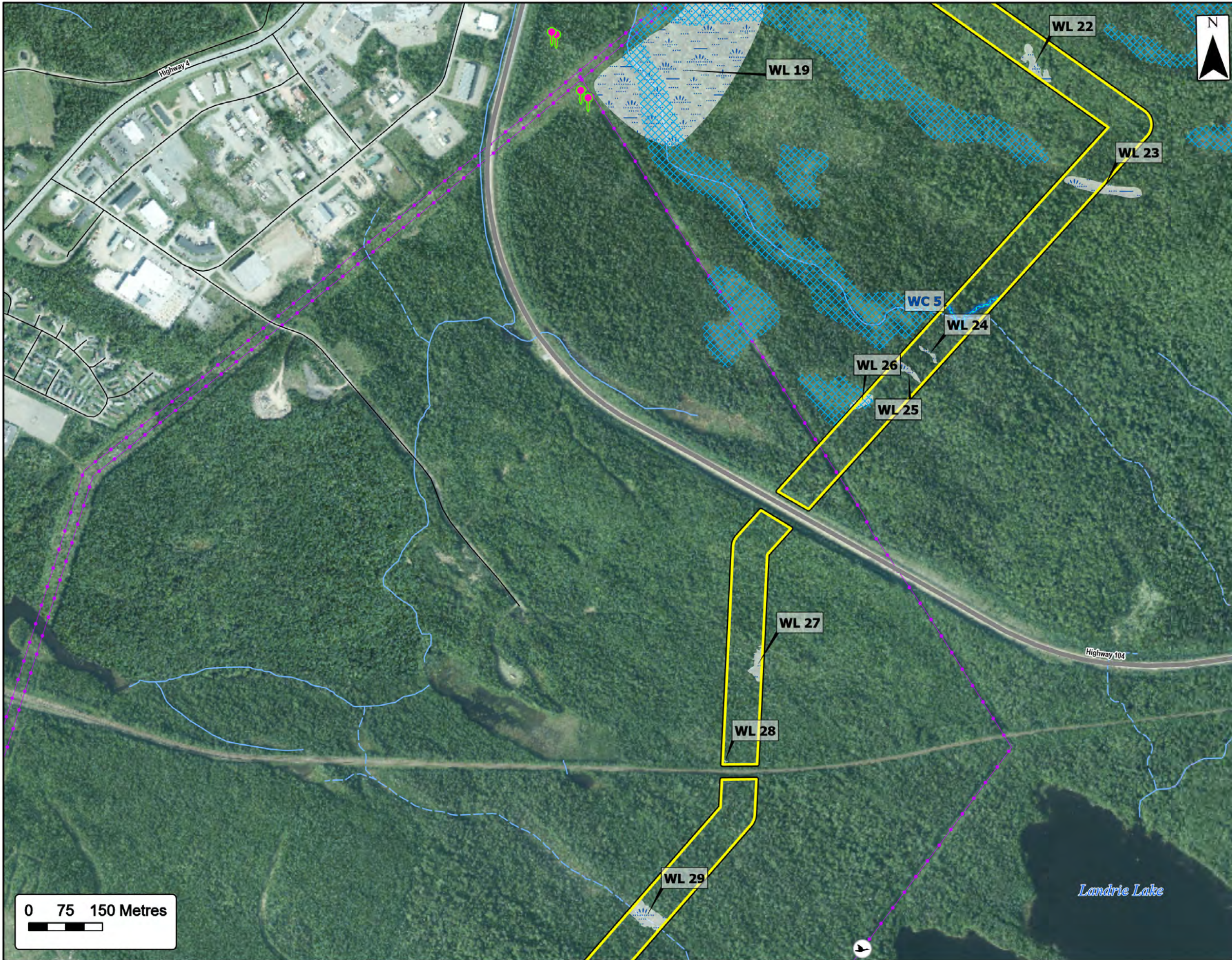
- Protected Flora - Southern Twayblade
- Osprey Calls
- Field Surveyed Wetland (WL)
- Project Components**
- Transmission Interconnection Line
- Transportation**
- Highway
- Road
- Unpaved Road
- Utilities (line)**
- Existing Transmission Lines (NS Power)
- Water Features**
- Mapped Stream
- Mapped Indefinite Stream
- Wetland of Special Significance



Coordinate System: NAD83 UTM Zone 20N
 Sources: ESRI Basemaps, GeoNOVA, NSID, HERE, Garmin, USGS, NRCAN, ACCDC, Service NS and Internal Services

Date: Nov 2022	Project #: 22-8516
Scale: 1:7,500	Drawing #: 22.3
Drawn By: P. Opra	
Checked By: N. Myers	





Field Survey Overview

Overview - Inset



- Protected Flora - Southern Twayblade
- Loon Activity
- Field Surveyed Watercourse (WC)
- Field Surveyed Wetland (WL)
- Project Components**
- Transmission Interconnection Line
- Transportation**
- Highway
- Road
- Utilities (line)**
- Existing Transmission Lines (NS Power)
- Water Features**
- Mapped Stream
- Mapped Indefinite Stream
- Wetland of Special Significance



Coordinate System: NAD83 UTM Zone 20N
 Sources: ESRI Basemaps, GeoNOVA, NSID, HERE, Garmin, USGS, NRCan, ACCDC, Service NS and Internal Services

Date:	Nov 2022	Project #:	22-8516
Scale:	1:7,500	Drawing #:	22.4
Drawn By:	P. Opra		
Checked By:	N. Myers		





Field Survey Overview

Overview - Inset



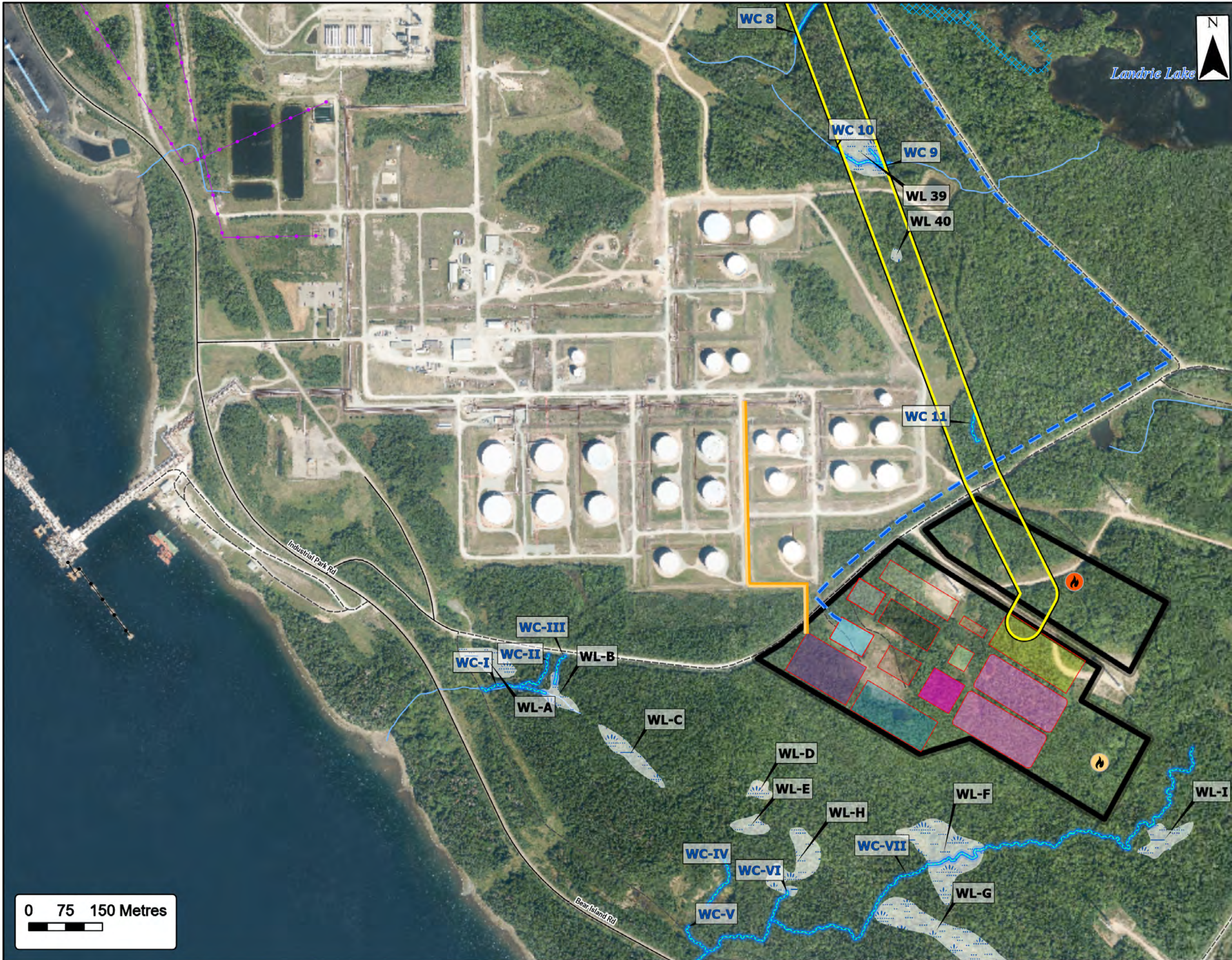
Active Osprey Nest	
Loon Activity	
Field Surveyed Watercourse (WC)	
Field Surveyed Wetland (WL)	
Project Components	
Transmission Interconnection Line	
LLWU Pump Station	
Raw Freshwater Pipeline	
Transportation	
Road	
Unpaved Road	
Utilities (line)	
Existing Pipeline	
Existing Transmission Lines (NS Power)	
Water Features	
Mapped Stream	
Mapped Indefinite Stream	
Wetland of Special Significance	



Coordinate System: NAD83 UTM Zone 20N
 Sources: ESRI Basemaps, GeoNOVA, NSID, HERE, Garmin, USGS, NRCAN, ACCDC, Service NS and Internal Services

Date: Nov 2022	Project #: 22-8516
Scale: 1:7,500	Drawing #: 22.5
Drawn By: P. Opra	
Checked By: N. Myers	





Field Survey Overview

Overview - Inset

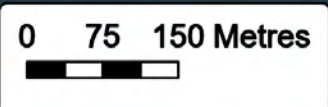


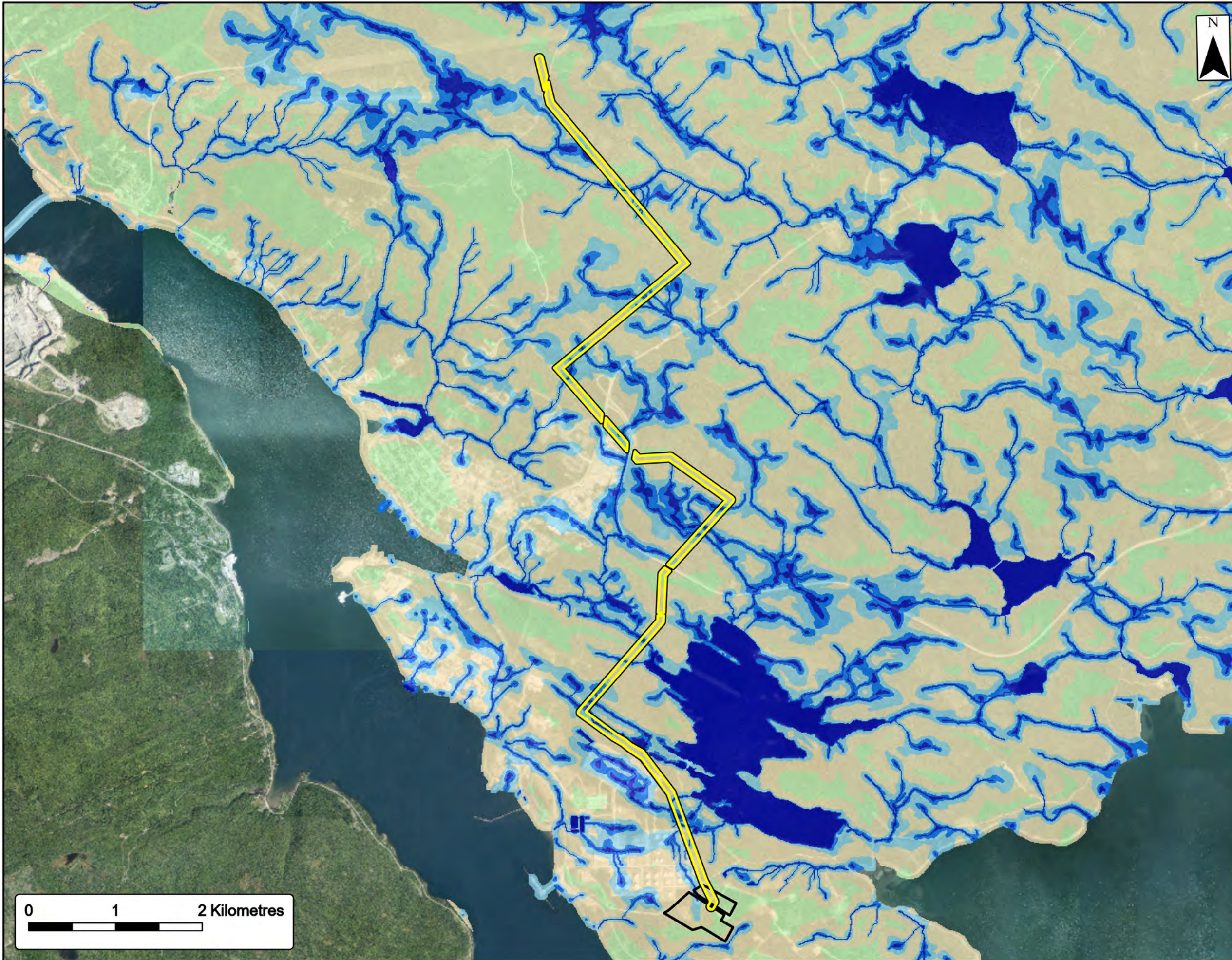
- Field Surveyed Watercourse (WC)
- Field Surveyed Wetland (WL)
- Project Components**
- Transmission Interconnection Line
- Storage Flare
- Process Flare
- Raw Freshwater Pipeline
- Approximate Ammonia Pipeline
- Industrial Facility
- Transportation**
- Road
- Unpaved Road
- Utilities (line)**
- Existing Pipeline
- Existing Transmission Lines (NS Power)
- Water Features**
- Mapped Stream
- Wetland of Special Significance



Coordinate System: NAD83 UTM Zone 20N
 Sources: ESRI Basemaps, GeoNOVA, NSID, HERE, Garmin, USGS, NRCan, ACCDC, Service NS and Internal Services

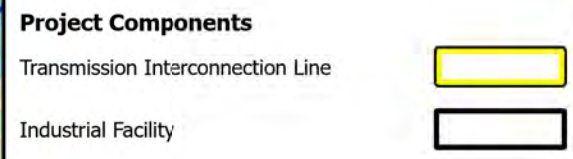
Date: Nov 2022	Project #: 22-8516
Scale: 1:7,500	Drawing #: 22.6
Drawn By: P. Opra	
Checked By: N. Myers	





Wet Area Mapping

Overview of the Depth to Water Table



Sources: ESRI Basemaps, GeoNova, NSID, HERE, Garmin, USGS, NRCCan, Service FIS and Internal Services

Date:	Nov 2022	Project #:	22-8516
Scale:	1:42,500	Drawing #:	23
Drawn By:	P. Opra		
Checked By:	M. Savelle		



Engineering - Surveying - Environmental
Bedford - Antigonish - Moncton - St. John's



Freshwater SOCI
 Overview of Salmon and
 Eastern Pearlshell Records

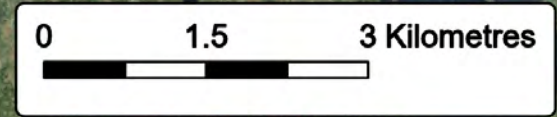


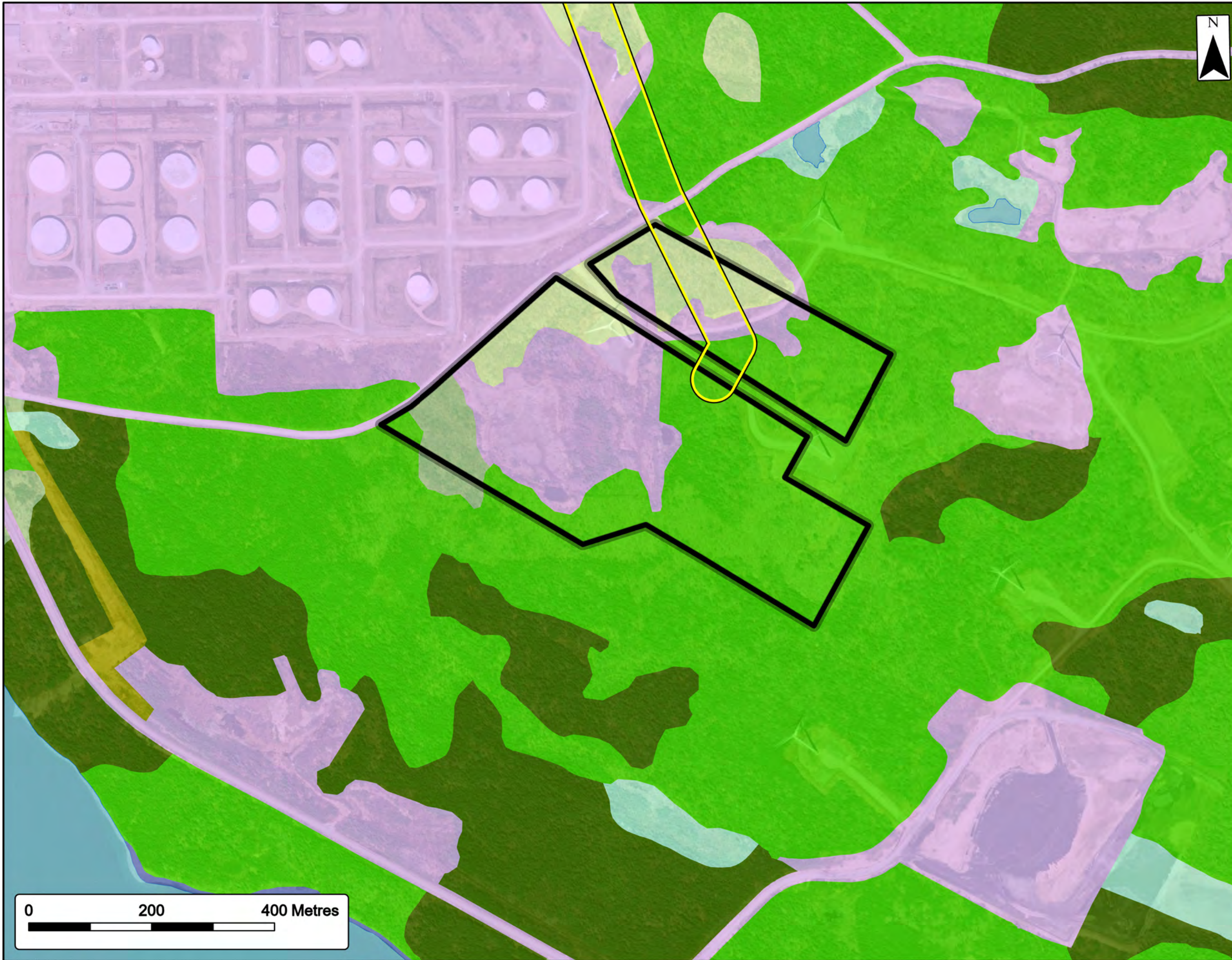
- Eastern Pearlshell
- Salmon Bearing Watercourses
- Secondary Watershed
- Project Components**
- Transmission Interconnection Line
- Industrial Facility



Sources: ESRI Basemaps, GeoNOVA, HST, HERE, Garmin, USGS, IRCan, ACDC, Service NS and Internal Services.

Date:	Nov 2022	Project #:	22-8516
Scale:	1:70,000	Drawing #:	24
Drawn By:	P. Opra		
Checked By:	N. Myers		





Industrial Facility Land Cover
 Overview of Industrial Facility and Land Cover



Land Cover

Hardwood	
Mixedwood	
Softwood	
Harvests	
Brush	
Bogs or Wetlands	
Water	
Coastal	
Urban, Landfill, Quarry, Transport Corridor	

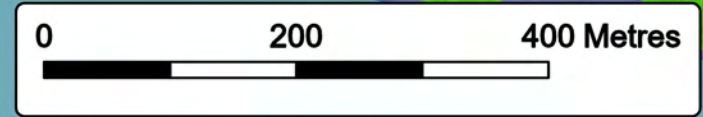
Project Components

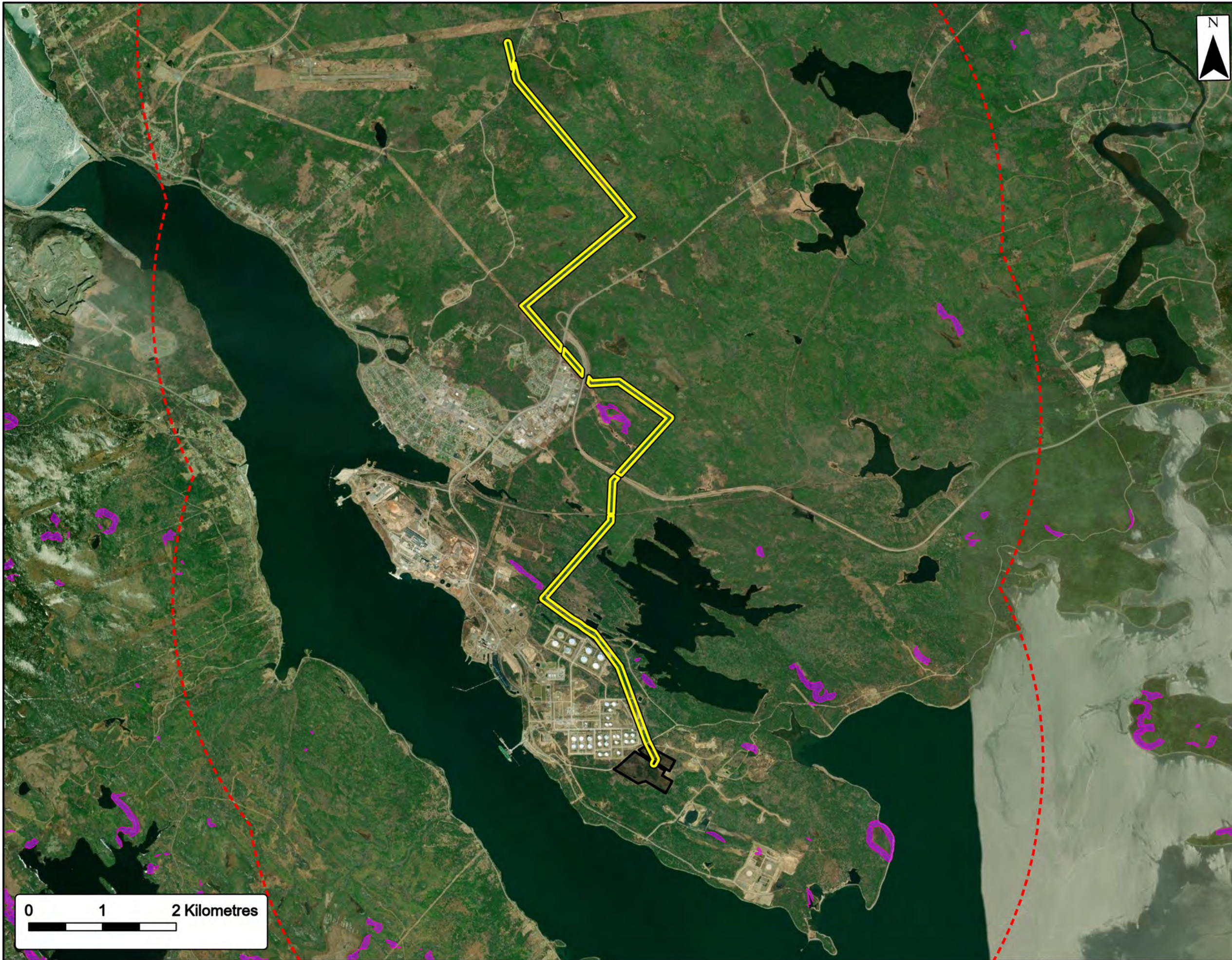
Transmission Interconnection Line	
Industrial Facility	



Sources: ESRI BaseMaps, GeoNOVA, NSTD, HERE, Garmin, USGS, IIRCan, Service FIS and Internet Services.

Date: Nov 2022	Project #: 22-8516
Scale: 1:6,000	Drawing #: 25
Drawn By: P. Opra	
Checked By: M. Savelle	





Boreal Felt Lichen Habitat
 Overview of Potential Habitat Identified in
 the 5 km Buffer (Study Area)



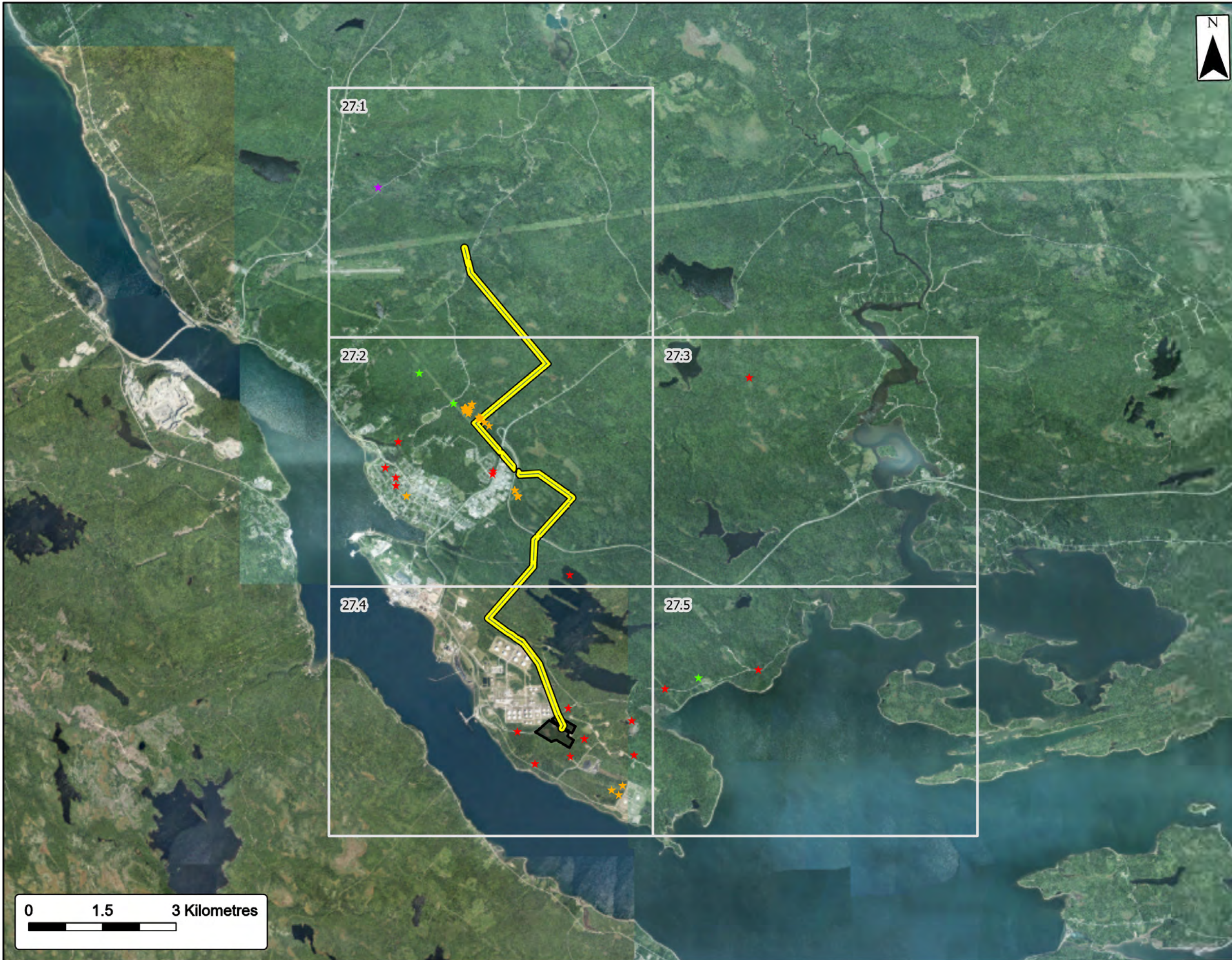
- Potential Boreal Felt Lichen Habitat
- 5 km Buffer (Study Area)
- Project Components**
- Transmission Interconnection Line
- Industrial Facility



Coordinate System: NAD83 UTM Zone 20N Sources: ESRI Basemaps, GeoNOVA, NSTD, HERE, Garmin, USGS, IARC.ca

Date: Nov 2022	Project #: 22-8516
Scale: 1:50,000	26
Drawn By: P. Opra	
Checked By: M. Savelle	





Terrestrial SOCI
 Overview of Terrestrial SOCI in the Study Area



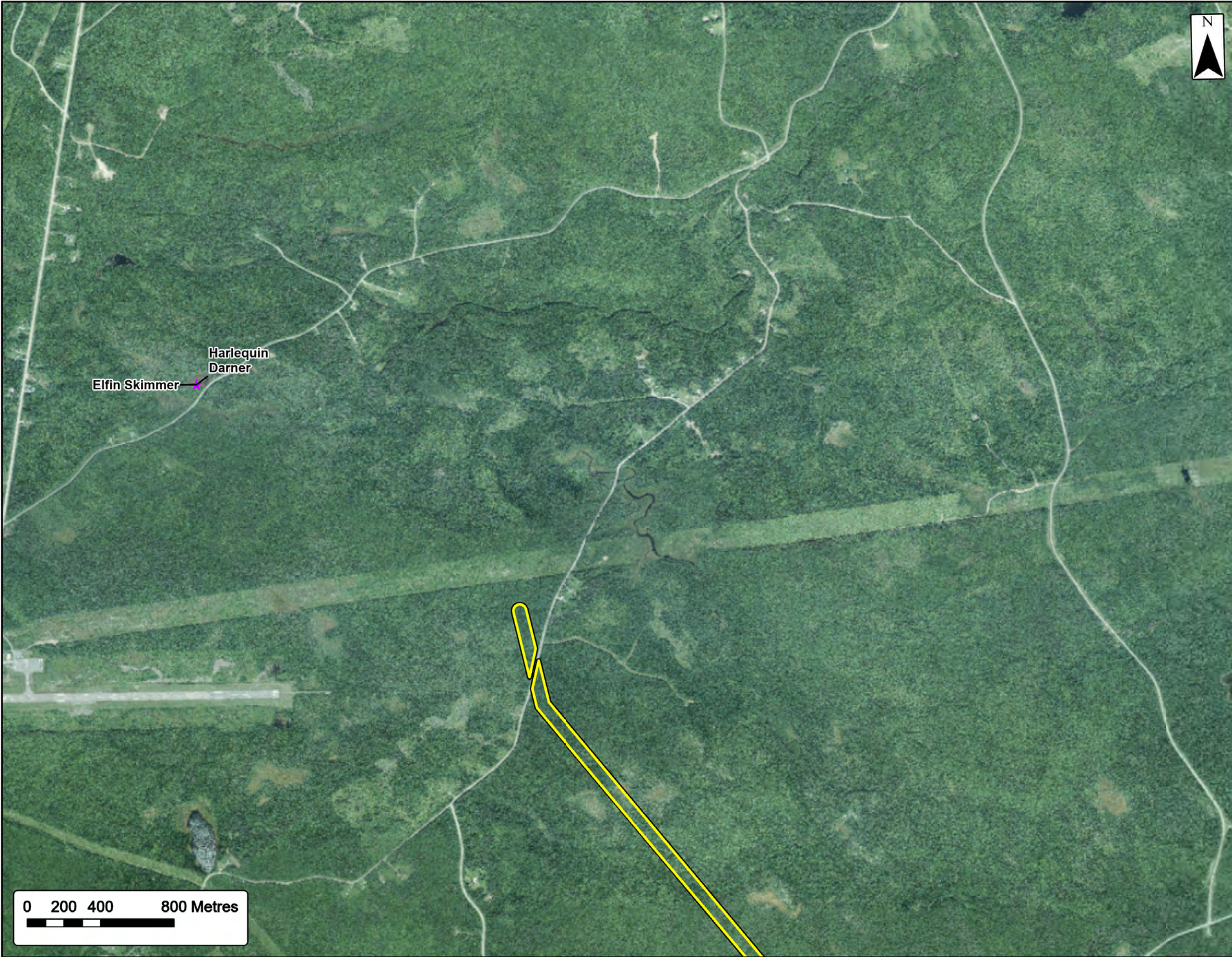
- SOCI - Bird ★
 - SOCI - Lichen ★
 - SOCI - Dragonfly ★
 - SOCI - Plant ★
- Project Components**
- Transmission Interconnection Line
 - Industrial Facility



Coordinate System: NAD83 UTM Zone 20N
 Sources: ESRI Basemaps, GeoNOVA, NSTD, HERE, Garmin, USGS, NRCAN, ACCDC, Service NS and Internal Services

Date:	Nov 2022	Project #:	22-8516
Scale:	1:75,000	Drawing #:	27
Drawn By:	P. Opra		
Checked By:	M. Savelle		



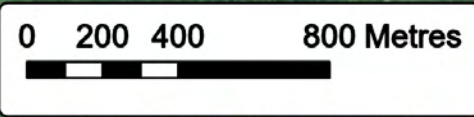


Terrestrial SOCI
 Overview of Terrestrial SOCI in the Study Area



- SOCI - Dragonfly ★
- Project Components**
- Transmission Interconnection Line ▭

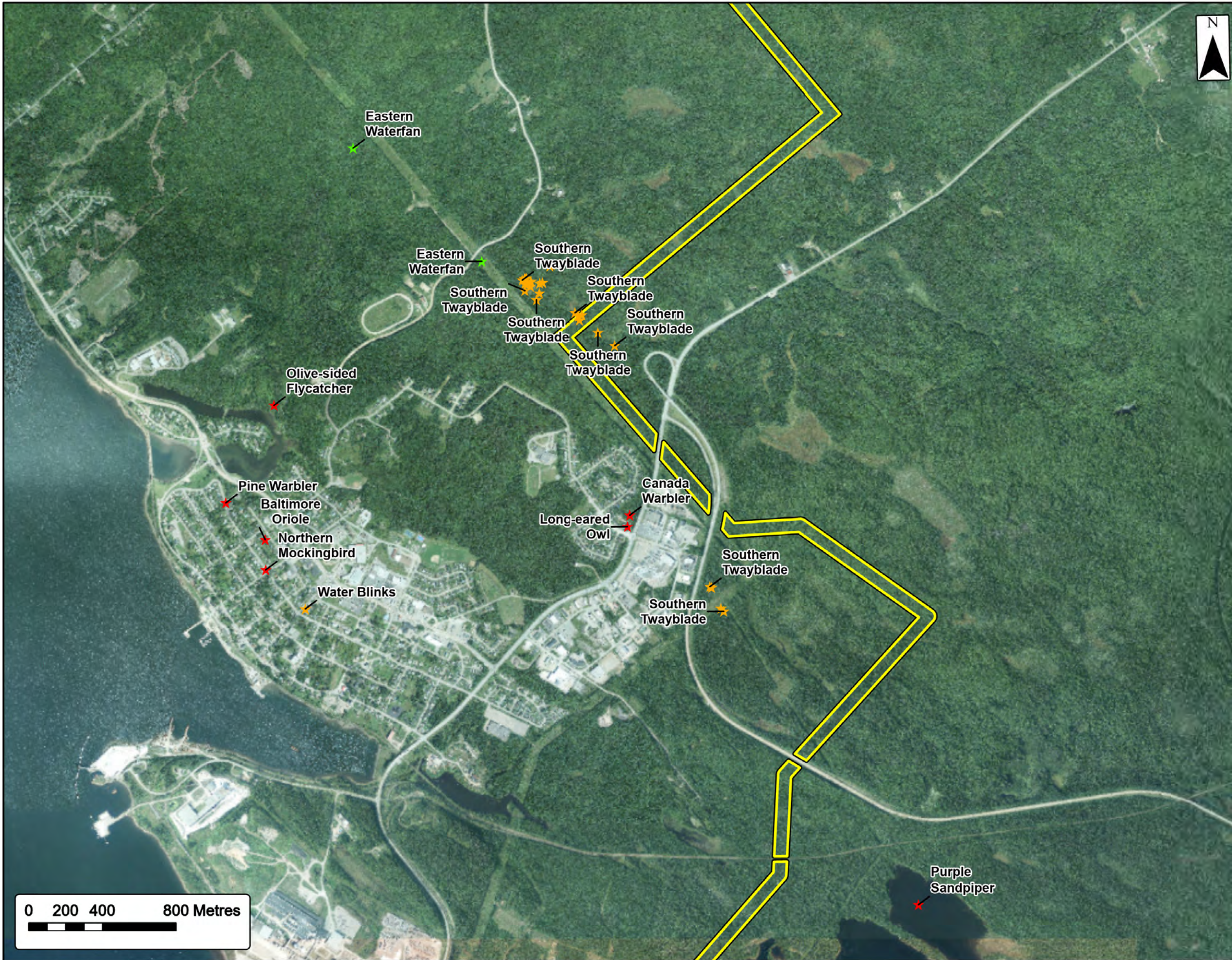
Elfin Skimmer
 Harlequin Darner



Sources: ESRI Basemaps, GeoNOVA, NSTD, HERE, Garmin, USGS, NRCAN, ACCDC, Service NS and Internal Services

Date:	Nov 2022	Project #:	22-8516
Scale:	1:20,000	Drawing #:	27.1
Drawn By:	P. Opra		
Checked By:	M. Savelle		

Strum
 CONSULTING
 Engineering - Surveying - Environmental
 Bedford - Antigonish - Moncton - St. John's



Terrestrial SOCI
Overview of Terrestrial SOCI in the Study Area



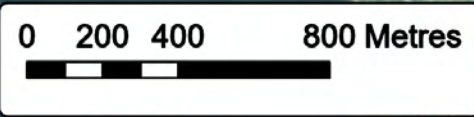
- SOCI - Bird ★
- SOCI - Lichen ★
- SOCI - Plant ★

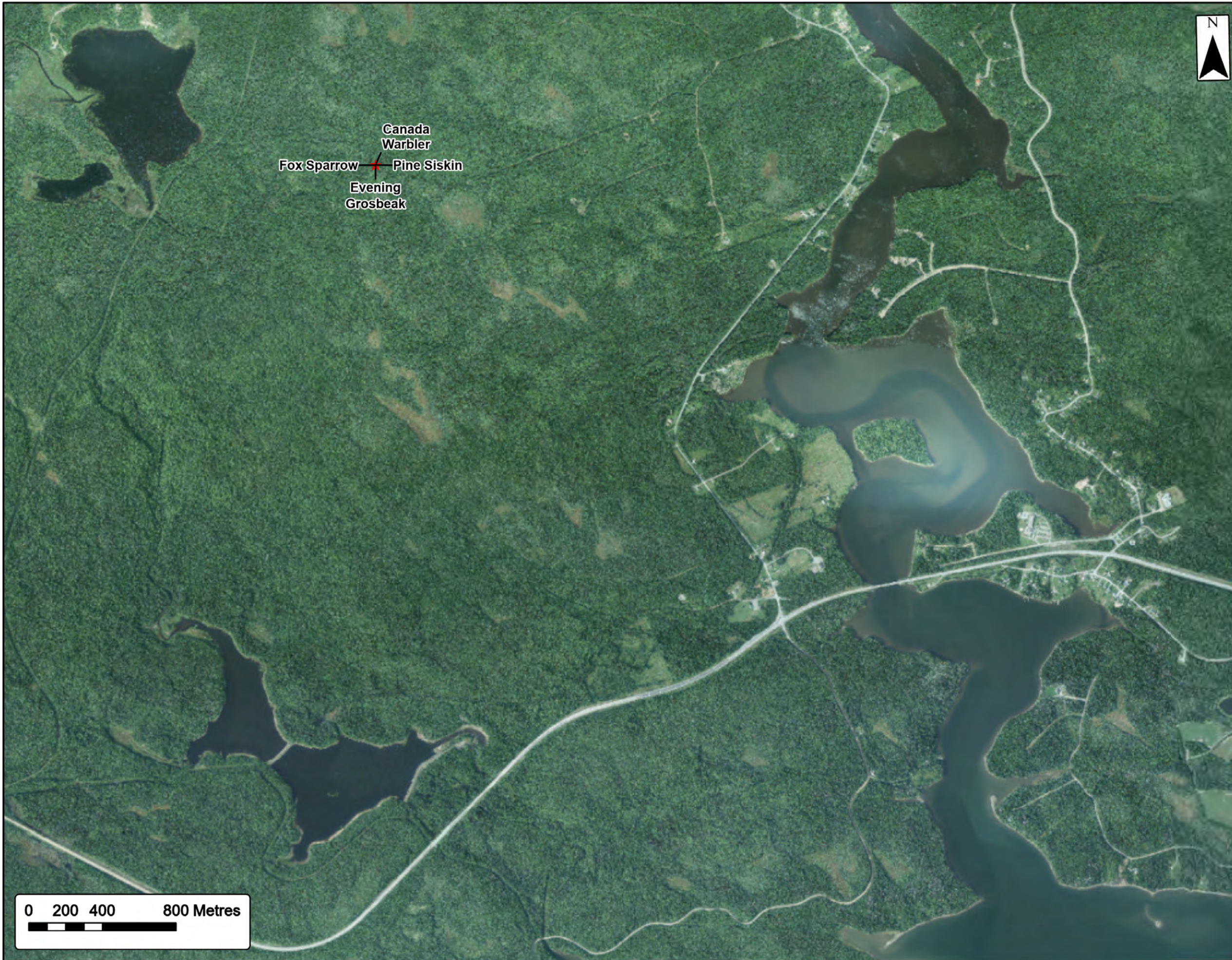
- Project Components**
- Transmission Interconnection Line



Coordinate System: NAD83 UTM Zone 20N
Sources: ESRI Basemaps, GeoNOVA, NSTD, HERE, Garmin, USGS, NRCan, ACCDC, Service NS and Internal Services

Date:	Nov 2022	Project #:	22-8516
Scale:	1:20,000	Drawing #:	27.2
Drawn By:	P. Opra		
Checked By:	M. Savelle		





Terrestrial SOCI
 Overview of Terrestrial SOCI in the Study Area

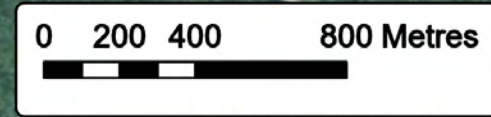


SOCI - Bird ★



Sources: ESRI Basemaps, GeoNOVA, NSTD, HERE, Garmin, USGS, NRCAN, ACCDC, Service NS and Internal Services

Date:	Nov 2022	Project #:	22-8516
Scale:	1:20,000	Drawing #:	27.3
Drawn By:	P. Opra		
Checked By:	M. Savelle		





Terrestrial SOCI
Overview of Terrestrial SOCI in the Study Area

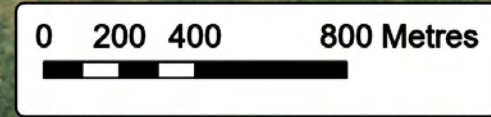


- SOCI - Bird ★
 - SOCI - Plant ★
- Project Components**
- Transmission Interconnection Line
 - Industrial Facility



Coordinate System: NAD83 UTM Zone 20N
Sources: ESRI Basemaps, GeoNOVA, NSTD, HERE, Garmin, USGS, NRCAN, ACCDC, Service NS and Internal Services

Date:	Nov 2022	Project #:	22-8516
Scale:	1:20,000	Drawing #:	27.4
Drawn By:	P. Opra		
Checked By:	M. Savelle		





Terrestrial SOCI
 Overview of Terrestrial SOCI in the Study Area



- SOCI - Bird ★
- SOCI - Lichen ★



Coordinate System: NAD83 UTM Zone 20N
 Sources: ESRI Basemaps, GeoNOVA, NSTD, HERE, Garmin, USGS, NRCAN, ACCDC, Service NS and Internal Services.

Date:	Nov 2022	Project #:	22-8516
Scale:	1:20,000	Drawing #:	27.5
Drawn By:	P. Opra		
Checked By:	M. Savelle		

