

Goose Harbour Lake Wind Farm Project

Overview of Communities

Study Area	
Assessment Area	
Transportation	
Trans-Canada Highway	
Highway	
Road	
Unpaved Road	
Utilities (line)	
Existing Pipeline	
Existing Transmission Lines	
Water Features	
Mapped Stream	
Mapped Indefinite Stream	
Mapped Lakes and Rivers	
Mapped Wet Area	

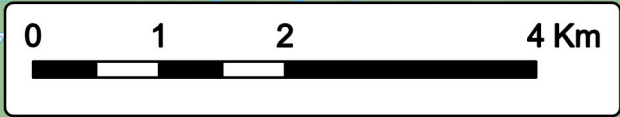
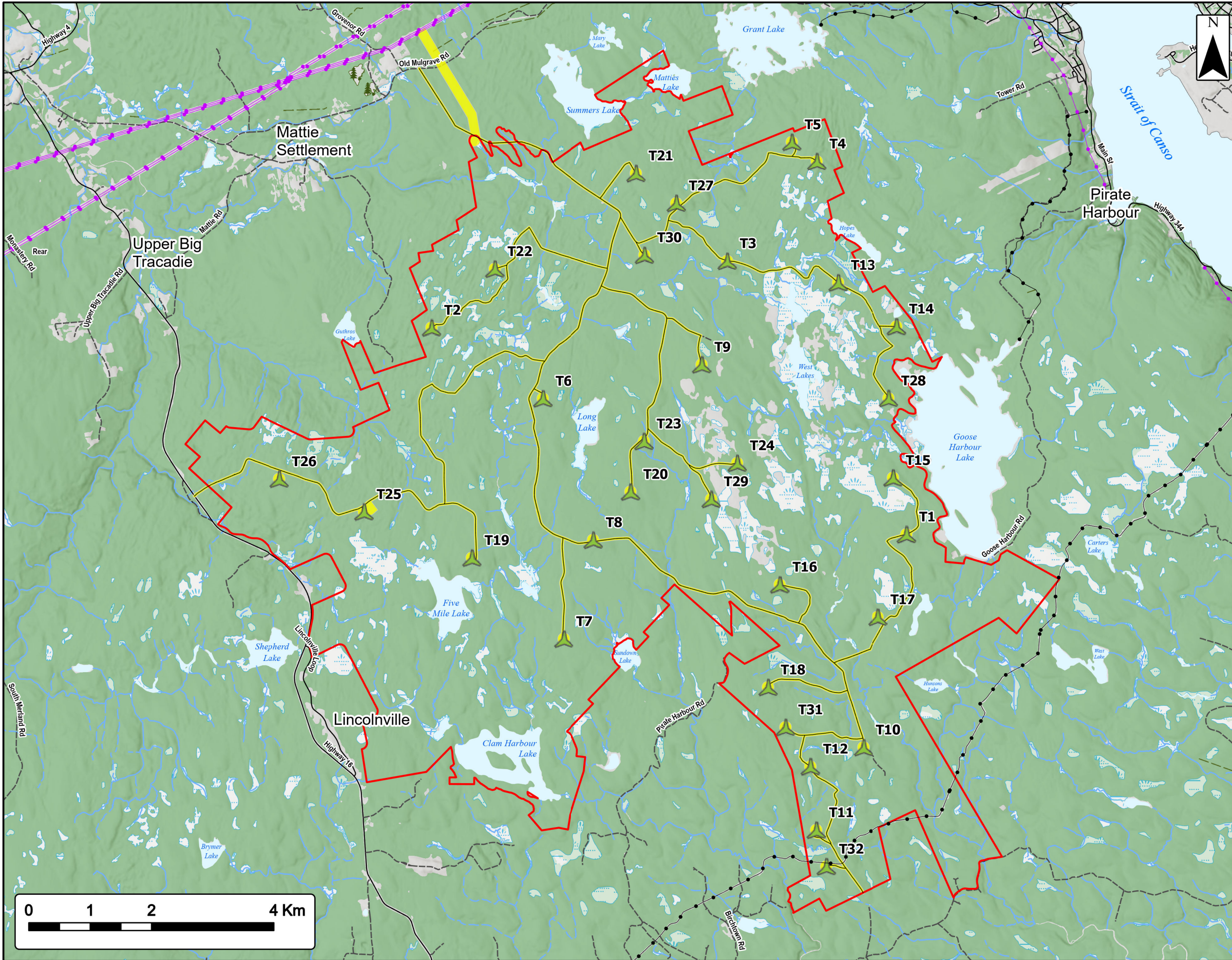


Date: Jan 2023		Project #: 21-7890	
Scale: 1:100,000		Drawing #: 2.1	
Drawn By: P. Opra			
Checked By: M. Savelle			



Coordinate System: NAD83 UTM Zone 20N
Sources: Esri Basemaps, GeoNOVA, SNSIS, NRCAN, NSNRR, ACCDC, IBA Canada





Goose Harbour Lake Wind Farm Project

Site Overview

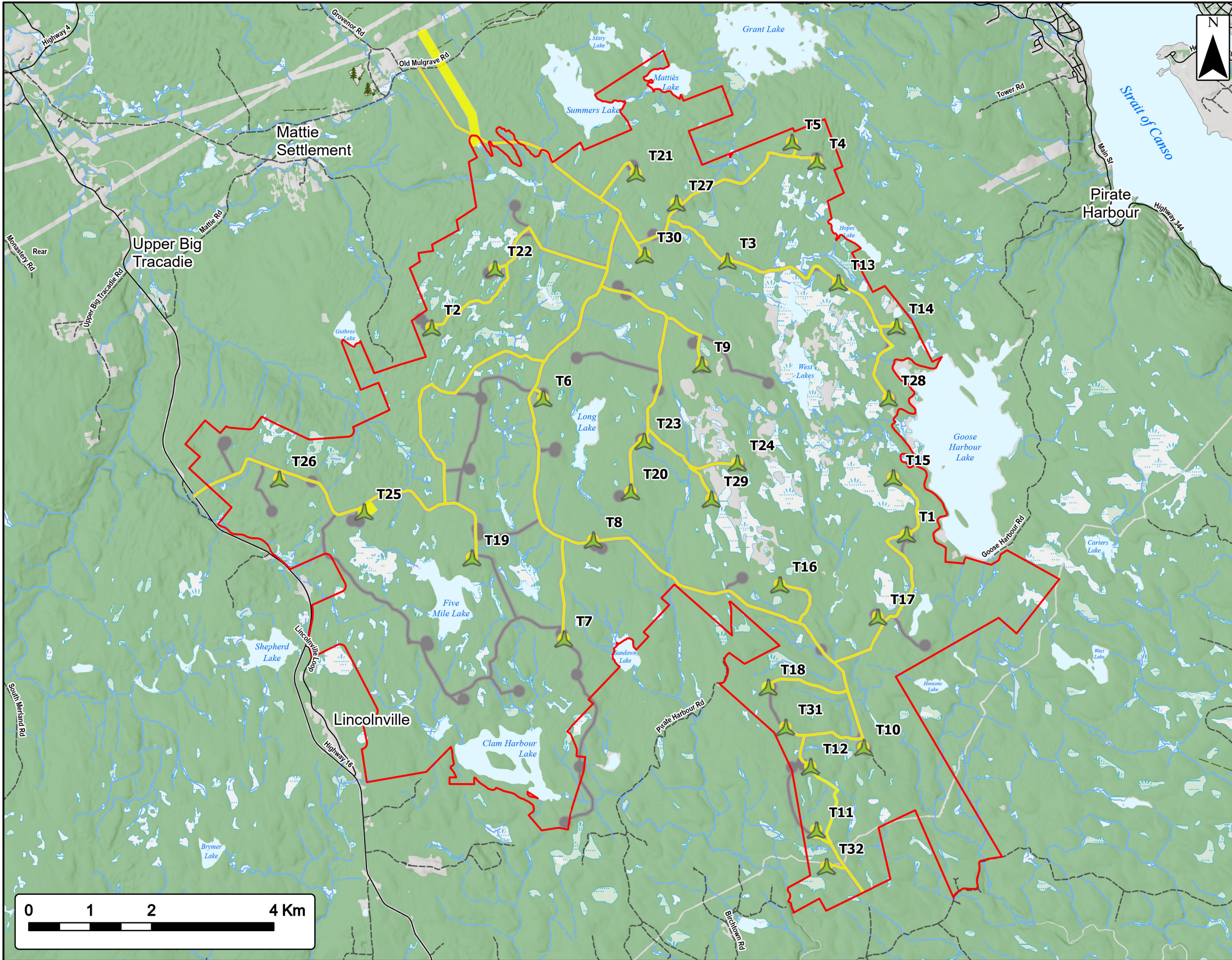
- Proposed Turbine Location
- Project Area
- Study Area
- Assessment Area
- Transportation**
- Road
- Unpaved Road
- Utilities (line)**
- Existing Pipeline
- Existing Transmission Lines
- Water Features**
- Mapped Stream
- Mapped Indefinite Stream
- Mapped Wet Area



Coordinate System: NAD83 UTM Zone 20N
 Sources: Esri Basemaps, GeoNOVA, SNSIS, NRCan, NSNRR, ACCDG, IBA Canada

Date:	Jan 2023	Project #:	21-7890
Scale:	1:60,000	Drawing #:	2.2
Drawn By:	M. Savelle		
Checked By:	M. Smith		





Goose Harbour Lake Wind Farm Project

Previous Layouts

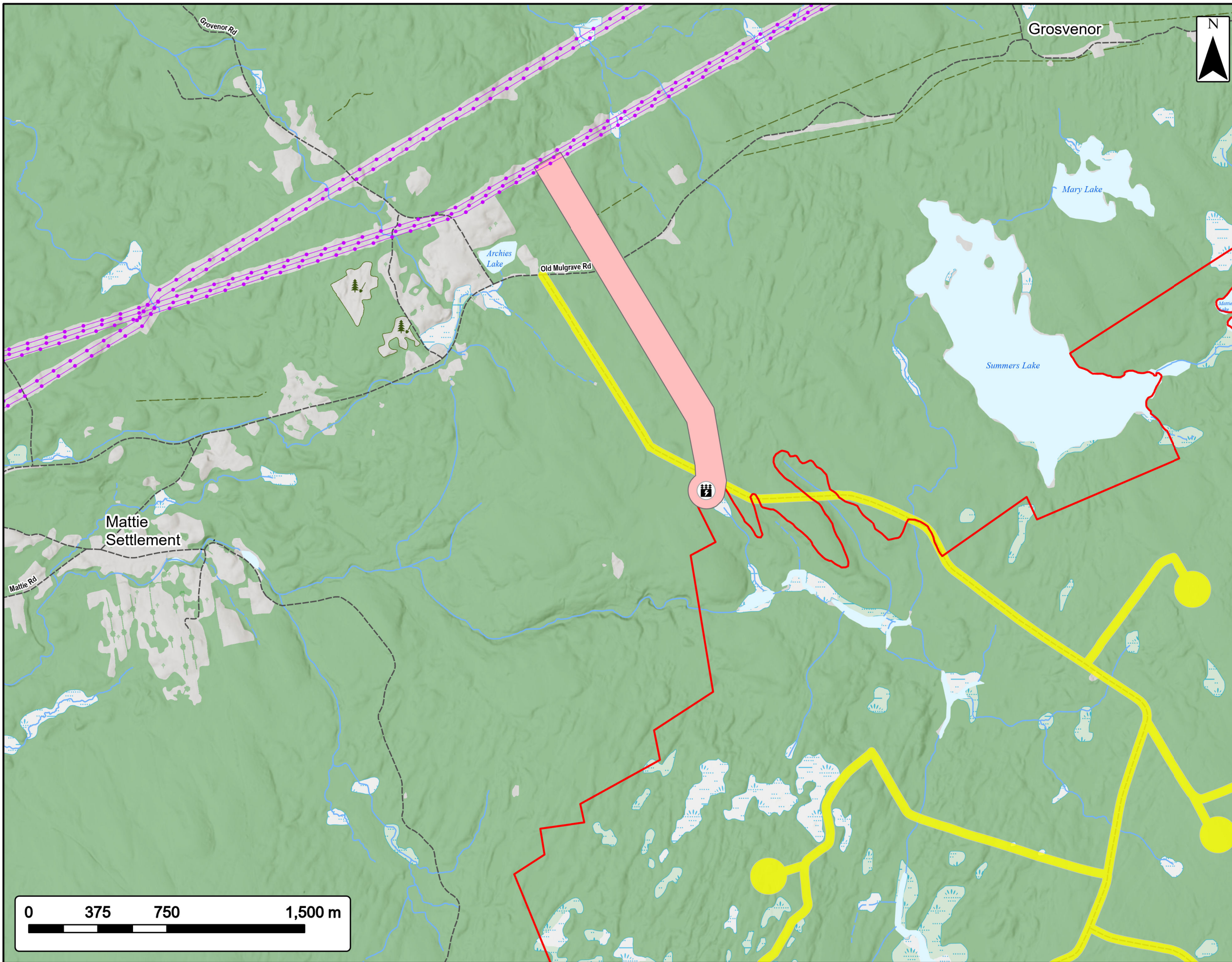
- Proposed Turbine Location
- Study Area
- Assessment Area
- Previously Considered Layouts
- Transportation**
- Road
- Unpaved Road
- Water Features**
- Mapped Stream
- Mapped Indefinite Stream
- Mapped Lakes and Rivers
- Mapped Wet Area



Coordinate System: NAD83 UTM Zone 20N
 Sources: Esri Basemaps, GeoNOVA, SNSIS, NRCan, NSNRR, ACCDG, IBA Canada

Date:	Jan 2023	Project #:	21-7890
Scale:	1:60,000	Drawing #:	3.1
Drawn By:	M. Savelle		
Checked By:	M. Smith		





Goose Harbour Lake Wind Farm Project

Interconnection Corridor

- Study Area
- Assessment Area
- Interconnection Corridor
- Proposed Substation
- Transportation**
- Road
- Unpaved Road
- Utilities (line)**
- Existing Transmission Lines
- Water Features**
- Mapped Stream
- Mapped Indefinite Stream
- Mapped Lakes and Rivers
- Mapped Wet Area



Coordinate System: NAD83 UTM Zone 20N
Sources: Esri Basemaps, GeoNOVA, SNSIS, NRCan, NSNRR, ACCDG, IBA Canada

Date: Jan 2023	Project #: 21-7890
Scale: 1:20,000	Drawing #: 3.2
Drawn By: M. Savelle	
Checked By: M. Smith	

