

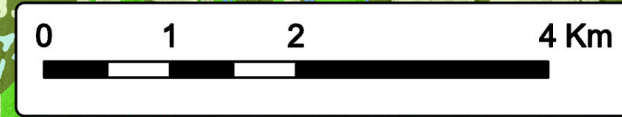
**Goose Harbour Lake
Wind Farm Project**
Land Cover

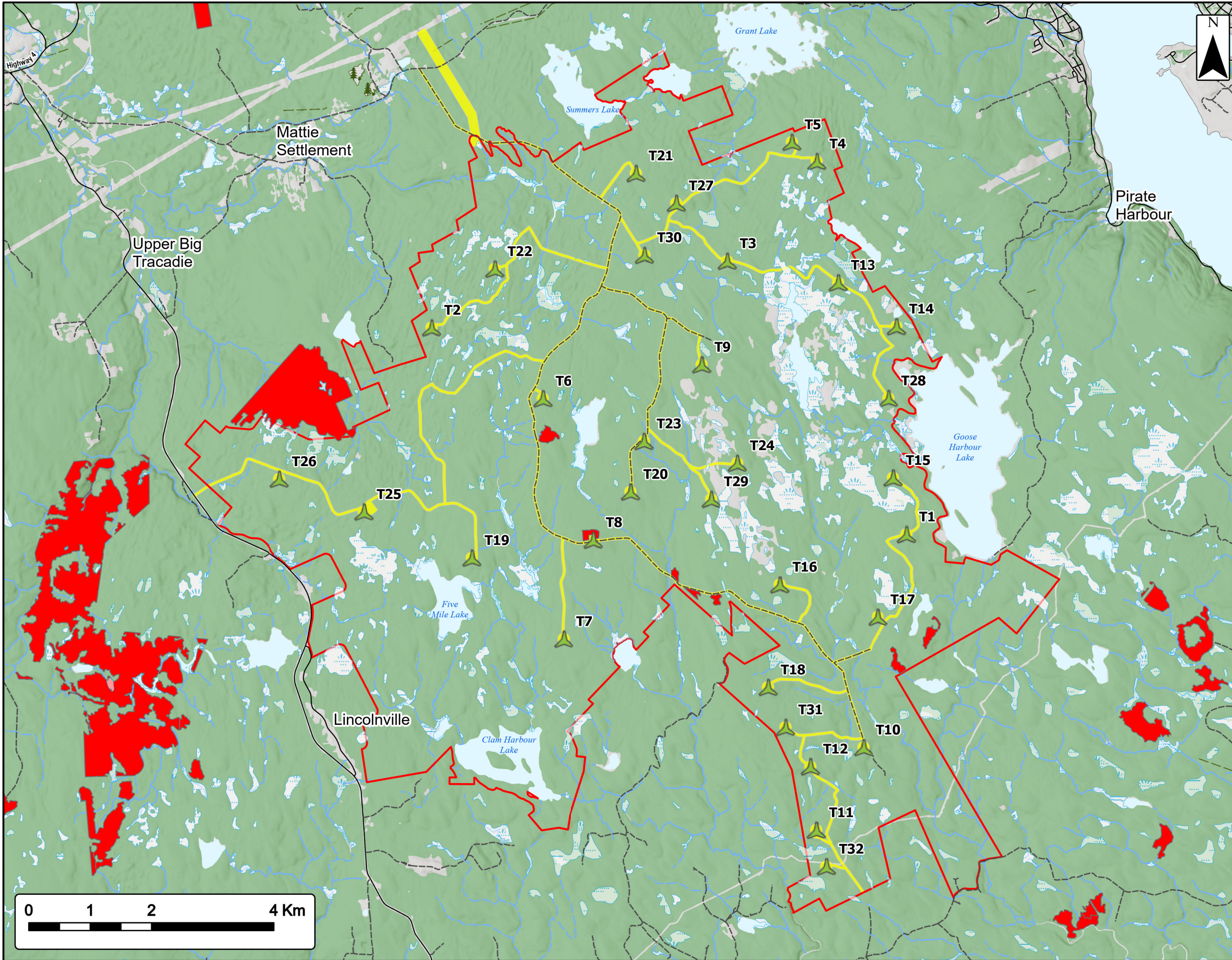
Study Area	
Assessment Area	
Land Cover	
Agriculture	
Blueberries or Barren	
Bogs or Wetlands	
Brush	
Coastal	
Hardwood	
Harvests	
Mixedwood	
Old Field	
Softwood	
Treated Stand, XMASS Trees or Research	
Urban, Landfill, Quarry, Transport Corridor	
Utility Corridor	
Water	



Coordinate System: NAD83 UTM Zone 20N Sources: Esri Basemaps, GeoNOVA, SNSIS, NRCAN, NSNRR, ACCDC, IBA Canada

Date:	Jan 2023	Project #:	21-7890
Scale:	1:60,000	Drawing #:	7.17
Drawn By:	P. Opra		
Checked By:	M. Savelle		





Goose Harbour Lake Wind Farm Project

Old Growth

Proposed Turbine Location

Study Area

Assessment Area

Old Growth Policy

Transportation

Road

Unpaved Road

Water Features

Mapped Stream

Mapped Indefinite Stream

Mapped Lakes and Rivers

Mapped Wet Area

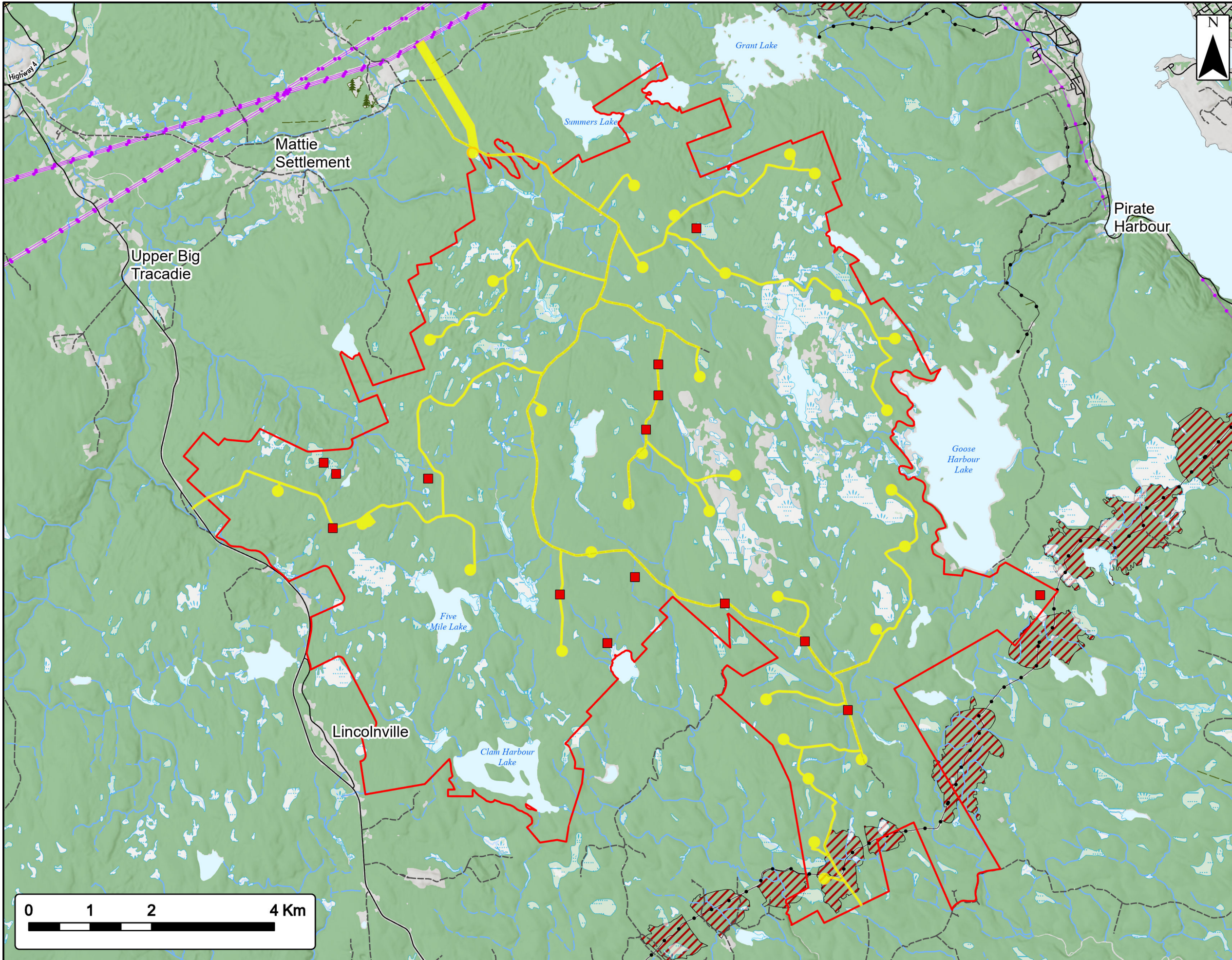


Coordinate System: NAD83 UTM Zone 20N
 Sources: Esri Basemaps, GeoNOVA, SNSIS, NRCan, NSNRR, ACCDG, IBA Canada

Date:	Jan 2023	Project #:	21-7890
Scale:	1:60,000	Drawing #:	7.18
Drawn By:	M. Savelle		
Checked By:	M. Smith		



Strum
 CONSULTING
 Engineering - Surveying - Environmental
 Bedford - Antigonish - Moncton - St. John's



Goose Harbour Lake Wind Farm Project

Vertebrate ACCDC Data and Significant Species/Habitat

- Study Area
- Assessment Area
- ACCDC Pt. Data**
- Vertebrate Fauna
- Significant Species & Habitats (NSNRR)**
- Species at Risk
- Utilities (line)**
- Existing Pipeline
- Existing Transmission Lines
- Transportation**
- Trans-Canada Highway
- Road
- Unpaved Road
- Water Features**
- Mapped Stream
- Mapped Indefinite Stream
- Mapped Lakes and Rivers
- Mapped Wet Area



Coordinate System: NAD83 UTM Zone 20N Sources: Esri Basemaps, GeoNOVA, SNSIS, NRCAN, NSNRR, ACCDC, IBA Canada

Date: Jan 2023	Project #: 21-7890
Scale: 1:60,000	Drawing #:
Drawn By: P. Opra	7.19A
Checked By: M. Savelle	

