

Goose Harbour Lake Wind Farm Project

Nonvascular ACCDC Data and Significant Species/Habitat

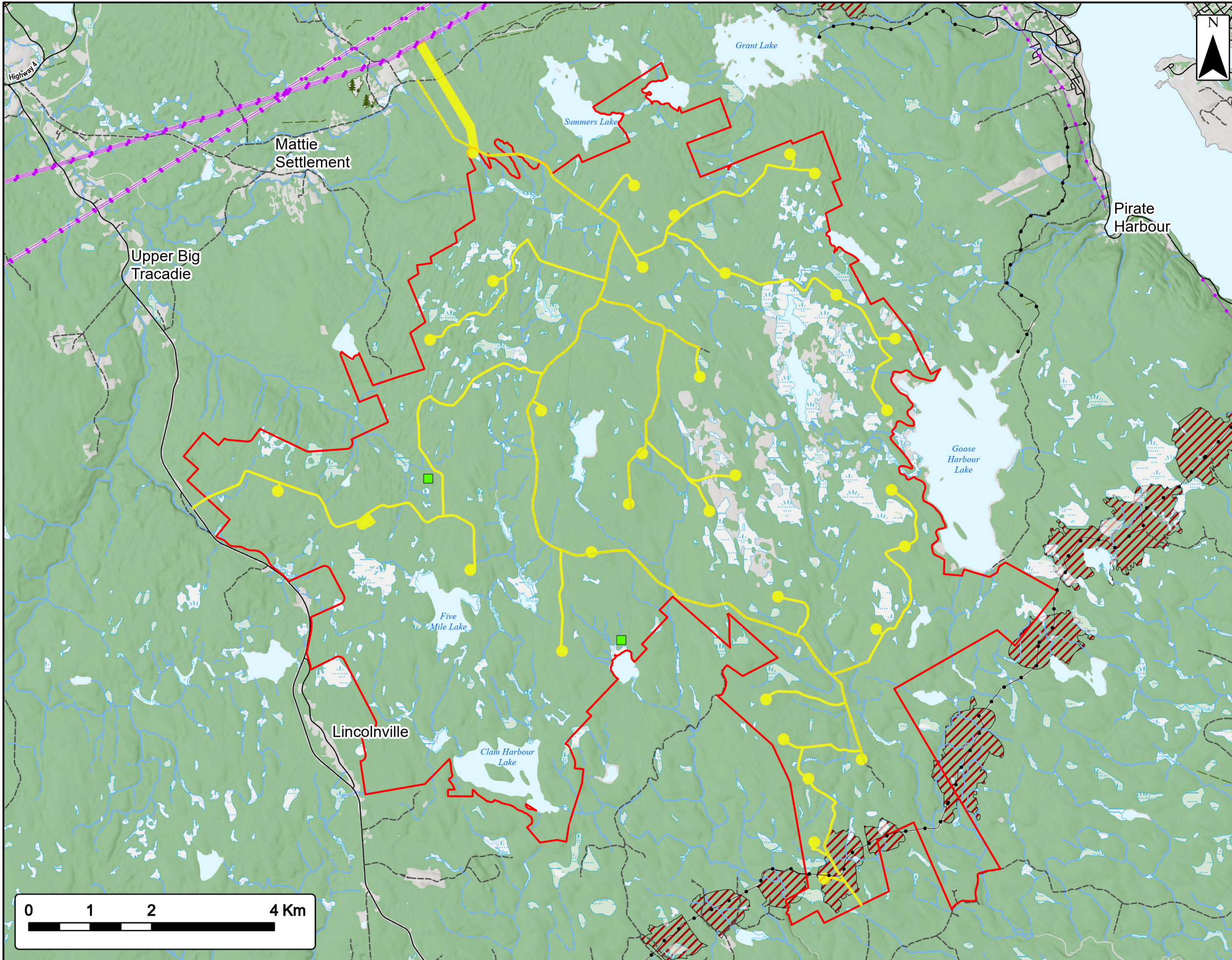
- Study Area
- Assessment Area
- ACCDC Pt. Data**
- Nonvascular Flora
- Significant Species & Habitats (NSNRR)**
- Species at Risk
- Utilities (line)**
- Existing Pipeline
- Existing Transmission Lines
- Transportation**
- Trans-Canada Highway
- Road
- Unpaved Road
- Water Features**
- Mapped Stream
- Mapped Indefinite Stream
- Mapped Lakes and Rivers
- Mapped Wet Area



Coordinate System: NAD83 UTM Zone 20N Sources: Esri Basemaps, GeoNOVA, SNSIS, NRCAN, NSNRR, ACCDC, IBA Canada

Date: Jan 2023	Project #: 21-7890
Scale: 1:60,000	Drawing #:
Drawn By: P. Opra	7.19B
Checked By: M. Savelle	





Goose Harbour Lake Wind Farm Project

Vascular ACCDC Data and Significant Species/Habitat

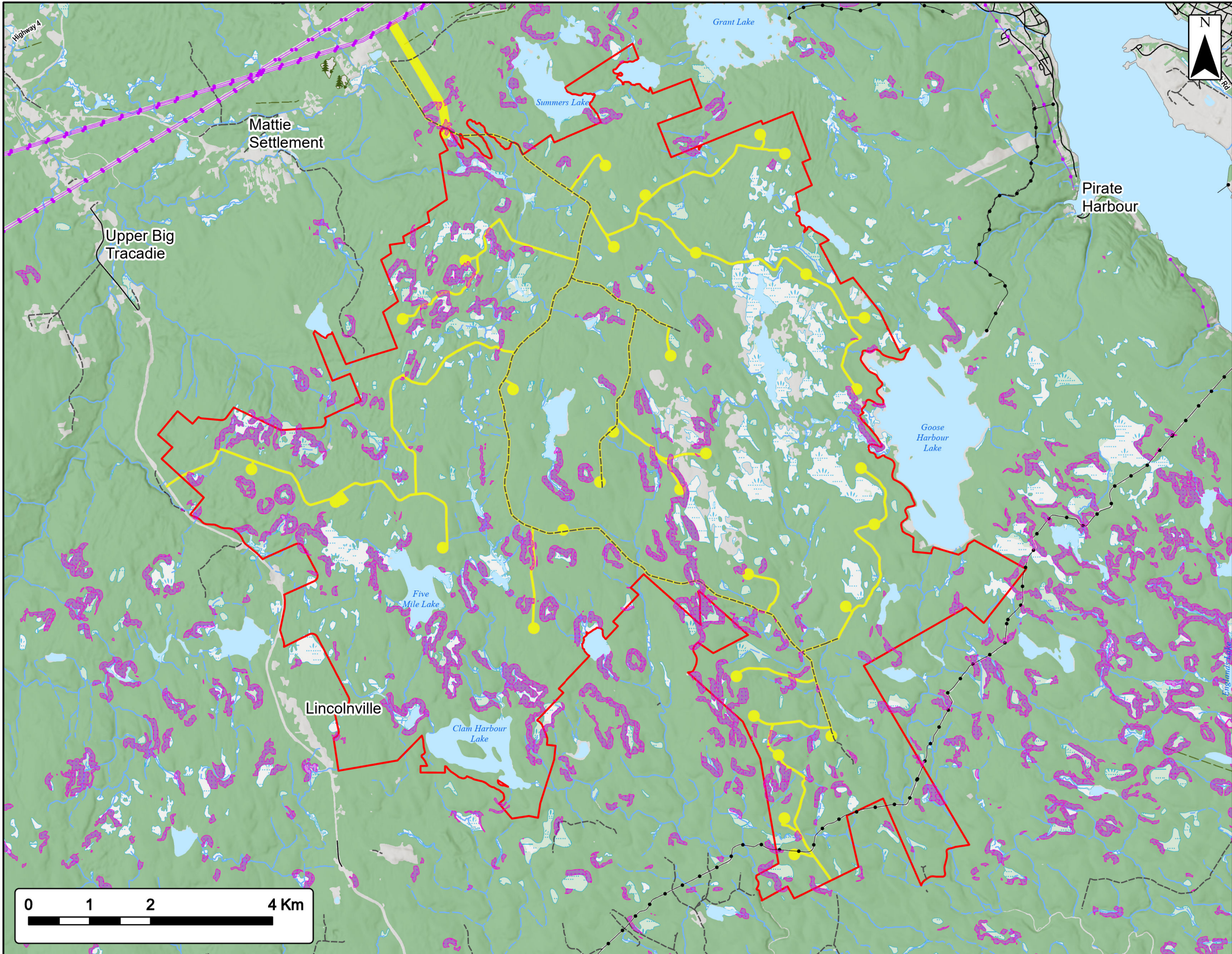
Study Area	
Assessment Area	
ACCDC Pt. Data	
Vascular Flora	
Significant Species & Habitats (NSNRR)	
Species at Risk	
Utilities (line)	
Existing Pipeline	
Existing Transmission Lines	
Transportation	
Trans-Canada Highway	
Road	
Unpaved Road	
Water Features	
Mapped Stream	
Mapped Indefinite Stream	
Mapped Lakes and Rivers	
Mapped Wet Area	



Coordinate System: NAD83 UTM Zone 20N Sources: Esri Basemaps, GeoNOVA, SNSIS, NRCan, NSNRR, ACCDC, IBA Canada

Date: Jan 2023	Project #: 21-7890
Scale: 1:60,000	Drawing #:
Drawn By: P. Opra	7.19C
Checked By: M. Savelle	

Strum
CONSULTING
Engineering - Surveying - Environmental
Bedford - Antigonish - Moncton - St. John's



Goose Harbour Lake Wind Farm Project

Overview of Potential Boreal Felt Lichen Habitat

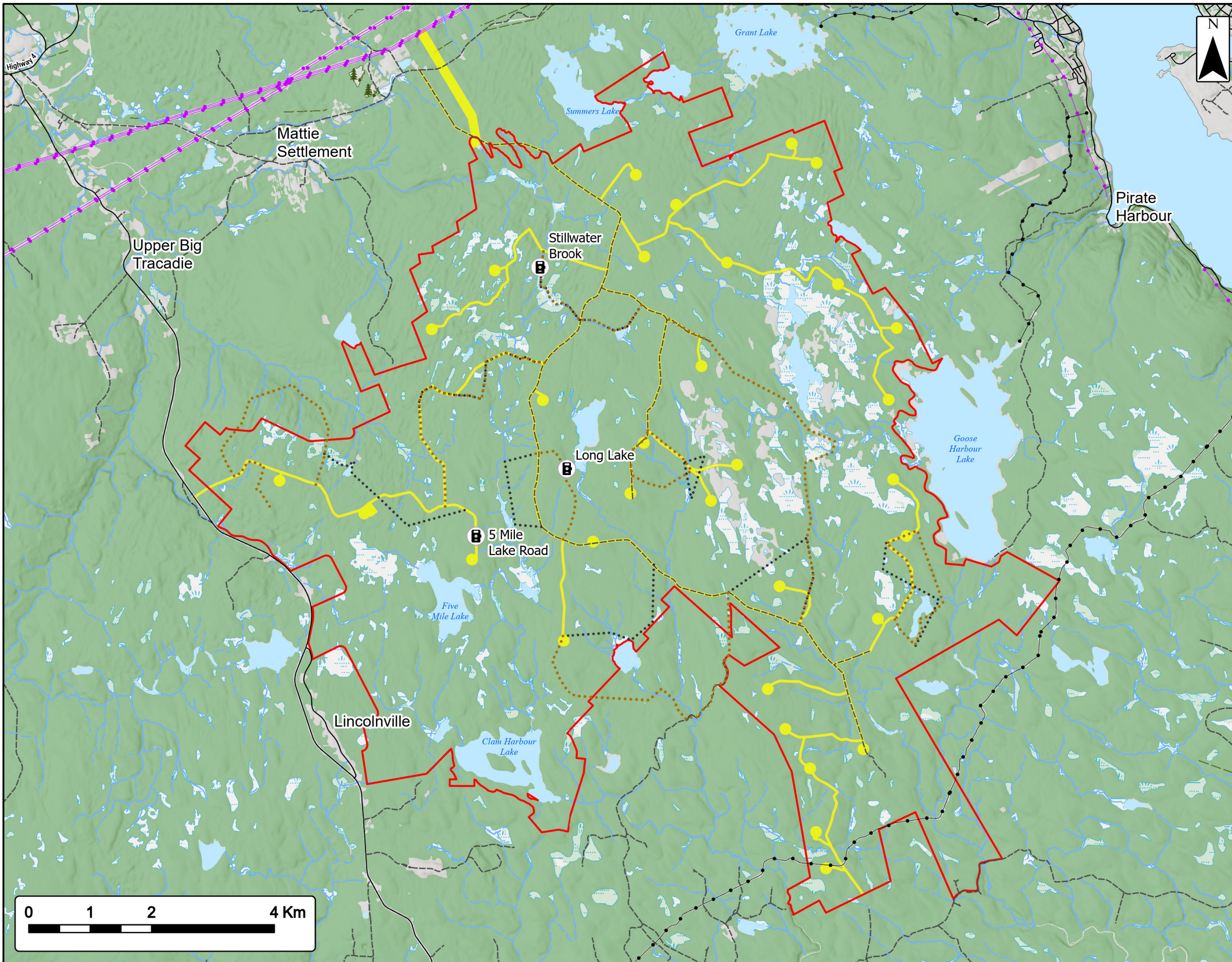
Study Area	
Assessment Area	
Potential Boreal Felt Lichen Habitat	
Transportation	
Road	
Unpaved Road	
Utilities (line)	
Existing Pipeline	
Existing Transmission Lines	
Water Features	
Mapped Stream	
Mapped Indefinite Stream	
Mapped Lakes and Rivers	
Mapped Wet Area	



Coordinate System: NAD83 UTM Zone 20N Sources: Esri Basemaps, GeoNOVA, SNSIS, NRCan, NSNRR, ACCDG, IBA Canada

Date:	Jan 2023	Project #:	21-7890
Scale:	1:60,000	Drawing #:	7.20
Drawn By:	P. Opra		
Checked By:	M. Savelle		





Goose Harbour Lake Wind Farm Project

Mammal Transects and Trail Camera Locations

- Study Area
- Assessment Area
- Trail Camera
- Winter Tracking Survey Transect
- Pellet Survey Transect
- Transportation**
- Road
- Unpaved Road
- Utilities (line)**
- Existing Pipeline
- Existing Transmission Lines
- Water Features**
- Mapped Stream
- Mapped Indefinite Stream
- Mapped Lakes and Rivers
- Mapped Wet Area



Coordinate System: NAD83 UTM Zone 20N Sources: Esri Basemaps, GeoNOVA, SNSIS, NRCan, NSNRR, ACCDG, IBA Canada

Date: Jan 2023	Project #: 21-7890
Scale: 1:60,000	Drawing #: 7.21
Drawn By: P. Opra	
Checked By: M. Savelle	

