

### Goose Harbour Lake Wind Farm Project *Overview of Fauna RAA*

Study Area

Assessment Area

Regional Assessment Area

**Transportation**

Trans-Canada Highway

Road

Unpaved Road

**Utilities (line)**

Existing Pipeline

Existing Transmission Lines

**Water Features**

Mapped Stream

Mapped Indefinite Stream

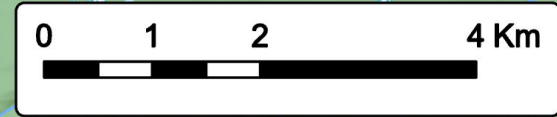
Mapped Lakes and Rivers

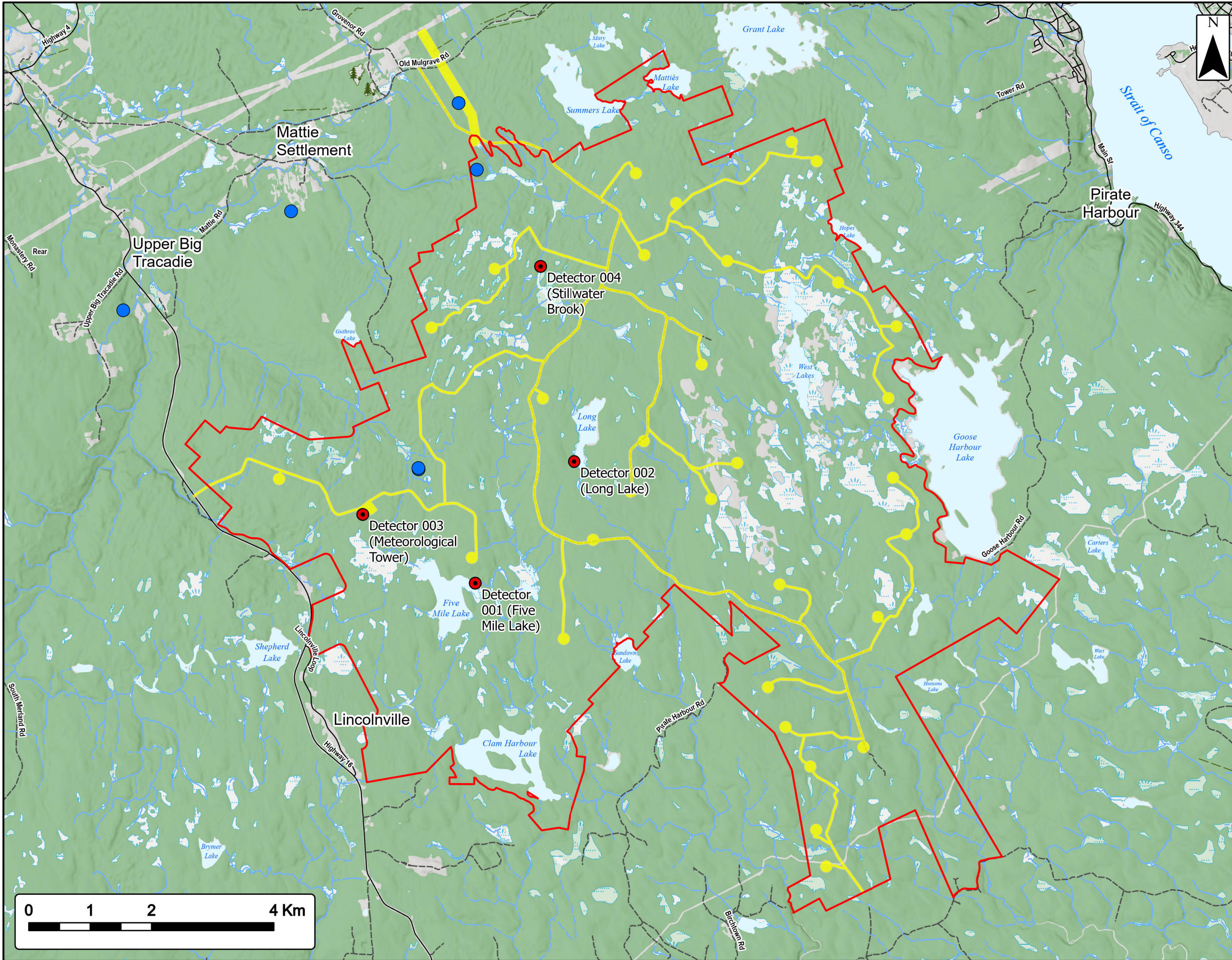
Mapped Wet Area



Coordinate System: NAD83 UTM Zone 20N Sources: ESRI Basemaps, GeoNOVA, NSTD, HERE, Garmin, USGS, NRCAN

Date: Jan 2023	Project #: 21-7890
Scale: 1:70,000	Drawing #:
Drawn By: P. Opra	7.22
Checked By: M. Savelle	





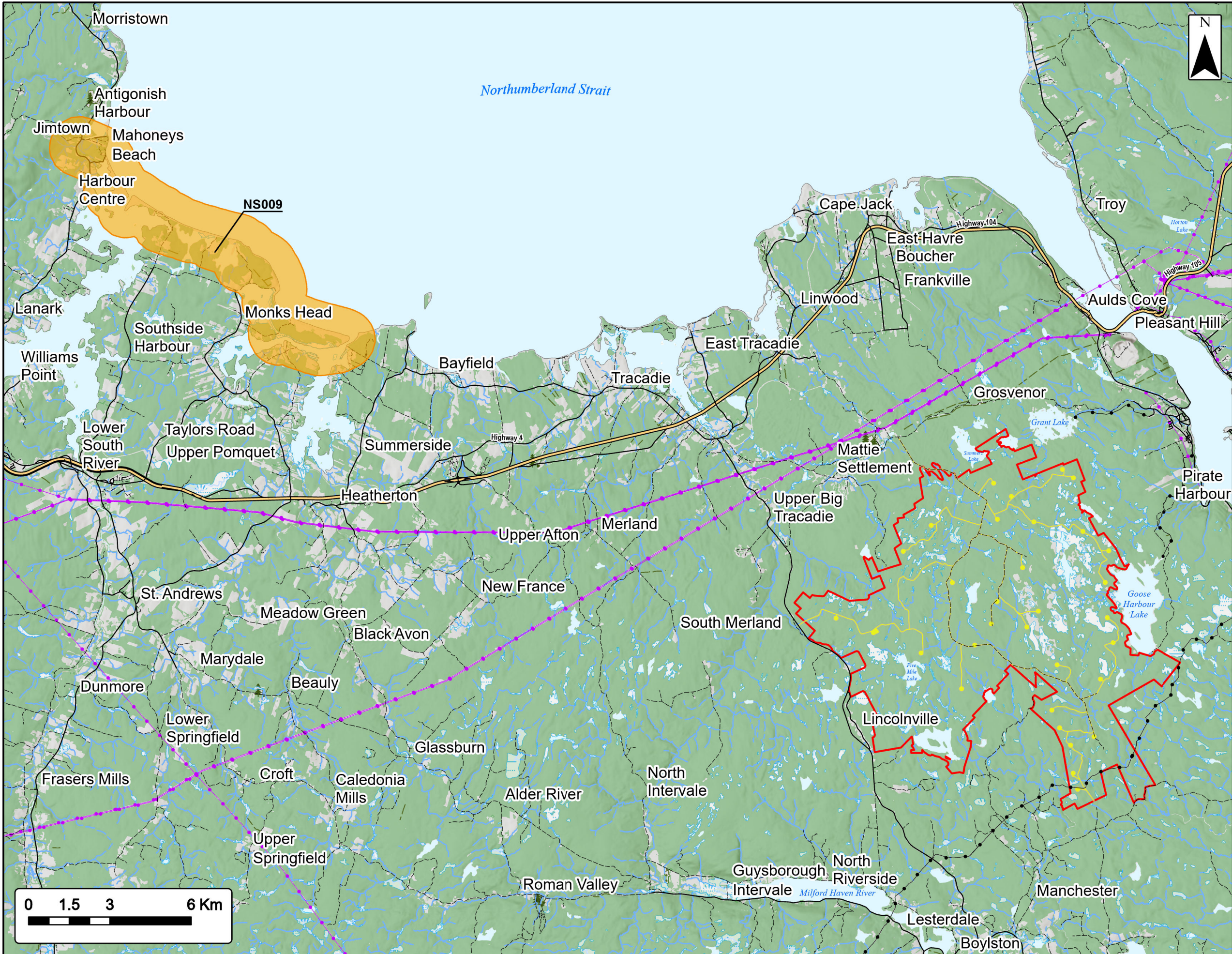
# Goose Harbour Lake Wind Farm Project Bat Assessment Results

Study Area	
Assessment Area	
Bat Monitoring Location	
Abandoned Mine Openings	
<b>Transportation</b>	
Road	
Unpaved Road	
<b>Water Features</b>	
Mapped Stream	
Mapped Indefinite Stream	
Mapped Lakes and Rivers	
Mapped Wet Area	



Coordinate System: NAD83 UTM Zone 20N		Sources: Esri Basemaps, GeoNOVA, SNSIS, NRCan, NSNRR, ACCDG, IBA Canada	
Date:	Jan 2023	Project #:	21-7890
Scale:	1:60,000	Drawing #:	<b>7.23</b>
Drawn By:	M. Savelle		
Checked By:	M. Smith		





# Goose Harbour Lake Wind Farm Project

## Overview of Nearest IBA - NS009

- Study Area
- Assessment Area
- Important Bird Area**
- IBA - NS009
- Utilities (line)**
- Existing Pipeline
- Existing Transmission Lines
- Transportation**
- Trans-Canada Highway
- Road
- Unpaved Road
- Water Features**
- Mapped Stream
- Mapped Indefinite Stream
- Mapped Lakes and Rivers
- Mapped Wet Area

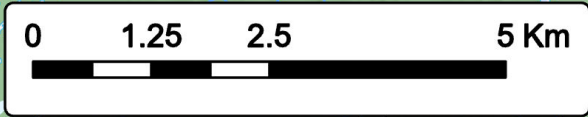
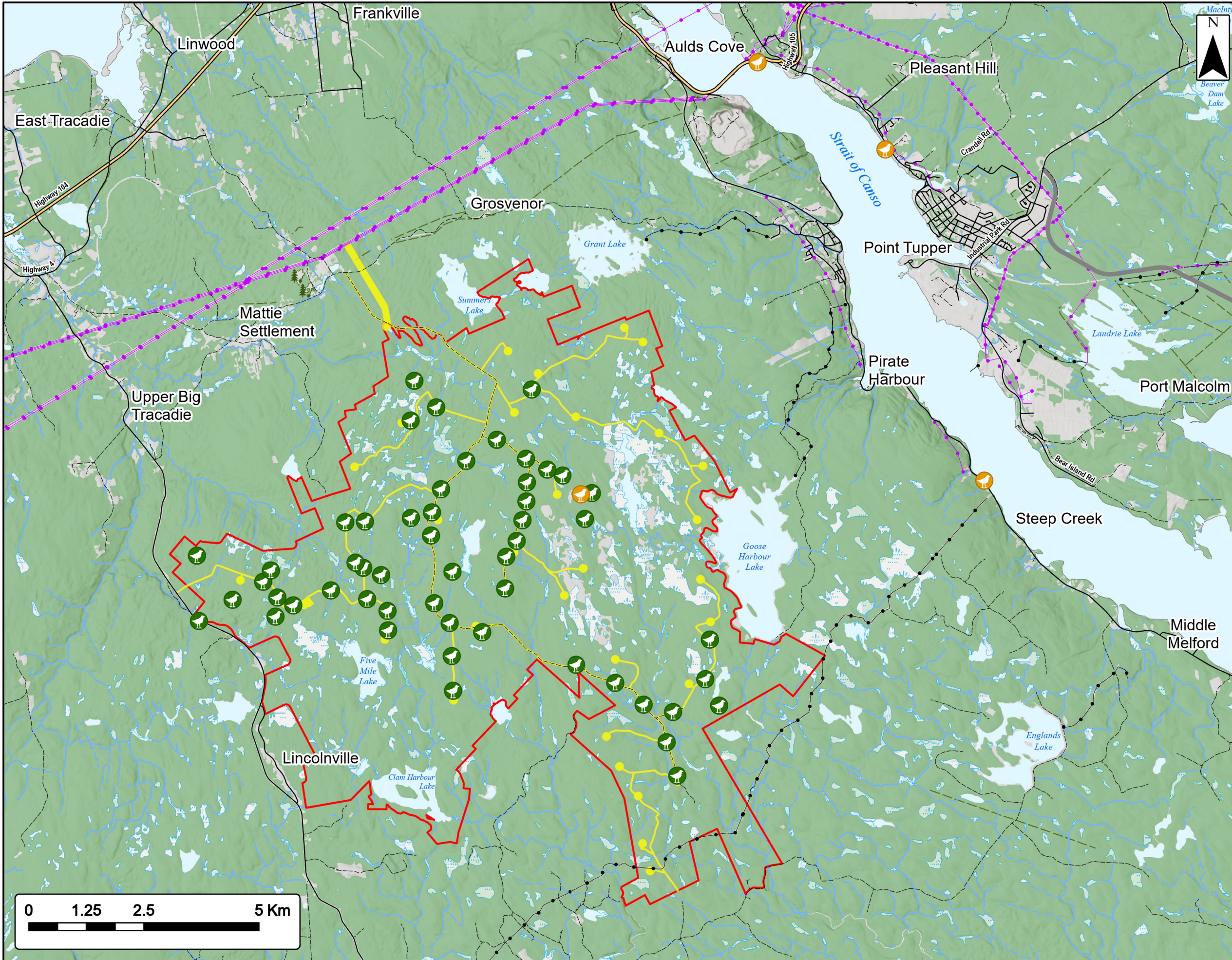


Coordinate System: NAD83 UTM Zone 20N Sources: Esri Basemaps, GeoNOVA, SNSIS, NRCAN, NSNRR, ACCDC, IBA Canada

Date: Jan 2023	Project #: 21-7890
Scale: 1:135,000	<h1>7.24</h1>
Drawn By: P. Opra	
Checked By: M. Savelle	

**Strum**  
CONSULTING

Engineering - Surveying - Environmental  
Bedford - Antigonish - Moncton - St. John's



## Goose Harbour Lake Wind Farm Project

### Overview of Bird Field Survey Locations

- Study Area
- Assessment Area
- Field Survey Locations**
- Diurnal Watch Bird SAR Observations
- Point Count Bird SAR Observations
- Transportation**
- Trans-Canada Highway
- Highway
- Road
- Unpaved Road
- Utilities (line)**
- Existing Pipeline
- Existing Transmission Lines
- Water Features**
- Mapped Stream
- Mapped Indefinite Stream
- Mapped Lakes and Rivers
- Mapped Wet Area



Coordinate System: NAD83 UTM Zone 20N  
 Sources: Esri Basemaps, GeoNOVA, SNSIS, NRCAN, NSNRR, ACCDC, IBA Canada

Date: Jan 2023	Project #: 21-7890
Scale: 1:80,000	Drawing #: <b>7.25</b>
Drawn By: P. Opra	
Checked By: M. Savelle	

