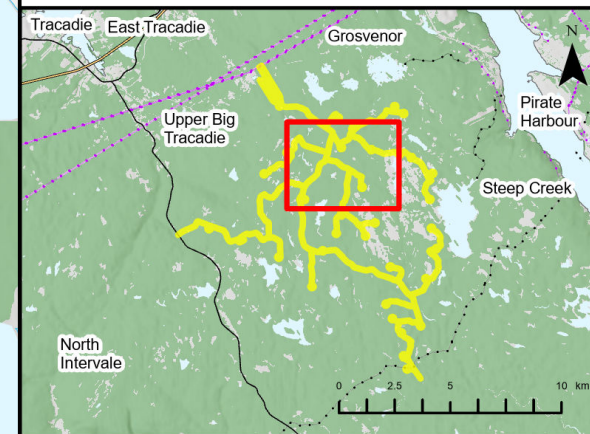
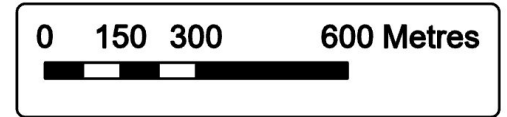


Goose Harbour Lake Wind Farm Project

Overview of Point Count Bird SAR Observations

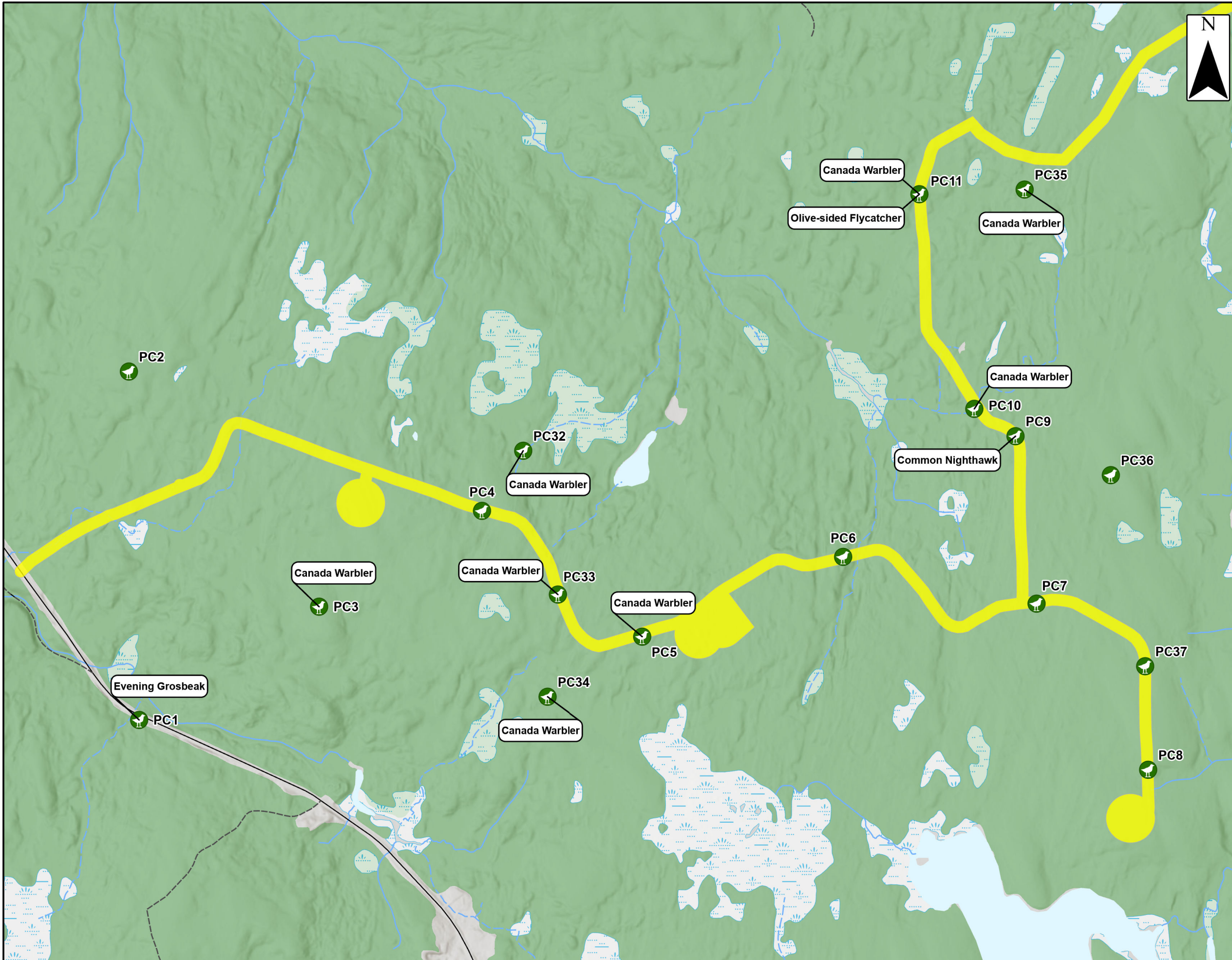
- Assessment Area
- Point Count Bird SAR Observations
- Transportation**
- Unpaved Road
- Water Features**
- Mapped Stream
- Mapped Indefinite Stream
- Mapped Lakes and Rivers
- Mapped Wet Area



Coordinate System: NAD83 UTM Zone 20N Sources: Esri Basemaps, GeoNOVA, SNSIS, NRCAN, NSNRR, ACCDC, IBA Canada

Date: Jan 2023	Project #: 21-7890
Scale: 1:15,000	Drawing #: 7.26A
Drawn By: P. Opra	7.26A
Checked By: M. Savelle	

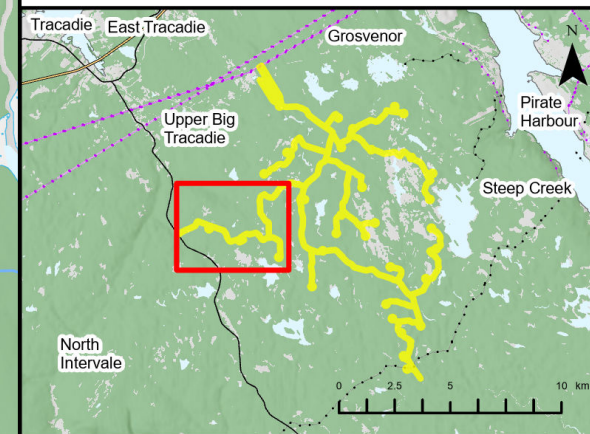
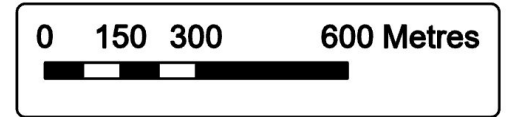




Goose Harbour Lake Wind Farm Project

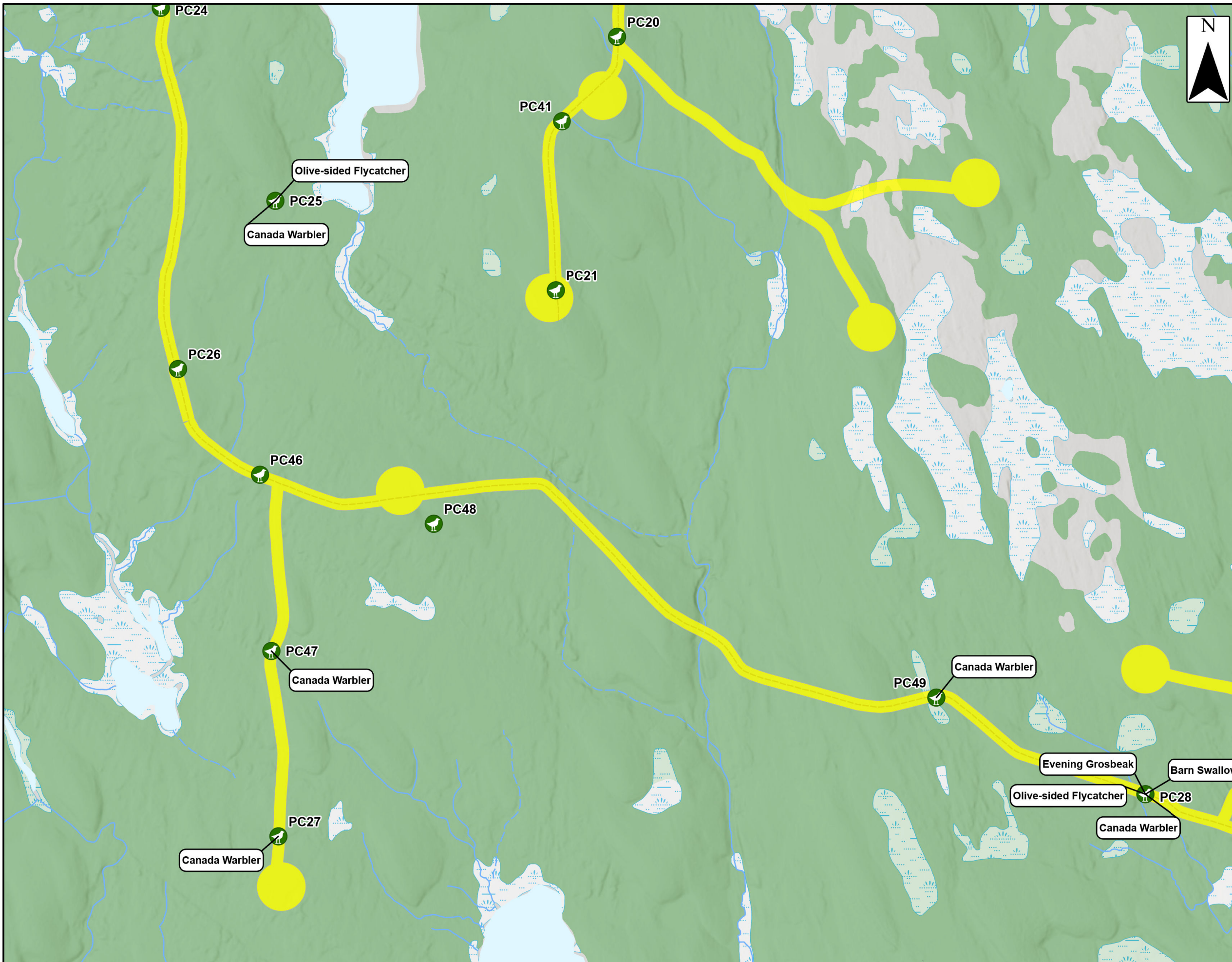
Overview of Point Count Bird SAR Observations

- Assessment Area
- Point Count Bird SAR Observations
- Transportation**
- Road
- Unpaved Road
- Water Features**
- Mapped Stream
- Mapped Indefinite Stream
- Mapped Lakes and Rivers
- Mapped Wet Area



Coordinate System: NAD83 UTM Zone 20N		Sources: Esri Basemaps, GeoNOVA, SHSIS, NRCAN, NSNRR, ACCDC, IBA Canada	
Date:	Jan 2023	Project #:	21-7890
Scale:	1:15,000	Drawing #:	7.26B
Drawn By:	P. Opra		
Checked By:	M. Savelle		

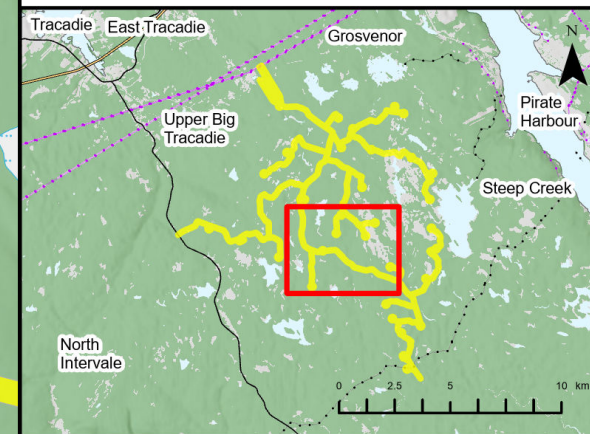
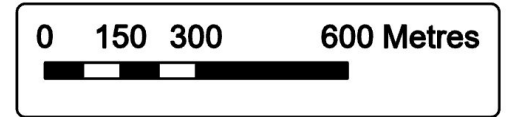




Goose Harbour Lake Wind Farm Project

Overview of Point Count Bird SAR Observations

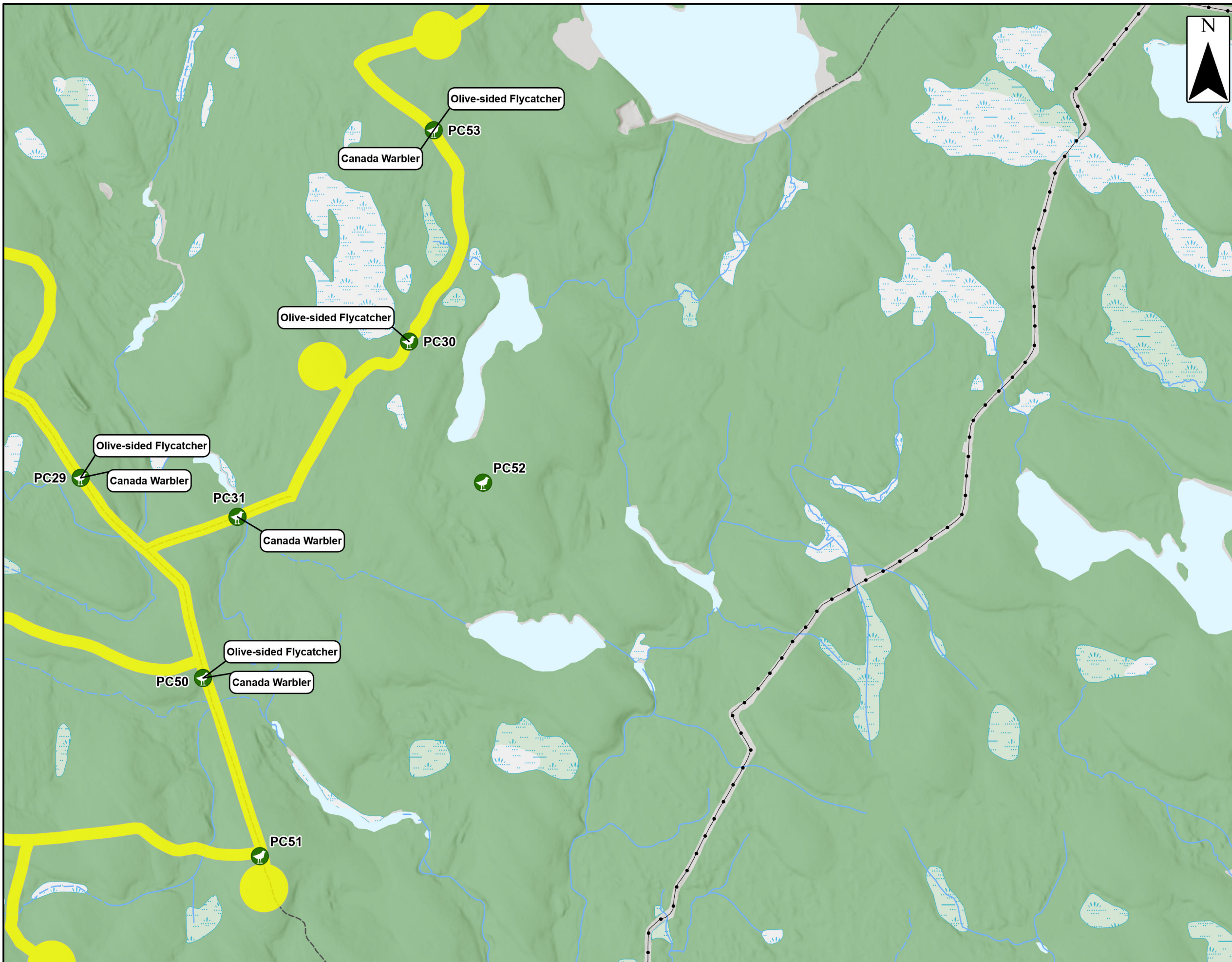
- Assessment Area
- Point Count Bird SAR Observations
- Transportation**
- Unpaved Road
- Water Features**
- Mapped Stream
- Mapped Indefinite Stream
- Mapped Lakes and Rivers
- Mapped Wet Area



Coordinate System: NAD83 UTM Zone 20N Sources: Esri Basemaps, GeoNOVA, SNSIS, NRCan, NSNRR, ACCDC, IBA Canada

Date: Jan 2023	Project #: 21-7890
Scale: 1:15,000	Drawing #: 7.26C
Drawn By: P. Opra	7.26C
Checked By: M. Savelle	

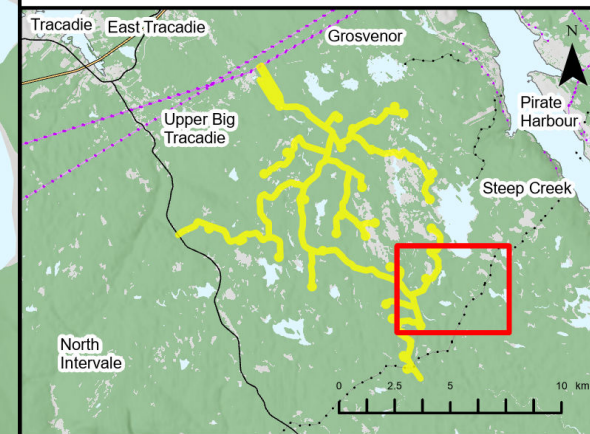
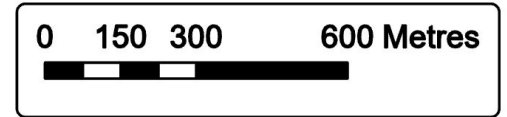




Goose Harbour Lake Wind Farm Project

Overview of Point Count Bird SAR Observations

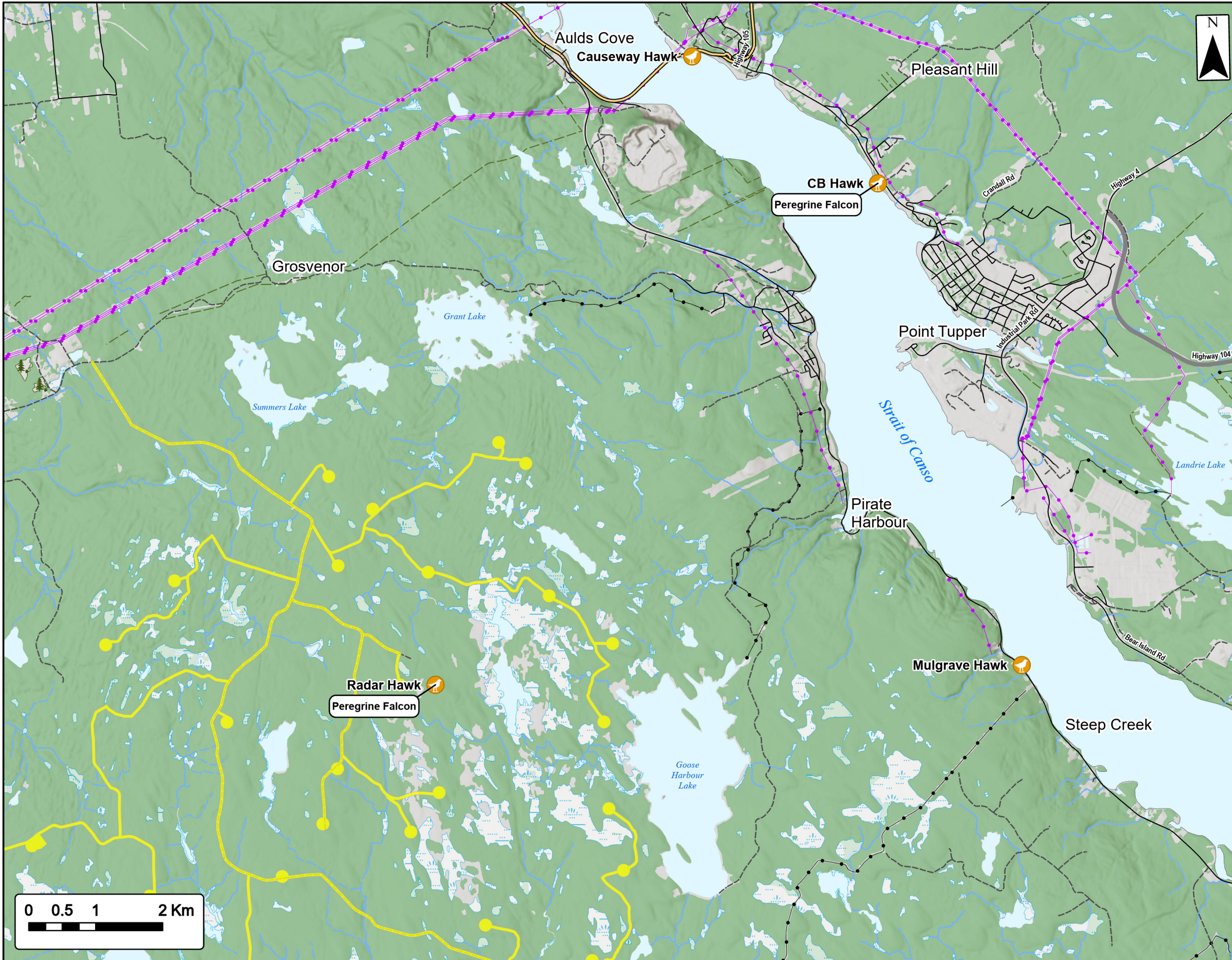
- Assessment Area
- Point Count Bird SAR Observations
- Transportation**
- Road
- Unpaved Road
- Utilities (line)**
- Existing Pipeline
- Water Features**
- Mapped Stream
- Mapped Indefinite Stream
- Mapped Lakes and Rivers
- Mapped Wet Area



Coordinate System: NAD83 UTM Zone 20N Sources: Esri Basemaps, GeoNOVA, SHSIS, NRCan, NSNRR, ACCDC, IBA Canada

Date: Jan 2023	Project #: 21-7890
Scale: 1:15,000	Drawing #: 7.26D
Drawn By: P. Opra	7.26D
Checked By: M. Savelle	





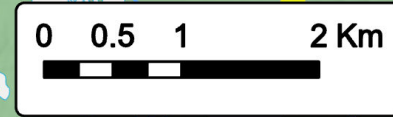
Goose Harbour Lake Wind Farm Project

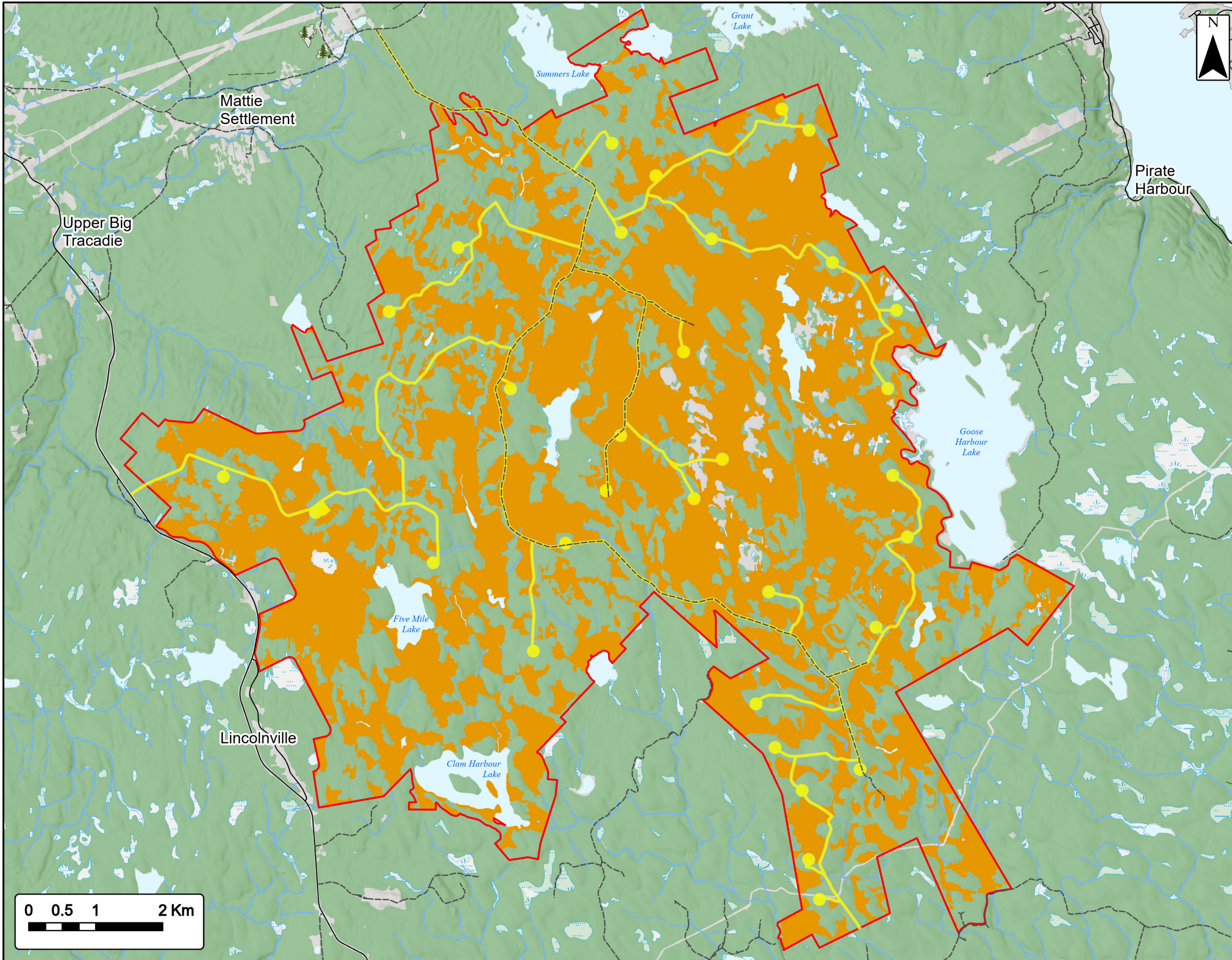
Diurnal Watch Bird SAR Observations

- Assessment Area
- Diurnal Watch Bird SAR Observations
- Transportation**
- Trans-Canada Highway
- Highway
- Road
- Unpaved Road
- Utilities (line)**
- Existing Pipeline
- Existing Transmission Lines
- Water Features**
- Mapped Stream
- Mapped Indefinite Stream
- Mapped Lakes and Rivers
- Mapped Wet Area



Coordinate System: NAD83 UTM Zone 20N		Sources: ESRI Basemaps, GeoNOVA, NSTD, HERE, Garmin, USGS, NRCAN	
Date:	Jan 2023	Project #:	21-7890
Scale:	1:55,000	Drawing #:	7.27
Drawn By:	P. Opra		
Checked By:	M. Savelle		





Goose Harbour Lake Wind Farm Project

Canada Warbler Habitat

Study Area	
Assessment Area	
Canada Warbler	
Transportation	
Road	
Unpaved Road	
Water Features	
Mapped Stream	
Mapped Indefinite Stream	
Mapped Lakes and Rivers	
Mapped Wet Area	



Coordinate System: NAD83 UTM Zone 20N
Sources: Esri Basemaps, GeoNOVA, SNSIS, NRCAN, NSNRR, ACCDC, IBA Canada

Date:	Jan 2023	Project #:	21-7890
Scale:	1:55,000	Drawing #:	7.28
Drawn By:	P. Opra		
Checked By:	M. Savelle		

