

Goose Harbour Lake Wind Farm Project Shadow Flicker - Worst Case Scenario

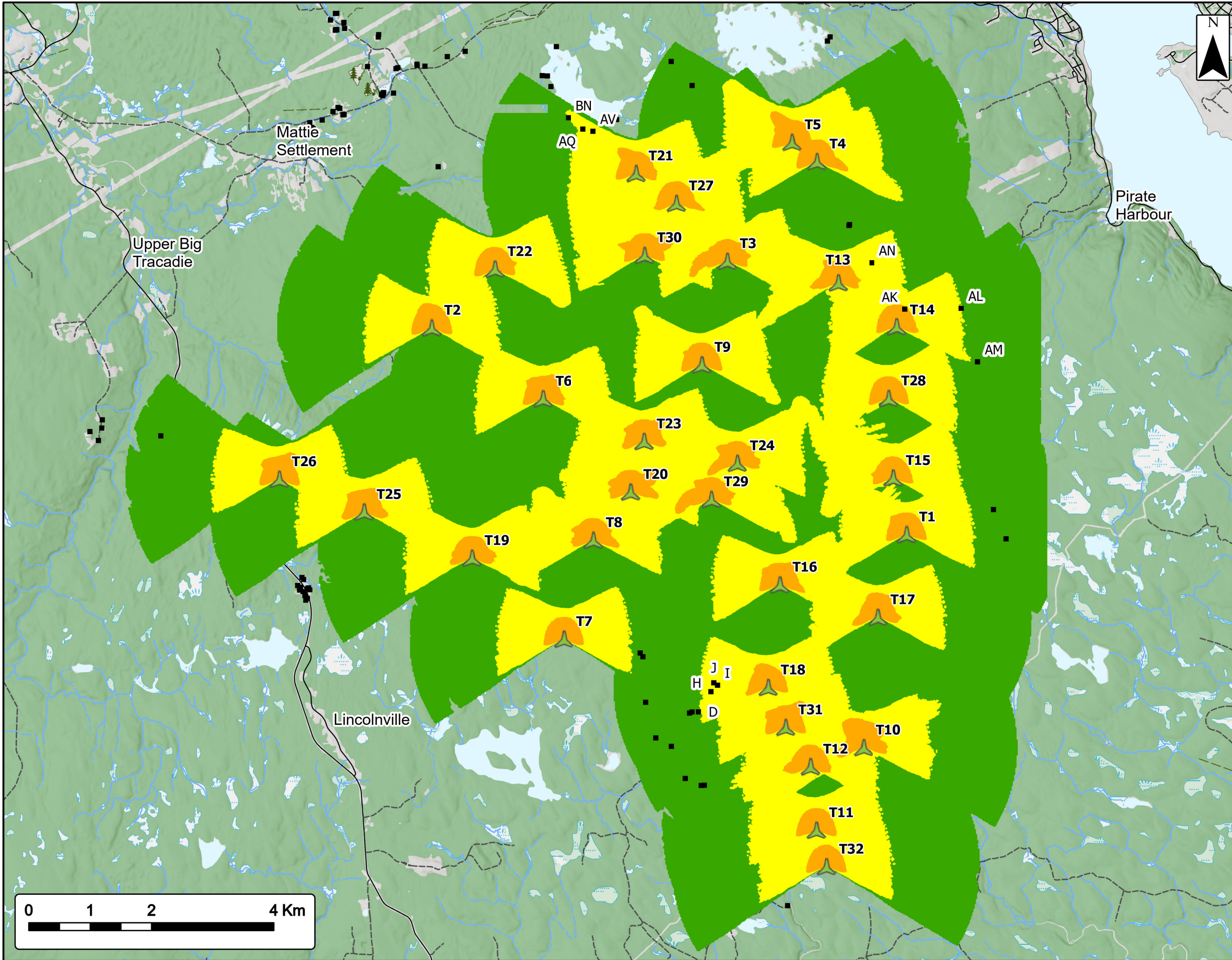
- Proposed Turbine Location
- Non Participating Receptors within 2 km of Assessment Area
- Predicted Shadow Hours/Year (Worst Case)**
- 0-30
- 30-100
- 100+
- Transportation**
- Road
- Unpaved Road
- Water Features**
- Mapped Stream
- Mapped Indefinite Stream
- Mapped Lakes and Rivers
- Mapped Wet Area



Coordinate System: NAD83 UTM Zone 20N
Sources: Esri Basemaps, GeoNOVA, SNSIS, NRCan, NSNRR, ACCDG, IBA Canada


Date: Jan 2023	Project #: 21-7890
Scale: 1:60,000	Drawing #: 10.1A
Drawn By: M. Savelle	
Checked By: M. Smith	









Goose Harbour Lake Wind Farm Project

Shadow Flicker - Worst Case Scenario



Proposed Turbine Location 

Non Participating Receptors within 2 km of Assessment Area 





Predicted Shadow Minutes/Day (Worst Case)

- 0-30 
- 30-100 
- 100+ 

Transportation

- Road 
- Unpaved Road 

Water Features

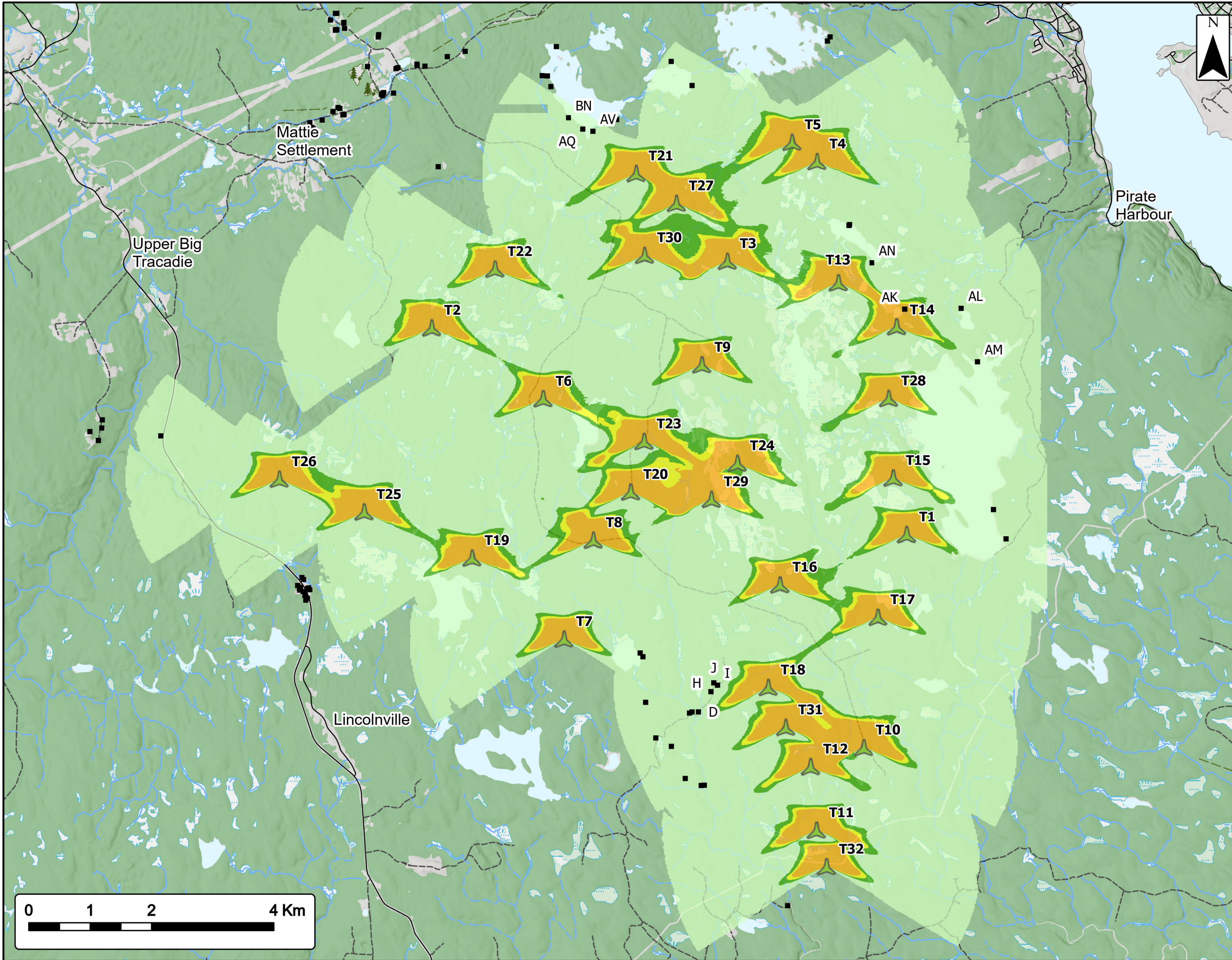
- Mapped Stream 
- Mapped Indefinite Stream 
- Mapped Lakes and Rivers 
- Mapped Wet Area 




Coordinate System: NAD83 UTM Zone 20N
Sources: Esri Basemaps, GeoNOVA, SNSIS, NRCan, NSNRR, ACCDG, IBA Canada


Date:	Jan 2023	Project #:	21-7890
Scale:	1:60,000	Drawing #:	10.1B
Drawn By:	M. Savelle		
Checked By:	M. Smith		



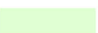





Goose Harbour Lake Wind Farm Project Shadow Flicker - Real Case Scenario



Proposed Turbine Location 

Non Participating Receptors within 2 km of Assessment Area 





Predicted Shadow Hours/Day (Real Case)

- 0 - 30 
- 30 - 40 
- 40 - 50 
- 50+ 

Transportation

- Road 
- Unpaved Road 

Water Features

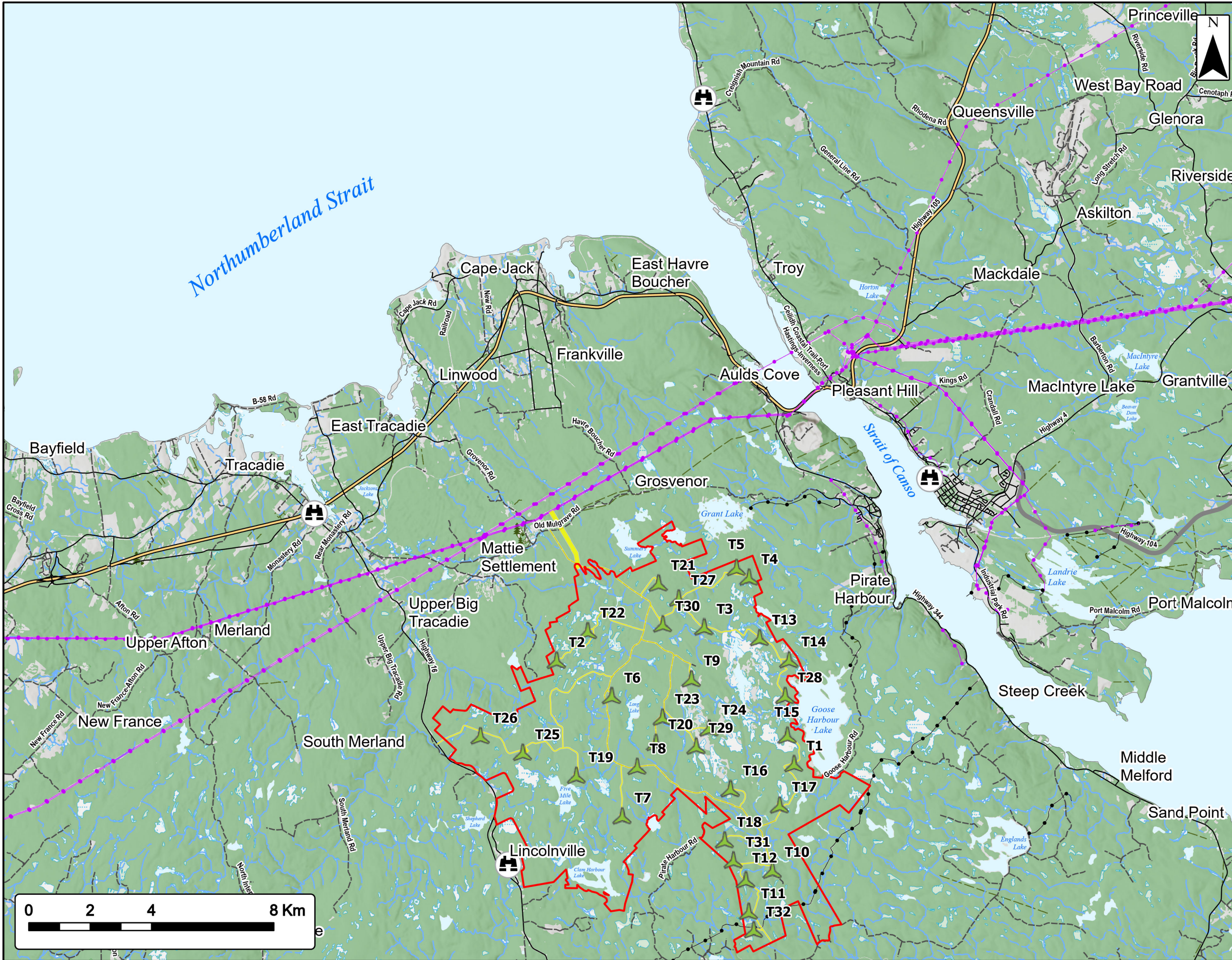
- Mapped Stream 
- Mapped Indefinite Stream 
- Mapped Lakes and Rivers 
- Mapped Wet Area 



Coordinate System: NAD83 UTM Zone 20N Sources: Esri Basemaps, GeoNOVA, SNSIS, NRCan, NSNRR, ACCDG, IBA Canada

Date:	Jan 2023	Project #:	21-7890
Scale:	1:60,000	Drawing #:	10.1C
Drawn By:	M. Savelle		
Checked By:	M. Smith		





Goose Harbour Lake Wind Farm Project *Visual Simulation*

Proposed Turbine Location	
Study Area	
Assessment Area	
Camera Locations	
Transportation	
Trans-Canada Highway	
Highway	
Road	
Unpaved Road	
Utilities (line)	
Existing Pipeline	
Existing Transmission Lines	
Water Features	
Mapped Stream	
Mapped Indefinite Stream	
Mapped Wet Area	



Coordinate System: NAD83 UTM Zone 20N		Sources: Esri Basemaps, GeoNOVA, SNSIS, NRCAN, NSNRR, ACCOG, IBA Canada	
Date:	Jan 2023	Project #:	21-7890
Scale:	1:120,000	Drawing #:	10.2A
Drawn By:	M. Savelle		
Checked By:	M. Smith		



Strum
CONSULTING
Engineering - Surveying - Environmental
Bedford - Antigonish - Moncton - St. John's