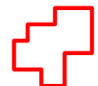







Goose Harbour Lake Wind Farm Project

Overview of Mi'kmaw Reserve Lands

Study Area 

First Nation

- Eskasoni 
- Membertou 
- Paqtnkek 
- Potlotek 
- Wagmatcook 
- We'koqma'q 

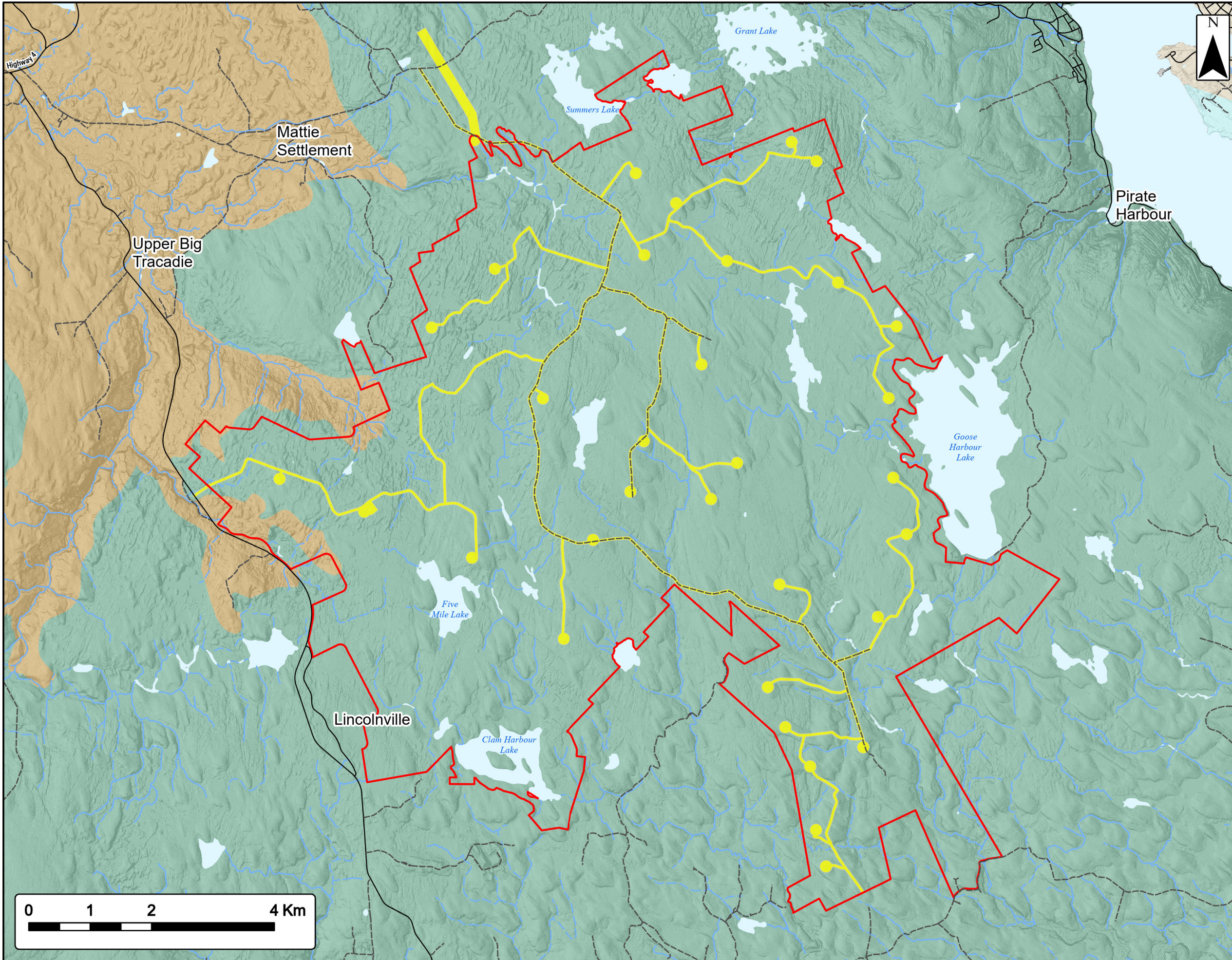
* Malagawatch 4 shared amongst Eskasoni, Membertou, Potlotek, Wagmatcook, and We'koqma'q



Sources: Esri Basemaps, GeoNOVA, SNSIS, NRCan, NSNRR, ACCDC, IBA Canada, NS Department of Health, Government of Canada

Date:	Jan 2023	Project #:	21-7890
Scale:	1:480,000	Drawing #:	5.1
Drawn By:	P. Opra		
Checked By:	N. Myers		





Goose Harbour Lake Wind Farm Project Overview of Ecodistricts

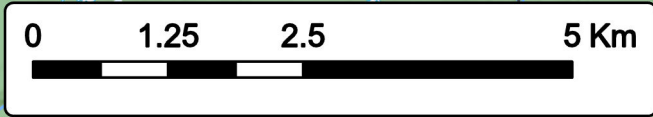
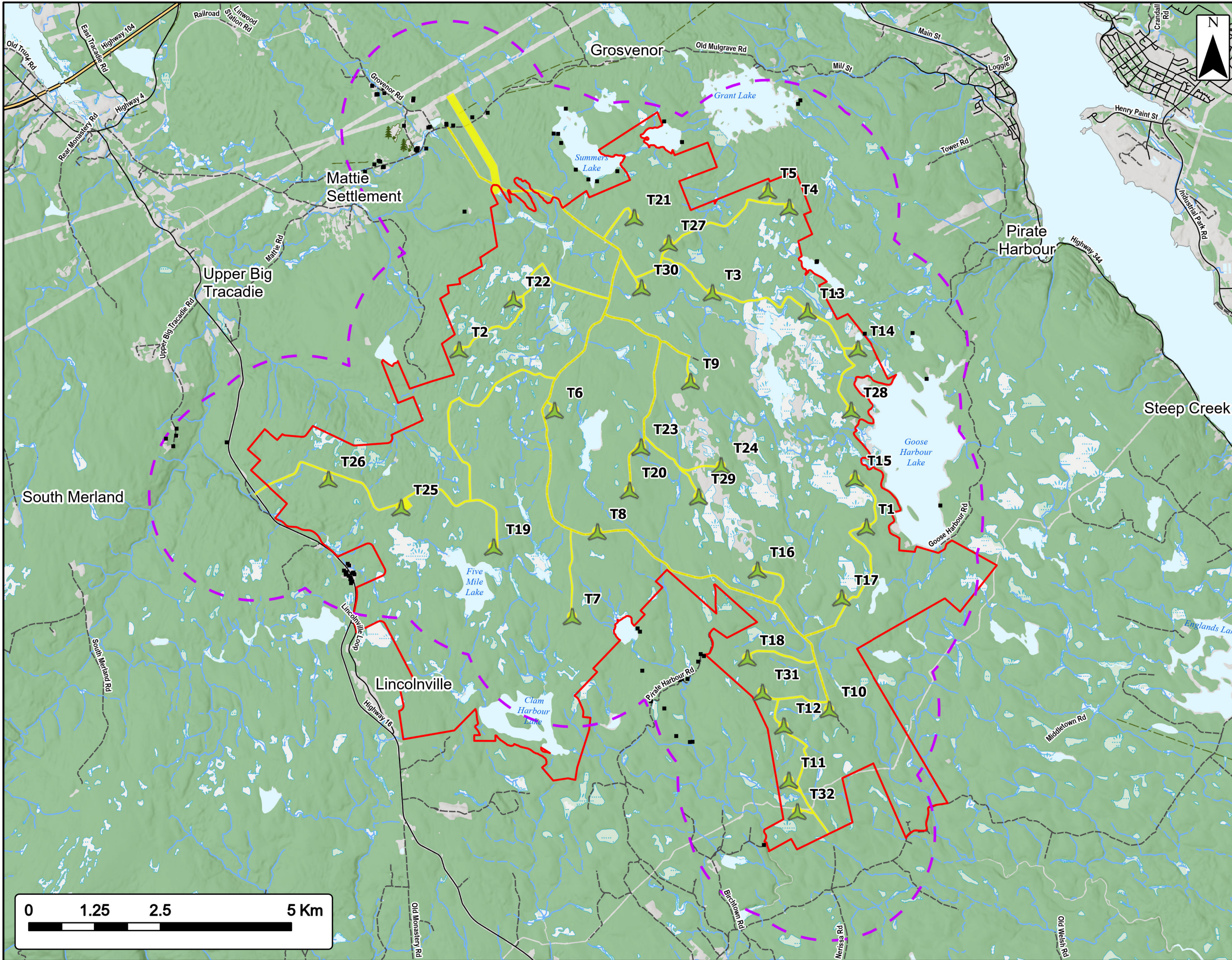
- Study Area
- Assessment Area
- Ecodistricts**
- Mulgrave Plateau
- Bras d'Or Lowlands
- St. George's Bay
- Cape Breton Coastal
- Transportation**
- Road
- Unpaved Road
- Water Features**
- Mapped Stream
- Mapped Indefinite Stream
- Mapped Lakes and Rivers



Coordinate System: NAD83 UTM Zone 20N Sources: Esri Basemaps, GeoNOVA, SNSIS, NRCAN, NSNRR, ACCDC, IBA Canada

Date: Jan 2023	Project #: 21-7890
Scale: 1:60,000	Drawing #:
Drawn By: P. Opra	7.1
Checked By: M. Savelle	





Goose Harbour Lake Wind Farm Project

Receptors

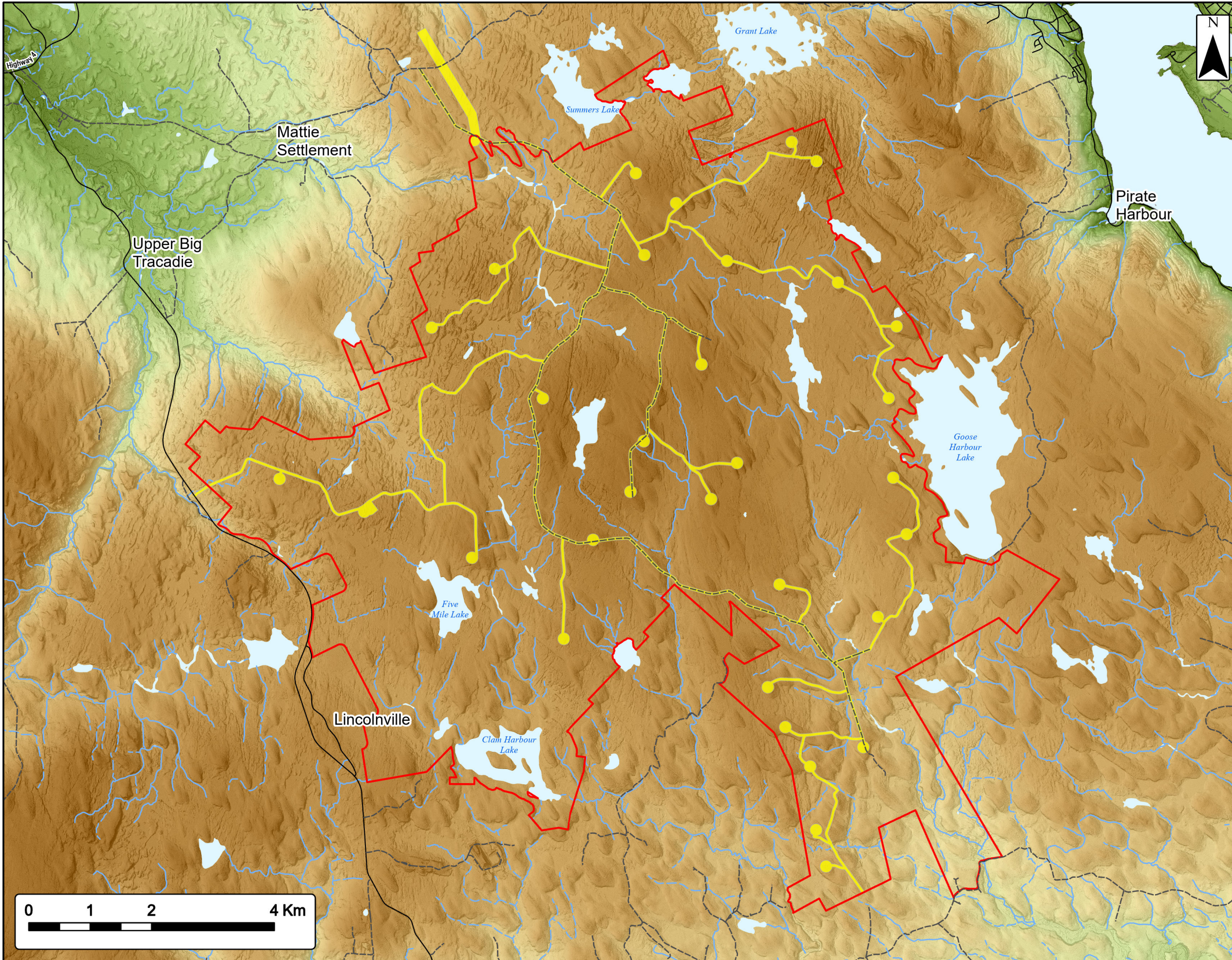
- Proposed Turbine Location
- Study Area
- Assessment Area
- Non Participating Buildings within 2km of the Assessment Area
- 2 km Assessment Area Buffer
- Transportation**
- Trans-Canada Highway
- Road
- Unpaved Road
- Water Features**
- Mapped Stream
- Mapped Indefinite Stream
- Mapped Lakes and Rivers
- Mapped Wet Area



Coordinate System: NAD83 UTM Zone 20N
 Sources: Esri Basemaps, GeoNOVA, SNSIS, NRCan, NSNRR, ACCDG, IBA Canada


Date: Jan 2023	Project #: 21-7890
Scale: 1:70,000	Drawing #: 7.2
Drawn By: M. Savelle	
Checked By: M. Smith	







Goose Harbour Lake Wind Farm Project


Overview of Geomorphology

Study Area 


Assessment Area 


Transportation


Road 

Unpaved Road 

Water Features

Mapped Stream 

Mapped Indefinite Stream 

Mapped Lakes and Rivers 

Elevation (Metres ASL)

195


140

110

70

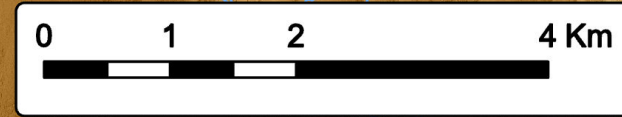
40

0




Coordinate System: NAD83 UTM Zone 20N Sources: Esri Basemaps, GeoNOVA, SNSIS, NRCan, NSNRR, ACCDC, IBA Canada

Date:	Jan 2023	Project #:	21-7890
Scale:	1:60,000	Drawing #:	7.3
Drawn By:	P. Opra		
Checked By:	M. Savelle		




Strum
CONSULTING
Engineering - Surveying - Environmental
Bedford - Antigonish - Moncton - St. John's