

# Goose Harbour Lake Wind Farm Project

## Groundwater Wells

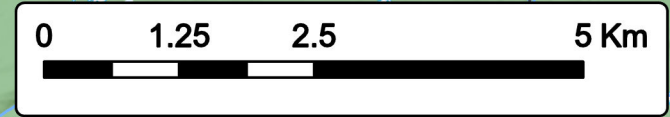


- Proposed Turbine Location
- Study Area
- Assessment Area
- Groundwater Well within 2km of the Assessment Area**
- DRILLED
- 2 km Assessment Area Buffer
- Transportation**
- Trans-Canada Highway
- Road
- Unpaved Road
- Water Features**
- Mapped Stream
- Mapped Indefinite Stream
- Mapped Lakes and Rivers
- Mapped Wet Area

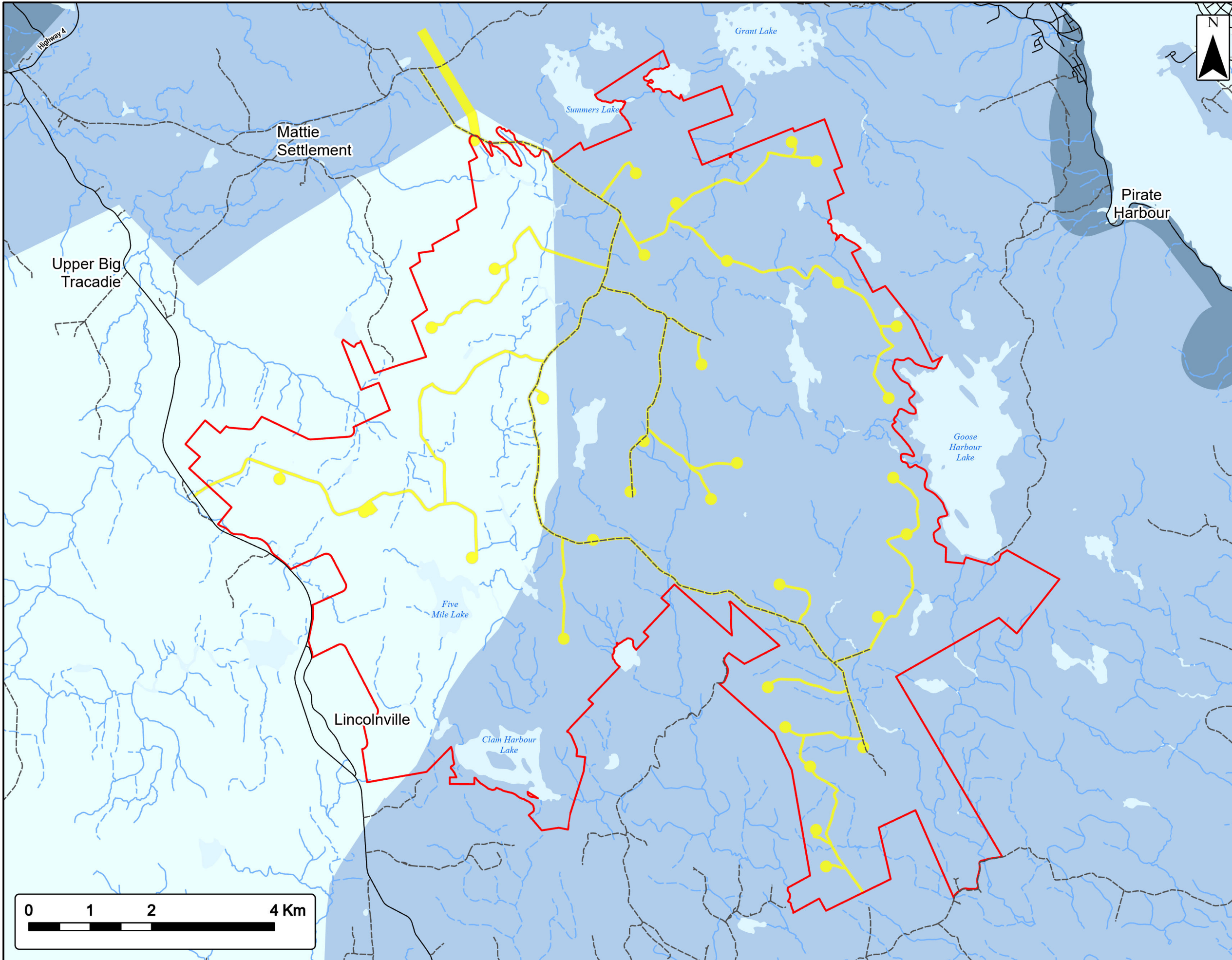


Coordinate System: NAD83 UTM Zone 20N  
 Sources: Esri Basemaps, GeoNOVA, SNSIS, NRCan, NSNRR, ACCOG, IBA Canada

Date: Jan 2023	Project #: 21-7890
Scale: 1:70,000	Drawing #: <b>7.7</b>
Drawn By: M. Savelle	
Checked By: M. Smith	







# Goose Harbour Lake Wind Farm Project

## Overview of Karst Risk

- Study Area
- Assessment Area
- Karst Risk**
- High Risk
- Medium Risk
- Low Risk
- Transportation**
- Road
- Unpaved Road
- Water Features**
- Mapped Stream
- Mapped Indefinite Stream
- Mapped Lakes and Rivers

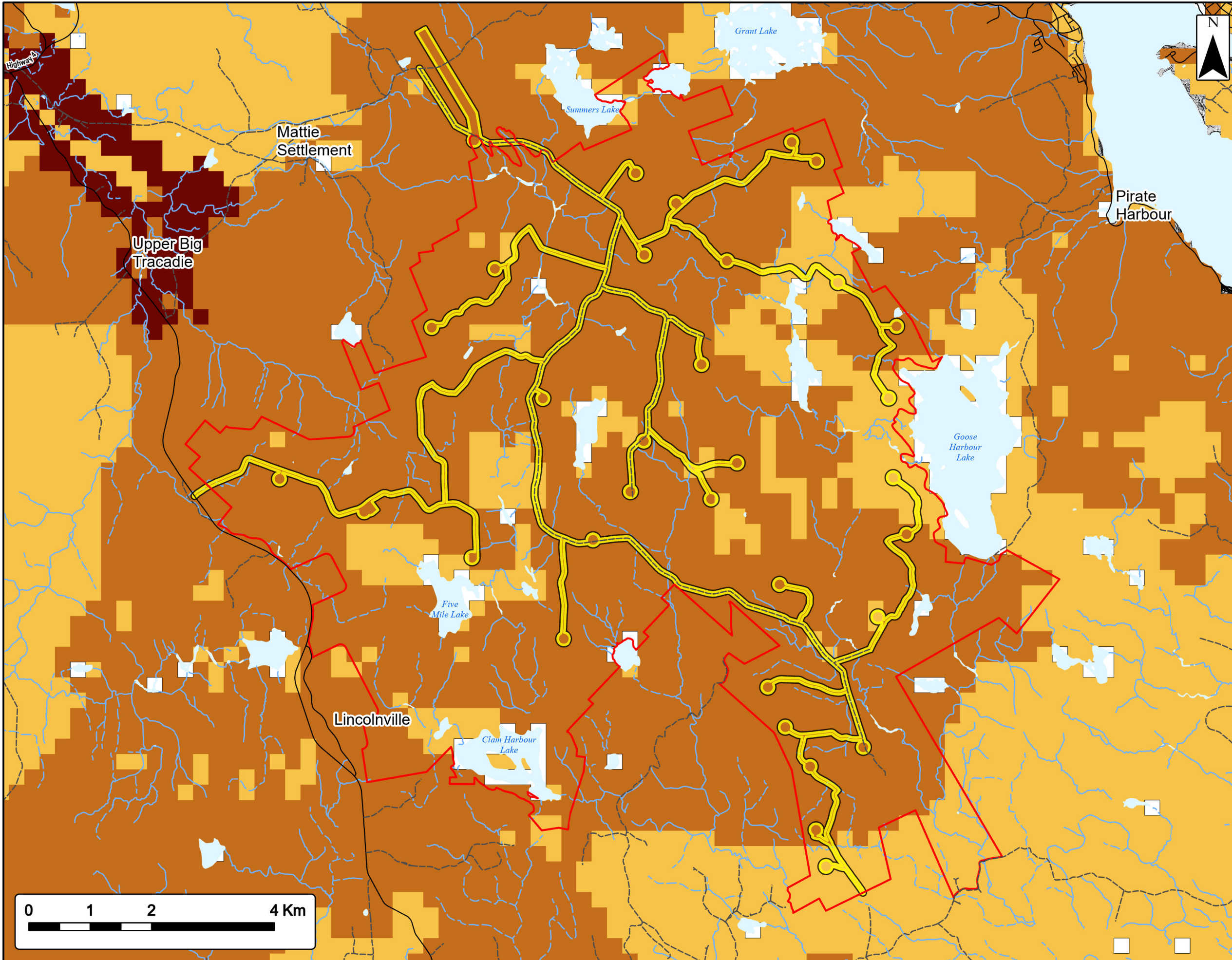


Coordinate System: NAD83 UTM Zone 20N Sources: Esri Basemaps, GeoNOVA, SNSIS, NRCAN, NSNRR, ACCDC, IBA Canada

Date: Jan 2023	Project #: 21-7890
Scale: 1:60,000	Drawing #: <b>7.8</b>
Drawn By: P. Opra	
Checked By: M. Savelle	







## Goose Harbour Lake Wind Farm Project

Overview of Radon Potential

Study Area	
Assessment Area	
<b>Radon Potential</b>	
High (171-275)	
Medium (121-170)	
Low (11-120)	
Water Feature/No Data (0-10)	
<b>Transportation</b>	
Road	
Unpaved Road	
<b>Water Features</b>	
Mapped Stream	
Mapped Indefinite Stream	
Mapped Lakes and Rivers	

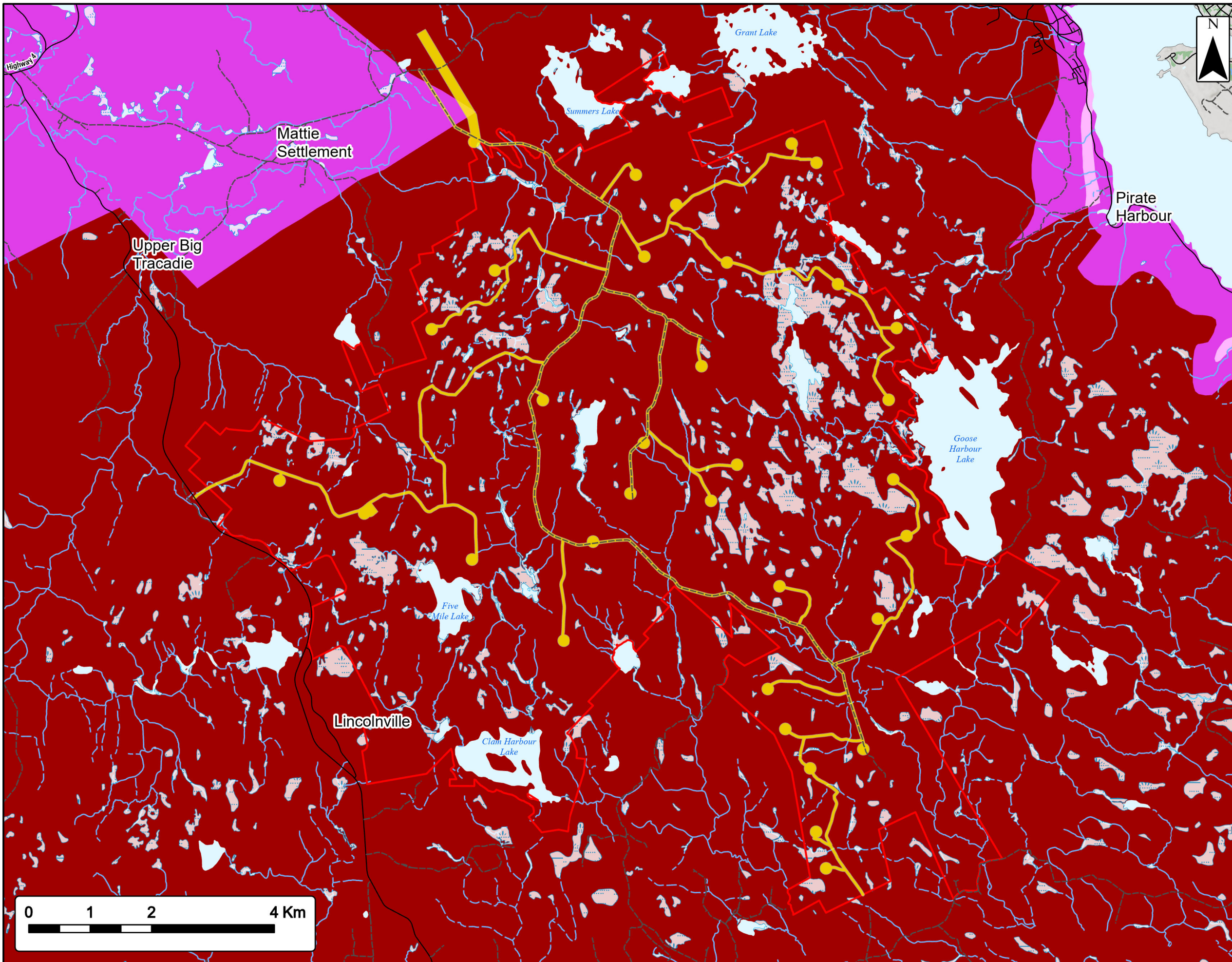


Coordinate System: NAD83 UTM Zone 20N  
Sources: Esri Basemaps, GeoNOVA, SNSIS, NRCan, NSNRR, ACCDC, IBA Canada

Date:	Jan 2023	Project #:	21-7890
Scale:	1:60,000	Drawing #:	<b>7.9</b>
Drawn By:	P. Opra		
Checked By:	M. Savelle		







### Goose Harbour Lake Wind Farm Project *Arsenic in Well Water Risk*

Study Area

Assessment Area

**Arsenic Risk in Bedrock Water Wells**

High Risk

Medium Risk

Low Risk

**Transportation**

Road

Unpaved Road

**Water Features**

Mapped Stream

Mapped Indefinite Stream

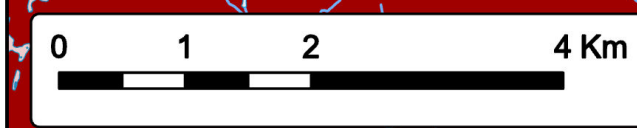
Mapped Lakes and Rivers

Mapped Wet Area

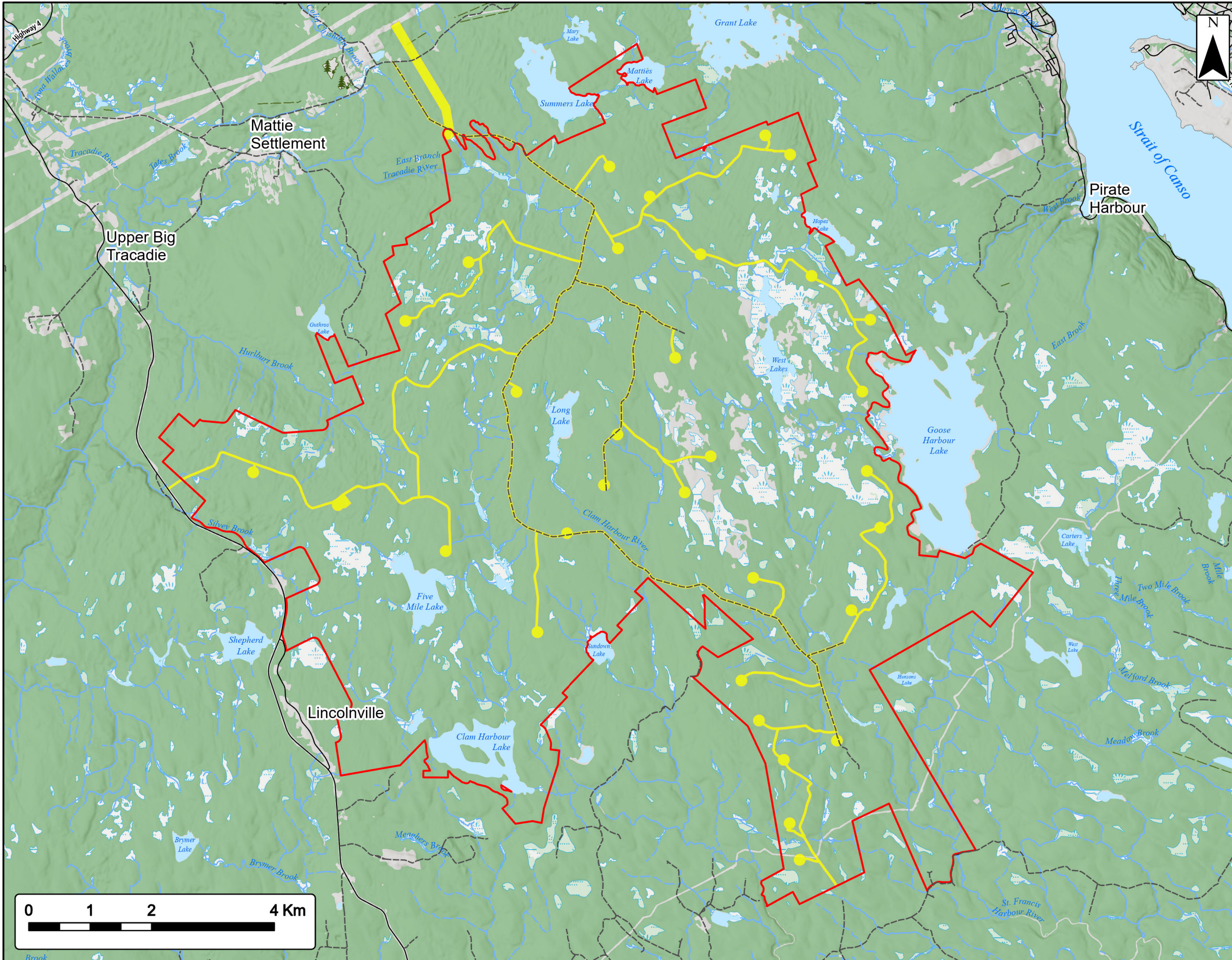


Coordinate System: NAD83 UTM Zone 20N Sources: Esri Basemaps, GeoNOVA, SNSIS, NRCan, NSNRR, ACCDG, IBA Canada

Date: Jan 2023	Project #: 21-7890
Scale: 1:60,000	Drawing #:
Drawn By: P. Opra	7.10
Checked By: M. Savelle	







# Goose Harbour Lake Wind Farm Project

Overview of Carvec and NSTDB Freshwater Data

Study Area	
Assessment Area	
<b>Transportation</b>	
Road	
Unpaved Road	
<b>Water Features</b>	
Mapped Stream	
Mapped Indefinite Stream	
Mapped Lakes and Rivers	
Mapped Wet Area	



Coordinate System: NAD83 UTM Zone 20N Sources: Esri Basemaps, GeoNOVA, SNSIS, NRCAN, NSNRR, ACCDG, IBA Canada

Date:	Jan 2023	Project #:	21-7890
Scale:	1:60,000	Drawing #:	<b>7.11</b>
Drawn By:	P. Opra		
Checked By:	M. Savelle		

