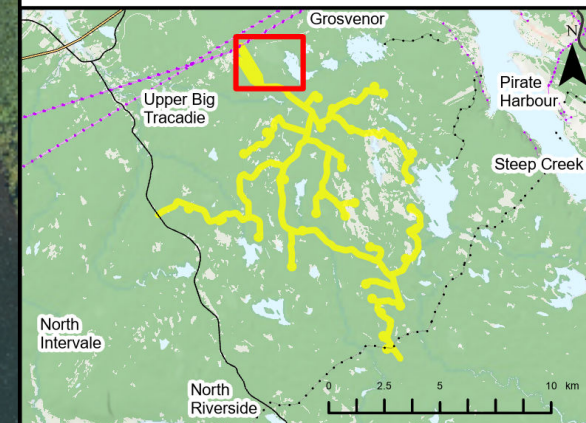
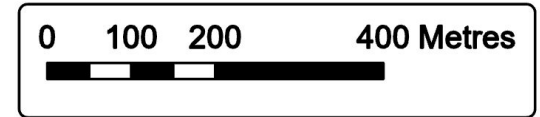




Goose Harbour Lake Wind Farm Project

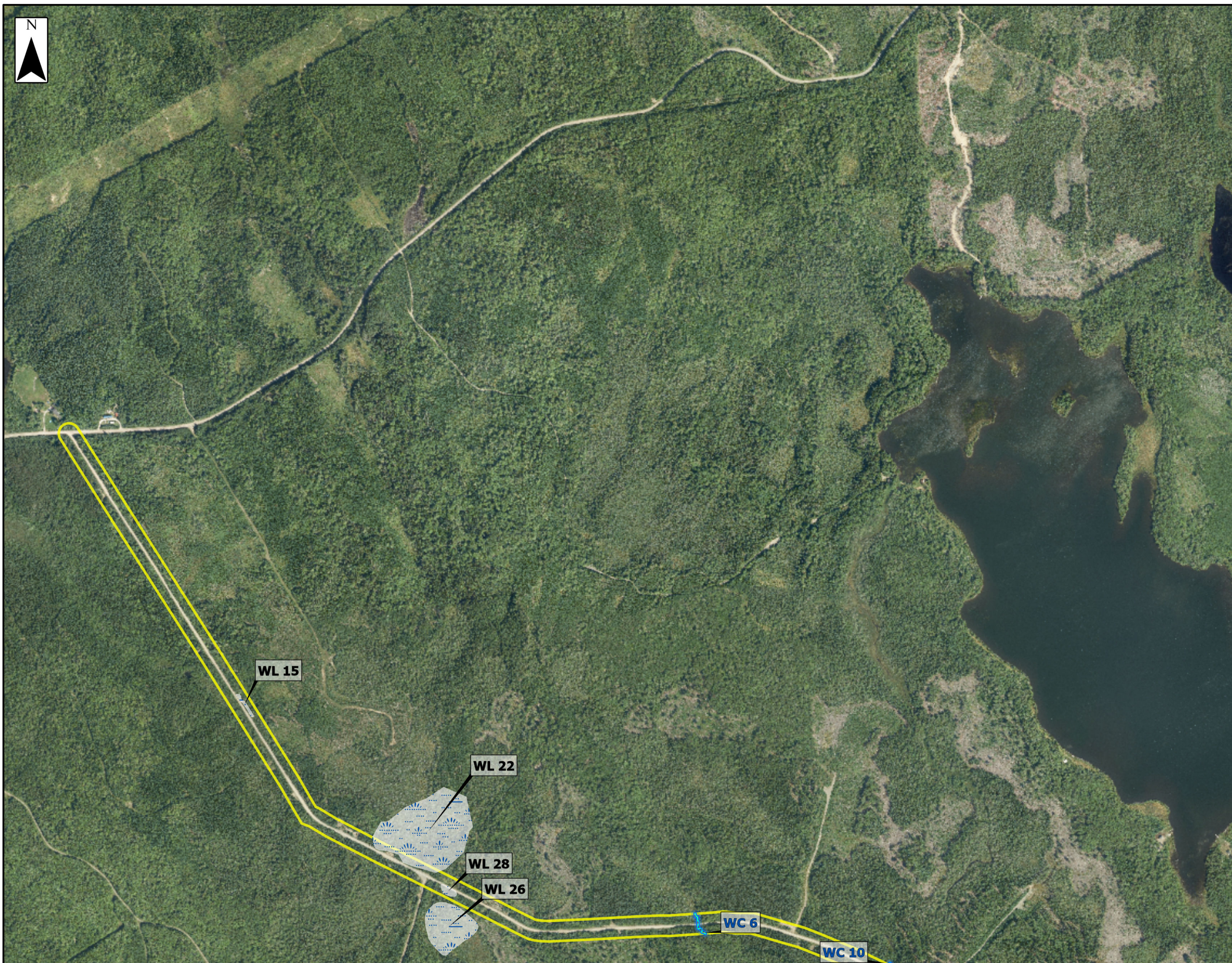
Overview of Assessment Area Observations

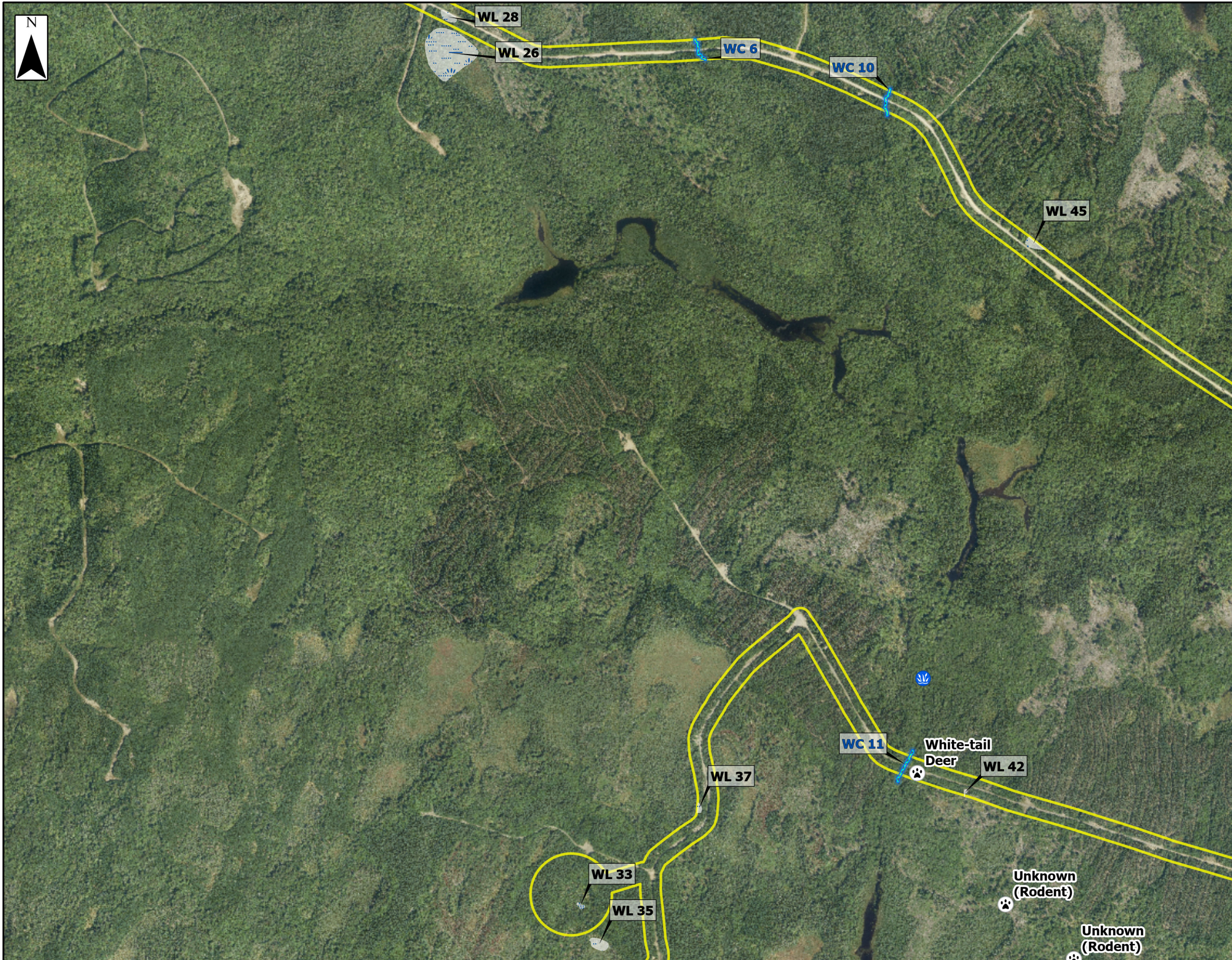
- Assessment Area 
- Field Assessed Watercourse (WC) 
- Field Assessed Wetland (WL) 



Coordinate System: NAD83 UTM Zone 20N
Sources: Esri Basemaps, GeoNOVA, SNSIS, NRCan, NSNRR, ACCDC, IBA Canada

Date:	Jan 2023	Project #:	21-7890
Scale:	1:9,000	Drawing #:	7.12A
Drawn By:	P. Opra		
Checked By:	M. Savelle		

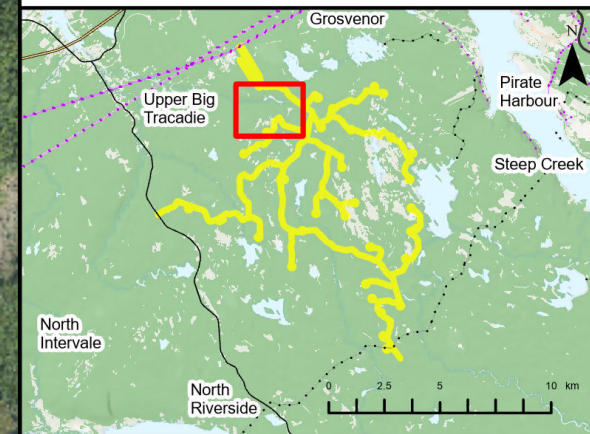
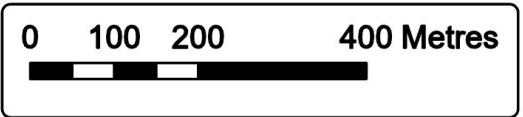




Goose Harbour Lake Wind Farm Project

Overview of Assessment Area Observations

- Assessment Area
- Blue Felt Lichen
- Winter Tracking
- Field Assessed Watercourse (WC)
- Field Assessed Wetland (WL)



Coordinate System: NAD83 UTM Zone 20N Sources: Esri Basemaps, GeoNOVA, SNSIS, NRCan, NSNRR, ACCDG, IBA Canada

Date: Jan 2023	Project #: 21-7890
Scale: 1:9,000	Drawing #:
Drawn By: P. Opra	7.12B
Checked By: M. Savelle	

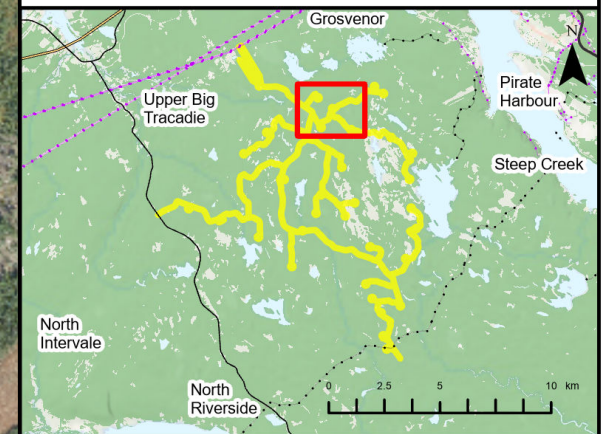
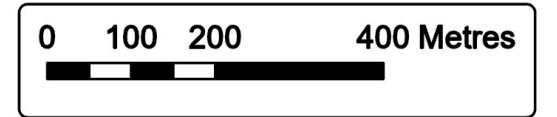




Goose Harbour Lake Wind Farm Project

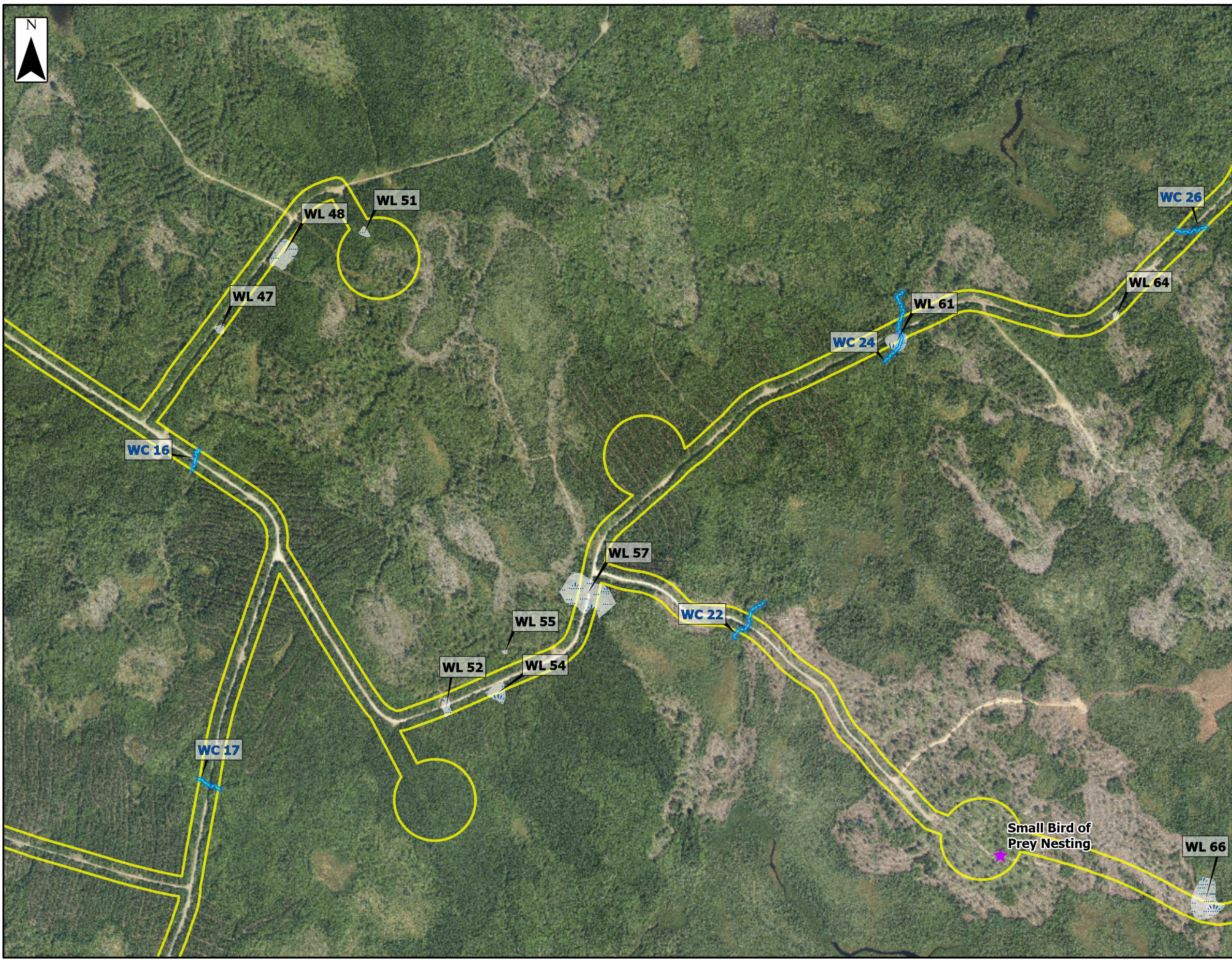
Overview of Assessment Area Observations

- Assessment Area 
- Habitat/Species of Note 
- Field Assessed Watercourse (WC) 
- Field Assessed Wetland (WL) 



Coordinate System: NAD83 UTM Zone 20N
Sources: Esri Basemaps, GeoNOVA, SNSIS, NRCan, NSNRR, ACCDC, IBA Canada

Date:	Jan 2023	Project #:	21-7890
Scale:	1:9,000	Drawing #:	7.12C
Drawn By:	P. Opra		
Checked By:	M. Savelle		



WL 48
WL 51
WL 47

WC 26
WL 64

WC 24
WL 61

WC 16

WL 57

WC 22

WL 55

WL 52

WL 54

WC 17

Small Bird of
Prey Nesting

WL 66