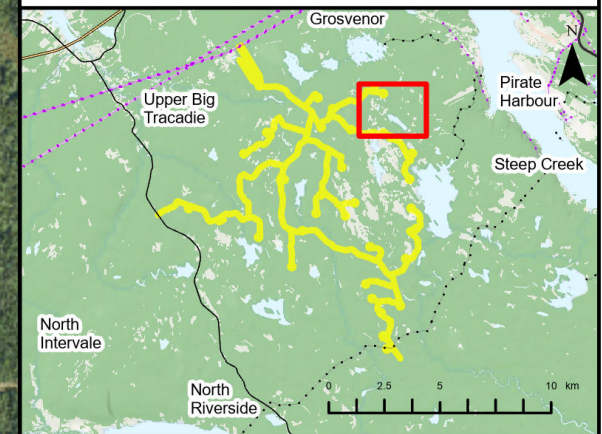
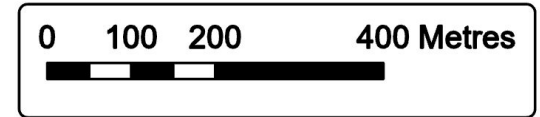




# Goose Harbour Lake Wind Farm Project

Overview of Assessment Area Observations

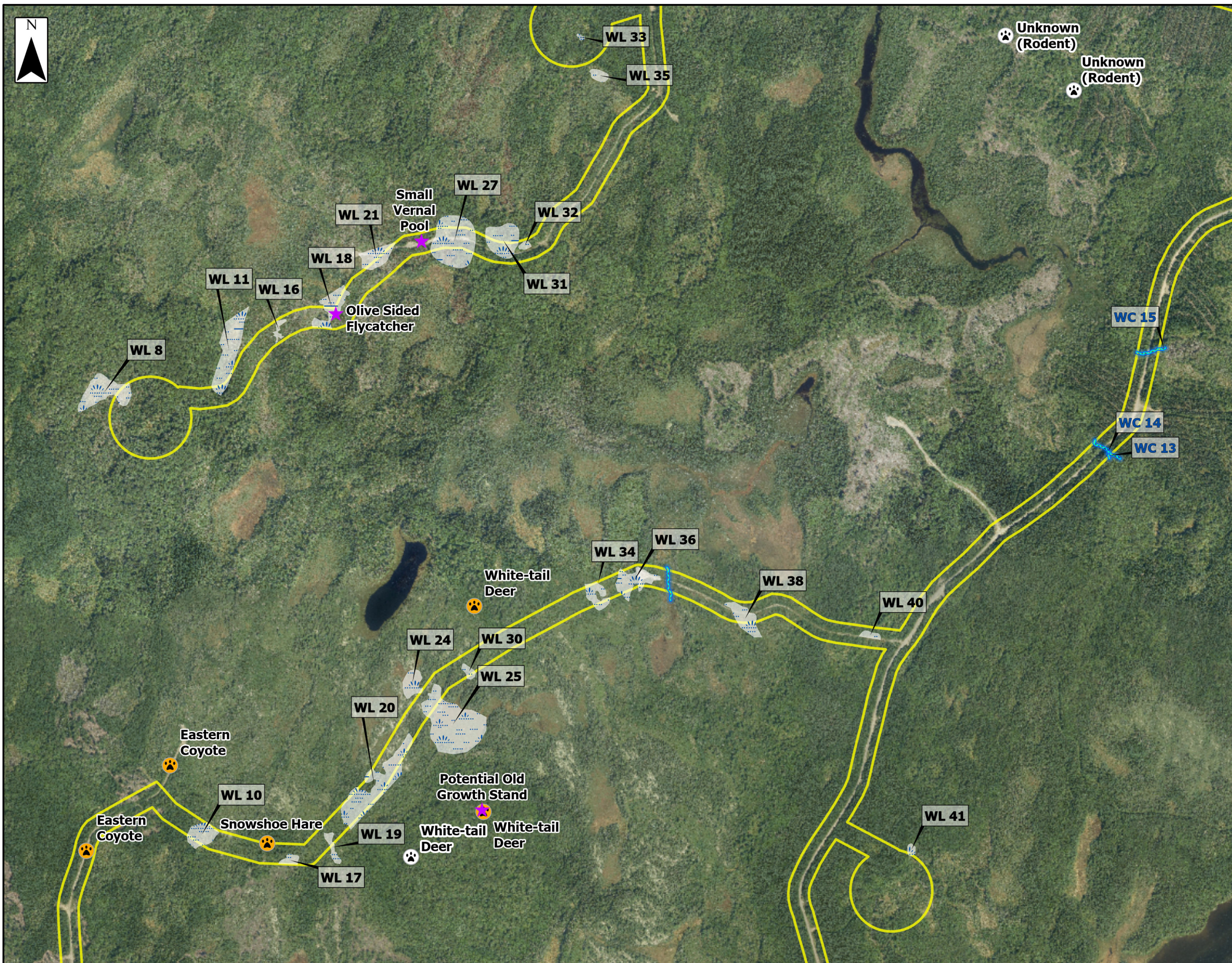
- Assessment Area
- Field Assessed Watercourse (WC)
- Field Assessed Wetland (WL)



Coordinate System: NAD83 UTM Zone 20N Sources: Esri Basemaps, GeoNOVA, SNSIS, NRCan, NSNRR, ACCDC, IBA Canada

Date: Jan 2023	Project #: 21-7890
Scale: 1:9,000	Drawing #: <b>7.12D</b>
Drawn By: P. Opra	
Checked By: M. Savelle	

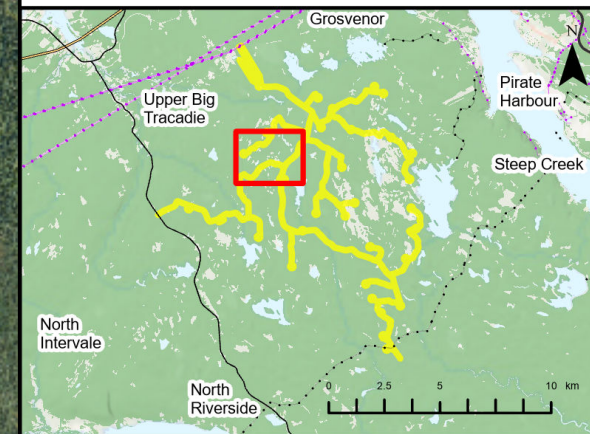
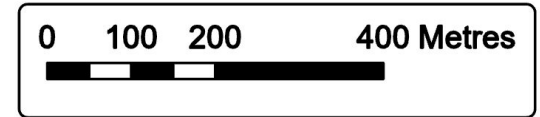




# Goose Harbour Lake Wind Farm Project

Overview of Assessment Area Observations

- Assessment Area
- Habitat/Species of Note
- Spring Wildlife/Pellet Survey Pt.
- Winter Tracking
- Field Assessed Watercourse (WC)
- Field Assessed Wetland (WL)

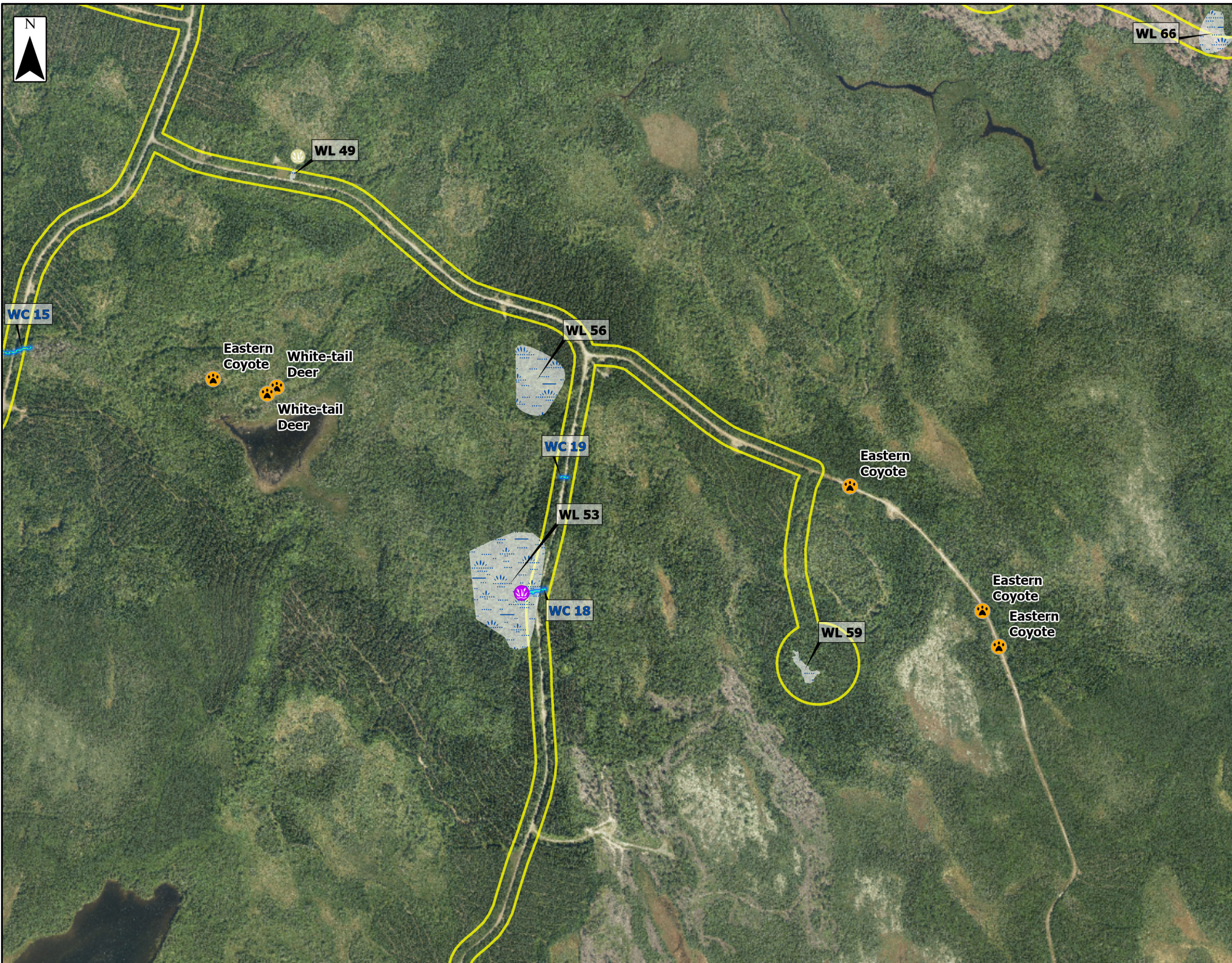


Coordinate System: NAD83 UTM Zone 20N Sources: Esri Basemaps, GeoNOVA, SNSIS, NRCan, NSNRR, ACCDC, IBA Canada

Date:	Jan 2023
Scale:	1:9,000
Drawn By:	P. Opra
Checked By:	M. Savelle

Project #:	21-7890
Drawing #:	<b>7.12E</b>

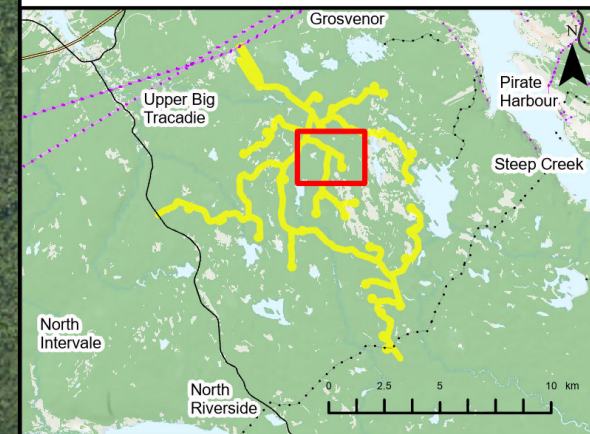
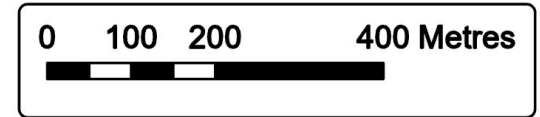




# Goose Harbour Lake Wind Farm Project

Overview of Assessment Area Observations

- Assessment Area
- Spring Wildlife/Pellet Survey Pt.
- Purple Fringed Orchid
- Frosted Glass-Whiskers Lichen
- Field Assessed Watercourse (WC)
- Field Assessed Wetland (WL)



Coordinate System: NAD83 UTM Zone 20N Sources: Esri Basemaps, GeoNOVA, SNSIS, NRCan, NSNRR, ACCDC, IBA Canada

Date: Jan 2023	Project #: 21-7890
Scale: 1:9,000	Drawing #: <b>7.12F</b>
Drawn By: P. Opra	
Checked By: M. Savelle	

