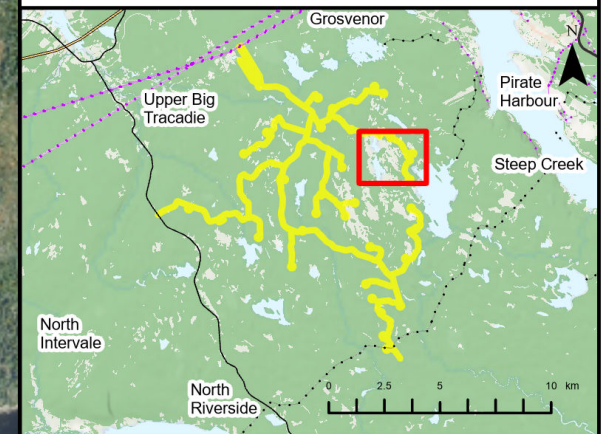
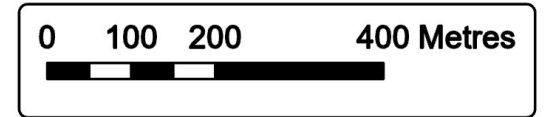


Goose Harbour Lake Wind Farm Project

Overview of Assessment Area Observations

- Assessment Area
- Blue Felt Lichen (Proponent Identified)
- Field Assessed Watercourse (WC)
- Field Assessed Wetland (WL)



Coordinate System: NAD83 UTM Zone 20N Sources: Esri Basemaps, GeoNOVA, SNSIS, NRCan, NSNRR, ACCDC, IBA Canada


Date: Jan 2023	Project #: 21-7890
Scale: 1:9,000	Drawing #:
Drawn By: P. Opra	7.12G
Checked By: M. Savelle	





Goose Harbour Lake Wind Farm Project

Overview of Assessment Area Observations

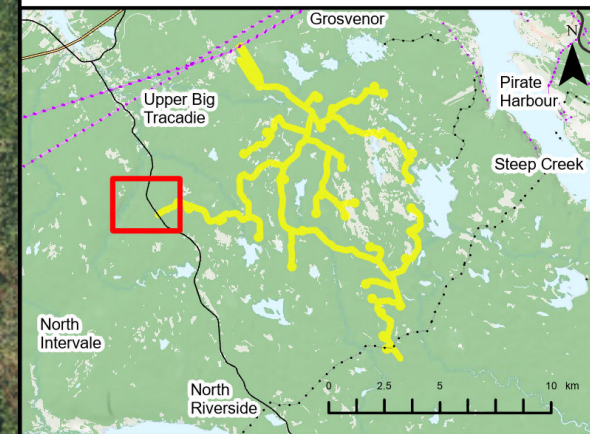
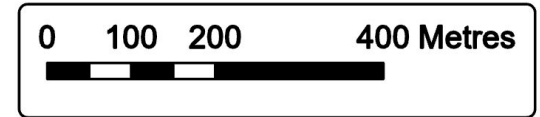
- Assessment Area 
- Spring Wildlife/Pellet Survey Pt. 
- Field Assessed Watercourse (WC) 
- Field Assessed Wetland (WL) 

Snowshoe Hare



WC 1

WL 1



Coordinate System: NAD83 UTM Zone 20N Sources: Esri Basemaps, GeoNOVA, SNSIS, NRCan, NSNRR, ACCDC, IBA Canada

Date:	Jan 2023	Project #:	21-7890
Scale:	1:9,000	Drawing #:	7.12H
Drawn By:	P. Opra		
Checked By:	M. Savelle		








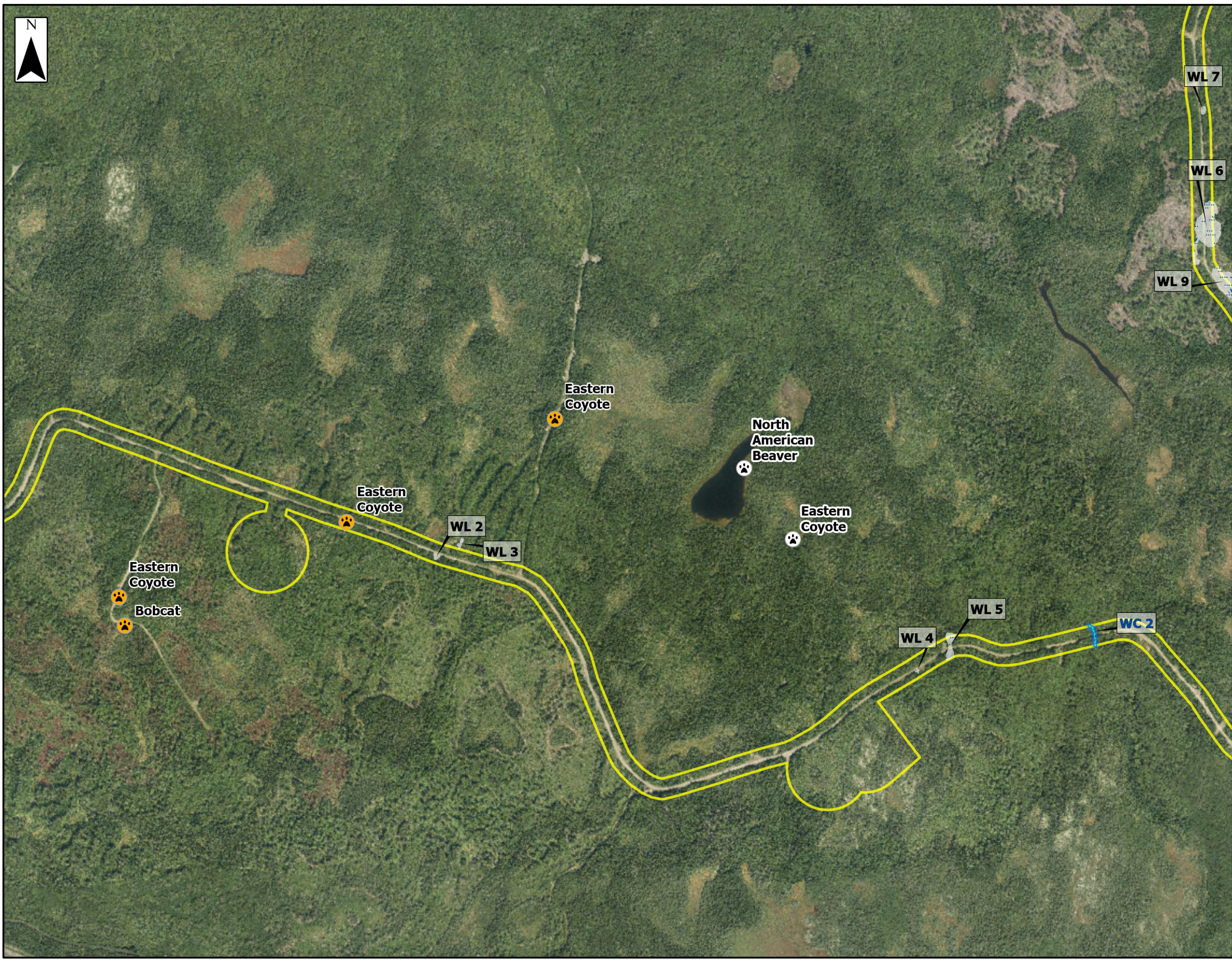
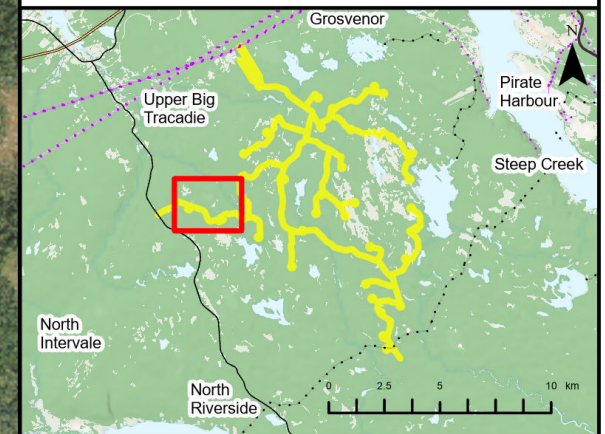
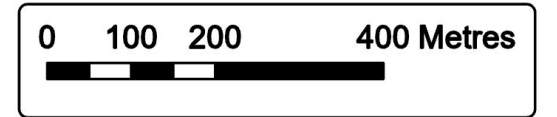
Engineering - Surveying - Environmental
Bedford - Antigonish - Moncton - St. John's



Goose Harbour Lake Wind Farm Project

Overview of Assessment Area Observations

- Assessment Area 
- Spring Wildlife/Pellet Survey Pt. 
- Winter Tracking 
- Field Assessed Watercourse (WC) 
- Field Assessed Wetland (WL) 



Coordinate System: NAD83 UTM Zone 20N Sources: Esri Basemaps, GeoNOVA, SNSIS, NRCan, NSNRR, ACCDC, IBA Canada

Date:	Jan 2023	Project #:	21-7890
Scale:	1:9,000	Drawing #:	7.121
Drawn By:	P. Opra		
Checked By:	M. Savelle		

