



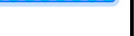

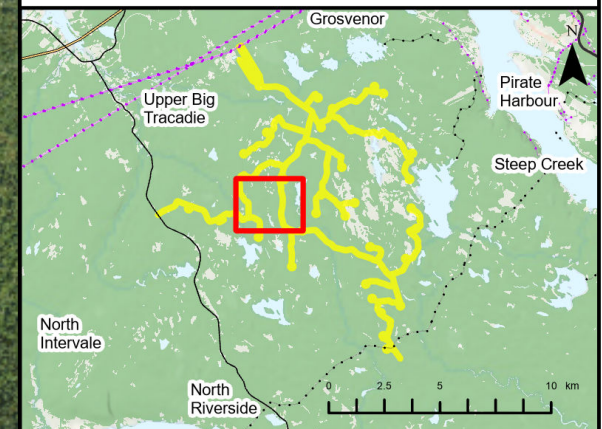


Goose Harbour Lake Wind Farm Project

Overview of Assessment Area Observations

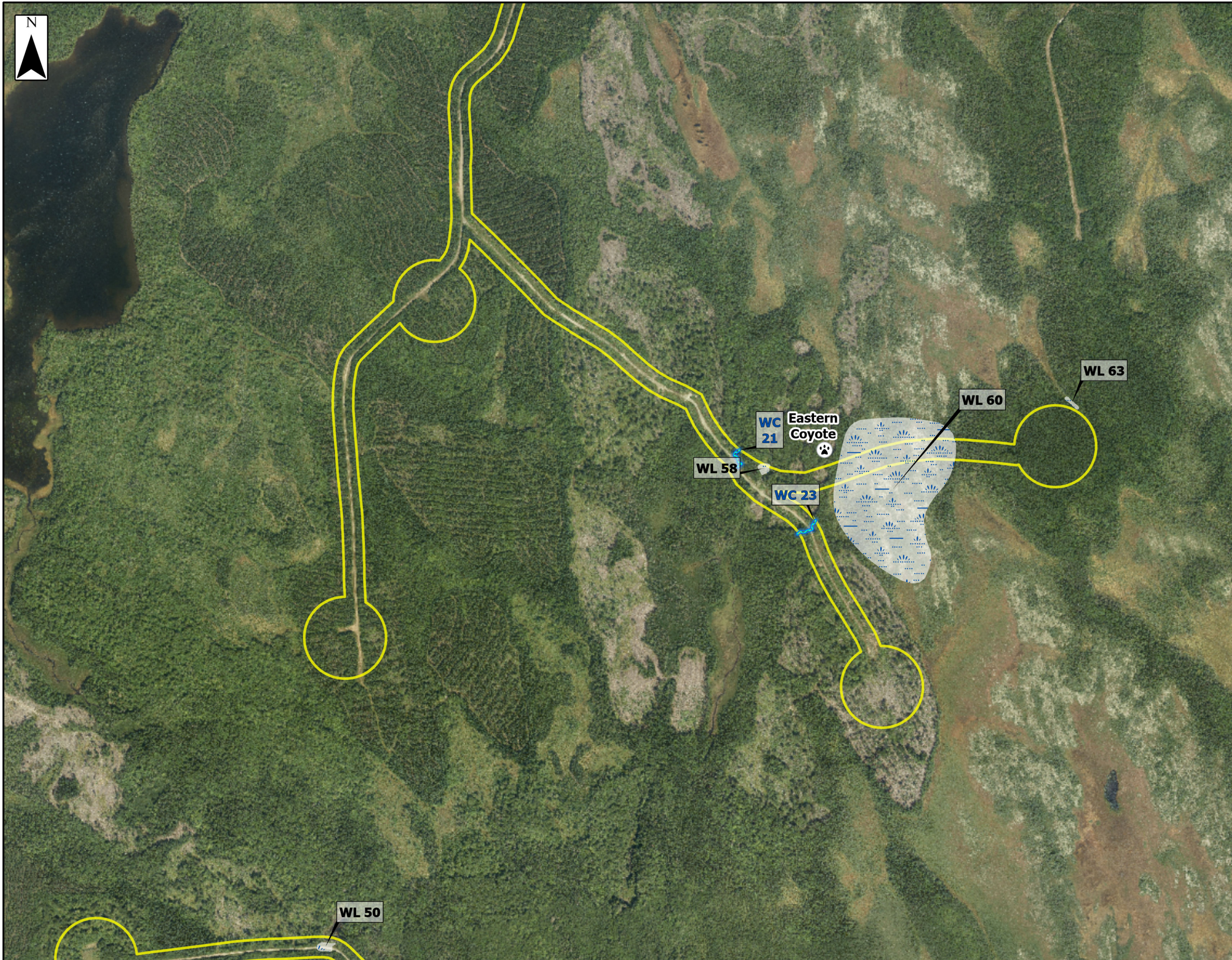
- Assessment Area 
- Spring Wildlife/Pellet Survey Pt. 
- Tree Pelt Lichen 
- Winter Tracking 
- Field Assessed Watercourse (WC) 
- Field Assessed Wetland (WL) 



Coordinate System: NAD83 UTM Zone 20N Sources: Esri Basemaps, GeoNOVA, SNSIS, NRCAN, NSNRR, ACCDG, IBA Canada

Date:	Jan 2023	Project #:	21-7890
Scale:	1:9,000	Drawing #:	7.12J
Drawn By:	P. Opra		
Checked By:	M. Savelle		

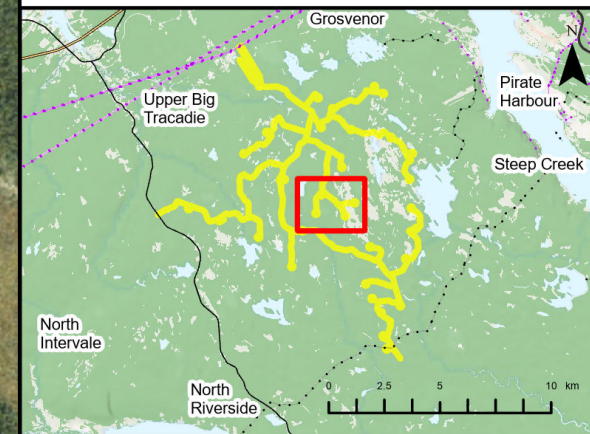
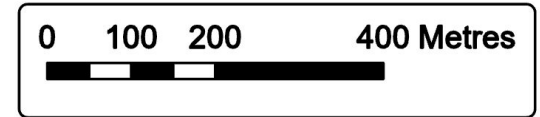




Goose Harbour Lake Wind Farm Project

Overview of Assessment Area Observations

- Assessment Area 
- Winter Tracking 
- Field Assessed Watercourse (WC) 
- Field Assessed Wetland (WL) 



Coordinate System: NAD83 UTM Zone 20N Sources: Esri Basemaps, GeoNOVA, SNSIS, NRCan, NSNRR, ACCDC, IBA Canada




Date:	Jan 2023	Project #:	21-7890
Scale:	1:9,000	Drawing #:	7.12K
Drawn By:	P. Opra		
Checked By:	M. Savelle		

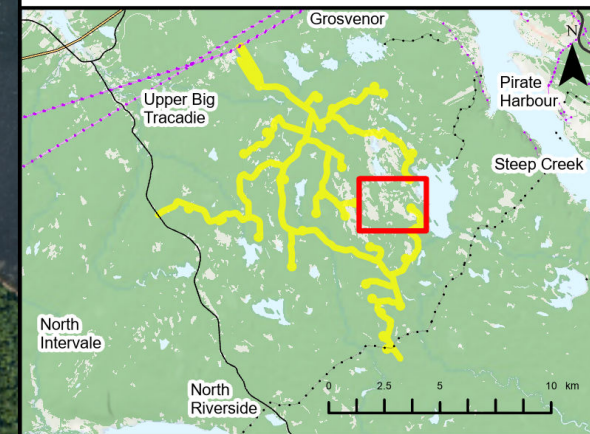
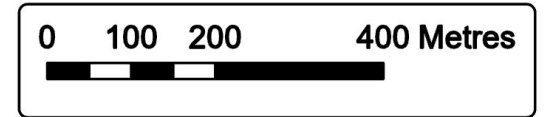




Goose Harbour Lake Wind Farm Project

Overview of Assessment Area Observations

- Assessment Area 
- Spring Wildlife/Pellet Survey Pt. 
- Field Assessed Wetland (WL) 



Coordinate System: NAD83 UTM Zone 20N Sources: Esri Basemaps, GeoNOVA, SNSIS, NRCan, NSNRR, ACCDC, IBA Canada

Date:	Jan 2023	Project #:	21-7890
Scale:	1:9,000	Drawing #:	7.12L
Drawn By:	P. Opra		
Checked By:	M. Savelle		

