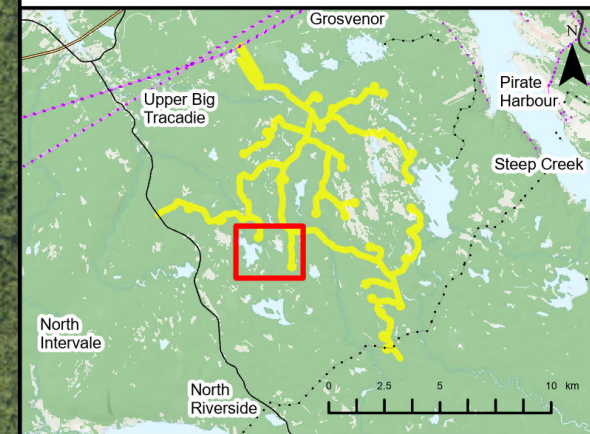
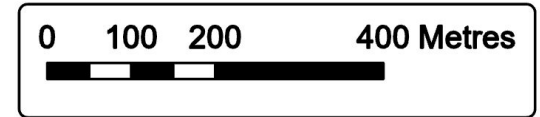




Goose Harbour Lake Wind Farm Project

Overview of Assessment Area Observations

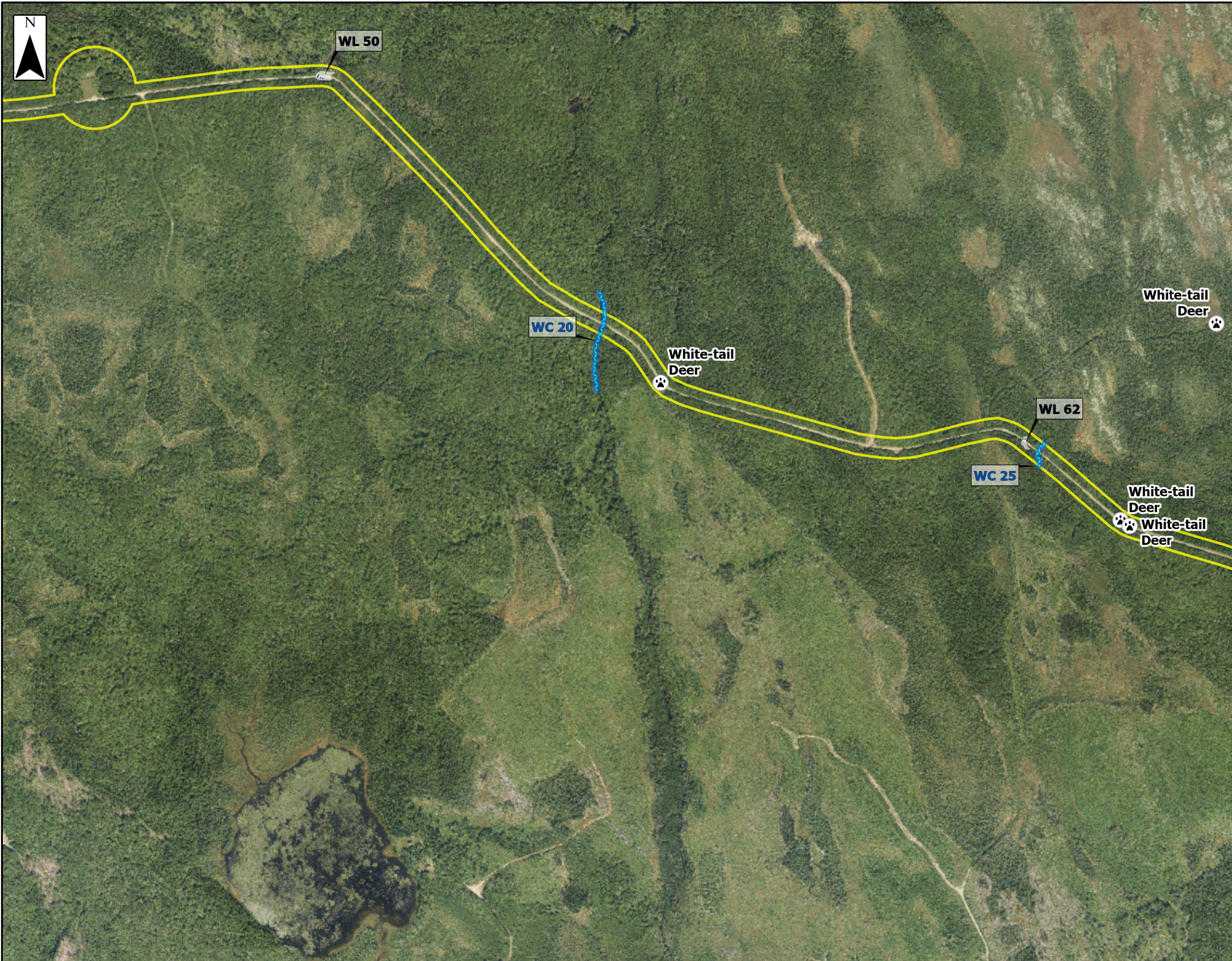
- Assessment Area
- Spring Wildlife/Pellet Survey Pt.
- Yellow Lady-Slipper
- Small Round-Leaved Orchid
- Field Assessed Watercourse (WC)
- Field Assessed Wetland (WL)



Coordinate System: NAD83 UTM Zone 20N Sources: Esri Basemaps, GeoNOVA, SNSIS, NRCan, NSNRR, ACCDC, IBA Canada

Date: Jan 2023	Project #: 21-7890
Scale: 1:9,000	Drawing #:
Drawn By: P. Opra	7.12M
Checked By: M. Savelle	

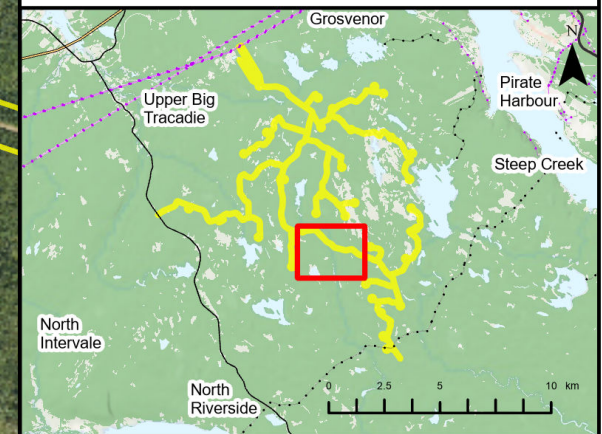
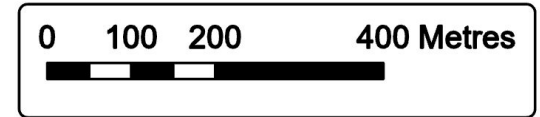




Goose Harbour Lake Wind Farm Project

Overview of Assessment Area Observations

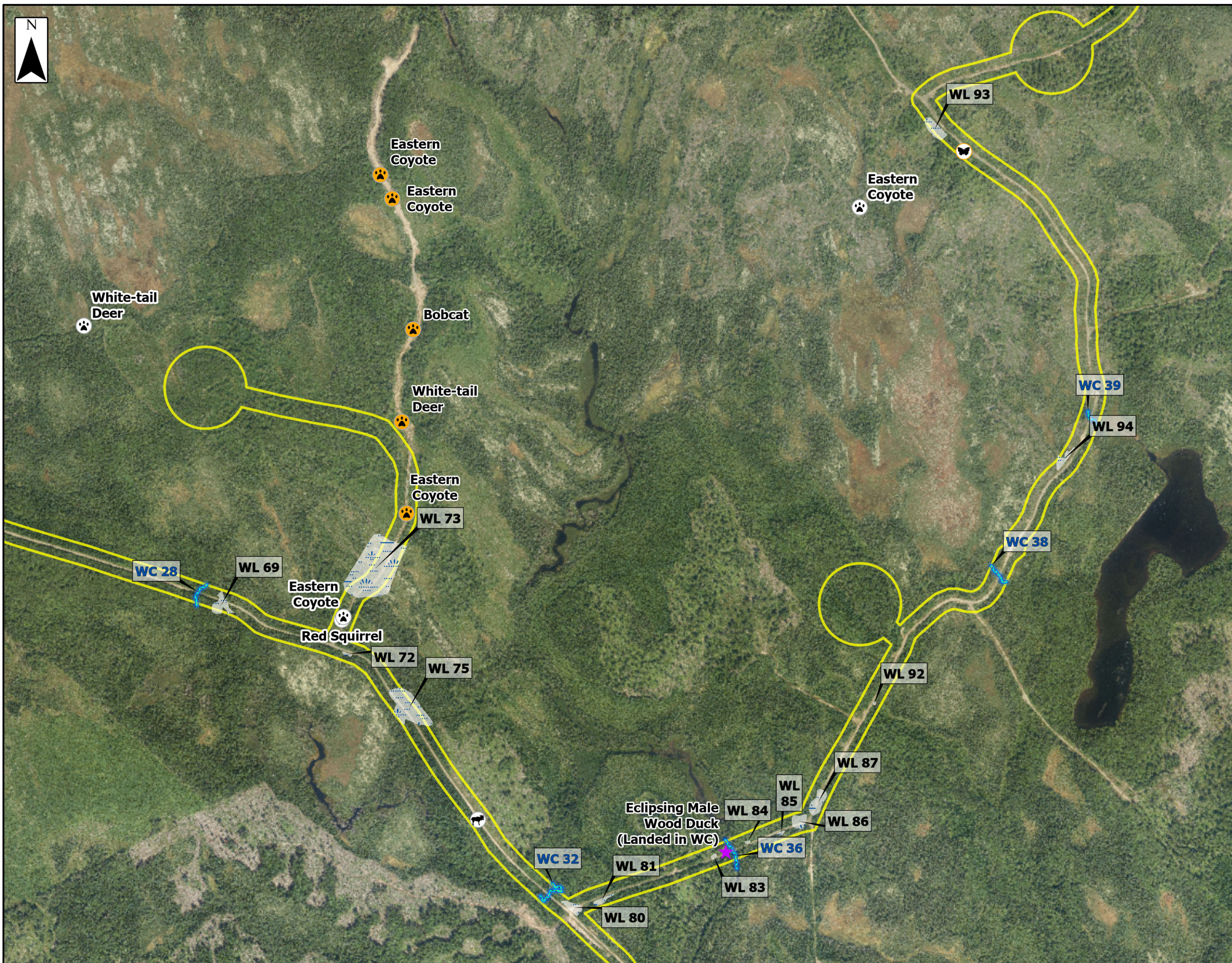
- Assessment Area
- Winter Tracking
- Field Assessed Watercourse (WC)
- Field Assessed Wetland (WL)



Coordinate System: NAD83 UTM Zone 20N Sources: Esri Basemaps, GeoNOVA, SNSIS, NRCan, NSNRR, ACCDC, IBA Canada









Date: Jan 2023	Project #: 21-7890
Scale: 1:9,000	Drawing #: 7.12N
Drawn By: P. Opra	
Checked By: M. Savelle	

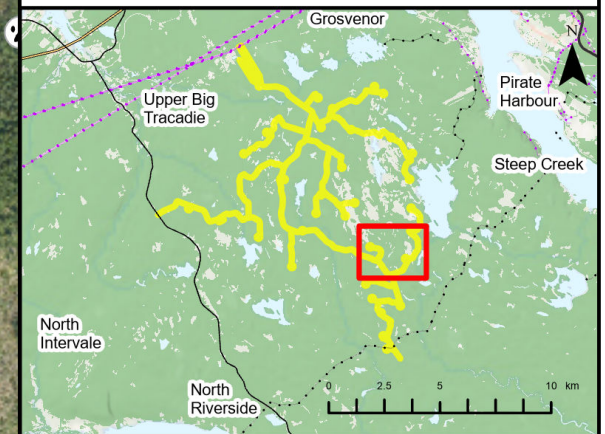
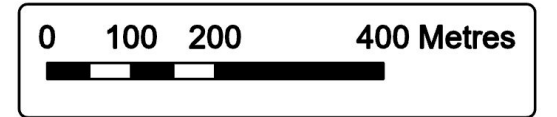




Goose Harbour Lake Wind Farm Project

Overview of Assessment Area Observations

- Assessment Area 
- Habitat/Species of Note 
- Monarch 
- Moose Tracks 
- Spring Wildlife/Pellet Survey Pt. 
- Winter Tracking 
- Field Assessed Watercourse (WC) 
- Field Assessed Wetland (WL) 



Coordinate System: NAD83 UTM Zone 20N Sources: Esri Basemaps, GeoNOVA, SNSIS, NRCan, NSNRR, ACCDG, IBA Canada

Date: Jan 2023

Project #: 21-7890

Scale: 1:9,000

Drawing #:

Drawn By: P. Opra

7.120

Checked By: M. Savelle



Engineering - Surveying - Environmental
Bedford - Antigonish - Moncton - St. John's