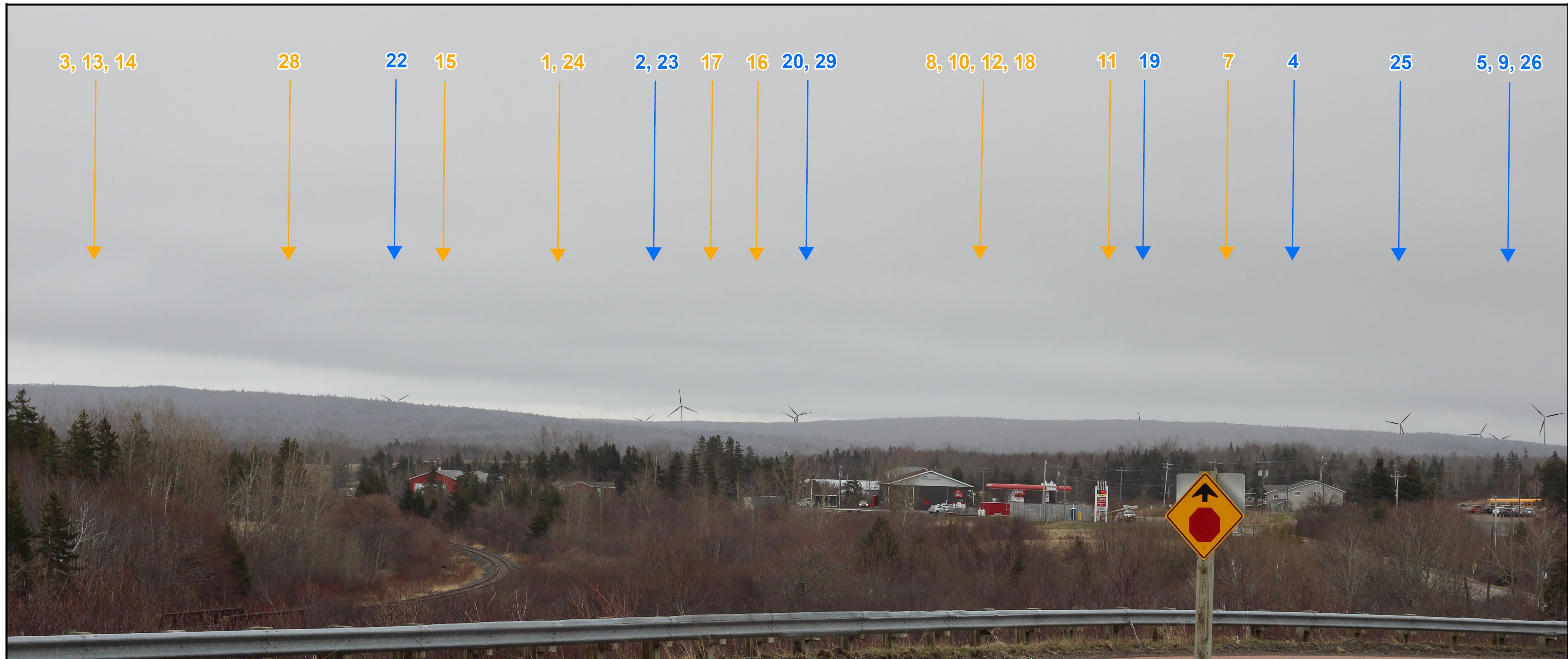


# Visual Impact: Monastery



3, 13, 14

28

22

15

1, 24

2, 23

17

16

20, 29

8, 10, 12, 18

11

19

7

4

25

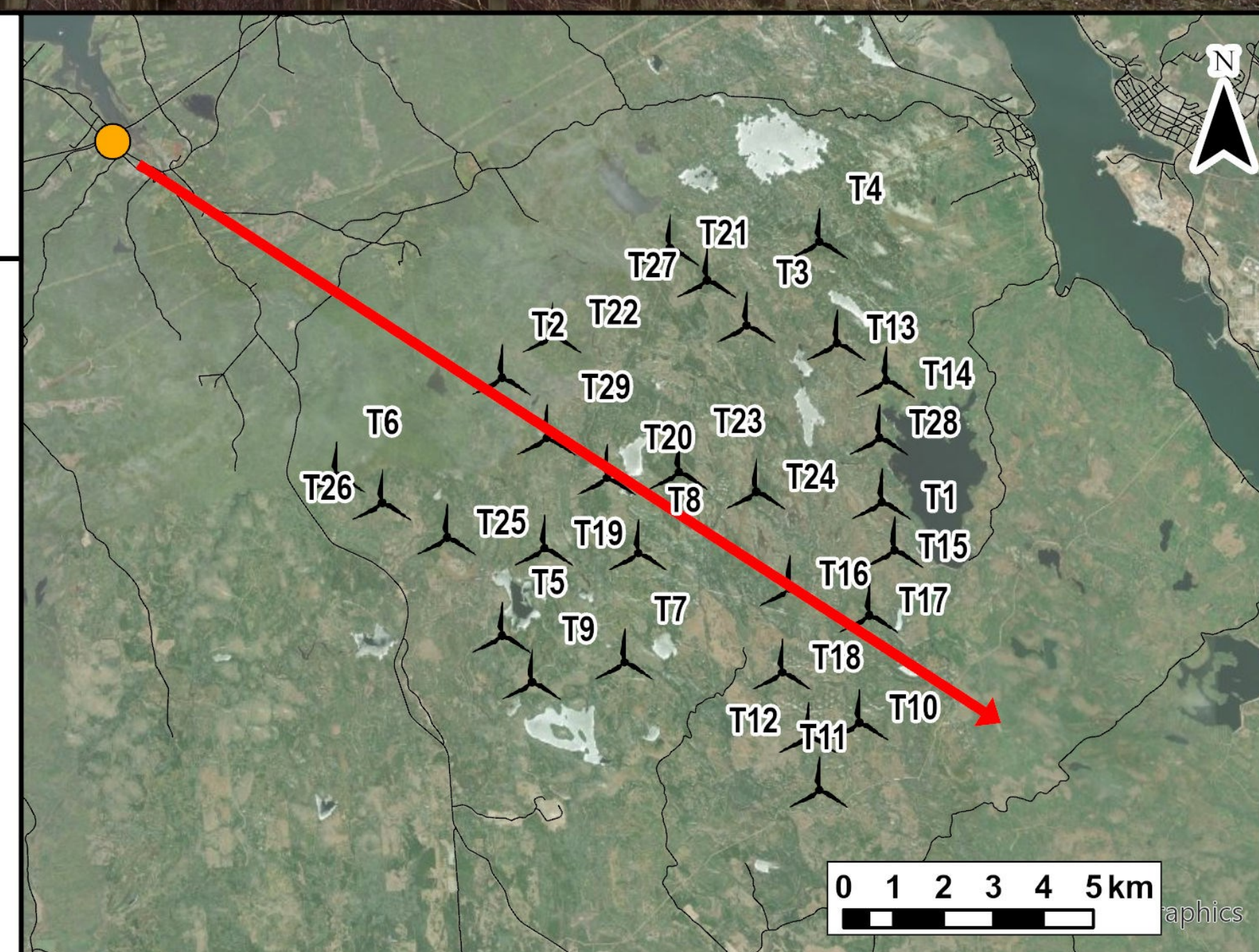
5, 9, 26

**Notes:**

1. Data Sources: GeoNova, Client
2. Basemaps: Esri, DigitalGlobe, GeoEye, Earthstar Geographics, CNES/Airbus DS, USDA, USGS, AeroGRID, IGN, and the GIS User Community
3. Projection: NAD83 UTM Zone 20

**Legend**

- Public Roads
- Proposed Turbine Layout (August 2022)
- Camera Location
- Camera Bearing
- Turbines Visible
- Turbines Hidden



**TECHNICAL INFORMATION**

Photosimulation Location: Monastery  
 View Coordinates: Latitude: 45° 36' 48.99" N  
 Longitude: 61° 37' 34.22" W  
 Easting: 607116m  
 Northing: 5052036m

Direction of View: Southeast, Heading 125°  
 Camera Make/ Model: Canon EOS REBEL T7  
 Lens: 50 mm  
 Image Resolution: 6000 x 4000  
 Weather Conditions: Clear Sky  
 Date of Photo: 2022/04/24  
 Time of Photo: 11:31  
 Photo Credit: Rohan Kariyawansa, Strum Consulting

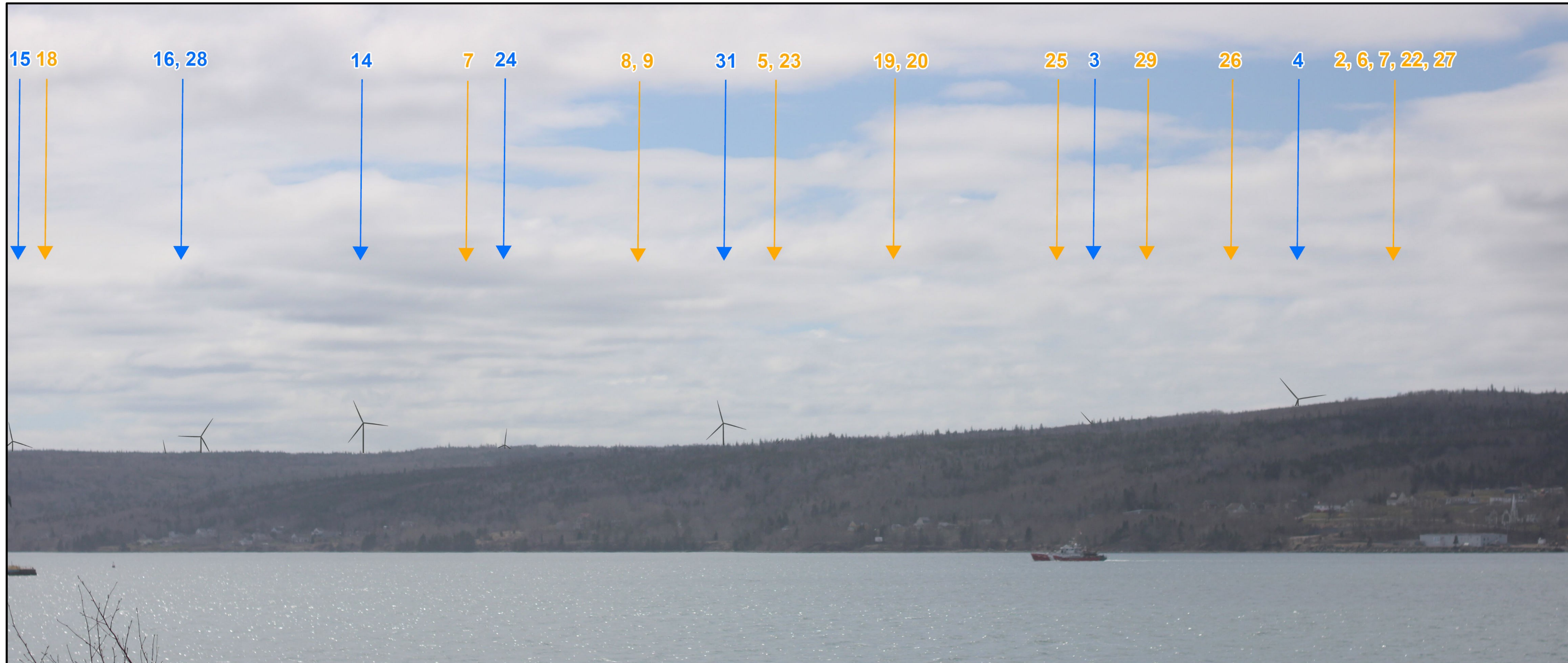
**PHP Wind Project  
 at Long Lake -  
 Photosimulation**



Date: August 2022	Project #: 21-7890
Scale: 1:200,000	Drawing #: <b>1</b>
Drawn By: E. Johnson	
Checked By: M. Savelle	



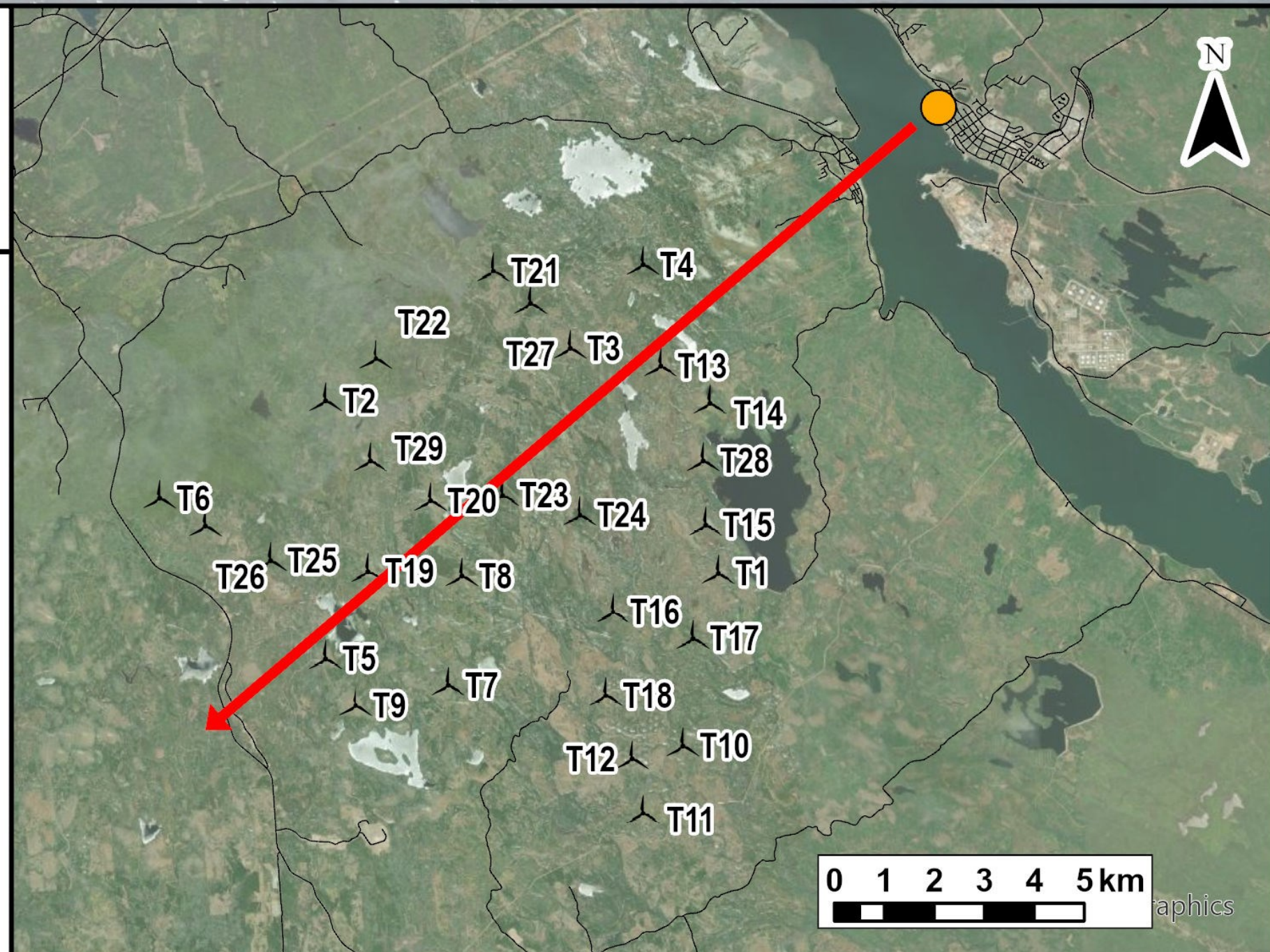
# Visual Impact: Mulgrave



**Notes:**  
 1. Data Sources: GeoNova, Client  
 2. Basemaps: Esri, DigitalGlobe, GeoEye, Earthstar Geographics, CNES/Airbus DS, USDA, USGS, AeroGRID, IGN, and the GIS User Community  
 3. Projection: NAD83 UTM Zone 20

**Legend**

- Public Roads
- Proposed Turbine Layout (August 2022)
- Camera Location
- Camera Bearing
- Turbines Visible
- Turbines Hidden



TECHNICAL INFORMATION	
Photosimulation Location:	Mulgrave
View Coordinates:	Latitude: 45° 37' 15.60" N Longitude: 61° 22' 12.00" W Easting: 627073m Northing: 5053231m
Direction of View:	Southwest, Heading 230°
Camera Make/ Model:	Canon EOS REBEL T7
Lens:	50 mm
Image Resolution:	6000 x 4000
Weather Conditions:	Clear Sky
Date of Photo:	2022/04/24
Time of Photo:	13:43
Photo Credit:	Rohan Kariyawansa, Strum Consulting

<b>PHP Wind Project at Long Lake - Photosimulation</b>	
Date: August 2022	Project #: 21-7890
Scale: 1:200,000	Drawing #: <b>2</b>
Drawn By: E. Johnson	Checked By: M. Savelle



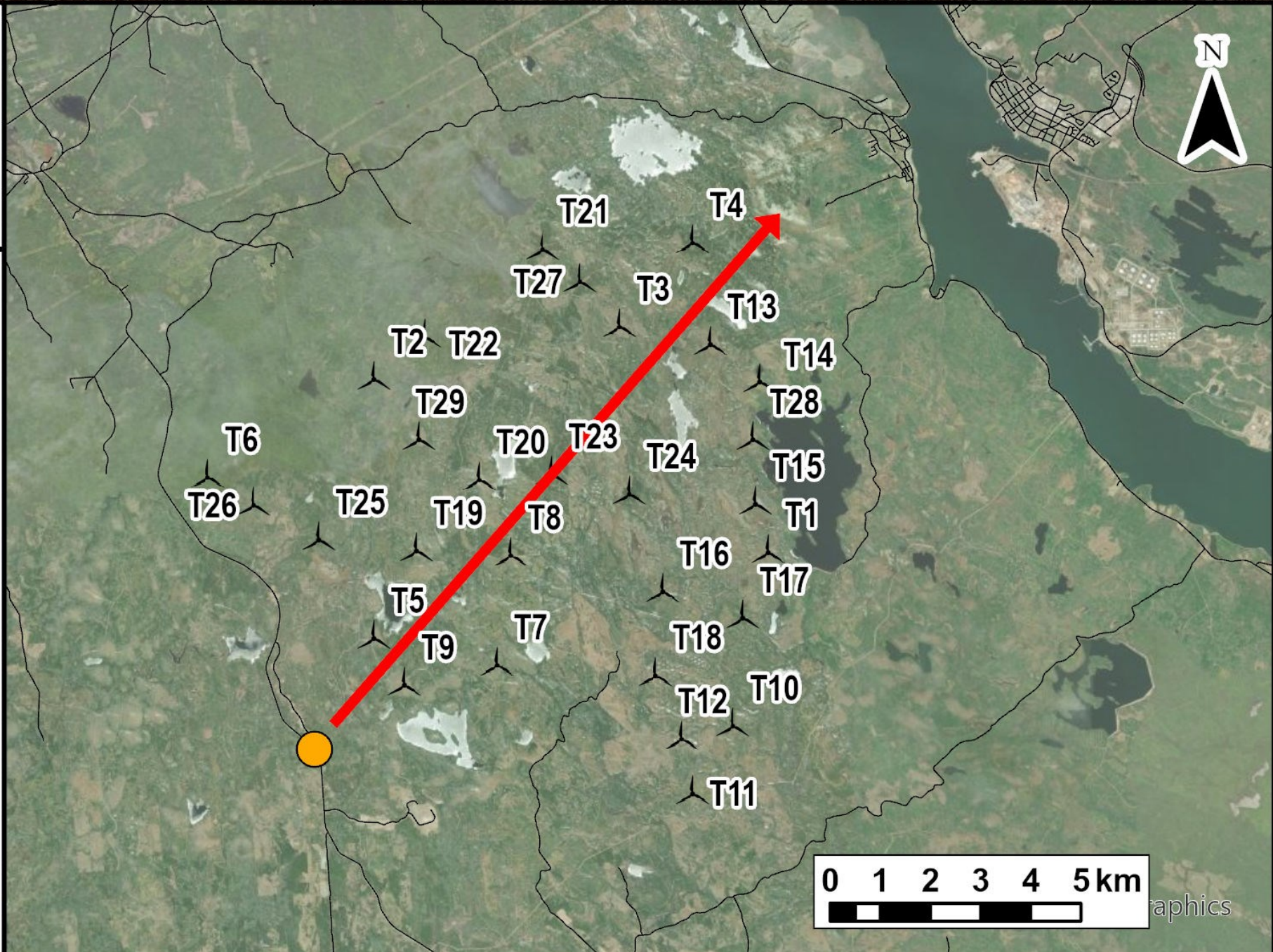
# Visual Impact: Lincolnville



**Notes:**  
 1. Data Sources: GeoNova, Client  
 2. Basemaps: Esri, DigitalGlobe, GeoEye, Earthstar Geographics, CNES/Airbus DS, USDA, USGS, AeroGRID, IGN, and the GIS User Community  
 3. Projection: NAD83 UTM Zone 20

**Legend**

- Public Roads
- ✈ Proposed Turbine Layout (August 2022)
- Camera Location
- ➔ Camera Bearing
- ➔ Turbines Visible
- ➔ Turbines Hidden



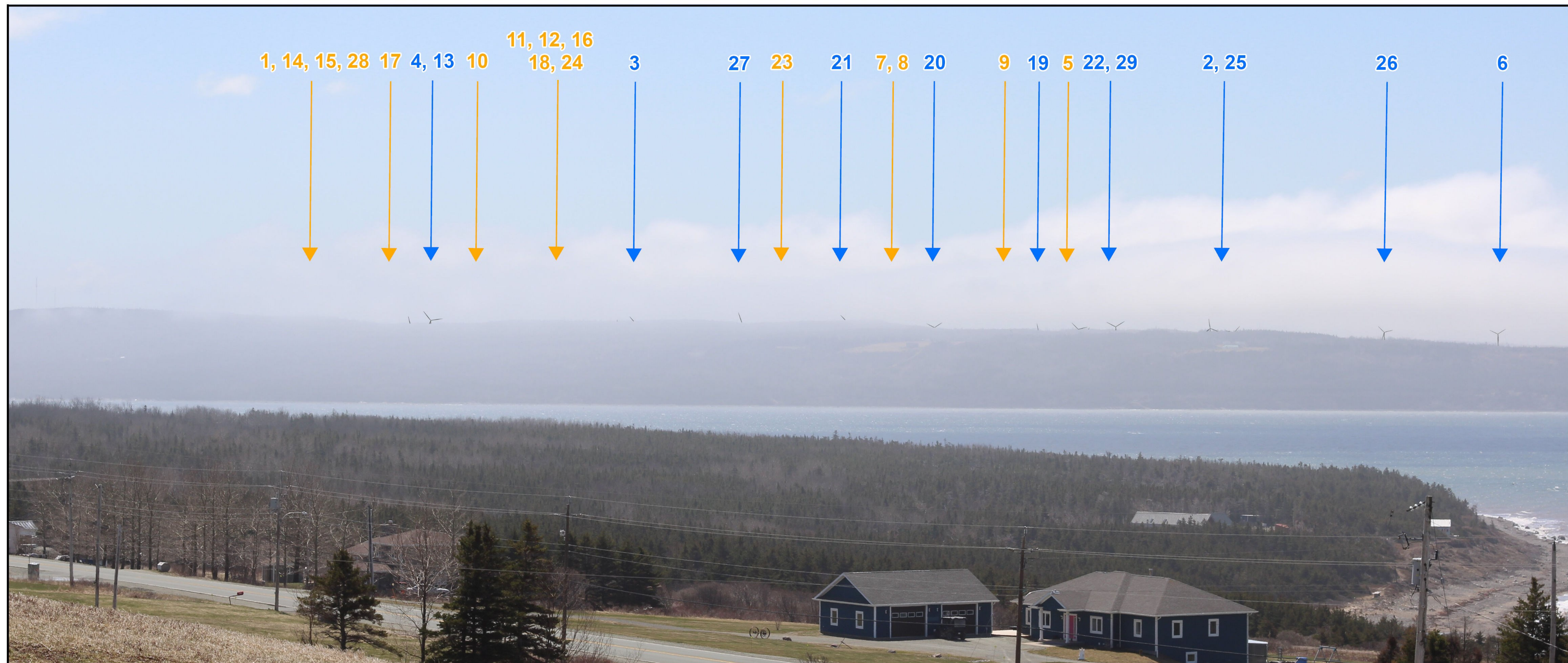
TECHNICAL INFORMATION	
Photosimulation Location:	Lincolnville
View Coordinates:	Latitude: 45° 30' 13.13" N Longitude: 61° 32' 37.99" W Easting: 613754m Northing: 5039933m
Direction of View:	Northeast, Heading 45°
Camera Make/ Model:	Canon EOS REBEL T7
Lens:	50 mm
Image Resolution:	6000 x 4000
Weather Conditions:	Clear Sky
Date of Photo:	2022/04/24
Time of Photo:	11:55
Photo Credit:	Rohan Kariyawansa, Strum Consulting

**PHP Wind Project at Long Lake - Photosimulation**

Date:	August 2022	Project #:	21-7890	
Scale:	1:200,000	Drawing #:	<b>3</b>	
Drawn By:	E. Johnson	Checked By:		M. Savelle



# Visual Impact: Long Point

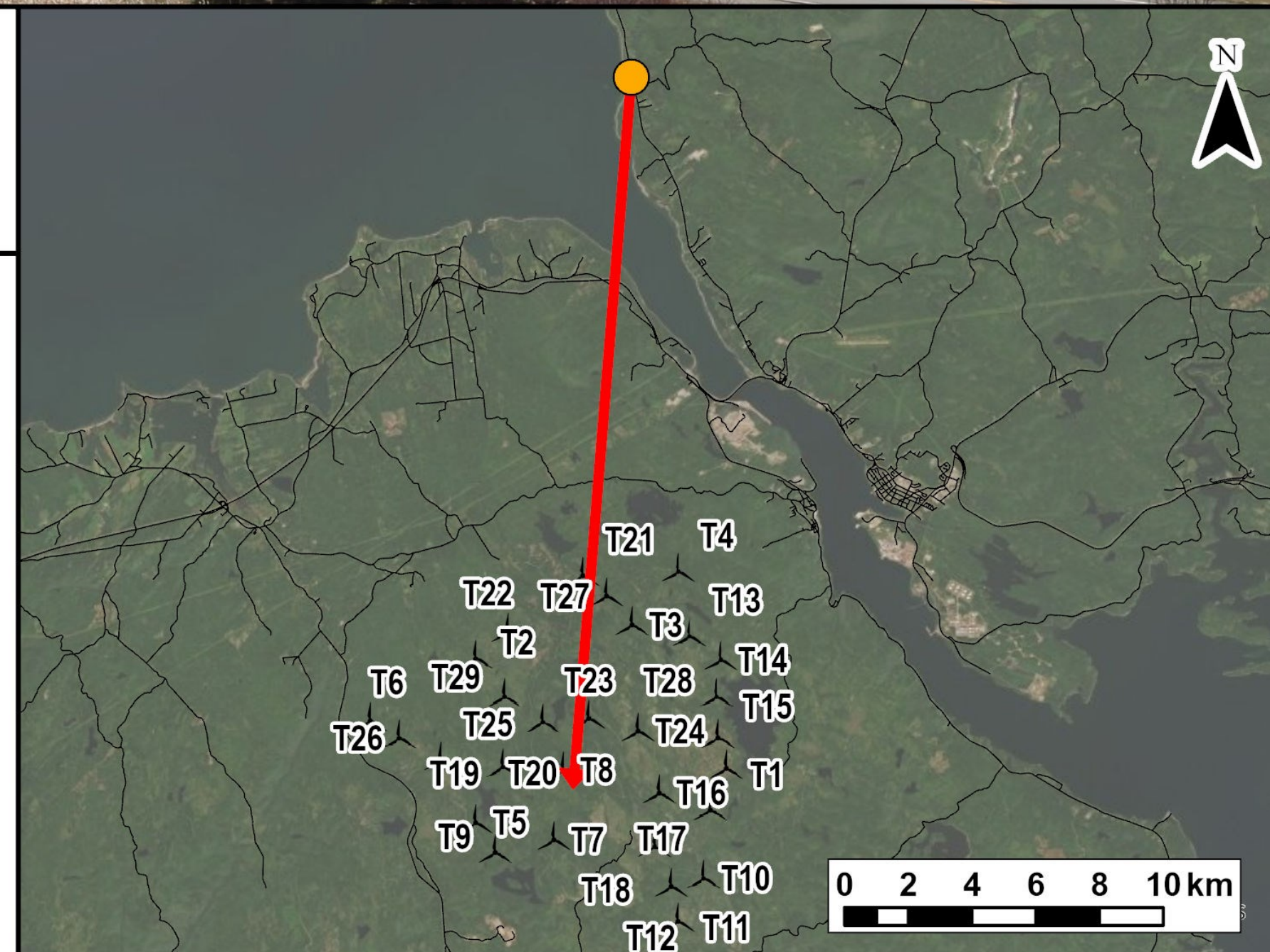


**Notes:**

1. Data Sources: GeoNova, Client
2. Basemaps: Esri, DigitalGlobe, GeoEye, Earthstar Geographics, CNES/Airbus DS, USDA, USGS, AeroGRID, IGN, and the GIS User Community
3. Projection: NAD83 UTM Zone 20

**Legend**

- Public Roads
- Proposed Turbine Layout (August 2022)
- Camera Location
- Camera Bearing
- Turbines Visible
- Turbines Hidden



**TECHNICAL INFORMATION**

Photosimulation Location: Long Point  
 View Coordinates: Latitude: 45° 44' 01.70" N  
 Longitude: 61° 27' 34.10" W  
 Easting: 619857m  
 Northing: 5065626m  
  
 Direction of View: Southwest, Heading 185°  
 Camera Make/ Model: Canon EOS REBEL T7  
 Lens: 50 mm  
 Image Resolution: 6000 x 4000  
 Weather Conditions: Clear Sky  
 Date of Photo: 2022/04/24  
 Time of Photo: 13:06  
 Photo Credit: Rohan Kariyawansa, Strum Consulting

**PHP Wind Project  
at Long Lake -  
Photosimulation**



Date: August 2022	Project #: 21-7890
Scale: 1:315,000	Drawing #: <b>4</b>
Drawn By: E. Johnson	
Checked By: M. Savelle	