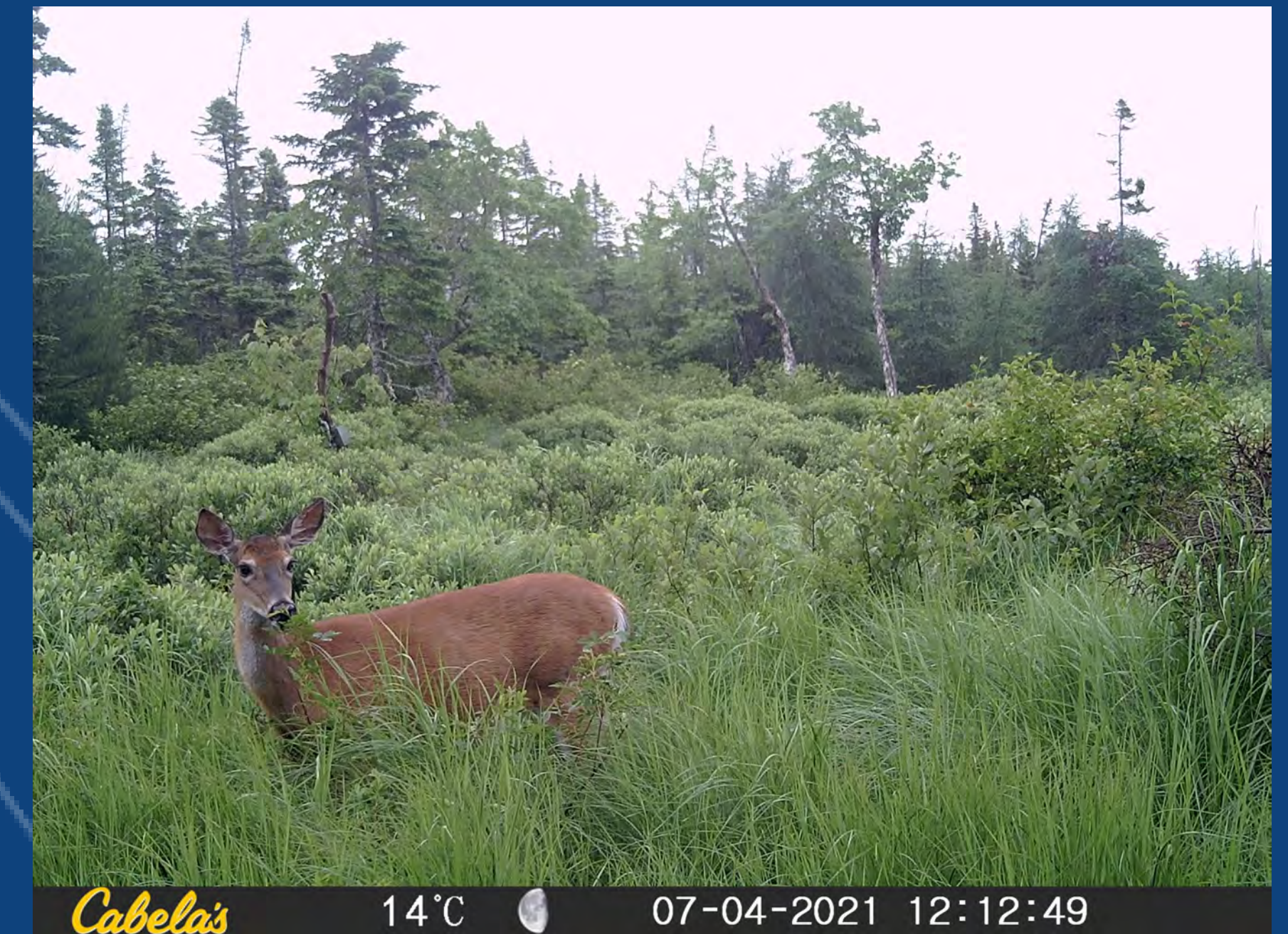


# Field Work

## Field Work—Complete

- Acoustic Bird Monitoring
- Avian Point Count & Hawk Watch Surveys
- Avian Radar Assessment
- Fish and Fish Habitat Assessments
- Herpetofauna Surveys
- Lichens and Rare Flora Surveys
- Spring Pellet Group Inventory
- Ultrasonic Bat Monitoring
- Watercourse Surveys
- Wetland Surveys

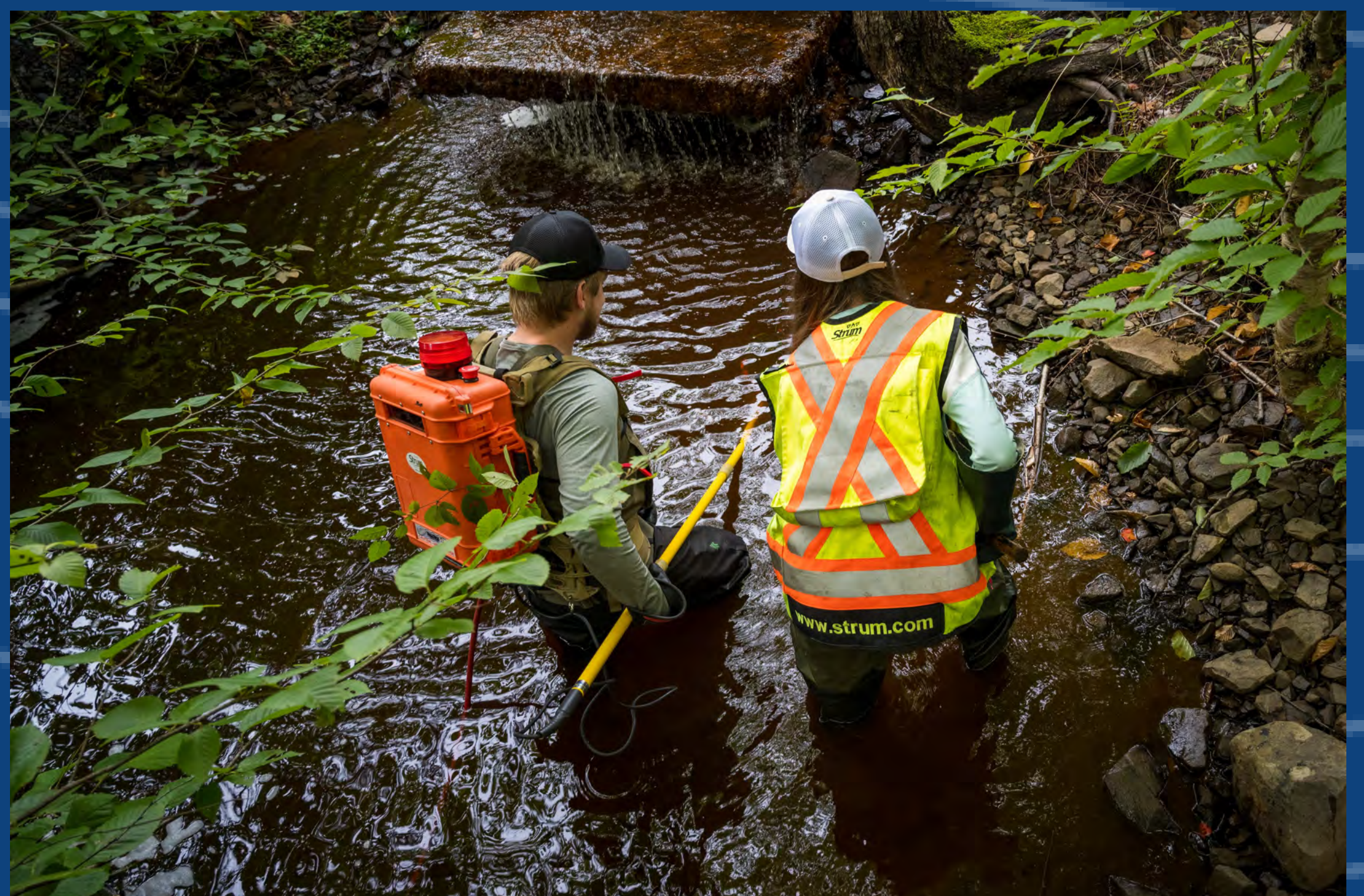


# Environmental Assessment

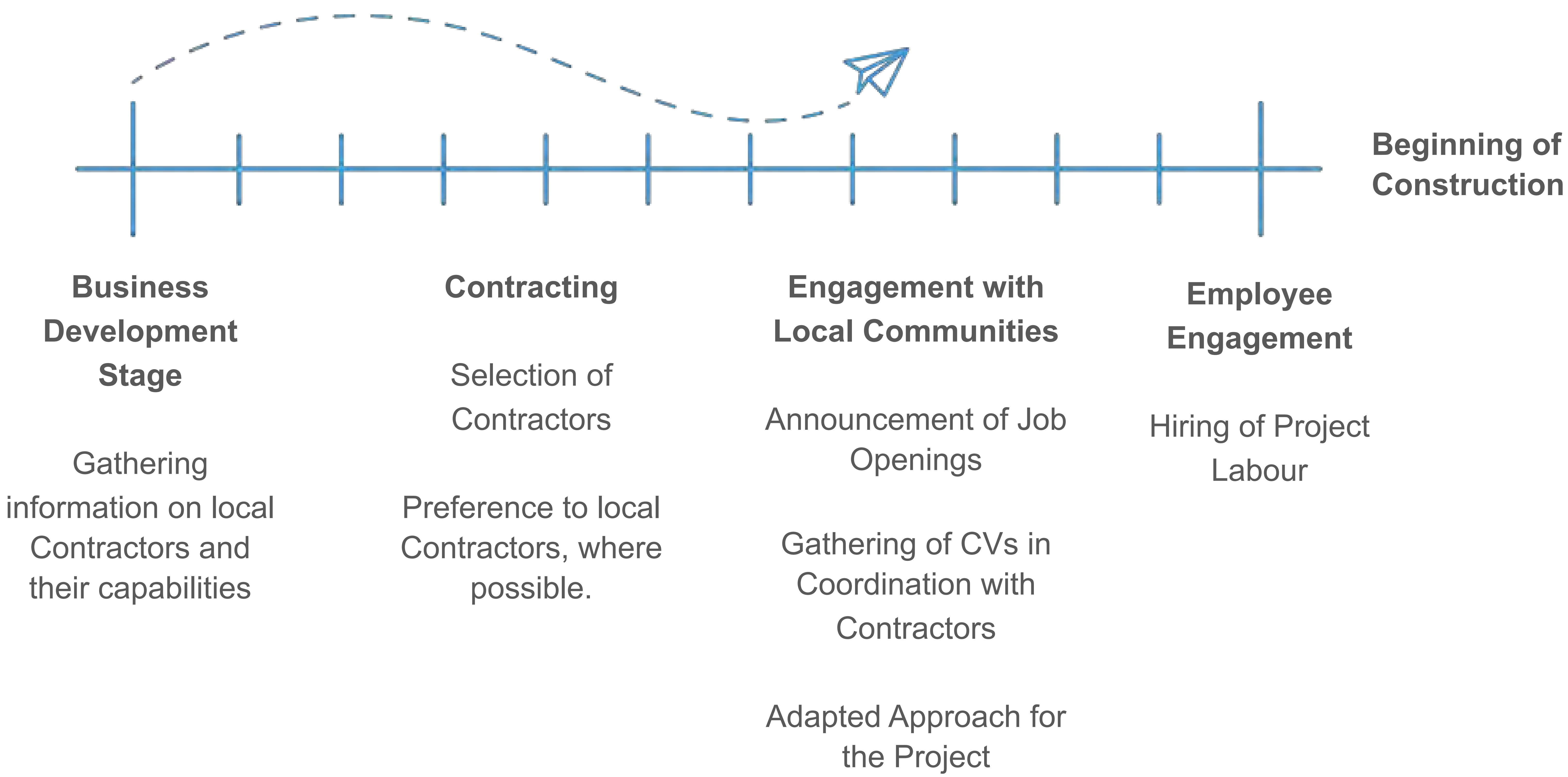
The project is submitting to the province's rigorous Environmental Assessment and Approval process (EA), which includes a comprehensive analysis of the potential environmental impacts of the project.

Strum Consulting is successfully guiding the process and conducting a series of detailed studies including:

- Wetlands and Watercourses Surveys
- Vegetation and Habitat Surveys
- Bird and Bat Surveys
- Moose Surveys
- Sound and Visual Assessments
- Electromagnetic Assessments
- Archaeological Assessments
- Telecommunication Assessments



# General Project Contracting Approach



# About the Turbines

- Capacity Range: 4.5-5.2 MW
- Hub Height Range: 120m-128m
- Maximum Height Range: 195m-200m
- Number of Wind Turbine Generators: approx. 30

