

Harbour Hills Wind Project

Avifauna and Bats LAA



- Study Area
- Avifauna and Bats Local Assessment Area (LAA)
- Transportation**
- Road
- Unpaved Road
- Utilities (Line)**
- Existing Pipeline
- Existing Transmission Lines
- Water Features**
- Mapped Lakes and Rivers



<small>Coordinate System: NAD 1983 UTM Zone 20N</small>	
<small>Sources: Service Nova Scotia, Esri, NASA, NGA, USGS, GeoNOVA, SNSIS, NSNRR, ACCDC, IBA Canada, CNWL, HERE, Garmin, USGS</small>	
Date: 2026-06-11	Project #: 25-11682
Scale: 1:120,000	Drawing #: 10.10
Drawn By: K. Wallace	
Checked By: A. Doane	

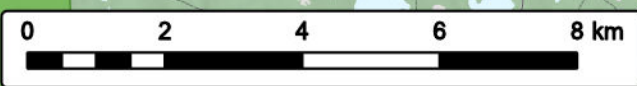
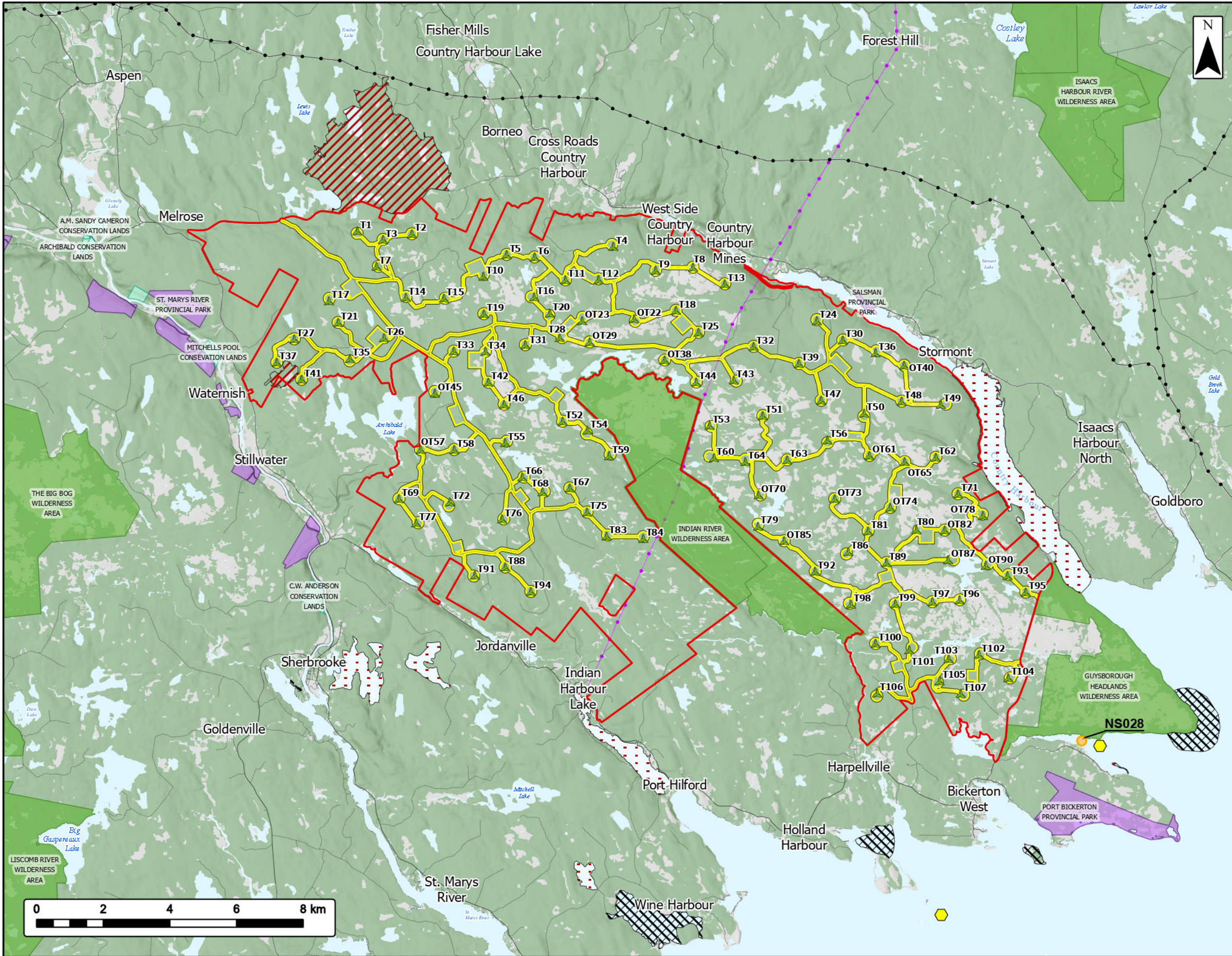


Harbour Hills Wind Project

Avifauna Desktop Review



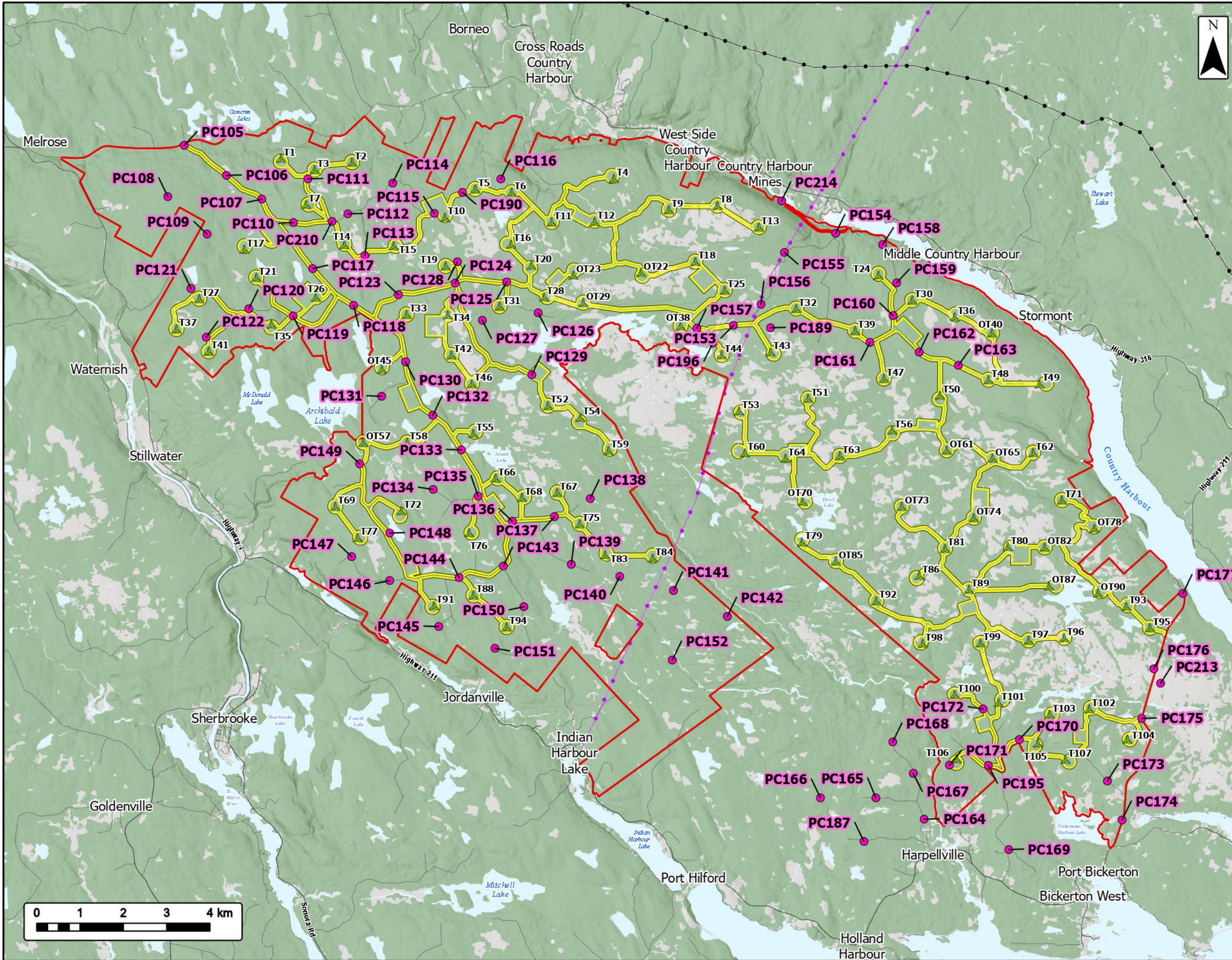
Study Area		Transportation	
Assessment Area		Road	
Proposed Turbine Locations		Unpaved Road	
Atlantic Waterbird Colony		Utilities (Line)	
Provincial Park		Existing Pipeline	
Wilderness Area		Existing Transmission Lines	
Land Trust or Conservation Easement		Water Features	
Important Bird Area (IBA)		Mapped Lakes and Rivers	
Significant Species and Habitats			
Migratory Bird			
Species at Risk			
Species of Concern			



Coordinate System: NAD 1983 UTM Zone 20N
 Sources: Service Nova Scotia, Esri, NASA, NGA, USGS, GeoNOVA, SNSIS, NSNRR, ACCDC, IBA Canada, CNWL, HERE, Garmin, USGS

Date:	2026-06-11	Project #:	25-11682
Scale:	1:110,000	Drawing #:	10.11
Drawn By:	K. Wallace		
Checked By:	A. Doane		





Harbour Hills Wind Project

Avifauna Point Count Surveys

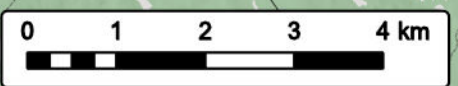


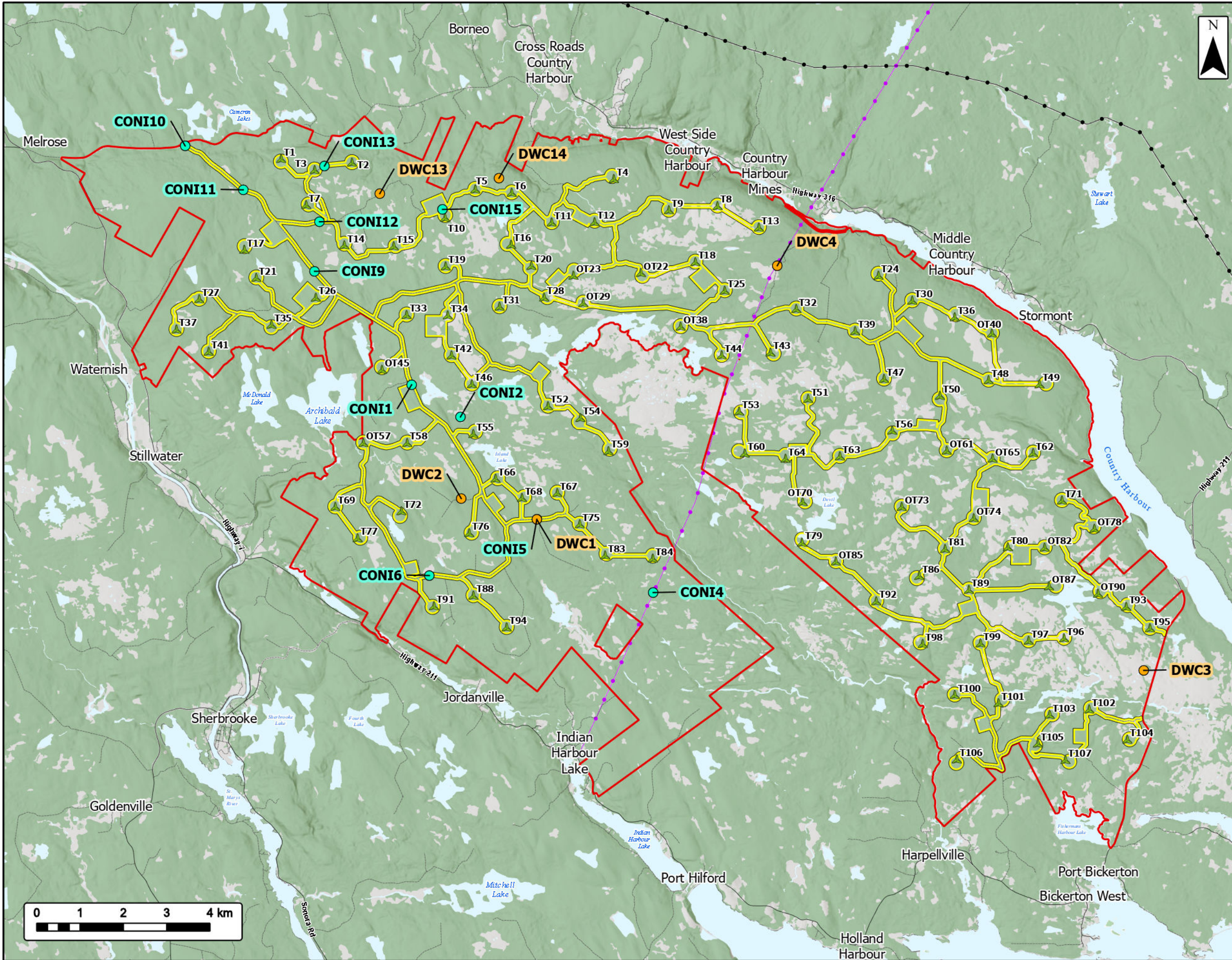
Study Area	
Assessment Area	
Proposed Turbine Locations	
Point Count Location	
Transportation	
Road	
Unpaved Road	
Utilities (Line)	
Existing Pipeline	
Existing Transmission Lines	
Water Features	
Mapped Lakes and Rivers	



Coordinate System: NAD 1983 UTM Zone 20N
 Sources: Service Nova Scotia, Esri, NASA, NGA, USGS, GeoNOVA, SNSIS, NSNRR, ACCDC, IBA Canada, CNWL, HERE, Garmin, USGS

Date:	2026-06-11	Project #:	25-11682
Scale:	1:85,000	Drawing #:	10.12
Drawn By:	K. Wallace		
Checked By:	A. Doane		





Harbour Hills Wind Project

Avifauna Nightjar and Diurnal Watch Count Surveys



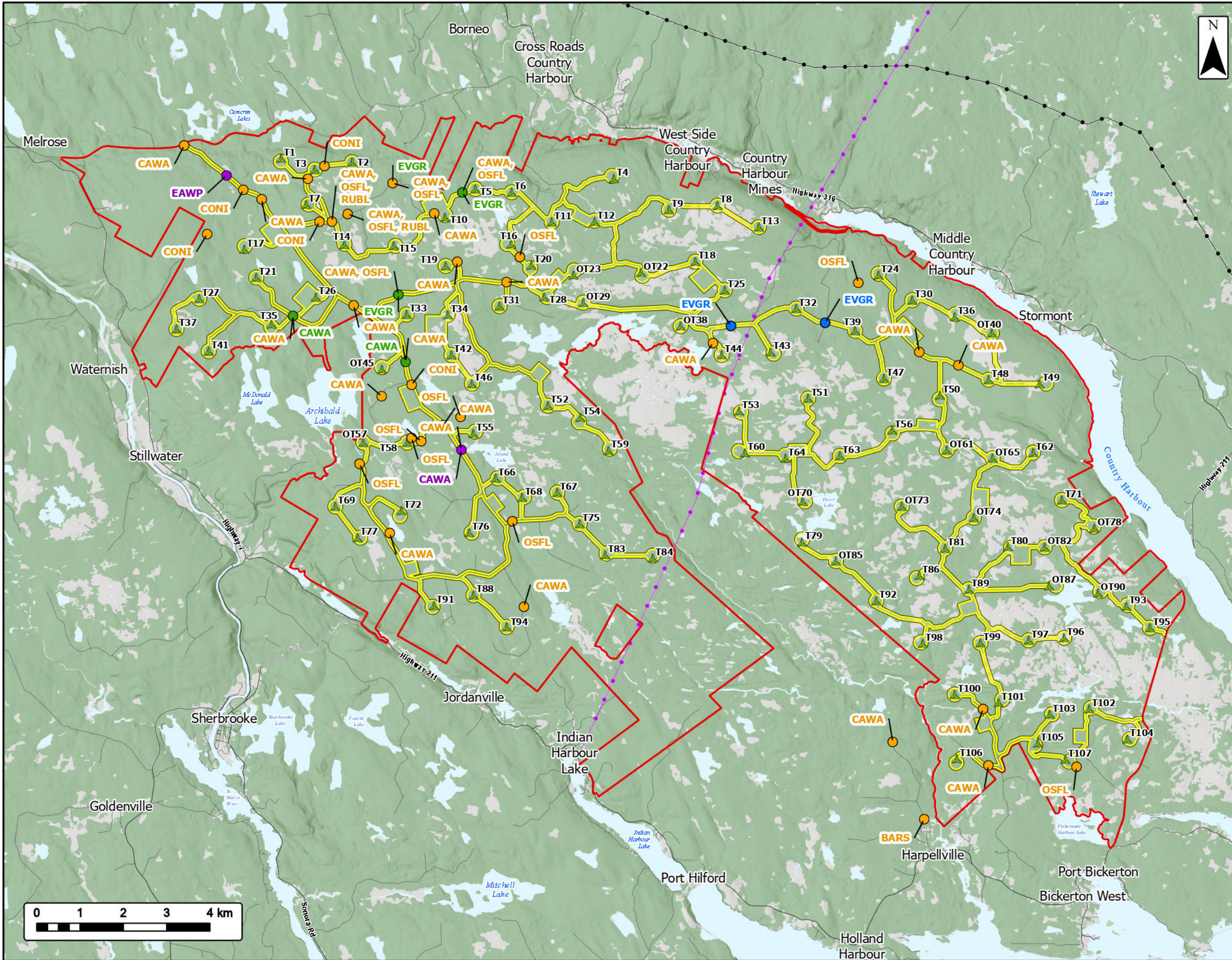
- Study Area
- Assessment Area
- Proposed Turbine Locations
- Diurnal Watch Count Location
- Nightjar Survey Location
- Transportation**
- Road
- Unpaved Road
- Utilities (Line)**
- Existing Pipeline
- Existing Transmission Lines
- Water Features**
- Mapped Lakes and Rivers



Coordinate System: NAD 1983 UTM Zone 20N
 Sources: Service Nova Scotia, Esri, NASA, NGA, USGS, GeoNOVA, SNSIS, NSNRR, ACCDC, IBA Canada, CNWL, HERE, Garmin, USGS

Date: 2026-06-11	Project #: 25-11682
Scale: 1:85,000	Drawing #:
Drawn By: K. Wallace	10.13
Checked By: A. Doane	





Harbour Hills Wind Project

Field Observed Avian SAR Locations



Study Area [Red outline symbol]

Assessment Area [Yellow outline symbol]

Proposed Turbine Locations [Green triangle symbol]

Observed Avian Species at Risk (SAR)

- Breeding Bird Survey [Orange circle symbol]
- Fall Migration Survey [Purple circle symbol]
- Spring Migration Survey [Green circle symbol]
- Winter Bird Survey [Blue circle symbol]

Transportation

- Road [Solid line symbol]
- Unpaved Road [Dashed line symbol]

Utilities (Line)

- Existing Pipeline [Black line with dots symbol]
- Existing Transmission Lines [Purple line with dots symbol]

Water Features

- Mapped Lakes and Rivers [Blue area symbol]

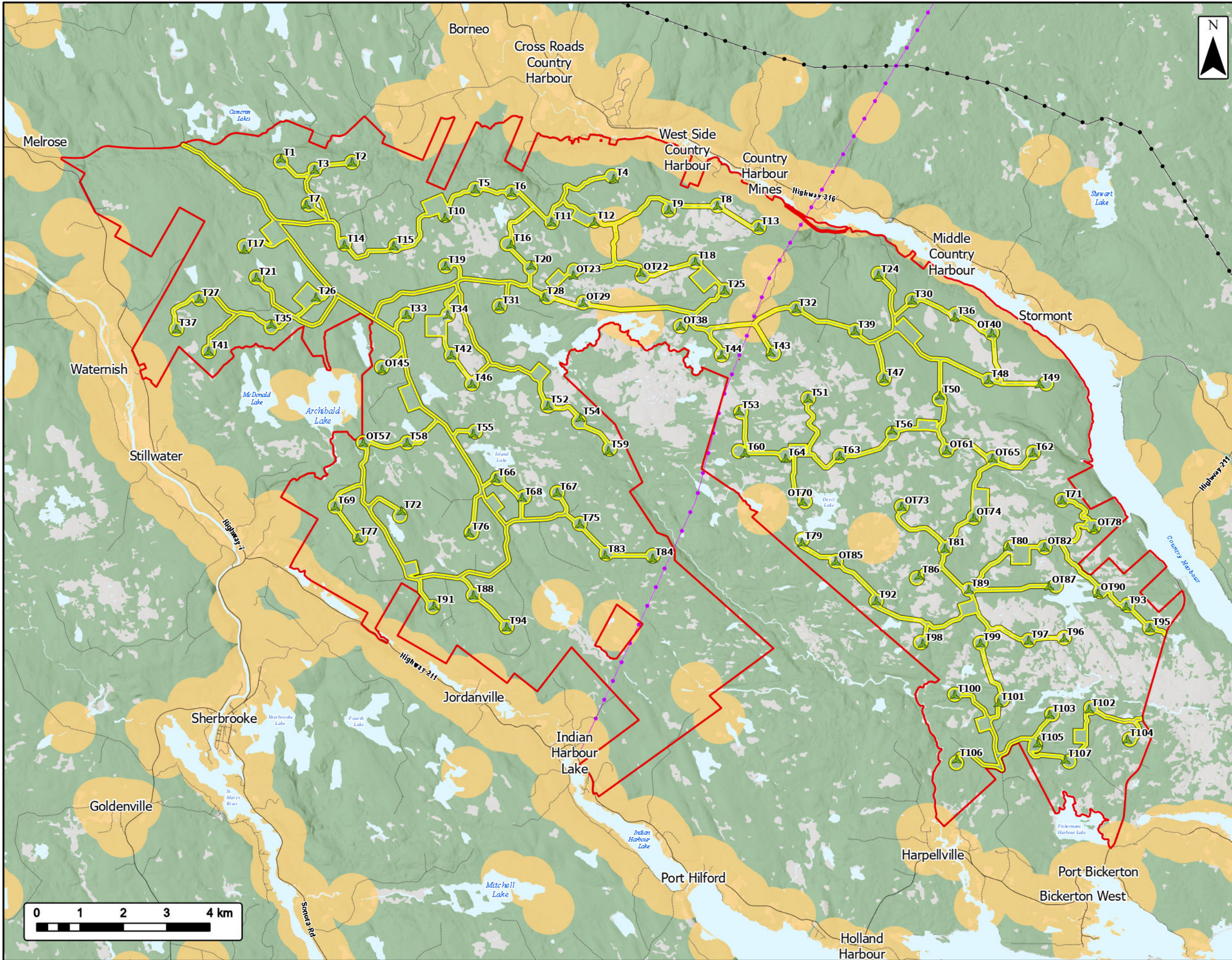
Species codes:
 BARS = Barn Swallow, CAWA = Canada Warbler, CONI = Common Nighthawk, EAWP = Eastern Wood-Peevee, EVGR = Evening Grosbeak, OSFL = Olive-sided Flycatcher, RUBL = Rusty Blackbird



Coordinate System: NAD 1983 UTM Zone 20N
 Sources: Service Nova Scotia, Esri, NASA, NGA, USGS, GeoNOVA, SNSIS, NSNRR, ACCDC, IBA Canada, CNWL, HERE, Garmin, USGS

Date:	2026-06-15	Project #:	25-11682
Scale:	1:85,000	Drawing #:	10.14
Drawn By:	K. Wallace		
Checked By:	A. Doane		





Harbour Hills Wind Project
Potential Barn Swallow Breeding Habitat



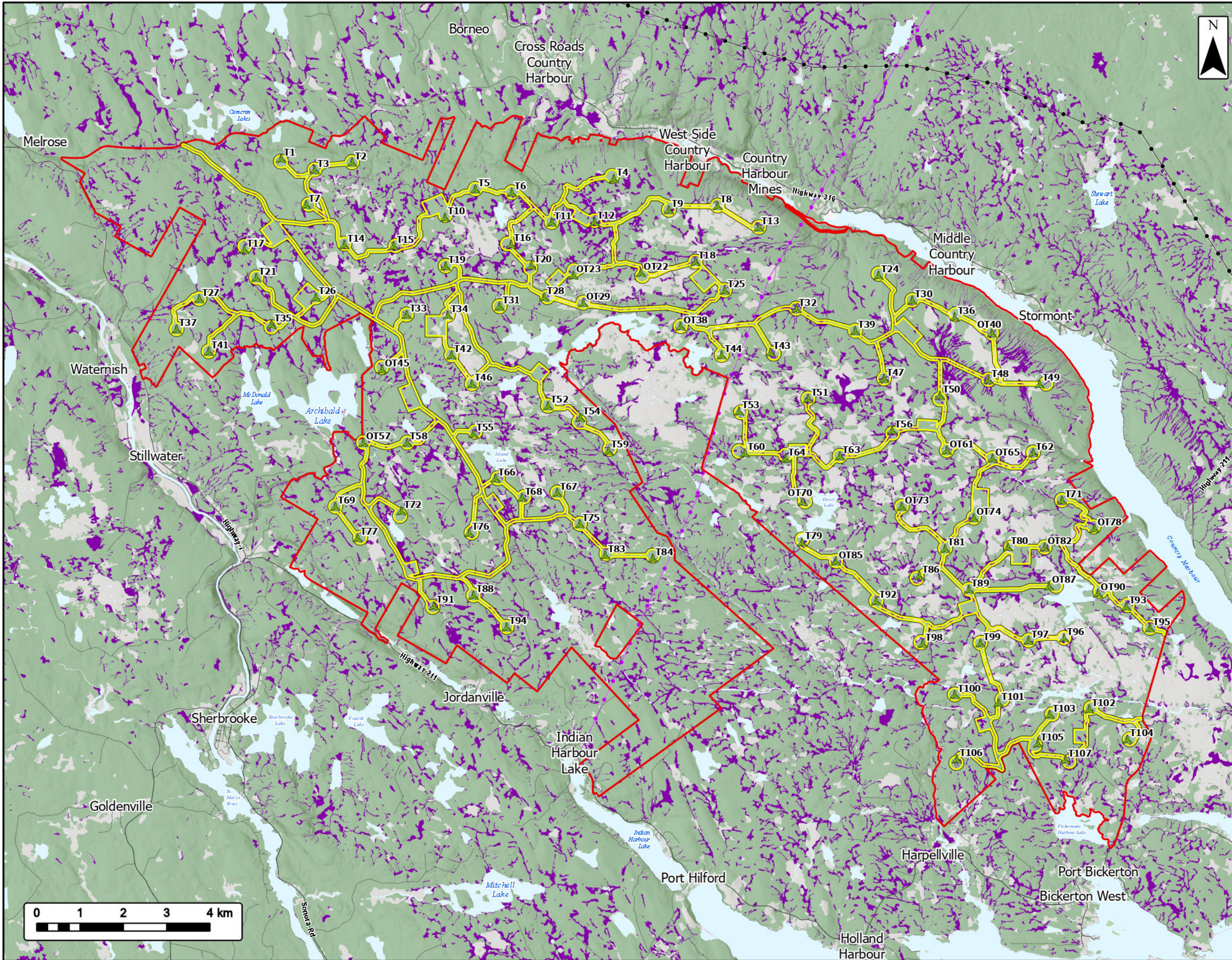
- Study Area
- Assessment Area
- Proposed Turbine Locations
- Potential Barn Swallow Breeding Habitat
- Transportation**
- Road
- Unpaved Road
- Utilities (Line)**
- Existing Pipeline
- Existing Transmission Lines
- Water Features**
- Mapped Lakes and Rivers



Coordinate System: NAD 1983 UTM Zone 20N
Sources: Service Nova Scotia, Esri, NASA, NGA, USGS, GeoNOVA, SNSIS, NSNRR, ACCDC, IBA Canada, CNWL, HERE, Garmin, USGS

Date: 2026-06-11	Project #: 25-11682
Scale: 1:85,000	Drawing #:
Drawn By: P. Opra	10.15A
Checked By: A. Doane	





Harbour Hills Wind Project

Potential Canada Warbler Breeding Habitat



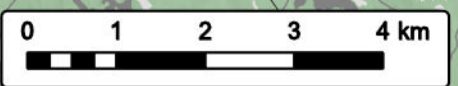
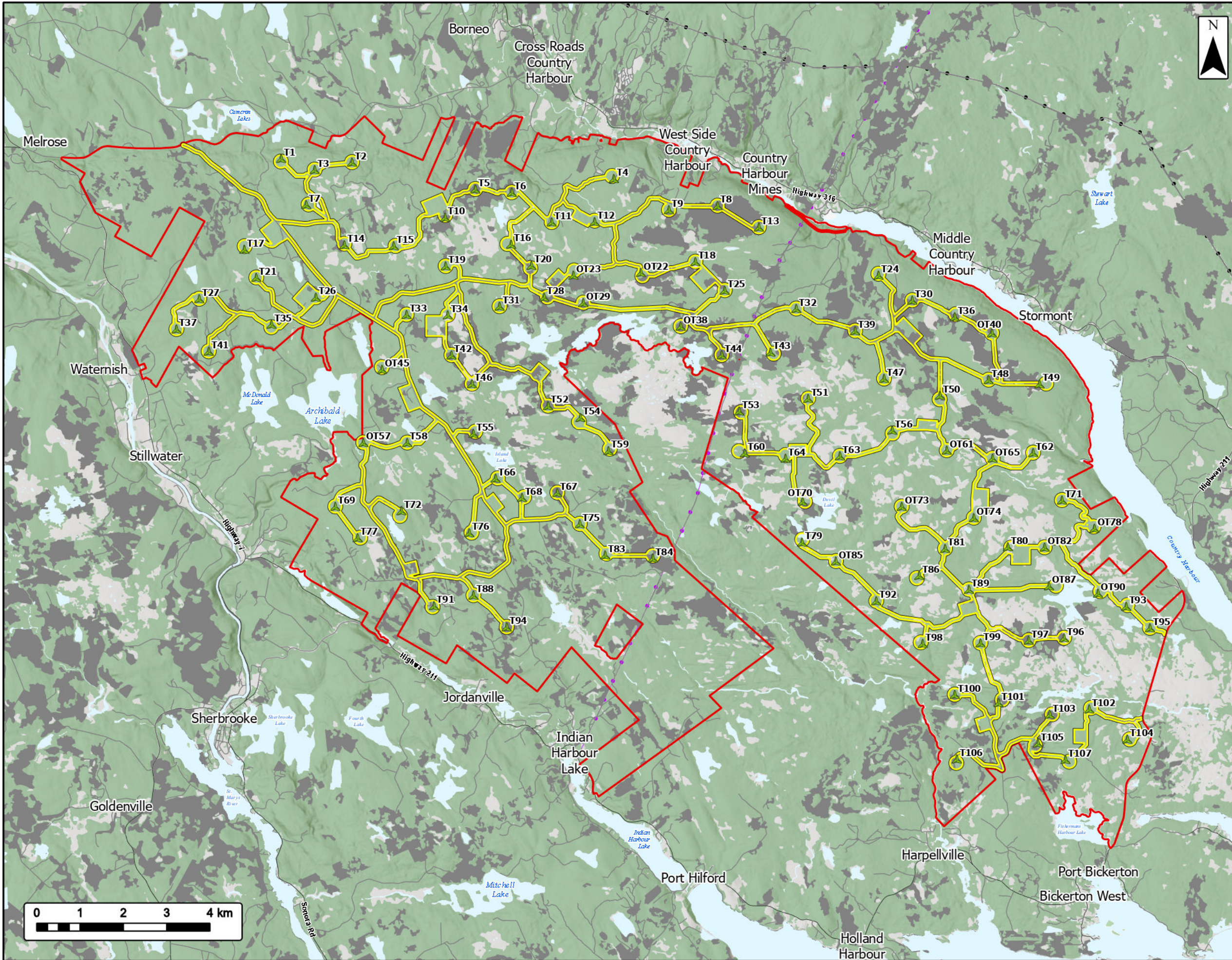
- Study Area
- Assessment Area
- Proposed Turbine Locations
- Potential Canada Warbler Breeding Habitat
- Transportation**
- Road
- Unpaved Road
- Utilities (Line)**
- Existing Pipeline
- Existing Transmission Lines
- Water Features**
- Mapped Lakes and Rivers



Coordinate System: NAD 1983 UTM Zone 20N
 Sources: Service Nova Scotia, Esri, NASA, NGA, USGS, GeoNOVA, SNSIS, NSNRR, ACCDC, IBA Canada, CNWI, HERE, Garmin, USGS

Date: 2026-06-11	Project #: 25-11682
Scale: 1:85,000	Drawing #:
Drawn By: P. Opra	10.15B
Checked By: A. Doane	





Harbour Hills Wind Project

Potential Common Nighthawk Breeding Habitat



- Study Area
- Assessment Area
- Proposed Turbine Locations
- Potential Common Nighthawk Breeding Habitat
- Transportation**
- Road
- Unpaved Road
- Utilities (Line)**
- Existing Pipeline
- Existing Transmission Lines
- Water Features**
- Mapped Lakes and Rivers



Coordinate System: NAD 1983 UTM Zone 20N
 Sources: Service Nova Scotia, Esri, NASA, NGA, USGS, GeoNOVA, SNSI, NSNRR, ACCDC, IBA Canada, CNWI, HERE, Garmin, USGS

Date: 2026-06-11	Project #: 25-11682
Scale: 1:85,000	Drawing #:
Drawn By: P. Opra	10.15C
Checked By: A. Doane	

