

# Harbour Hills Wind Project

Potential Evening Grosbeak Breeding Habitat



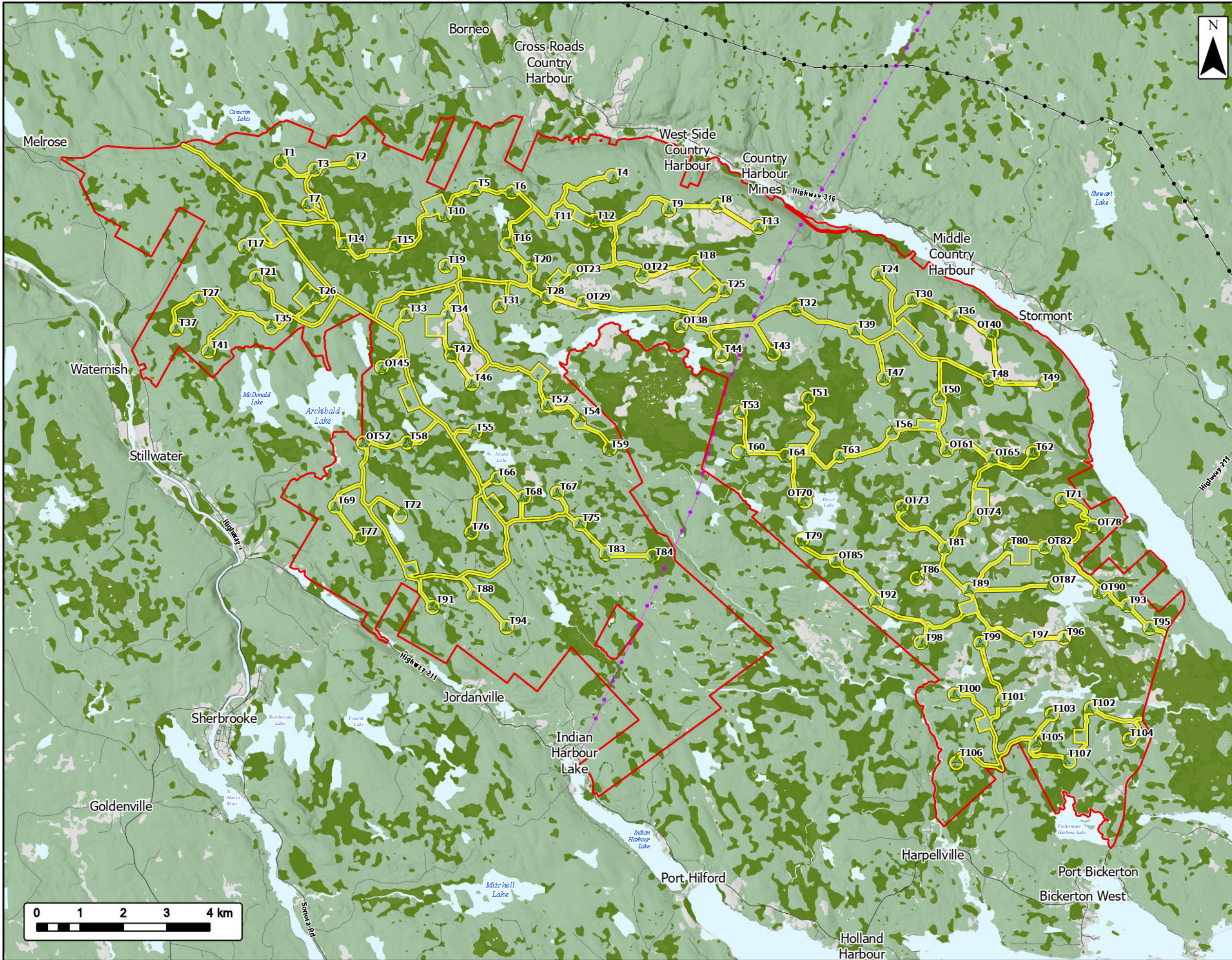
- Study Area
- Assessment Area
- Proposed Turbine Locations
- Potential Evening Grosbeak Breeding Habitat
- Transportation**
- Road
- Unpaved Road
- Utilities (Line)**
- Existing Pipeline
- Existing Transmission Lines
- Water Features**
- Mapped Lakes and Rivers



Coordinate System: NAD 1983 UTM Zone 20N  
 Sources: Service Nova Scotia, Esri, NASA, NGA, USGS, GeoNOVA, SNSIS, NSNRR, ACCDC, IBA Canada, CNWL, HERE, Garmin, USGS

Date: 2026-06-11	Project #: 25-11682
Scale: 1:85,000	Drawing #:
Drawn By: P. Opra	10.15D
Checked By: A. Doane	





# Harbour Hills Wind Project

Potential Olive-Sided Flycatcher Breeding Habitat



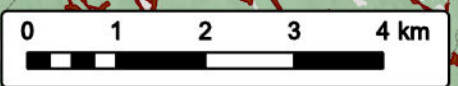
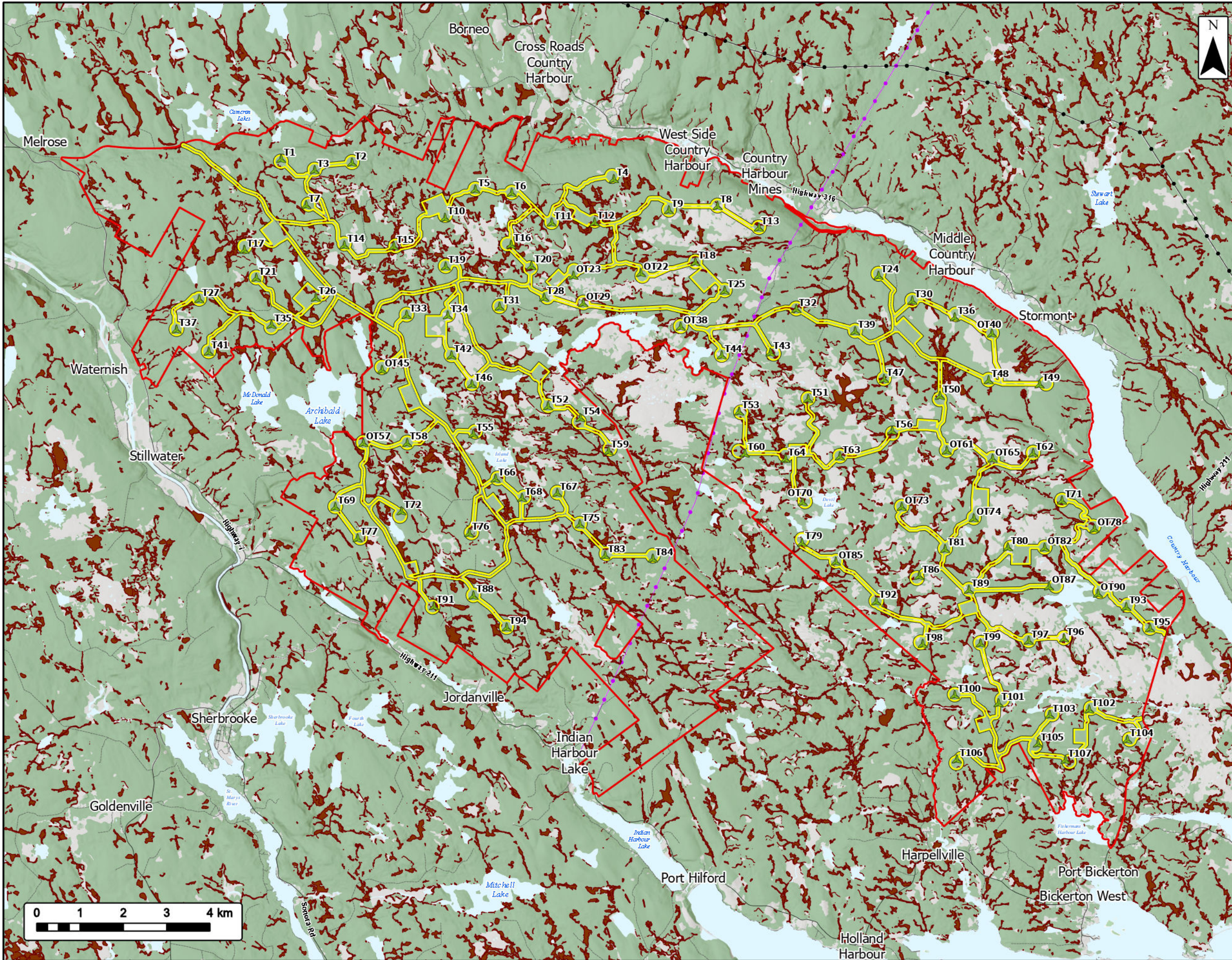
- Study Area
- Assessment Area
- Proposed Turbine Locations
- Potential Olive-Sided Flycatcher Breeding Habitat
- Transportation**
- Road
- Unpaved Road
- Utilities (Line)**
- Existing Pipeline
- Existing Transmission Lines
- Water Features**
- Mapped Lakes and Rivers



Coordinate System: NAD 1983 UTM Zone 20N  
 Sources: Service Nova Scotia, Esri, NASA, NGA, USGS, GeoNOVA, SNSIS, NSNRR, ACCDC, IBA Canada, CNWI, HERE, Garmin, USGS

Date: 2026-06-11	Project #: 25-11682
Scale: 1:85,000	Drawing #:
Drawn By: P. Opra	10.15E
Checked By: A. Doane	





# Harbour Hills Wind Project

Potential Rusty Blackbird Breeding Habitat



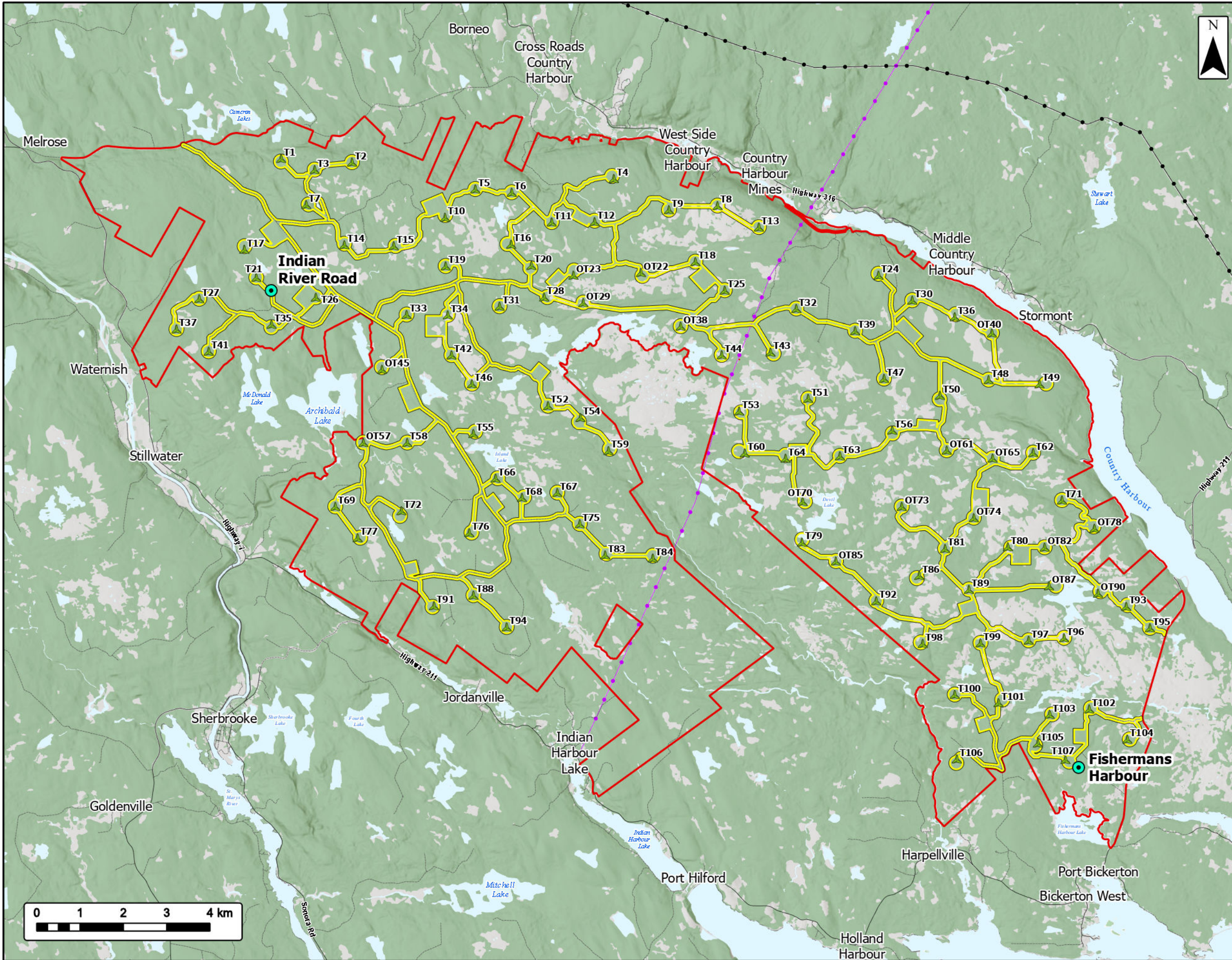
- Study Area
- Assessment Area
- Proposed Turbine Locations
- Potential Rusty Blackbird Breeding Habitat
- Transportation**
- Road
- Unpaved Road
- Utilities (Line)**
- Existing Pipeline
- Existing Transmission Lines
- Water Features**
- Mapped Lakes and Rivers



Coordinate System: NAD 1983 UTM Zone 20N  
 Sources: Service Nova Scotia, Esri, NASA, NGA, USGS, GeoNOVA, SNSIS, NSNRR, ACCDC, IBA Canada, CNWI, HERE, Garmin, USGS

Date: 2026-06-11	Project #: 25-11682
Scale: 1:85,000	Drawing #:
Drawn By: P. Opra	<h2>10.15F</h2>
Checked By: A. Doane	





# Harbour Hills Wind Project

Avian Radar and Acoustic Monitor Locations



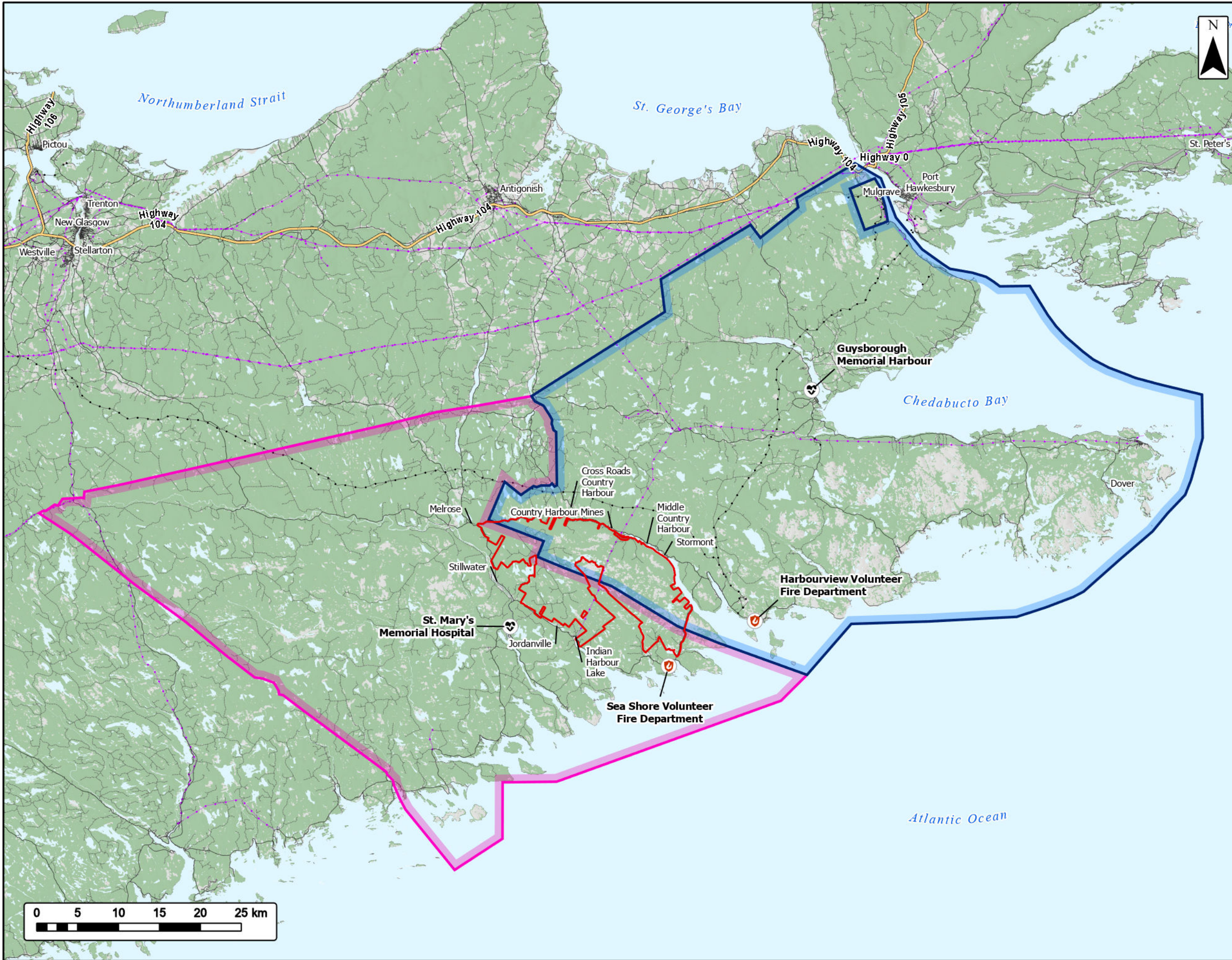
- Study Area
- Assessment Area
- Proposed Turbine Locations
- Avian Radar (ARS) and Acoustic Monitor (ARU) Location
- Transportation**
- Road
- Unpaved Road
- Utilities (Line)**
- Existing Pipeline
- Existing Transmission Lines
- Water Features**
- Mapped Lakes and Rivers



Coordinate System: NAD 1983 UTM Zone 20N  
 Sources: Service Nova Scotia, Esri, NASA, NGA, USGS, GeoNOVA, SNSIS, NSNRR, ACCDC, IBA Canada, CNWL, HERE, Garmin, USGS

Date: 2026-06-12	Project #: 25-11682
Scale: 1:85,000	Drawing #:
Drawn By: K. Wallace	10.16
Checked By: A. Doane	





# Harbour Hills Wind Project

Socioeconomic LAA



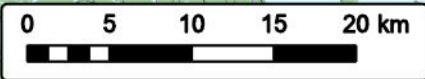
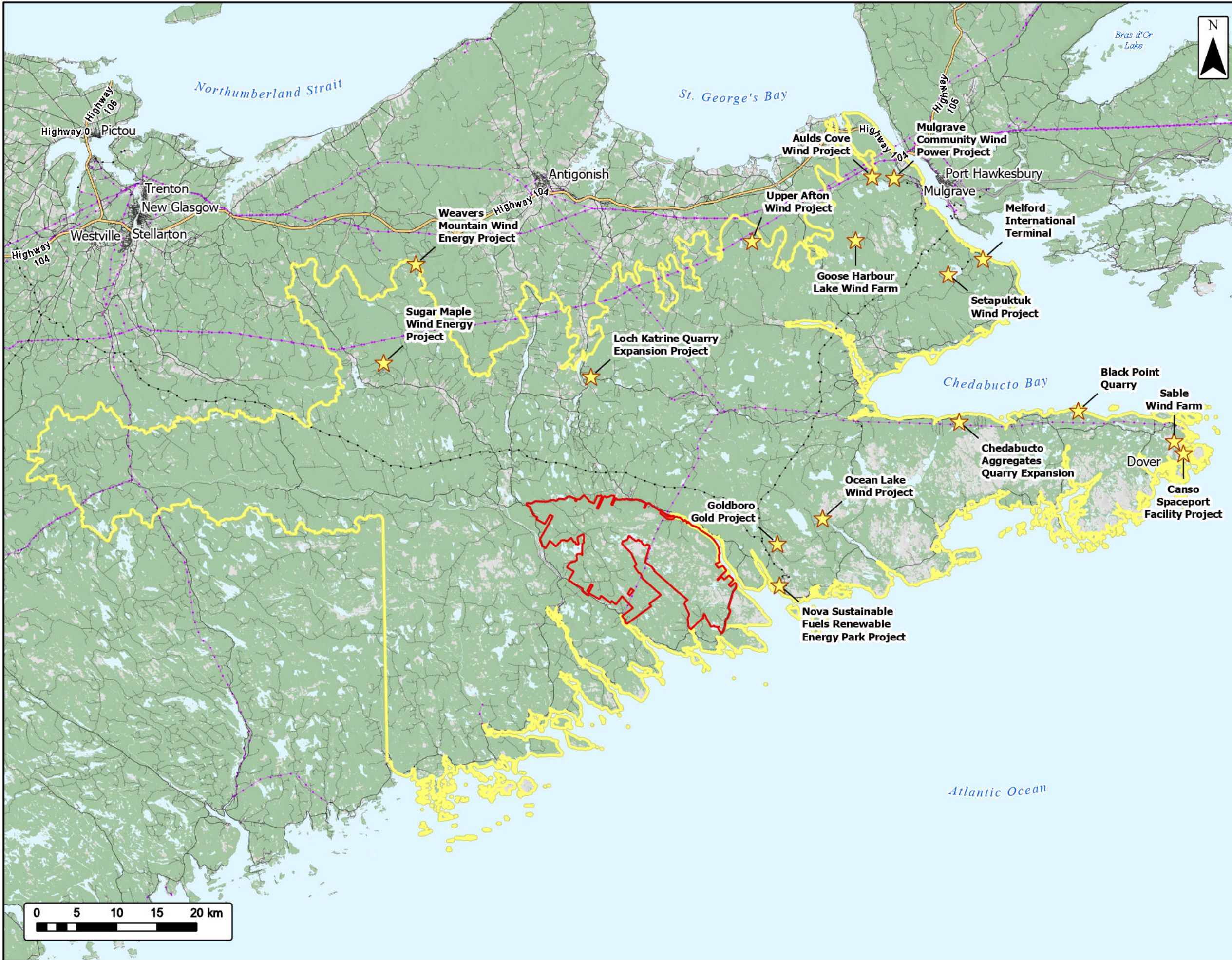
- Study Area
- Socioeconomic Local Assessment Area (LAA)**
- Municipality of the District of St. Mary's
- Municipality of the District of Guysborough
- Fire Department
- Hospital
- Transportation**
- Trans-Canada Highway
- Highway
- Road
- Unpaved Road
- Utilities (Line)**
- Existing Pipeline
- Existing Transmission Lines
- Water Features**
- Mapped Lakes and Rivers



Coordinate System: NAD 1983 UTM Zone 20N  
 Sources: Service Nova Scotia, Esri, CGIAR, USGS, GeoNOVA, SNSIS, NSNRR, ACCDC, IBA Canada, CNWI, HERE, Garmin, USGS

Date: 2026-06-11	Project #: 25-11682
Scale: 1:450,000	Drawing #: <b>11.1</b>
Drawn By: K. Wallace	
Checked By: A. Doane	





# Harbour Hills Wind Project

Cumulative Effects



- Study Area
- Regional Assessment Area (RAA)
- Nearby Project Locations
- Transportation**
- Trans-Canada Highway
- Highway
- Road
- Unpaved Road
- Utilities (Line)**
- Existing Pipeline
- Existing Transmission Lines
- Water Features**
- Mapped Lakes and Rivers



Coordinate System: NAD 1983 UTM Zone 20N  
 Sources: Service Nova Scotia, Esri, CGIAR, USGS, GeoNOVA, SNSIS, NSNRR, ACCDC, IBA Canada, CNWI, HERE, Garmin, USGS

Date: 2026-06-11	Project #: 25-11682
Scale: 1:460,000	Drawing #: <b>16.1</b>
Drawn By: K. Wallace	
Checked By: A. Doane	

