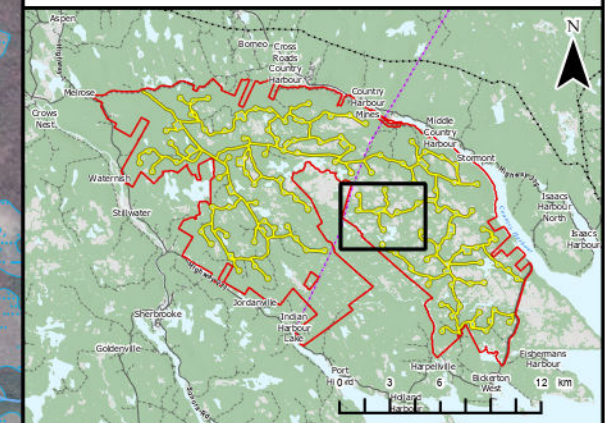
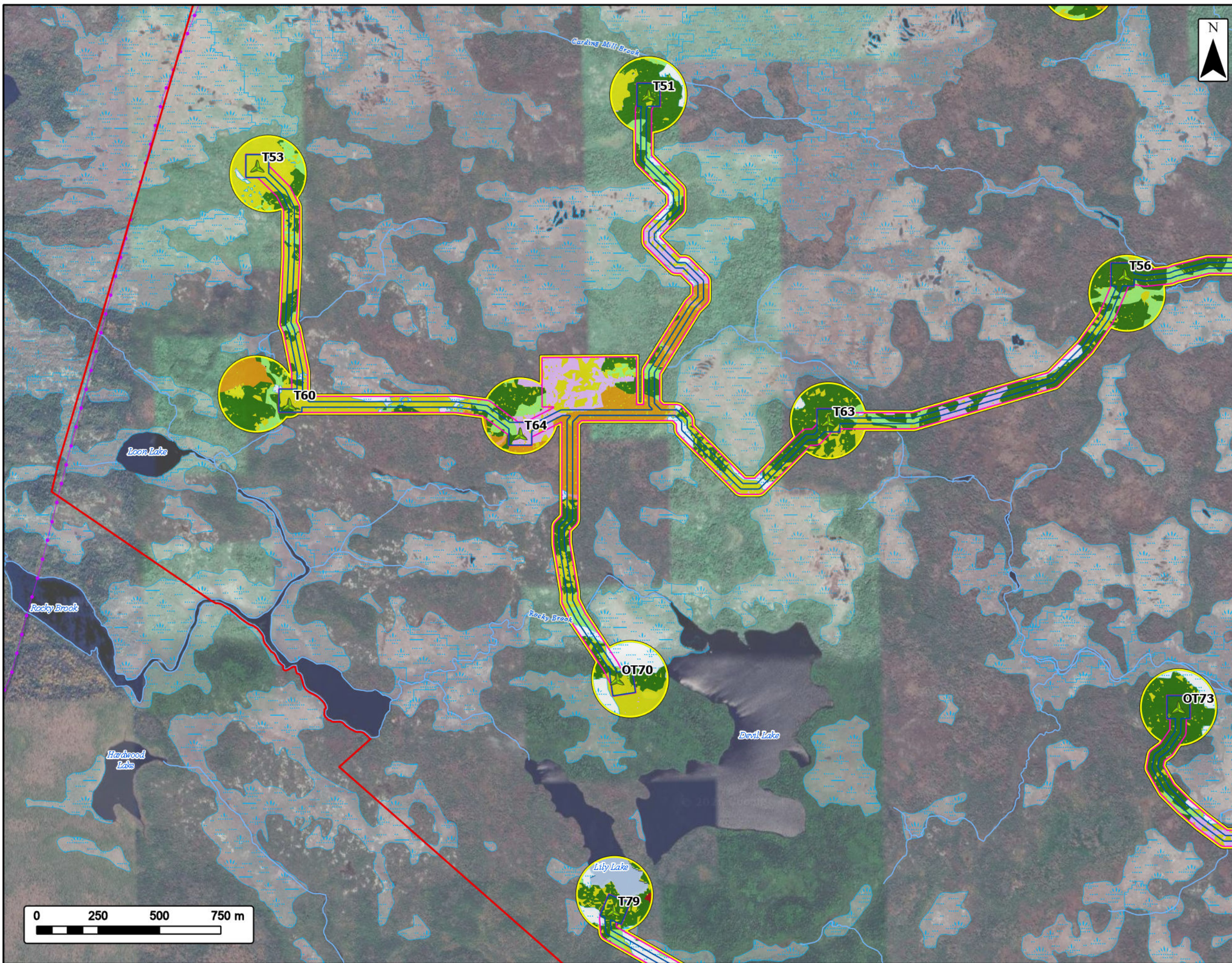


# Harbour Hills Wind Project

## Predicted Land Cover and Vegetation Community Assessment Points



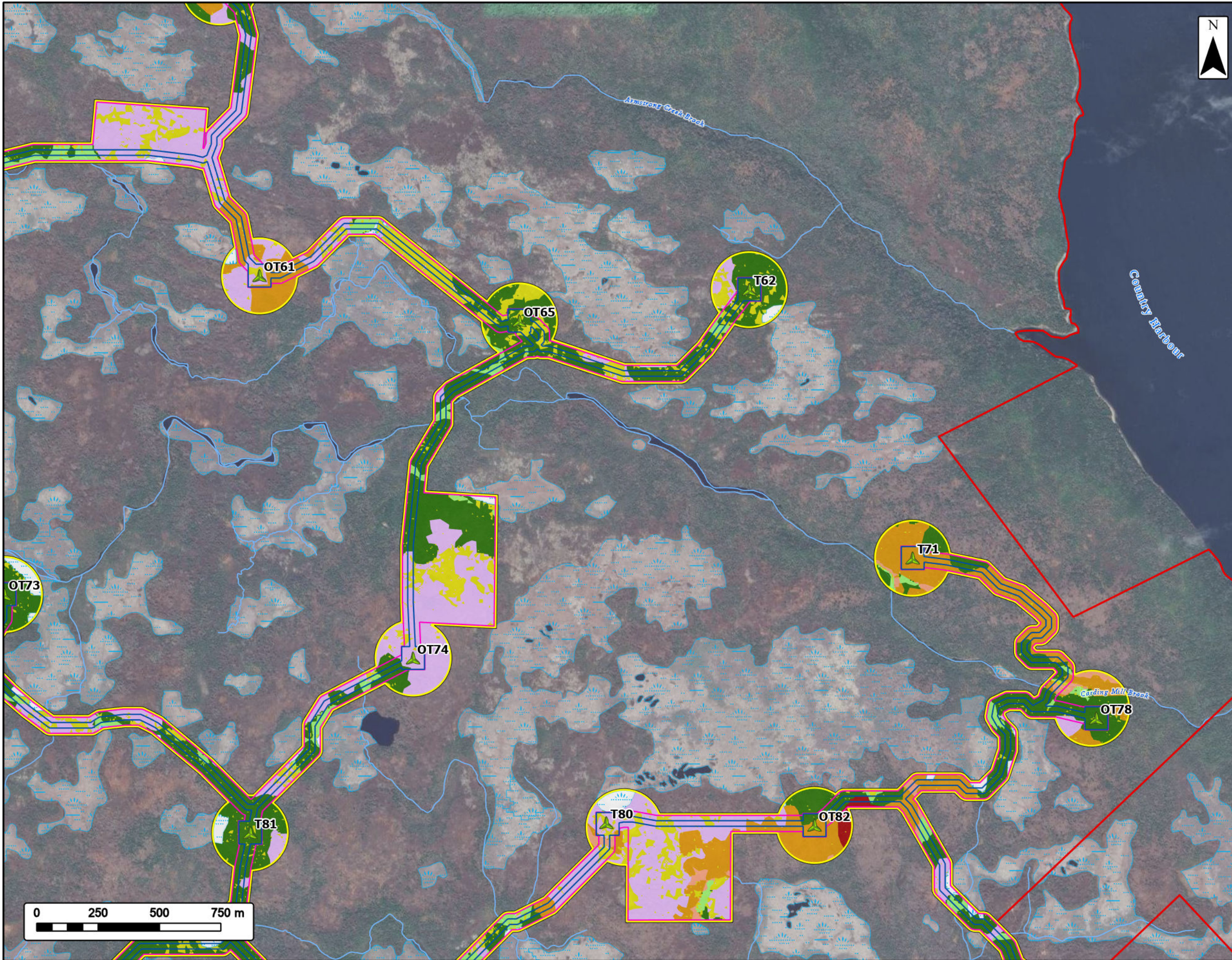
Study Area		Hardwood Forest	
Assessment Area		Mixedwood Forest	
Clearing Footprint		Mixedwood Wet Forest	
Project Footprint		Open Areas	
Proposed Turbine Locations		Open Wetland	
Utilities (Line)		Shrub/ Alders	
Existing Transmission Lines		Softwood Forest	
Water Features		Softwood Wet Forest	
Mapped Watercourses		Water	
Mapped Wetlands			



Coordinate System: NAD 1983 UTM Zone 20N  
 Sources: Esri, CGIAR, USGS, © OpenStreetMap (and) contributors, CC-BY-SA, GeoNOVA, SNSIS, NSNRR, ACCDC, IBA Canada, CNW, HERE, Garmin, USGS

Date: 2026-06-11	Project #: 25-11682
Scale: 1:15,000	Drawing #: <b>10.1K</b>
Drawn By: K. Wallace	Checked By: A. Doane



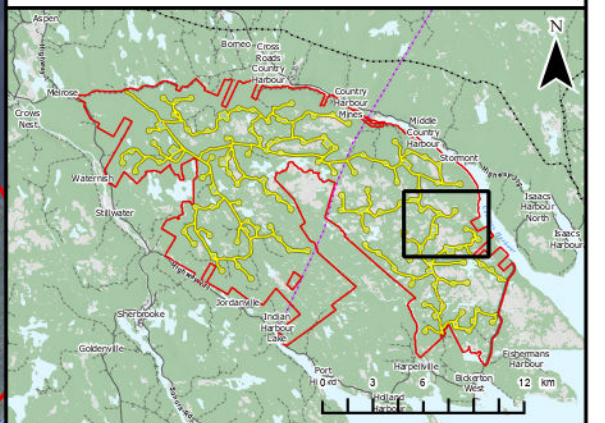


# Harbour Hills Wind Project

## Predicted Land Cover and Vegetation Community Assessment Points



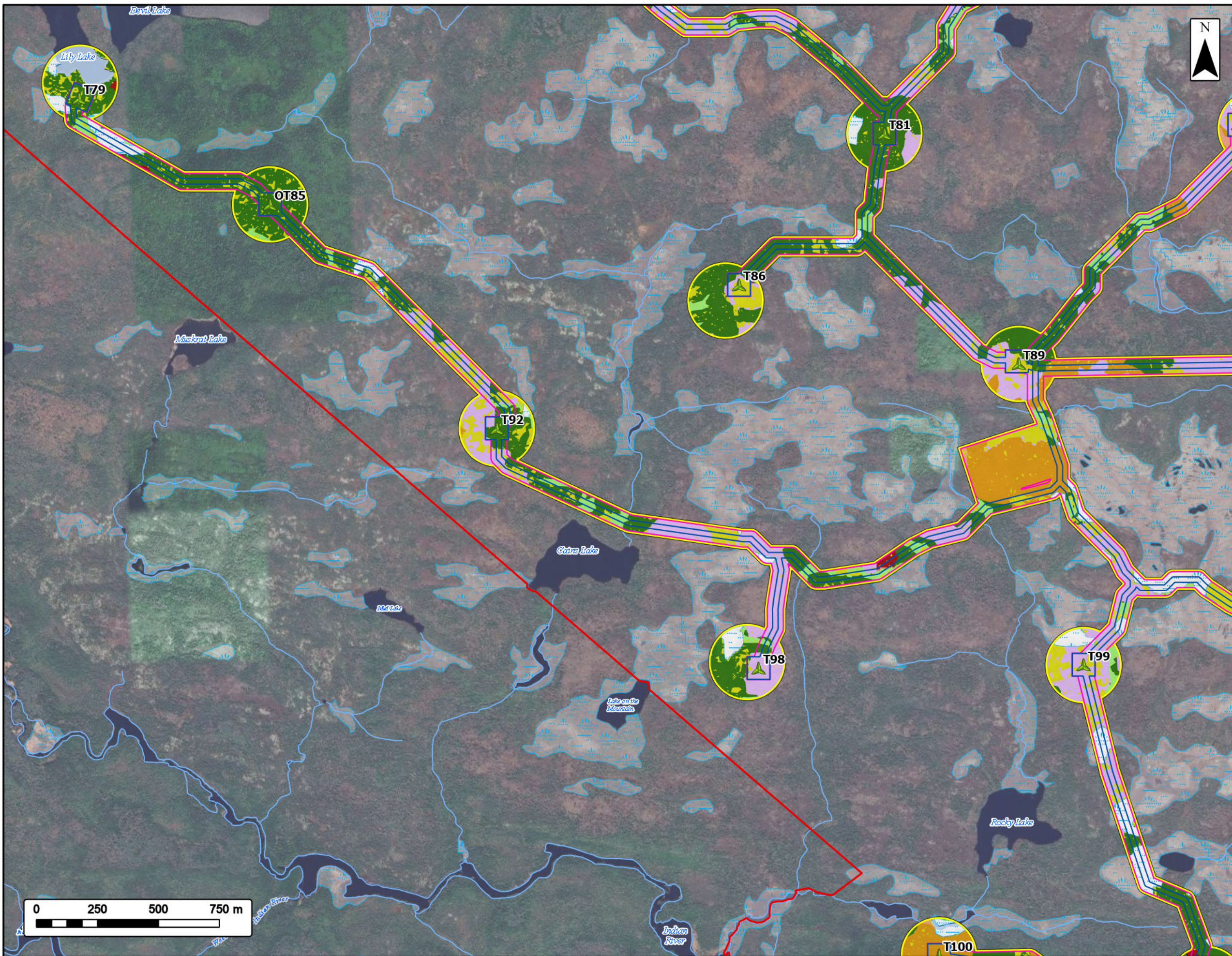
Study Area		Hardwood Forest	
Assessment Area		Mixedwood Forest	
Clearing Footprint		Mixedwood Wet Forest	
Project Footprint		Open Areas	
Proposed Turbine Locations		Open Wetland	
Water Features		Shrub/ Alders	
		Softwood Forest	
Mapped Watercourses		Softwood Wet Forest	
Mapped Wetlands		Water	



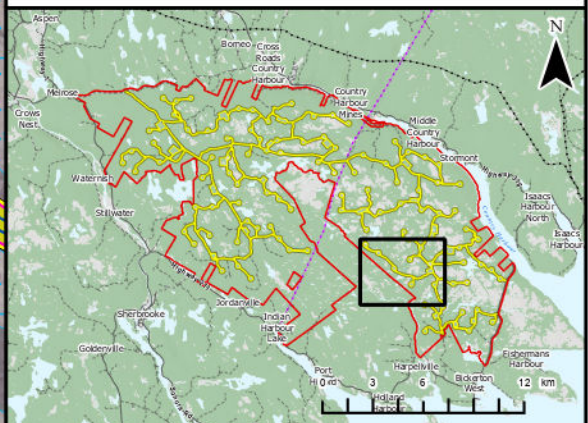
Coordinate System: NAD 1983 UTM Zone 20N  
 Sources: Esri, CGIAR, USGS, © OpenStreetMap (and) contributors, CC-BY-SA, GeoNOVA, SNSIS, NSNRR, ACCDC, IBA Canada, CNW, HERE, Garmin, USGS

Date:	2026-06-11	Project #:	25-11682
Scale:	1:15,000	Drawing #:	<b>10.1L</b>
Drawn By:	K. Wallace		
Checked By:	A. Doane		





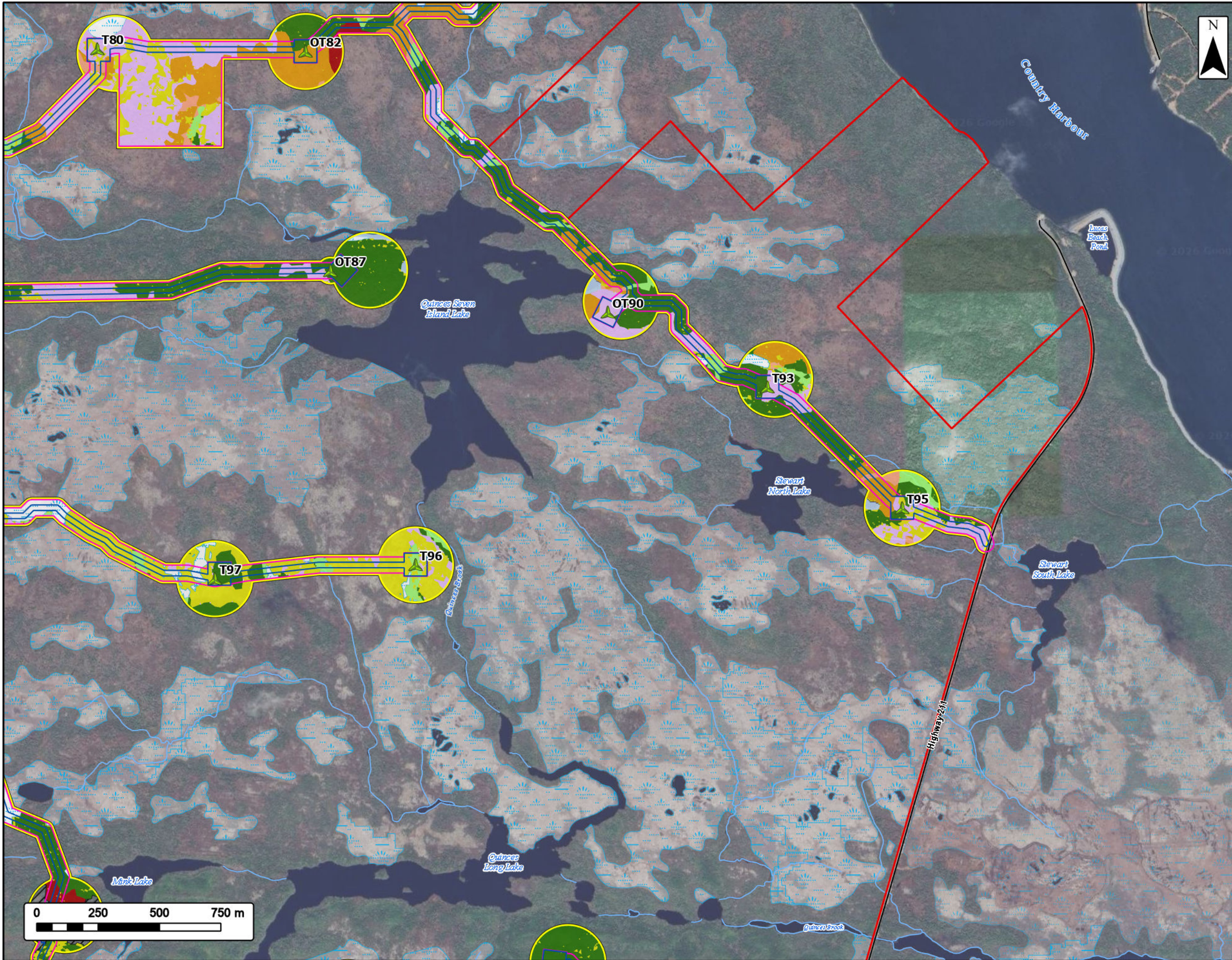
Study Area		Cutover	
Assessment Area		Hardwood Forest	
Clearing Footprint		Hardwood Wet Forest	
Project Footprint		Mixedwood Forest	
Proposed Turbine Locations		Mixedwood Wet Forest	
Water Features		Open Areas	
		Open Wetland	
Mapped Watercourses		Shrubby Alders	
Mapped Wetlands		Softwood Forest	
		Softwood Wet Forest	
		Water	



Coordinate System: NAD 1983 UTM Zone 20N  
 Sources: Esri, CGIAR, USGS, © OpenStreetMap (and) contributors, CC-BY-SA, GeoNOVA, SNSIS, NSNRR, ACCDC, IBA Canada, CNW, HERE, Garmin, USGS

Date:	2026-06-11	Project #:	25-11682
Scale:	1:15,000	Drawing #:	<b>10.1M</b>
Drawn By:	K. Wallace		
Checked By:	A. Doane		



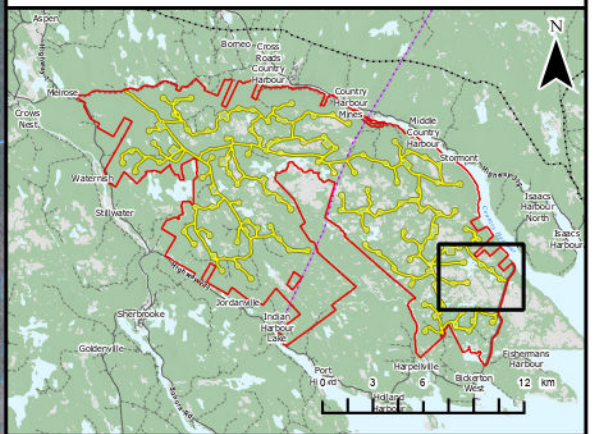


# Harbour Hills Wind Project

## Predicted Land Cover and Vegetation Community Assessment Points



Study Area		Cutover	
Assessment Area		Hardwood Forest	
Clearing Footprint		Mixedwood Forest	
Project Footprint		Mixedwood Wet Forest	
Proposed Turbine Locations		Open Areas	
Transportation		Open Wetland	
Road		Shrub/ Alders	
Unpaved Road		Softwood Forest	
Water Features		Softwood Wet Forest	
Mapped Watercourses		Water	
Mapped Wetlands			



Coordinate System: NAD 1983 UTM Zone 20N  
 Sources: Esri, CGIAR, USGS, © OpenStreetMap (and) contributors, CC-BY-SA, GeoNOVA, SNSIS, NSNRR, ACCDC, IBA Canada, CNW, HERE, Garmin, USGS

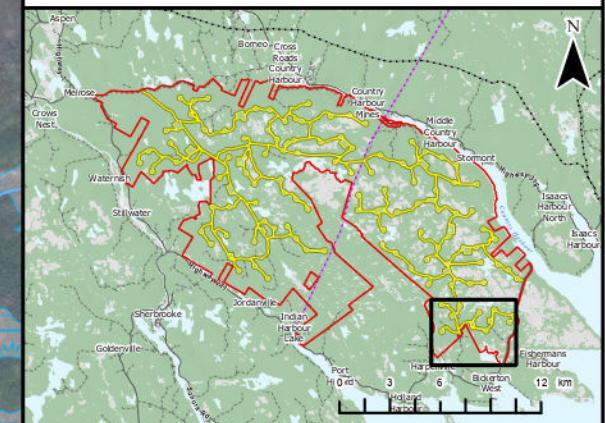
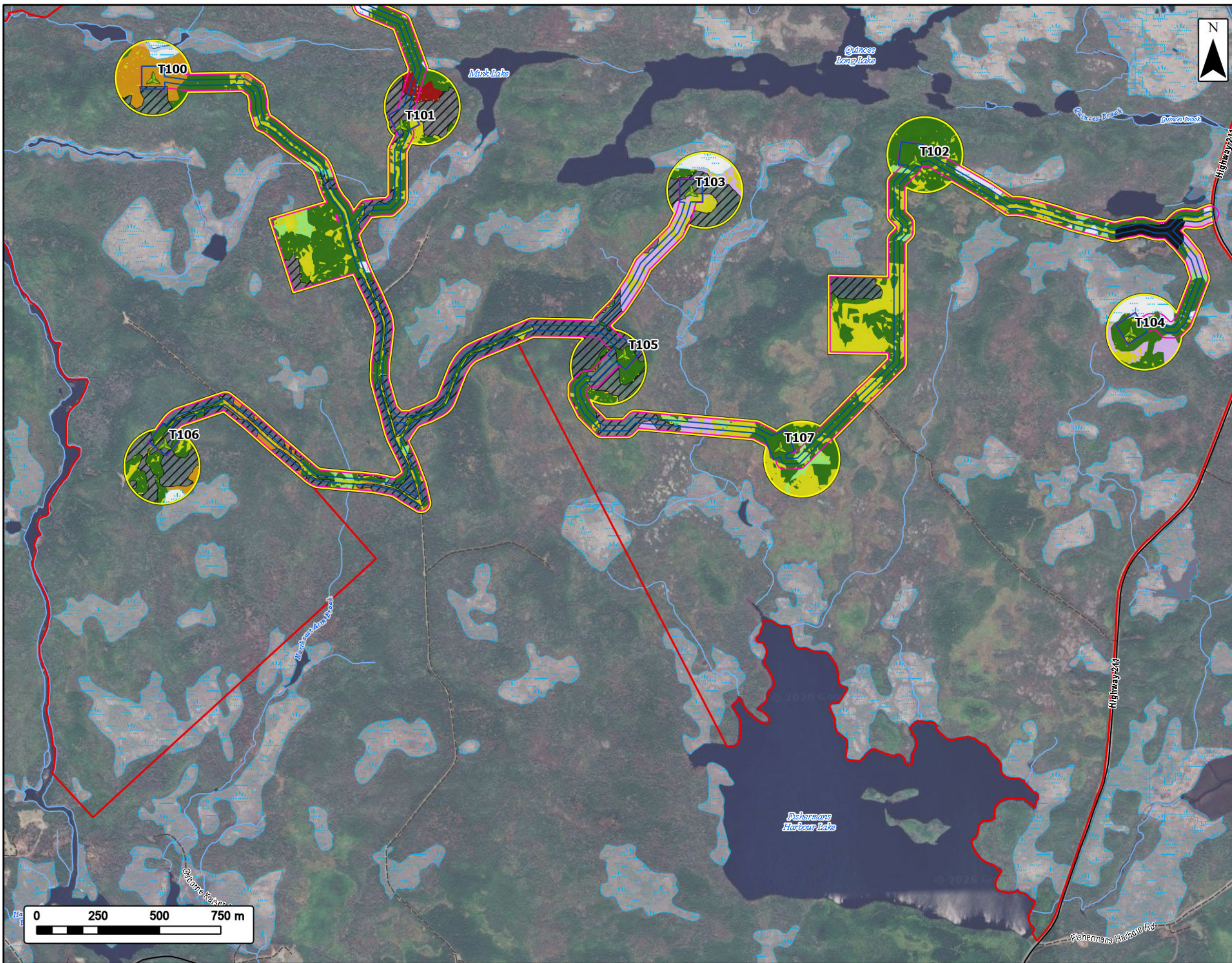
Date:	2026-06-11	Project #:	25-11682
Scale:	1:15,000	Drawing #:	<b>10.1N</b>
Drawn By:	K. Wallace		
Checked By:	A. Doane		



**Harbour Hills Wind Project**  
 Predicted Land Cover and Vegetation Community  
 Assessment Points



Study Area		Cutover	
Assessment Area		Cutover Wetland	
Clearing Footprint		Hardwood Forest	
Project Footprint		Mixedwood Forest	
Proposed Turbine Locations		Mixedwood Wet Forest	
Transportation		Open Areas	
Road		Open Wetland	
Unpaved Road		Shrub/ Alders	
Water Features		Softwood Forest	
Mapped Watercourses		Softwood Wet Forest	
Mapped Wetlands		Urban/ Developed	
		Water	



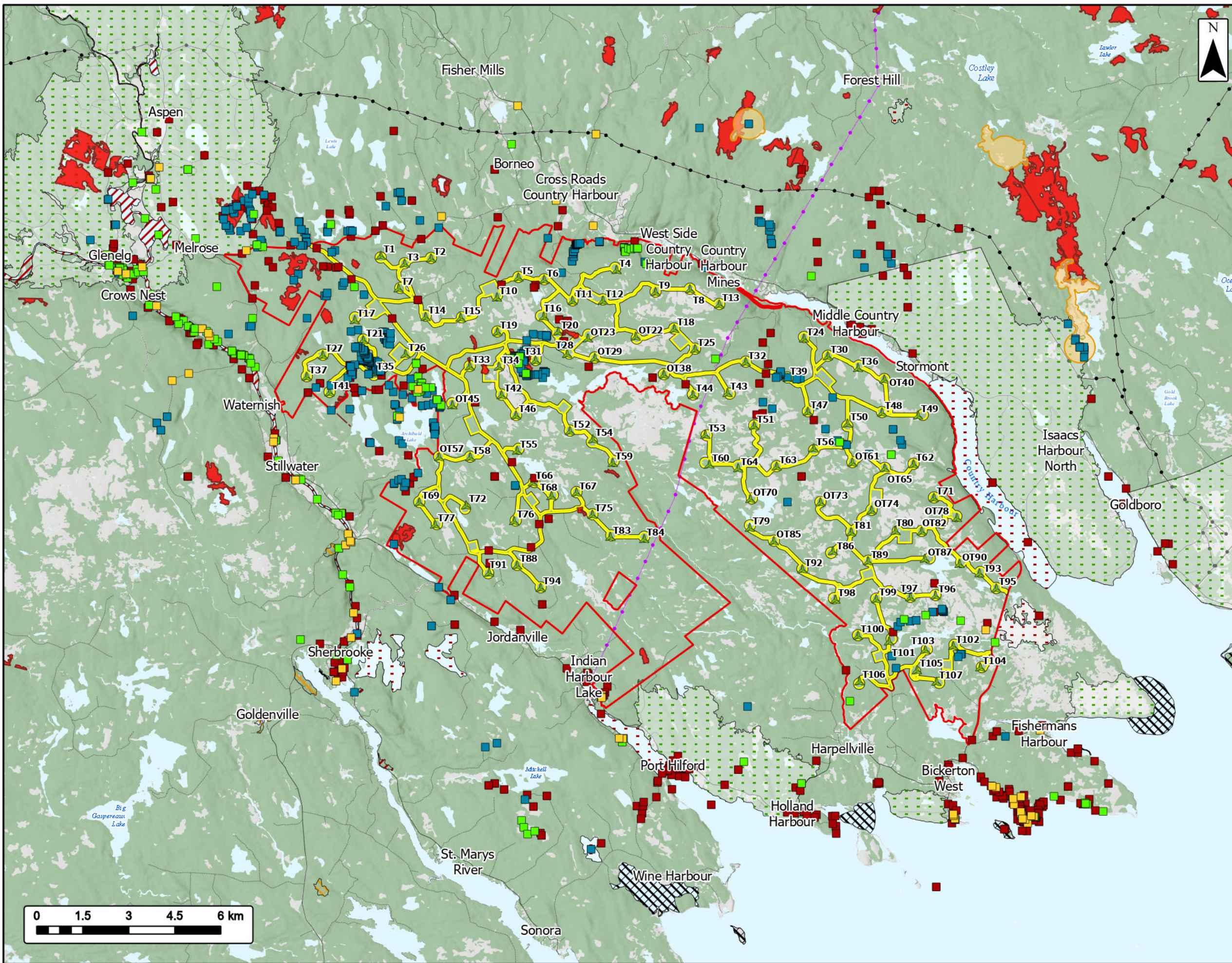
Coordinate System: NAD 1983 UTM Zone 20N  
 Sources: Esri, CGIAR, USGS, © OpenStreetMap (and) contributors, CC-BY-SA, GeoNOVA, SNSIS, NSNRR, ACCDC, IBA Canada, CNW, HERE, Garmin, USGS

Date:	2026-06-11	Project #:	25-11682
Scale:	1:15,000	Drawing #:	<b>10.10</b>
Drawn By:	K. Wallace		
Checked By:	A. Doane		



# Harbour Hills Wind Project

Terrestrial Vegetation Communities, Flora, and Fauna  
Desktop Results

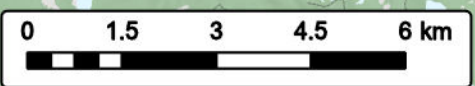


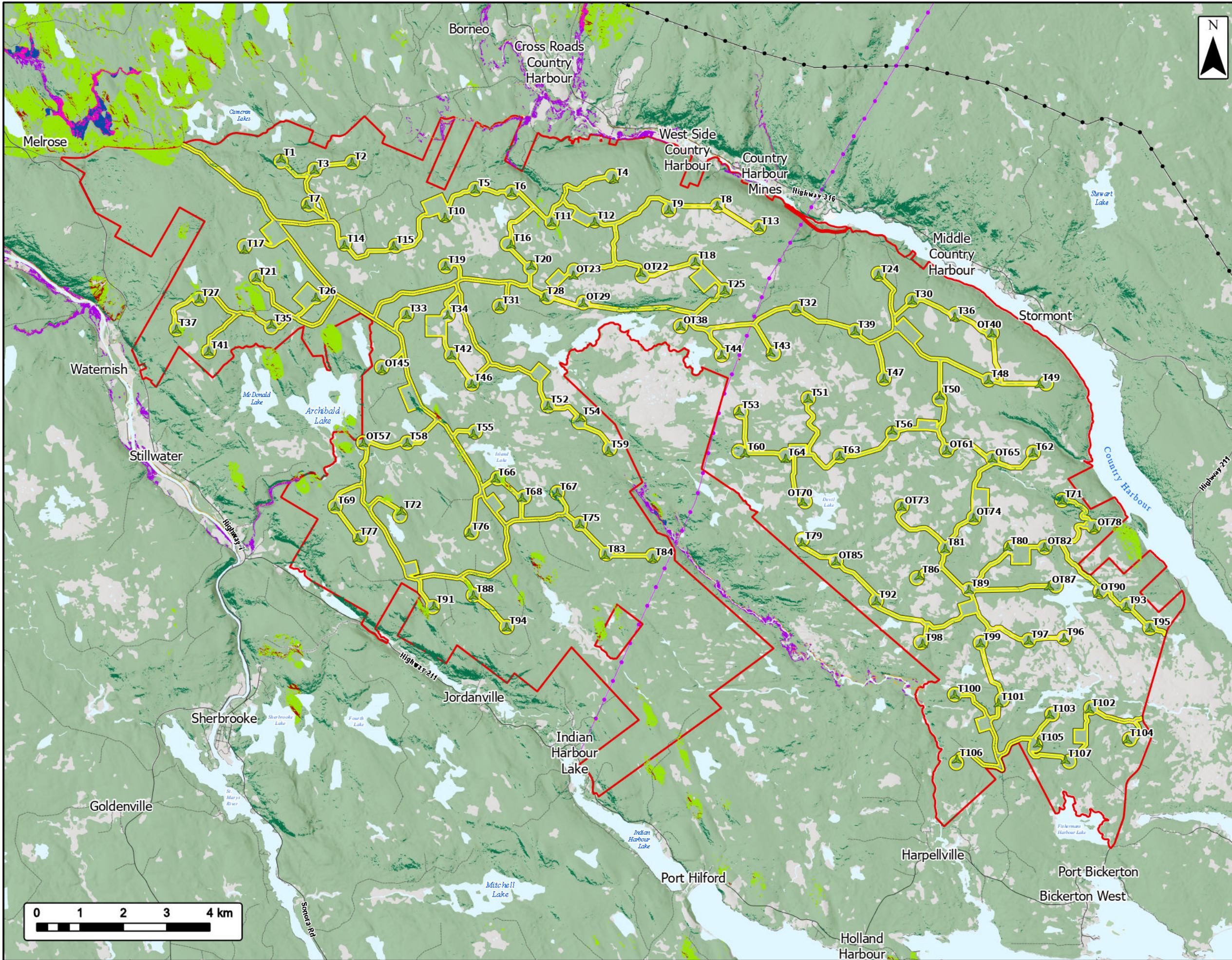
Study Area		<b>Transportation</b>	
Assessment Area		Road	
Proposed Turbine Locations		Unpaved Road	
<b>ACCDC Point Data</b>		<b>Utilities (Line)</b>	
Vertebrate Fauna		Existing Pipeline	
Nonvascular Flora		Existing Transmission Lines	
Vascular Flora		<b>Water Features</b>	
Invertebrate Fauna		Mapped Lakes and Rivers	
Old Growth Forest			
Critical Habitat			
<b>Significant Species and Habitats</b>			
Deer Wintering			
Migratory Bird			
Other Habitat			
Species at Risk			
Species of Concern			



Coordinate System: NAD 1983 UTM Zone 20N  
Sources: Service Nova Scotia, Esri, NASA, NGA, USGS, GeoNOVA, SNSIS, NSNRR, ACCDC, IBA Canada, CNWL, HERE, Garmin, USGS

Date:	2026-06-12	Project #:	25-11682
Scale:	1:120,000	Drawing #:	<b>10.2</b>
Drawn By:	K. Wallace		
Checked By:	A. Doane		





# Harbour Hills Wind Project

## Sensitive Flora Habitat Model Results



**Study Area** [Red outline symbol]

**Assessment Area** [Yellow outline symbol]

**Proposed Turbine Locations** [Green triangle symbol]

**Modelled Sensitive Flora Habitat**

- Calcareous surficial floodplain [Blue box]
- Floodplain banks [Orange box]
- Calcareous surficial with intact forest [Light green box]
- Floodplain with intact forest [Purple box]
- Calcareous surficial floodplain with intact forest [Pink box]
- Intact forest on SW, S, or SE facing slope [Dark green box]
- Calcareous surficial with intact forest on SW, S, or SE facing slope [Red box]

**Transportation**

- Road [Solid black line]
- Unpaved Road [Dashed black line]

**Utilities (Line)**

- Existing Pipeline [Black line with dots]
- Existing Transmission Lines [Purple line with dots]

**Water Features**

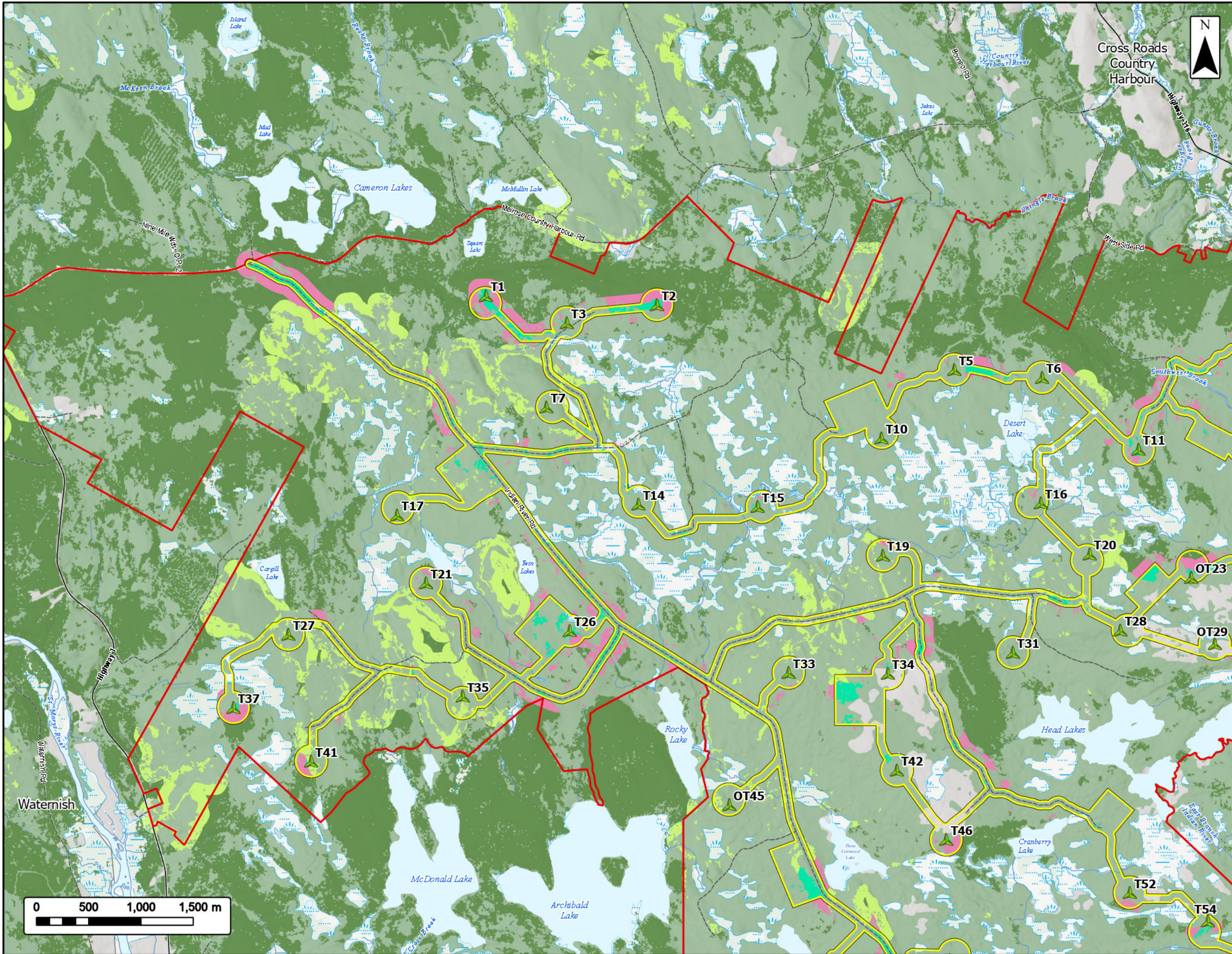
- Mapped Lakes and Rivers [Blue area]



Coordinate System: NAD 1983 UTM Zone 20N  
 Sources: Service Nova Scotia, Esri, NASA, NGA, USGS, GeoNOVA, SNSIS, NSNRR, ACCDC, IBA Canada, CNWI, HERE, Garmin, USGS

Date:	2026-06-12	Project #:	25-11682
Scale:	1:85,000	Drawing #:	<b>10.3</b>
Drawn By:	K. Wallace		
Checked By:	A. Doane		



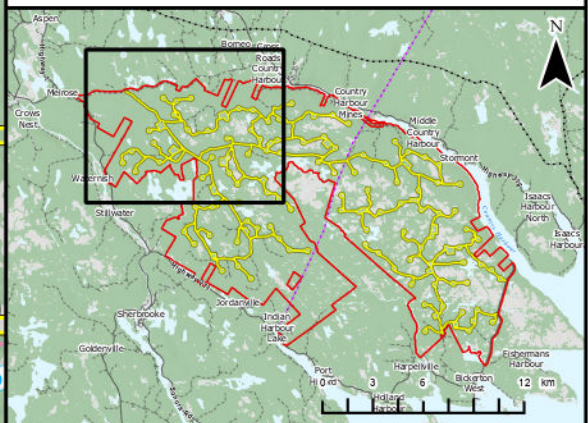


# Harbour Hills Wind Project

## Analysis of Edge Effects



- Study Area
- Assessment Area
- Proposed Turbine Locations
- New Edge Effect
- Intact Forest - Unaffected
- Existing Edge Effect
- Intact Forest - Direct Loss
- Transportation**
- Road
- Unpaved Road
- Water Features**
- Mapped Watercourses
- Mapped Lakes and Rivers



Coordinate System: NAD 1983 UTM Zone 20N  
 Sources: Esri, CGIAR, USGS, Servive Nova Scotia, Esri, NASA, NGA, USGS, GeoNOVA, SNSIS, NSNRR, ACCDC, IBA Canada, CNWI, HERE, Garmin, USGS

Date: 2026-06-11	Project #: 25-11682
Scale: 1:35,000	Drawing #: <b>10.4A</b>
Drawn By: K. Wallace	<b>10.4A</b>
Checked By: A. Doane	

