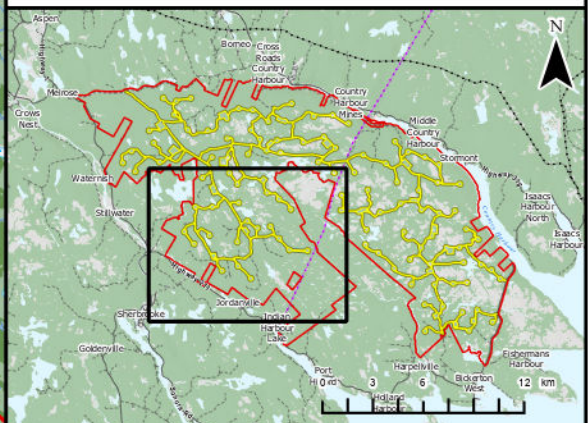


Harbour Hills Wind Project

Analysis of Edge Effects



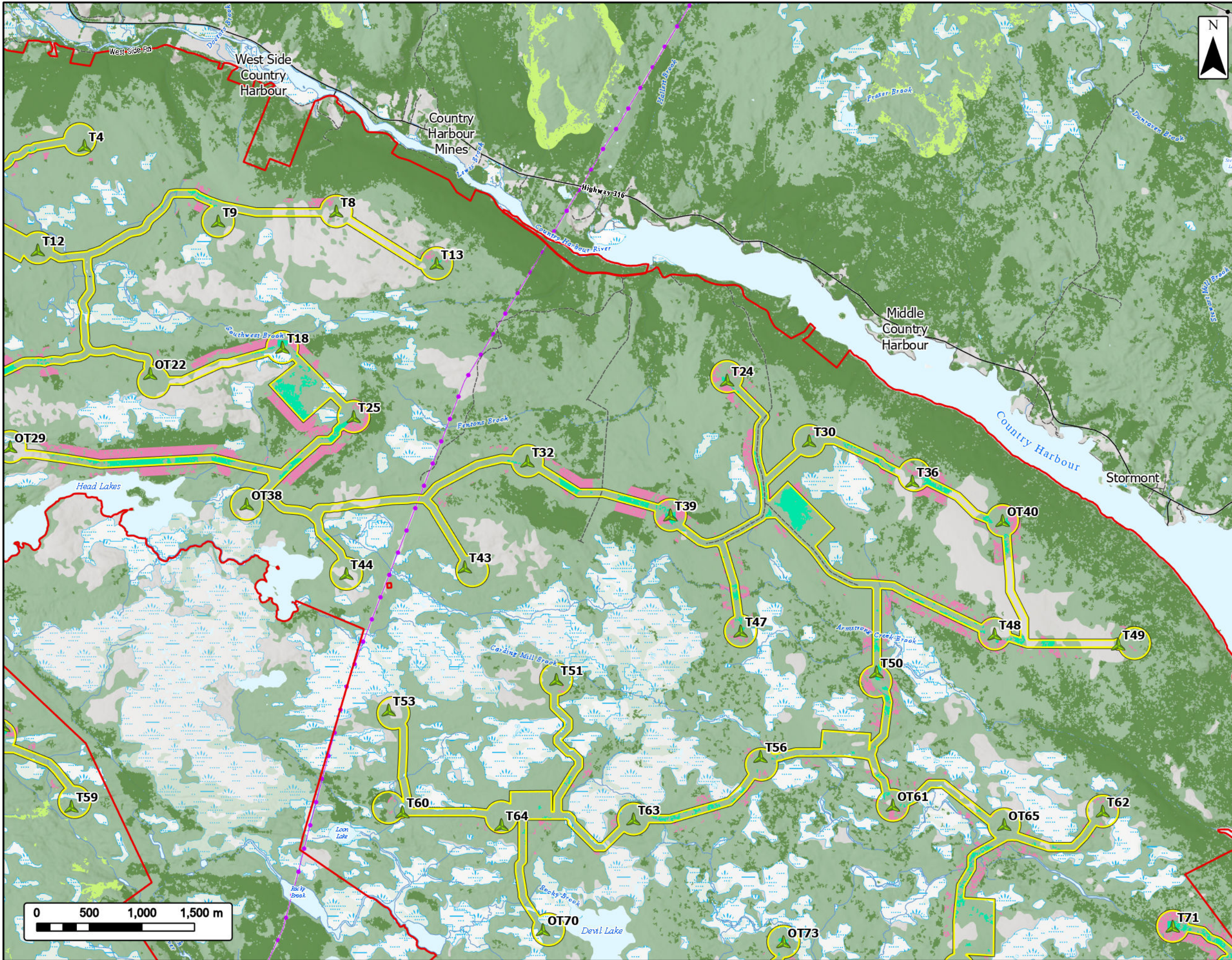
Study Area	
Assessment Area	
Proposed Turbine Locations	
New Edge Effect	
Intact Forest - Unaffected	
Existing Edge Effect	
Intact Forest - Direct Loss	
Transportation	
Road	
Unpaved Road	
Utilities (Line)	
Existing Transmission Lines	
Water Features	
Mapped Watercourses	
Mapped Lakes and Rivers	



Coordinate System: NAD 1983 UTM Zone 20N
 Sources: Esri, CGIAR, USGS, Servlo Nova Scotia, Esri, NASA, NGA, USGS, GeoNOVA, SNSI, NSNRR, ACCDC, IBA Canada, CNWI, HERE, Garmin, USGS

Date:	2026-06-11	Project #:	25-11682
Scale:	1:35,000	Drawing #:	10.4B
Drawn By:	K. Wallace		
Checked By:	A. Doane		



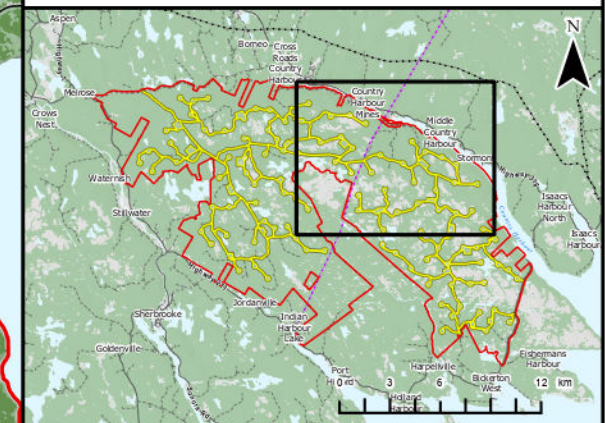


Harbour Hills Wind Project

Analysis of Edge Effects

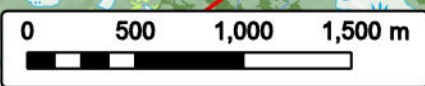


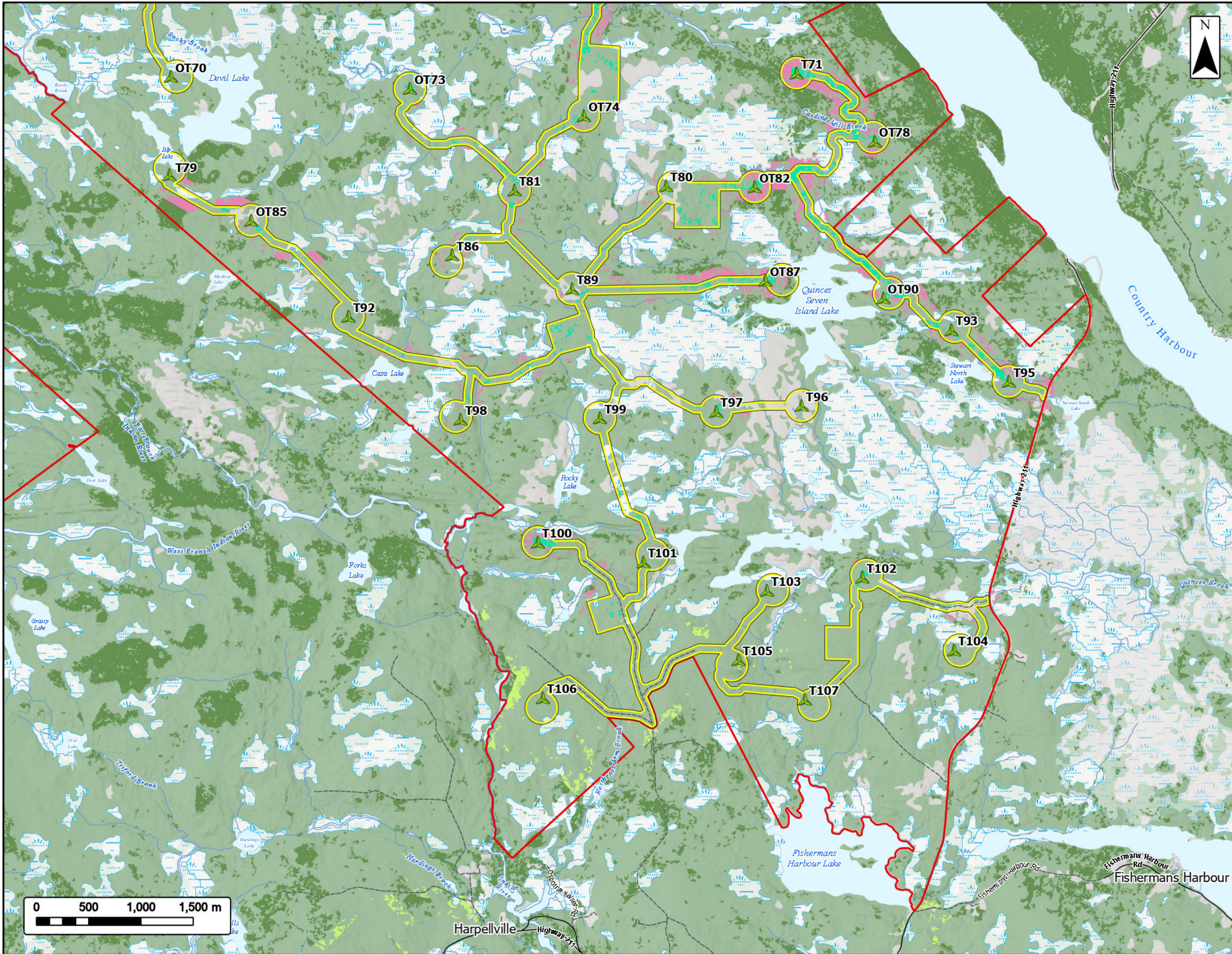
Study Area	
Assessment Area	
Proposed Turbine Locations	
New Edge Effect	
Intact Forest - Unaffected	
Existing Edge Effect	
Intact Forest - Direct Loss	
Transportation	
Road	
Unpaved Road	
Utilities (Line)	
Existing Pipeline	
Existing Transmission Lines	
Water Features	
Mapped Watercourses	
Mapped Lakes and Rivers	



Coordinate System: NAD 1983 UTM Zone 20N
 Sources: Esri, CGIAR, USGS, Service Nova Scotia, Esri, NASA, NGA, USGS, GeoNOVA, SNSI, NSNRR, ACCDC, IBA Canada, CNWI, HERE, Garmin, USGS

Date:	2026-06-11	Project #:	25-11682
Scale:	1:35,000	Drawing #:	10.4C
Drawn By:	K. Wallace		
Checked By:	A. Doane		



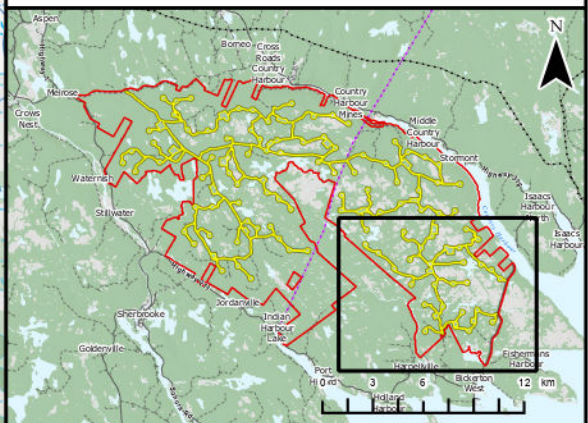


Harbour Hills Wind Project

Analysis of Edge Effects

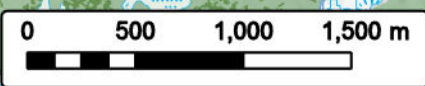


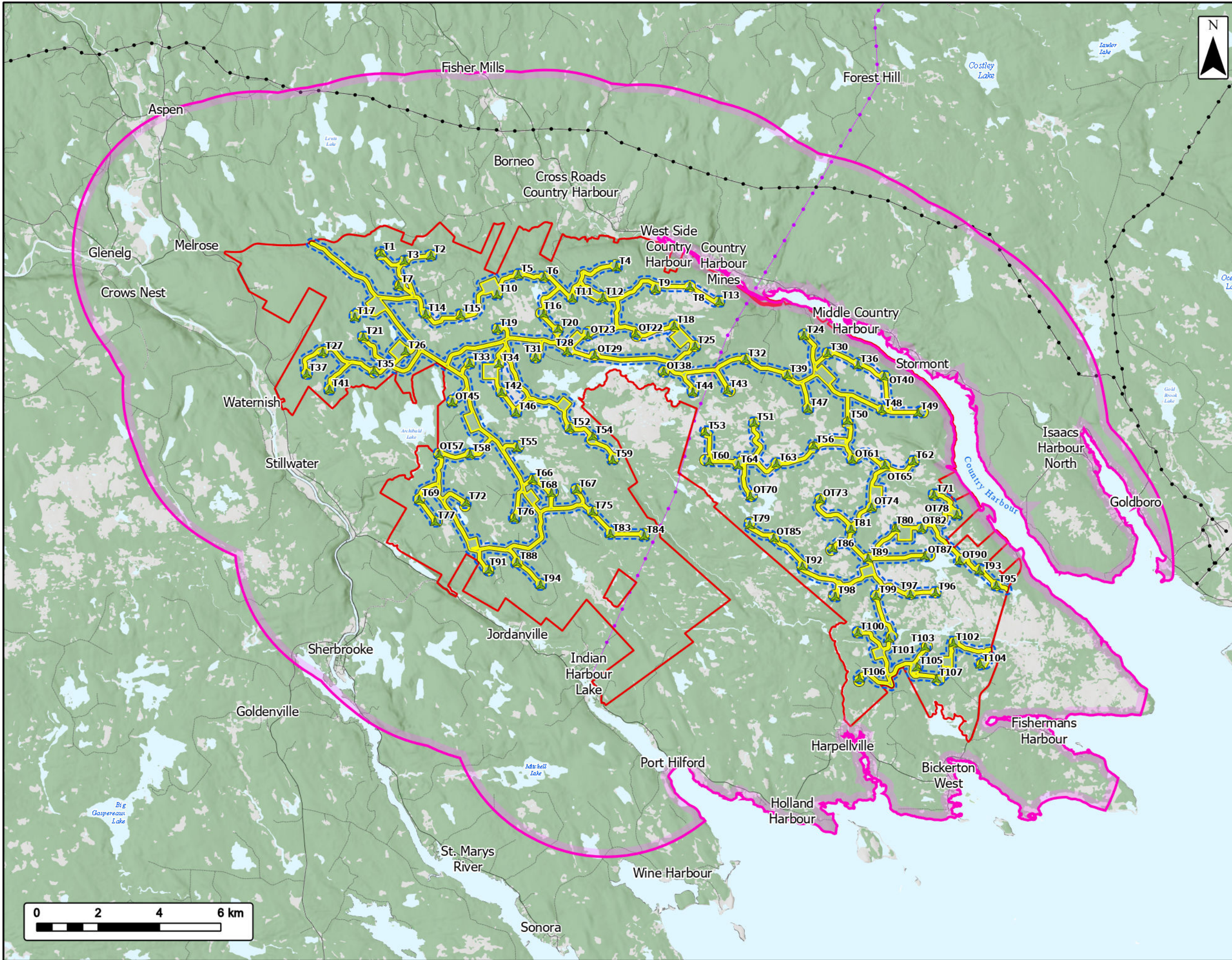
Study Area	
Assessment Area	
Proposed Turbine Locations	
New Edge Effect	
Intact Forest - Unaffected	
Existing Edge Effect	
Intact Forest - Direct Loss	
Transportation	
Road	
Unpaved Road	
Water Features	
Mapped Watercourses	
Mapped Lakes and Rivers	



Coordinate System: NAD 1983 UTM Zone 20N
 Sources: Esri, CGIAR, USGS, Servise Nova Scotia, Esri, NASA, NGA, USGS, GeoNOVA, SNSIS, NSNRR, ACCDC, IBA Canada, CNWI, HERE, Garmin, USGS

Date:	2026-06-11	Project #:	25-11682
Scale:	1:35,000	Drawing #:	10.4D
Drawn By:	K. Wallace		
Checked By:	A. Doane		





Harbour Hills Wind Project

Terrestrial Vegetation Communities, Flora, and Fauna
Spatial Boundaries



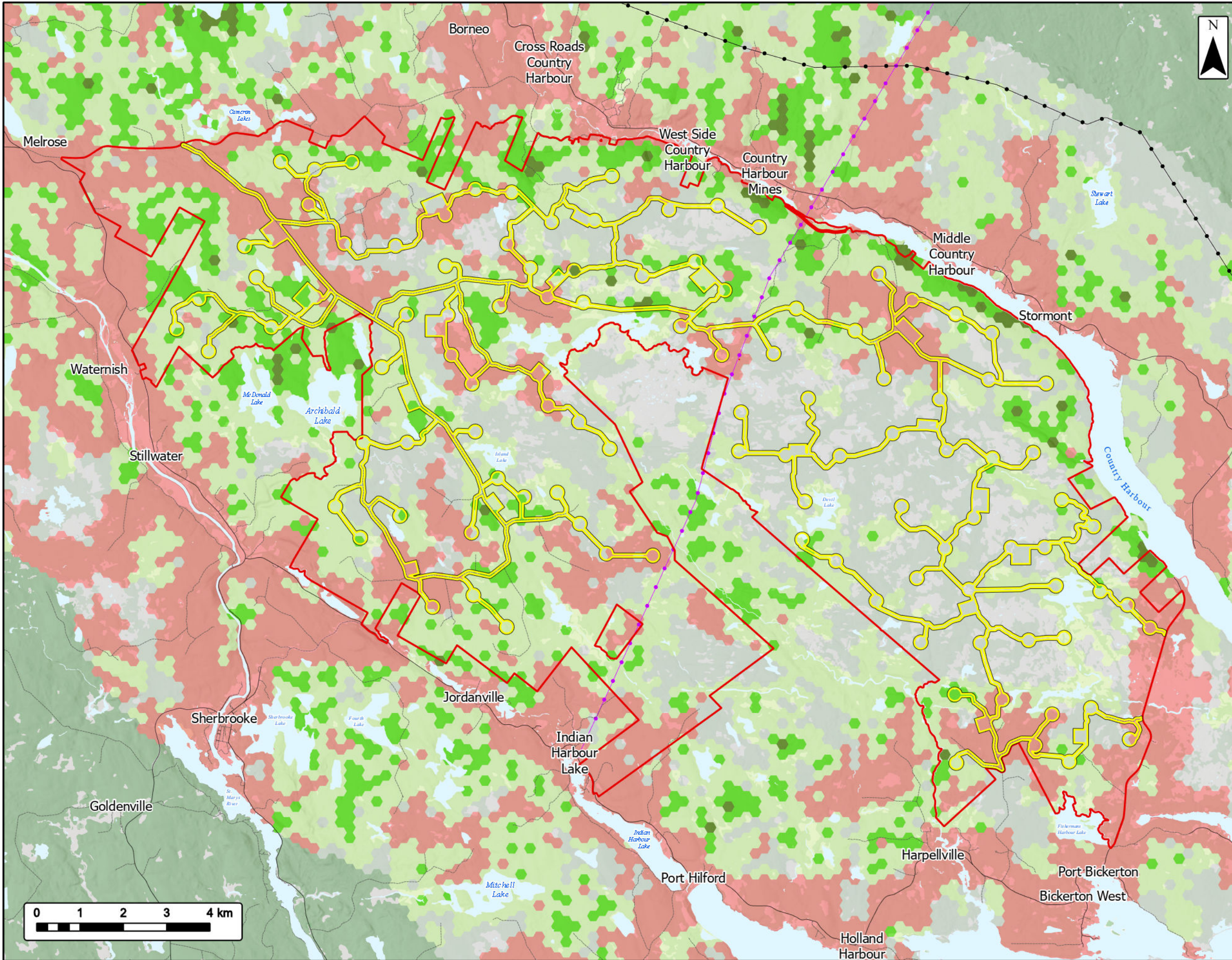
- Study Area
- Assessment Area
- Flora Regional Assessment Area (RAA) / Fauna Local Assessment Area (LAA)
- Flora Local Assessment Area (LAA)
- Proposed Turbine Locations
- Transportation**
- Road
- Unpaved Road
- Utilities (Line)**
- Existing Pipeline
- Existing Transmission Lines
- Water Features**
- Mapped Lakes and Rivers



Coordinate System: NAD 1983 UTM Zone 20N
 Sources: Service Nova Scotia, Esri, NASA, NGA, USGS, GeoNOVA, SNSIS, NSNRR, ACCDC, IBA Canada, CNWL, HERE, Garmin, USGS

Date: 2026-06-11	Project #: 25-11682
Scale: 1:120,000	Drawing #:
Drawn By: K. Wallace	10.5
Checked By: A. Doane	







Harbour Hills Wind Project


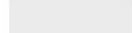
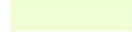


Mainland Moose Habitat Suitability Modelling Results





Study Area 

Assessment Area 



Moose Habitat Suitability Index

- Poor 
- Neutral 
- Fair 
- Better 
- Best 


Transportation

- Road 
- Unpaved Road 

Utilities (Line)

- Existing Pipeline 
- Existing Transmission Lines 

Water Features

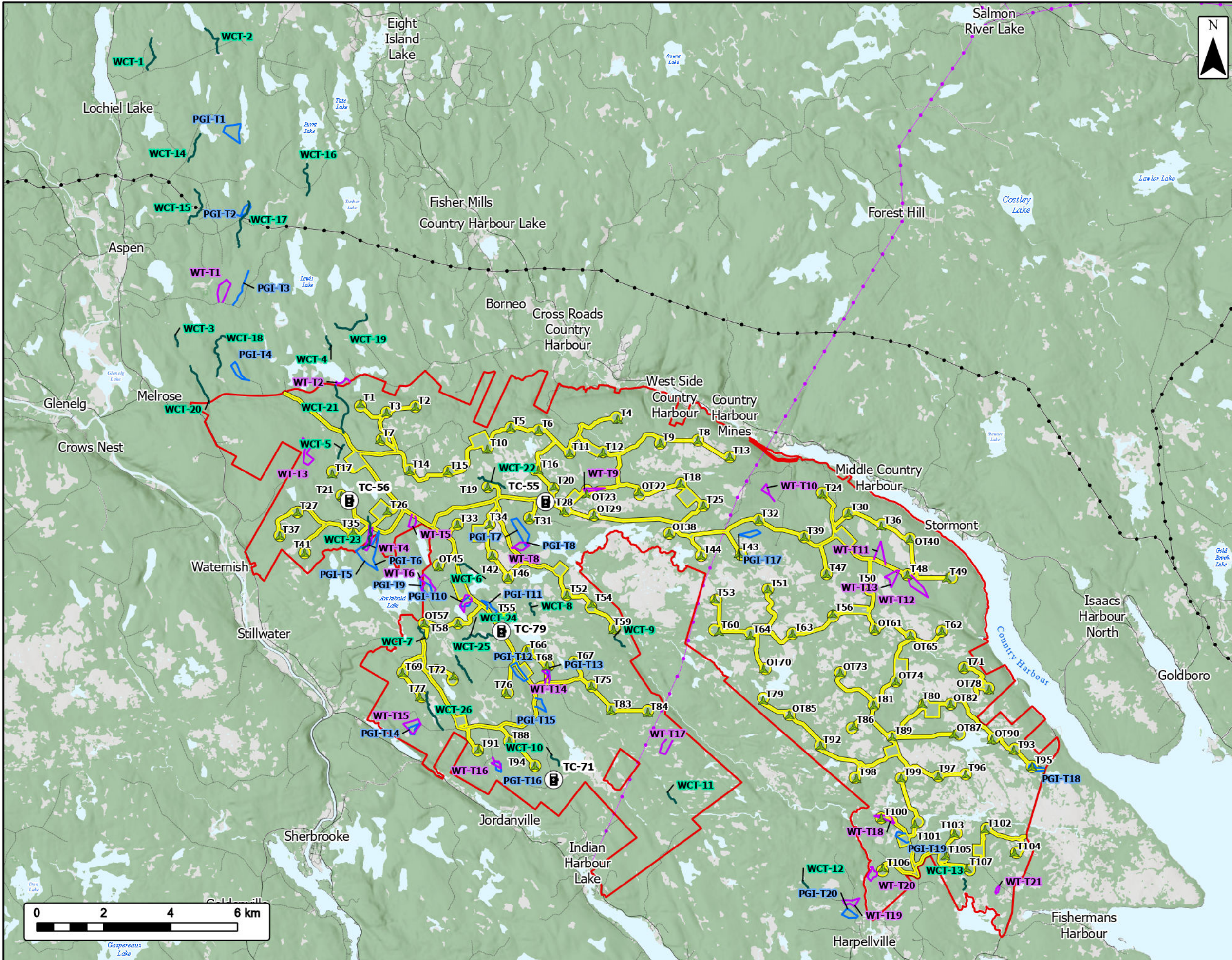
- Mapped Lakes and Rivers 



Coordinate System: NAD 1983 UTM Zone 20N
 Sources: Service Nova Scotia, Esri, NASA, NGA, USGS, GeoNOVA, SNSIS, NSNRR, ACCDC, IBA Canada, CNWL, HERE, Garmin, USGS

Date:	2026-06-11	Project #:	25-11682
Scale:	1:85,000	Drawing #:	10.6
Drawn By:	K. Wallace		
Checked By:	A. Doane		





Harbour Hills Wind Project

Terrestrial Fauna Methodology



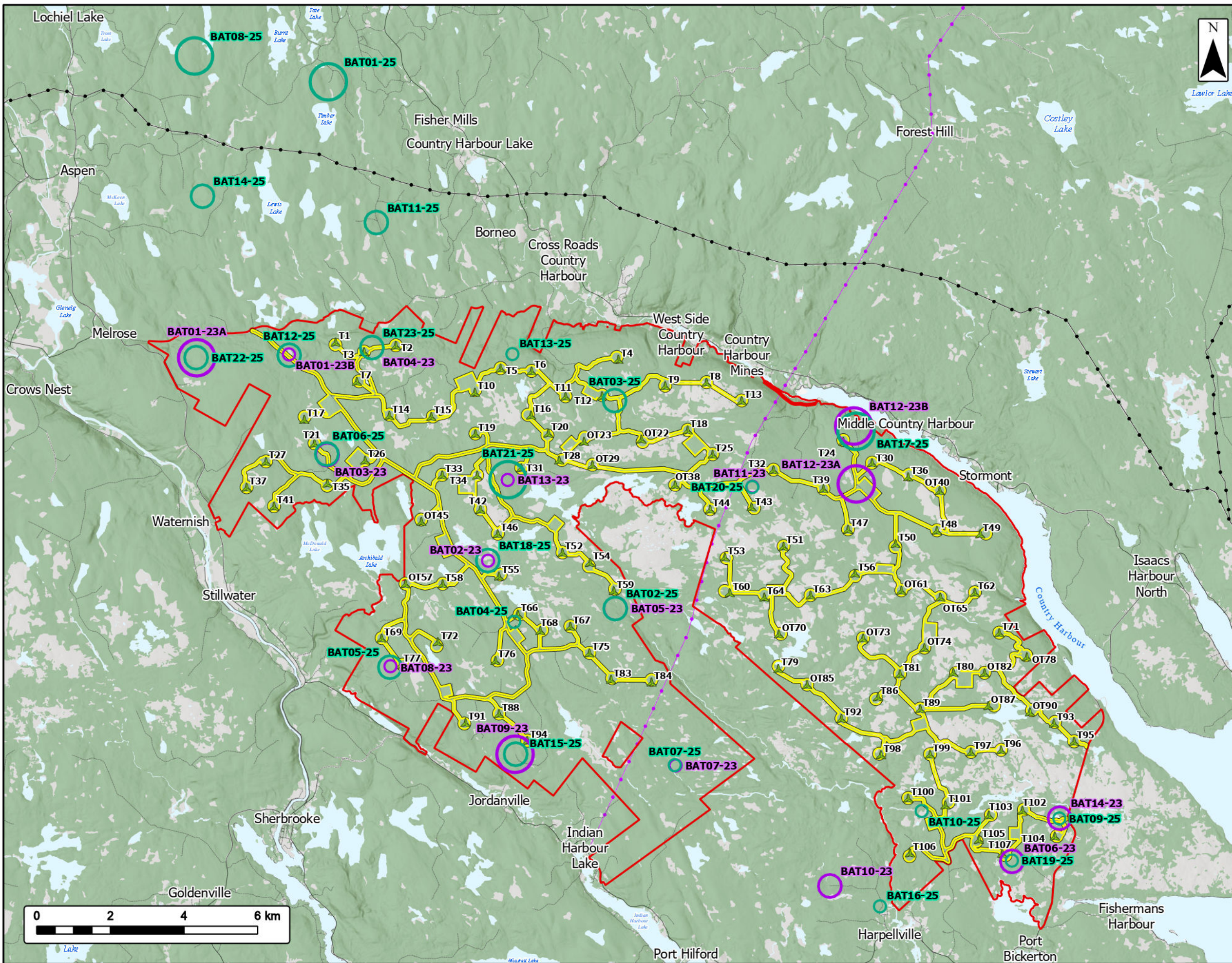
Study Area	
Assessment Area	
Proposed Turbine Locations	
Trail Camera Location	
PGI Transect	
Winter Tracking Transect	
Wood Turtle Transect	
Transportation	
Road	
Unpaved Road	
Utilities (Line)	
Existing Pipeline	
Existing Transmission Lines	
Water Features	
Mapped Lakes and Rivers	



Coordinate System: NAD 1983 UTM Zone 20N
 Sources: Service Nova Scotia, Esri, NASA, NGA, USGS, GeoNOVA, SNSIS, NSNRR, ACCDC, IBA Canada, CNWL, HERE, Garmin, USGS

Date:	2026-06-11	Project #:	25-11682
Scale:	1:110,000	Drawing #:	10.7
Drawn By:	K. Wallace		
Checked By:	A. Doane		





Harbour Hills Wind Project

Bat Detectors and Relative Recorded Activity



Study Area		Transportation	
Assessment Area		Road	
Proposed Turbine Locations		Unpaved Road	
Number of Bat Passes (2023 Detectors)	Small Medium Large	Utilities (Line)	
		Existing Pipeline	
Number of Bat Passes (2025 Detectors)	Small Medium Large	Existing Transmission Lines	
		Water Features	
		Mapped Lakes and Rivers	



Coordinate System: NAD 1983 UTM Zone 20N
 Sources: Service Nova Scotia, Esri, NASA, NGA, USGS, GeoNOVA, SNSIS, NSNRR, ACCDC, IBA Canada, CNWL, HERE, Garmin, USGS

Date:	2026-06-11	Project #:	25-11682
Scale:	1:100,000	Drawing #:	10.9
Drawn By:	K. Wallace		
Checked By:	A. Doane		

