

# Harbour Hills Wind Project

Project Overview



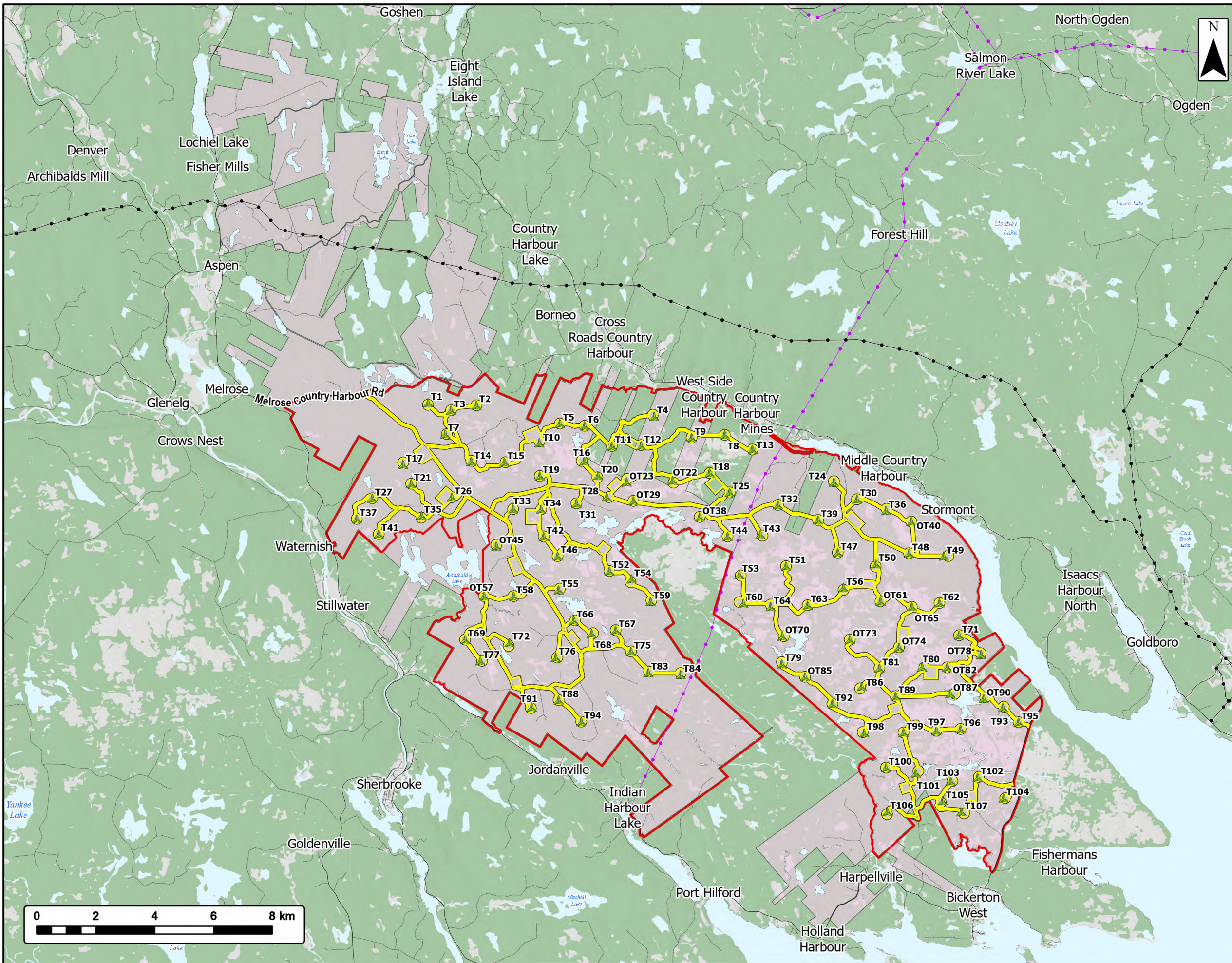
Study Area	
Assessment Area	
Laydown Area	
Proposed Turbine Locations	
Existing Road to be Upgraded	
Proposed New Road	
<b>Transportation</b>	
Road	
Unpaved Road	
<b>Utilities (Line)</b>	
Existing Pipeline	
Existing Transmission Lines	
<b>Water Features</b>	
Mapped Lakes and Rivers	



Coordinate System: NAD 1983 UTM Zone 20N  
 Sources: Service Nova Scotia, Esri, NASA, NGA, USGS, GeoNOVA, SNSIS, NSNRR, ACCDC, IBA Canada, CNWI, HERE, Garmin, USGS

Date:	2026-06-15	Project #:	25-11682
Scale:	1:85,000	Drawing #:	<b>2.1</b>
Drawn By:	K. Wallace		
Checked By:	A. Doane		





# Harbour Hills Wind Project

MOU Lands

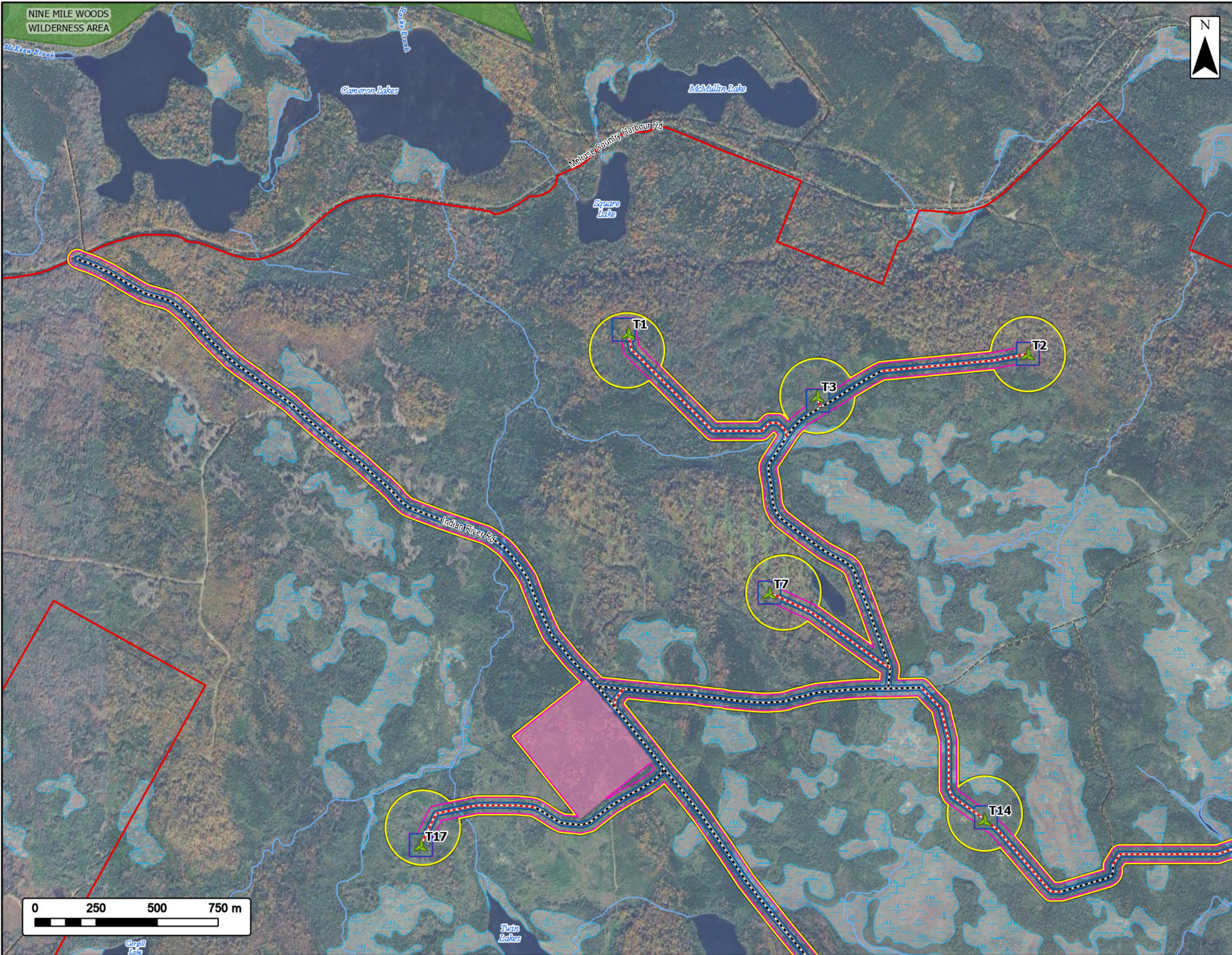
- Study Area
- Assessment Area
- Memorandum of Understanding (MOU) Land
- Proposed Turbine Locations
- Transportation**
- Road
- Unpaved Road
- Utilities (Line)**
- Existing Pipeline
- Existing Transmission Lines
- Water Features**
- Mapped Lakes and Rivers



Coordinate System: NAD 1983 UTM Zone 20N  
Sources: Esri, NASA, NGA, USGS, GeoNOVA, SNSIS, NSNRR, ACCDC, IBA Canada, CNWI, HERE, Garmin, USGS

Date: 2026-06-16	Project #: 25-11682
Scale: 1:125,000	<h1>3.1</h1>
Drawn By: K. Wallace	
Checked By: A. Doane	



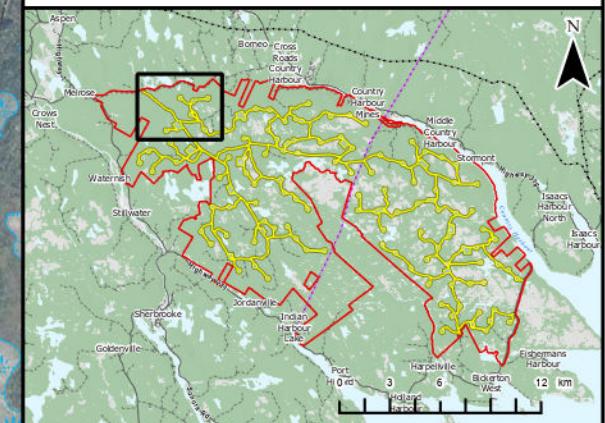


# Harbour Hills Wind Project

Project Infrastructure



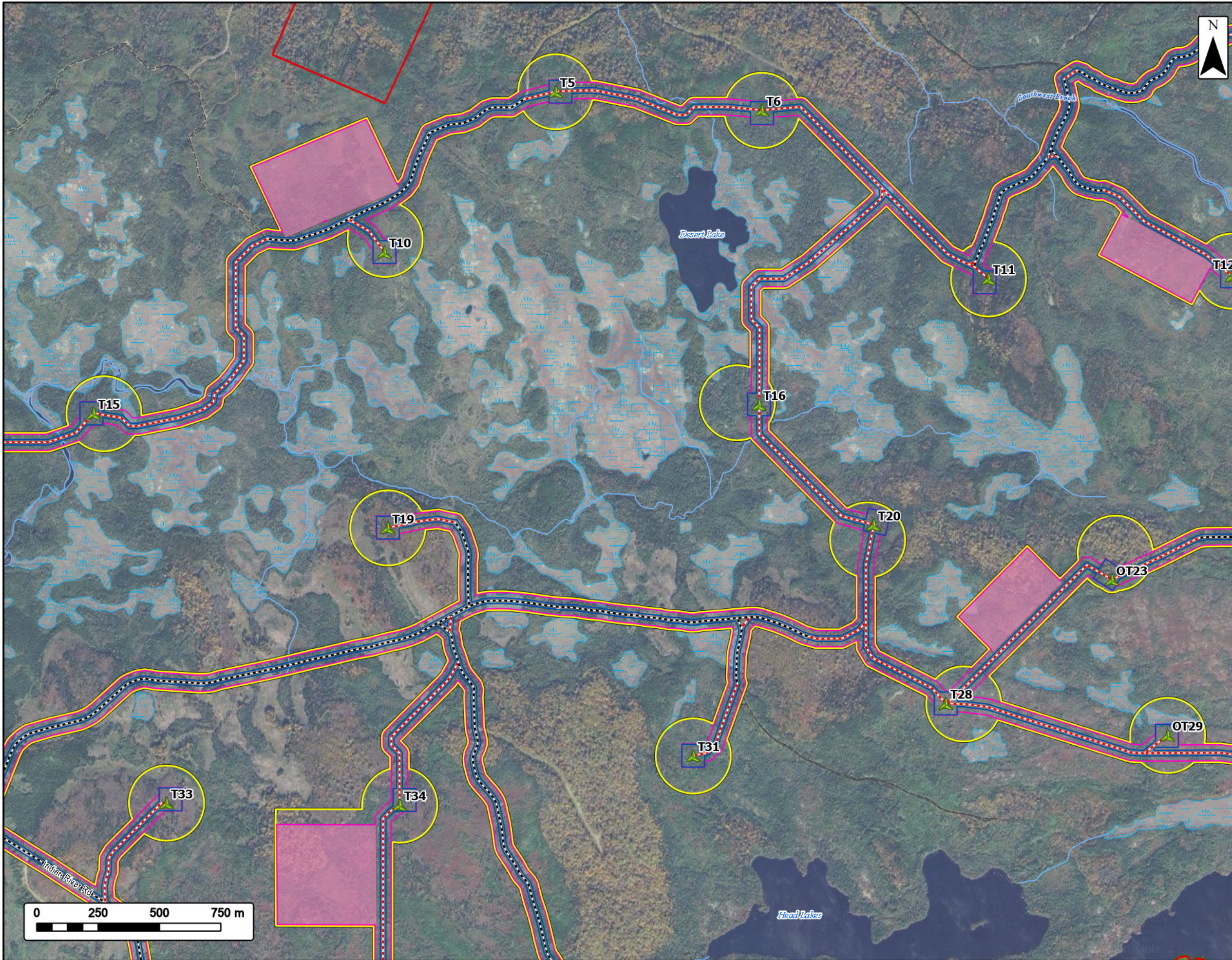
Study Area	
Assessment Area	
Clearing Footprint	
Project Footprint	
Laydown Area	
Proposed Turbine Locations	
Existing Road to be Upgraded	
Proposed New Road	
<b>NS Parks and Protected Areas</b>	
Wilderness Area	
<b>Transportation</b>	
Unpaved Road	
<b>Water Features</b>	
Mapped Watercourses	
Mapped Wetlands	



Coordinate System: NAD 1983 UTM Zone 20N  
 Sources: Esri, CGIAR, USGS, © OpenStreetMap (and) contributors, CC-BY-SA, GeoNOVA, SNSIS, NSNRR, ACCDC, IBA Canada, CNW, HERE, Garmin, USGS

Date:	2026-06-12	Project #:	25-11682
Scale:	1:15,000	Drawing #:	<b>3.2A</b>
Drawn By:	K. Wallace		
Checked By:	A. Doane		



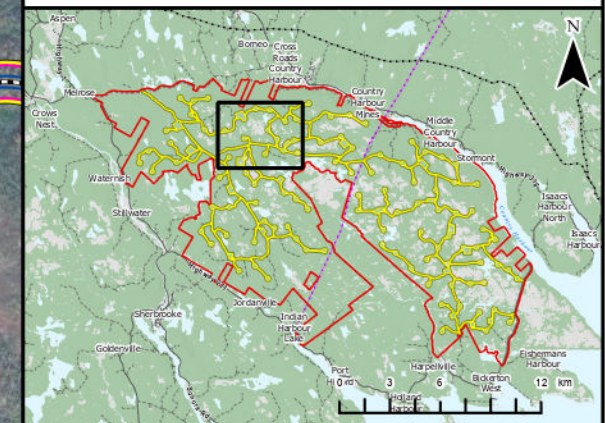


# Harbour Hills Wind Project

Project Infrastructure



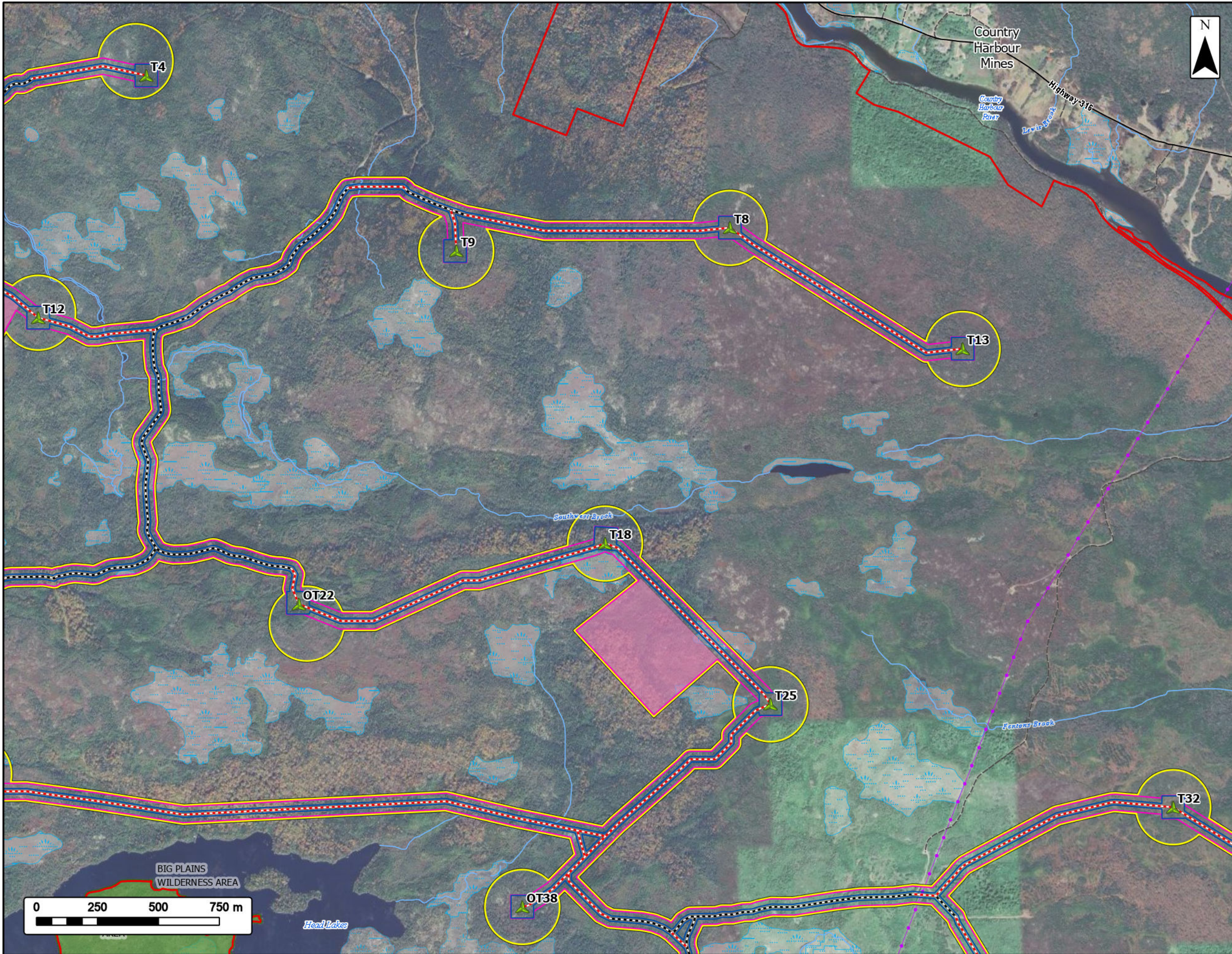
Study Area	
Assessment Area	
Clearing Footprint	
Project Footprint	
Laydown Area	
Proposed Turbine Locations	
Existing Road to be Upgraded	
Proposed New Road	
<b>NS Parks and Protected Areas</b>	
Wilderness Area	
<b>Transportation</b>	
Unpaved Road	
<b>Water Features</b>	
Mapped Watercourses	
Mapped Wetlands	



Coordinate System: NAD 1983 UTM Zone 20N  
 Sources: Esri, CGIAR, USGS, © OpenStreetMap (and) contributors, CC-BY-SA, GeoNOVA, SNSIS, NSNRR, ACCDC, IBA Canada, CNW, HERE, Garmin, USGS

Date:	2026-06-12	Project #:	25-11682
Scale:	1:15,000	Drawing #:	<b>3.2B</b>
Drawn By:	K. Wallace		
Checked By:	A. Doane		



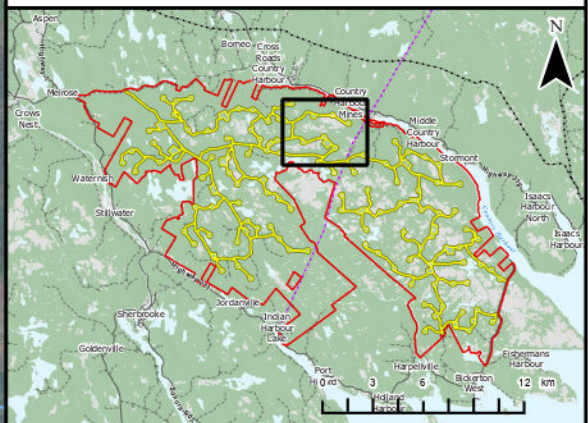


# Harbour Hills Wind Project

Project Infrastructure



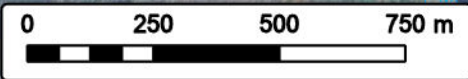
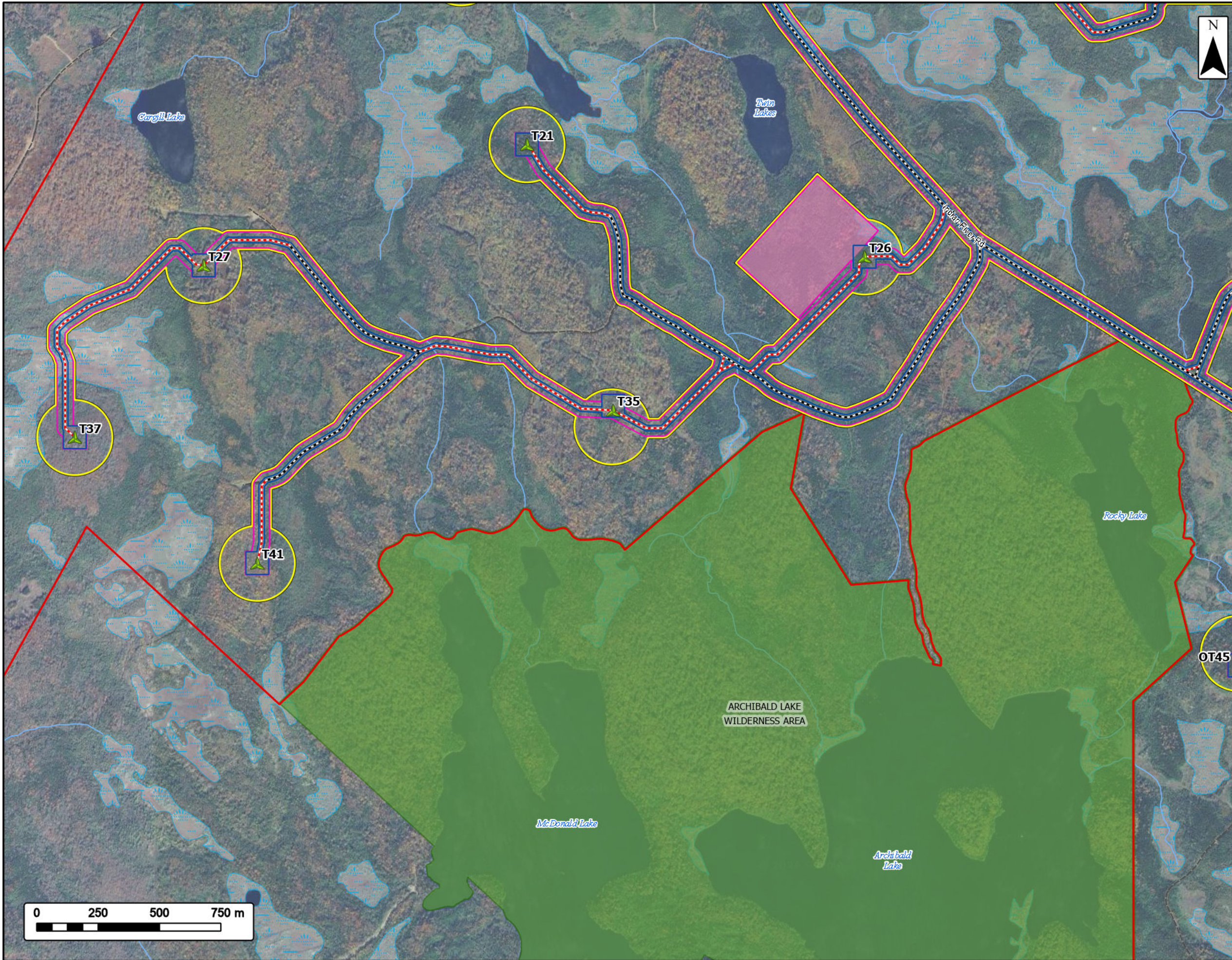
Study Area	
Assessment Area	
Clearing Footprint	
Project Footprint	
Laydown Area	
Proposed Turbine Locations	
Existing Road to be Upgraded	
Proposed New Road	
<b>NS Parks and Protected Areas</b>	
Wilderness Area	
<b>Transportation</b>	
Road	
Unpaved Road	
<b>Utilities (Line)</b>	
Existing Transmission Lines	
<b>Water Features</b>	
Mapped Watercourses	
Mapped Wetlands	



Coordinate System: NAD 1983 UTM Zone 20N  
 Sources: Esri, CGIAR, USGS, © OpenStreetMap (and) contributors, CC-BY-SA, GeoNOVA, SNSIS, NSNRR, ACCDC, IBA Canada, CNW, HERE, Garmin, USGS

Date:	2026-06-12	Project #:	25-11682
Scale:	1:15,000	Drawing #:	<b>3.2C</b>
Drawn By:	K. Wallace		
Checked By:	A. Doane		



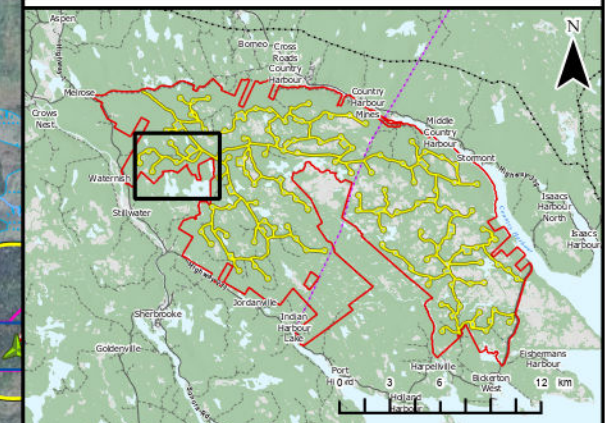


# Harbour Hills Wind Project

Project Infrastructure



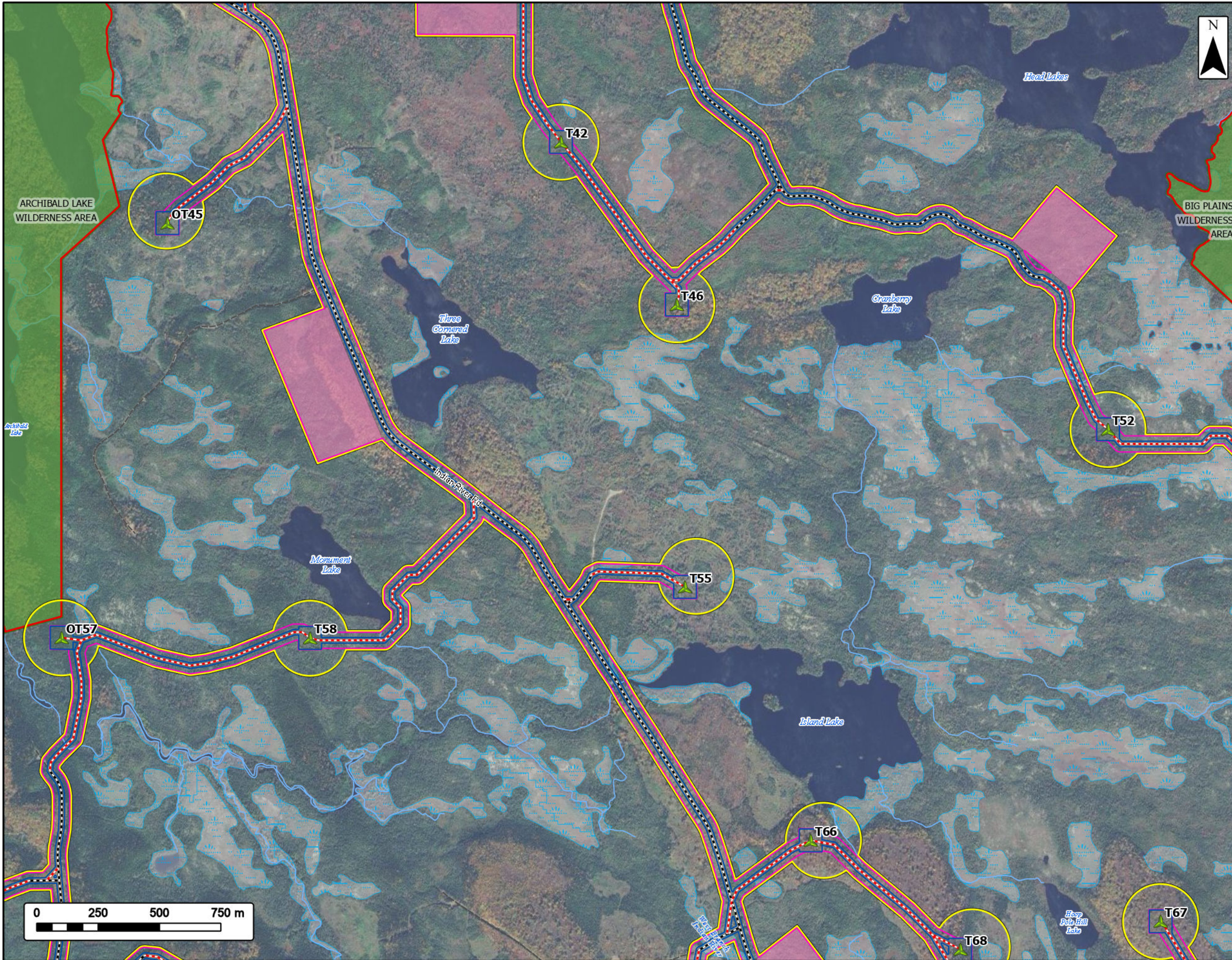
Study Area	
Assessment Area	
Clearing Footprint	
Project Footprint	
Laydown Area	
Proposed Turbine Locations	
Existing Road to be Upgraded	
Proposed New Road	
<b>NS Parks and Protected Areas</b>	
Wilderness Area	
<b>Transportation</b>	
Unpaved Road	
<b>Water Features</b>	
Mapped Watercourses	
Mapped Wetlands	



Coordinate System: NAD 1983 UTM Zone 20N  
 Sources: Esri, CGIAR, USGS, © OpenStreetMap (and) contributors, CC-BY-SA, GeoNOVA, SNSIS, NSNRR, ACCDC, IBA Canada, CNW, HERE, Garmin, USGS

Date:	2026-06-12	Project #:	25-11682
Scale:	1:15,000	Drawing #:	<b>3.2D</b>
Drawn By:	K. Wallace		
Checked By:	A. Doane		



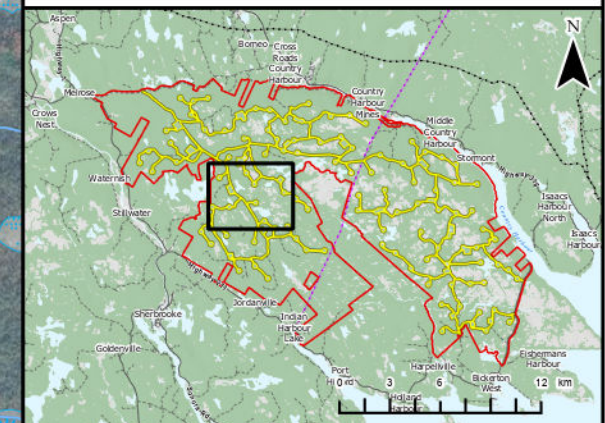


# Harbour Hills Wind Project

Project Infrastructure



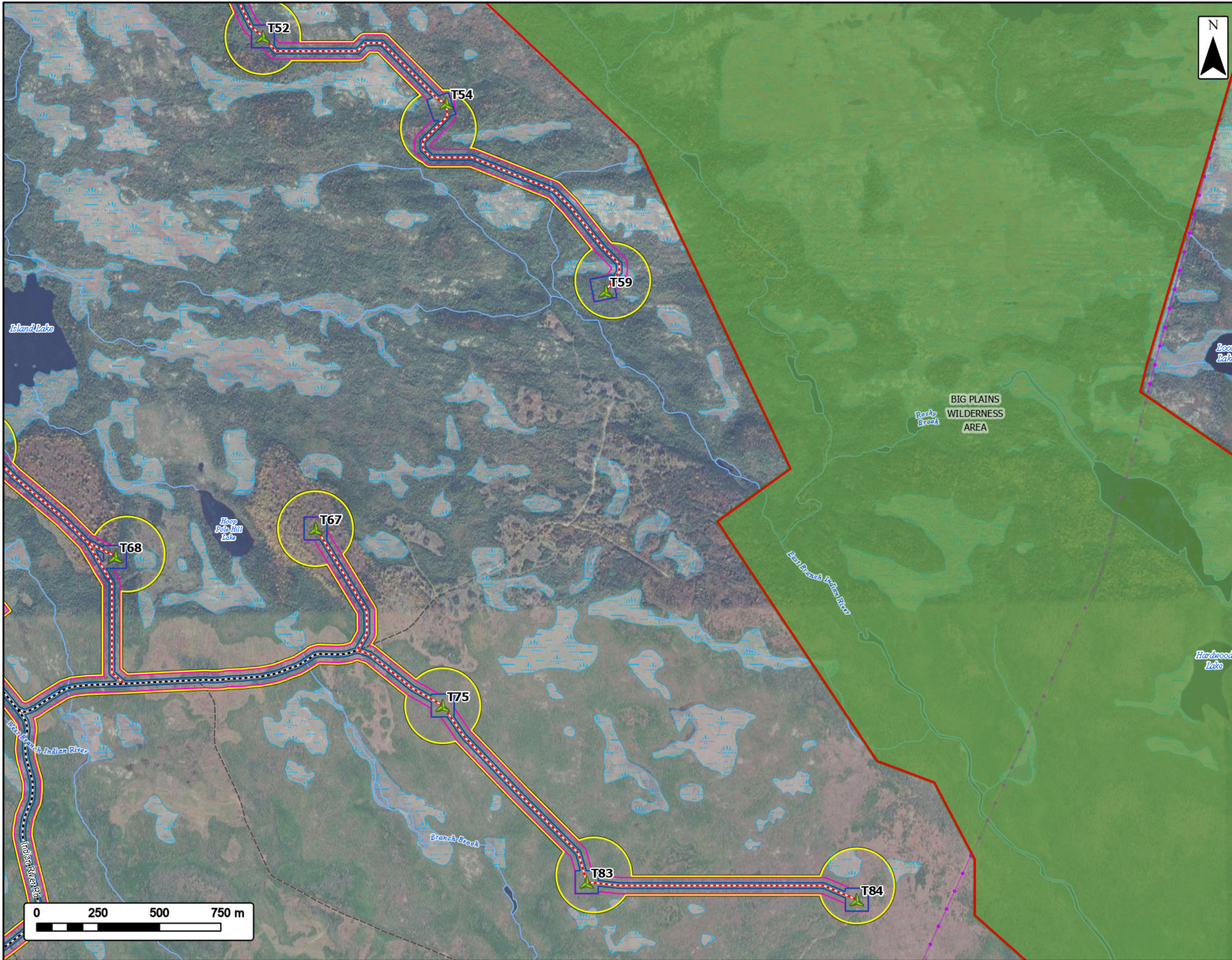
Study Area	
Assessment Area	
Clearing Footprint	
Project Footprint	
Laydown Area	
Proposed Turbine Locations	
Existing Road to be Upgraded	
Proposed New Road	
<b>NS Parks and Protected Areas</b>	
Wilderness Area	
<b>Transportation</b>	
Unpaved Road	
<b>Water Features</b>	
Mapped Watercourses	
Mapped Wetlands	



Coordinate System: NAD 1983 UTM Zone 20N  
 Sources: Esri, CGIAR, USGS, © OpenStreetMap (and) contributors, CC-BY-SA, GeoNOVA, SNSIS, NSNRR, ACCDC, IBA Canada, CNW, HERE, Garmin, USGS

Date:	2026-06-12	Project #:	25-11682
Scale:	1:15,000	Drawing #:	<b>3.2E</b>
Drawn By:	K. Wallace		
Checked By:	A. Doane		



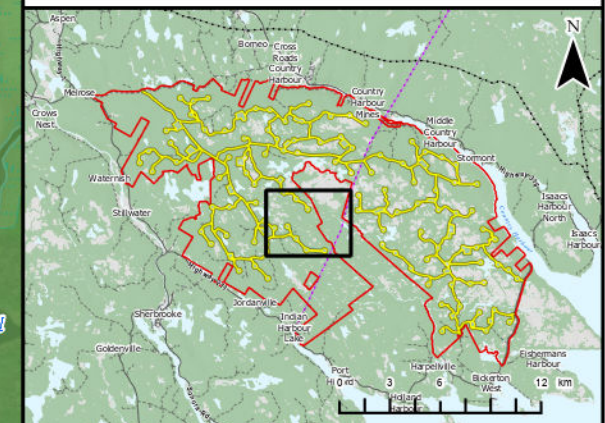


# Harbour Hills Wind Project

Project Infrastructure



Study Area	
Assessment Area	
Clearing Footprint	
Project Footprint	
Laydown Area	
Proposed Turbine Locations	
Existing Road to be Upgraded	
Proposed New Road	
<b>NS Parks and Protected Areas</b>	
Wilderness Area	
<b>Transportation</b>	
Unpaved Road	
<b>Utilities (Line)</b>	
Existing Transmission Lines	
<b>Water Features</b>	
Mapped Watercourses	
Mapped Wetlands	



Coordinate System: NAD 1983 UTM Zone 20N  
 Sources: Esri, CGIAR, USGS, © OpenStreetMap (and) contributors, CC-BY-SA, GeoNOVA, SNSIS, NSNRR, ACCDC, IBA Canada, CNW, HERE, Garmin, USGS

Date:	2026-06-12	Project #:	25-11682
Scale:	1:15,000	Drawing #:	<b>3.2F</b>
Drawn By:	K. Wallace		
Checked By:	A. Doane		

