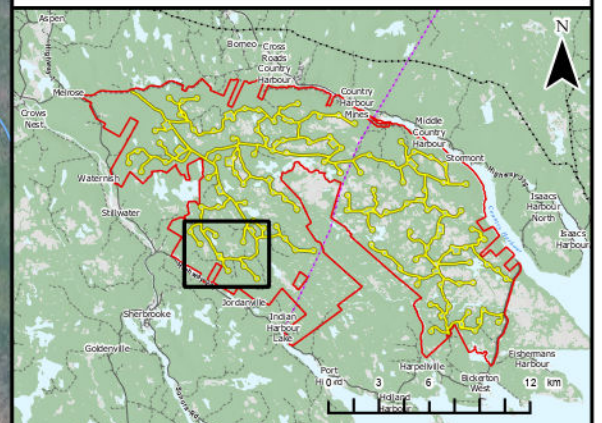


Harbour Hills Wind Project
Project Infrastructure

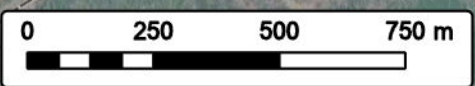
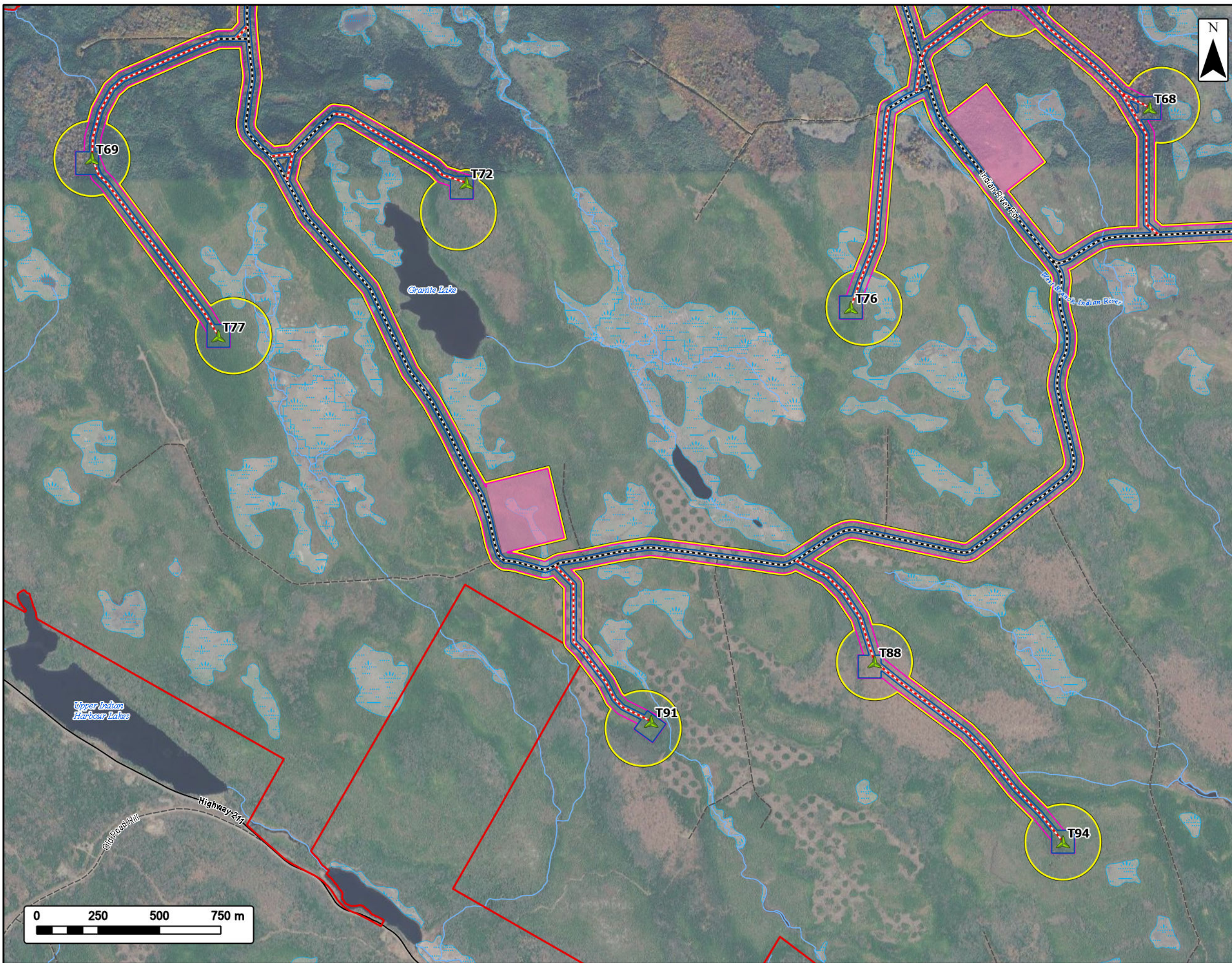


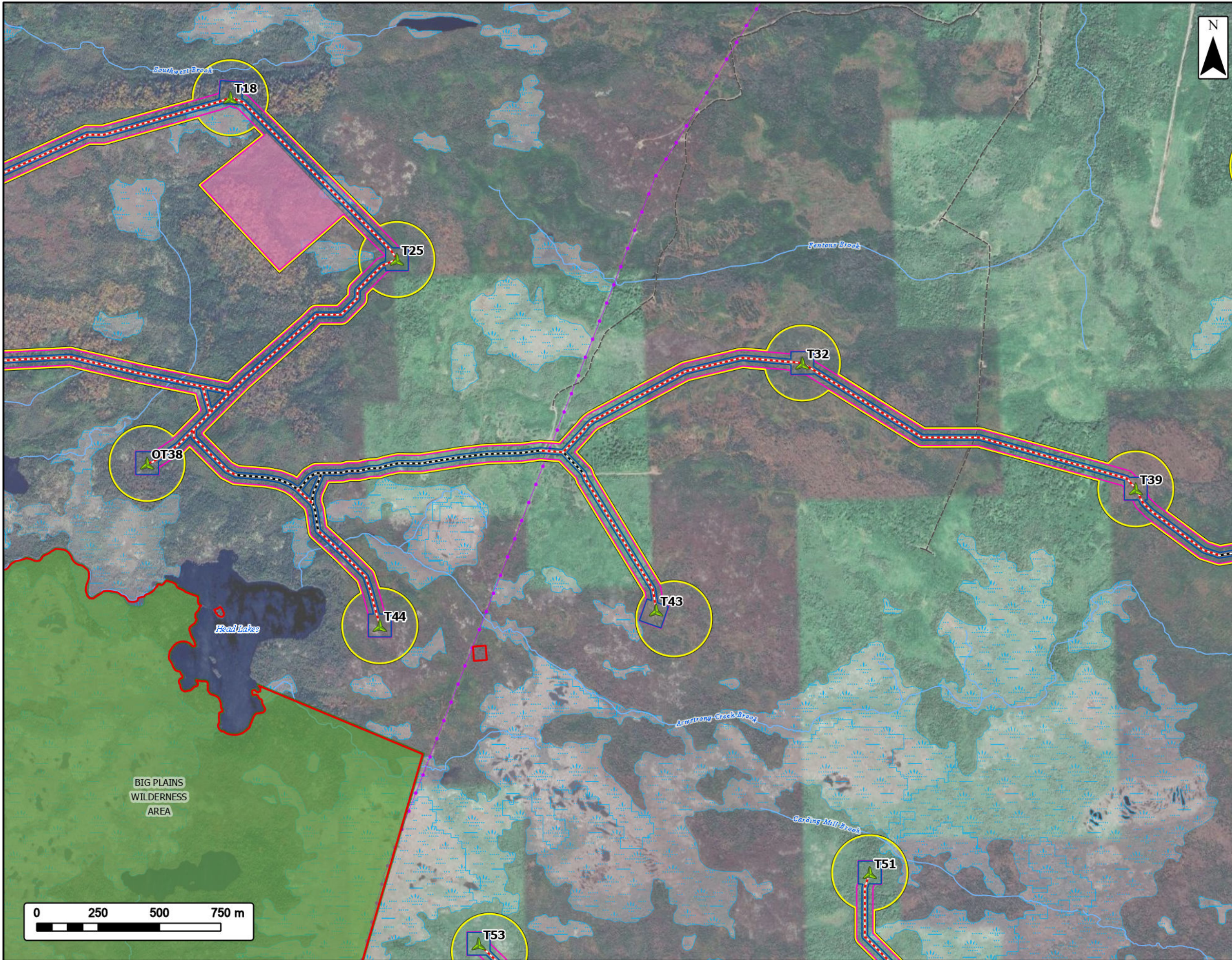
Study Area	
Assessment Area	
Clearing Footprint	
Project Footprint	
Laydown Area	
Proposed Turbine Locations	
Existing Road to be Upgraded	
Proposed New Road	
Transportation	
Road	
Unpaved Road	
Water Features	
Mapped Watercourses	
Mapped Wetlands	



Coordinate System: NAD 1983 UTM Zone 20N
Sources: Esri, CGIAR, USGS, © OpenStreetMap (and) contributors, CC-BY-SA, GeoNOVA, SNSIS, NSNRR, ACCDC, IBA Canada, CNW, HERE, Garmin, USGS

Date:	2026-06-12	Project #:	25-11682
Scale:	1:15,000	Drawing #:	3.2G
Drawn By:	K. Wallace		
Checked By:	A. Doane		



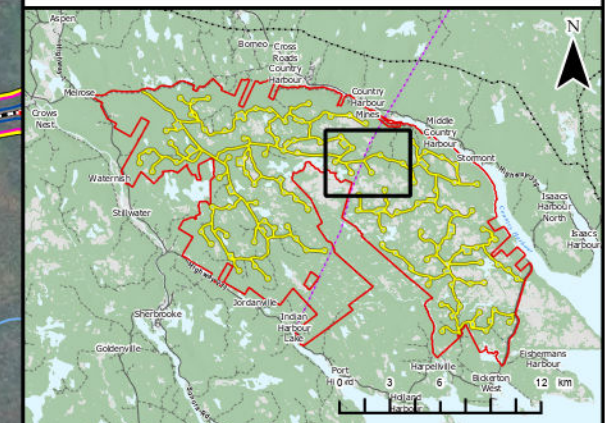


Harbour Hills Wind Project

Project Infrastructure



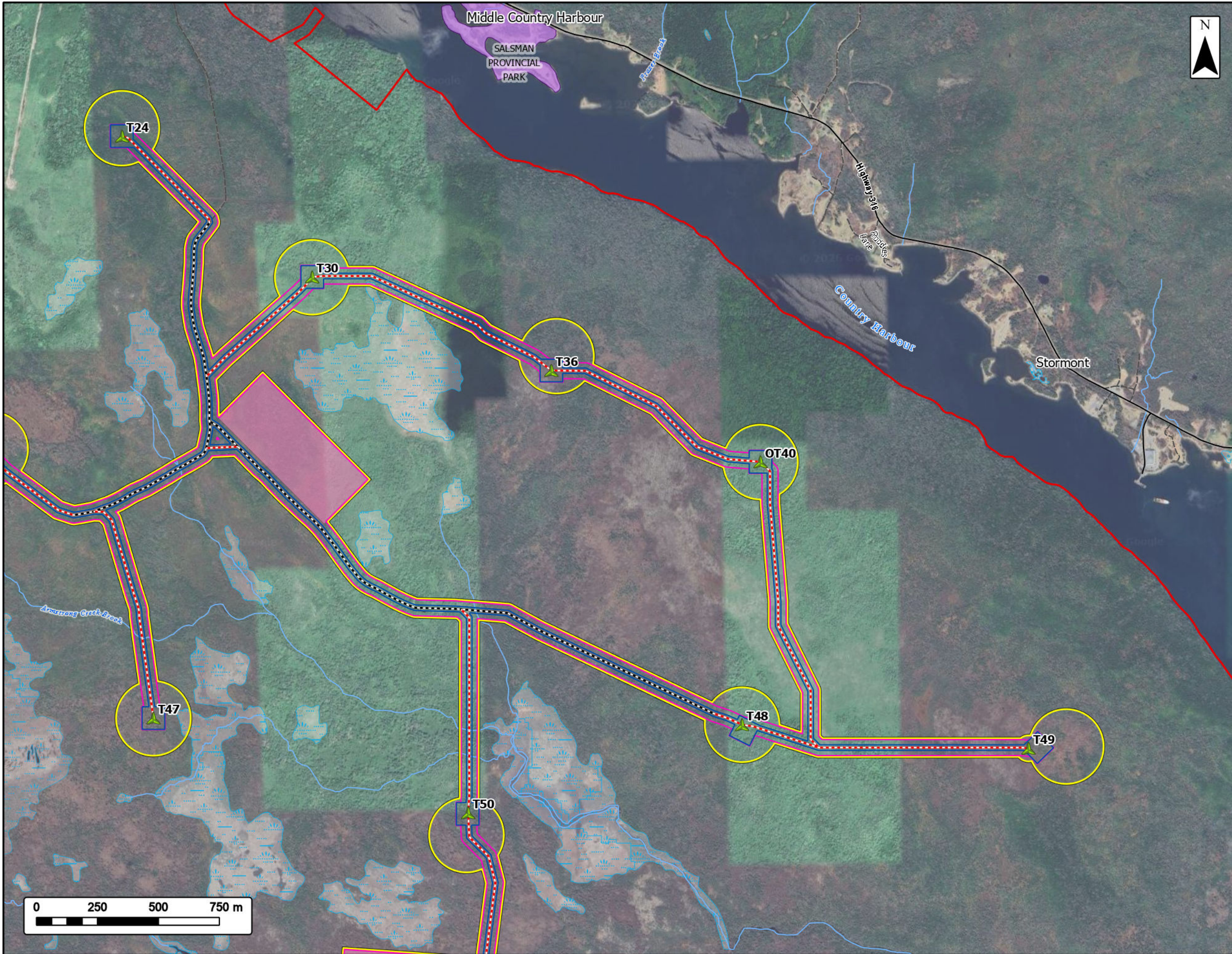
Study Area	
Assessment Area	
Clearing Footprint	
Project Footprint	
Laydown Area	
Proposed Turbine Locations	
Existing Road to be Upgraded	
Proposed New Road	
NS Parks and Protected Areas	
Wilderness Area	
Transportation	
Unpaved Road	
Utilities (Line)	
Existing Transmission Lines	
Water Features	
Mapped Watercourses	
Mapped Wetlands	



Coordinate System: NAD 1983 UTM Zone 20N
 Sources: Esri, CGIAR, USGS, © OpenStreetMap (and) contributors, CC-BY-SA, GeoNOVA, SNSIS, NSNRR, ACCDC, IBA Canada, CNW, HERE, Garmin, USGS

Date:	2026-06-12	Project #:	25-11682
Scale:	1:15,000	Drawing #:	3.2H
Drawn By:	K. Wallace		
Checked By:	A. Doane		



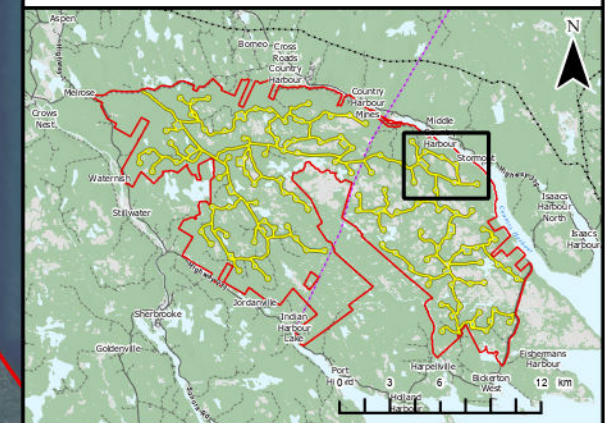


Harbour Hills Wind Project

Project Infrastructure



Study Area	
Assessment Area	
Clearing Footprint	
Project Footprint	
Laydown Area	
Proposed Turbine Locations	
Existing Road to be Upgraded	
Proposed New Road	
NS Parks and Protected Areas	
Provincial Park	
Transportation	
Road	
Unpaved Road	
Water Features	
Mapped Watercourses	
Mapped Wetlands	



Coordinate System: NAD 1983 UTM Zone 20N
 Sources: Esri, CGIAR, USGS, © OpenStreetMap (and) contributors, CC-BY-SA, GeoNOVA, SNSIS, NSNRR, ACCDC, IBA Canada, CNW, HERE, Garmin, USGS

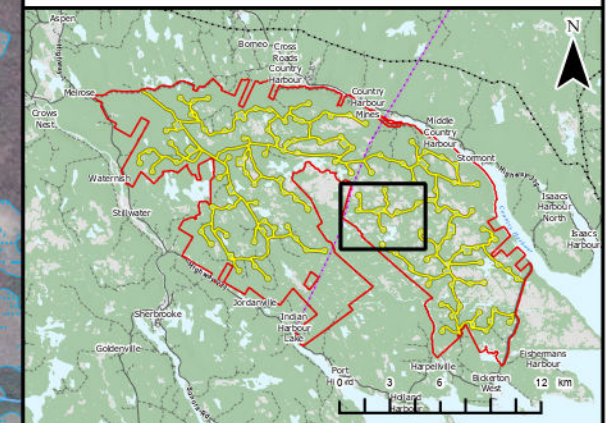
Date:	2026-06-12	Project #:	25-11682
Scale:	1:15,000	Drawing #:	3.21
Drawn By:	K. Wallace		
Checked By:	A. Doane		



Harbour Hills Wind Project
Project Infrastructure

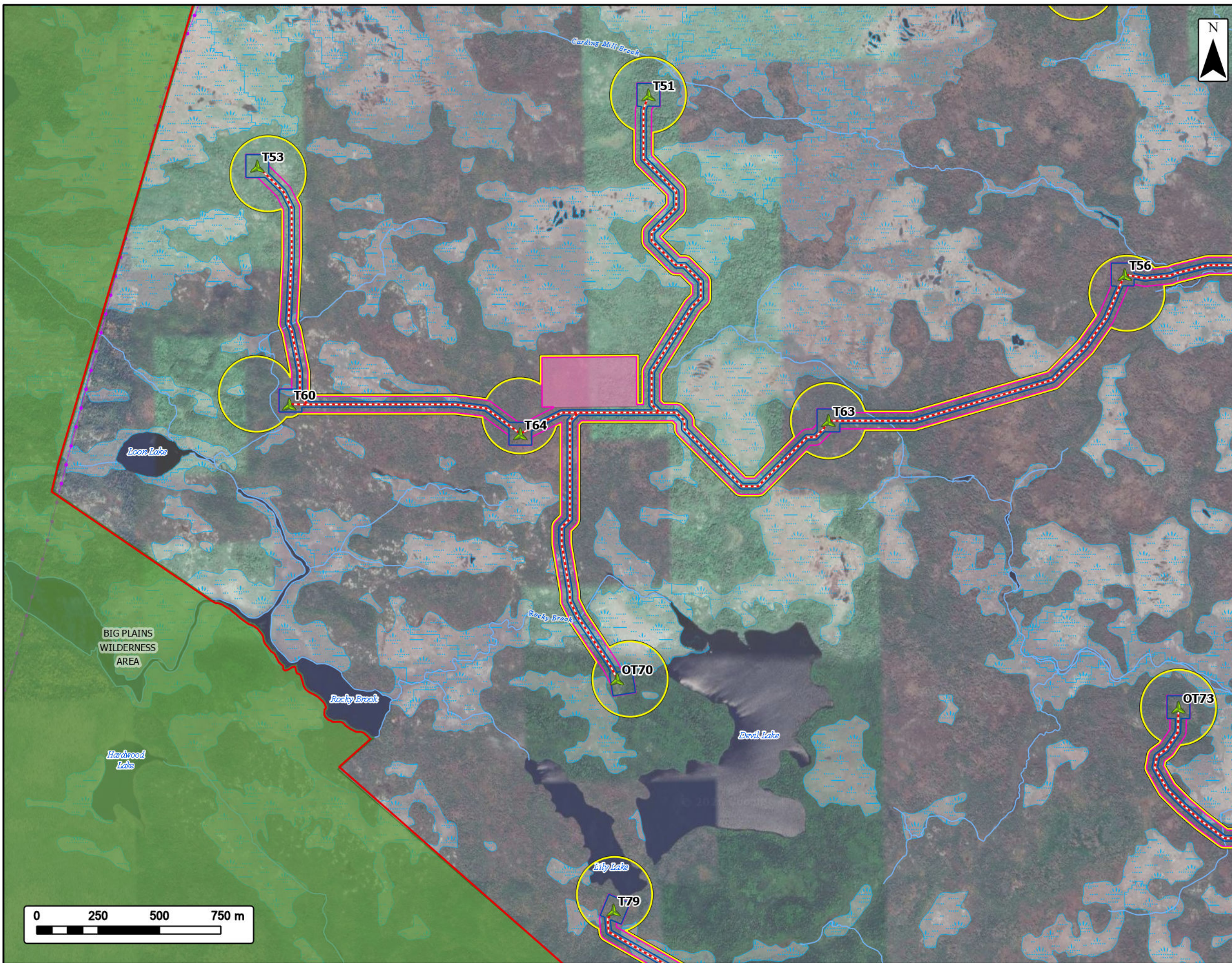


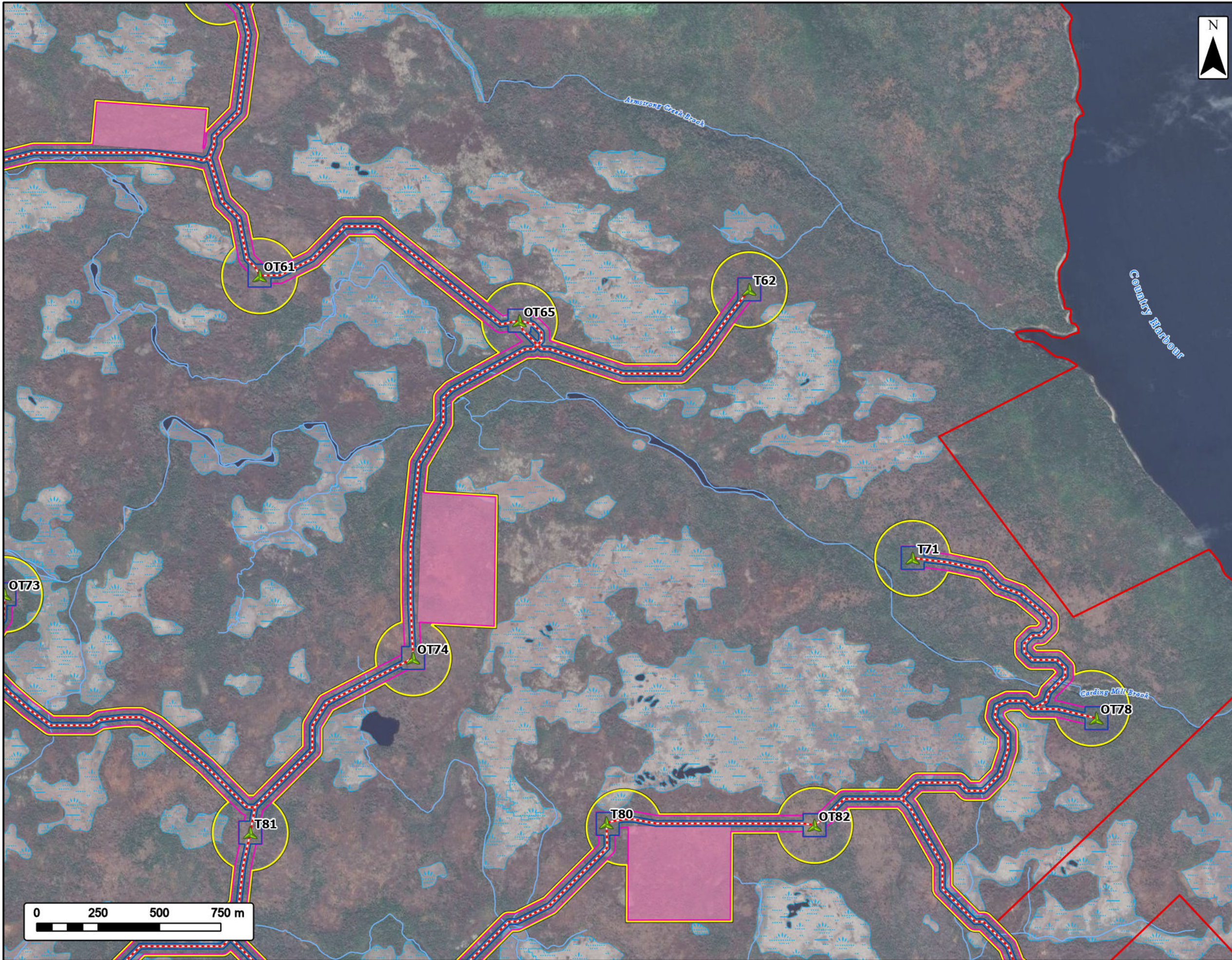
Study Area	
Assessment Area	
Clearing Footprint	
Project Footprint	
Laydown Area	
Proposed Turbine Locations	
Proposed New Road	
NS Parks and Protected Areas	
Wilderness Area	
Utilities (Line)	
Existing Transmission Lines	
Water Features	
Mapped Watercourses	
Mapped Wetlands	



Coordinate System: NAD 1983 UTM Zone 20N
Sources: Esri, CGIAR, USGS, © OpenStreetMap (and) contributors, CC-BY-SA, GeoNOVA, SNSIS, NSNRR, ACCDC, IBA Canada, CNW, HERE, Garmin, USGS

Date: 2026-06-12	Project #: 25-11682
Scale: 1:15,000	Drawing #: 3.2J
Drawn By: K. Wallace	
Checked By: A. Doane	



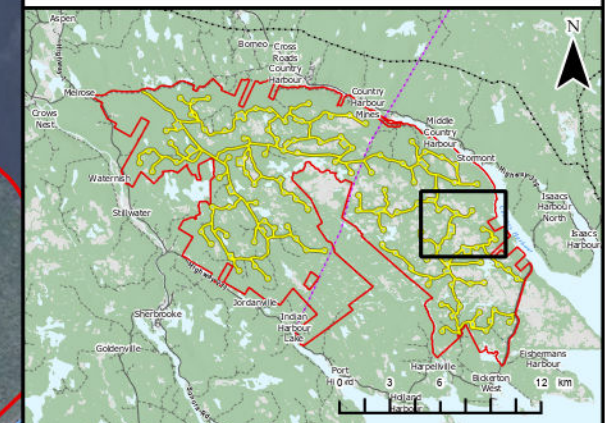


Harbour Hills Wind Project

Project Infrastructure



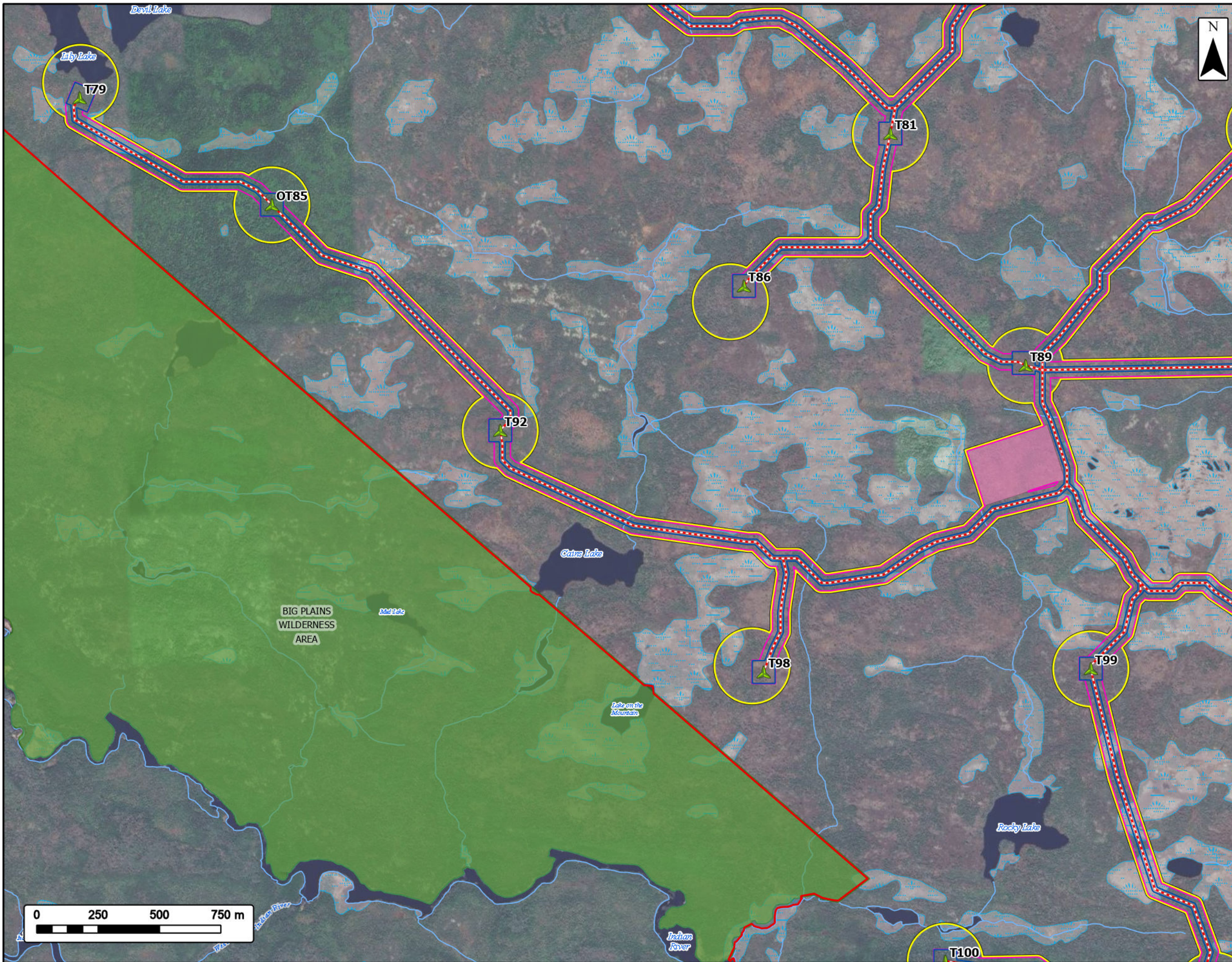
Study Area	
Assessment Area	
Clearing Footprint	
Project Footprint	
Laydown Area	
Proposed Turbine Locations	
Proposed New Road	
Water Features	
Mapped Watercourses	
Mapped Wetlands	



Coordinate System: NAD 1983 UTM Zone 20N
 Sources: Esri, CGIAR, USGS, © OpenStreetMap (and) contributors, CC-BY-SA, GeoNOVA, SNSIS, NSNRR, ACCDC, IBA Canada, CNW, HERE, Garmin, USGS

Date:	2026-06-12	Project #:	25-11682
Scale:	1:15,000	Drawing #:	3.2K
Drawn By:	K. Wallace		
Checked By:	A. Doane		



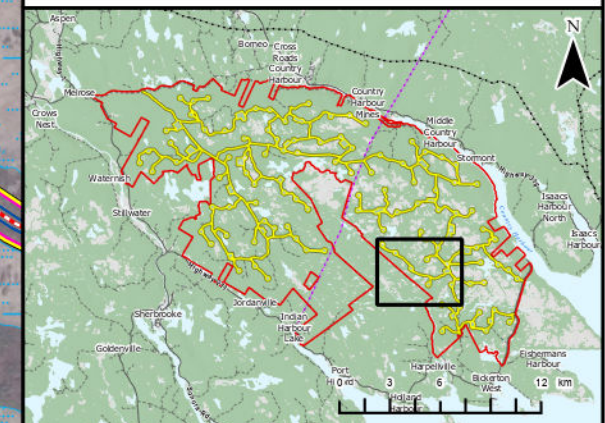


Harbour Hills Wind Project

Project Infrastructure



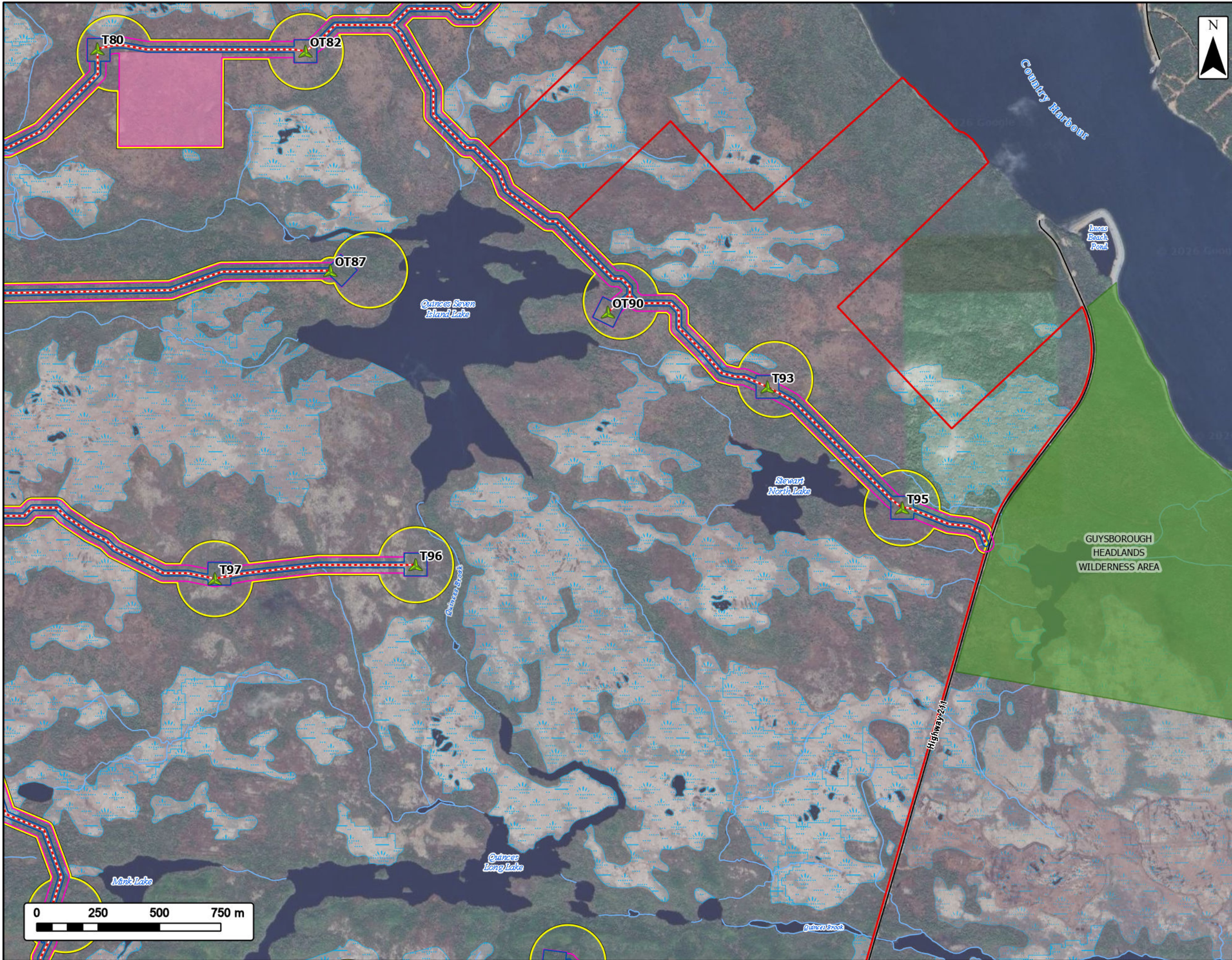
Study Area	
Assessment Area	
Clearing Footprint	
Project Footprint	
Laydown Area	
Proposed Turbine Locations	
Proposed New Road	
NS Parks and Protected Areas	
Wilderness Area	
Water Features	
Mapped Watercourses	
Mapped Wetlands	



Coordinate System: NAD 1983 UTM Zone 20N
 Sources: Esri, CGIAR, USGS, © OpenStreetMap (and) contributors, CC-BY-SA, GeoNOVA, SNSIS, NSNRR, ACCDC, IBA Canada, CNW, HERE, Garmin, USGS

Date:	2026-06-12	Project #:	25-11682
Scale:	1:15,000	Drawing #:	3.2L
Drawn By:	K. Wallace		
Checked By:	A. Doane		



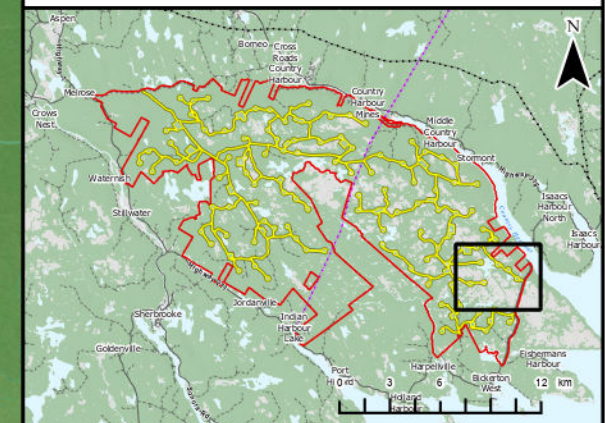


Harbour Hills Wind Project

Project Infrastructure



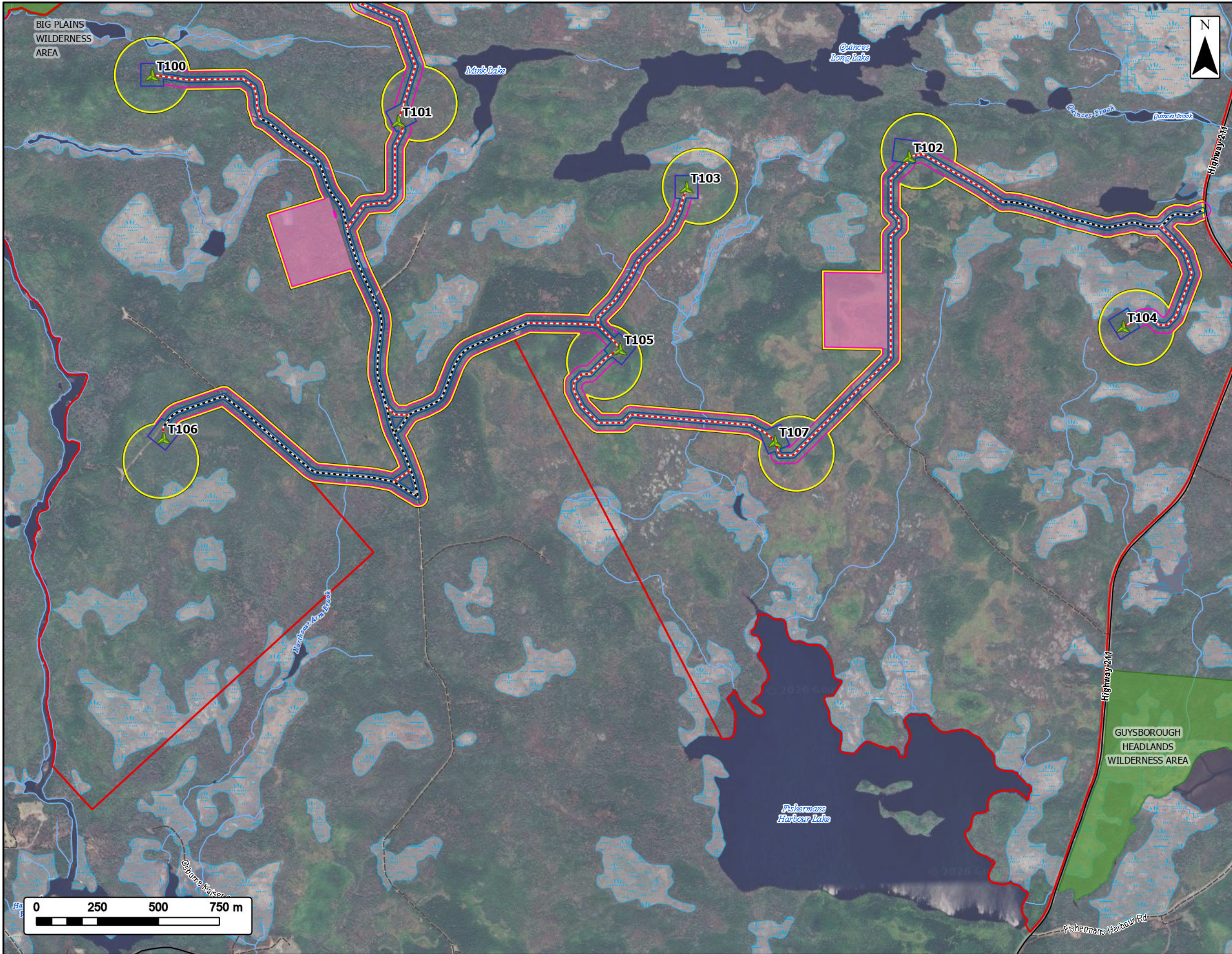
Study Area	
Assessment Area	
Clearing Footprint	
Project Footprint	
Laydown Area	
Proposed Turbine Locations	
Proposed New Road	
NS Parks and Protected Areas	
Wilderness Area	
Transportation	
Road	
Unpaved Road	
Water Features	
Mapped Watercourses	
Mapped Wetlands	



Coordinate System: NAD 1983 UTM Zone 20N
 Sources: Esri, CGIAR, USGS, © OpenStreetMap (and) contributors, CC-BY-SA, GeoNOVA, SNSIS, NSNRR, ACCDC, IBA Canada, CNW, HERE, Garmin, USGS

Date:	2026-06-12	Project #:	25-11682
Scale:	1:15,000	Drawing #:	3.2M
Drawn By:	K. Wallace		
Checked By:	A. Doane		



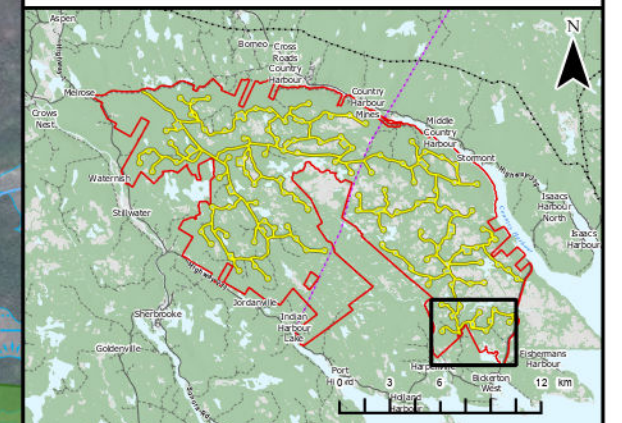


Harbour Hills Wind Project

Project Infrastructure



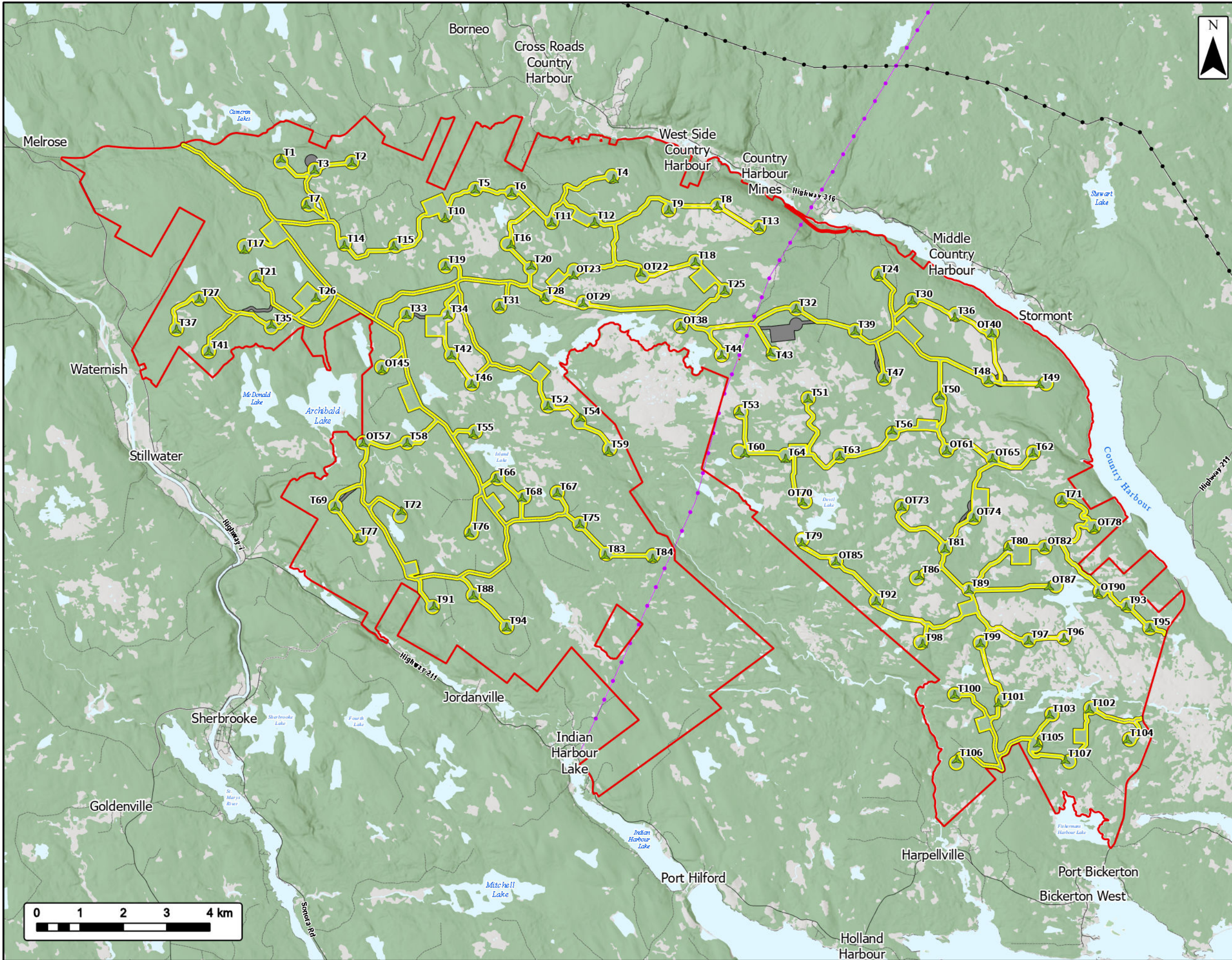
Study Area	
Assessment Area	
Clearing Footprint	
Project Footprint	
Laydown Area	
Proposed Turbine Locations	
Existing Road to be Upgraded	
Proposed New Road	
NS Parks and Protected Areas	
Wilderness Area	
Transportation	
Road	
Unpaved Road	
Water Features	
Mapped Watercourses	
Mapped Wetlands	



Coordinate System: NAD 1983 UTM Zone 20N
 Sources: Esri, CGIAR, USGS, © OpenStreetMap (and) contributors, CC-BY-SA, GeoNOVA, SNSIS, NSNRR, ACCDC, IBA Canada, CNW, HERE, Garmin, USGS

Date:	2026-06-12	Project #:	25-11682
Scale:	1:15,000	Drawing #:	3.2N
Drawn By:	K. Wallace		
Checked By:	A. Doane		





Harbour Hills Wind Project

Previously Assessed Areas



- Study Area
- Assessment Area
- Previously Assessed Areas
- Proposed Turbine Locations
- Transportation**
- Road
- Unpaved Road
- Utilities (Line)**
- Existing Pipeline
- Existing Transmission Lines
- Water Features**
- Mapped Lakes and Rivers



Coordinate System: NAD 1983 UTM Zone 20N
 Sources: Service Nova Scotia, Esri, NASA, NGA, USGS, GeoNOVA, SNSIS, NSNRR, ACCDC, IBA Canada, CNWL, HERE, Garmin, USGS

Date: 2026-06-11	Project #: 25-11682
Scale: 1:85,000	Drawing #:
Drawn By: K. Wallace	3.3
Checked By: A. Doane	

