

Harbour Hills Wind Project

Regional Overview

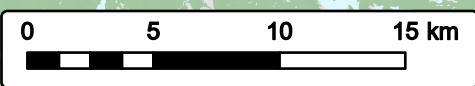


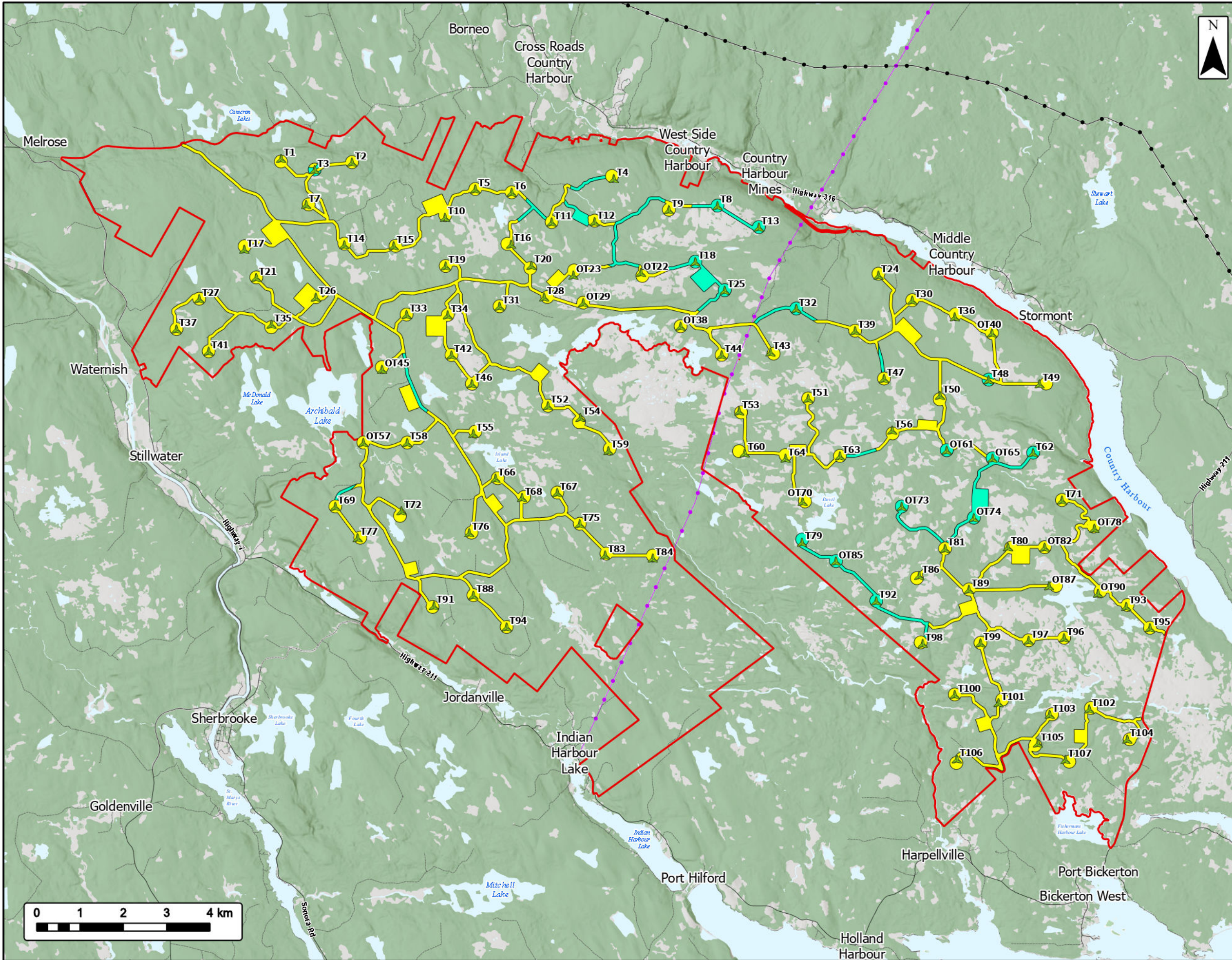
Study Area		Transportation		Trans-Canada Highway
Nearby Project Locations			Highway	
Mi'kmaq Community			Road	
Nearst Important Bird Area (IBA) - NS028			Unpaved Road	
NS Lands Proposed or Pending Protection		Utilities (Line)		Existing Pipeline
Provincial Park			Existing Transmission Lines	
Wilderness Area		Water Features		Mapped Lakes and Rivers
NS Parks and Protected Areas				
Nature Reserve				
Conservation Land				
Provincial Park				
Wilderness Area				



Coordinate System: NAD 1983 UTM Zone 20N
 Sources: Service Nova Scotia, Esri, NASA, NGA, USGS, GeoNOVA, SNSIS, NSNRR, ACCDC, IBA Canada, CNWI, HERE, Garmin, USGS

Date:	2026-06-12	Project #:	25-11682
Scale:	1:300,000	Drawing #:	3.4
Drawn By:	K. Wallace		
Checked By:	A. Doane		



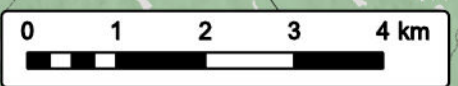


Harbour Hills Wind Project

Gap Areas



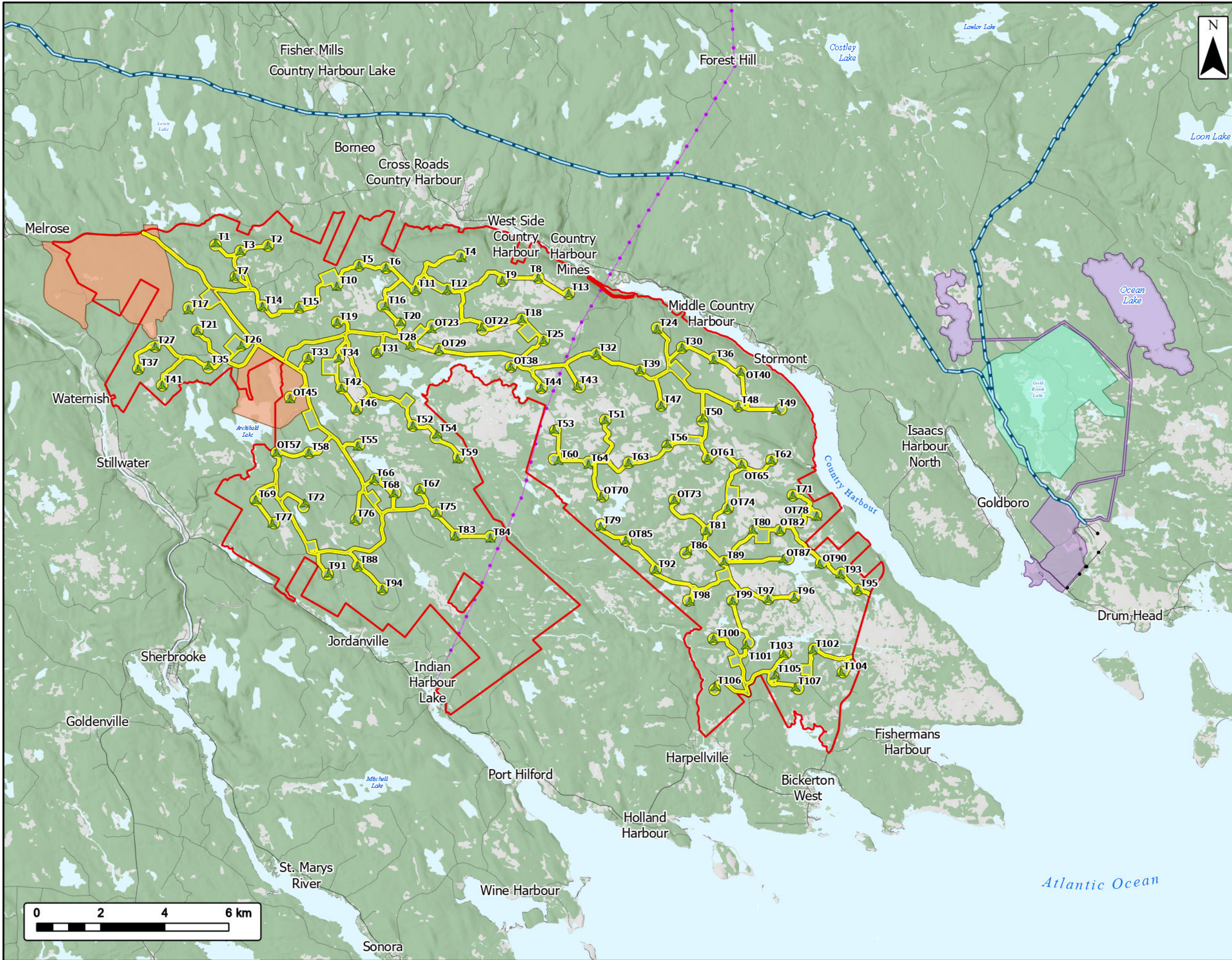
- Study Area
- Assessed Areas
- Gap Areas
- Proposed Turbine Locations
- Transportation**
- Road
- Unpaved Road
- Utilities (Line)**
- Existing Pipeline
- Existing Transmission Lines
- Water Features**
- Mapped Lakes and Rivers



Coordinate System: NAD 1983 UTM Zone 20N
 Sources: Service Nova Scotia, Esri, NASA, NGA, USGS, GeoNOVA, SNSIS, NSNRR, ACCDC, IBA Canada, CNWL, HERE, Garmin, USGS

Date: 2026-06-11	Project #: 25-11682
Scale: 1:85,000	<h1>4.1</h1>
Drawn By: M. Partridge	
Checked By: A. Doane	





Harbour Hills Wind Project

Nearby Industrial Users



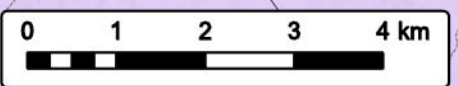
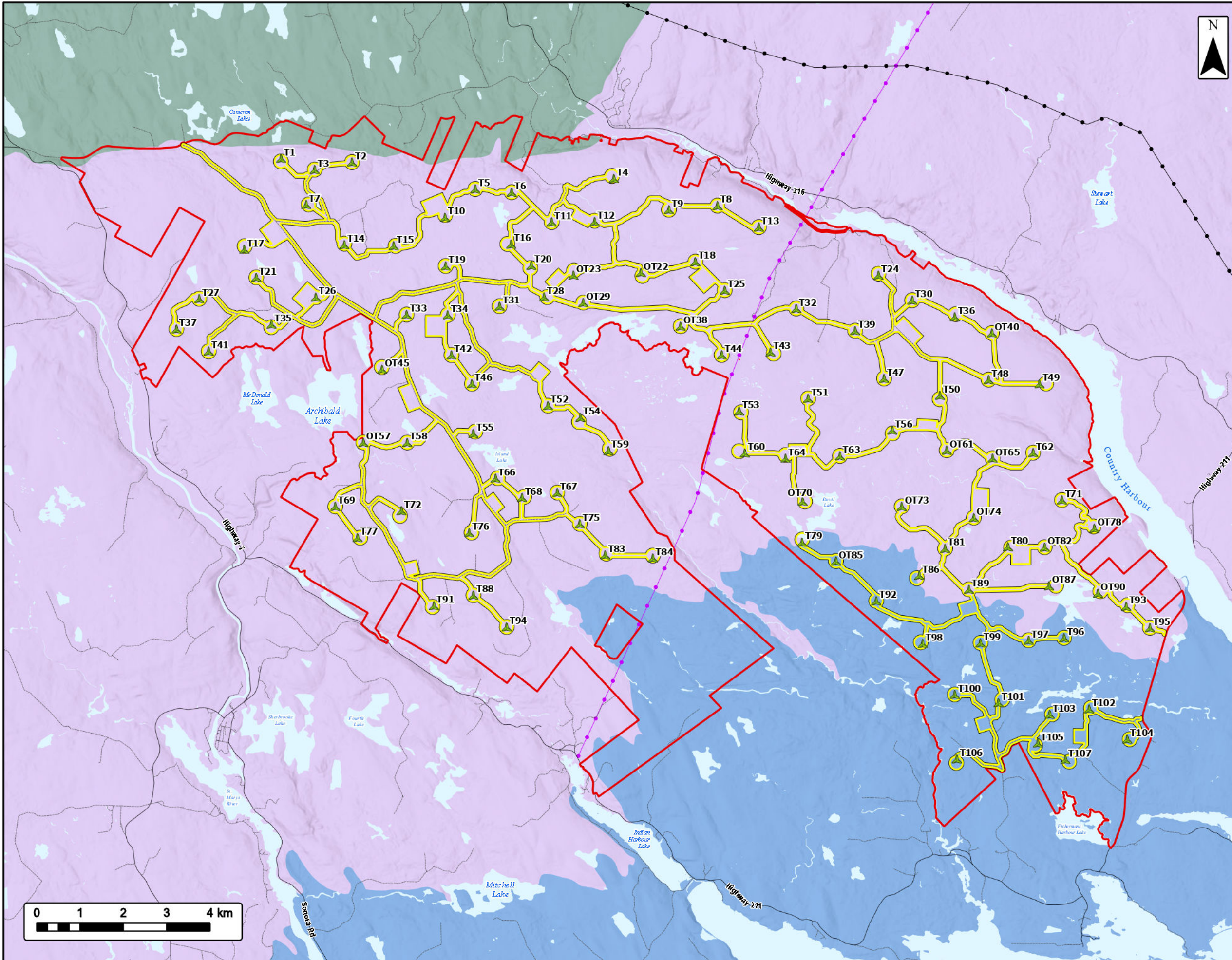
- Study Area
- Assessment Area
- Proposed Turbine Locations
- Maritimes & Northeast Pipeline
- Approximate Cochrane Hill Project Area
- Goldboro Gold Project Area
- Nova Sustainable Fuels Renewable Energy Park Project Area
- Transportation**
- Road
- Unpaved Road
- Utilities (Line)**
- Existing Pipeline
- Existing Transmission Lines
- Water Features**
- Mapped Lakes and Rivers



Coordinate System: NAD 1983 UTM Zone 20N
 Sources: Service Nova Scotia, Esri, NASA, NGA, USGS, GeoNOVA, SNSIS, NSNRR, ACCDC, IBA Canada, CNWL, HERE, Garmin, USGS

Date: 2026-06-11	Project #: 25-11682
Scale: 1:115,000	<h1>6.1</h1>
Drawn By: M. Partridge	
Checked By: A. Doane	





Harbour Hills Wind Project

Ecodistricts and Ecoregions



- Study Area
- Assessment Area
- Proposed Turbine Locations
- Nova Scotia Uplands Ecoregion**
- 370 St. Marys River Ecodistrict
- Eastern Ecoregion**
- 440 Eastern Interior Ecodistrict
- Atlantic Coastal Ecoregion**
- 820 Eastern Shore Ecodistrict
- Transportation**
- Road
- Unpaved Road
- Utilities (Line)**
- Existing Pipeline
- Existing Transmission Lines
- Water Features**
- Mapped Lakes and Rivers



Coordinate System: NAD 1983 UTM Zone 20N
 Sources: Esri, NASA, NGA, USGS, GeoNOVA, SNSIS, NSNRR, ACCDC, IBA Canada, CNWL, HERE, Garmin, USGS

Date: 2026-06-11	Project #: 25-11682
Scale: 1:85,000	Drawing #: 7.1
Drawn By: K. Wallace	
Checked By: A. Doane	

