

# Harbour Hills Wind Project

Atmospheric LAA

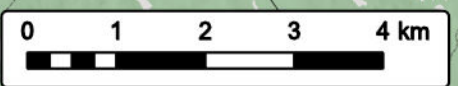


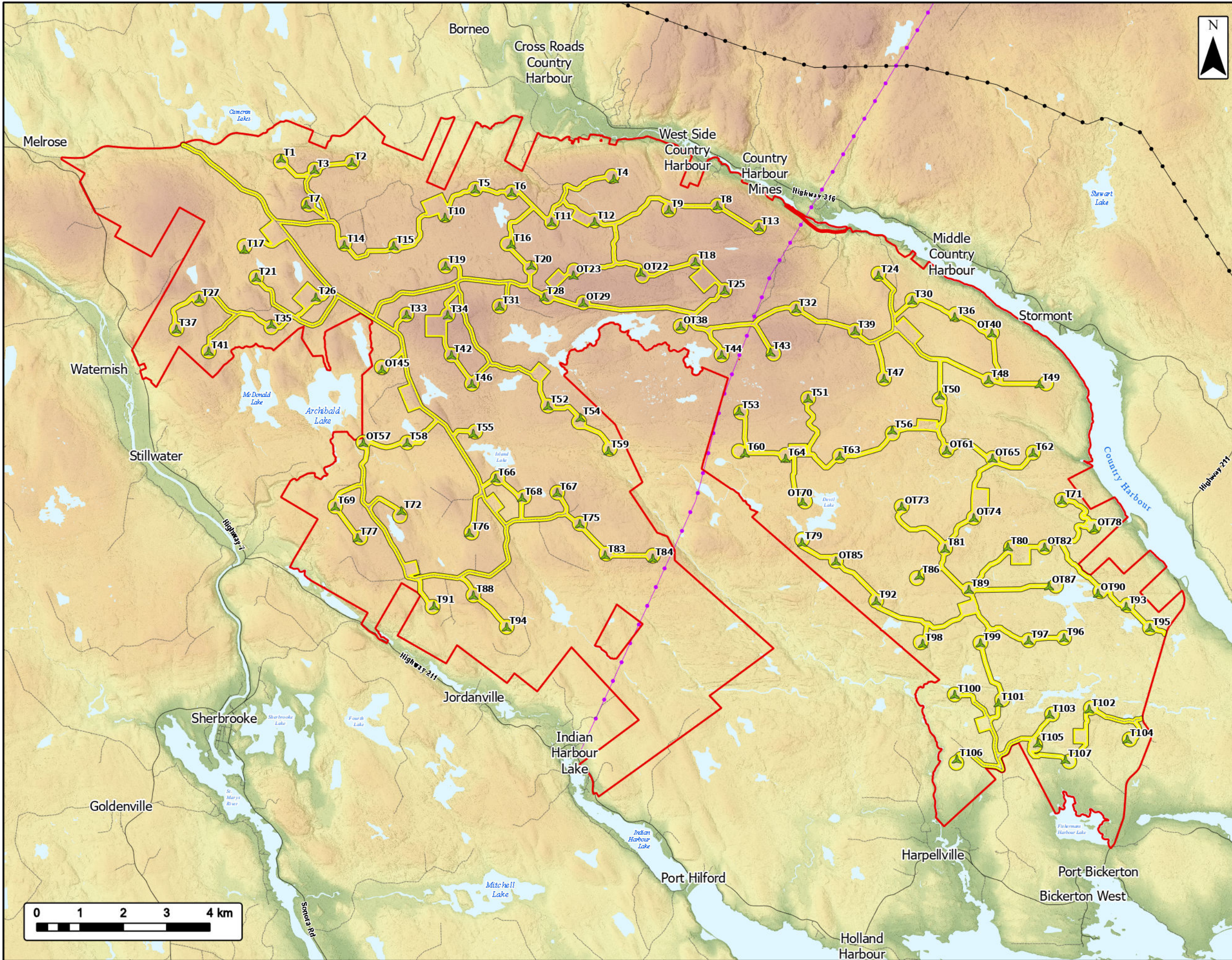
Study Area	
Assessment Area	
Atmospheric Local Assessment Area (LAA)	
Proposed Turbine Locations	
<b>Transportation</b>	
Road	
Unpaved Road	
<b>Utilities (Line)</b>	
Existing Pipeline	
Existing Transmission Lines	
<b>Water Features</b>	
Mapped Lakes and Rivers	



Coordinate System: NAD 1983 UTM Zone 20N  
 Sources: Service Nova Scotia, Esri, NASA, NGA, USGS, GeoNOVA, SNSIS, NSNRR, ACCDC, IBA Canada, CNWL, HERE, Garmin, USGS

Date:	2026-06-11	Project #:	25-11682
Scale:	1:85,000	Drawing #:	<b>7.2</b>
Drawn By:	K. Wallace		
Checked By:	A. Doane		








# Harbour Hills Wind Project

Geomorphology




Study Area 

Assessment Area 


Proposed Turbine Locations 


**Elevation (m ASL)**  
196.723




-1.500


**Transportation**

Road 

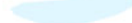
Unpaved Road 

**Utilities (Line)**

Existing Pipeline 

Existing Transmission Lines 

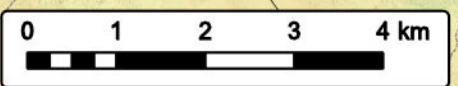
**Water Features**

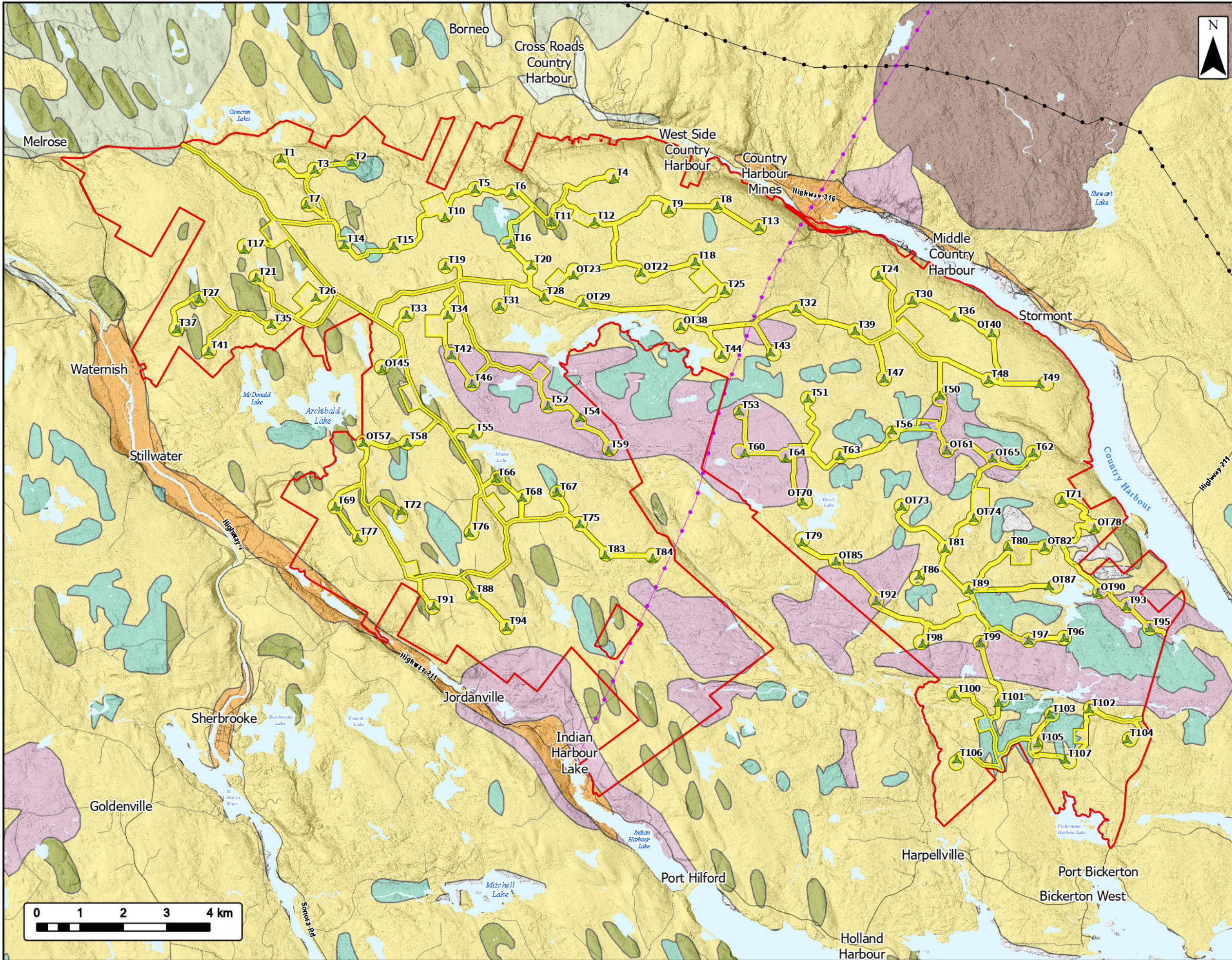
Mapped Lakes and Rivers 



Coordinate System: NAD 1983 UTM Zone 20N  
Sources: Service Nova Scotia, GeoNOVA, SNSIS, NSNRR, ACCDC, IBA Canada, CNWI, HERE, Garmin, USGS

Date:	2026-06-11	Project #:	25-11682
Scale:	1:85,000	Drawing #:	<b>8.1</b>
Drawn By:	K. Wallace		
Checked By:	A. Doane		





# Harbour Hills Wind Project

## Surficial Geology

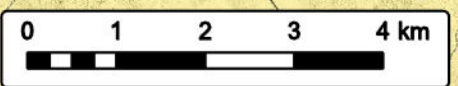


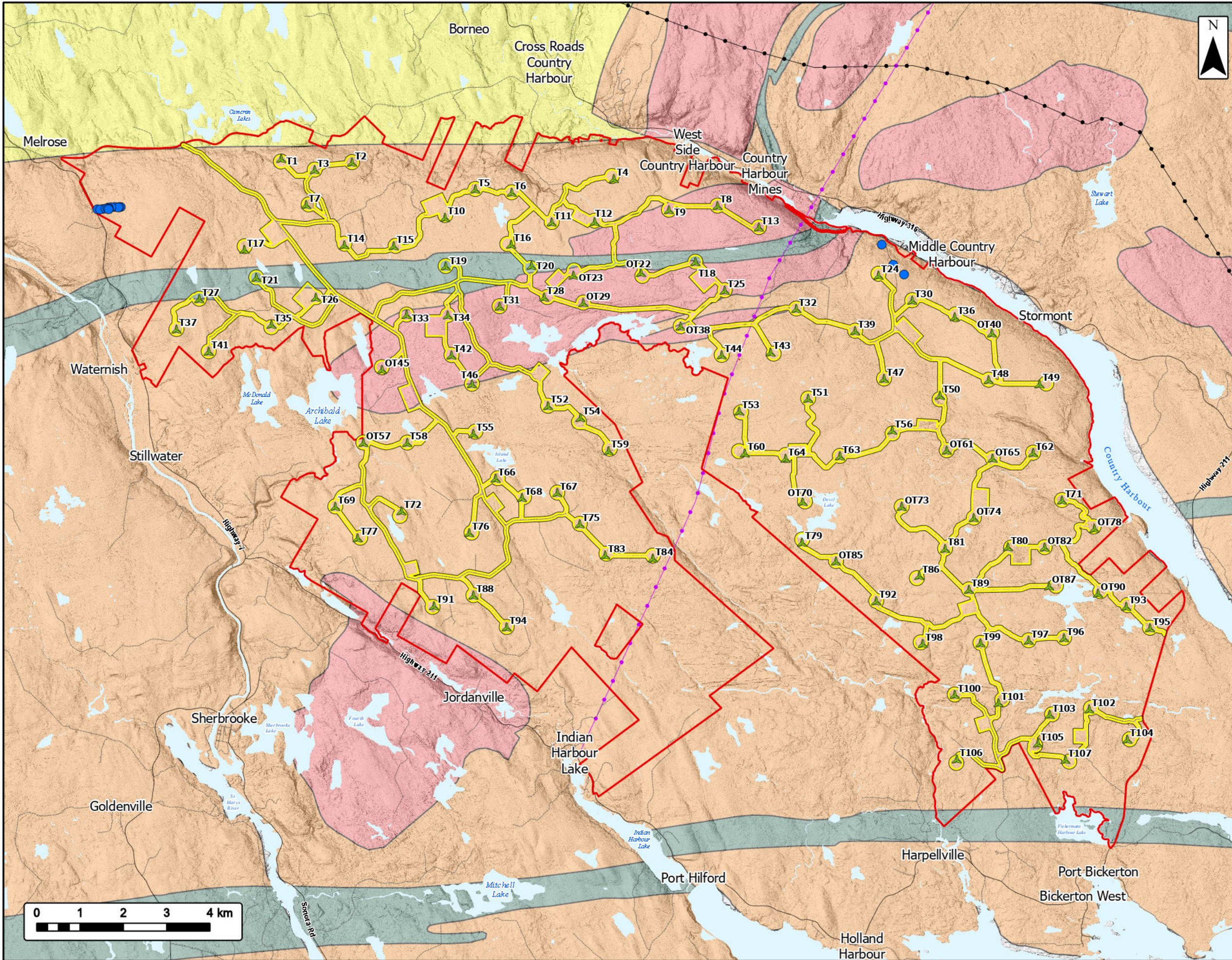
Study Area		<b>Transportation</b>	
Assessment Area		Road	
Proposed Turbine Locations		Unpaved Road	
<b>Surficial Geology By Unit</b>		<b>Utilities (Line)</b>	
Alluvial Deposits		Existing Pipeline	
Bedrock		Existing Transmission Lines	
Hummocky Ground Moraine		<b>Water Features</b>	
Kame Fields and Esker Systems		Mapped Lakes and Rivers	
Organic Deposits			
Silty Drumlin			
Silty Till Plain			
Stony Till Plain			



Coordinate System: NAD 1983 UTM Zone 20N  
 Sources: Service Nova Scotia, GeoNOVA, SNSIS, NSNRR, ACCDC, IBA Canada, CNWI, HERE, Garmin, USGS

Date:	2026-06-11	Project #:	25-11682
Scale:	1:85,000	Drawing #:	<b>8.2</b>
Drawn By:	K. Wallace		
Checked By:	A. Doane		








# Harbour Hills Wind Project


## Bedrock Geology and Abandoned Mine Openings



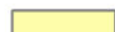



**Study Area** 

**Assessment Area** 



**Proposed Turbine Locations** 

**Abandoned Mine Opening** 



**Bedrock Geology By Formation**

- Horton Group: southern mainland 
- Halifax Formation 
- Goldenville Formation 
- Middle - Late Devonian muscovite biotite monzogranite 


**Transportation**

- Road 
- Unpaved Road 

**Utilities (Line)**

- Existing Pipeline 
- Existing Transmission Lines 

**Water Features**

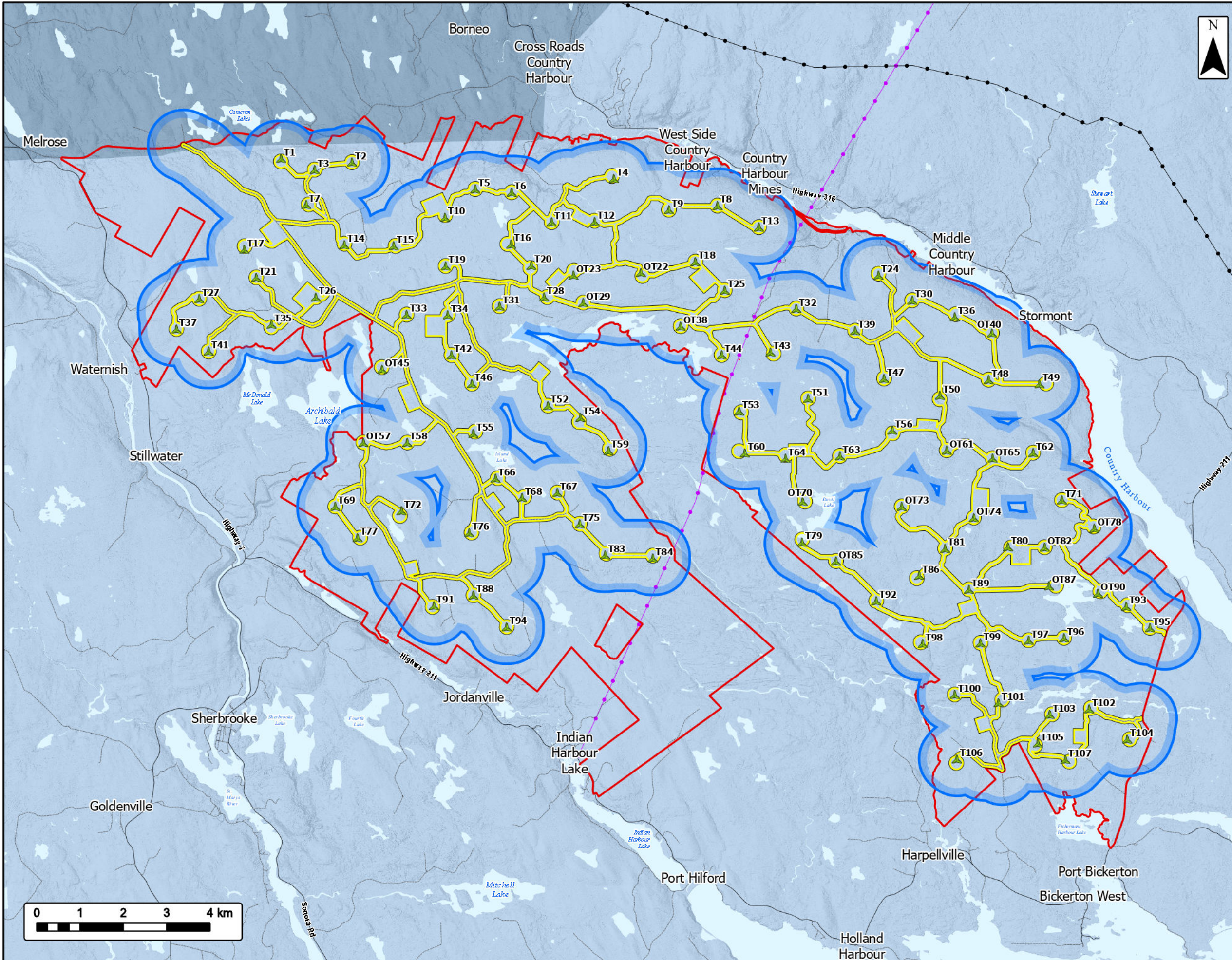
- Mapped Lakes and Rivers 



Coordinate System: NAD 1983 UTM Zone 20N  
 Sources: Service Nova Scotia, GeoNOVA, SNSIS, NSNRR, ACCDC, IBA Canada, CNWI, HERE, Garmin, USGS

Date: 2026-06-11	Project #: 25-11682
Scale: 1:85,000	Drawing #: <b>8.3</b>
Drawn By: K. Wallace	
Checked By: A. Doane	





# Harbour Hills Wind Project

Karst Risk

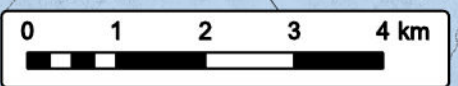


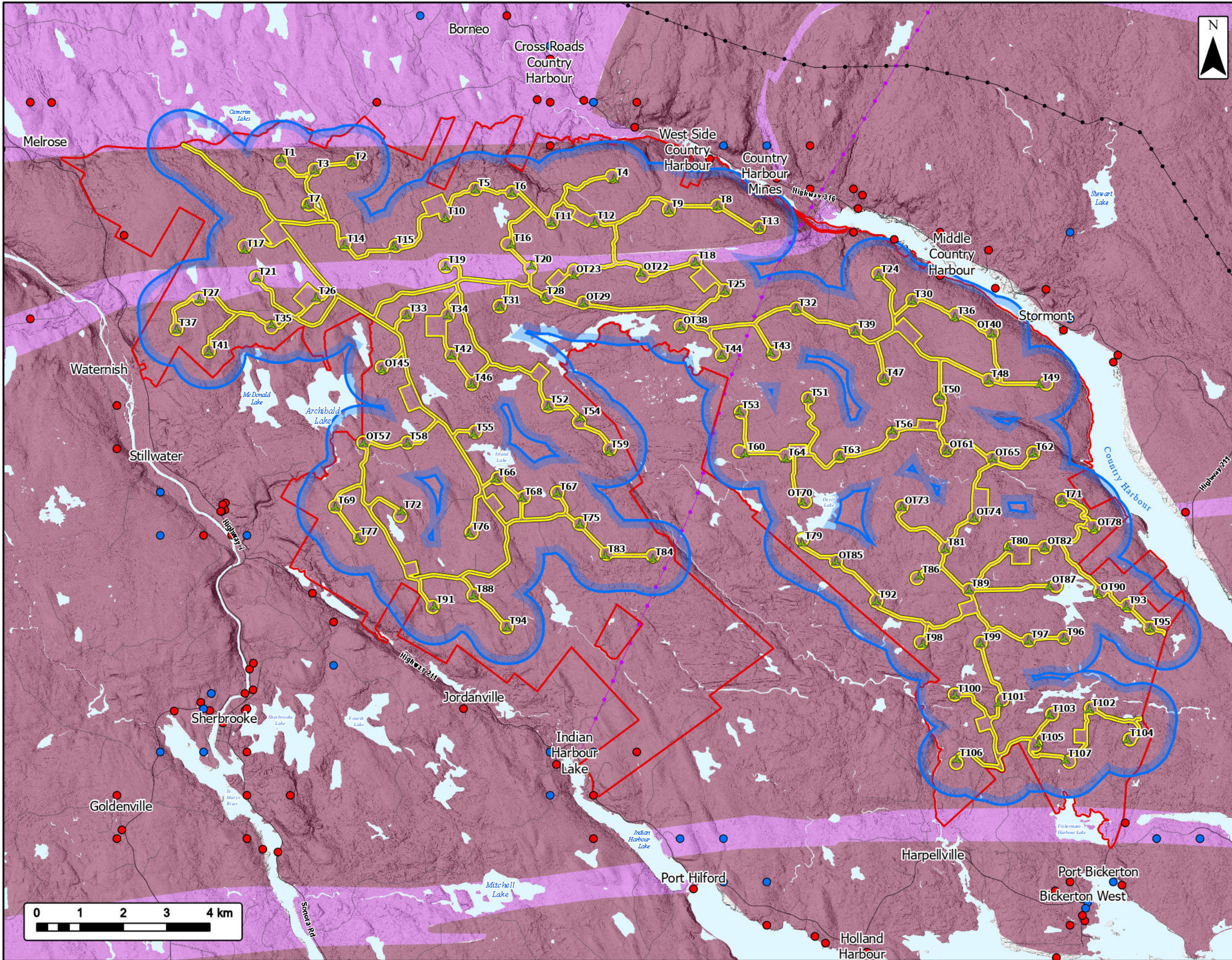
- Study Area
- Assessment Area
- Geophysical Local Assessment Area (LAA)
- Proposed Turbine Locations
- Karst Risk**
- Low Risk
- Medium Risk
- Transportation**
- Road
- Unpaved Road
- Utilities (Line)**
- Existing Pipeline
- Existing Transmission Lines
- Water Features**
- Mapped Lakes and Rivers



Coordinate System: NAD 1983 UTM Zone 20N  
 Sources: Service Nova Scotia, GeoNOVA, SNSIS, NSNRR, ACCDC, IBA Canada, CNWI, HERE, Garmin, USGS

Date: 2026-06-11	Project #: 25-11682
Scale: 1:85,000	<h1>8.4</h1>
Drawn By: K. Wallace	
Checked By: A. Doane	





# Harbour Hills Wind Project

## Arsenic Groundwater Risk Map



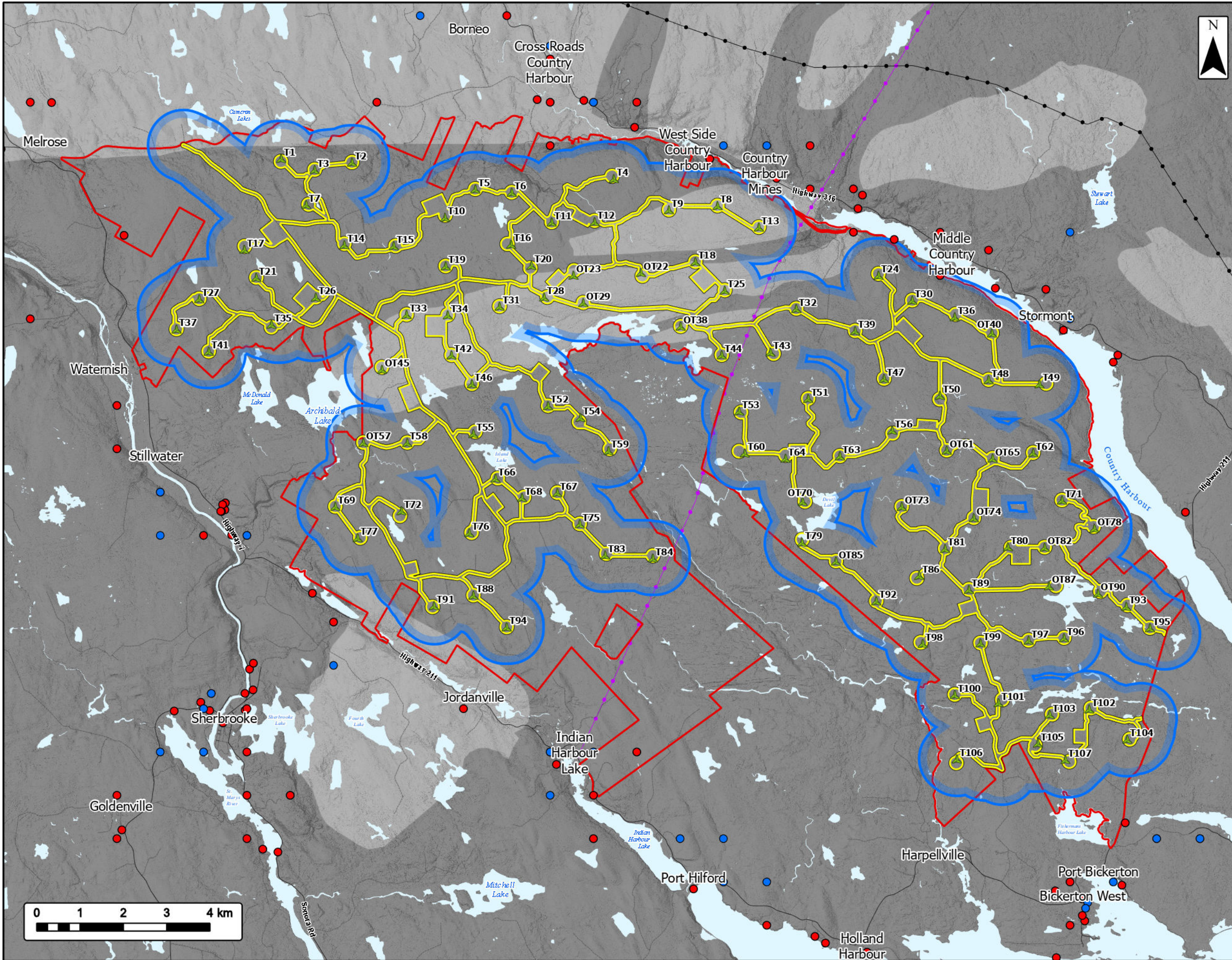
Study Area	
Assessment Area	
Geophysical Local Assessment Area (LAA)	
Proposed Turbine Locations	
<b>Groundwater Well</b>	
Drilled Well	
Dug Well	
<b>Arsenic Risk</b>	
High Risk	
Medium Risk	
<b>Transportation</b>	
Road	
Unpaved Road	
<b>Utilities (Line)</b>	
Existing Pipeline	
Existing Transmission Lines	
<b>Water Features</b>	
Mapped Lakes and Rivers	



Coordinate System: NAD 1983 UTM Zone 20N  
 Sources: Service Nova Scotia, GeoNOVA, SNSIS, NSNRR, ACCDC, IBA Canada, CNWI, HERE, Garmin, USGS

Date:	2026-06-11	Project #:	25-11682
Scale:	1:85,000	Drawing #:	<b>8.5</b>
Drawn By:	K. Wallace		
Checked By:	A. Doane		





# Harbour Hills Wind Project

## Manganese Groundwater Risk Map

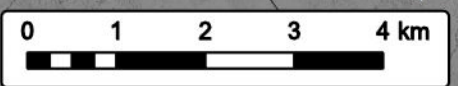


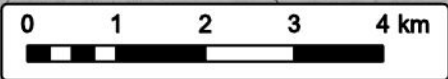
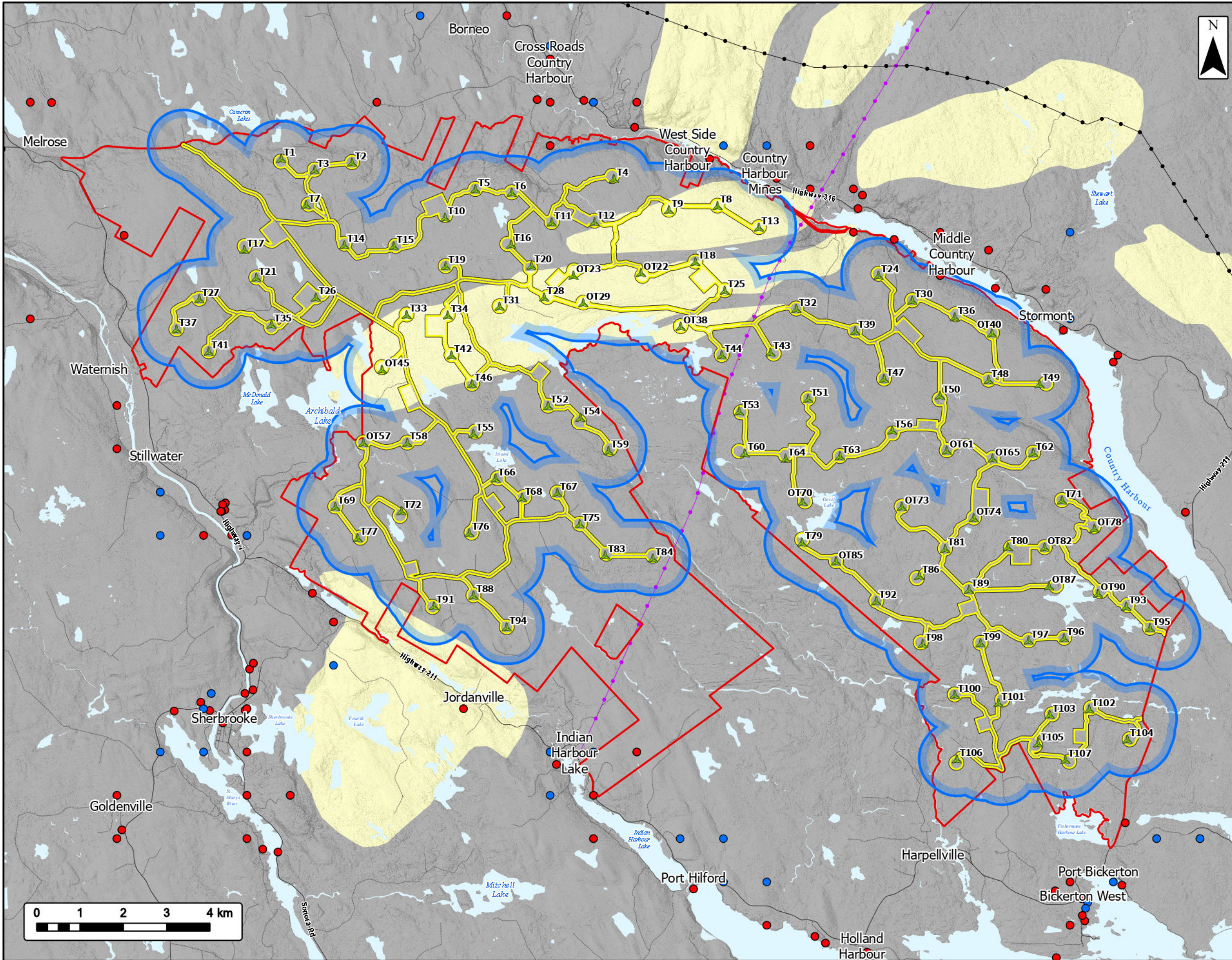
- Study Area
- Assessment Area
- Geophysical Local Assessment Area (LAA)
- Proposed Turbine Locations
- Groundwater Well**
- Drilled Well
- Dug Well
- Manganese Risk**
- High Risk
- Medium Risk
- Transportation**
- Road
- Unpaved Road
- Utilities (Line)**
- Existing Pipeline
- Existing Transmission Lines
- Water Features**
- Mapped Lakes and Rivers



Coordinate System: NAD 1983 UTM Zone 20N  
 Sources: Service Nova Scotia, GeoNOVA, SNSIS, NSNRR, ACCDC, IBA Canada, CNWI, HERE, Garmin, USGS

Date: 2026-06-11	Project #: 25-11682
Scale: 1:85,000	Drawing #:
Drawn By: K. Wallace	8.6
Checked By: A. Doane	





# Harbour Hills Wind Project

## Uranium Groundwater Risk Map



- Study Area
- Assessment Area
- Geophysical Local Assessment Area (LAA)
- Proposed Turbine Locations
- Groundwater Well**
- Drilled Well
- Dug Well
- Uranium Risk**
- Low Risk
- Medium Risk
- Transportation**
- Road
- Unpaved Road
- Utilities (Line)**
- Existing Pipeline
- Existing Transmission Lines
- Water Features**
- Mapped Lakes and Rivers



Coordinate System: NAD 1983 UTM Zone 20N  
 Sources: Service Nova Scotia, GeoNOVA, SNSIS, NSNRR, ACCDC, IBA Canada, CNWI, HERE, Garmin, USGS

Date:	2026-06-11	Project #:	25-11682
Scale:	1:85,000	Drawing #:	8.7
Drawn By:	K. Wallace		
Checked By:	A. Doane		

