

Harbour Hills Wind Project

Freshwater Desktop Review



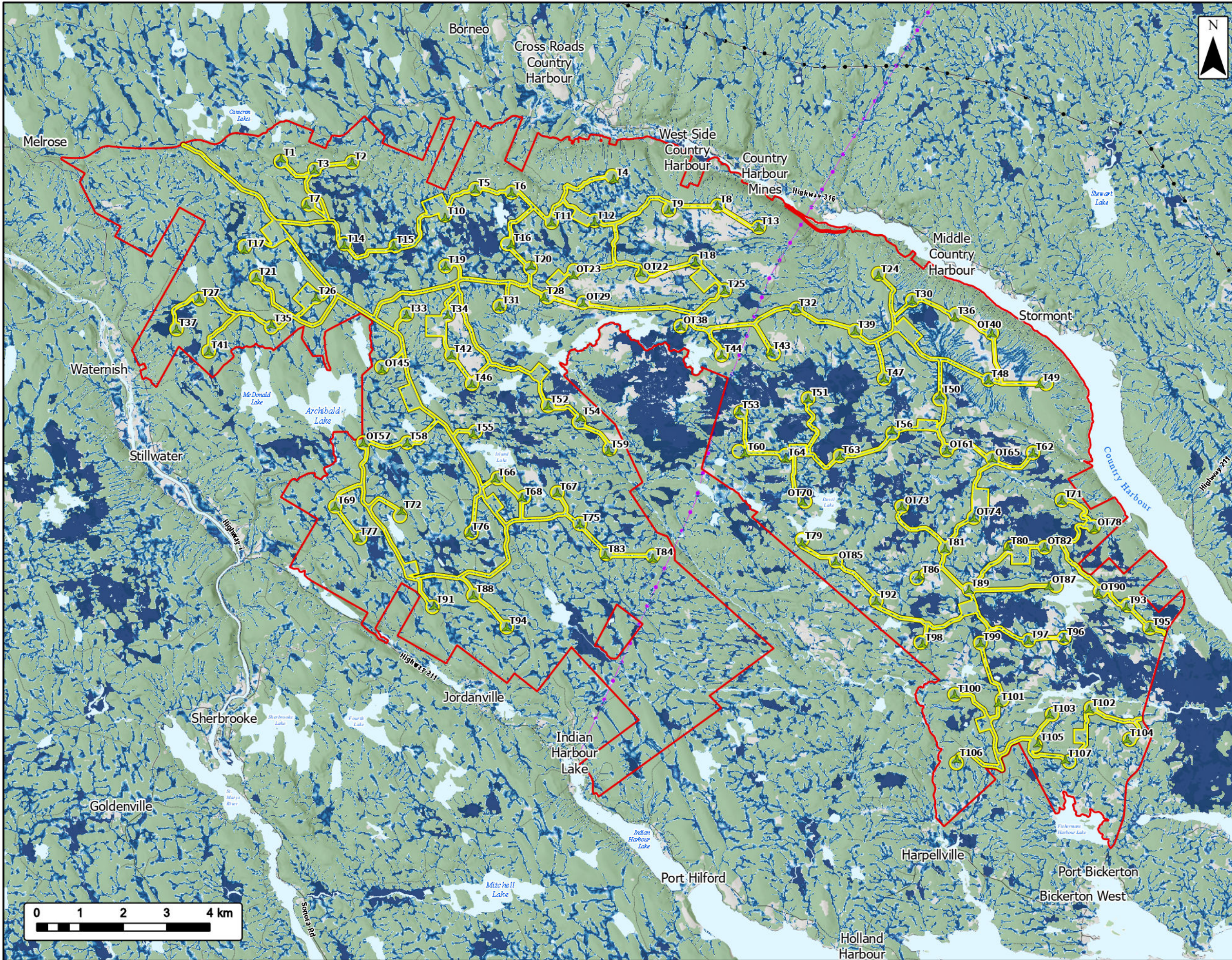
- Study Area
- Assessment Area
- Proposed Turbine Locations
- ACCDC Point Data**
- American Eel
- Atlantic Salmon - Nova Scotia Southern Upland population
- Brook Trout
- Eastern Pearlfshell
- Alewife
- Primary Watershed Boundary
- Secondary Watershed Boundary
- Transportation**
- Road
- Unpaved Road
- Utilities (Line)**
- Existing Pipeline
- Existing Transmission Lines
- Water Features**
- Mapped Watercourses
- Mapped Lakes and Rivers



Coordinate System: NAD 1983 UTM Zone 20N
 Sources: Service Nova Scotia, Esri, NASA, NGA, USGS, GeoNOVA, SNSIS, NSNRR, ACCDC, IBA Canada, CNWL, HERE, Garmin, USGS

Date: 2026-06-11	Project #: 25-11682
Scale: 1:85,000	Drawing #:
Drawn By: K. Wallace	9.1
Checked By: A. Doane	





Harbour Hills Wind Project

Wet Area Mapping



Study Area		Depth to Water (cm)	
Assessment Area		0 - 10	
Proposed Turbine Locations		10 - 20	
		20 - 30	
Transportation		30 - 40	
Road		40 - 50	
Unpaved Road		50 - 60	
Utilities (Line)		60 - 70	
Existing Pipeline		70 - 80	
Existing Transmission Lines		80 - 90	
Water Features		90 - 100	
Mapped Lakes and Rivers			



Coordinate System: NAD 1983 UTM Zone 20N
 Sources: Service Nova Scotia, Esri, NASA, NGA, USGS, GeoNOVA, SNSIS, NSNRR, ACCDC, IBA Canada, CNWI, HERE, Garmin, USGS

Date:	2026-06-11	Project #:	25-11682
Scale:	1:85,000	Drawing #:	9.2
Drawn By:	K. Wallace		
Checked By:	A. Doane		

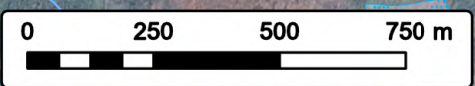
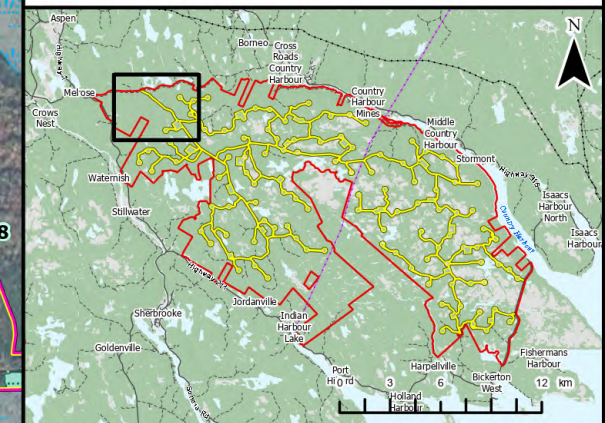


Harbour Hills Wind Project

Field Assessment Results



- Study Area Field Delineated Watercourse
- Assessment Area Field Delineated Wetland
- Gap Area **Transportation**
- Clearing Footprint Unpaved Road
- Proposed Turbine Locations **Water Features**
- Flora SAR/SOCI Observations Mapped Watercourses
- Vegetation Community Points Mapped Wetlands
- Incidental Herpetofauna Observation
- Electrofishing Location
- Incidental Fauna Observations



Coordinate System: NAD 1983 UTM Zone 20N
 Sources: © OpenStreetMap (and) contributors, CC-BY-SA, Esri, CGIAR, USGS, GeoNOVA, SNSIS, NSNRR, ACCDC, IBA Canada, CNWI, HERE, Garmin, USGS

Date: 2026-06-16	Project #: 25-11682
Scale: 1:15,000	Drawing #: 9.3A
Drawn By: M. Partridge	
Checked By: A. Doane	

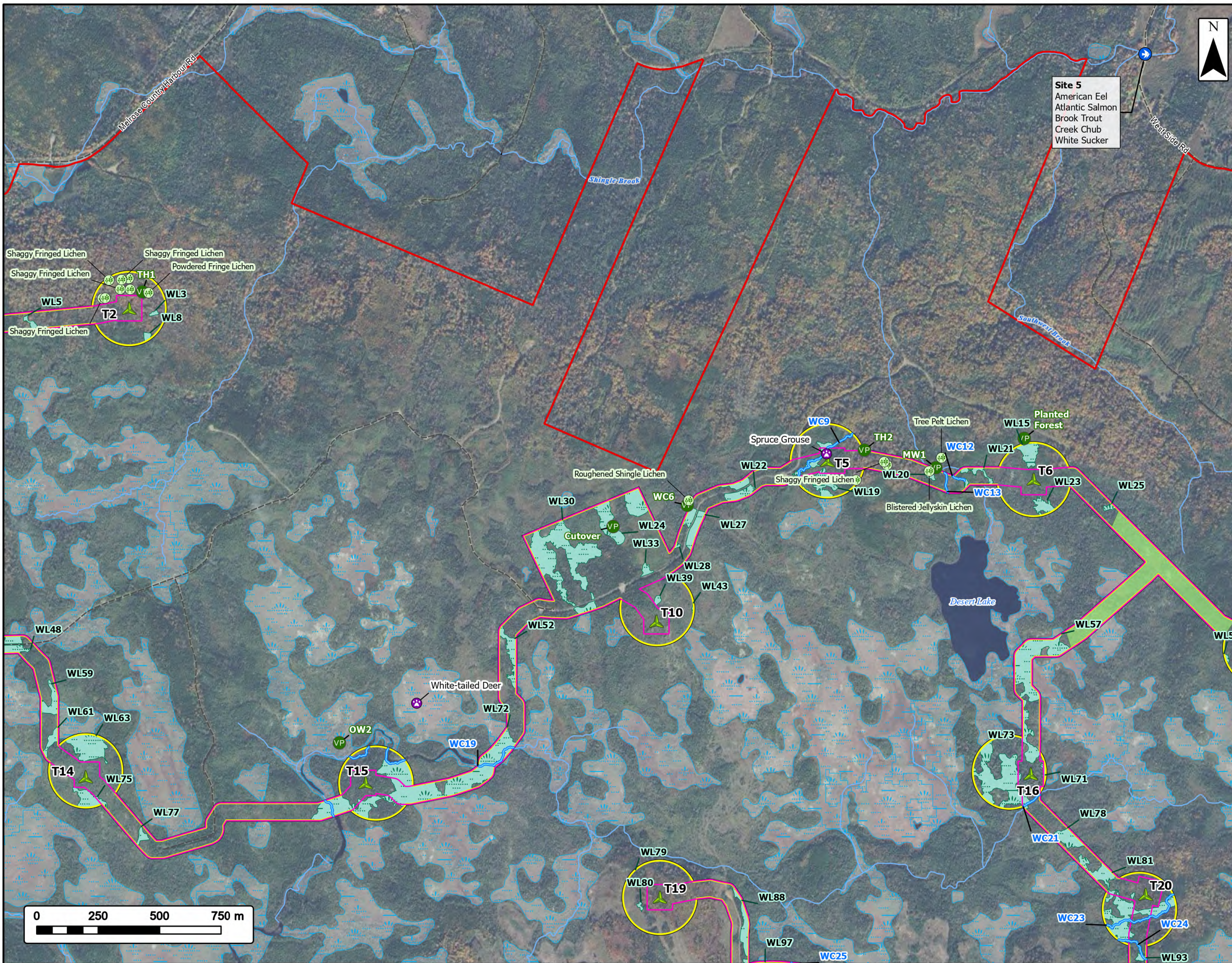


Harbour Hills Wind Project

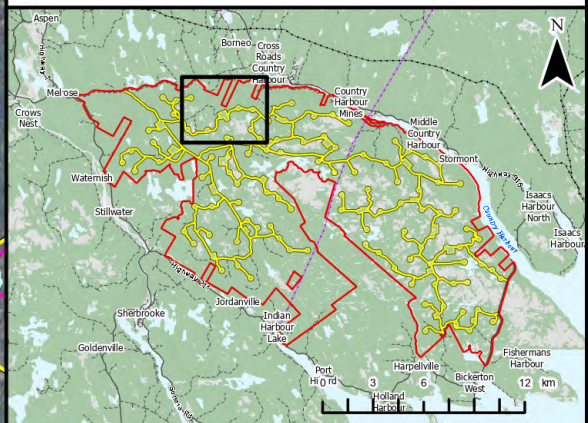
Field Assessment Results



Site 5
American Eel
Atlantic Salmon
Brook Trout
Creek Chub
White Sucker

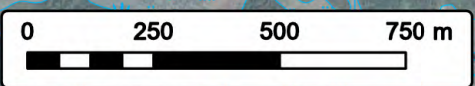


Study Area		Field Delineated Watercourse	
Assessment Area		Field Delineated Wetland	
Gap Area		Transportation	
Clearing Footprint		Road	
Proposed Turbine Locations		Unpaved Road	
Flora SAR/SOCI Observations		Water Features	
Vegetation Community Points		Mapped Watercourses	
Electrofishing Location		Mapped Wetlands	
Incidental Fauna Observations			



Coordinate System: NAD 1983 UTM Zone 20N
Sources: © OpenStreetMap (and) contributors, CC-BY-SA, Esri, CGIAR, USGS, GeoNOVA, SNSIS, NSNRR, ACCDC, IBA Canada, CNWI, HERE, Garmin, USGS

Date:	2026-06-16	Project #:	25-11682
Scale:	1:15,000	Drawing #:	9.3B
Drawn By:	M. Partridge		
Checked By:	A. Doane		

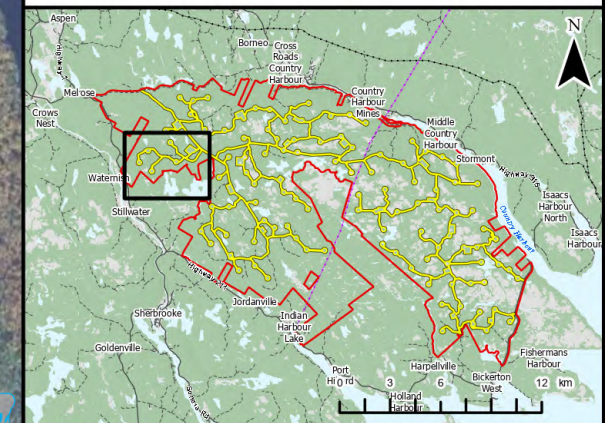
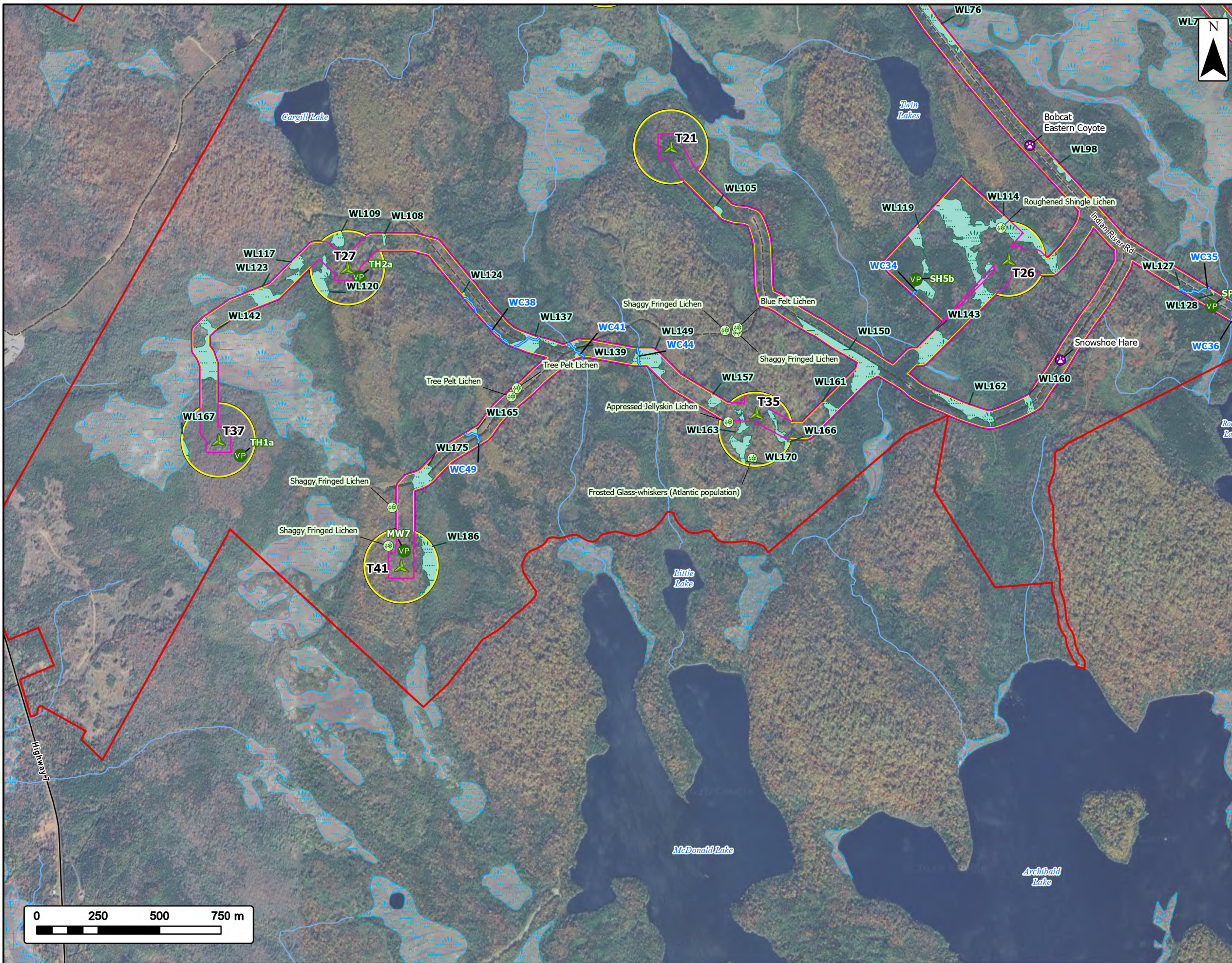


Harbour Hills Wind Project

Field Assessment Results



Study Area		Field Delineated Watercourse	
Assessment Area		Field Delineated Wetland	
Clearing Footprint		Transportation	
Proposed Turbine Locations		Road	
Flora SAR/SOCI Observations		Unpaved Road	
Vegetation Community Points		Water Features	
Incidental Fauna Observations		Mapped Watercourses	
		Mapped Wetlands	



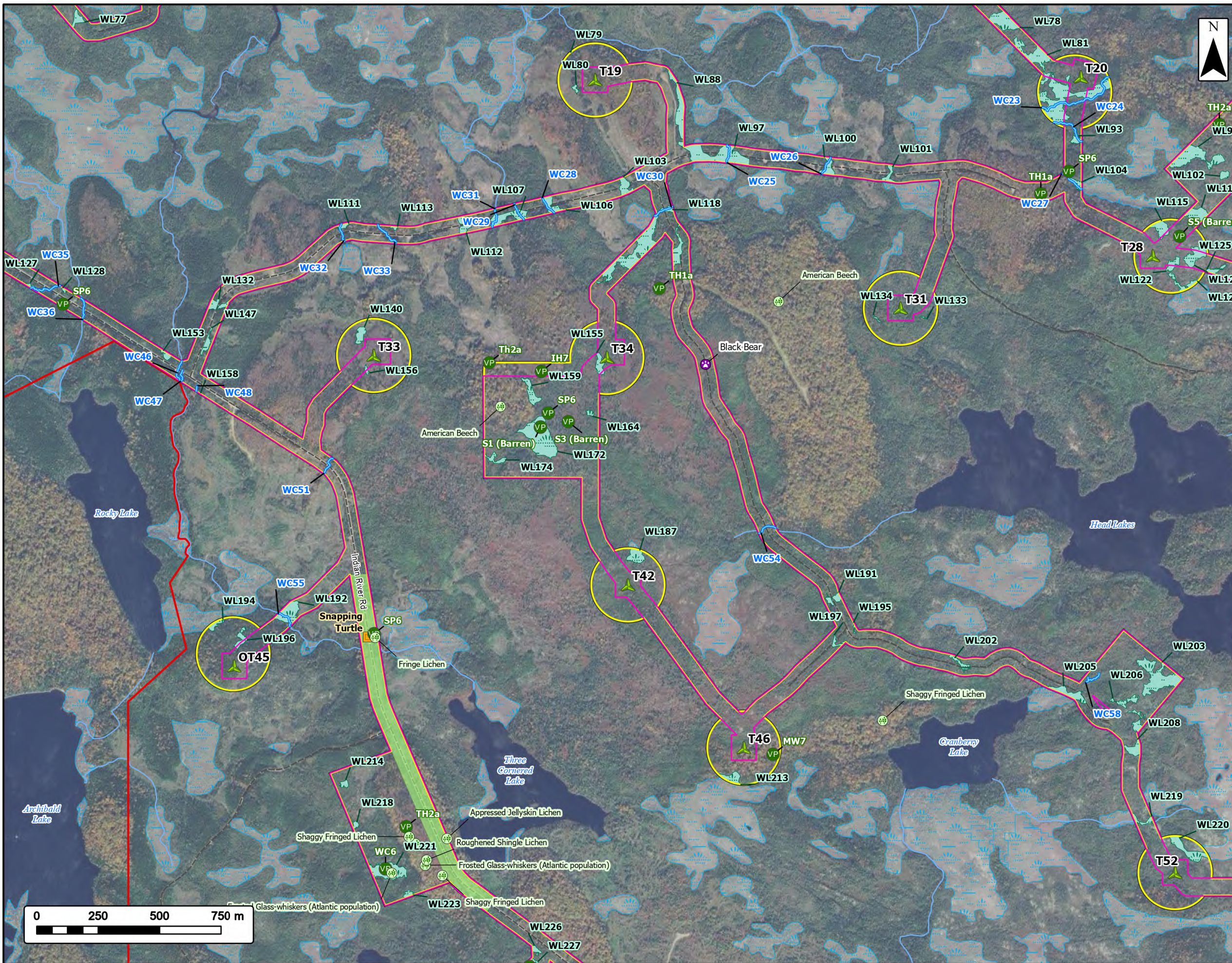
Coordinate System: NAD 1983 UTM Zone 20N
 Sources: © OpenStreetMap (and) contributors, CC-BY-SA, Esri, CGIAR, USGS, GeoNOVA, SNSIS, NSNRR, ACCDC, IBA Canada, CNWI, HERE, Garmin, USGS

Date:	2026-06-16	Project #:	25-11682
Scale:	1:15,000	Drawing #:	9.3C
Drawn By:	M. Partridge		
Checked By:	A. Doane		

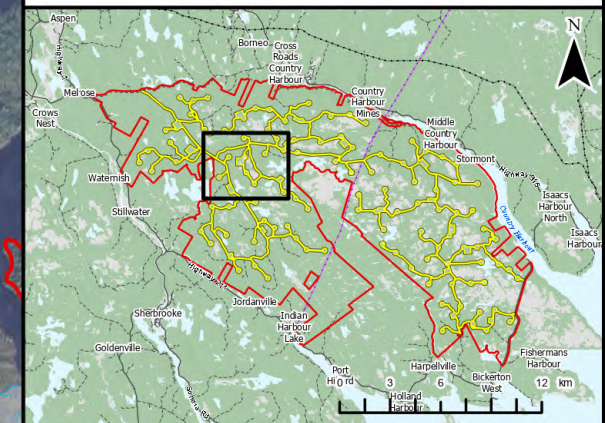


Harbour Hills Wind Project

Field Assessment Results



Study Area		Field Delineated Watercourse	
Assessment Area		Field Delineated Wetland	
Gap Area		Transportation	
Clearing Footprint		Unpaved Road	
Proposed Turbine Locations		Water Features	
Flora SAR/SOCI Observations		Mapped Watercourses	
Vegetation Community Points		Mapped Wetlands	
Incidental Herpetofauna Observations			
Incidental Fauna Observations			



Coordinate System: NAD 1983 UTM Zone 20N
 Sources: © OpenStreetMap (and) contributors, CC-BY-SA, Esri, CGIAR, USGS, GeoNOVA, SNSIS, NSNRR, ACCDC, IBA Canada, CWWI, HERE, Garmin, USGS

Date:	2026-06-16	Project #:	25-11682
Scale:	1:15,000	Drawing #:	9.3D
Drawn By:	M. Partridge		
Checked By:	A. Doane		



Harbour Hills Wind Project

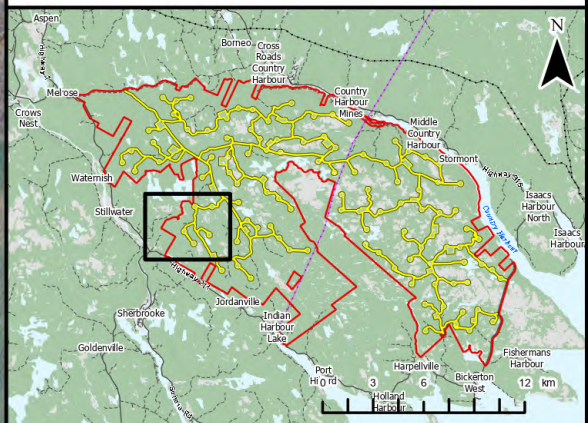
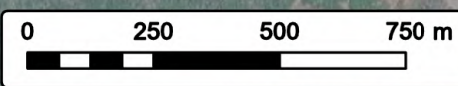
Field Assessment Results



Study Area		Field Delineated Watercourse	
Assessment Area		Field Delineated Wetland	
Gap Area		Transportation	
Clearing Footprint		Road	
Proposed Turbine Locations		Unpaved Road	
Flora SAR/SOCI Observations		Water Features	
Vegetation Community Points		Mapped Watercourses	
Electrofishing Location		Mapped Wetlands	
Fauna Observations			
Incidental Fauna Observations			



Site 2
American Eel
Atlantic Salmon
Brook Trout
White Sucker



Coordinate System: NAD 1983 UTM Zone 20N
Sources: © OpenStreetMap (and) contributors, CC-BY-SA, Esri, CGIAR, USGS, GeoNOVA, SNSIS, NSNRR, ACCDC, IBA Canada, CNWI, HERE, Garmin, USGS

Date:	2026-06-16	Project #:	25-11682
Scale:	1:15,000	Drawing #:	9.3E
Drawn By:	M. Partridge		
Checked By:	A. Doane		

