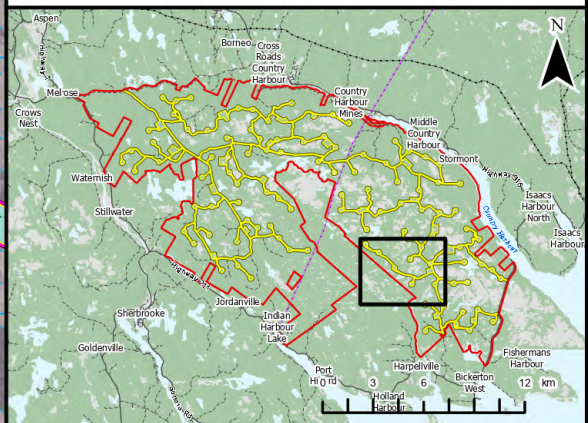


Harbour Hills Wind Project

Field Assessment Results

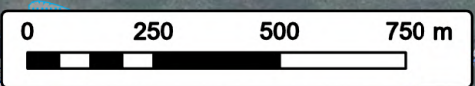


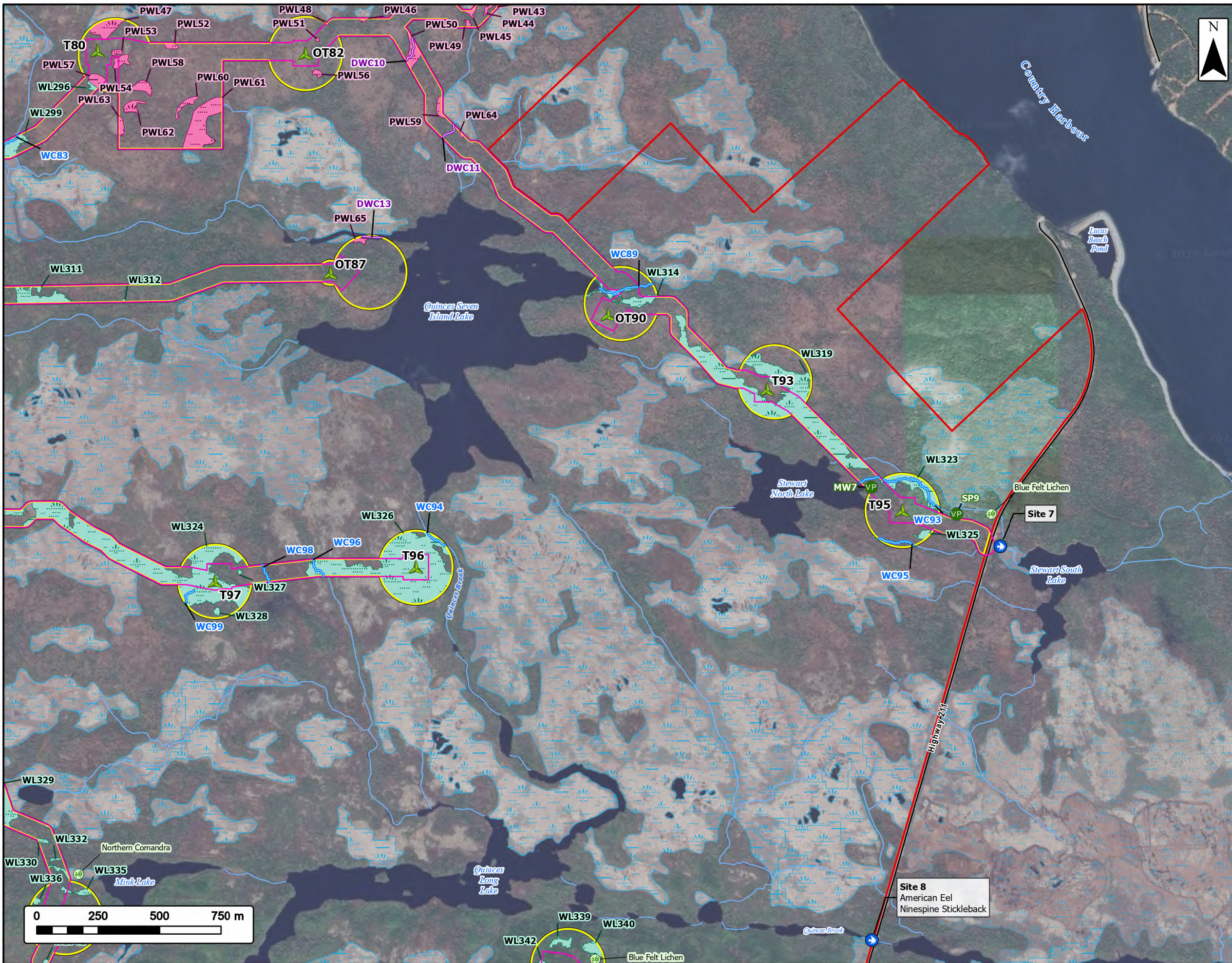
Study Area		Field Delineated Watercourse	
Assessment Area		Predicted Watercourses (PWC)	
Gap Area		Field Delineated Wetland	
Clearing Footprint		Predicted Wetlands (PWL)	
Proposed Turbine Locations		Water Features	
Flora SAR/SOCI Observations		Mapped Watercourses	
Vegetation Community Points		Mapped Wetlands	



Coordinate System: NAD 1983 UTM Zone 20N
 Sources: © OpenStreetMap (and) contributors, CC-BY-SA, Esri, CGIAR, USGS, GeoNOVA, SNSIS, NSNRR, ACCDC, IBA Canada, CNWI, HERE, Garmin, USGS

Date:	2026-06-16	Project #:	25-11682
Scale:	1:15,000	Drawing #:	9.3N
Drawn By:	M. Partridge		
Checked By:	A. Doane		



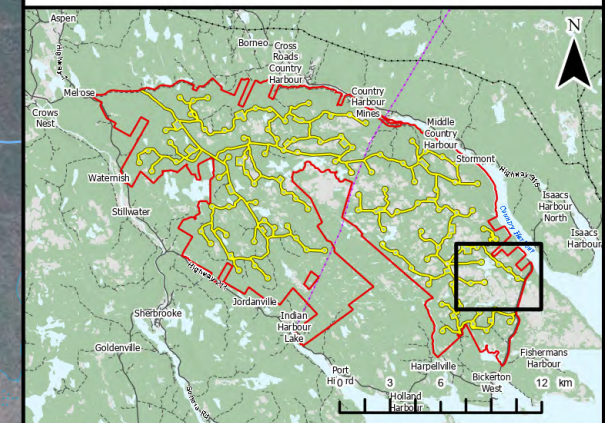


Harbour Hills Wind Project

Field Assessment Results



Study Area		Field Delineated Watercourse	
Assessment Area		Predicted Watercourses (PWC)	
Clearing Footprint		Field Delineated Wetland	
Proposed Turbine Locations		Predicted Wetlands (PWL)	
Flora SAR/SOCI Observations		Transportation	
Vegetation Community Points		Road	
Electrofishing Location		Unpaved Road	
		Water Features	
		Mapped Watercourses	
		Mapped Wetlands	



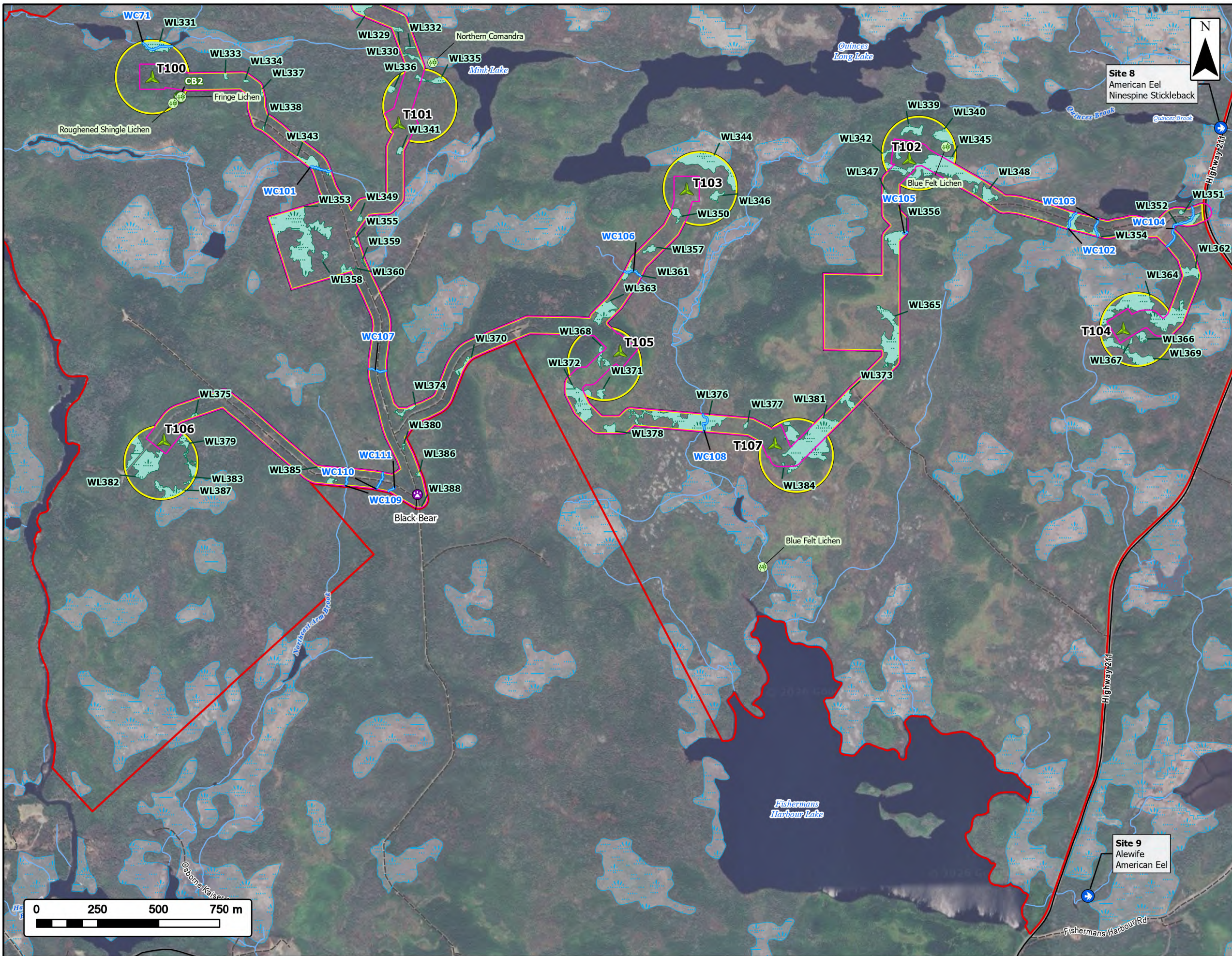
Coordinate System: NAD 1983 UTM Zone 20N
 Sources: © OpenStreetMap (and) contributors, CC-BY-SA, Esri, CGIAR, USGS, GeoNOVA, SNSIS, NSNRR, ACCDC, IBA Canada, CNWI, HERE, Garmin, USGS

Date:	2026-06-16	Project #:	25-11682
Scale:	1:15,000	Drawing #:	9.30
Drawn By:	M. Partridge		
Checked By:	A. Doane		



Site 8
 American Eel
 Ninespine Stickleback





Harbour Hills Wind Project

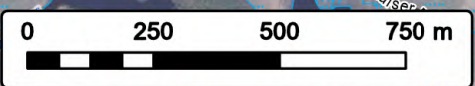
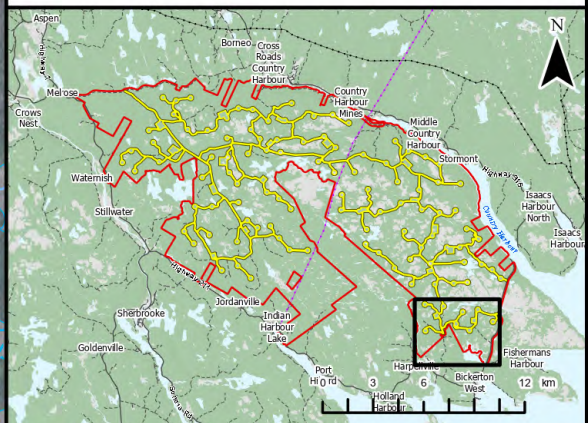
Field Assessment Results



Study Area		Field Delineated Watercourse	
Assessment Area		Field Delineated Wetland	
Clearing Footprint		Transportation	
Proposed Turbine Locations		Road	
Flora SAR/SOCI Observations		Unpaved Road	
Vegetation Community Points		Water Features	
Electrofishing Location		Mapped Watercourses	
Incidental Fauna Observations		Mapped Wetlands	

Site 8
American Eel
Ninespine Stickleback

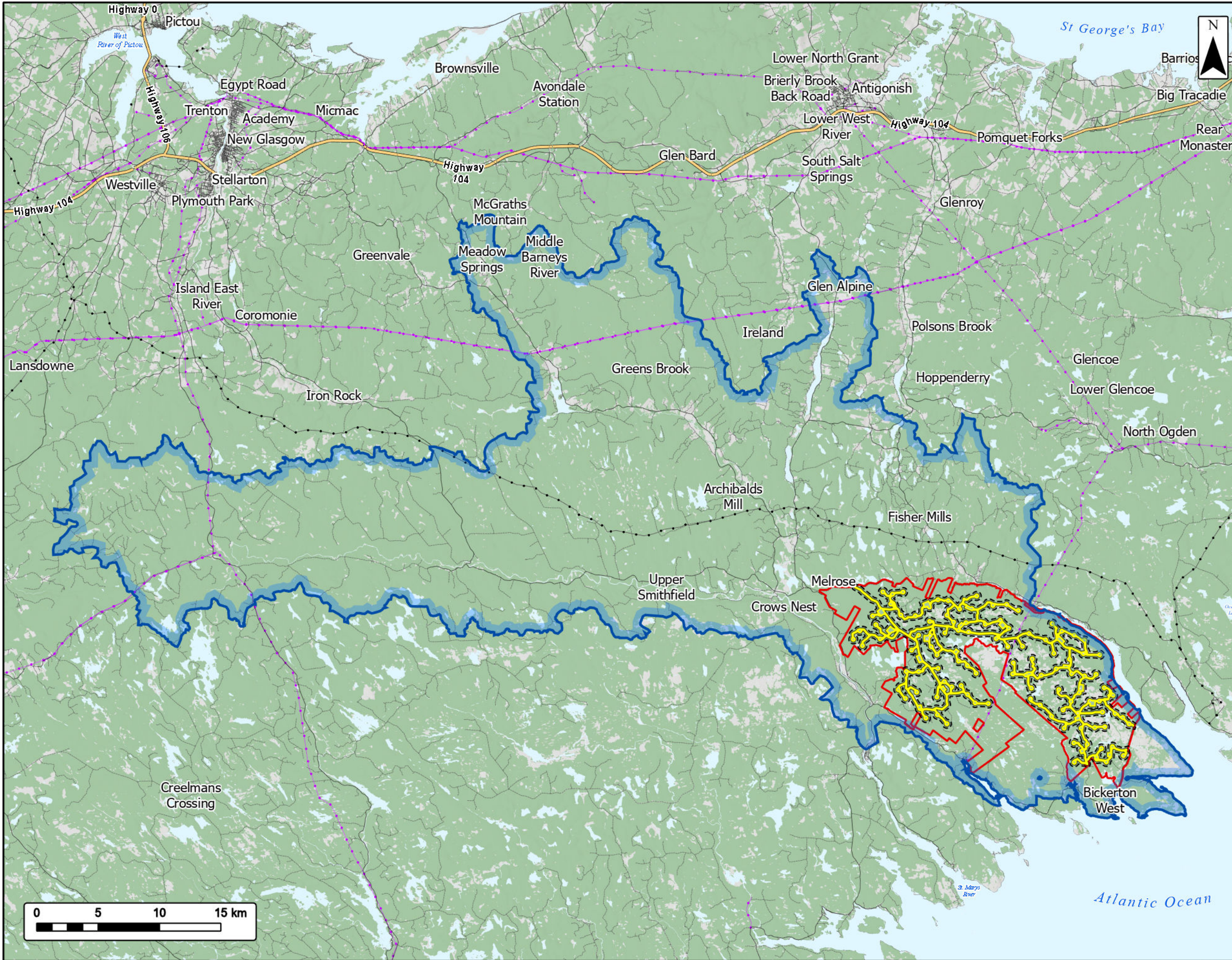
Site 9
Alewife
American Eel



Coordinate System: NAD 1983 UTM Zone 20N
Sources: © OpenStreetMap (and) contributors, CC-BY-SA, Esri, CGIAR, USGS, GeoNOVA, SNSIS, NSNRR, ACCDC, IBA Canada, CNWI, HERE, Garmin, USGS

Date:	2026-06-16	Project #:	25-11682
Scale:	1:15,000	Drawing #:	9.3P
Drawn By:	M. Partridge		
Checked By:	A. Doane		





Harbour Hills Wind Project

Aquatic Environment LAA and RAA

Study Area

Assessment Area

Local Assessment Area (LAA)

Regional Assessment Area (RAA)

Transportation

- Trans-Canada Highway
- Road
- Unpaved Road

Utilities (Line)

- Existing Pipeline
- Existing Transmission Lines

Water Features

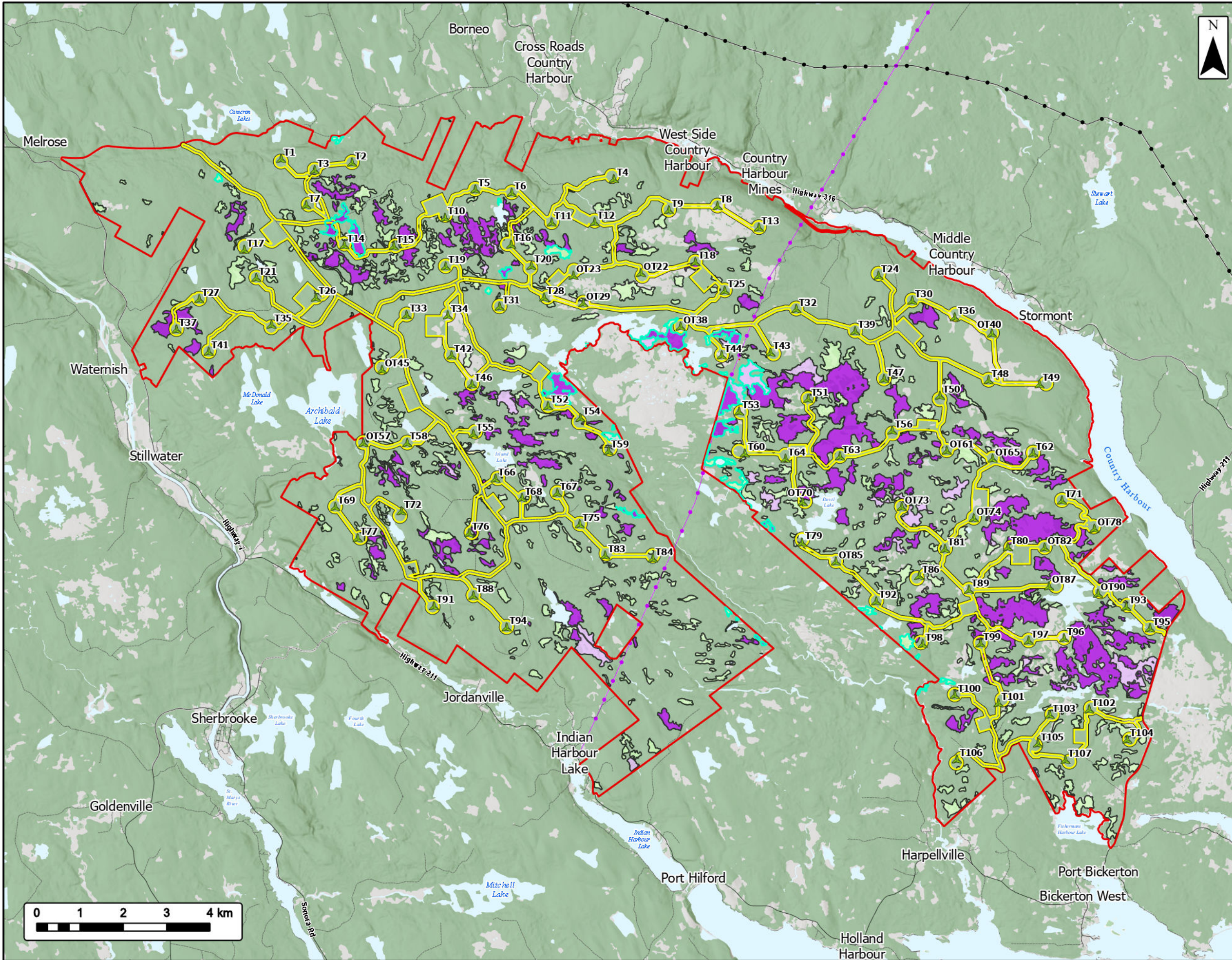
- Mapped Lakes and Rivers



Coordinate System: NAD 1983 UTM Zone 20N
 Sources: Service Nova Scotia, Esri, NASA, NGA, USGS, GeoNOVA, SNSIS, NSNRR, ACCDC, IBA Canada, CNWI, HERE, Garmin, USGS

Date:	2026-06-11	Project #:	25-11682
Scale:	1:300,000	Drawing #:	9.4
Drawn By:	K. Wallace		
Checked By:	A. Doane		





Harbour Hills Wind Project

Wetlands Desktop Review



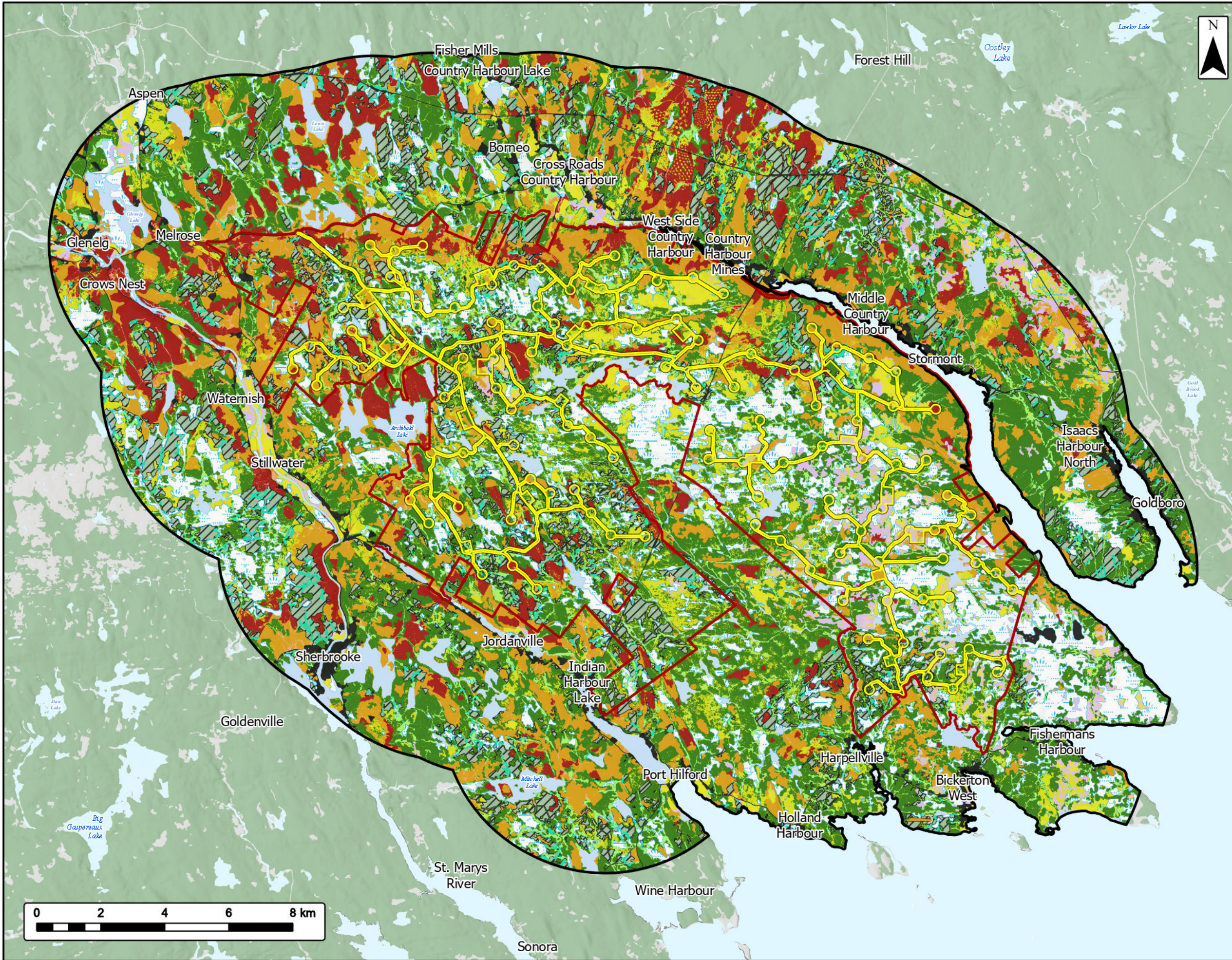
Study Area	
Assessment Area	
Proposed Turbine Locations	
NSDNR Wetland Inventory	
Bog or Fen	
Fen	
Marsh	
Swamp	
Water	
Potential Wetland of Special Significance	
Transportation	
Road	
Unpaved Road	
Utilities (Line)	
Existing Pipeline	
Existing Transmission Lines	
Water Features	
Mapped Lakes and Rivers	



Coordinate System: NAD 1983 UTM Zone 20N
 Sources: Service Nova Scotia, Esri, NASA, NGA, USGS, GeoNOVA, SNSIS, NSNRR, ACCDC, IBA Canada, CNWL, HERE, Garmin, USGS

Date:	2026-06-12	Project #:	25-11682
Scale:	1:85,000	Drawing #:	9.5
Drawn By:	K. Wallace		
Checked By:	A. Doane		





Harbour Hills Wind Project

Predicted Land Cover and Vegetation Community Assessment Points



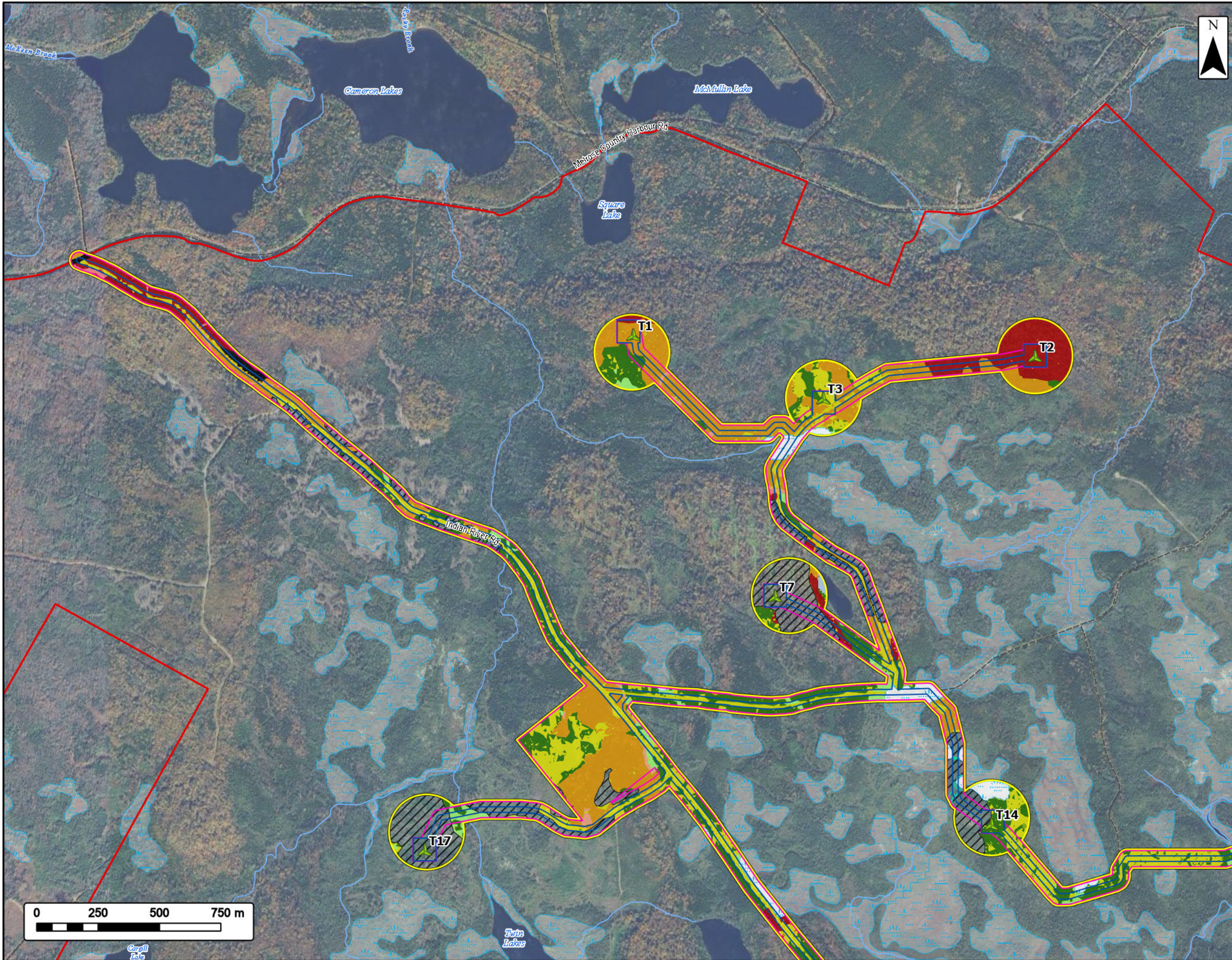
Study Area	
Assessment Area	
Cutover	
Cutover Wetland	
Hardwood Forest	
Hardwood Wet Forest	
Mixedwood Forest	
Mixedwood Wet Forest	
Open Areas	
Open Wetland	
Shrub/ Alders	
Softwood Forest	
Softwood Wet Forest	
Urban/ Developed	
Water	
Mapped Lakes and Rivers	



Coordinate System: NAD 1983 UTM Zone 20N
 Sources: Service Nova Scotia, Esri, NASA, NGA, USGS, GeoNOVA, SNSIS, NSNRR, ACCDC, IBA Canada, CNWI, HERE, Garmin, USGS

Date:	2026-06-11	Project #:	25-11682
Scale:	1:115,000	Drawing #:	10.1A
Drawn By:	K. Wallace		
Checked By:	A. Doane		



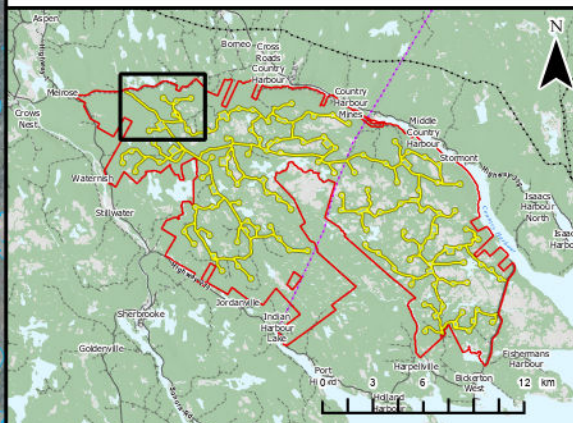


Harbour Hills Wind Project

Predicted Land Cover and Vegetation Community Assessment Points



Study Area		Cutover	
Assessment Area		Cutover Wetland	
Clearing Footprint		Hardwood Forest	
Project Footprint		Hardwood Wet Forest	
Proposed Turbine Locations		Mixedwood Forest	
		Mixedwood Wet Forest	
Transportation		Open Areas	
Unpaved Road		Open Wetland	
Water Features		Softwood Forest	
Mapped Watercourses		Softwood Wet Forest	
Mapped Wetlands		Urban/ Developed	
		Water	



Coordinate System: NAD 1983 UTM Zone 20N
 Sources: Esri, CGIAR, USGS, © OpenStreetMap (and) contributors, CC-BY-SA, GeoNOVA, SNSIS, NSNRR, ACCDC, IBA Canada, CNW, HERE, Garmin, USGS

Date:	2026-06-11	Project #:	25-11682
Scale:	1:15,000	Drawing #:	10.1B
Drawn By:	K. Wallace		
Checked By:	A. Doane		

