







ALVA CONSTRUCTION LIMITED

HARTVILLE QUARRY EXPANSION

Hartville, WWHRM
Nova Scotia

Property Ownership

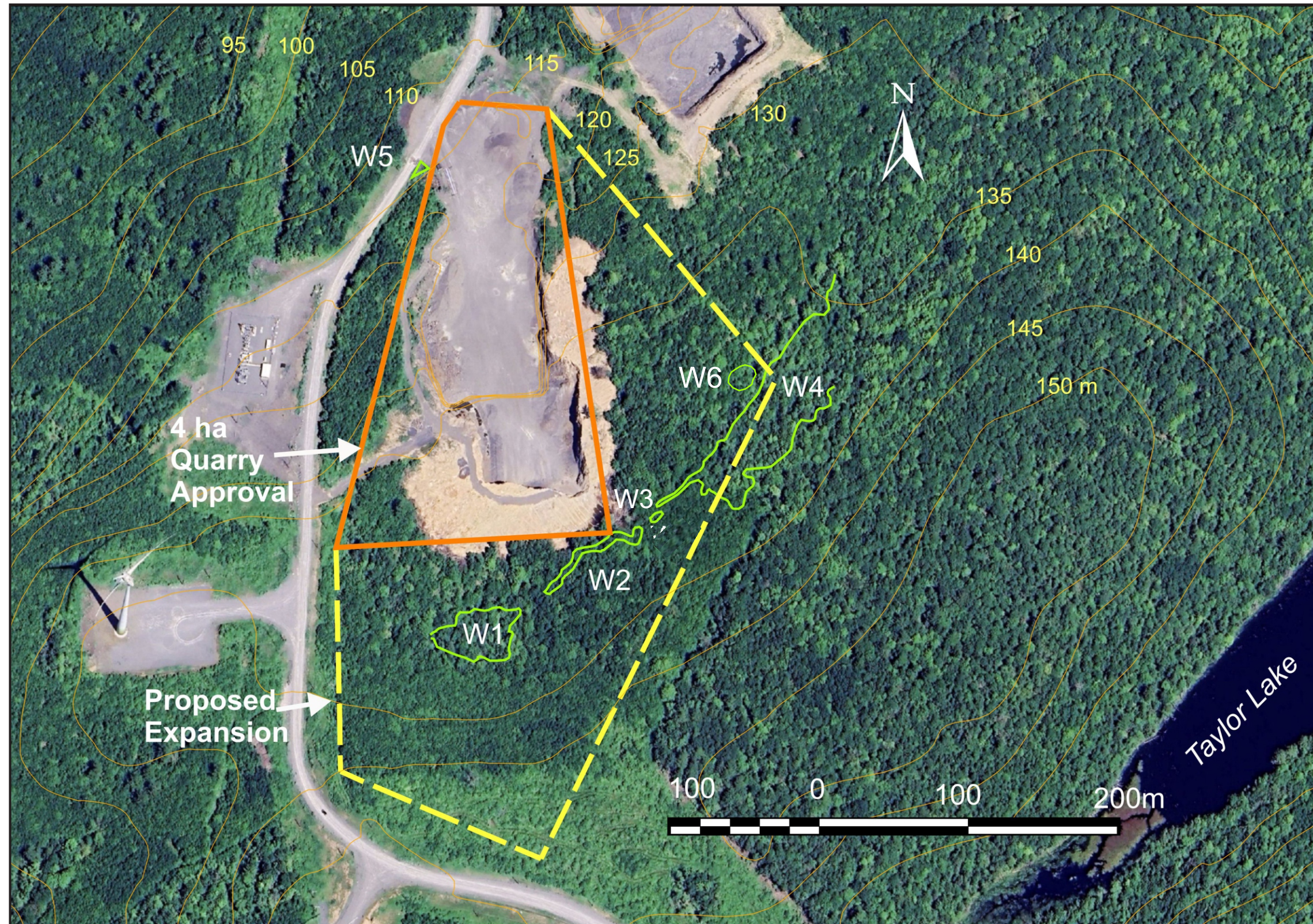
LEGEND

-  Existing 4.0 ha Quarry
-  EA Study Area
-  800 m Buffer
-  Crown Land
-  Elevation Contour (m)
-  PID 12345678

Map by:
Envirosphere Consultants Limited.
Windsor, Nova Scotia, January 2024
Property Mapping, Province of N.S.,
Geomatics Centre,
Updated March, 2023.



Map A-2



ALVA CONSTRUCTION LIMITED

HARTVILLE QUARRY EXPANSION

Hartville, WWHRM
Nova Scotia

Wetlands

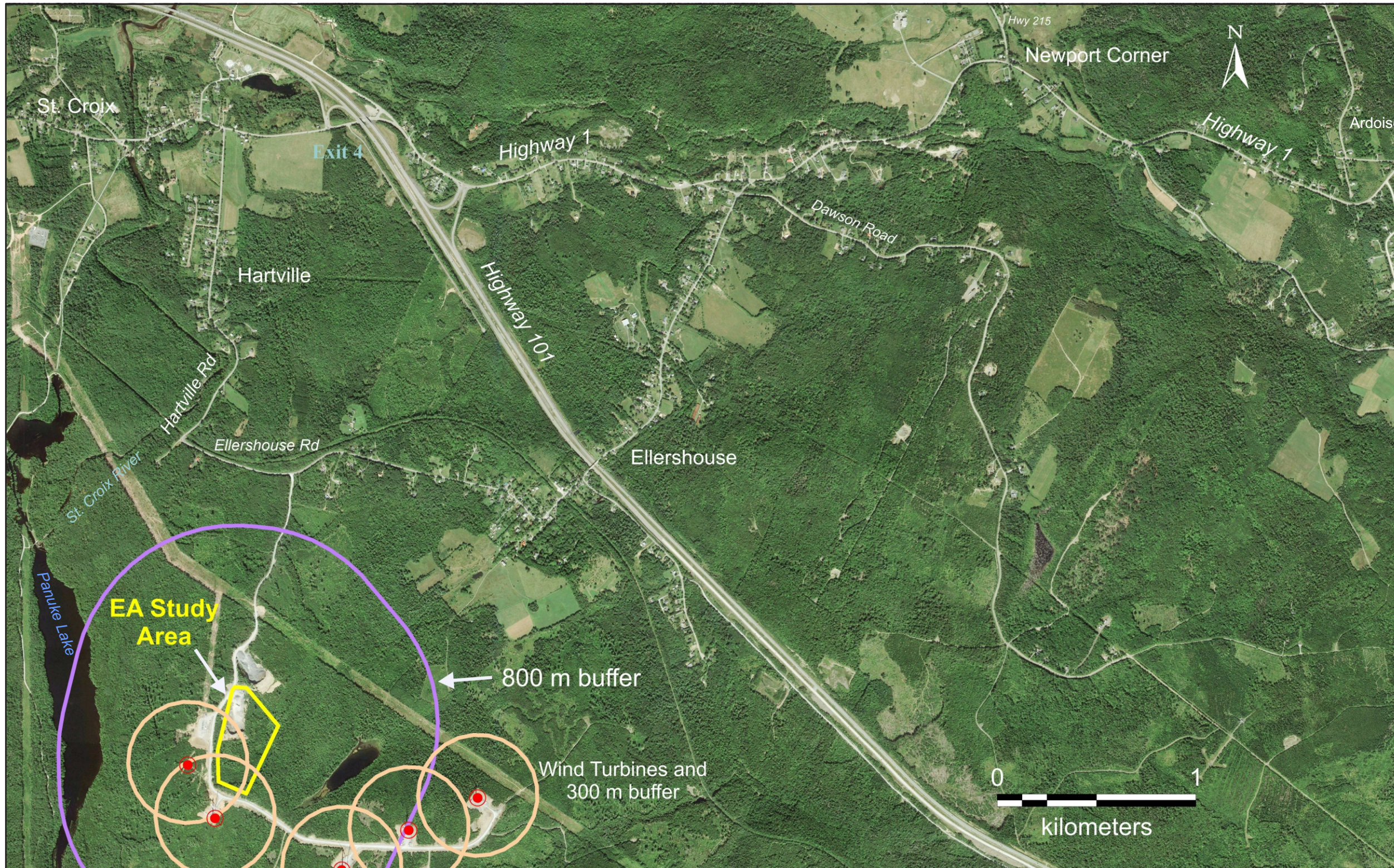
LEGEND

- Approximate Wetland Boundary
 - Elevation Contour (m)
 - W1** Basin Swamp (0.16 ha)
 - W2** Drainageway Swamp (0.04 ha)
 - W3** Drainageway Swamp (0.004 ha)
 - W4** Drainageway Swamp (0.15 ha*)
 - W5** Graminoid Marsh (0.0025 ha)
 - W6** High Shrub Bog (0.017 ha)
- * Area within proposed expansion boundary

Map by:
Envirosphere Consultants Limited.
Windsor, Nova Scotia, September 2023
Based on site visits July 7,13,14 and
September 14, 2023.



Map A-4



ALVA CONSTRUCTION LIMITED

HARTVILLE QUARRY EXPANSION

Hartville, WWHRM, Nova Scotia

Land Use

- ▬ Study Area
- ▬ 800 m Buffer
- ▬ 300 m Buffer
- Wind Turbine

Image Source: Google Earth, September 2015

Map A-5

