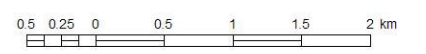


Data Source: EDM, HRM
 Projection: 3°MTM, Zone 5
 Horizontal Datum: ATS77
 March 2006

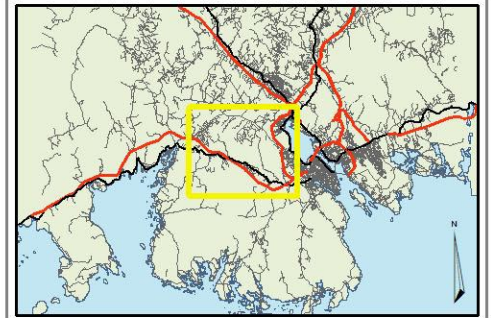
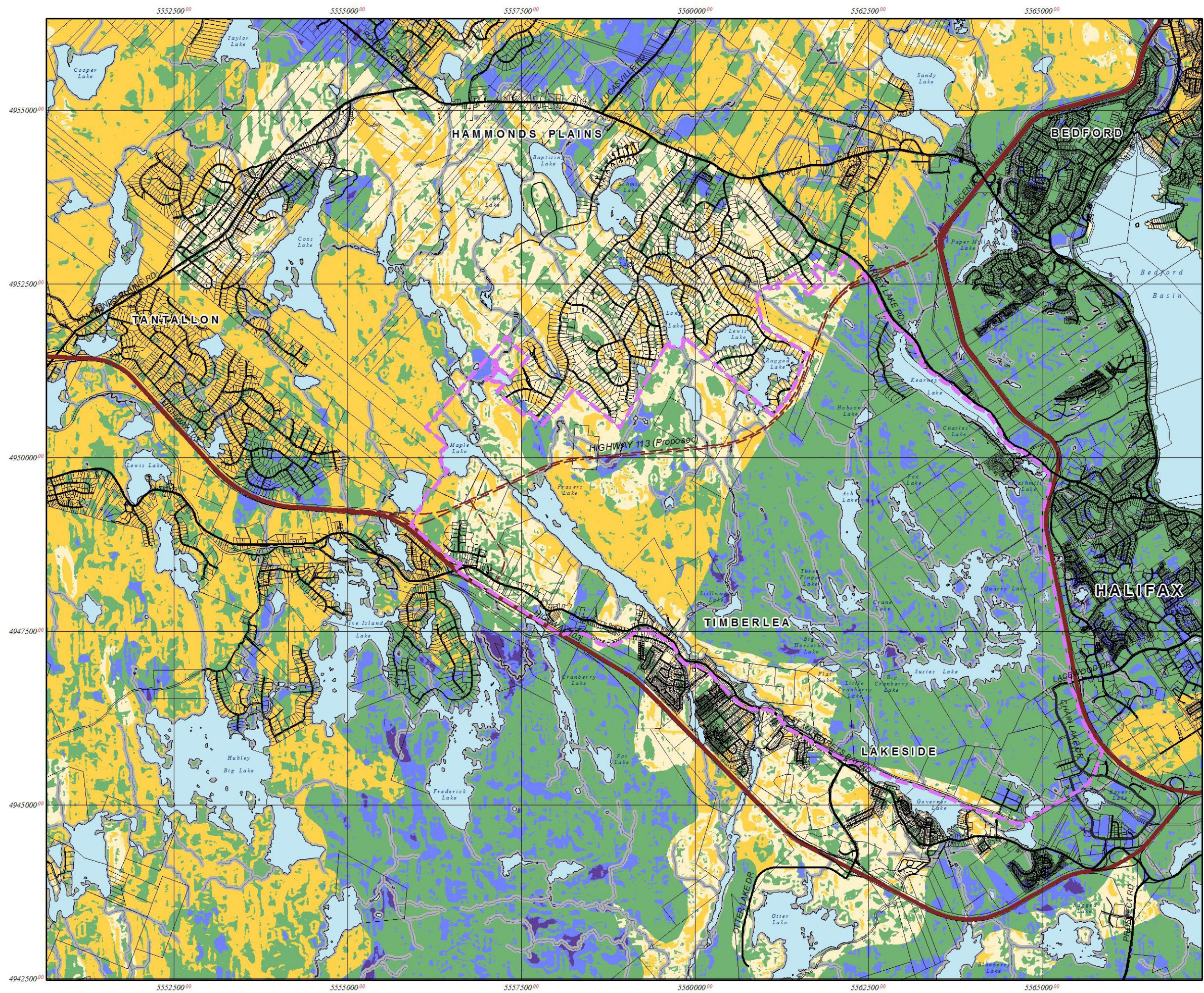
Figure 11
 Water Protection

- Least Sensitive
-
- Most Sensitive
- 30m Buffer

Prepared By:  EDM
 Prepared For:  HALIFAX REGIONAL MUNICIPALITY
 NOVA SCOTIA



BLUE MOUNTAIN/BIRCH COVE
 ASSESSMENT STUDY



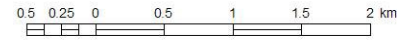
Data Source: EDM, HRM
 Projection: 3°MTM, Zone 5
 Horizontal Datum: ATS77
 March 2006

Figure 12
 Unserved
 Residential Suitability

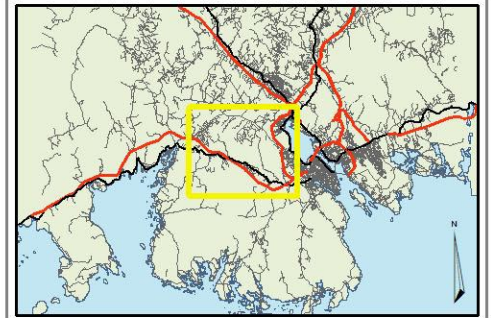
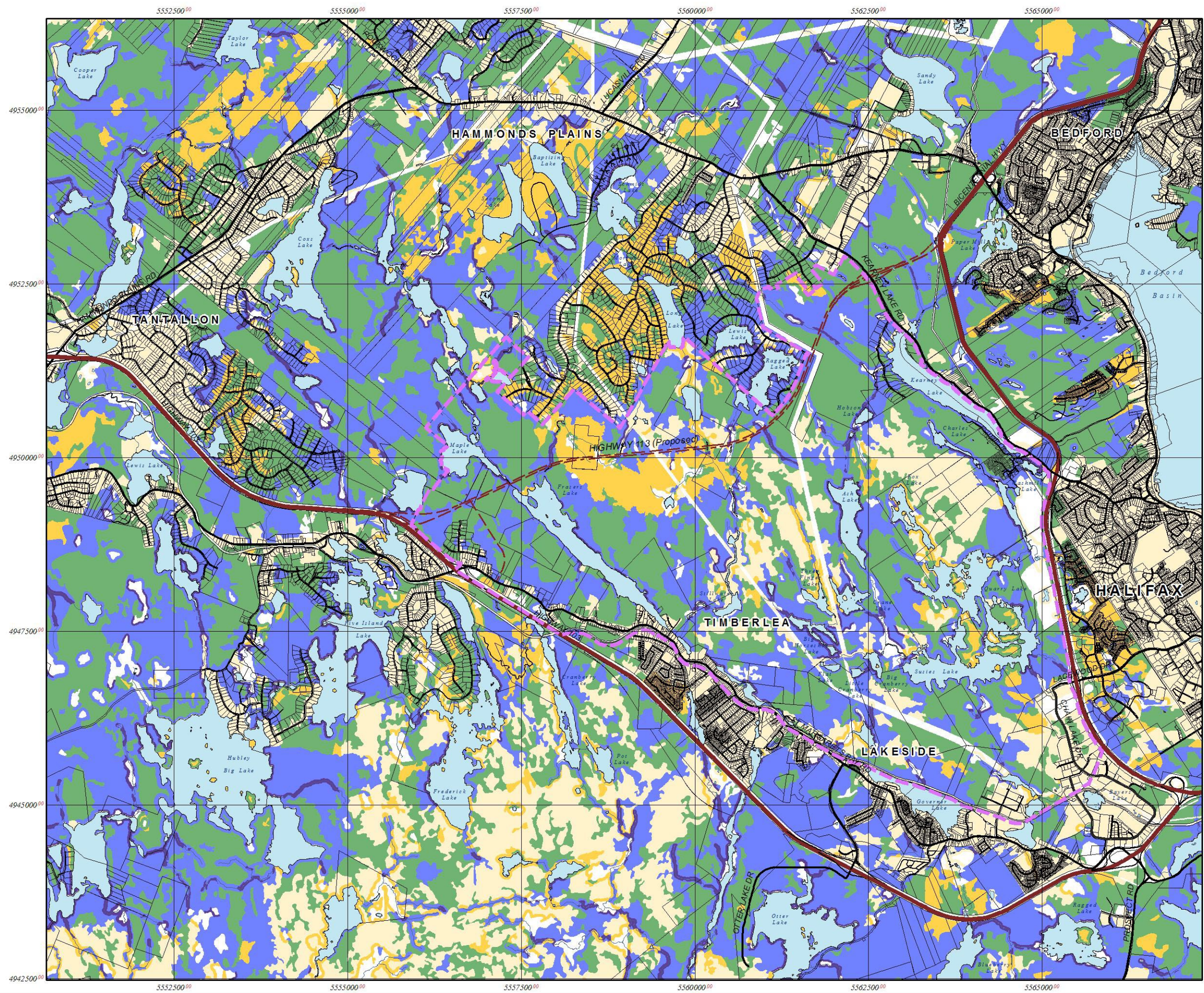
- High Potential
- Medium Potential
- Low Potential
- Very Low Potential
- 30m Watercourse Buffer

Prepared By:  EDM
 Environmental Design and Management Inc.

Prepared For:  HALIFAX REGIONAL MUNICIPALITY
 NOVA SCOTIA



BLUE MOUNTAIN/BIRCH COVE
 ASSESSMENT STUDY



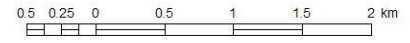
Data Source: EDM, HRM
 Projection: 3°MTM, Zone 5
 Horizontal Datum: ATS77
 March 2006

The following is a graphical representation and although care has been taken to ensure the best possible quality, EDM does not guarantee the accuracy of this document.

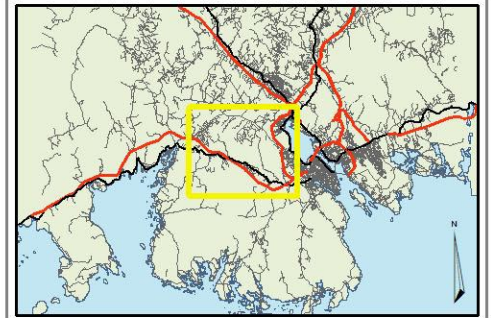
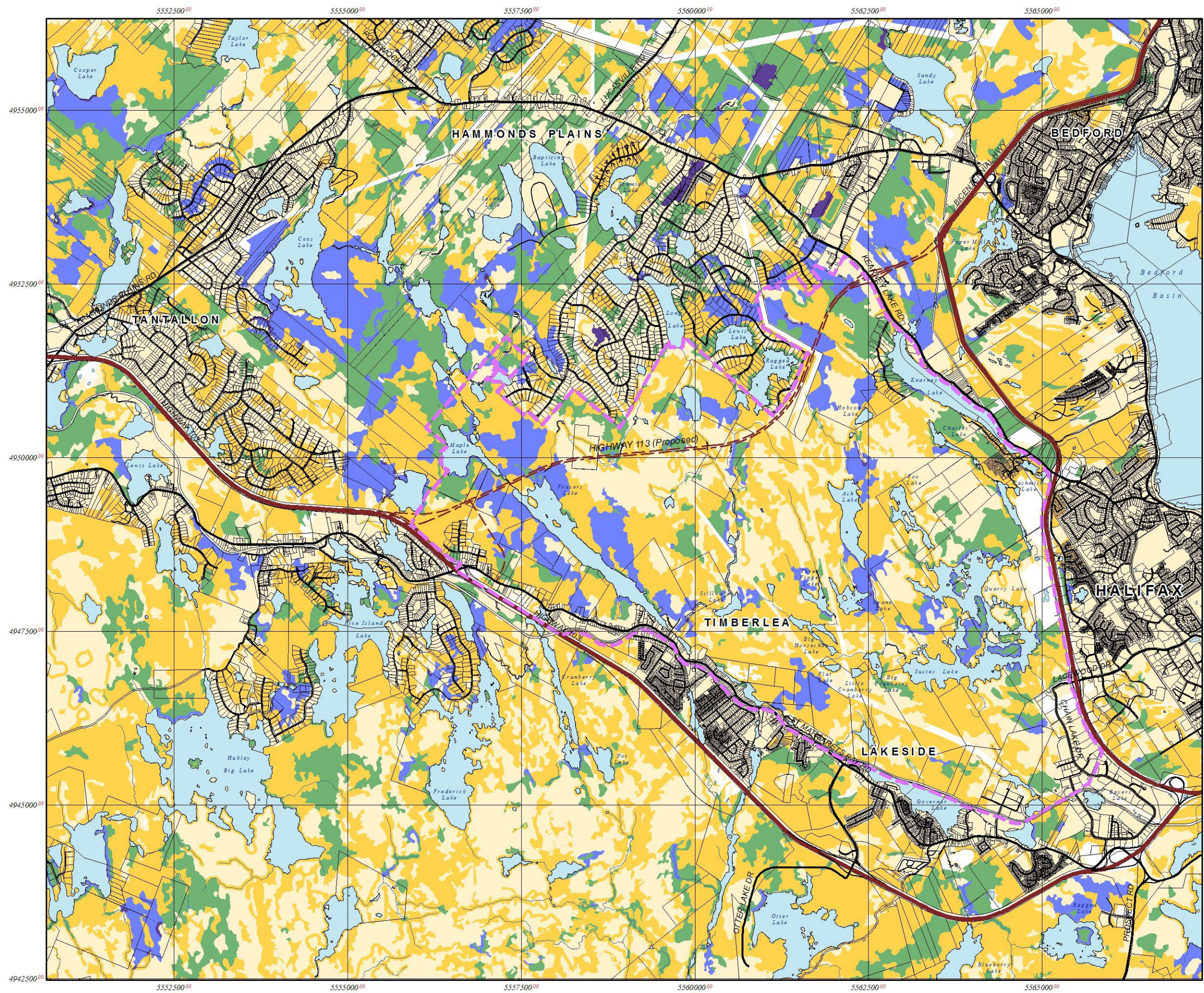
Figure 13
 Potential Mammal Habitat

Number of Species	Color
1-5	Light Yellow
6-10	Yellow
11-15	Light Green
16-20	Blue
21-25	Dark Purple

Prepared By: EDM
 Prepared For: HALIFAX REGIONAL MUNICIPALITY
 NOVA SCOTIA



BLUE MOUNTAIN/BIRCH COVE
 ASSESSMENT STUDY



Data Source: EDM, HRM
 Projection: 3°MTM, Zone 5
 Horizontal Datum: ATS77
 March 2006

The following is a graphical representation and although care has been taken to ensure the best possible quality, EDM does not guarantee the accuracy of this document.

Figure 14
 Potential Bird Habitat

Number of Species	Color
1 - 9	Light Yellow
10 - 18	Yellow
19 - 27	Light Green
28 - 36	Light Blue
37 - 47	Dark Blue

Prepared By: EDM
 Prepared For: HALIFAX REGIONAL MUNICIPALITY
 NOVA SCOTIA



BLUE MOUNTAIN/BIRCH COVE
 ASSESSMENT STUDY