

Steps involved in the operation of a Quarry continued...

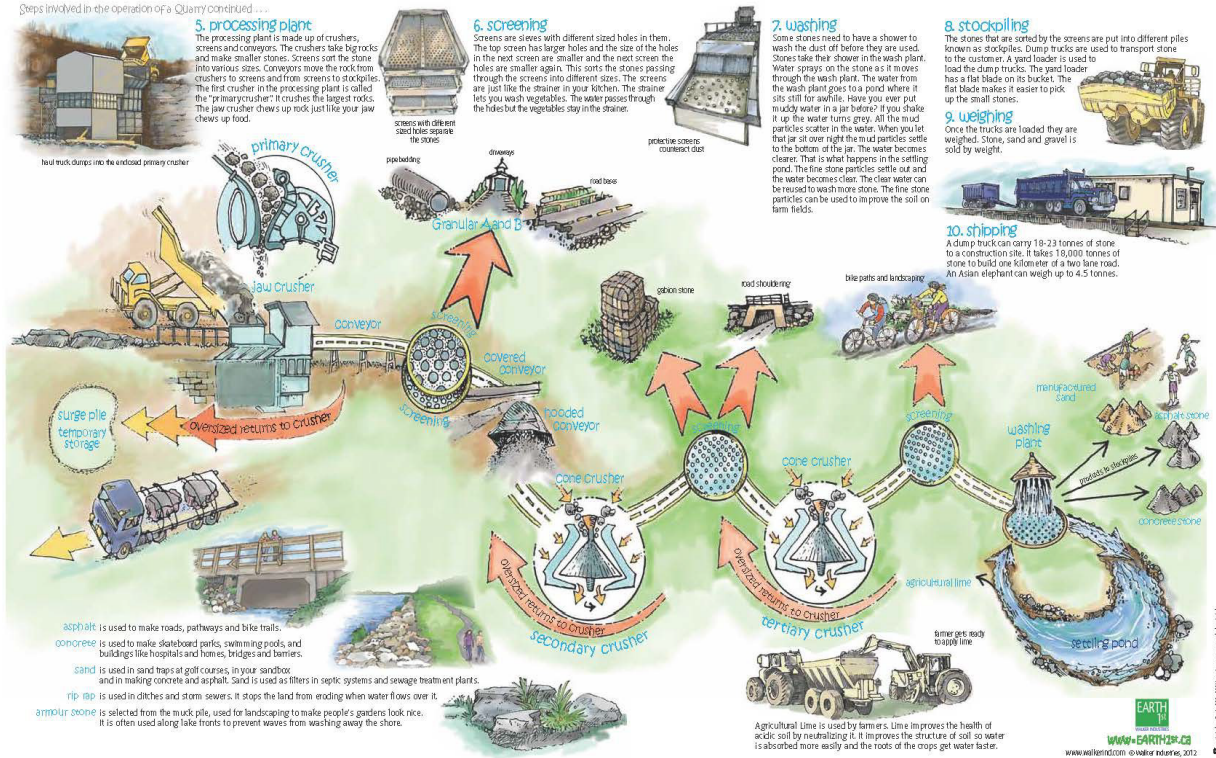


Figure 3. Cross section of quarry operations.

James C. Chapman, P.Eng
Chapman Bros. Construction Ltd.
32 Maplewood Drive
New Glasgow, NS B2H 5Y2

19 November 2024

Councillor Lisa Patton, Colchester County District #8
Municipality of Colchester
1 Church Street
Truro, Nova Scotia B2N 3Z5

Re: Chapman Bros. Construction Limited, Kemptown Quarry Development, 1417 Kemptown Road, Upper Kemptown, Colchester County, Nova Scotia. Class 1 Undertaking – Environmental Assessment, Under Section 9(1) of the Nova Scotia Environmental Assessment Regulations.

Councillor Patton,

I'm writing to let you know that Chapman Bros. Construction Ltd. intends to register an expansion of its Kemptown aggregate quarry as a Class 1 undertaking under Section 9(1) of the Environmental Assessment Regulations under the *Environment Act*. As part of the process, we are contacting members of the public including government officials, local residents, and the Mi'kmaq to inform them of the project and invite their input and comment.

Chapman Bros. Construction Ltd. is a construction company which operates aggregate quarries throughout Nova Scotia, which are an important source of aggregate material for many local and regional projects. The Kemptown site is in the community of Upper Kemptown, Colchester County, approximately 20 km northeast of Truro and roughly the same distance from Tatamagouche. The company wishes to continue operating the quarry and to expand its footprint in upcoming years, requiring an approval from the Province of Nova Scotia. The scope of operations for the quarry is not expected to change from the present. An Environmental Assessment has been conducted, as required under Part IV of the Nova Scotia Environment Act. The current approved quarry is located at 1417 Kemptown Road, Upper Kemptown, Colchester County, Nova Scotia (PID 20343422).

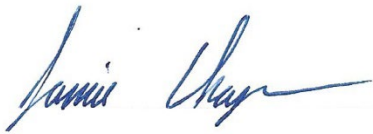
Envirosphere Consultants Ltd. of Windsor, Nova Scotia, is preparing an Environmental Assessment Registration Document that includes information regarding the environmental and socio-economic implications of the Kemptown Quarry, with an anticipated submission to Nova Scotia Environment and Climate Change (NSECC) in early spring 2025. At that time, the document will become available online and at two publicly accessible locations (e.g. Kemptown Community Center and the Truro Municipal office) for review and comment for a 30-day period. A public notification will also appear in the Chronicle Herald and

the Truro Daily News on the registration date with details of the quarry expansion project and availability of the registration document.

The nearest Mi'kmaq communities to the Kemptown Quarry are Millbrook and Sipekne'katik, located near Truro and Shubenacadie and 24 km and 72 km from the quarry site respectively. Davis MacIntyre & Associates completed an Archeological Resource Impact Assessment (Heritage Research Permit A2023NS159) in October 2023, which concluded that no archaeological sites or features were encountered within the study area boundaries.

Chapman Bros. Construction Ltd. extends an invitation to meet and discuss details of the Kemptown Quarry project in the coming weeks. Please contact me at your convenience if you would like to schedule a meeting.

Sincerely,



James C. Chapman
Chapman Bros. Construction Limited
Phone: 902-969-9556
Fax: (902)- 687 -3545
jamie.chapman@chapmanbros.ca

cc: Councillor Sherry Martell, Colchester County District #7
Councillor Marie Benoit, Colchester County District #9



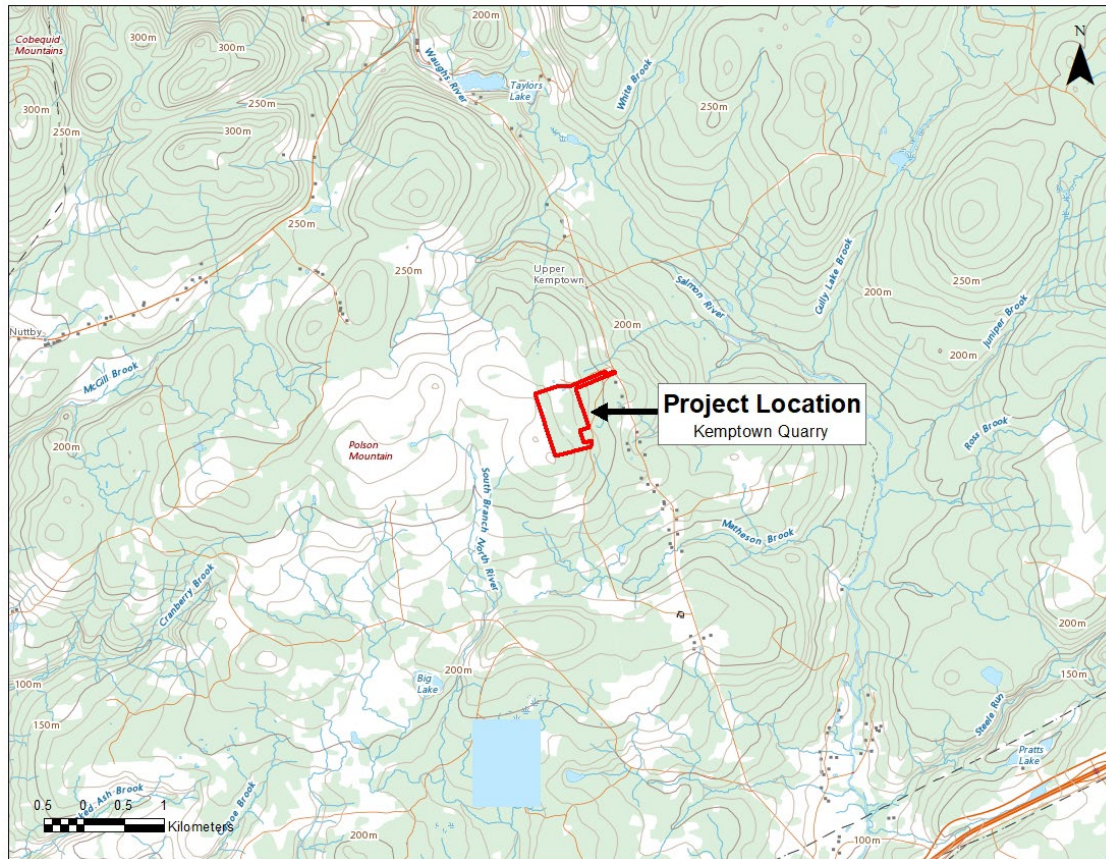


Figure 1. Project location shown on NTS 1:50,000.



Meet Wanda: Wanda wonders about WHY pits and quarries are needed and HOW they operate.

Everything we eat, drink, work and play with comes from the earth. That includes the materials we use to build our communities. Did you know some of the most important materials for building our communities are stone, sand and gravel – aggregates – that come from the earth? The roads we drive on, the arenas we skate in and the schools we learn in are built from stone, sand and gravel all from the earth.

Pit

Sand and gravel left behind by glaciers provides some of what we need to build our communities. Glaciers used to cover most of the earth. A glacier is a river of ice. As it moves it pushes millions of tonnes of earth. The freezing, thawing and scraping of the glacier breaks up the earth underneath it. When it melts, glaciers leave behind deposits of sand and gravel. It is this sand and gravel that is dug out in a pit and sold to construct our roads, bike paths, homes, swimming pools, and shopping malls.

Quarry

A quarry makes stone from the solid bedrock of the earth's crust. In a quarry, the glaciers have not done our work for us. Explosives are used to remove the solid rock.

A licence is required in order to establish a Pit or a Quarry.

In order to get a licence:

- There must be stone, sand or gravel (resources) in the location.
- The resource must be good enough to use for construction.
- There must be a plan for how the resources will be removed and processed.
- Potential impacts to the water, habitats, vegetation, animals and people must be assessed.
- A plan to protect the water, habitats, vegetation and animals must be provided.
- Where necessary a plan to monitor the water, habitats, vegetation and animals must be developed.
- A plan for the rehabilitation of the site must be provided.
- Technical experts review the information and decide whether it makes sense to issue the licence and approve the site plans.

The approved site plans instruct the pit or quarry owner how to operate. The quarry owners must monitor, check and inspect that they are operating as the site plan says. They also have to adapt their operations to protect the environment.

Steps Involved in the operation of a Quarry

1. stripping
2. drilling
3. blasting
4. hauling
5. processing
6. screening
7. washing
8. stockpiling
9. weighing
10. shipping
11. rehabilitating

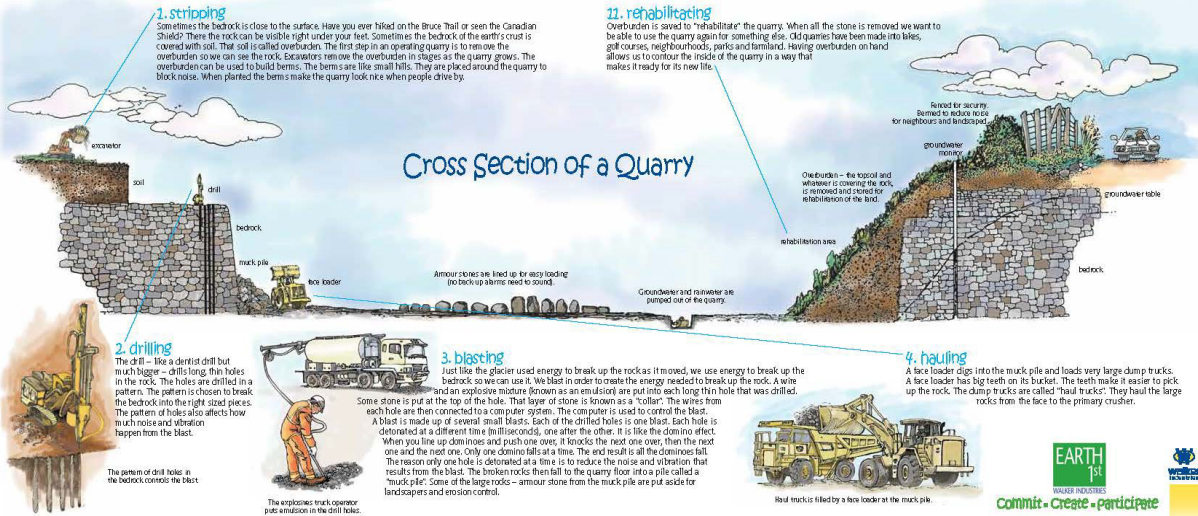


Figure 2. Cross section of quarry operations.

Steps involved in the operation of a Quarry continued...

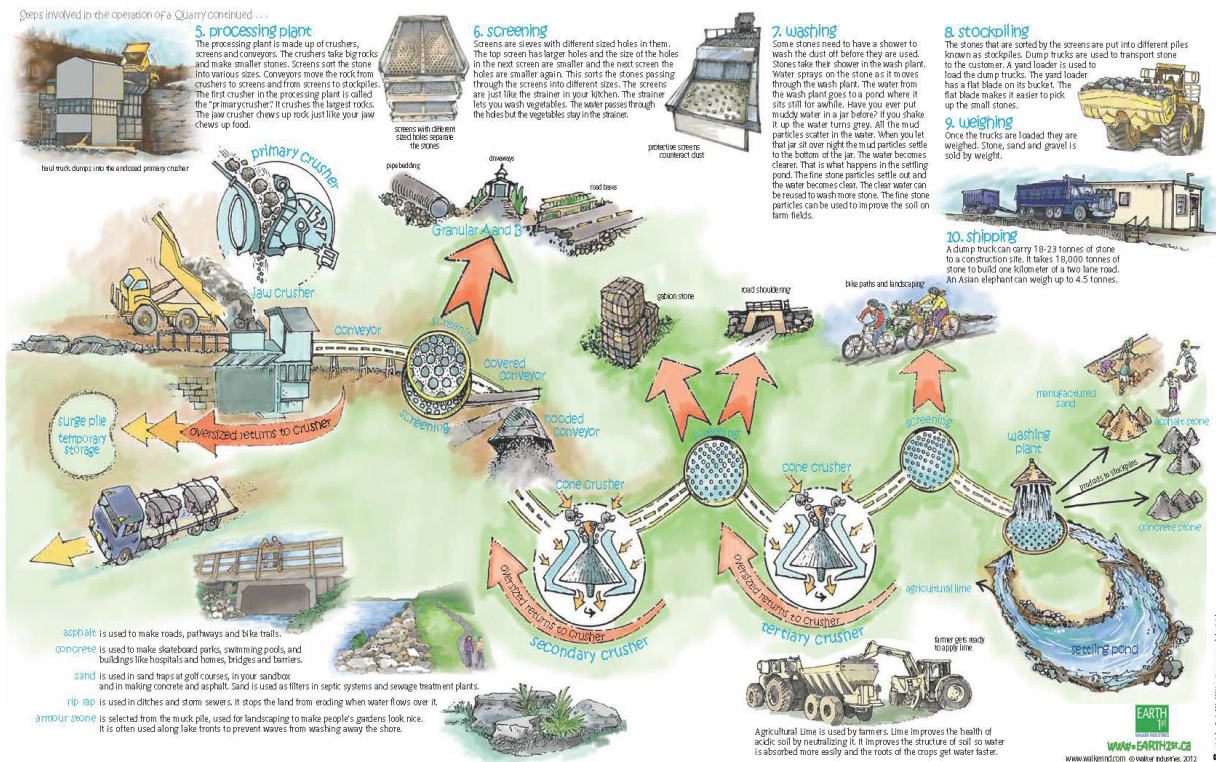


Figure 3. Cross section of quarry operations.