

APPENDIX A
ENVIRONMENTAL PROTECTION PLAN – TABLE OF CONTENTS

TABLE OF CONTENTS

	Page
1.0 INTRODUCTION	1
1.1 Objectives	1
2.0 ENVIRONMENTAL PROTECTION PLAN OVERVIEW	1
2.1 Project Background & Description	1
2.2 Scope of the Environmental Protection Plan	1
2.3 Regulatory Requirements	1
2.3.1 Federal Legislation	1
2.3.2 Provincial Legislation	1
2.3.3 Additional Regulations and Guidelines	1
2.3.4 Required Environmental Permits and Approvals	1
2.4 Project Components	1
2.5 Description of Activities	1
3.0 RESPONSIBILITIES & TRAINING	1
3.1 Roles & Responsibilities	1
3.1.1 Project Manager	1
3.1.2 Construction Manager	1
3.1.3 Area Leads	1
3.1.4 Environmental Consultant	1
3.1.5 Environmental, Safety & Health Manager	1
3.1.6 Environmental, Safety & Health Personnel	1
3.1.7 Public Communications Coordinator	1
3.1.8 Other Personnel	1
3.2 Environmental Awareness & Training	1
3.2.1 Environmental Awareness (Orientation)	1
3.2.2 Leadership Training	1
3.2.3 Additional Training	1
3.2.4 Site-wide Training	1
4.0 PROTECTIVE MEASURES	1
4.1 Air Quality & Dust Management	1
4.2 Archaeological Resources	1
4.3 Blasting	1
4.4 Electromagnetic Interference	1
4.5 Geohazards	1
4.6 Greenhouse Gas Emissions	1
4.7 Hazardous Waste Management	1
4.8 Non-Hazardous Solid Waste Disposal	1
4.9 Noise Management	1
4.10 Surface Water, Wetlands, and Fish & Fish Habitat	1
4.11 Vehicle Control	1
4.12 Erosion & Sedimentation Control Plan	1
4.13 Terrestrial Habitat and Wildlife Management Plan	1
5.0 CONTINGENCY & EMERGENCY RESPONSE	1
5.1 Air Quality & Dust Management	2
5.2 Archaeological Resources	2
5.3 Blasting Protocols	2
5.4 Erosion and Sediment Control	2
5.5 Spills and Waste Disposal	2

5.6	Noise Management.....	2
5.7	Fire Protocols.....	2
5.8	Vehicle Control	2
5.9	Wildlife Management Plan	2
6.0	COMMUNICATION STRATEGY.....	2
6.1	Communication Strategy	2
6.1.1	General Communications	2
6.1.2	Progress and Environmental Reporting Procedures	2
6.2	External/Public Communications.....	2
6.2.1	Public Interaction	2
6.2.2	Public Enquiry Telephone Line.....	2
6.2.3	Public Notifications	2
6.2.4	Project Website.....	2
6.2.5	Complaint Resolution Plan	2
6.2.6	Public Communications Database.....	2
6.3	Non-Emergency Contact Lists.....	2
6.4	Emergency Communications Strategy	2
7.0	ENVIRONMENTAL COMPLIANCE & MONITORING.....	2
7.1	Environmental Compliance Monitoring.....	2
7.1.1	Regulatory Compliance Monitoring	2
7.1.2	Self-Compliance Monitoring.....	2
8.0	DOCUMENTATION & REVISIONS	2
8.1	Revisions	2
8.2	Records.....	2
9.0	STATEMENT OF QUALIFICATIONS AND LIMITATIONS.....	2
10.0	REFERENCES	2

LIST OF TABLES

To be Determined

LIST OF FIGURES

To be Determined

LIST OF APPENDICES

To be Determined

APPENDIX B
ENGAGEMENT

MI'KMAQ ENGAGEMENT



Membertou
WELCOMING THE WORLD!

October 10, 2023

RE.: Support for Wind Strength Environmental Assessment

To Whom It May Concern:

As the leadership of the Membertou community, our role is to serve our community in many capacities, including strong governance, and skilled administration of the programs and services necessary for our people. Over the last three decades, we've been working diligently every day to build economic prosperity to ensure that not only can we provide the necessities for our community, but we can break generational cycles of poverty.

In our efforts towards growth, Membertou created the *Membertou Development Corporation*, which today is home to thirteen corporate business entities, and also encompasses various partnerships and ownership models; all of which directly benefits the people of our community. Commercial revenues generated in Membertou work in a cooperative model, which sees profits reinvested back into our people, and our businesses. Wind Strength is one those projects, which will have significant impact for two very important reasons:

1. Wind Strength will support Canada, Nova Scotia (Mi'kma'ki), and the world's transition to green energy. As Mi'kmaq, and first peoples of this land, we are incredibly passionate about our role in stewardship for the lands and waters of our territory.
2. Wind Strength's eventual revenue model will follow our Membertou model; revenues generated from this project will come back to our community to directly support our people.

We are supportive of this project, and know that its potential will have positive impacts for the future. In Mi'kmaq culture, we value preservation of our lands for the next seven generations. The actions we take today, will determine what is inherited by our children and grandchildren for years to come.

Please accept this letter with full support for Wind Strength's Environmental Assessment from our Chief & Council. Please do not hesitate to reach out to us about details surrounding the Wind Strength project at any time.

Wela'liq. Thank you.
Sincerely,

Membertou Chief & Council

GOVERNMENT ENGAGEMENT

strum

CONSULTING



Nuttby Ridge Wind Project

July 6th, 2023

Presentation to NSECC's EA Branch

Agenda



- Introduction
- Status
- Timeline
- Questions



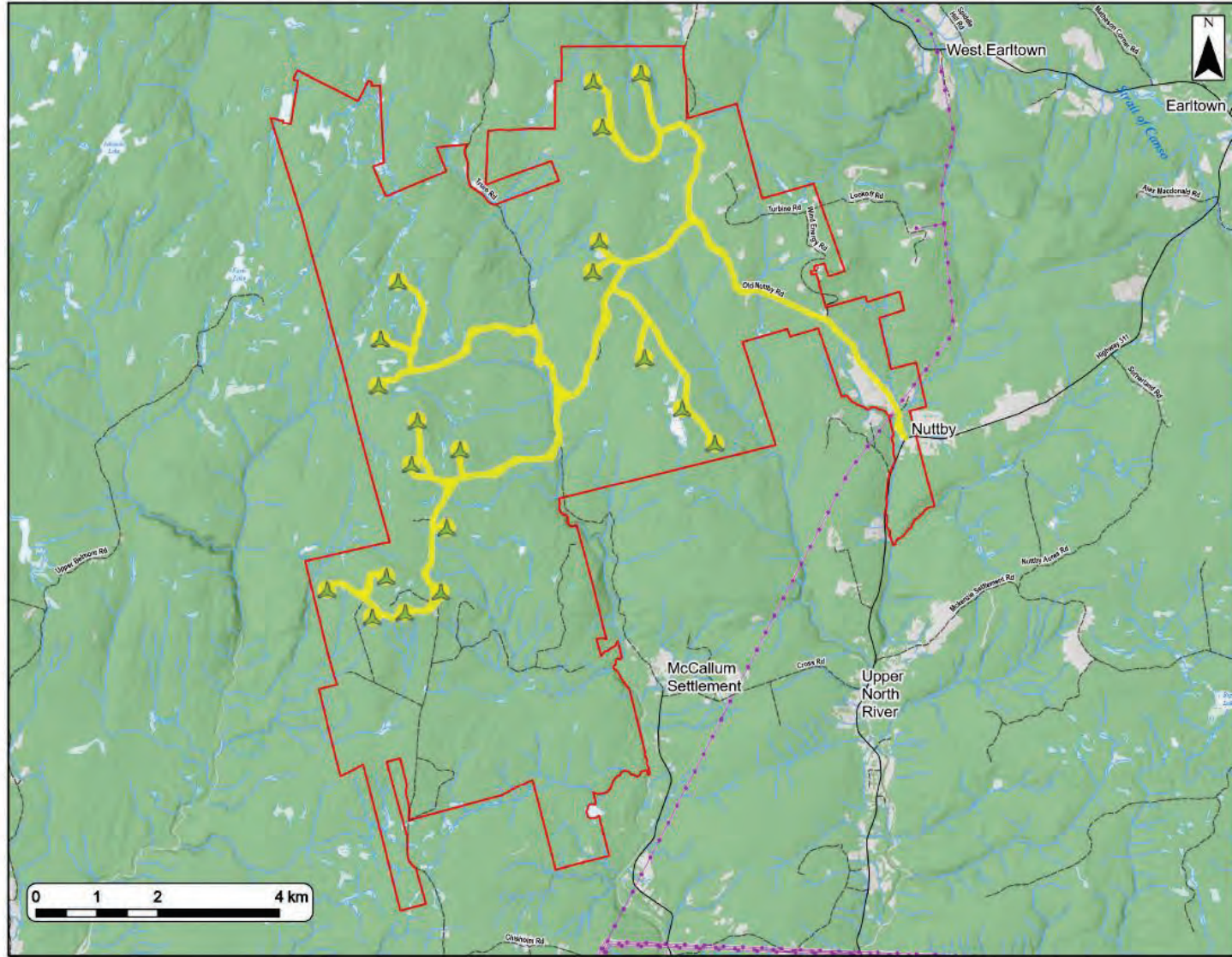
Project Team

- Membertou FN is Majority Shareholder
- Everwind Fuels as a Minority Stakeholder
- Developed and Operated by RES Group
- Strum Supporting with EA Preparation and field studies
- Some component studies undertaken by sub-consultants and contractors



Location - Nuttby Ridge Wind Project

- Directly to the West of the existing Nuttby Mountain Wind Farm
- 20 turbines, approximately 100MW
- Colchester County
- Crown and Private Lands



Nuttby Ridge Wind Farm Site Overview

Study Area	
Assessment Area	
Proposed Turbine Location	
Transportation	
Road	
Unpaved Road	
Utilities (line)	
Existing Transmission Lines	
Water Features	
Mapped Stream	
Mapped Indefinite Stream	
Mapped Wet Area	



<small>Copyright Survey 19991 (19) Date 2023</small>		<small>Source: Can Esri/Mapbox, OpenStreetMap contributors, Swatch Communications</small>	
Date:	July 2023	Project #:	23-9127
Scale:	1:60,000	Drawing #:	X
Drawn By:	E. Johnson		
Checked By:	M. Savelle		



Field Studies



- Completed
 - Avian (year 2 in progress)
 - Bats (year 2 in progress)
 - Lichens (targeted to high quality habitats)
 - Aquatics (turtles, fish, fish habitat)
 - Vegetation and Terrestrial habitats
 - Terrestrial Fauna

Field Studies

- Field studies ongoing (2023)
 - Watercourses
 - Wetlands
 - Terrestrial Habitats
 - Old Growth
 - Archaeology (supplemental)



Consultation & Engagement

- Regulatory agency engagement to inform field studies (since late 2021/early 2022)
- Public and stakeholder engagement is ongoing
 - Two Public Information Sessions scheduled (open house format) for late July and late August/early September.
- MEKS currently being initiated with Membertou Geomatics Solutions

Timeline

- Field Studies completed
July
- EARD Preparation In
July/August/September
- EA Registration in
September 2023

Questions?



Kmtnuk Wind Farm Project

Municipality of the County of Colchester

Council Presentation



Agenda



WJU'S NEWIKNAQ
WIND STRENGTH

- Team Introduction
- Project Overview
- Work Done to Date
- Community & Stakeholder Engagement
- Community Benefits
- Next Steps



WJU'S NEWIKNAQ
WIND STRENGTH



Memberton
WELCOMING THE WORLD





Team Introduction



Wind Strength is a company formed by Membertou, a Mi'kmaq Community, in order to develop, own and operate renewable energy assets. Membertou is the majority owner of the Bear Lake Wind Farm.



Membertou is an urban and progressive Mi'kmaq community located on Unama'ki – Cape Breton Island. With a strong focus on community growth through economic development, the spirit of Membertou is driven by its close-knit and vibrant people.



EFW was founded in 2022 and is currently developing a multi-phased, multi-billion dollar green ammonia production, with the first phase expected to be operational late 2025. EFW is a minority equity partner in Bear Lake Wind Farm.



RES has been engaged as Project. RES is the world's largest independent renewable energy company. At the forefront of the industry for over 40 years, RES has delivered more than 23GW of renewable energy projects across the globe including onshore and offshore wind, solar, energy storage and transmission and distribution.



Strum Consulting is a Nova Scotia based environmental consultancy company with a professionally skilled team that focuses on a multitude of development-related projects across Atlantic Canada. Strum has extensive experience in environmental surveys and environmental assessments (EAs) as well as permitting at the federal, provincial and municipal levels.



Project Overview – Project Location



WJU'SNEWIKNAQ
WIND STRENGTH



WJU'SNEWIKNAQ
WIND STRENGTH



Memberton
WELCOMING THE WORLD





Project Overview – Project Description



Key Project Characteristics	
Location	Colchester - Nova Scotia
Land	Private & Crownland (Majority Crown Land).
Number of Wind Turbine Generators (WTG)	14-16 WTGs depending on model chosen
Total Generator Capacity	Up to 98 MW
Point of Interconnection	230 kV NSPI transmission line.
Interconnection Studies	System Impact Study Completed.
Electricity Off-taker	Nova Scotia Power Incorporated (NSPI) with transmission services to provide power to EWF Phase 1 Green Hydrogen and Ammonia Facility.
Colchester Project Permit	Q1 2024/ As soon as possible
Construction Start (Clearing + Roads)	Q3 2024
Proposed Commercial Operations Date (COD)	Q4 2025
BoP O&M Agreement	Renewable Energy Systems Canada Construction (RESCC)





Environmental Surveys – Study Area



WJU'S NEWIKNAQ
WIND STRENGTH

The project is submitting to the province's rigorous Environmental Assessment (EA) process, which includes a comprehensive analysis of the potential environmental impacts of the project.

Detailed studies including:

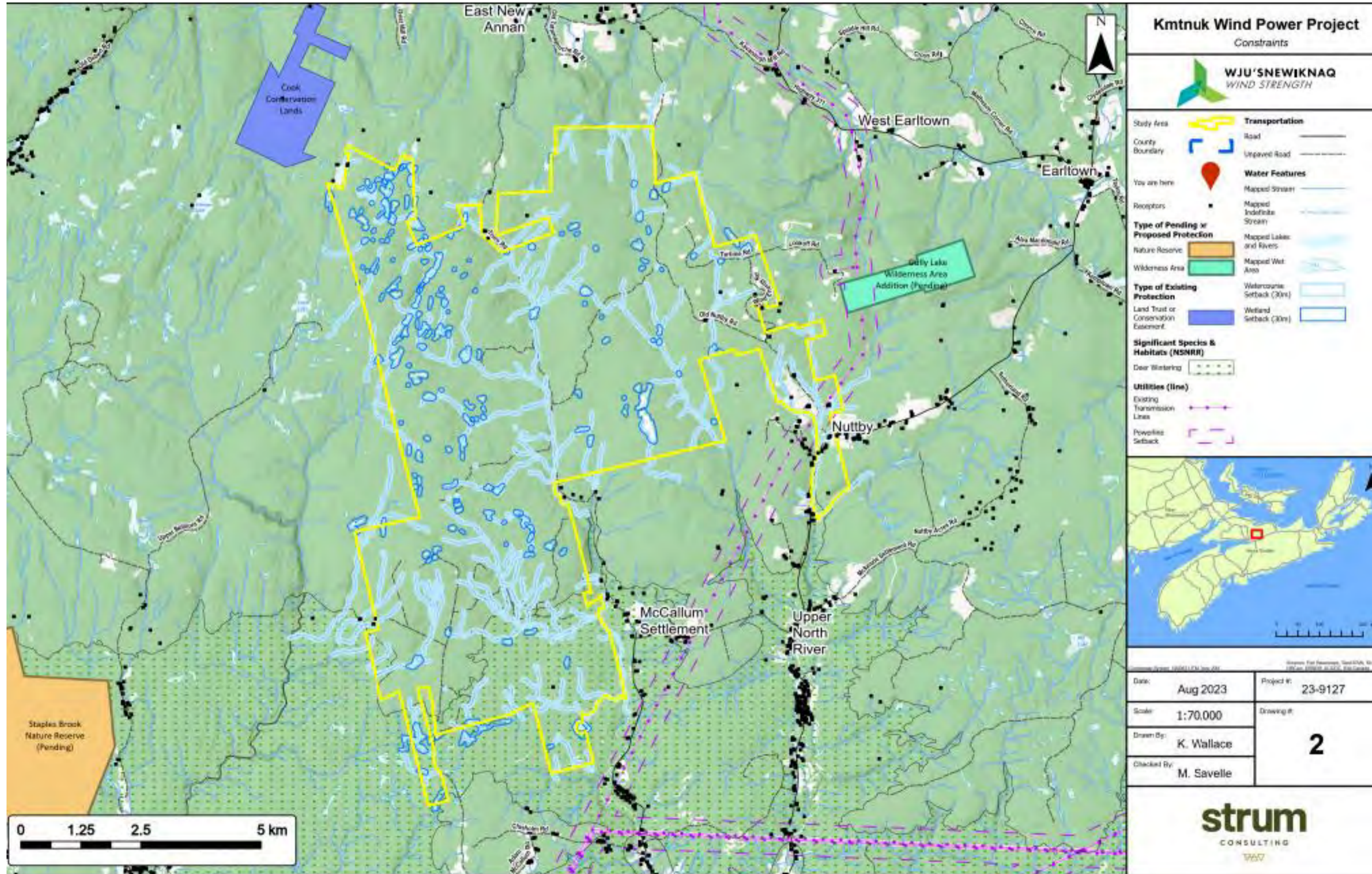
- Watercourse and Wetland Surveys
- Vegetation and Habitat Surveys
- Bird and Bat Surveys
- Moose Surveys
- Sound and Visual Assessments
- Electromagnetic Assessments
- Archaeological Assessments
- Telecommunication Assessments
- Mi'kmaq Environmental Knowledge Study (MEKS)



Environmental Surveys – Study Area



WJU'SNEWIKNAQ
WIND STRENGTH



Kmtuk Wind Power Project
Constraints

WJU'SNEWIKNAQ
WIND STRENGTH

Study Area

County Boundary

You are here

Receptors

Type of Pending or Proposed Protection

Nature Reserve

Wilderness Area

Type of Existing Protection

Land Trust or Conservation Easement

Significant Species & Habitats (NSNRR)

Deer Wintering

Utilities (line)

Existing Transmission Lines

Powerline Setback

Transportation

Road

Unpaved Road

Water Features

Mapped Stream

Mapped Indefinite Stream

Mapped Lakes and Rivers

Mapped Wet Area

Watercourse Setback (30m)

Wetland Setback (30m)

Map Information

Date: Aug 2023

Project #: 23-9127

Scale: 1:70,000

Drawing #: 2

Drawn By: K. Wallace

Checked By: M. Savelle

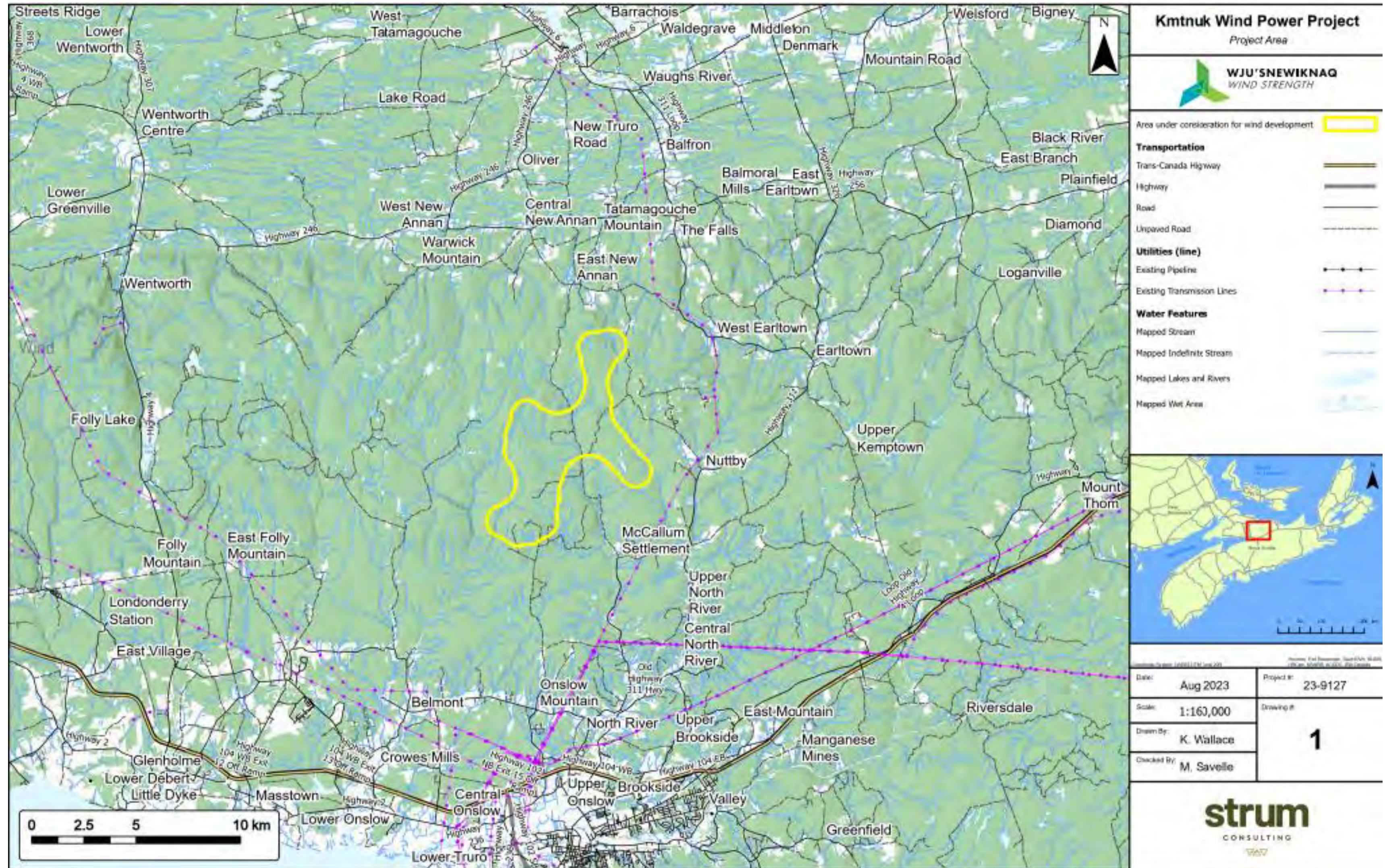
strum
CONSULTING



Environmental Surveys – Development Area



WJU'SNEWIKNAQ
WIND STRENGTH

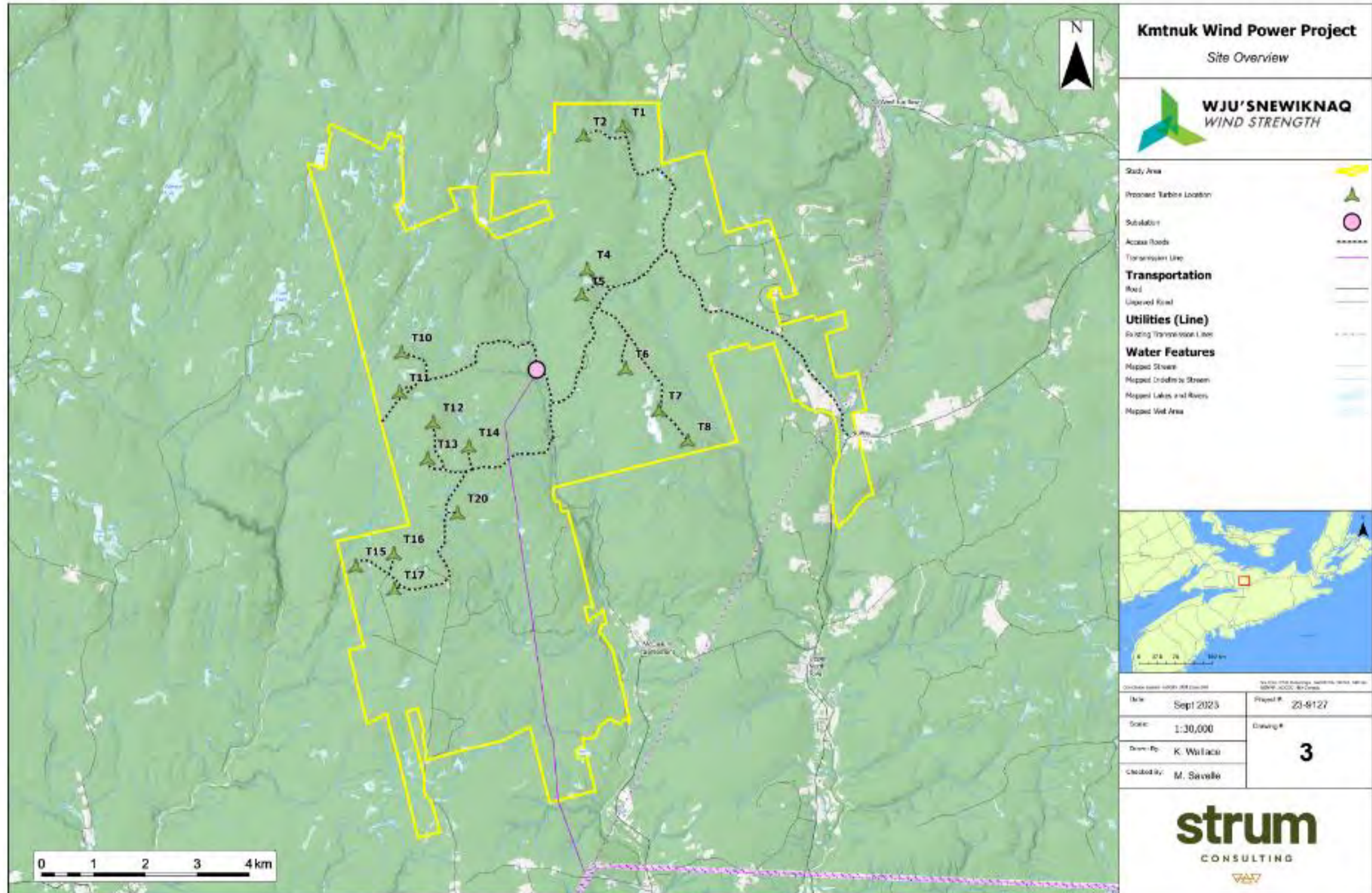




Project Layout



WJU'SNEWIKNAQ
WIND STRENGTH

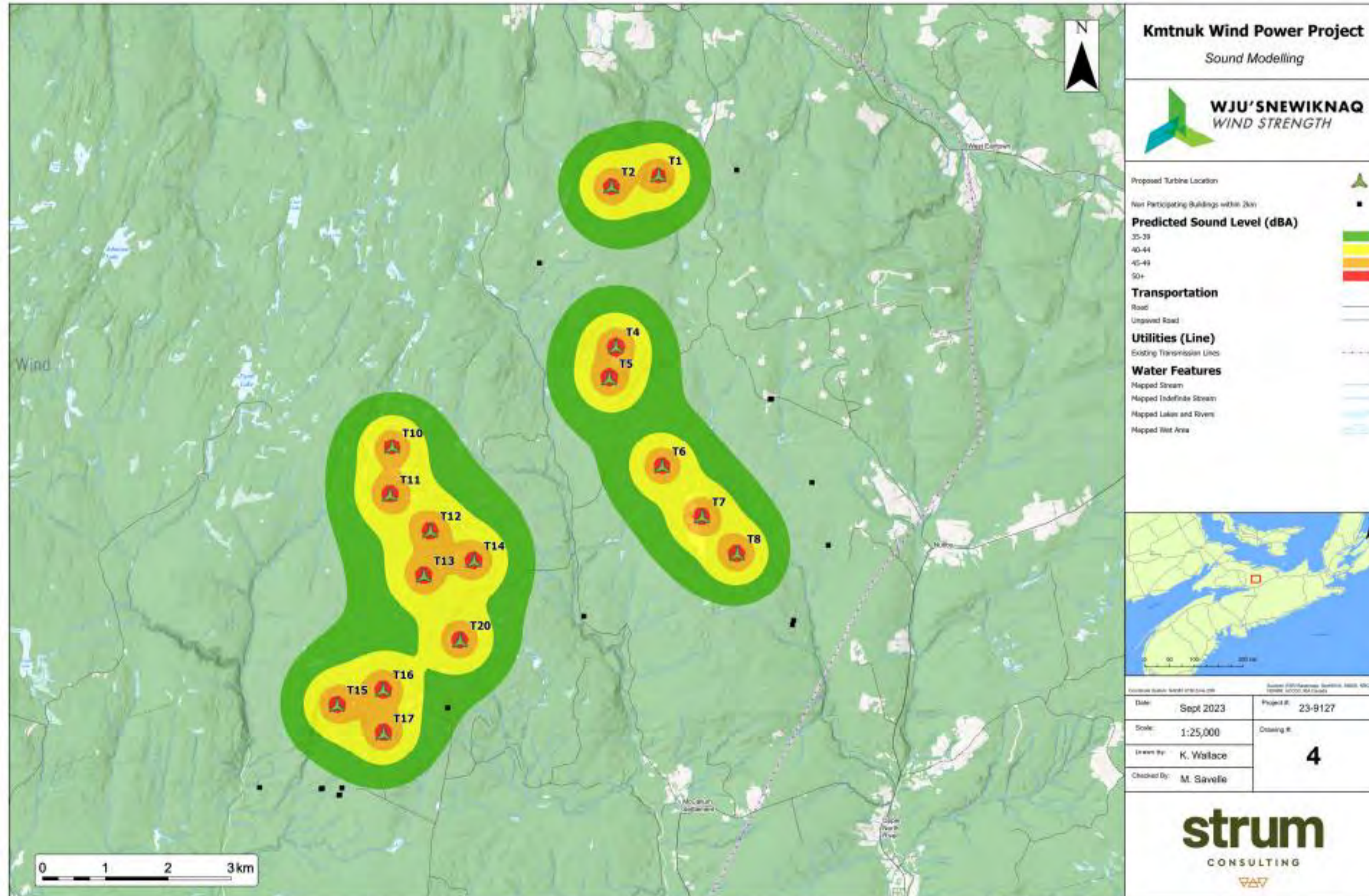




Environmental Surveys – Noise Study



WJU'SNEWIKNAQ
WIND STRENGTH

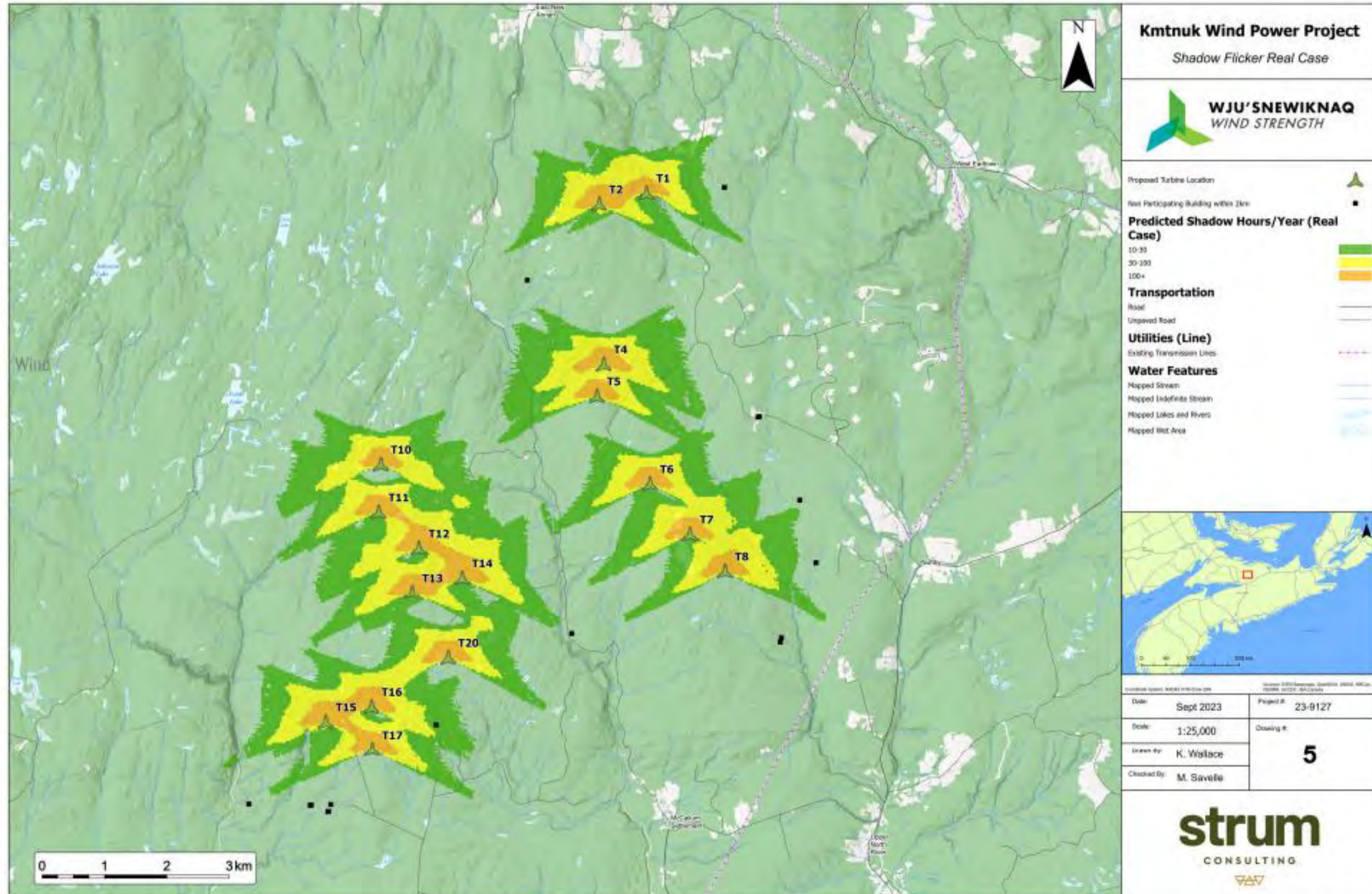




Environmental Surveys – Shadow Flicker



WJU'SNEWIKNAQ
WIND STRENGTH





Work Done To Date

- Environmental Surveys.
- Wind measurement campaign ongoing. To be complemented by the installation of an additional Met Tower.
- Initial Project Design Completed.
- Meetings with Colchester Development Manager.



Community & Stakeholder Engagement



WJU'S NEWIKNAQ
WIND STRENGTH

- Stakeholder and Community Engagement Initiated and Ongoing. This includes government, stakeholder groups and community.
- First Nations Consultation Initiated and Ongoing. This includes all Mi'kmaq communities, KMKNO and other First Nation organizations.
- Councilors, MLAs and MPs for the area have been contacted and meetings have been held with most.
- Over 30 stakeholder groups at the federal, provincial and municipal level have been contacted and one-on-one meetings are ongoing.



WJU'S NEWIKNAQ
WIND STRENGTH



Memberton
WELCOMING THE WORLD



EVERWIND
FUELS





Community & Stakeholder Engagement



- Initial Open House took place on August 23, 2023. Open House was 3 hours at the Earltown Community Centre.
- Second Open House took place on September 21, 2023. Open House was 5 hours at the Eartown Community Centre.
- First Open House consisted of an introduction to the Project feed back for Project Design.
- Second Open House presented the Project design and study results.
- All Open House materials are available at: https://kmtnukwind.com/project_documents





Community Benefits



Local tax revenues throughout the life of the project ~800,000/Year

Employment:

- 125-150 Temporary Jobs during construction
- 5+ Permanent Jobs during operations
- Committee for the Maximization of Local and First Nation Benefits

Electricity subsidy fund – Homeowners within proximity of the project will be eligible to receive a yearly subsidy

Community vibrancy fund – Will support community organizations near projects

Bursary fund – Will support local community members to train in the renewable energy industry



WJU'SNEWIKNAQ
WIND STRENGTH



Memberton
WELCOMING THE WORLD





Next Steps

- Met Tower Installation – October 2023
- Finalizing Project Design – September/October 2023
- Establish CMC in coordination with Development Officer – October/November 2023.
- EA Registration – October 2023



WJU'S NEWIKNAQ
WIND STRENGTH

Thank You!

PUBLIC & STAKEHOLDER ENGAGEMENT



WJU'SNEWIKNAQ
WIND STRENGTH



KMTNUK WIND POWER PROJECT

July 2023 Newsletter

ABOUT THE PROJECT

Wind Strength, a Membertou company, is planning to jointly develop with EverWind Fuels (EWF) the Kmt nuk Wind Project, a new 98 MW wind development in Nova Scotia. The project will harness the Province's world class wind resource and is being specifically developed to partially power EverWind Fuels' green hydrogen and green ammonia facility in Point Tupper, Nova Scotia. The project includes \$190 million of investment, the creation of local jobs, and meaningful steps towards economic reconciliation through indigenous ownership of green energy projects. The project derives its name from the Mi'kmaq word Kmt nuk (Gah-Mit-Nook), which means 'Where the Mountain is'.

Project details

The proposed project comprises up to 20 turbines, medium-voltage electrical cabling, a substation and access roads, located on private and Crown land. The project would be connected to a Nova Scotia Power 230 kV line, by way of a transmission line connecting to the project substation.

The project will be newly constructed zero-emission generation capacity that represents additional green power that would not have been built under the Province's recent Rate Base Procurement program. Prior to Wind Strength's acquisition of the Project and partnership with the EverWind green hydrogen and green ammonia production facility, development was paused and not scheduled for project completion.

Wind Strength and EverWind have engaged Renewable Energy Systems Canada Inc. (RES) as the project developer to develop, design, construct and operate the project. Wind Strength and EverWind have also engaged Strum Consulting (Strum) to complete the environmental studies and environmental assessment (EA) which is expected to be completed before the end of 2023.

The Project Development Team continues to study the site and how to minimize the impact of the development on habitat and wildlife and the local community.

WHY WIND?

Affordability

Thanks to the evolution of wind turbine technology and other factors, wind energy is the **lowest-cost option for new electricity generation in Nova Scotia** today, all sources combined.

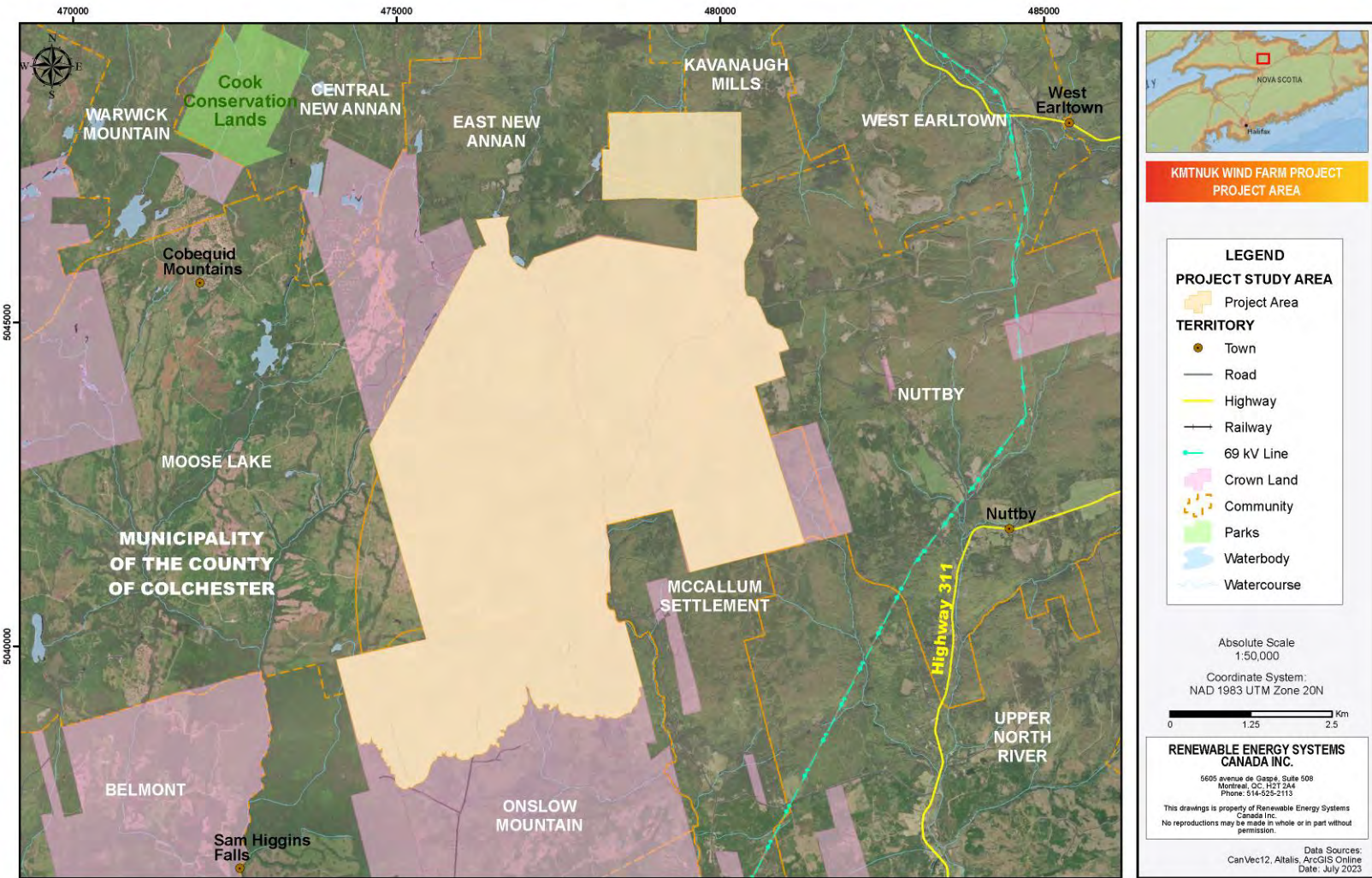
Environment

Wind energy produces no carbon emissions or other air contaminants. It is a key solution to fighting climate change.

Community

Wind projects benefit local communities through economic development, job creation, training, lease payments to local landowners and tax payments to the host communities.

PROJECT AREA MAP

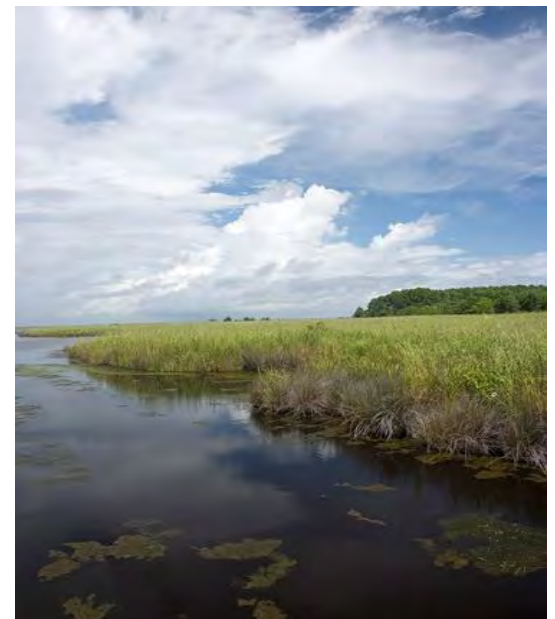


Comprehensive site maps, preliminary turbine layouts, visual impact studies, and a full project overview will be publicly available in the coming weeks and months in coordination with relevant stakeholders and rights holders during public open houses.

STUDIES AND ASSESSMENTS

Nova Scotia has thorough environmental compliance procedures, which culminate in the Environmental Assessment and approval process. To navigate the process and ensure that the project meets and exceeds local, provincial, and federal environmental standards, Wind Strength and EverWind are working with Strum Consulting, an experienced local environmental consultancy, to undertake detailed studies, including desktop and field studies focused on:

- ❖ Flora and fauna species and habitat
- ❖ Wetlands and watercourses
- ❖ Geotechnical
- ❖ Sound and shadow flicker
- ❖ Visual simulation / photomontages
- ❖ Cultural and heritage resources
- ❖ Socio-economic assessment



SUPPORTING YOUR COMMUNITY

Wind Strength, EverWind, RES, and Strum are active players in the communities where the project is located and can support various fundraising events and special initiatives that bring local benefit.

If you have any ideas on how we can take an active role in the community, please contact us to discuss community contributions or sponsorship opportunities.

LOCAL BENEFITS

The Kmtnuk Wind Project will bring substantial local economic and social benefits to the community. These include:

- Local tax revenues throughout the life of the project
- Project to provide employment through a committee
- First Nation Partners to maximize contracting and employment opportunities
- Contracting opportunities for First Nations & Community businesses
- Construction and operations jobs and support services during construction and throughout the life of the project
- Increased local spending on goods and services during the project's development, construction and operational phases

PUBLIC OPEN HOUSE



Wednesday August 23, 2023

From 5 pm to 8 pm

**Earltown Community Center
5527 NS-311, NS B0K 1P0**

To learn more about this project, please join us at our first public open house. The event will consist of an evening of discussion with the project team and industry specialists.

Refreshments and snacks will be served.

COMMUNITY ENGAGEMENT AND PUBLIC CONSULTATION

As the project proceeds through the development process, Wind Strength, EverWind, RES and Strum are committed to working with all landowners, stakeholders and rights holders to establish and maintain a strong relationship with the community. We strive to exceed the minimum requirements on all our projects, and we commit to responding and acting on all comments and concerns in a timely manner. We welcome the opportunity to meet with local experts and stakeholders and are actively working to maximize local contracting and employment during the construction and operational phases of the project.

Recognition of the Mi'kmaq & their Ancestral Territory

EverWind Fuels and RES acknowledge the ancestral and unceded territory of the Mi'kmaq people, and we acknowledge them as the past, present, and future caretakers of this land, Mi'kma'ki. Our work shares a core principle practiced by the Mi'kmaq: environmental stewardship. We are committed to working with Mi'kmaq through consultation, engagement and delivering a comprehensive partnership on all aspects of the project.

ABOUT



WJU'SNEWIKNAQ
WIND STRENGTH

Wind Strength, a Membertou company, is planning to jointly develop two wind farms, Bear Lake and Kmt nuk, with EverWind Fuels and RES. Wind Strength is a translation of the Mi'kmaq word "Wju'snewiknaq" (Wu-jew-sin-eh-wee-ginn-ah), which embodies the strength, resiliency, and environmental stewardship of the Mi'kmaq people through green energy leadership. For generations, Mi'kmaq were prevented from participating in and benefitting from the development of Canada's natural resources. Today, as the past, present, and future caretakers of this land, we are proud to be at the forefront of building a cleaner future for Nova Scotia and the world.

ABOUT



EverWind is North America's leading independent green hydrogen developer. EverWind received the first Environmental Approval in North America for a large-scale green hydrogen project, and is well progressed in design, engineering, and development for the first phase of both its green energy generation projects and the production facility which will convert this energy into green hydrogen. EverWind owns and operates the deepest ice-free berth on the East Coast of North America, with world class access to rail, roads, and pipelines. Our safety-first culture reflects a highly skilled and extensively certified workforce, with a stellar safety record. EverWind has three First Nations equity partners and is a champion for meaningful engagement with Rightsholders and the advancement of social and economic reconciliation. At a local level, the Company works closely with municipalities and stakeholder organizations. EverWind is led by Trent Vichie, a co-founder of Stonepeak Infrastructure Partners, and a former Blackstone Partner. EverWind's development team consists of over 20 members who have previously held senior positions at various infrastructure, private equity, renewable power, engineering, and utility companies. EverWind is also supported by a world-class advisory team including Black & Veatch, ILF, RES, Strum Environmental, McInnes Cooper, King & Spalding, McKinsey, Morgan Stanley, CIBC, and Citi.

ABOUT

RES, the largest independent renewable energy company in the World, is a family-owned business, owned by the McAlpine Family Trust, and has been in the renewable energy business since 1981. Through our corporate culture and values, we are dedicated to a zero-carbon future for all Canadians and our focus is solely on renewable energy projects (wind and solar) and supporting & enabling projects (energy storage and transmission). RES has been developing, constructing, owning, and/or operating renewable energy, transmission, and energy storage projects in Canada since 2003. To date, RES has developed and/or built 28 projects across Canada.

ABOUT



Strum Consulting is Atlantic Canada's leader in engineering, surveying, and environmental services. Our skilled team of 150 multidisciplinary professionals consists of certified site professionals, engineers, geologists and hydrogeologists, biologists, technologists, legal land surveyors, and masters-level environmental specialists. Strum recently completed the environmental work and the approved Environmental Assessment (EA) for EverWind Fuels' Green Hydrogen/Ammonia facility; the first of its kind in Atlantic Canada! We're thrilled to be continuing to support EverWind on the future phases of this exciting project in Nova Scotia and in Newfoundland and Labrador

CONTACT US

Kmt nuk Wind Power Project

2101-1969 Upper Water Street

Halifax, NS | B3J 3R7

Info@kmt nukwind.com



WELCOME



Welcome

Community Information Session



WJU'SNEWIKNAQ
WIND STRENGTH



LAND ACKNOWLEDGEMENT



Recognition of the Mi'kmaq and their Ancestral Territory

We acknowledge the ancestral and unceded territory of the Mi'kmaq people. We also acknowledge the Mi'kmaq as the past, present, and future caretakers of this land, Mi'kmaki.

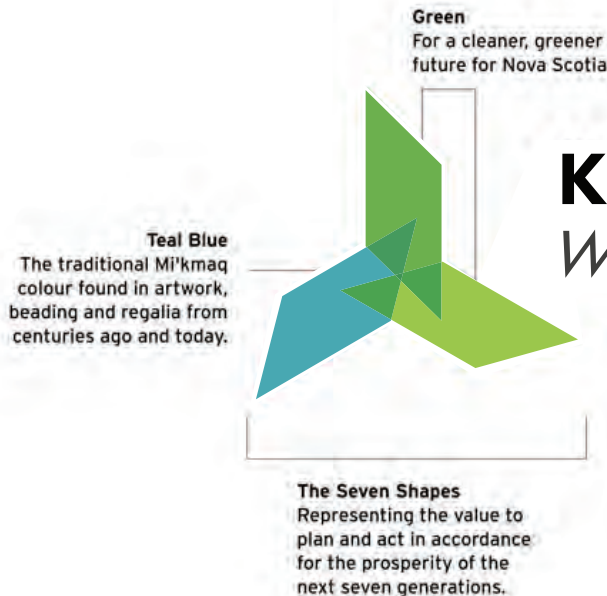
As a Membertou Company, Wind Strength is committed to meaningful engagement, collaboration, and accountability with all partners and Rightsholders in the advancement of social and economic reconciliation.



ABOUT WIND STRENGTH



Wind Strength, a Membertou company, is planning to jointly develop Kmt nuk (Gah-Mit-Nook) Wind Power Project with EverWind Fuels and RES. Wind Strength is a translation of the Mi'kmaq word "Wju'snewiknaq" (Wu-jew-sin-eh-wee-ginn-ah), which embodies the strength, resiliency, and environmental stewardship of the Mi'kmaq people through green energy leadership. For generations, Mi'kmaw were prevented from participating in and benefiting from the development of Canada's natural resources. Today, as the past, present, and future caretakers of this land, we are proud to be at the forefront of building a cleaner future for Nova Scotia and the world.



KMTNUK WIND *WHERE THE MOUNTAIN IS*



Membertou
WELCOMING THE WORLD!

MAJORITY OWNER



MINORITY OWNER



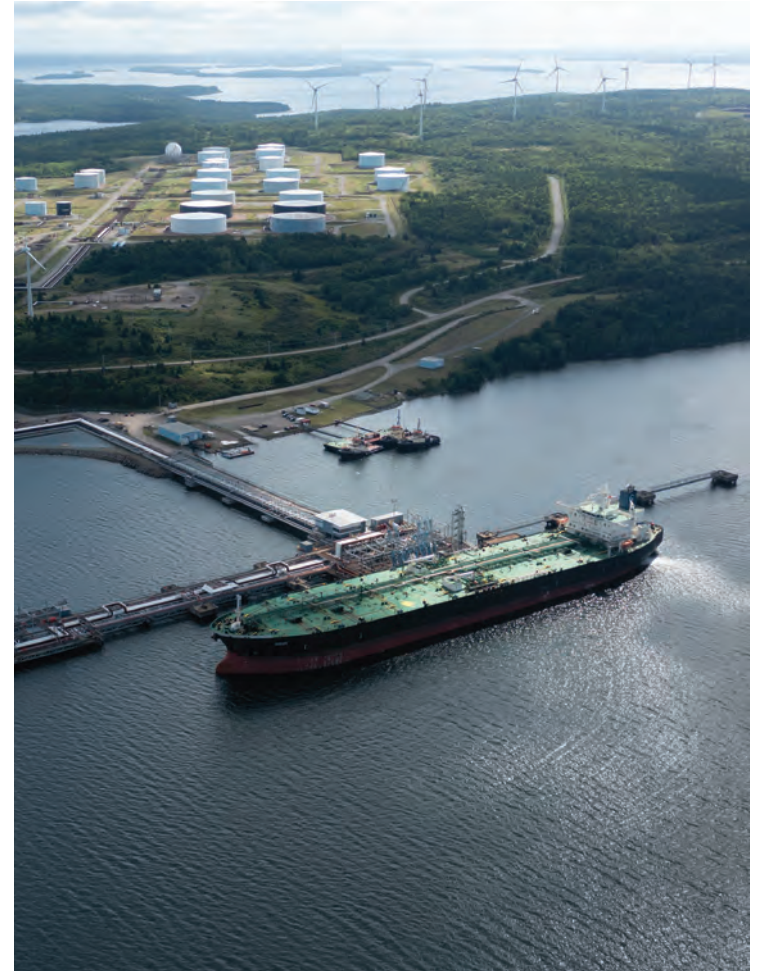


ABOUT EVERWIND



EverWind Fuels LLC is a developer of green hydrogen and ammonia production, storage facilities, and associated transportation assets. The EverWind Fuels team is comprised of over 100 employees, mostly from the local community, who are further supported by full time contractors and consultants.

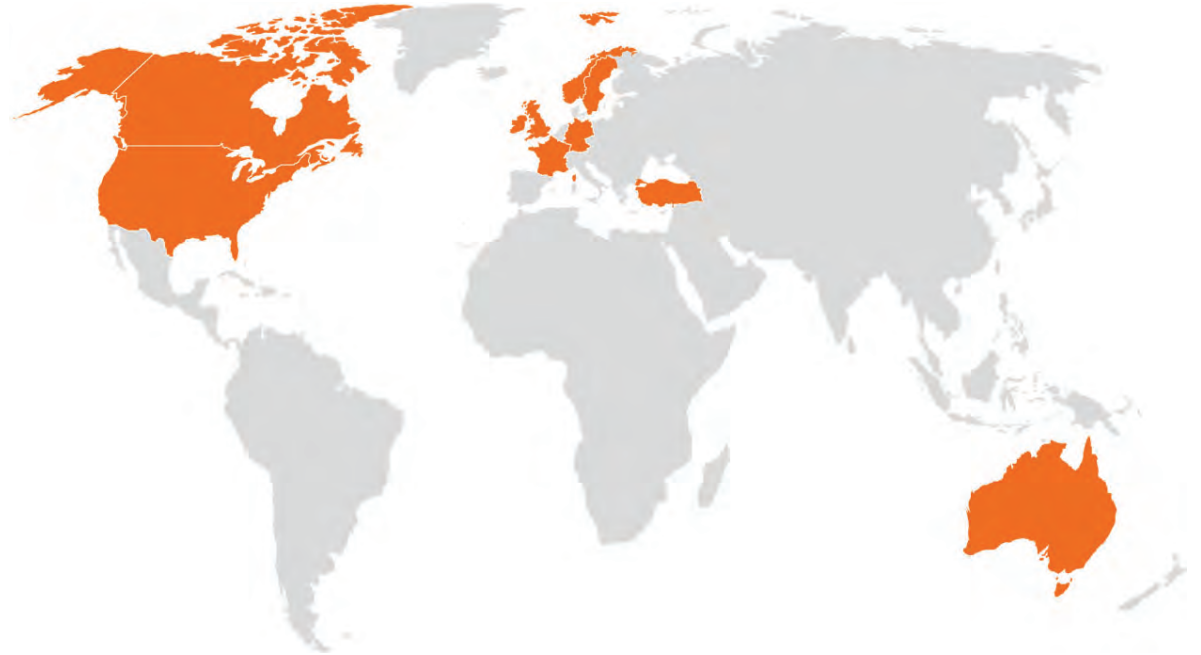
We are developers, owners, and managers with experience in almost every infrastructure sub-category in North America, and a track record of success and delivering socially and environmentally responsible developments for all of our stakeholders.





RES EXPERIENCE

RES is the world's largest independent renewable energy company. At the forefront of the industry for 40 years, RES has delivered more than 22GW of renewable energy projects across the globe and supports an operational asset portfolio exceeding 9GW worldwide for a large client base. RES employs more than 2,000 people and is active in 11 countries working across onshore and offshore wind, solar, energy storage and transmission and distribution.



23 GW PORTFOLIO

40 YEARS OF EXPERIENCE

12 GW ASSETS



WIND



SOLAR



STORAGE



T&D





ENVIRONMENTAL ASSESSMENT

The project is submitting to the province's rigorous **Environmental Assessment (EA) process**, which includes a comprehensive analysis of the potential environmental impacts of the project.

Strum Consulting is successfully guiding the process and conducting a series of detailed studies including:

- Watercourse and Wetland Surveys
- Vegetation and Habitat Surveys
- Bird and Bat Surveys
- Moose Surveys
- Sound and Visual Assessments
- Electromagnetic Assessments
- Archaeological Assessments
- Telecommunication Assessments

strum

CONSULTING





ENVIRONMENTAL MONITORING

As part of the survey process, specialized equipment is used to help ensure we have comprehensive environmental information.



Avian Radar

Radar systems are used to track biological targets (birds and bats) as they fly through the airspace. This data is used to help assess potential impacts on avifauna and to inform mitigation measures.

Meteorological (MET) Tower

- MET Towers are temporary structures designed to collect Weather related information, such as wind speed, wind direction, and temperature.
- MET Towers are unassuming in the landscape. Each MET Tower requires just a 100m buffer. Any impact on the surrounding area is minimal.
- MET Towers have a concrete base with guy-wires for support. The wires typically extend 60 metres in 3-4 directions from the tower.
- Each MET Tower has a permit application approved by the Government of Nova Scotia



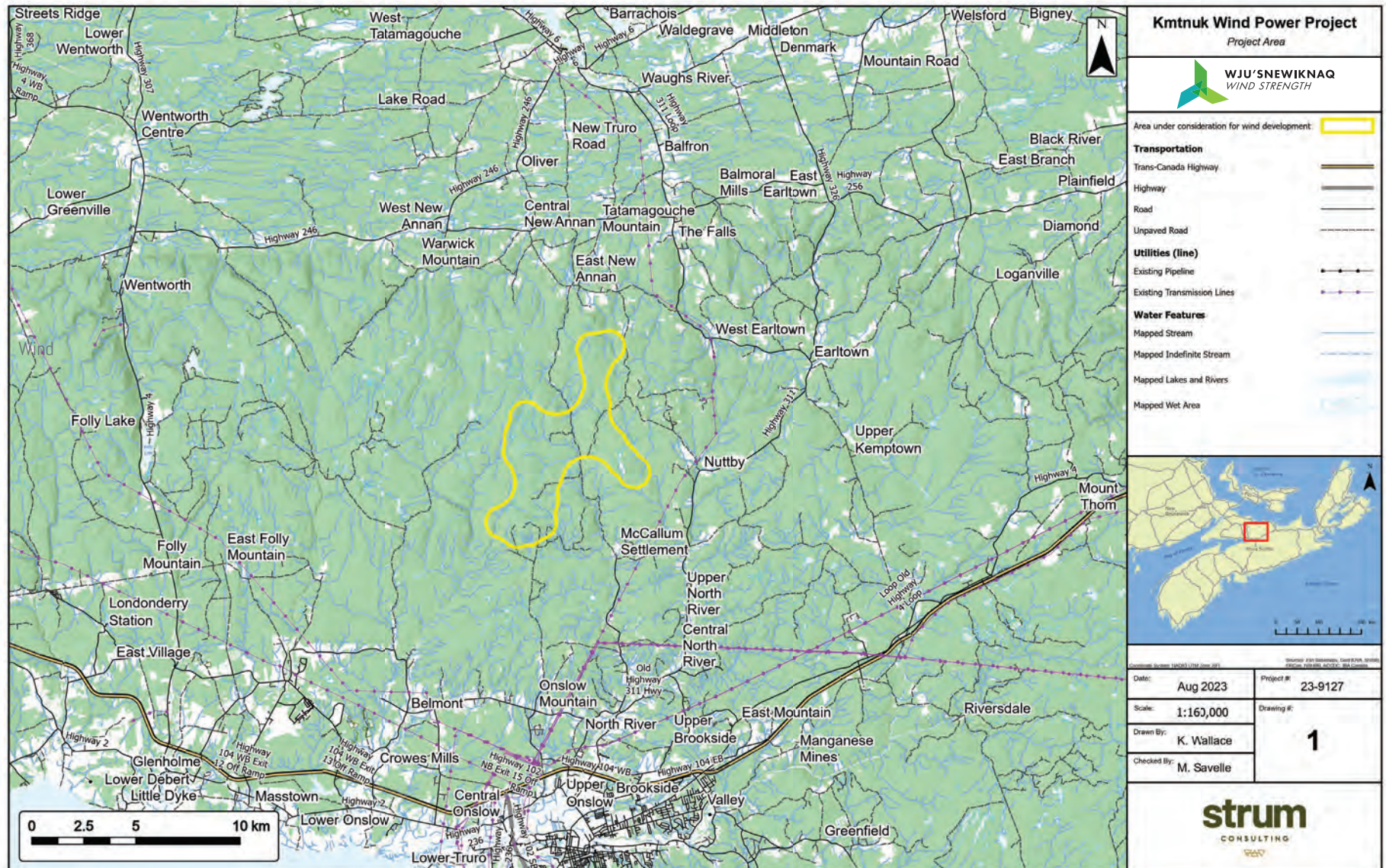
strum

CONSULTING



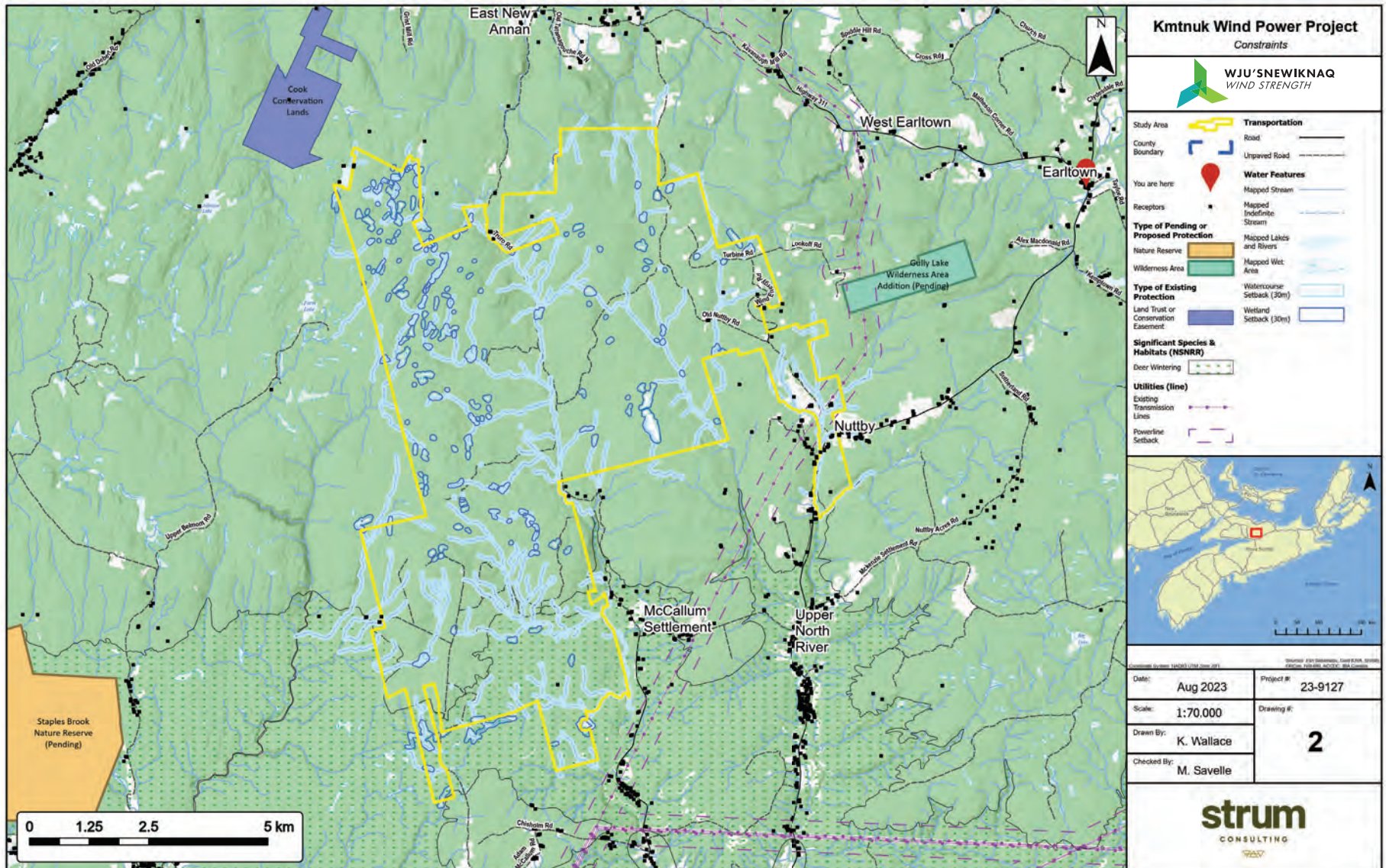


KMTNUK WIND POWER PROJECT AREA





KMTNUK WIND POWER PROJECT CONSTRAINTS



Kmt nuk Wind Power Project Constraints

WJU'SNEWIKNAQ WIND STRENGTH

Study Area		Transportation	
County Boundary		Road	
You are here		Unpaved Road	
Receptors		Water Features	
Type of Pending or Proposed Protection		Mapped Stream	
Nature Reserve		Mapped Indefinite Stream	
Wilderness Area		Mapped Lakes and Rivers	
Type of Existing Protection		Mapped Wet Area	
Land Trust or Conservation Easement		Watercourse Setback (30m)	
Significant Species & Habitats (MSNRR)		Wetland Setback (30m)	
Deer Wintering			
Utilities (line)			
Existing Transmission Lines			
Powerline Setback			

Map Information:

Date: Aug 2023 | Project #: 23-9127

Scale: 1:70,000 | Drawing #: 2

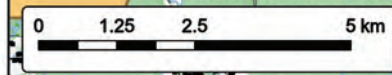
Drawn By: K. Wallace

Checked By: M. Savelle

strum CONSULTING



Date:	Aug 2023	Project #:	23-9127
Scale:	1:70,000	Drawing #:	2
Drawn By:	K. Wallace		
Checked By:	M. Savelle		



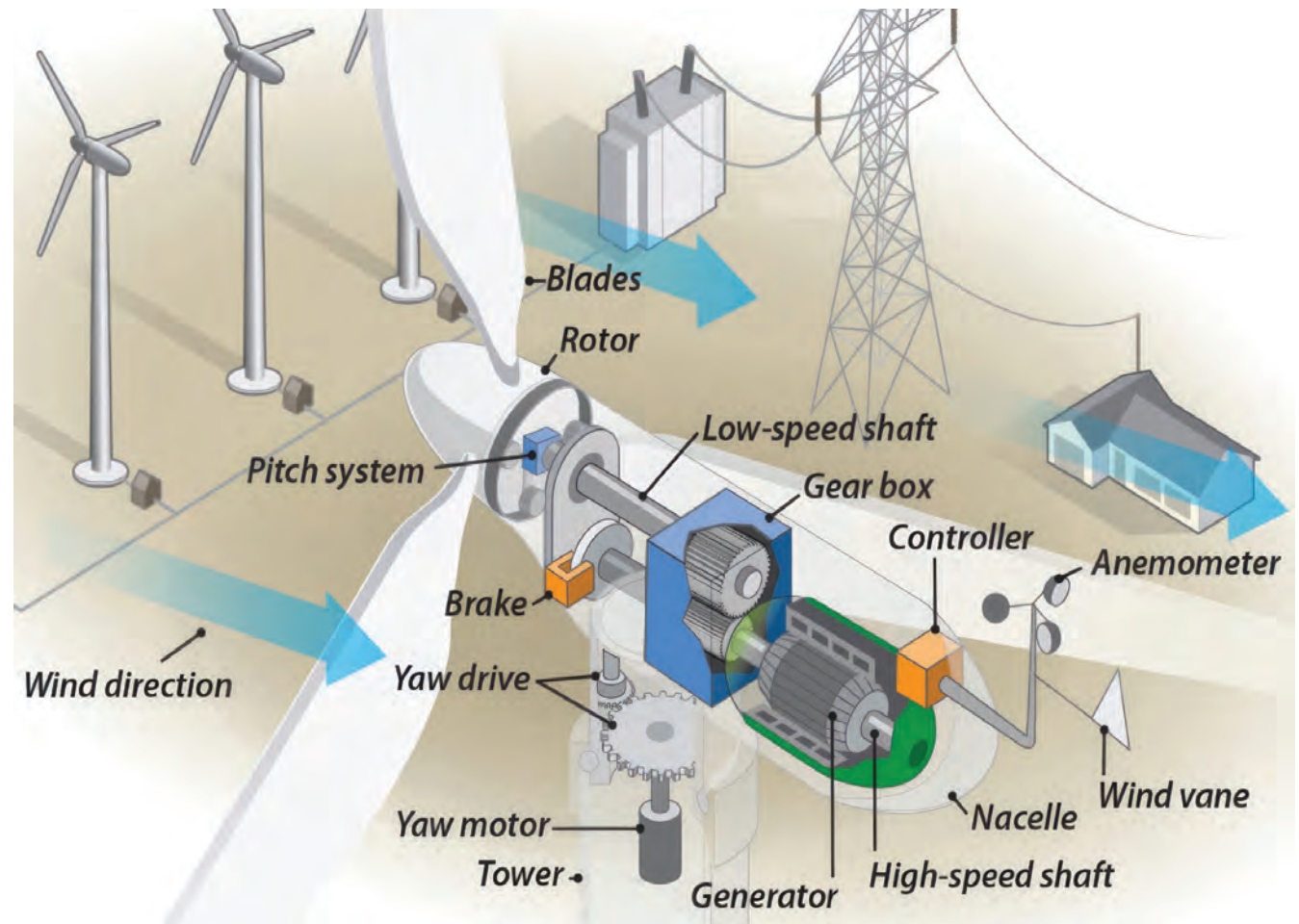


HOW WIND POWER WORKS

Modern turbines have three main components: the tower, the nacelle (or generator) and the blades.

The blades rotate when the wind blows and are attached to a gearbox in the nacelle, which turns the generator and produces electricity.

Electricity is then converted to a medium voltage AC current, transmitted via cables and is collected at a substation before being transmitted by overhead lines to the main electrical grid.





COMMUNITY BENEFITS



We believe our projects are net positives for the local communities in which we work.

Benefits Include:

- ✓ Local tax revenues throughout the life of the project
- ✓ Project to provide employment through a committee
- ✓ First Nation Partners to maximize contracting and employment opportunities
- ✓ Contracting opportunities for First Nations & community businesses
- ✓ Construction and operations jobs and support services during construction and throughout the life of the project
- ✓ Increased local spending on goods and services during the project's development, construction and operational phases
- ✓ Electricity subsidy fund – **Homeowners** within proximity of the project will be eligible to receive a yearly subsidy.
- ✓ Community vibrancy fund – Will support **community** organizations near projects.
- ✓ Bursary fund – Will support **local** community members to train in the renewable energy industry.



PROJECT DETAILS



Kmt nuk Wind Power Project Details

- Total installed capacity of up to 98 MW
- Comprises no more than 20 turbine locations
- Turbines with a generation capacity of around 5.2 to 6.6 MW each
- Will include a substation, operations and maintenance building and a temporary laydown yard
- Will include temporary wind measurement tower, and likely one long-term wind measurement tower to assess and monitor wind resource plus additional mid-term wind measurement devices.

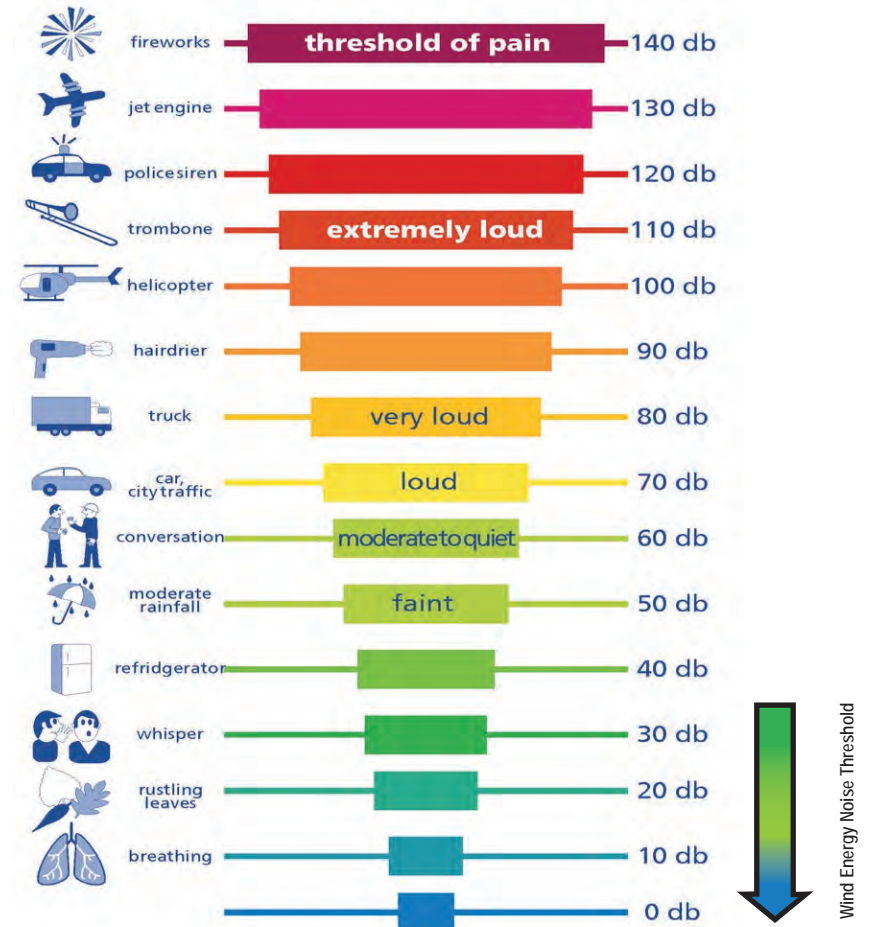
*Although Turbine selection has not yet been made, turbine hub height is typically between 95 m to 120 m and blades can measure up to 85 m long



NOISE CONTROL

KMTNUK NOISE IMPACT ASSESSMENT

- Nova Scotia's EA Guidelines for wind power projects regulates that wind farm design and turbine siting must not cause sound levels to exceed **40 dBA** at the exterior of receptors (dwellings).
- The Municipality of the County of Colchester municipal bylaw regulates that turbines are not to exceed **36 dBA** at receptors (dwellings).
- A noise assessment will be completed by Strum Consulting. Noise modeling will consider other operational projects and noise sources in the area.





CONSTRUCTION



Roads

We will use existing roads to minimize impact to land.

Electrical

Collector lines will be over head and transmission lines will follow project roads.

Turbine Footprint

Excavation of roughly half an acre is needed per turbine, reduced to less than a quarter acre after construction.



NOVA SCOTIA'S CURRENT ENERGY MIX



Did you know?

Wind farms are designed to last at least 25 years, but they are likely to last longer and modern turbines require very little maintenance.

Various factors are considered during project development including:

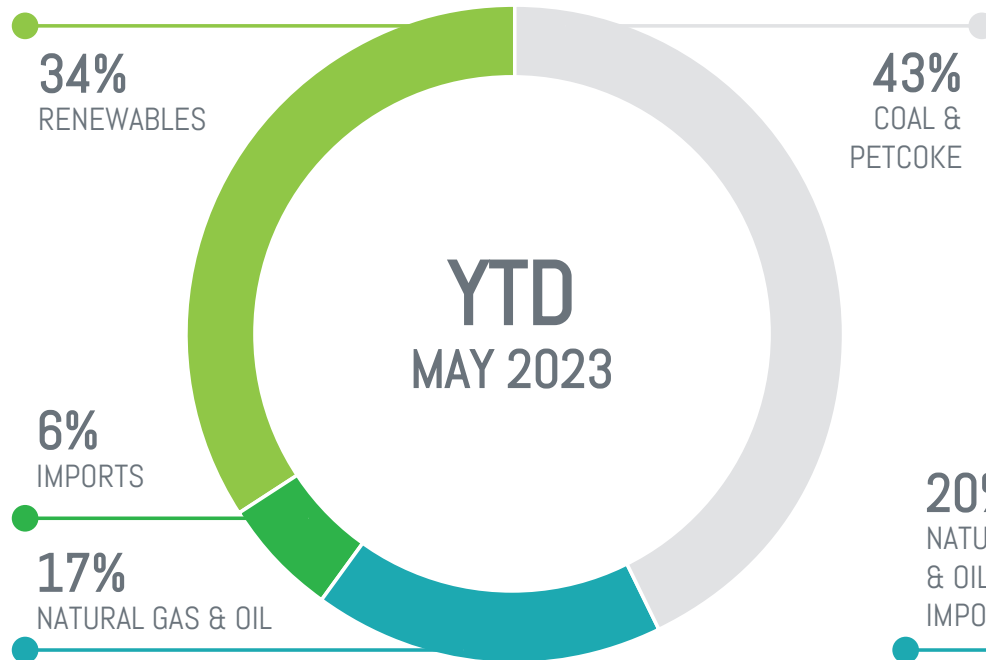
- Wind resource
- Electrical infrastructure - transmission and distribution lines
- Environmental constraints – wetlands and water courses, wildlife
- Noise considerations and shadow flicker
- Archaeological and cultural features
- Mi'kmaq environmental knowledge study (MEKS)
- Municipal Bylaws, land use order guidelines and setbacks
- Community input and other interested stakeholders and agencies
- Transportation infrastructure - highways, roads, railways



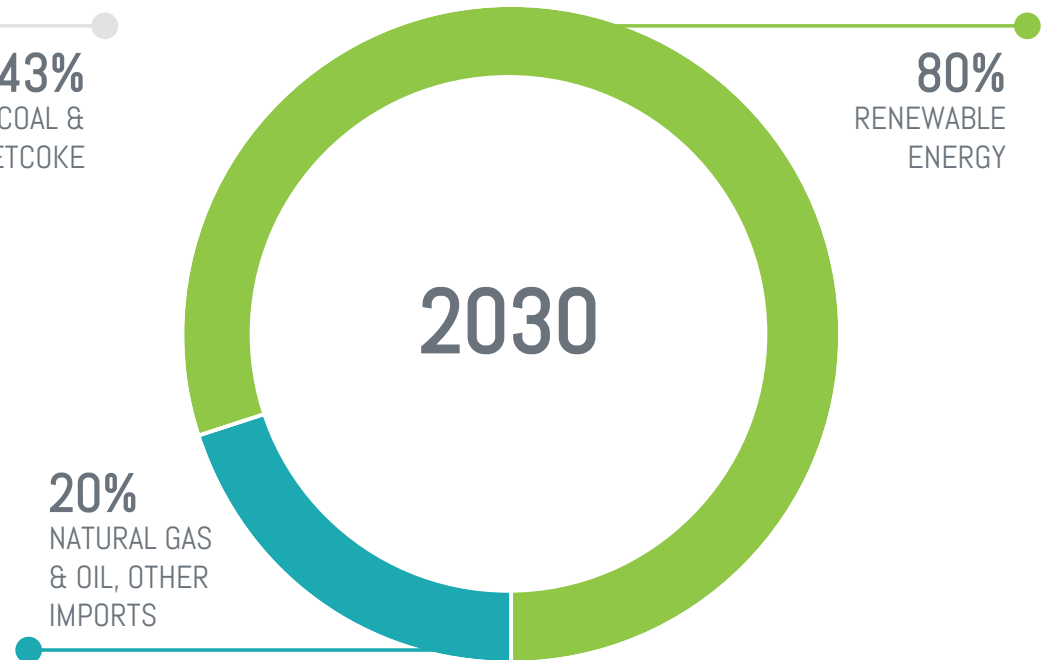
NOVA SCOTIA'S CURRENT ENERGY MIX



WHERE YOUR ENERGY COMES FROM NOW



WHERE WE'RE HEADED





COMMUNITY CONTRIBUTIONS

Wind Strength, EverWind and RES seek to be a good corporate citizens in the community and typically supports various fundraising events and special initiatives that benefit the local community

Examples of activities or organizations we have supported:

- Economic development
- Local charities
- Local sports teams
- Museums and libraries
- Agricultural associations
- ...and many more!

Do you have an idea of ways we can support your community?
Let us know!





CONCLUSION



Thank you.

We appreciate you taking the time to join us. We would be happy to follow-up with you if you have any other questions about the Project. Please fill out a feedback form.



Open House Kmt nuk - August 23, 2023 Surveys

Name: [REDACTED]
1. Did you find this event useful? Yes, very
2. Were all your questions about our project answered? Yes, fully
3. Please share any comments, questions, or feedback you may have with the project No comments provided
4. Do you have any ideas on how we can support the community? No comments provided

Name: [REDACTED]
1. Did you find this event useful? Yes, somewhat. No presentation by stakeholders except PP no chance to hear collective community.
2. Were all your questions about our project answered? Somewhat
3. Please share any comments, questions, or feedback you may have with the project Big dreams, lots of complex??? About Canso end of project.
4. Do you have any ideas on how we can support the community? Plan to produce enough energy like say 50% more than Canso needs so you are really post of 34-80 23-30 plans

Name: [REDACTED]
1. Did you find this event useful? Yes, very
2. Were all your questions about our project answered? Somewhat
3. Please share any comments, questions, or feedback you may have with the project No comments provided
4. Do you have any ideas on how we can support the community? No comments provided

Name: [REDACTED]
1. Did you find this event useful? Yes, very
2. Were all your questions about our project answered? Yes, fully
3. Please share any comments, questions, or feedback you may have with the project This project is connected to the creation of ammonia for shipment to Germany. In all respects, it is going to be successful with a huge amount of xxx from outside NS, together with a portion of funding approachable \$1B. We need to learn to graciously welcome new funding and leadership from the xxx owners. Now having been active with a CEDIF (with comfit notes) for wind energy, we want to be part of the developing "Big Wind" in our province. We have a deep respect for First Nations and their care of Mother Earth. These are trouble sometimes, but we have to keep moving ahead. The project is important.
4. Do you have any ideas on how we can support the community? Encourage local investment (even if a small portion) so there is a feeling of being part of the future.

Name: [REDACTED]
1. Did you find this event useful? Yes, very. It is important to have the information that has been collected- shared as it was here tonight, Thank you.
2. Were all your questions about our project answered? Yes, fully
3. Please share any comments, questions, or feedback you may have with the project I would like to have some time to research the information I was provided by the consultants and the project associates today. If I would reach out in a day or so with follow up questions that would be greatly appreciated. Our community is very important to us on Maggie's farm.
4. Do you have any ideas on how we can support the community? No comments provided

Name: [REDACTED]
1. Did you find this event useful? Yes, somewhat. I already read most of it in the Halifax examiner online newspaper and elsewhere.
2. Were all your questions about our project answered? Somewhat. It was to noisy in the room.
3. Please share any comments, questions, or feedback you may have with the project

Nova Scotia needs to green its own electric grid first as well as access land base to assign for the 20% protection plan by 2030.

Then Nova Scotia can give out land leases for additional wind power projects for private firms and further industrial use.

The revenue/dividends from Everwind gain will leave the province to go Everwind's shareholders in the USA. The direct use of green electricity is more simple more economic and also more sustainable.

Is Nova Scotia giving away prime wind harvesting locations to foreign investors? I have plenty concerns.

4. Do you have any ideas on how we can support the community?

No comments provided

Name: [REDACTED]

1. Did you find this event useful?

Yes, very

2. Were all your questions about our project answered?

Yes, fully

3. Please share any comments, questions, or feedback you may have with the project

Interesting project, we need more wind power.

4. Do you have any ideas on how we can support the community?

Community funds, partnerships with local wind (Tatamagouche wind field, etc.)

Name: [REDACTED]

1. Did you find this event useful?

Yes, very

2. Were all your questions about our project answered?

Somewhat, mostly some not until next meeting

3. Please share any comments, questions, or feedback you may have with the project

No comments provided

4. Do you have any ideas on how we can support the community?

Jobs, electricity subsidy.

Name: [REDACTED]

1. Did you find this event useful?

No, not at all

Where are the Everwind people? Wanted to ask them questions. We need to use the windfarms to produce electricity for NS + NS Power, not for a company to create ammonia hydrogen for xxxx.

2. Were all your questions about our project answered?

No, not at all

NS has to have green electricity before using it for other companies. Need to use NS land for NS wind farms for us, not foreign companies. We need NS to meet 2030 goals – 80% renewable energy

3. Please share any comments, questions, or feedback you may have with the project

Nice PR posters but does not address the major issues. We will not get to 80% renewable energy with your plan.

4. Do you have any ideas on how we can support the community?

Jobs, electricity subsidy.

Name: [REDACTED]

1. Did you find this event useful?

Yes, very

2. Were all your questions about our project answered?

Yes, fully

3. Please share any comments, questions, or feedback you may have with the project

Electricity subsidy fund is an excellent idea/action. Great answer to common question “How do I benefit as a resident close to windfarm but not a landowner?”

Nice to see environmental consultants present to answer questions, knowledgeable on items outside of expertise.

4. Do you have any ideas on how we can support the community?

Continue to work with local stakeholders, including atvans and snowmobile groups.

Name: [REDACTED]

1. Did you find this event useful?

No, not at all

Would have been good to have it as a meeting open consultation after to be able to ask Q/A.

2. Were all your questions about our project answered?

No, not at all

What are the drawbacks of these huge windmills twice the size of the xxxx. Why is the electricity not being used for NS Power. Not for Germany

3. Please share any comments, questions, or feedback you may have with the project

No comments provided

4. Do you have any ideas on how we can support the community?
No comments provided

Name: [REDACTED]

1. Did you find this event useful?
No, not at all
Present your ideas please in a format wherein I could hear your pitch and plan and ask questions accordingly.

2. Were all your questions about our project answered?
No, not at all
What kind of investments do you plan for community development? How will this actually benefit a sustainable community?

3. Please share any comments, questions, or feedback you may have with the project
No comments provided

4. Do you have any ideas on how we can support the community?
We are in a housing crisis, and food costs now seem so high, you could consider investing in programs that involved provide quality living expenses.

Name: [REDACTED]

1. Did you find this event useful?
Yes, somewhat
Would like to see one question: answer session where everyone gets the same answers

2. Were all your questions about our project answered?
Somewhat
Need CDI's on map. Protect trails ATV and hikings.

3. Please share any comments, questions, or feedback you may have with the project
No comments provided

4. Do you have any ideas on how we can support the community?
Wilderness area protection

Name: [REDACTED]

1. Did you find this event useful?
Yes, fully

2. Were all your questions about our project answered?
Yes, fully

3. Please share any comments, questions, or feedback you may have with the project
Looks like a very good project

4. Do you have any ideas on how we can support the community?
Take care that you don't effect our wilderness, ATV and snowmobile trails. Employ Nova Scotice trades persons.



Please join us at our Open House on September 21, 2023, from 2 – 7 pm at the Earltown Community Centre, 5527, Highway 311, NS.

Winds of Change

The Kmt nuk Wind Power Project. Wind Strength, a Membertou company, and EverWind Fuels are jointly developing the Kmt nuk Wind Project, a new 98 MW wind project to be located in the Municipality of the County of Colchester



What Benefits Does the Project Bring to the Local Community?



Supports Economic Reconciliation

51% owned by



Membertou
WELCOMING THE WORLD



Generates Clean, Green Energy

98 MW with operations in 2025



Creates Local Jobs

5+ Permanent 125 - 150 Construction



Generates Tax Revenue

- ✓ Municipal tax revenue
- ✓ Private & Crown land leases
- ✓ Corporate tax



Community Benefits Programs

- ✓ Electricity subsidy for eligible homeowners
- ✓ Community vibrancy fund
- ✓ Bursary fund for training in renewables

Learn more at www.kmt nukwind.com

Contact at info@kmt nukwind.com



Membertou
WELCOMING THE WORLD





WELCOME



Welcome

Community Information Session



WJU'SNEWIKNAQ
WIND STRENGTH



LAND ACKNOWLEDGEMENT



Recognition of the Mi'kmaq and their Ancestral Territory

We acknowledge the ancestral and unceded territory of the Mi'kmaq people. We also acknowledge the Mi'kmaq as the past, present, and future caretakers of this land, Mi'kmaki.

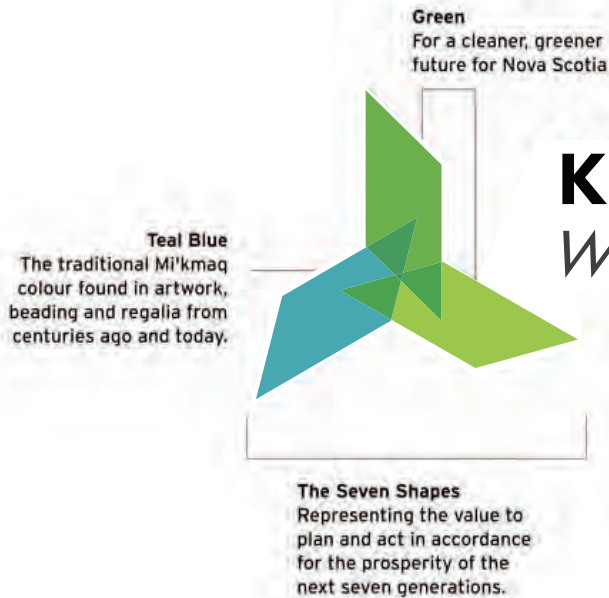
As a Membertou Company, Wind Strength is committed to meaningful engagement, collaboration, and accountability with all partners and Rightsholders in the advancement of social and economic reconciliation.



ABOUT WIND STRENGTH



Wind Strength, a Membertou company, is planning to jointly develop Kmt nuk (Gah-Mit-Nook) Wind Power Project with EverWind Fuels and RES. Wind Strength is a translation of the Mi'kmaq word "Wju'snewiknaq" (Wu-jew-sin-eh-wee-ginn-ah), which embodies the strength, resiliency, and environmental stewardship of the Mi'kmaq people through green energy leadership. For generations, Mi'kmaw were prevented from participating in and benefiting from the development of Canada's natural resources. Today, as the past, present, and future caretakers of this land, we are proud to be at the forefront of building a cleaner future for Nova Scotia and the world.



KMTNUK WIND *WHERE THE MOUNTAIN IS*



Membertou
WELCOMING THE WORLD!

MAJORITY OWNER



EVERWIND
FUELS

MINORITY OWNER





ABOUT EVERWIND



Headquartered in Halifax, EverWind Fuels LLC is a developer of green hydrogen and ammonia production, storage facilities, and associated transportation assets. The EverWind Fuels team is comprised of over 100 employees, mostly from the local community, who are further supported by full time contractors and consultants.

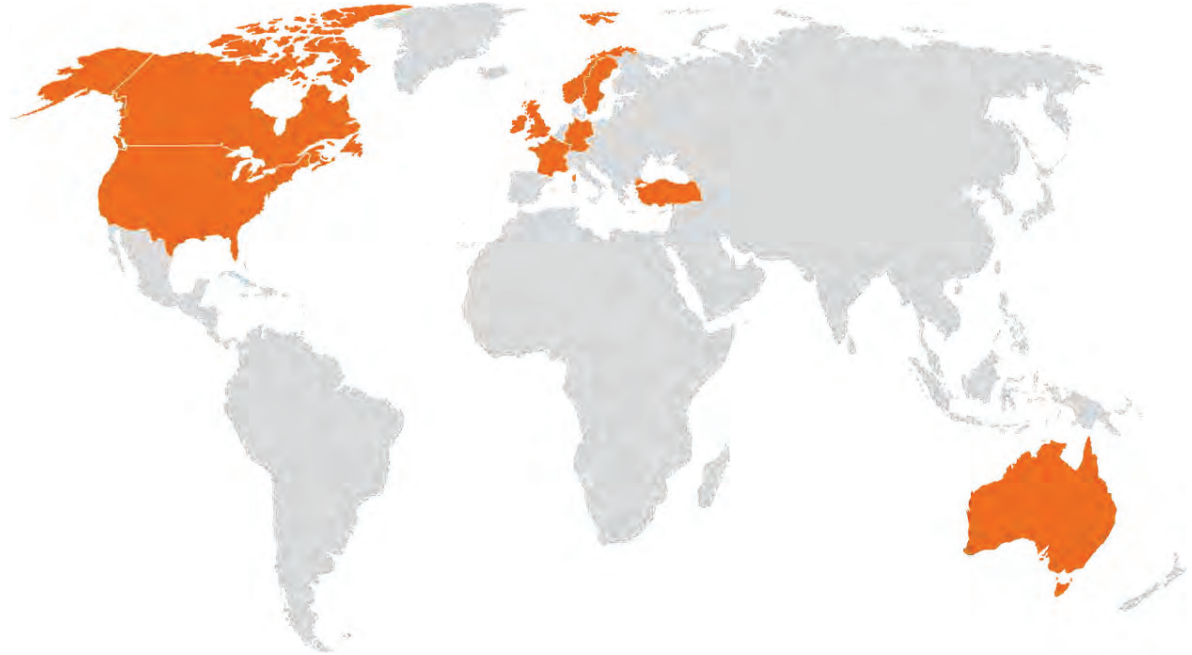
We are developers, owners, and managers with experience in almost every infrastructure sub-category in North America, and a track record of success and delivering socially and environmentally responsible developments for all of our stakeholders. The wind investments will benefit locals, rate payers, and support the development of cheap clean fuels in Nova Scotia.





RES EXPERIENCE

RES is the world's largest independent renewable energy company. At the forefront of the industry for 40 years, RES has delivered more than 23 GW of renewable energy projects across the globe and supports an operational asset portfolio exceeding 12 GW worldwide for a large client base. RES employs more than 2,000 people and is active in 11 countries working across onshore and offshore wind, solar, energy storage and transmission and distribution.



23 GW PORTFOLIO

40 YEARS OF EXPERIENCE

12 GW ASSETS



WIND



SOLAR



STORAGE



T&D

res[®]
power for good[®]



ENVIRONMENTAL ASSESSMENT

The project is submitting to the province's rigorous **Environmental Assessment (EA) process**, which includes a comprehensive analysis of the potential environmental impacts of the project.

Strum Consulting is successfully guiding the process and conducting a series of detailed studies including:

- Watercourse and Wetland Surveys
- Vegetation and Habitat Surveys
- Bird and Bat Surveys
- Moose Surveys
- Sound and Visual Assessments
- Electromagnetic Assessments
- Archaeological Assessments
- Telecommunication Assessments

strum

CONSULTING





ENVIRONMENTAL MONITORING

As part of the survey process, specialized equipment is used to help ensure we have comprehensive environmental information.



Avian Radar

Radar systems are used to track biological targets (birds and bats) as they fly through the airspace. This data is used to help assess potential impacts on avifauna and to inform mitigation measures.

Meteorological (MET) Tower

- MET Towers are temporary structures designed to collect Weather related information, such as wind speed, wind direction, and temperature.
- MET Towers are unassuming in the landscape. Each MET Tower requires just a 100m buffer. Any impact on the surrounding area is minimal.
- MET Towers have a concrete base with guy-wires for support. The wires typically extend 60 metres in 3-4 directions from the tower.
- Each MET Tower has a permit application approved by the Government of Nova Scotia



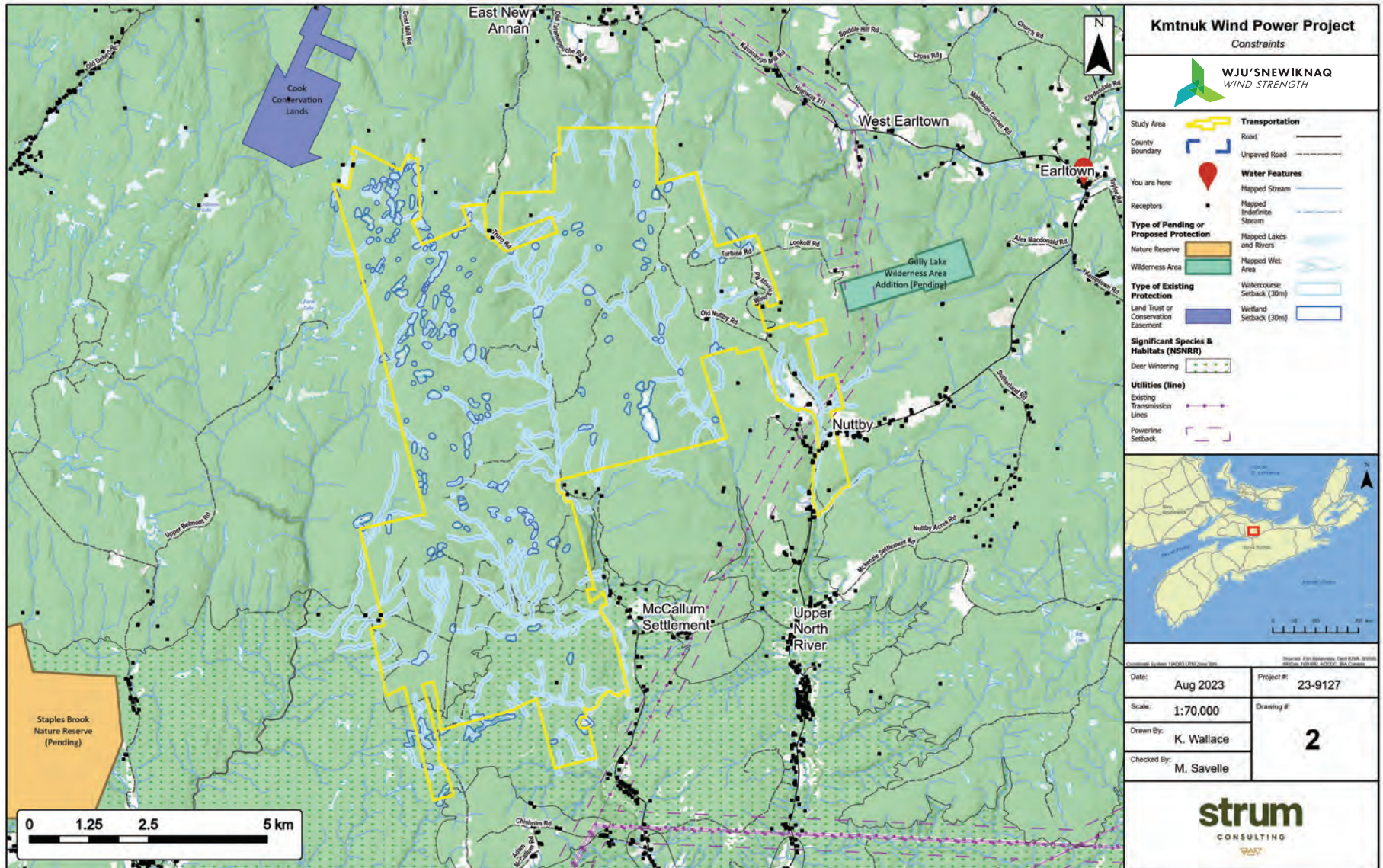
strum

CONSULTING



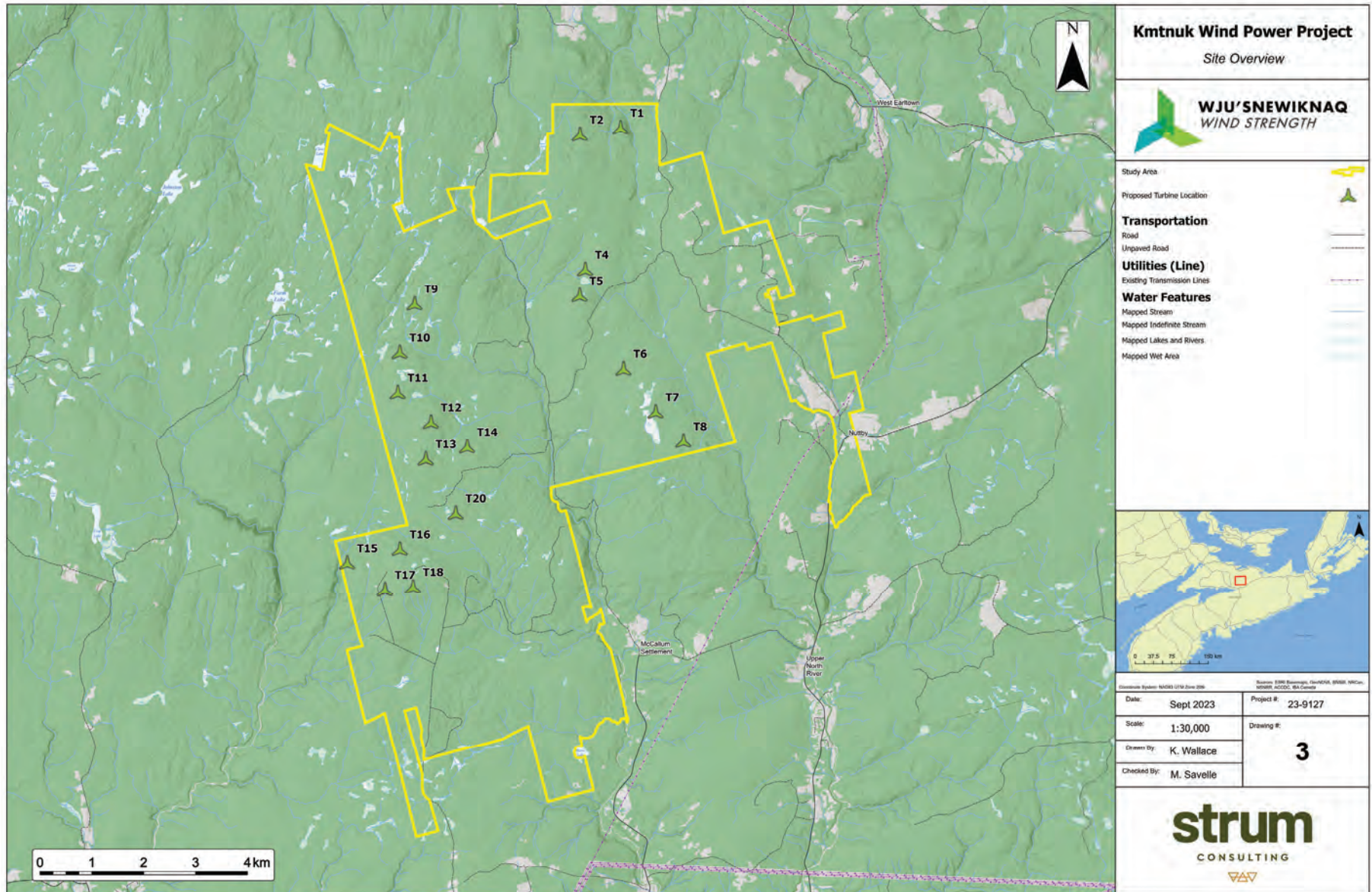


KMTNUK WIND POWER PROJECT CONSTRAINTS



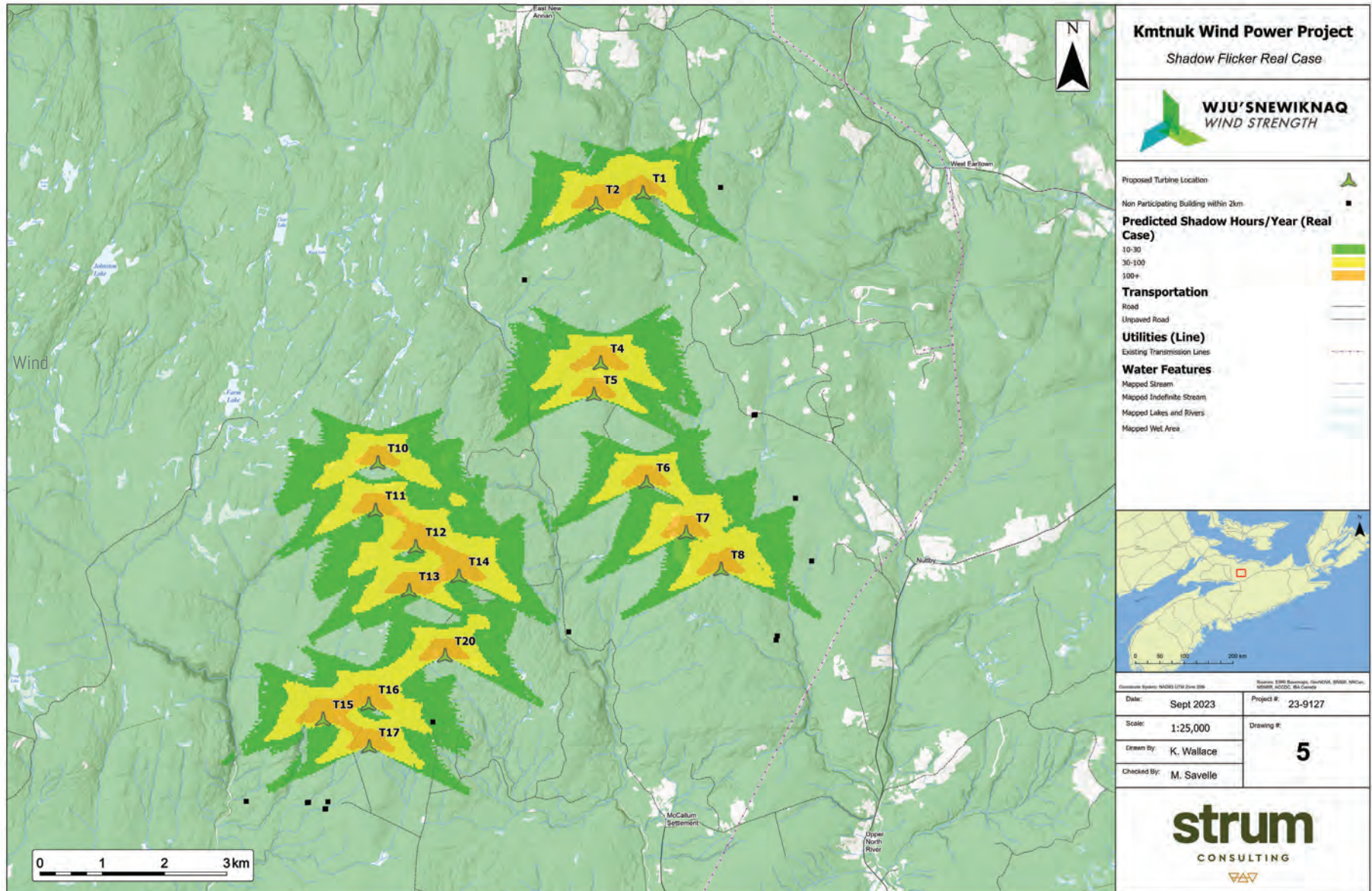


KMTNUK SITE OVERVIEW



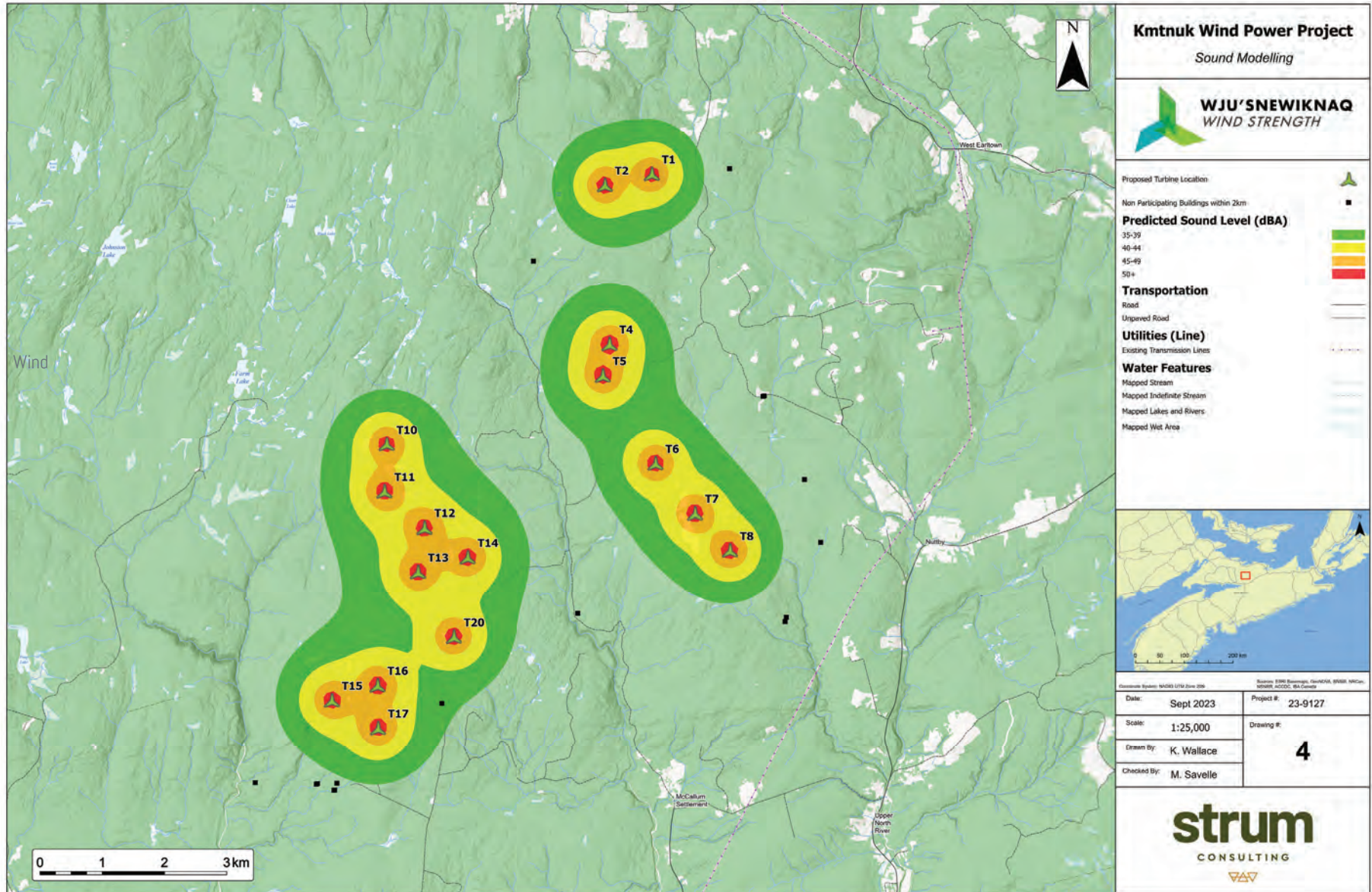


KMTNUK SHADOW FLICKER





KMTNUK SOUND MODELLING



<small>Client/Owner: Kmtnuuk Wind Power Project</small>		<small>Source: ESRI, Esri/Mapbox, OpenStreetMap, Esri, DeLorme, NAVTEQ, Swisstopo, USGS, AeroGRID, IGN, Esri, Mapbox, Swisstopo, USGS, AeroGRID, IGN, Esri, Mapbox</small>	
Date:	Sept 2023	Project #:	23-9127
Scale:	1:25,000	Drawing #:	4
Drawn By:	K. Wallace		
Checked By:	M. Savelle		



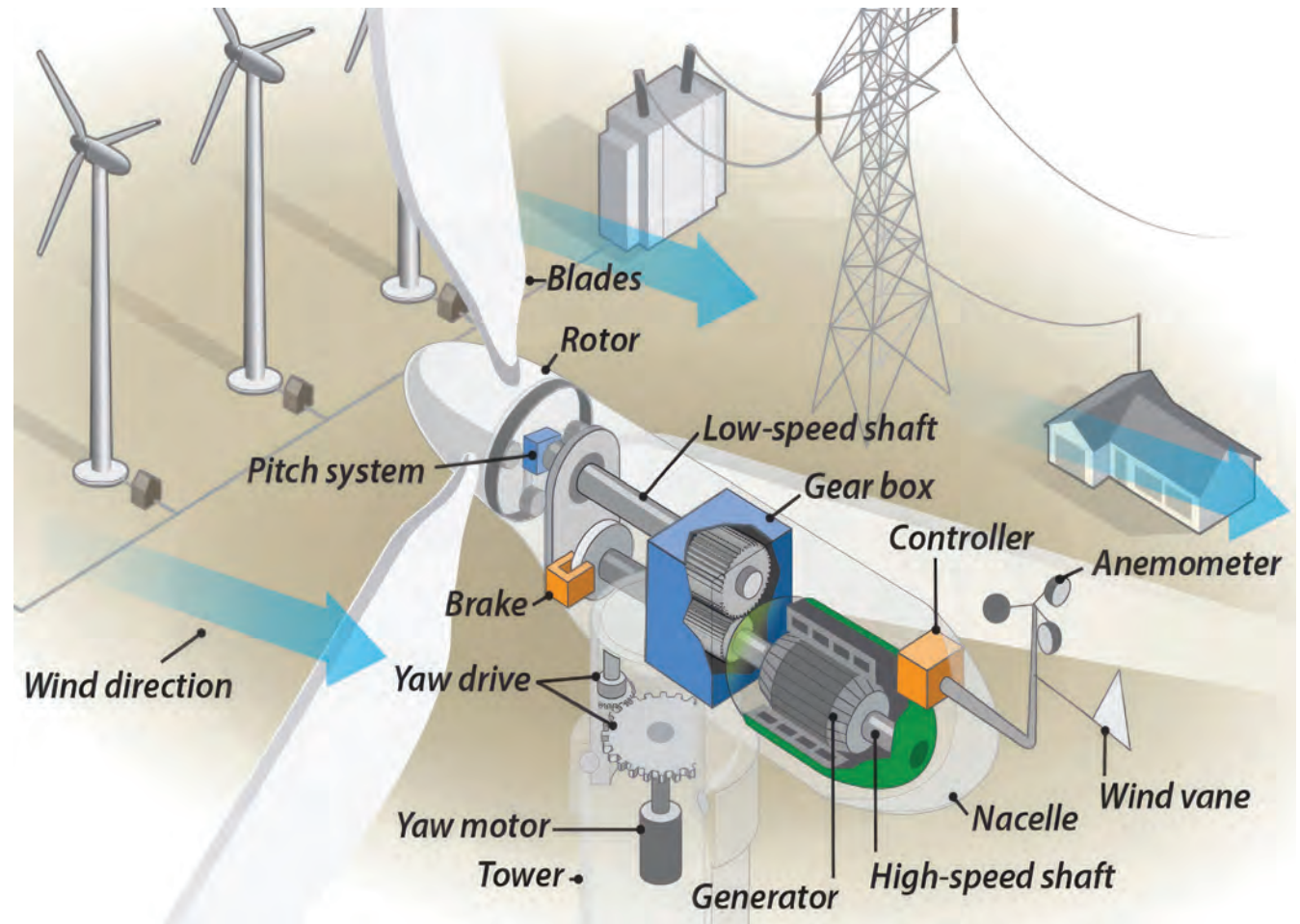


HOW WIND POWER WORKS

Modern turbines have three main components: the tower, the nacelle (or generator) and the blades.

The blades rotate when the wind blows and are attached to a gearbox in the nacelle, which turns the generator and produces electricity.

Electricity is then converted to a medium voltage AC current, transmitted via cables and is collected at a substation before being transmitted by overhead lines to the main electrical grid.





PROJECT DETAILS



Kmt nuk Wind Power Project Details

- Total installed capacity of up to 98 MW
- Comprises no more than 20 turbine locations
- Turbines with a generation capacity of around 5.2 to 6.6 MW each
- Will include a substation, operations and maintenance building and a temporary laydown yard
- Will include temporary wind measurement tower, and likely one long-term wind measurement tower to assess and monitor wind resource plus additional mid-term wind measurement devices.

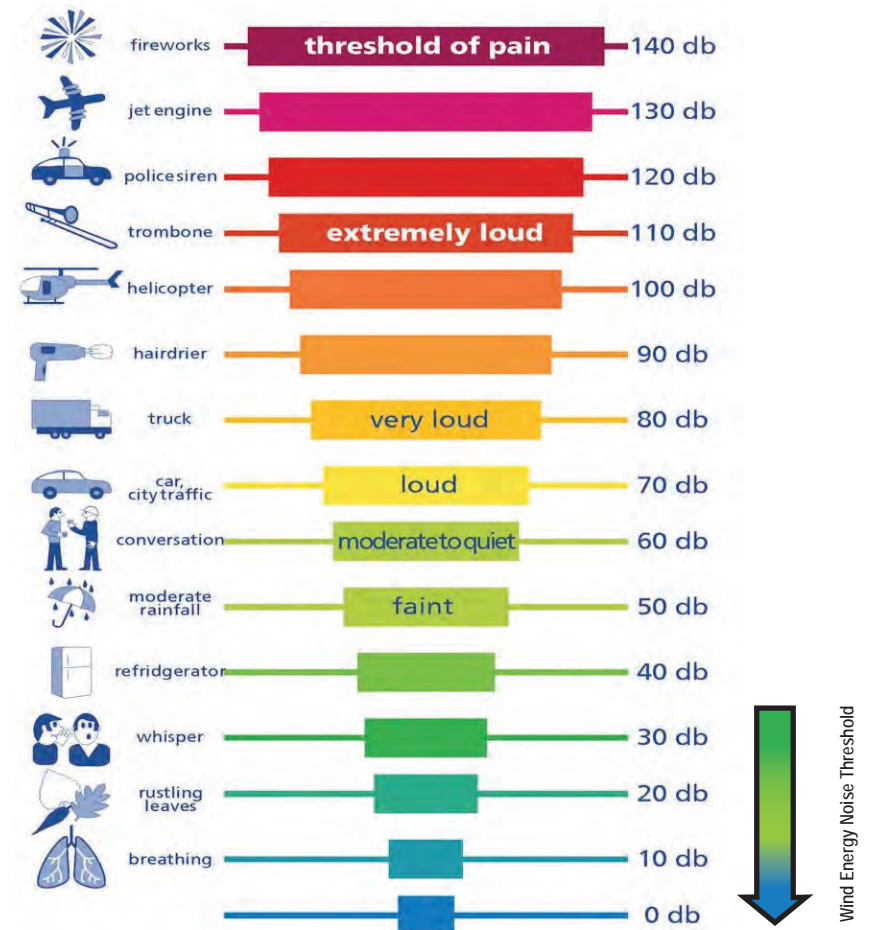
*Although Turbine selection has not yet been made, turbine hub height is typically between 95 m to 120 m and blades can measure up to 85 m long



NOISE CONTROL

KMTNUK NOISE IMPACT ASSESSMENT

- Nova Scotia's EA Guidelines for wind power projects regulates that wind farm design and turbine siting must not cause sound levels to exceed **40 dBA** at the exterior of receptors (dwellings).
- The Municipality of the County of Colchester municipal bylaw regulates that turbines are not to exceed **36 dBA** at receptors (dwellings).
- A noise assessment will be completed by Strum Consulting. Noise modeling will consider other operational projects and noise sources in the area.





CONSTRUCTION



Roads

We will use existing roads to minimize impact to land.

Electrical

Collector lines will be over head and transmission lines will follow project roads.

Turbine Footprint

Excavation of roughly half an acre is needed per turbine, reduced to less than a quarter acre after construction.



SITE CONSIDERATIONS

Did you know?

Wind farms are designed to last at least 25 years, but they are likely to last longer and modern turbines require very little maintenance.

Various factors are considered during project development including:

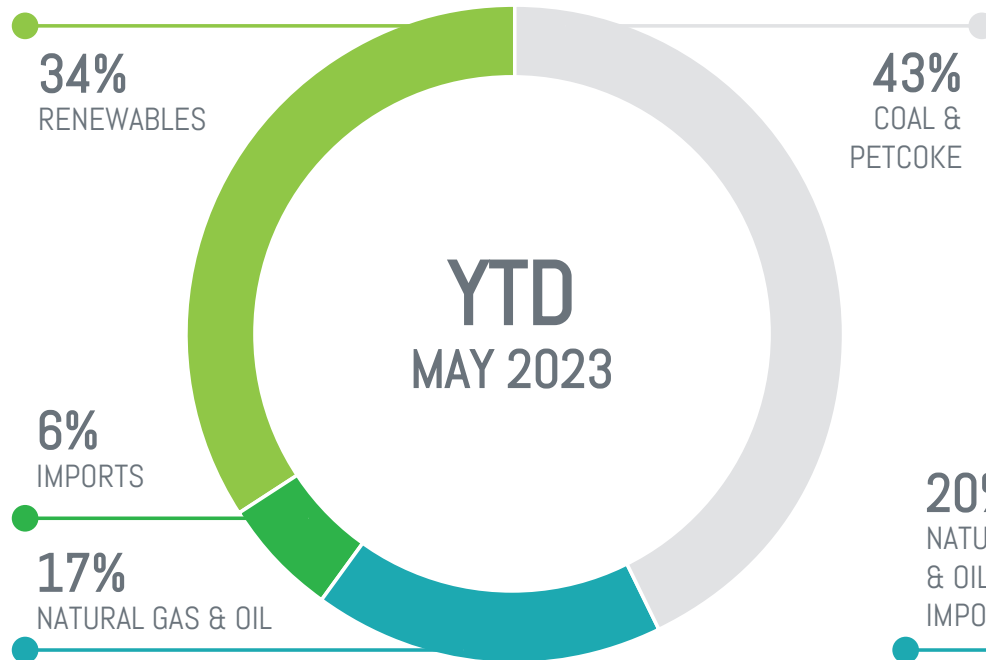
- Wind resource
- Electrical infrastructure - transmission and distribution lines
- Environmental constraints – wetlands and water courses, wildlife
- Noise considerations and shadow flicker
- Archaeological and cultural features
- Mi'kmaq environmental knowledge study (MEKS)
- Municipal Bylaws, land use order guidelines and setbacks
- Community input and other interested stakeholders and agencies
- Transportation infrastructure - highways, roads, railways



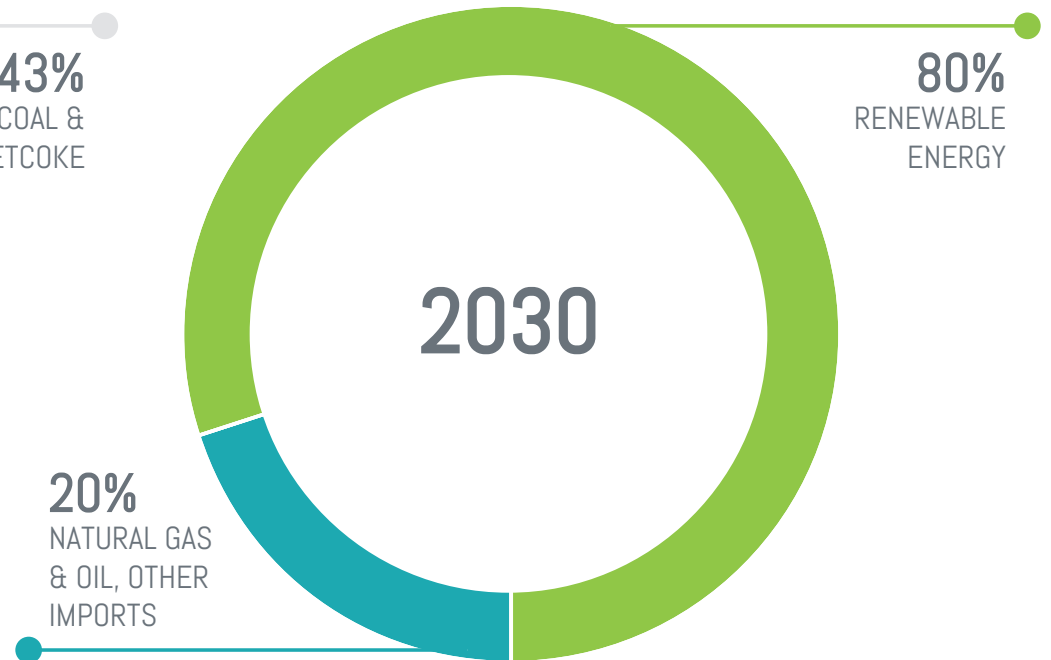
NOVA SCOTIA'S CURRENT ENERGY MIX



WHERE YOUR ENERGY COMES FROM NOW



WHERE WE'RE HEADED





COMMUNITY BENEFITS



We believe our projects are net positives for the local communities in which we work.

Benefits Include:

- ✓ Local tax revenues throughout the life of the project
- ✓ First Nation Partners to maximize contracting and employment opportunities
- ✓ Contracting opportunities for First Nations & community businesses
- ✓ Project creating local employment through the development, design and engineering phase
- ✓ Construction and operations jobs and support services during construction and throughout the life of the project
- ✓ Increased local spending on goods and services during the project's development, construction and operational phases



COMMUNITY CONTRIBUTIONS

Wind Strength, EverWind and RES seek to be a good corporate citizens in the community and typically supports various fundraising events and special initiatives that benefit the local community

Examples of activities or organizations we have supported:

- Economic development
- Local charities
- Local sports teams
- Museums and libraries
- Agricultural associations
- ...and many more!

Do you have an idea of ways we can support your community?
Let us know!





LOCAL JOB CREATION



This project is generating local employment through the development, construction operational phases and for the life of the project.

125-150 Temporary Jobs During Construction:

- ✓ General labour
- ✓ Civil construction trades
- ✓ Electricians
- ✓ Transmission line technicians
- ✓ HV equipment trades
- ✓ Crane operators
- ✓ Wind technicians

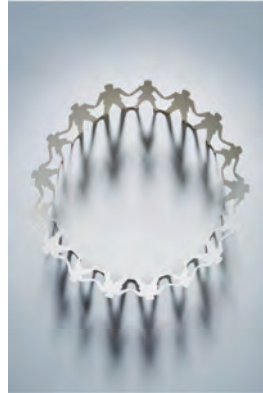
5+ Permanent Jobs During Operations and Maintenance:

- ✓ HV technicians/electricians
- ✓ Wind technicians
- ✓ Other indirect jobs for items such as road maintenance

On the job training for some positions



DIRECT BENEFITS FOR THE LOCAL COMMUNITY



- ✓ **Electricity subsidy fund:** Once project design is finalized, eligible homeowners will be contacted directly to sign up for the program which will begin after the first year of operation. The program will offer to cover a portion of homeowners annual electricity bill. The program will be in effect throughout the life of the project.
- ✓ **Community vibrancy fund:** Once the project becomes operational, an annual financial allocation will be earmarked and remain accessible throughout the project's lifespan to support community. The fund's oversight will be entrusted to a committee comprising community members, council representatives, and project representatives.
- ✓ **Bursary fund:** Prior to commercial operations., a fund will be made available to community members who want to train the renewables industry.

We would love to discuss with you and garner your feedback on how we can support the community



CONCLUSION



Thank you.

We appreciate you taking the time to join us. We would be happy to follow-up with you if you have any other questions about the Project. Please fill out a feedback form.



Open House Kmt nuk - September 21, 2023 Surveys

Name: [REDACTED]
1. Did you find this event useful? Yes, somewhat
2. Were all your questions about our project answered? Yes, somewhat
3. Please share any comments, questions, or feedback you may have with the project Thanks. A community meeting with all involved community groups such as CCWF, SUNNS and Joan Baxter would be helpful, clarifying and serve as a true public platform
4. Do you have any ideas on how we can support the community? No comments provided

Name: [REDACTED]
1. Did you find this event useful? Yes, very
2. Were all your questions about our project answered? Yes, very
3. Please share any comments, questions, or feedback you may have with the project Again concerned that NS xxxx biodiversity, economic activity, moose for the sale of energy going to Germany when we have xxxx renewable targets to meet
4. Do you have any ideas on how we can support the community? Food bank, Homeless shelter, hospital (Col East Hants/Tatamagouche), Local recreation centres.

Name: [REDACTED]
1. Did you find this event useful? Yes, very
2. Were all your questions about our project answered? Yes, very Accommodation for jobs during construction I would be interested in the future as a partnership supplier.
3. Please share any comments, questions, or feedback you may have with the project No comments provided
4. Do you have any ideas on how we can support the community? No comments provided

Name: [REDACTED]
1. Did you find this event useful? Yes, somewhat
2. Were all your questions about our project answered?

No, not really Length of time of provincial ...(illegible)
3. Please share any comments, questions, or feedback you may have with the project No comments provided
4. Do you have any ideas on how we can support the community? No comments provided

Name: [REDACTED]
1. How did you hear about this event? Paper – via email, from friend
2. How helpful was the information you received? 4 - helpful
3. Please provide your comments or feedback on the project Interested more in where the energy produced will be sold- purchased – concerned not benefiting renewable targets.

Name: [REDACTED]
1. How did you hear about this event? LinkedIn
2. How helpful was the information you received? 5 – very helpful
3. Please provide your comments or feedback on the project Great for local economy/economic future of our province. Creation of local employment opportunities.



5516 Spring Garden Rd., 4th Floor
Halifax, NS
B3J 1G6
Ph: 902-478-7651
Fax: 425-5606
E-mail: gm@snowmobilersNS.com

October 6, 2023

Wju'snewikaq - Wind Strength
2101-1969 Upper Water Street
Halifax, NS | B3J 3R7
Canada

Re: Letter of Support - Wind Energy Projects

Dear Wju'snewikaq,

Through this letter, The Snowmobilers Association of Nova Scotia (SANS) would like to express its support to the Wju'snewikaq (Wind Strength) Project team in relation to the development of the Kmt nuk and Bear Lake wind energy Projects.

SANS has met with Wju'snewikaq in more than one occasion and have been able to answer most of our questions and address our concerns. It is our opinion that the developer that has been engaged (RES) is an experienced and knowledgeable developer of large-scale wind energy Projects and capable of developing and constructing large scale wind projects.

We look forward to continuing to engage with Wju'snewikaq and their team as the Project progresses.

Yours Truly,

Mike Eddy

Mike Eddy, General Manager, Snowmobilers Association of Nova Scotia (SANS)