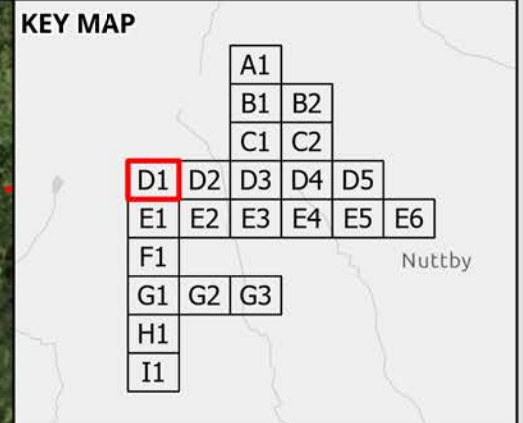
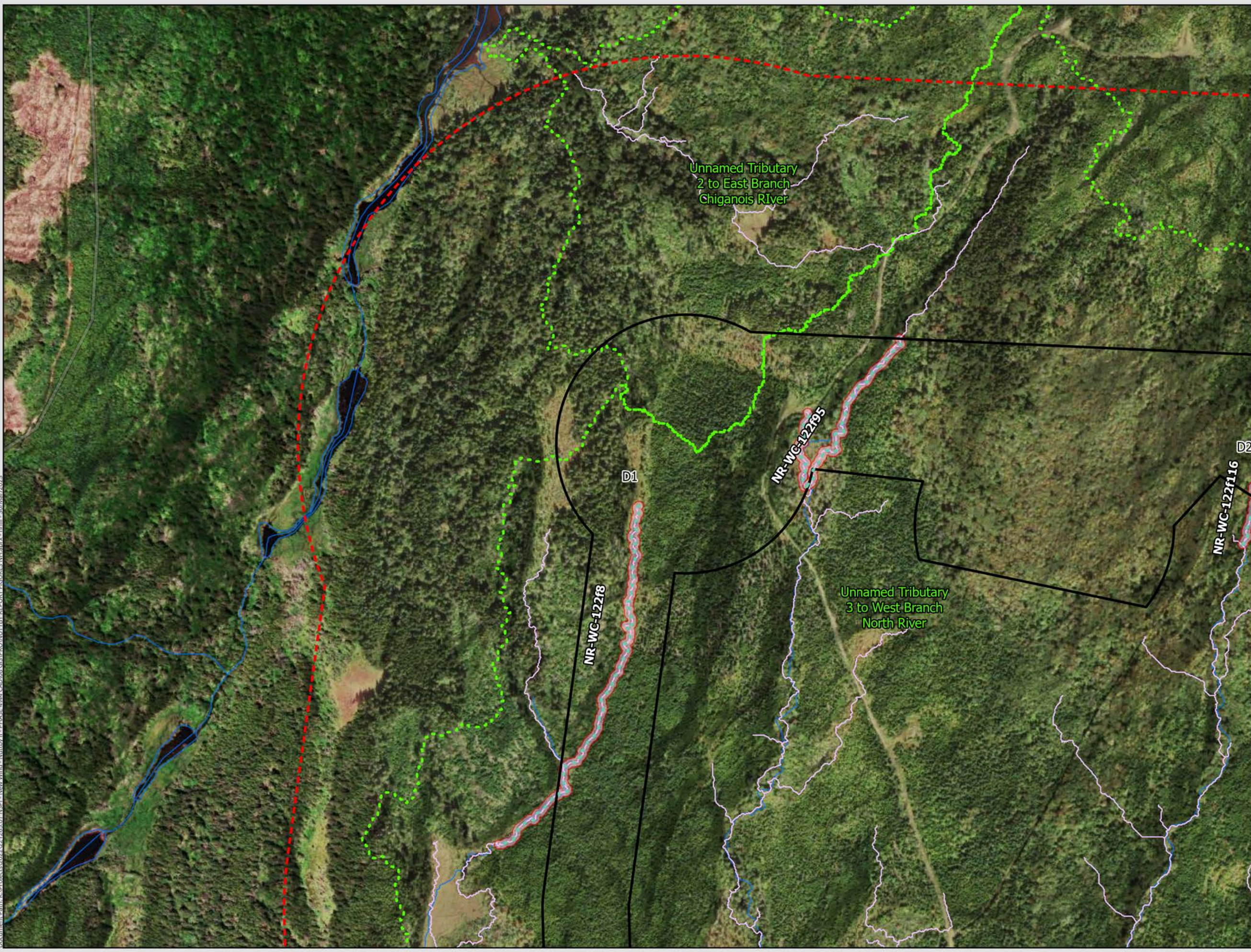


Document Path: K:\Projects\2022\21265.01 NSPI - New Wind - Nuttby II - PHASE 4\44 CAD\08 GIS\PRO\NUTTBY REPORT FIGURES\NH.aprx - nhill - 30/Mar/2023



- LEGEND**
- Fish Observation (CBCL 2022)
 - Beaver Dam (CBCL 2022)
 - Waterfall (CBCL 2022)
 - Quaternary Watersheds
 - Preliminary Assessment Area
 - Study Area (Phase 4)
 - Predicted Water Flowpath (CBCL 2022)
 - Fish Bearing Watercourse (CBCL 2022)
 - Potential Fish Bearing Watercourse (CBCL 2022)
 - Non-Fish Bearing Watercourse (CBCL 2022)
 - Assessed Watercourses (CBCL 2022)**
 - Large Permanent
 - Small Permanent
 - Small Permanent with Intermittent Characteristics
 - Intermittent
 - Intermittent with Ephemeral Characteristics
 - Ephemeral with Intermittent Characteristics
 - Ephemeral
 - Provincially Mapped Watercourse

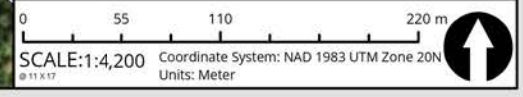


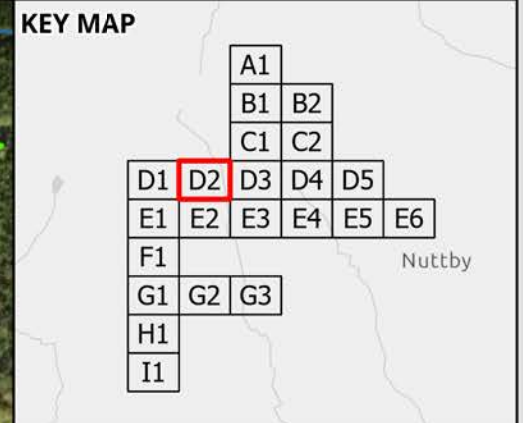
**NSPI NUTTBY II
NEW WIND**

**WATERCOURSE CLASSIFICATION
AND FIELD RESULTS**

DATE: 2023-03-30	PROJ N°: 221265.01	FIGURE: WC-D1
DRAWN BY: NH	CHECKED BY: MB	APPROVED: LH

NOTES:





- ### LEGEND
- Fish Observation (CBCL 2022)
 - Beaver Dam (CBCL 2022)
 - Waterfall (CBCL 2022)
 - Quaternary Watersheds
 - Preliminary Assessment Area
 - Study Area (Phase 4)
 - Predicted Water Flowpath (CBCL 2022)
 - Fish Bearing Watercourse (CBCL 2022)
 - Potential Fish Bearing Watercourse (CBCL 2022)
 - Non-Fish Bearing Watercourse (CBCL 2022)
 - Assessed Watercourses (CBCL 2022)**
 - Large Permanent
 - Small Permanent
 - Small Permanent with Intermittent Characteristics
 - Intermittent
 - Intermittent with Ephemeral Characteristics
 - Ephemeral with Intermittent Characteristics
 - Ephemeral
 - Provincially Mapped Watercourse



NSPI NUTTBY II NEW WIND

WATERCOURSE CLASSIFICATION AND FIELD RESULTS

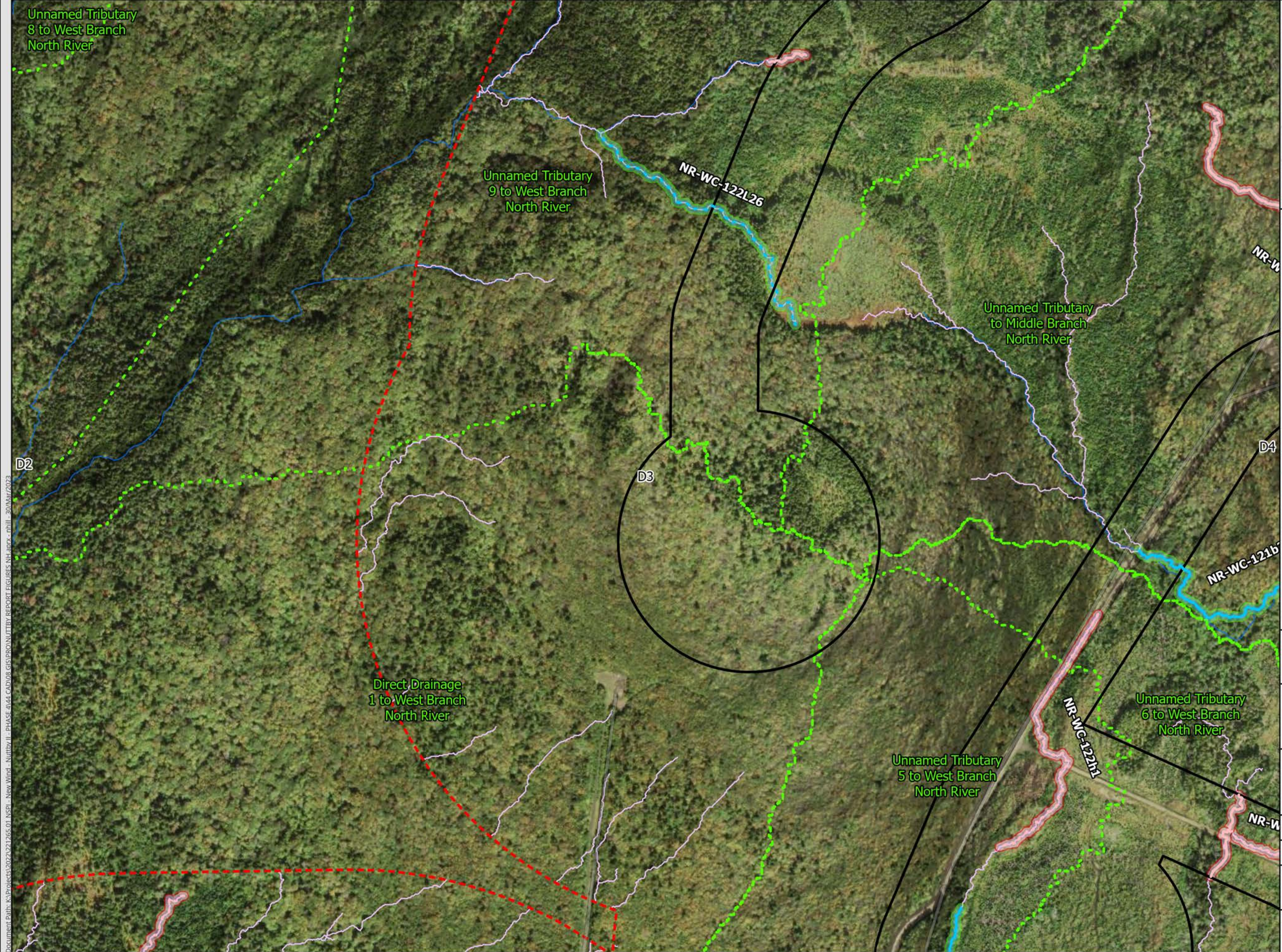
DATE: 2023-03-30	PROJ N°: 221265.01	FIGURE: WC-D2
DRAWN BY: NH	CHECKED BY: MB	APPROVED: LH

NOTES:

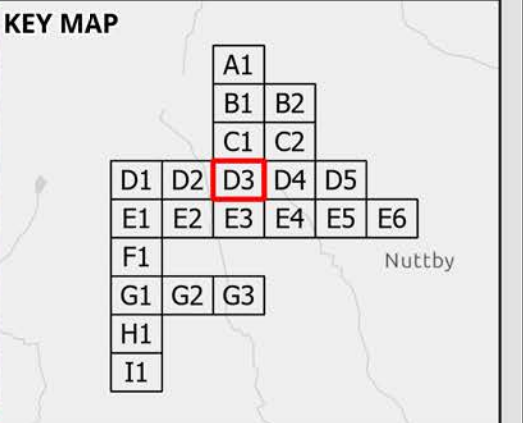
0 55 110 220 m

SCALE: 1:4,200 Coordinate System: NAD 1983 UTM Zone 20N Units: Meter

Document Path: K:\Projects\2022\221265.01 NSPI - New Wind - Nuttby II - PHASE 4\44 CAD\08 GIS\PRO\NUTTBY REPORT FIGURES NH.aprx - nhill - 30/Mar/2023



Document Path: K:\Projects\2022\21265.01 NSPI - New Wind - Nuttby II - PHASE 4\44 CAD\08 GIS\PRO\NUTTBY REPORT FIGURES\NH.aprx - nhill - 30/Mar/2023



- LEGEND**
- Fish Observation (CBCL 2022)
 - Beaver Dam (CBCL 2022)
 - Waterfall (CBCL 2022)
 - Quaternary Watersheds
 - Preliminary Assessment Area
 - Study Area (Phase 4)
 - Predicted Water Flowpath (CBCL 2022)
 - Fish Bearing Watercourse (CBCL 2022)
 - Potential Fish Bearing Watercourse (CBCL 2022)
 - Non-Fish Bearing Watercourse (CBCL 2022)
- Assessed Watercourses (CBCL 2022)**
- Large Permanent
 - Small Permanent
 - Small Permanent with Intermittent Characteristics
 - Intermittent
 - Intermittent with Ephemeral Characteristics
 - Ephemeral with Intermittent Characteristics
 - Ephemeral
 - Provincially Mapped Watercourse



**NSPI NUTTBY II
NEW WIND**

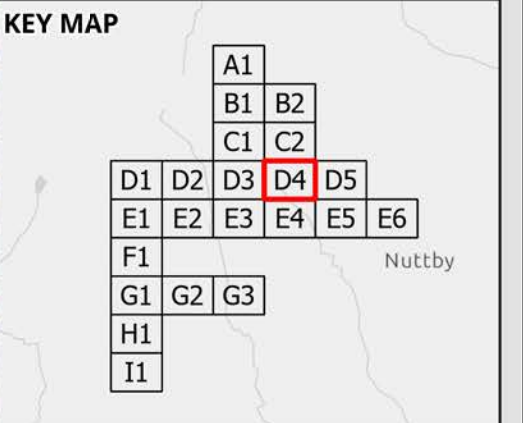
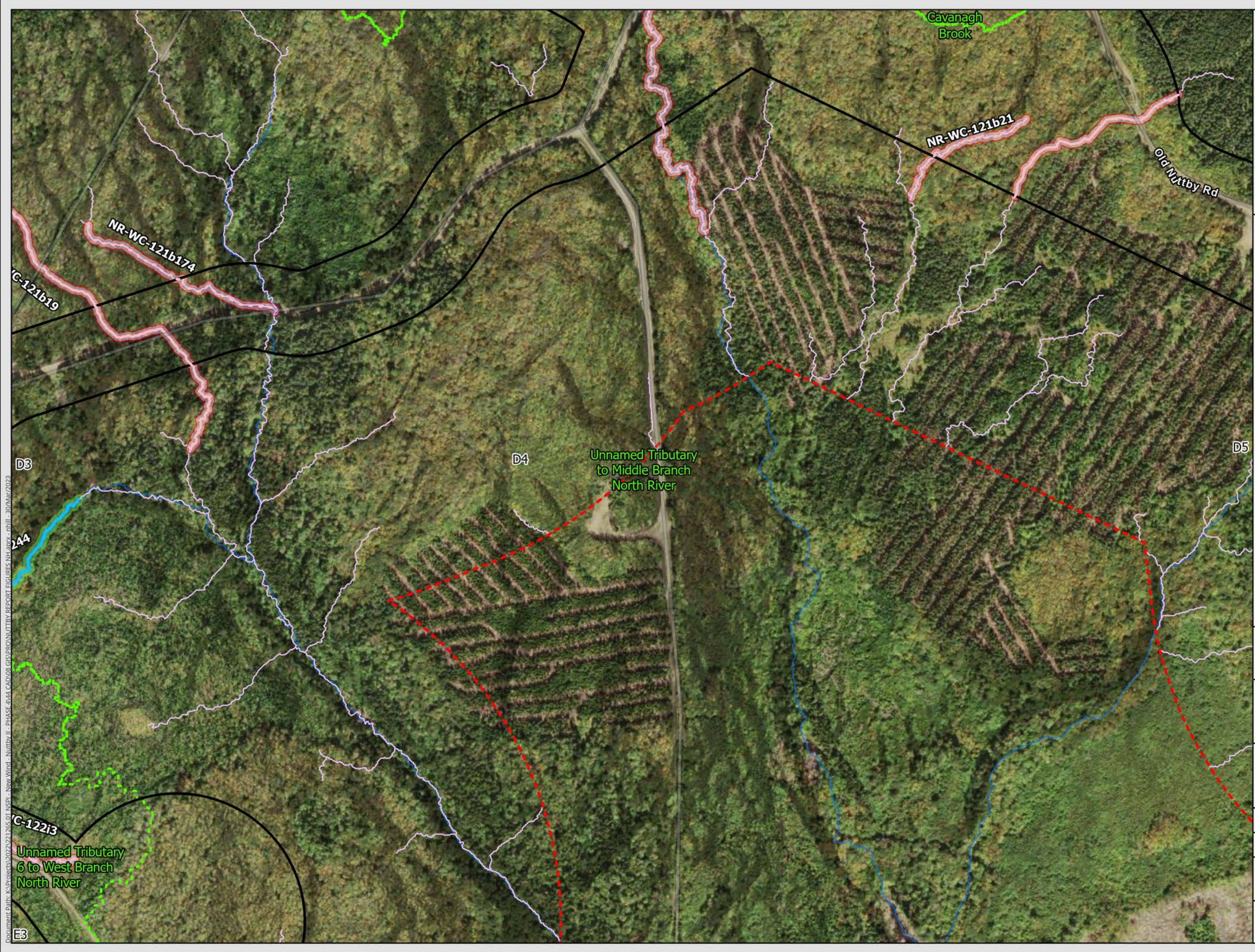
**WATERCOURSE CLASSIFICATION
AND FIELD RESULTS**

DATE: 2023-03-30	PROJ N°: 221265.01	FIGURE: WC-D3
DRAWN BY: NH	CHECKED BY: MB	APPROVED: LH

NOTES:

0 55 110 220 m

SCALE: 1:4,200 Coordinate System: NAD 1983 UTM Zone 20N
Units: Meter



- LEGEND**
- Fish Observation (CBCL 2022)
 - Beaver Dam (CBCL 2022)
 - Waterfall (CBCL 2022)
 - Quaternary Watersheds
 - Preliminary Assessment Area
 - Study Area (Phase 4)
 - Predicted Water Flowpath (CBCL 2022)
 - Fish Bearing Watercourse (CBCL 2022)
 - Potential Fish Bearing Watercourse (CBCL 2022)
 - Non-Fish Bearing Watercourse (CBCL 2022)
- Assessed Watercourses (CBCL 2022)**
- Large Permanent
 - Small Permanent
 - Small Permanent with Intermittent Characteristics
 - Intermittent
 - Intermittent with Ephemeral Characteristics
 - Ephemeral with Intermittent Characteristics
 - Ephemeral
 - Provincially Mapped Watercourse



**NSPI NUTTBY II
NEW WIND**

**WATERCOURSE CLASSIFICATION
AND FIELD RESULTS**

DATE: 2023-03-30	PROJ N°: 221265.01	FIGURE: WC-D4
DRAWN BY: NH	CHECKED BY: MB	APPROVED: LH

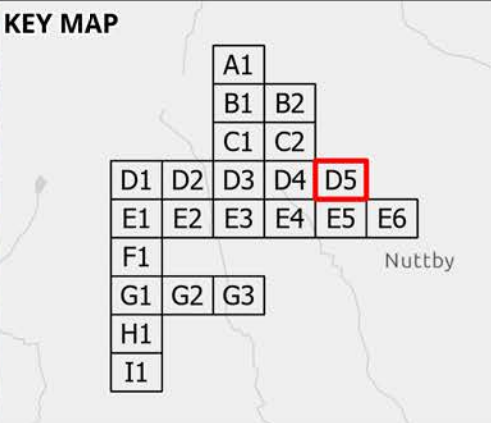
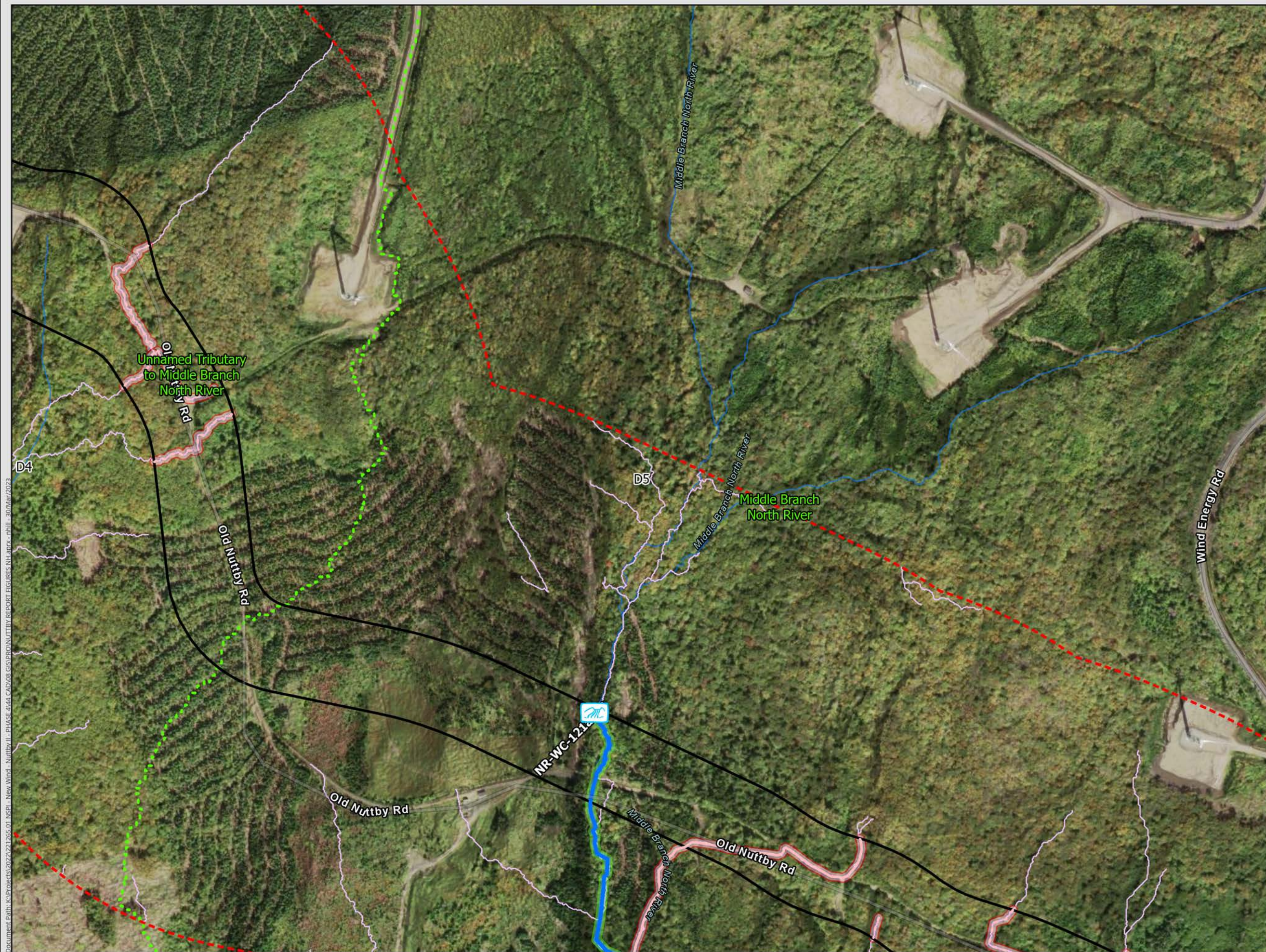
NOTES:

0 55 110 220 m

SCALE: 1:4,200 Coordinate System: NAD 1983 UTM Zone 20N
Units: Meter

Document Path: K:\Projects\2022\221265.01 NSPI - New Wind - Nuttby II - PHASE 4\44 CAD\08 GIS\PRO\NUTTBY REPORT FIGURES NH.docx - nhill - 30/Mar/2023

EB



- ### LEGEND
- Fish Observation (CBCL 2022)
 - Beaver Dam (CBCL 2022)
 - Waterfall (CBCL 2022)
 - Quaternary Watersheds
 - Preliminary Assessment Area
 - Study Area (Phase 4)
 - Predicted Water Flowpath (CBCL 2022)
 - Fish Bearing Watercourse (CBCL 2022)
 - Potential Fish Bearing Watercourse (CBCL 2022)
 - Non-Fish Bearing Watercourse (CBCL 2022)
- #### Assessed Watercourses (CBCL 2022)
- Large Permanent
 - Small Permanent
 - Small Permanent with Intermittent Characteristics
 - Intermittent
 - Intermittent with Ephemeral Characteristics
 - Ephemeral with Intermittent Characteristics
 - Ephemeral
 - Provincially Mapped Watercourse

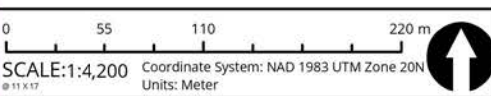


NSPI NUTTBY II NEW WIND

WATERCOURSE CLASSIFICATION AND FIELD RESULTS

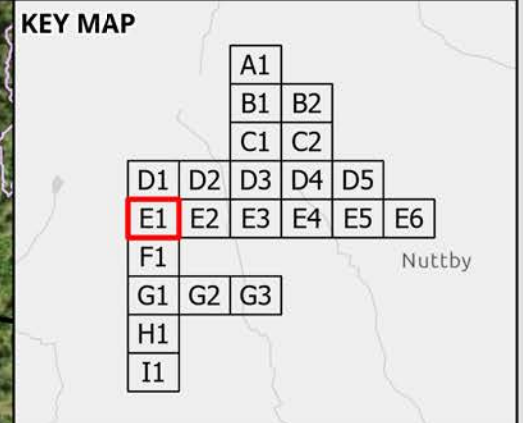
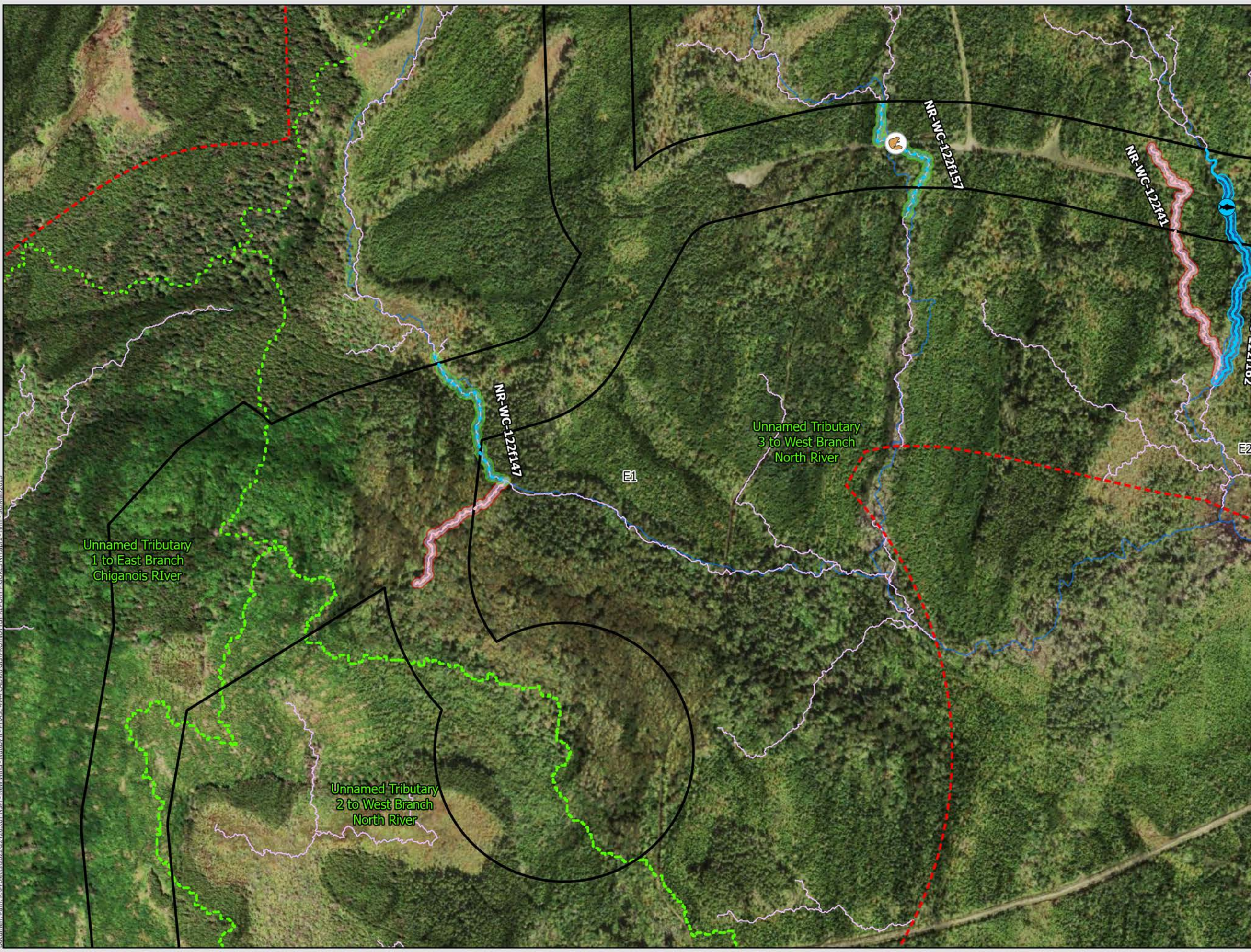
DATE: 2023-03-30	PROJ N°: 221265.01	FIGURE: WC-D5
DRAWN BY: NH	CHECKED BY: MB	APPROVED: LH

NOTES:



Document Path: K:\Projects\2022\221265.01 NSPI - New Wind - Nuttby II - PHASE 4\44 CAD\08 GIS\PRO\NUTTBY REPORT FIGURES\NH.docx - nhill - 30/Mar/2023

Document Path: K:\Projects\2022\221265.01 NSPI - New Wind - Nuttby II - PHASE 4\44 CAD\08 GIS\PRO\NUTTBY REPORT FIGURES\NH\doc - nhill - 30Mar2023



- LEGEND**
- Fish Observation (CBCL 2022)
 - Beaver Dam (CBCL 2022)
 - Waterfall (CBCL 2022)
 - Quaternary Watersheds
 - Preliminary Assessment Area
 - Study Area (Phase 4)
 - Predicted Water Flowpath (CBCL 2022)
 - Fish Bearing Watercourse (CBCL 2022)
 - Potential Fish Bearing Watercourse (CBCL 2022)
 - Non-Fish Bearing Watercourse (CBCL 2022)
 - Assessed Watercourses (CBCL 2022)**
 - Large Permanent
 - Small Permanent
 - Small Permanent with Intermittent Characteristics
 - Intermittent
 - Intermittent with Ephemeral Characteristics
 - Ephemeral with Intermittent Characteristics
 - Ephemeral
 - Provincially Mapped Watercourse



**NSPI NUTTBY II
NEW WIND**

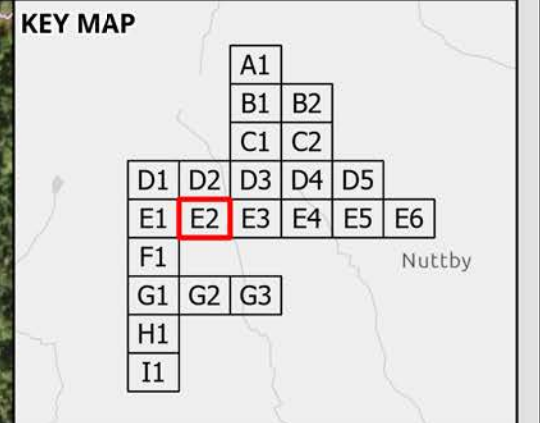
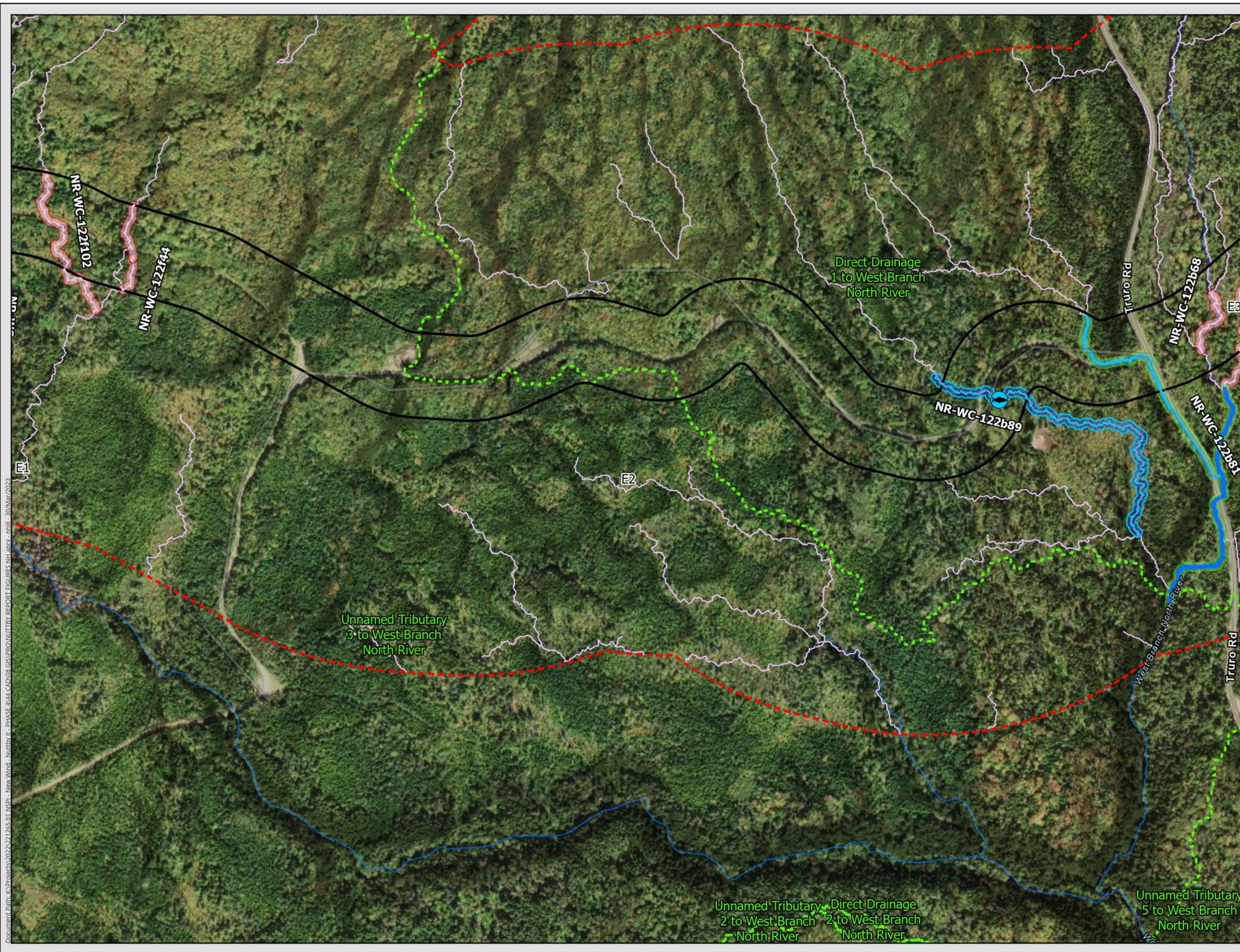
**WATERCOURSE CLASSIFICATION
AND FIELD RESULTS**

DATE: 2023-03-30	PROJ N°: 221265.01	FIGURE: WC-E1
DRAWN BY: NH	CHECKED BY: MB	APPROVED: LH

NOTES:

0 55 110 220 m

SCALE: 1:4,200 Coordinate System: NAD 1983 UTM Zone 20N Units: Meter



- LEGEND**
- Fish Observation (CBCL 2022)
 - Beaver Dam (CBCL 2022)
 - Waterfall (CBCL 2022)
 - Quaternary Watersheds
 - Preliminary Assessment Area
 - Study Area (Phase 4)
 - Predicted Water Flowpath (CBCL 2022)
 - Fish Bearing Watercourse (CBCL 2022)
 - Potential Fish Bearing Watercourse (CBCL 2022)
 - Non-Fish Bearing Watercourse (CBCL 2022)
- Assessed Watercourses (CBCL 2022)**
- Large Permanent
 - Small Permanent
 - Small Permanent with Intermittent Characteristics
 - Intermittent
 - Intermittent with Ephemeral Characteristics
 - Ephemeral with Intermittent Characteristics
 - Ephemeral
 - Provincially Mapped Watercourse



**NSPI NUTTBY II
NEW WIND**

**WATERCOURSE CLASSIFICATION
AND FIELD RESULTS**

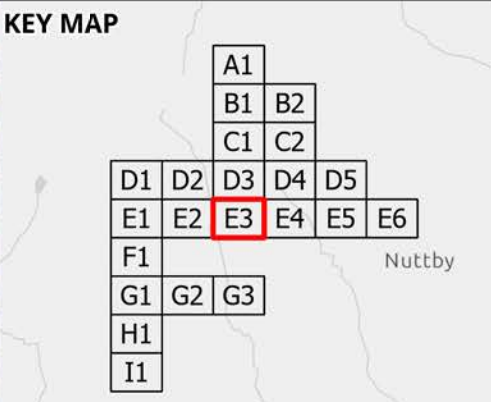
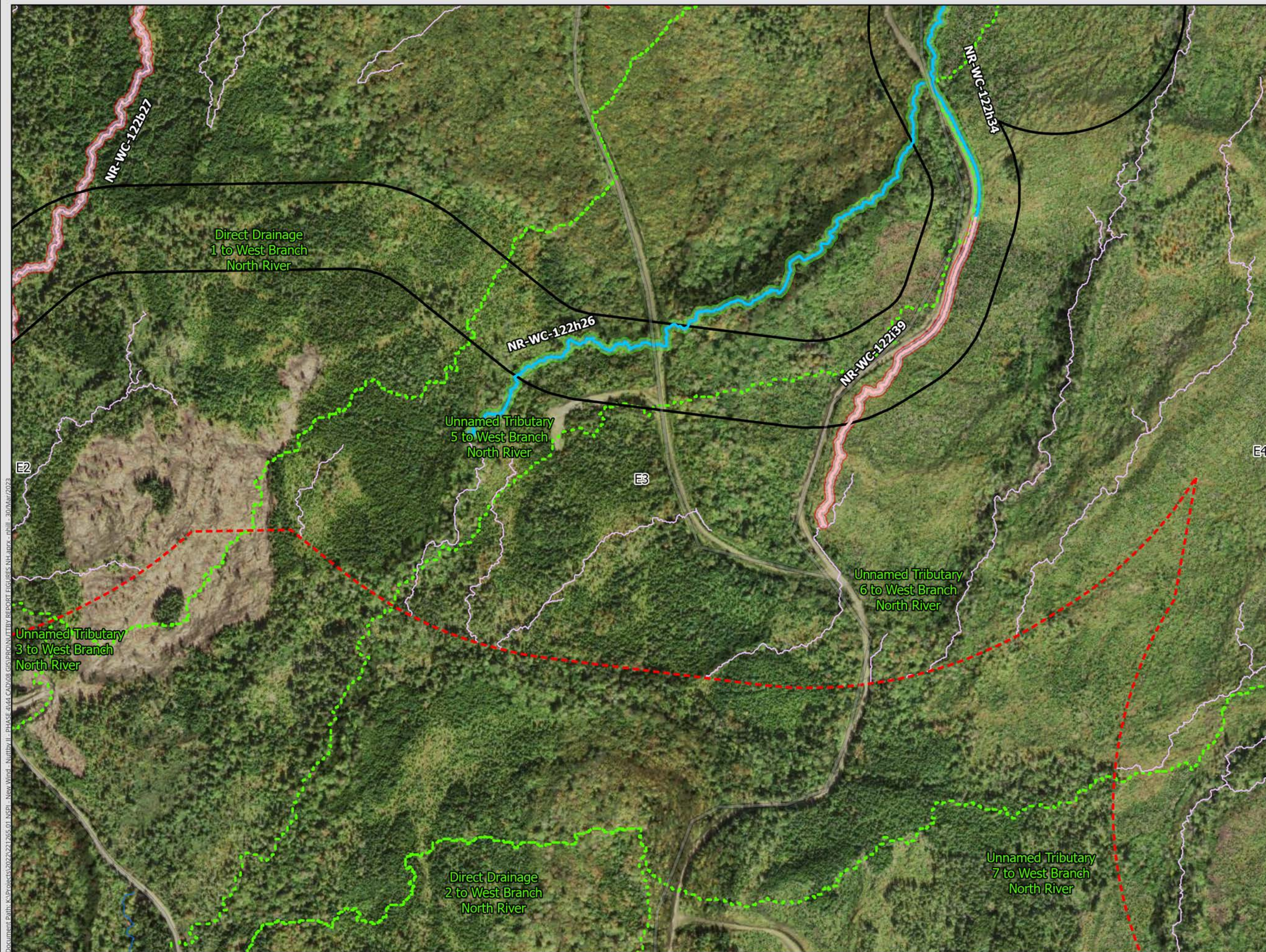
DATE: 2023-03-30	PROJ N°: 221265.01	FIGURE: WC-E2
DRAWN BY: NH	CHECKED BY: MB	APPROVED: LH

NOTES:

0 55 110 220 m

SCALE: 1:4,200 Coordinate System: NAD 1983 UTM Zone 20N Units: Meter

Document Path: K:\Projects\2022\221265.01 NSPI - New Wind - Nuttby II - PHASE 4\44 CAD\08 GIS\PROGNUTTBY REPORT FIGURES NH.docx - nhill - 30/Mar/2023



- LEGEND**
- Fish Observation (CBCL 2022)
 - Beaver Dam (CBCL 2022)
 - Waterfall (CBCL 2022)
 - Quaternary Watersheds
 - Preliminary Assessment Area
 - Study Area (Phase 4)
 - Predicted Water Flowpath (CBCL 2022)
 - Fish Bearing Watercourse (CBCL 2022)
 - Potential Fish Bearing Watercourse (CBCL 2022)
 - Non-Fish Bearing Watercourse (CBCL 2022)
- Assessed Watercourses (CBCL 2022)**
- Large Permanent
 - Small Permanent
 - Small Permanent with Intermittent Characteristics
 - Intermittent
 - Intermittent with Ephemeral Characteristics
 - Ephemeral with Intermittent Characteristics
 - Ephemeral
 - Provincially Mapped Watercourse



**NSPI NUTTBY II
NEW WIND**

**WATERCOURSE CLASSIFICATION
AND FIELD RESULTS**

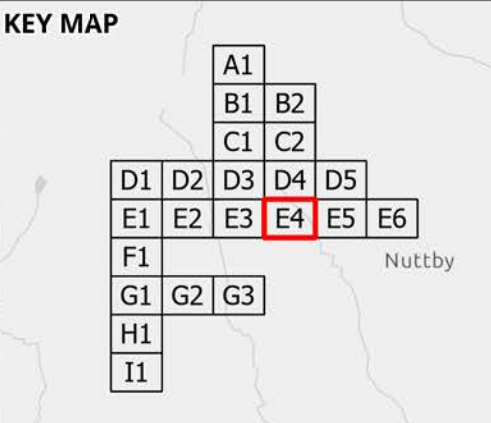
DATE: 2023-03-30	PROJ N°: 221265.01	FIGURE: WC-E3
DRAWN BY: NH	CHECKED BY: MB	APPROVED: LH

NOTES:

0 55 110 220 m

SCALE: 1:4,200 Coordinate System: NAD 1983 UTM Zone 20N
Units: Meter

Document Path: K:\Projects\2022\221265.01 NSPI - New Wind - Nuttby II - PHASE 4\44 CAD\08 GIS\PROJ\NUTTBY REPORT FIGURES\NH.docx - nhill - 30/Mar/2023



- LEGEND**
- Fish Observation (CBCL 2022)
 - Beaver Dam (CBCL 2022)
 - Waterfall (CBCL 2022)
 - Quaternary Watersheds
 - Preliminary Assessment Area
 - Study Area (Phase 4)
 - Predicted Water Flowpath (CBCL 2022)
 - Fish Bearing Watercourse (CBCL 2022)
 - Potential Fish Bearing Watercourse (CBCL 2022)
 - Non-Fish Bearing Watercourse (CBCL 2022)
- Assessed Watercourses (CBCL 2022)**
- Large Permanent
 - Small Permanent
 - Small Permanent with Intermittent Characteristics
 - Intermittent
 - Intermittent with Ephemeral Characteristics
 - Ephemeral with Intermittent Characteristics
 - Ephemeral
 - Provincially Mapped Watercourse

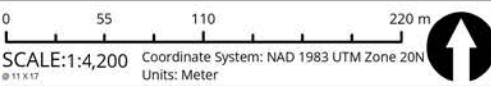


**NSPI NUTTBY II
NEW WIND**

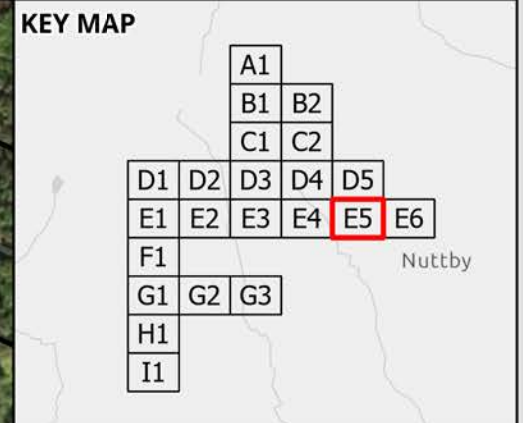
**WATERCOURSE CLASSIFICATION
AND FIELD RESULTS**

DATE: 2023-03-30	PROJ N°: 221265.01	FIGURE: WC-E4
DRAWN BY: NH	CHECKED BY: MB	APPROVED: LH

NOTES:



Document Path: K:\Projects\2022\221265.01 NSPI - New Wind - Nuttby II - PHASE 4\44 CAD\08 GIS\PROGNUTTBY REPORT FIGURES NH.docx - nhill - 30/Mar/2023



- LEGEND**
- Fish Observation (CBCL 2022)
 - Beaver Dam (CBCL 2022)
 - Waterfall (CBCL 2022)
 - Quaternary Watersheds
 - Preliminary Assessment Area
 - Study Area (Phase 4)
 - Predicted Water Flowpath (CBCL 2022)
 - Fish Bearing Watercourse (CBCL 2022)
 - Potential Fish Bearing Watercourse (CBCL 2022)
 - Non-Fish Bearing Watercourse (CBCL 2022)
 - Assessed Watercourses (CBCL 2022)**
 - Large Permanent
 - Small Permanent
 - Small Permanent with Intermittent Characteristics
 - Intermittent
 - Intermittent with Ephemeral Characteristics
 - Ephemeral with Intermittent Characteristics
 - Ephemeral
 - Provincially Mapped Watercourse



**NSPI NUTTBY II
NEW WIND**

**WATERCOURSE CLASSIFICATION
AND FIELD RESULTS**

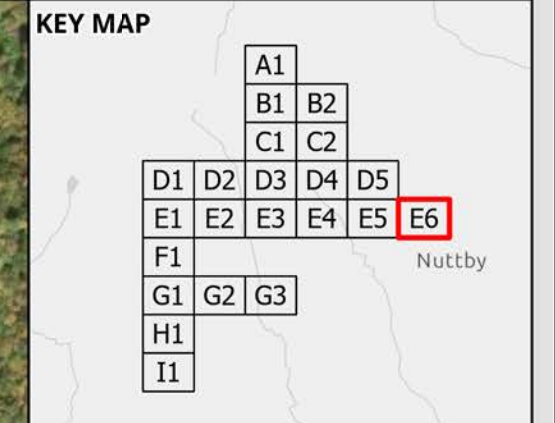
DATE: 2023-03-30	PROJ N°: 221265.01	FIGURE: WC-E5
DRAWN BY: NH	CHECKED BY: MB	APPROVED: LH

NOTES:

0 55 110 220 m

SCALE: 1:4,200 Coordinate System: NAD 1983 UTM Zone 20N
Units: Meter

Document Path: K:\Projects\2022\221265.01 NSPI - New Wind - Nuttby II - PHASE 4\44 CAD\08 GIS\PROJ\NUTTBY REPORT FIGURES\NH.aprx - nhill - 30/Mar/2023



- ### LEGEND
- Fish Observation (CBCL 2022)
 - Beaver Dam (CBCL 2022)
 - Waterfall (CBCL 2022)
 - Quaternary Watersheds
 - Preliminary Assessment Area
 - Study Area (Phase 4)
 - Predicted Water Flowpath (CBCL 2022)
 - Fish Bearing Watercourse (CBCL 2022)
 - Potential Fish Bearing Watercourse (CBCL 2022)
 - Non-Fish Bearing Watercourse (CBCL 2022)
- Assessed Watercourses (CBCL 2022)
- Large Permanent
 - Small Permanent
 - Small Permanent with Intermittent Characteristics
 - Intermittent
 - Intermittent with Ephemeral Characteristics
 - Ephemeral with Intermittent Characteristics
 - Ephemeral
 - Provincially Mapped Watercourse

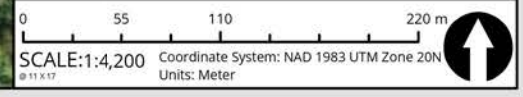


NSPI NUTTBY II NEW WIND

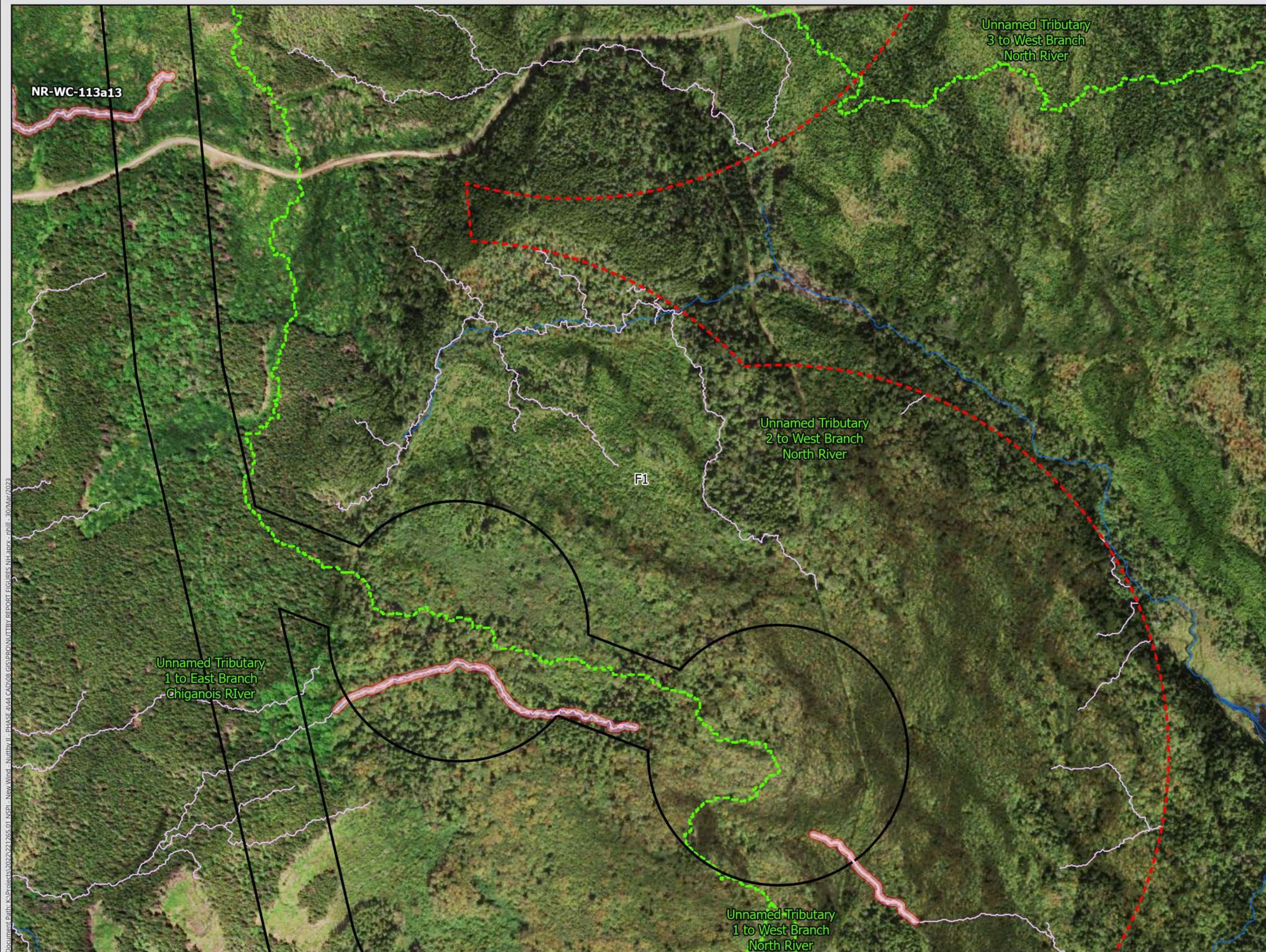
WATERCOURSE CLASSIFICATION AND FIELD RESULTS

DATE: 2023-03-30	PROJ N°: 221265.01	FIGURE: WC-E6
DRAWN BY: NH	CHECKED BY: MB	APPROVED: LH

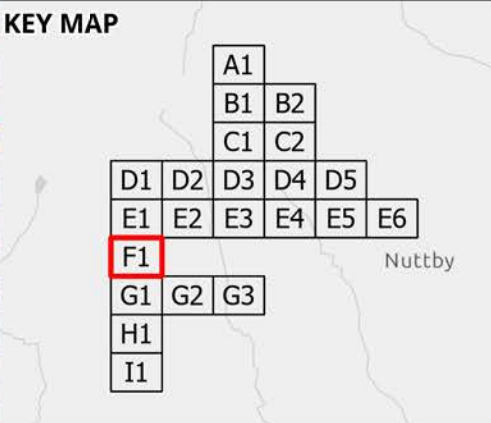
NOTES:



Document Path: K:\Projects\2022\221265.01 NSPI - New Wind - Nuttby II - PHASE 4\44 CAD\08 GIS\PROJ\NUTTBY REPORT FIGURES\NH\proj_nhill_30Mar2023



Document Path: K:\Projects\2022\21265_01_NSPI - New Wind - Nuttby II - PHASE 4\44 CAD\08 GIS\PROJ\NUTTBY REPORT FIGURES\NH.docx - nhill - 30/Mar/2023



- LEGEND**
- Fish Observation (CBCL 2022)
 - Beaver Dam (CBCL 2022)
 - Waterfall (CBCL 2022)
 - Quaternary Watersheds
 - Preliminary Assessment Area
 - Study Area (Phase 4)
 - Predicted Water Flowpath (CBCL 2022)
 - Fish Bearing Watercourse (CBCL 2022)
 - Potential Fish Bearing Watercourse (CBCL 2022)
 - Non-Fish Bearing Watercourse (CBCL 2022)
- Assessed Watercourses (CBCL 2022)
- Large Permanent
 - Small Permanent
 - Small Permanent with Intermittent Characteristics
 - Intermittent
 - Intermittent with Ephemeral Characteristics
 - Ephemeral with Intermittent Characteristics
 - Ephemeral
 - Provincially Mapped Watercourse



**NSPI NUTTBY II
NEW WIND**

**WATERCOURSE CLASSIFICATION
AND FIELD RESULTS**

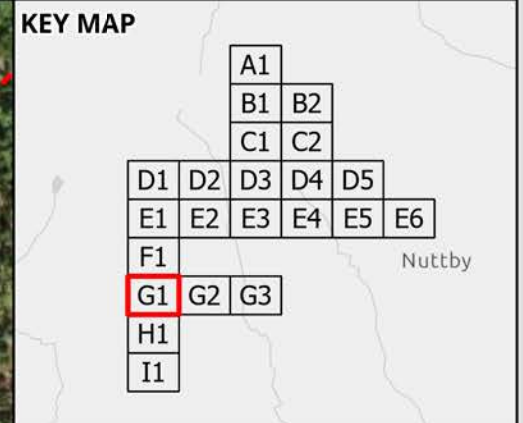
DATE: 2023-03-30	PROJ N°: 221265.01	FIGURE: WC-F1
DRAWN BY: NH	CHECKED BY: MB	APPROVED: LH

NOTES:

0 55 110 220 m

SCALE: 1:4,200 Coordinate System: NAD 1983 UTM Zone 20N
Units: Meter

Document Path: K:\Projects\2022\221265.01 NSPI - New Wind - Nuttby II - PHASE 4\44 CAD\08 GIS\PROJ\NUTTBY REPORT FIGURES\NH\map - nh\11_30\Mar\2023



- ### LEGEND
- Fish Observation (CBCL 2022)
 - Beaver Dam (CBCL 2022)
 - Waterfall (CBCL 2022)
 - Quaternary Watersheds
 - Preliminary Assessment Area
 - Study Area (Phase 4)
 - Predicted Water Flowpath (CBCL 2022)
 - Fish Bearing Watercourse (CBCL 2022)
 - Potential Fish Bearing Watercourse (CBCL 2022)
 - Non-Fish Bearing Watercourse (CBCL 2022)
 - Assessed Watercourses (CBCL 2022)**
 - Large Permanent
 - Small Permanent
 - Small Permanent with Intermittent Characteristics
 - Intermittent
 - Intermittent with Ephemeral Characteristics
 - Ephemeral with Intermittent Characteristics
 - Ephemeral
 - Provincially Mapped Watercourse



NSPI NUTTBY II NEW WIND

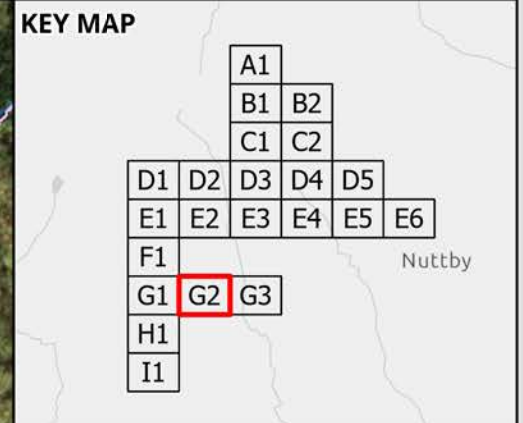
WATERCOURSE CLASSIFICATION AND FIELD RESULTS

DATE: 2023-03-30	PROJ N°: 221265.01	FIGURE: WC-G1
DRAWN BY: NH	CHECKED BY: MB	APPROVED: LH

NOTES:

0 55 110 220 m

SCALE: 1:4,200 Coordinate System: NAD 1983 UTM Zone 20N Units: Meter



- LEGEND**
- Fish Observation (CBCL 2022)
 - Beaver Dam (CBCL 2022)
 - Waterfall (CBCL 2022)
 - Quaternary Watersheds
 - Preliminary Assessment Area
 - Study Area (Phase 4)
 - Predicted Water Flowpath (CBCL 2022)
 - Fish Bearing Watercourse (CBCL 2022)
 - Potential Fish Bearing Watercourse (CBCL 2022)
 - Non-Fish Bearing Watercourse (CBCL 2022)
- Assessed Watercourses (CBCL 2022)**
- Large Permanent
 - Small Permanent
 - Small Permanent with Intermittent Characteristics
 - Intermittent
 - Intermittent with Ephemeral Characteristics
 - Ephemeral with Intermittent Characteristics
 - Ephemeral
 - Provincially Mapped Watercourse



**NSPI NUTTBY II
NEW WIND**

**WATERCOURSE CLASSIFICATION
AND FIELD RESULTS**

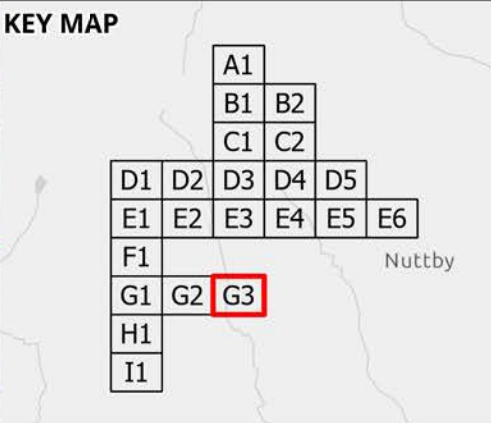
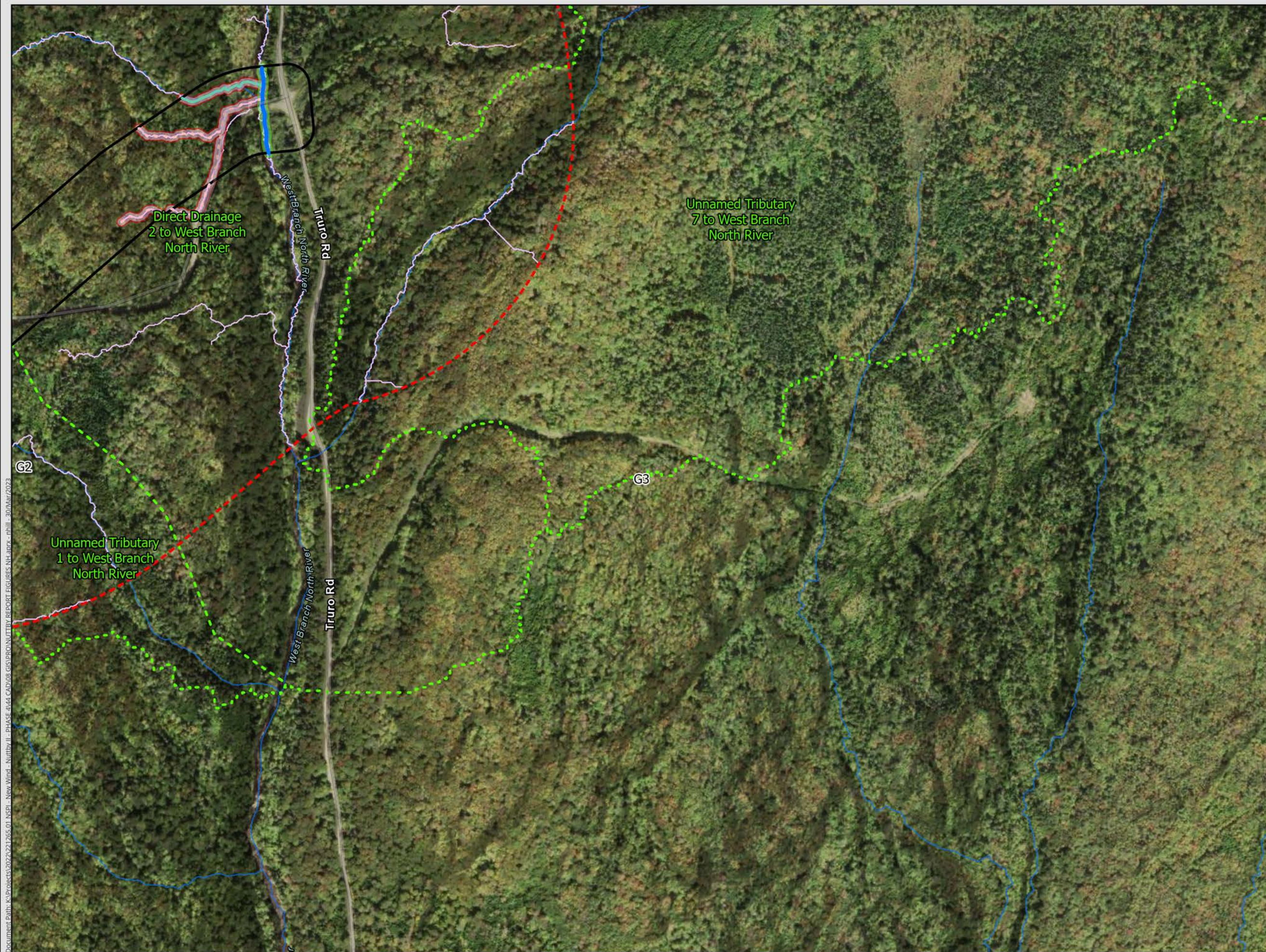
DATE: 2023-03-30	PROJ N°: 221265.01	FIGURE: WC-G2
DRAWN BY: NH	CHECKED BY: MB	APPROVED: LH

NOTES:

0 55 110 220 m

SCALE: 1:4,200 Coordinate System: NAD 1983 UTM Zone 20N Units: Meter

Document Path: K:\Projects\2022\221265.01 NSPI - New Wind - Nuttby II - PHASE 4\44 CAD\08 GIS\PRO\NUTTBY REPORT FIGURES\NH\proj - nhill - 30/Mar/2023



- LEGEND**
- Fish Observation (CBCL 2022)
 - Beaver Dam (CBCL 2022)
 - Waterfall (CBCL 2022)
 - Quaternary Watersheds
 - Preliminary Assessment Area
 - Study Area (Phase 4)
 - Predicted Water Flowpath (CBCL 2022)
 - Fish Bearing Watercourse (CBCL 2022)
 - Potential Fish Bearing Watercourse (CBCL 2022)
 - Non-Fish Bearing Watercourse (CBCL 2022)
- Assessed Watercourses (CBCL 2022)**
- Large Permanent
 - Small Permanent
 - Small Permanent with Intermittent Characteristics
 - Intermittent
 - Intermittent with Ephemeral Characteristics
 - Ephemeral with Intermittent Characteristics
 - Ephemeral
 - Provincially Mapped Watercourse



**NSPI NUTTBY II
NEW WIND**

**WATERCOURSE CLASSIFICATION
AND FIELD RESULTS**

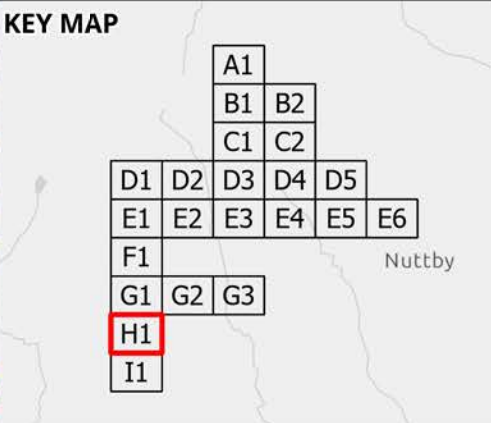
DATE: 2023-03-30	PROJ N°: 221265.01	FIGURE: WC-G3
DRAWN BY: NH	CHECKED BY: MB	APPROVED: LH

NOTES:

0 55 110 220 m

SCALE: 1:4,200 Coordinate System: NAD 1983 UTM Zone 20N Units: Meter

Document Path: K:\Projects\2022\221265.01 NSPI - New Wind - Nuttby II - PHASE 4\44 CAD\08 GIS\PROGNUTTBY REPORT FIGURES NH.docx - nhill - 30/Mar/2023



- LEGEND**
- Fish Observation (CBCL 2022)
 - Beaver Dam (CBCL 2022)
 - Waterfall (CBCL 2022)
 - Quaternary Watersheds
 - Preliminary Assessment Area
 - Study Area (Phase 4)
 - Predicted Water Flowpath (CBCL 2022)
 - Fish Bearing Watercourse (CBCL 2022)
 - Potential Fish Bearing Watercourse (CBCL 2022)
 - Non-Fish Bearing Watercourse (CBCL 2022)
- Assessed Watercourses (CBCL 2022)
- Large Permanent
 - Small Permanent
 - Small Permanent with Intermittent Characteristics
 - Intermittent
 - Intermittent with Ephemeral Characteristics
 - Ephemeral with Intermittent Characteristics
 - Ephemeral
 - Provincially Mapped Watercourse

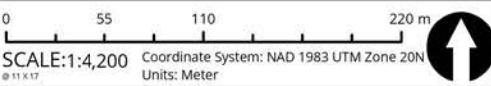


**NSPI NUTTBY II
NEW WIND**

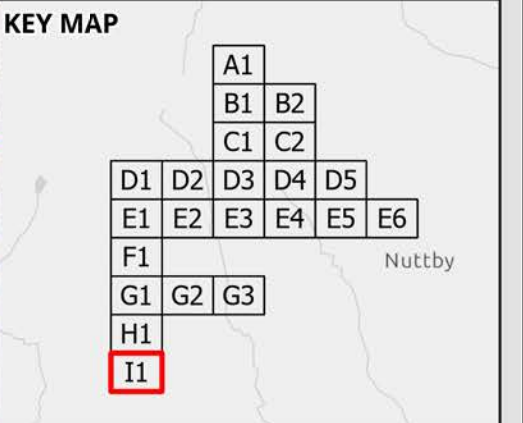
**WATERCOURSE CLASSIFICATION
AND FIELD RESULTS**

DATE: 2023-03-30	PROJ N°: 221265.01	FIGURE: WC-H1
DRAWN BY: NH	CHECKED BY: MB	APPROVED: LH

NOTES:



Document Path: K:\Projects\2022\221265.01 NSPI - New Wind - Nuttby II - PHASE 4\44 CAD\08 GIS\PRO\NUTTBY REPORT FIGURES\NH.aprx - nhill - 30/Mar/2023



- LEGEND**
- Fish Observation (CBCL 2022)
 - Beaver Dam (CBCL 2022)
 - Waterfall (CBCL 2022)
 - Quaternary Watersheds
 - Preliminary Assessment Area
 - Study Area (Phase 4)
 - Predicted Water Flowpath (CBCL 2022)
 - Fish Bearing Watercourse (CBCL 2022)
 - Potential Fish Bearing Watercourse (CBCL 2022)
 - Non-Fish Bearing Watercourse (CBCL 2022)
- Assessed Watercourses (CBCL 2022)
- Large Permanent
 - Small Permanent
 - Small Permanent with Intermittent Characteristics
 - Intermittent
 - Intermittent with Ephemeral Characteristics
 - Ephemeral with Intermittent Characteristics
 - Ephemeral
 - Provincially Mapped Watercourse



**NSPI NUTTBY II
NEW WIND**

**WATERCOURSE CLASSIFICATION
AND FIELD RESULTS**

DATE: 2023-03-30	PROJ N°: 221265.01	FIGURE: WC-I1
DRAWN BY: NH	CHECKED BY: MB	APPROVED: LH

NOTES:

0 55 110 220 m

SCALE: 1:4,200 Coordinate System: NAD 1983 UTM Zone 20N Units: Meter

Document Path: K:\Projects\2022\221265.01 NSPI - New Wind - Nuttby II - PHASE 4\44 CAD\08 GIS\PRO\NUTTBY REPORT FIGURES\NH.aprx - nhill - 30/Mar/2023