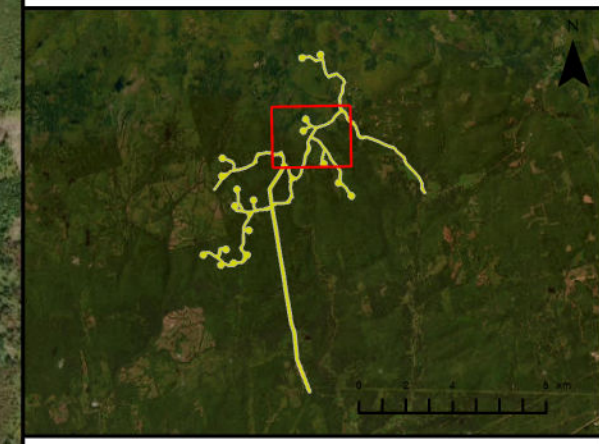
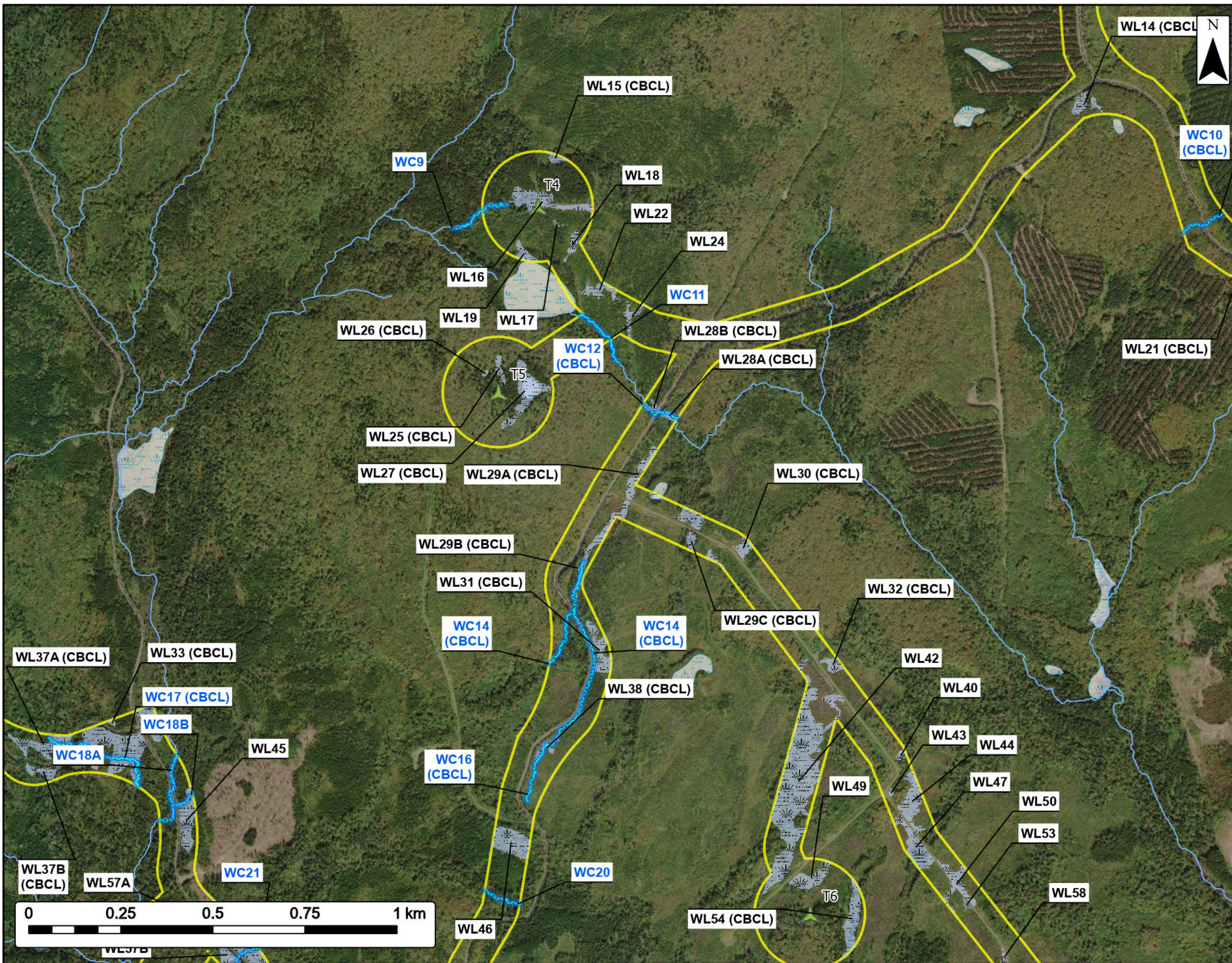


# KmtnuK Wind Power Project

## Field Assessments

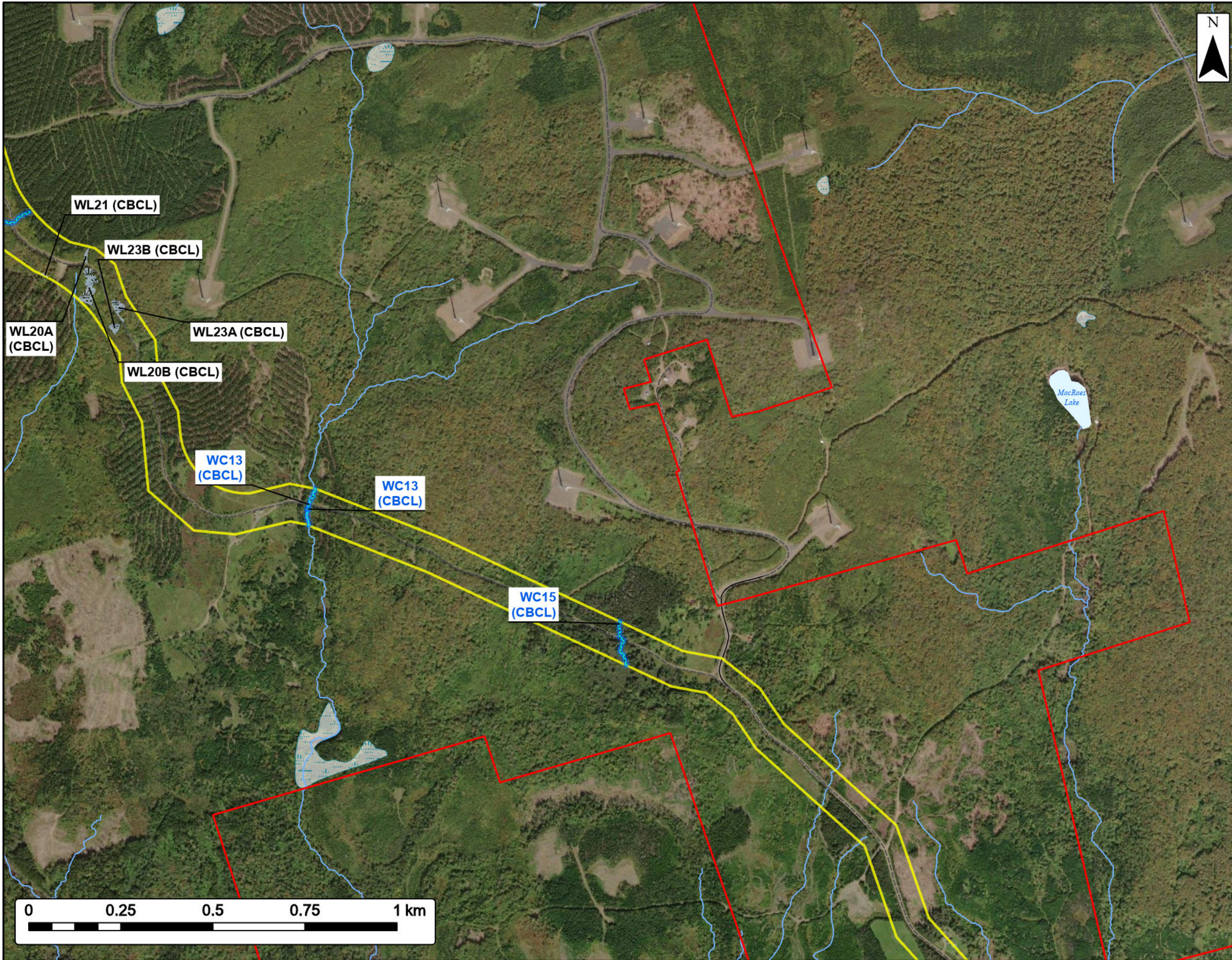


Study Area	
Assessment Area	
Proposed Turbine Location	
Field Assessed Watercourse (WC)	
Field Assessed Wetland (WL)	
<b>Transportation</b>	
Unpaved Road	
<b>Water Features</b>	
Mapped Stream	
Mapped Wet Area	



Coordinate System: NAD83 UTM Zone 20N		Sources: ESRI Basemaps, GeoNOVA, SNSIS, NRCan, NSNRR, ACCDC, IBA Canada	
Date:	Oct 2023	Project #:	23-9127
Scale:	1:10,000	Drawing #:	<b>7.11C</b>
Drawn By:	K. Wallace		
Checked By:	M. Savelle		

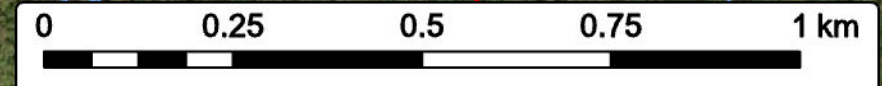
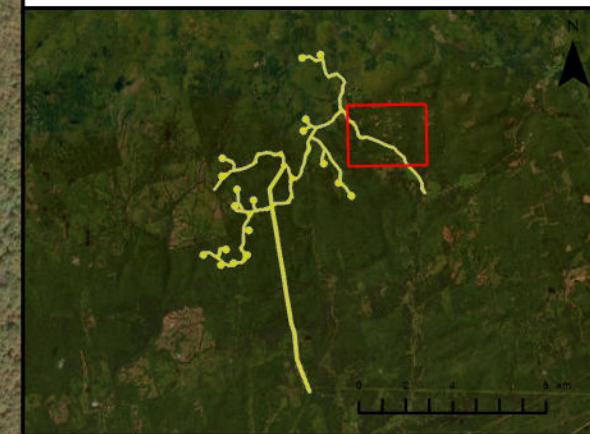




**KmtnuK Wind Power Project**  
Field Assessments



Study Area	
Assessment Area	
Field Assessed Watercourse (WC)	
Field Assessed Wetland (WL)	
<b>Transportation</b>	
Road	
Unpaved Road	
<b>Water Features</b>	
Mapped Stream	
Mapped Lakes and Rivers	
Mapped Wet Area	



Coordinate System: NAD83 UTM Zone 20N Sources: ESRI Basemaps, GeoNOVA, SNSIS, NRCan, NSNRR, ACCDC, IBA Canada

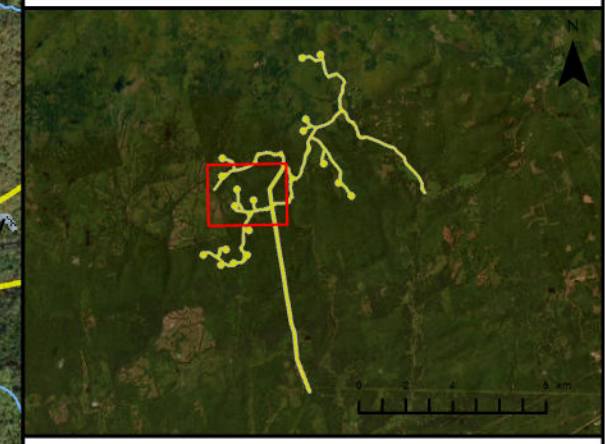
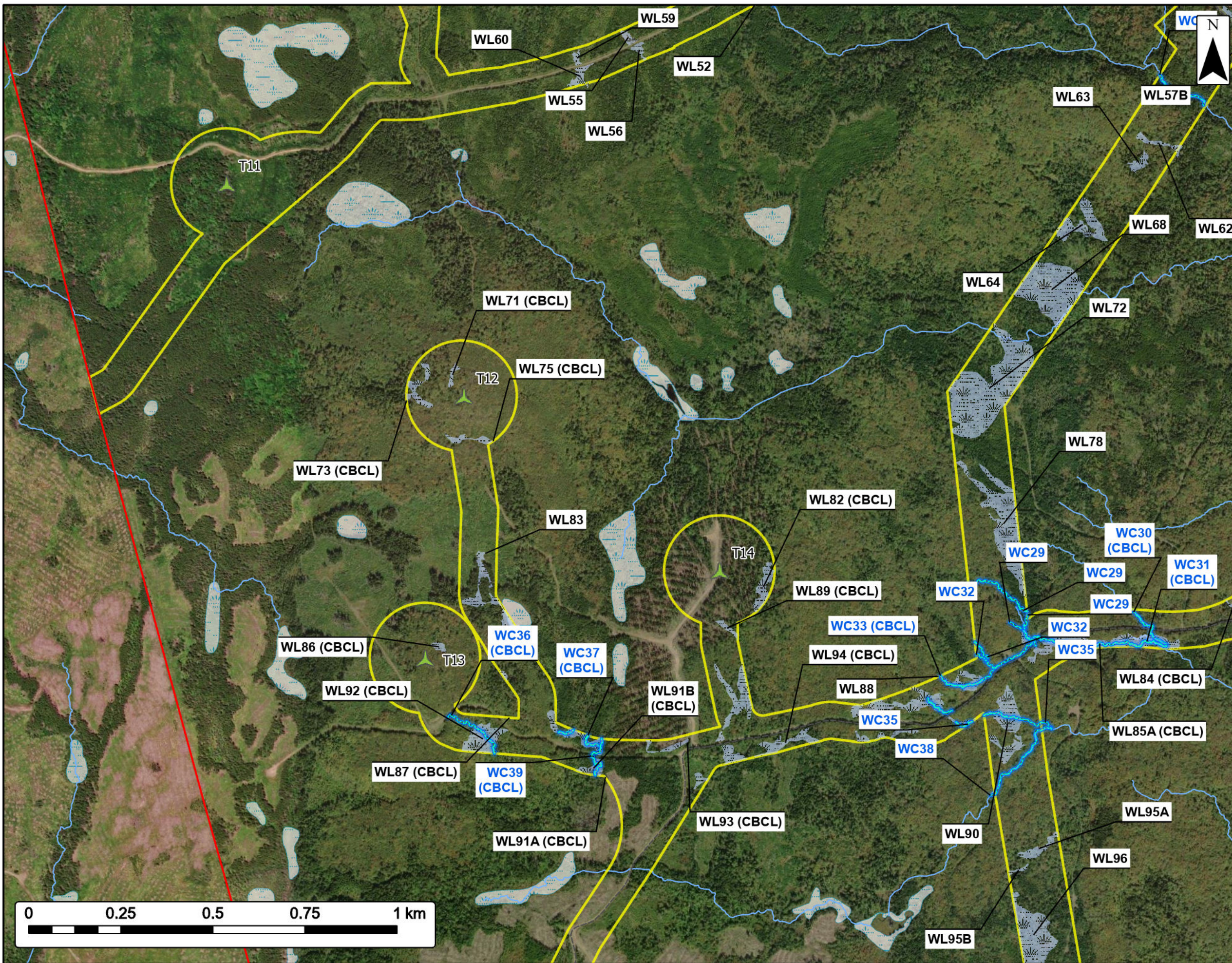
Date:	Oct 2023	Project #:	23-9127
Scale:	1:10,000	Drawing #:	<b>7.11D</b>
Drawn By:	K. Wallace		
Checked By:	M. Savelle		



**KmtnuK Wind Power Project**  
Field Assessments



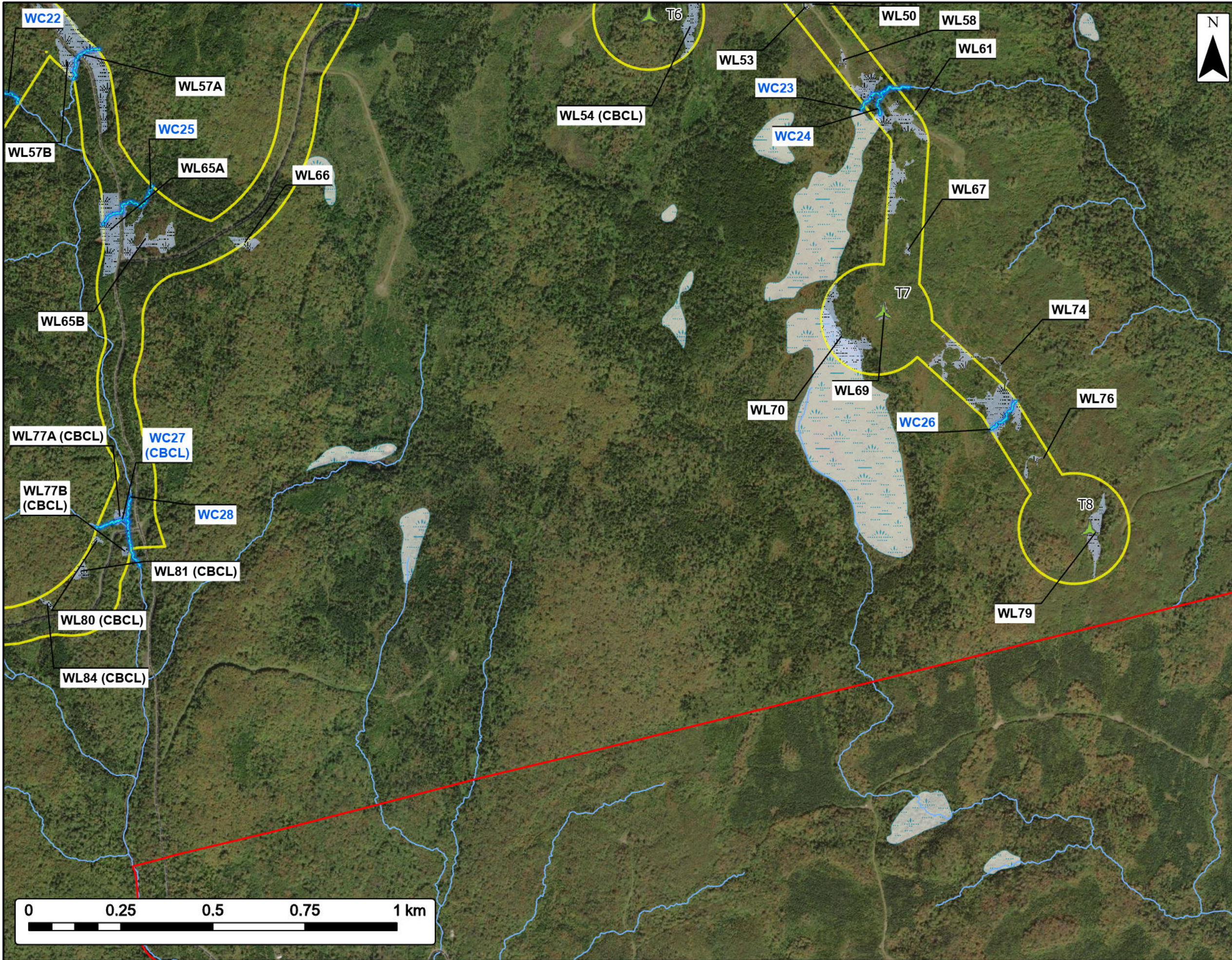
Study Area	
Assessment Area	
Proposed Turbine Location	
Field Assessed Watercourse (WC)	
Field Assessed Wetland (WL)	
<b>Transportation</b>	
Unpaved Road	
<b>Water Features</b>	
Mapped Stream	
Mapped Wet Area	



Coordinate System: NAD83 UTM Zone 20N Sources: ESRI Basemaps, GeoNOVA, SNSIS, NRCan, NSNRR, ACCDC, IBA Canada

Date:	Oct 2023	Project #:	23-9127
Scale:	1:10,000	Drawing #:	<b>7.11E</b>
Drawn By:	K. Wallace		
Checked By:	M. Savelle		

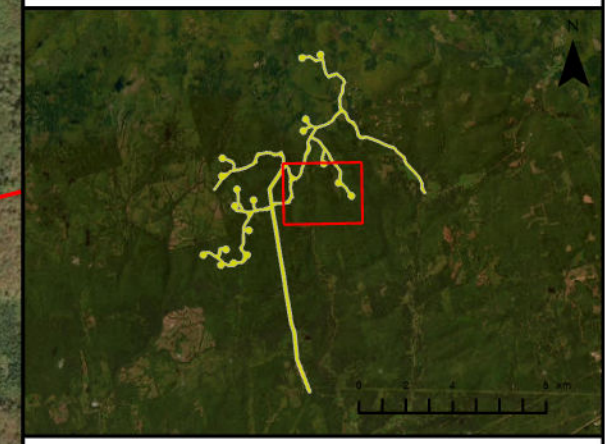




**KmtnuK Wind Power Project**  
Field Assessments



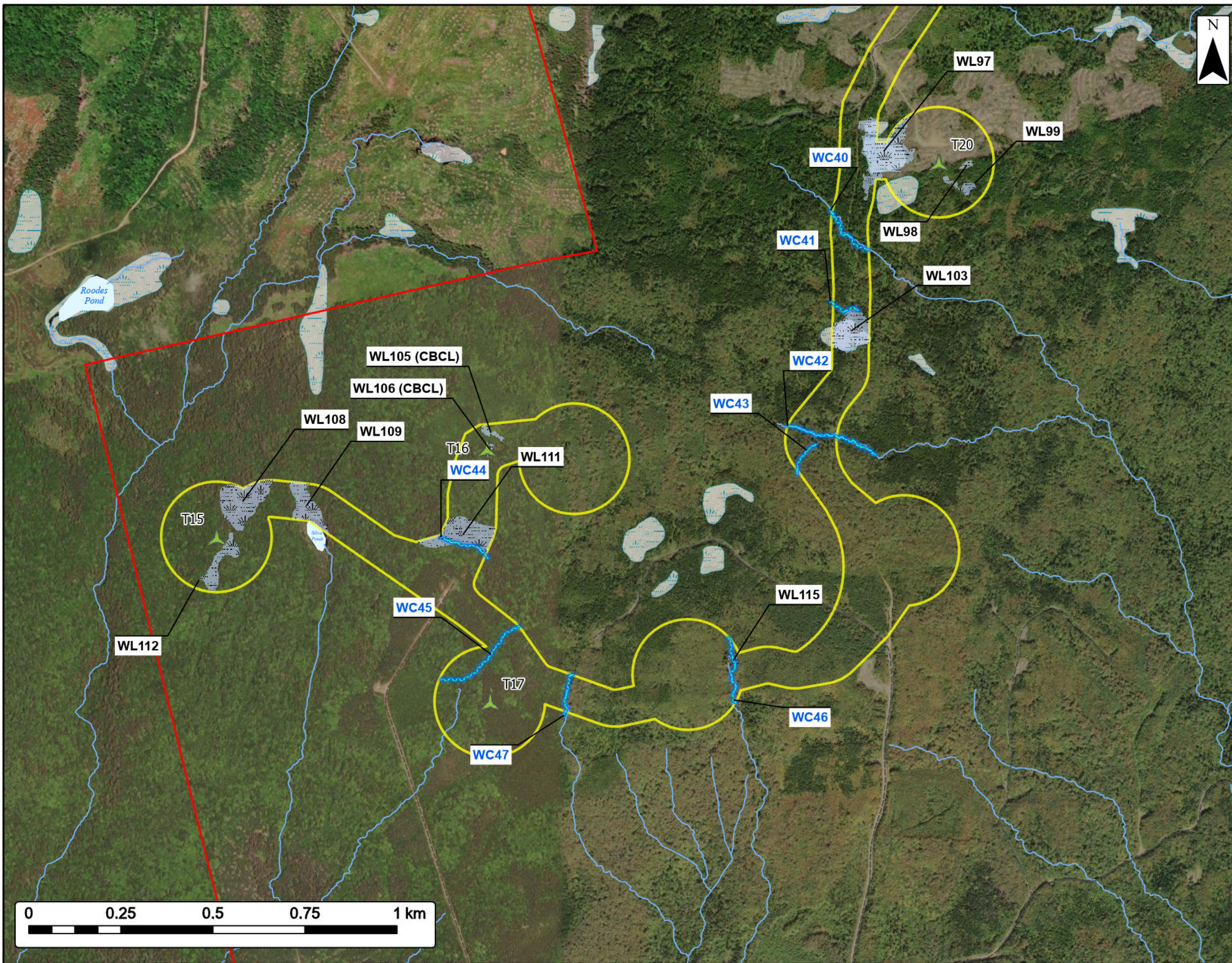
Study Area	
Assessment Area	
Proposed Turbine Location	
Field Assessed Watercourse (WC)	
Field Assessed Wetland (WL)	
<b>Transportation</b>	
Road	
Unpaved Road	
<b>Water Features</b>	
Mapped Stream	
Mapped Wet Area	



Coordinate System: NAD83 UTM Zone 20N Sources: ESRI Basemaps, GeoNOVA, SNSIS, NRCan, NSNRR, ACCDC, IBA Canada

Date:	Oct 2023	Project #:	23-9127
Scale:	1:10,000	Drawing #:	<b>7.11F</b>
Drawn By:	K. Wallace		
Checked By:	M. Savelle		

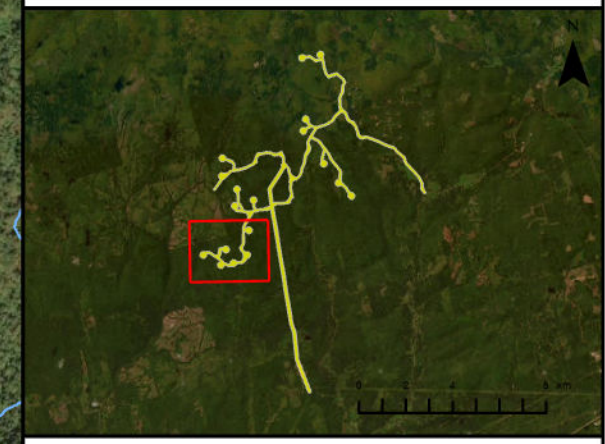




**Kmtnuuk Wind Power Project**  
Field Assessments



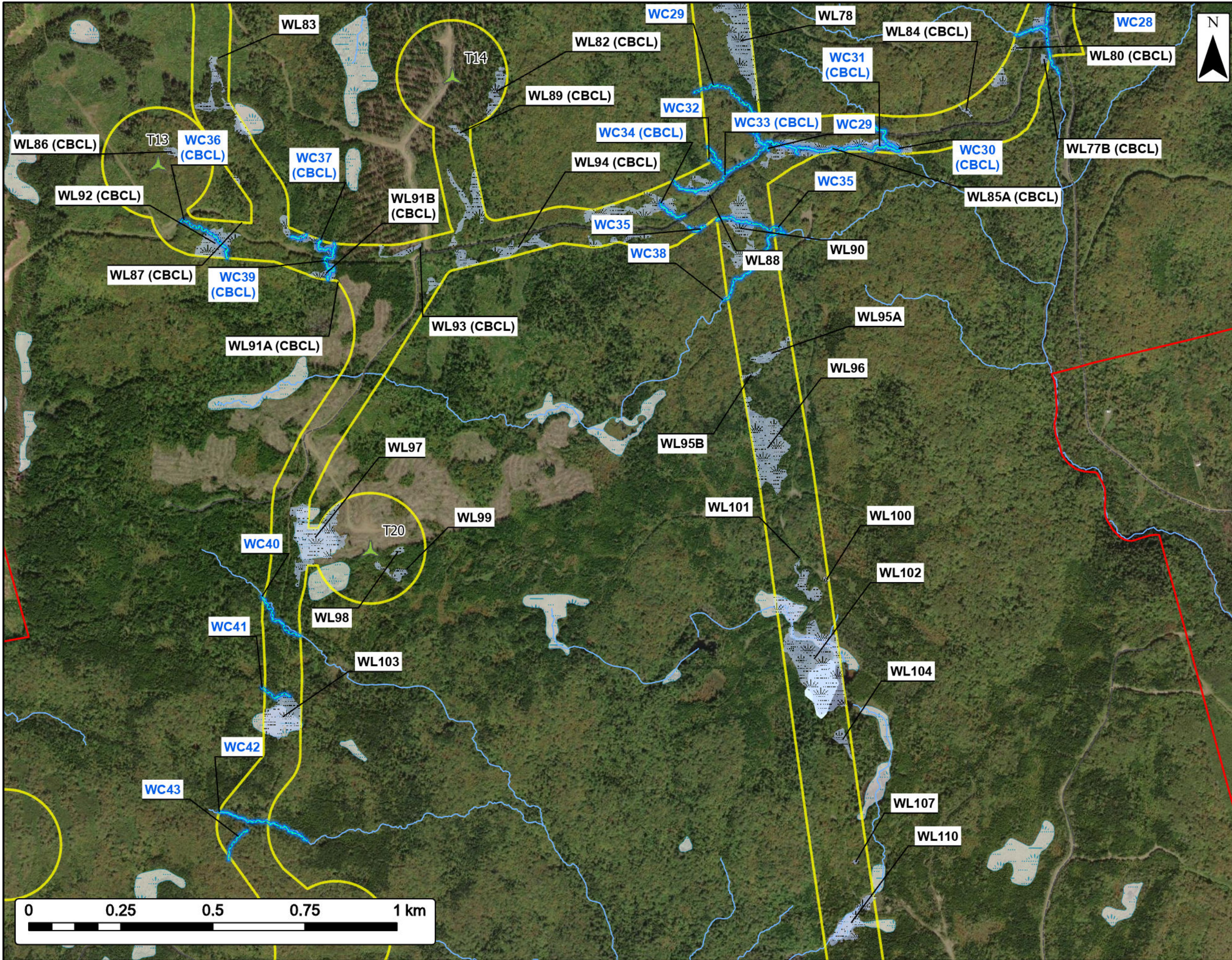
Study Area	
Assessment Area	
Proposed Turbine Location	
Field Assessed Watercourse (WC)	
Field Assessed Wetland (WL)	
<b>Transportation</b>	
Unpaved Road	
<b>Water Features</b>	
Mapped Stream	
Mapped Indefinite Stream	
Mapped Lakes and Rivers	
Mapped Wet Area	



Coordinate System: NAD83 UTM Zone 20N Sources: ESRI Basemaps, GeoNOVA, SNSIS, NRCan, NSNRR, ACCDC, IBA Canada

Date:	Oct 2023	Project #:	23-9127
Scale:	1:10,000	Drawing #:	<b>7.11G</b>
Drawn By:	K. Wallace		
Checked By:	M. Savelle		

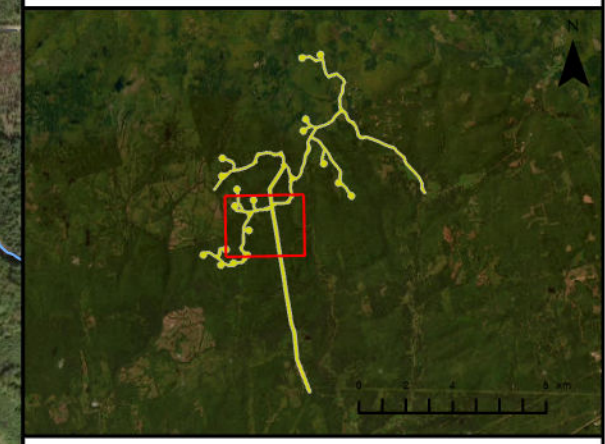




**KmtnuK Wind Power Project**  
Field Assessments



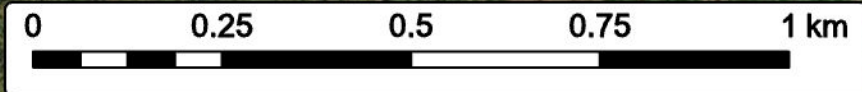
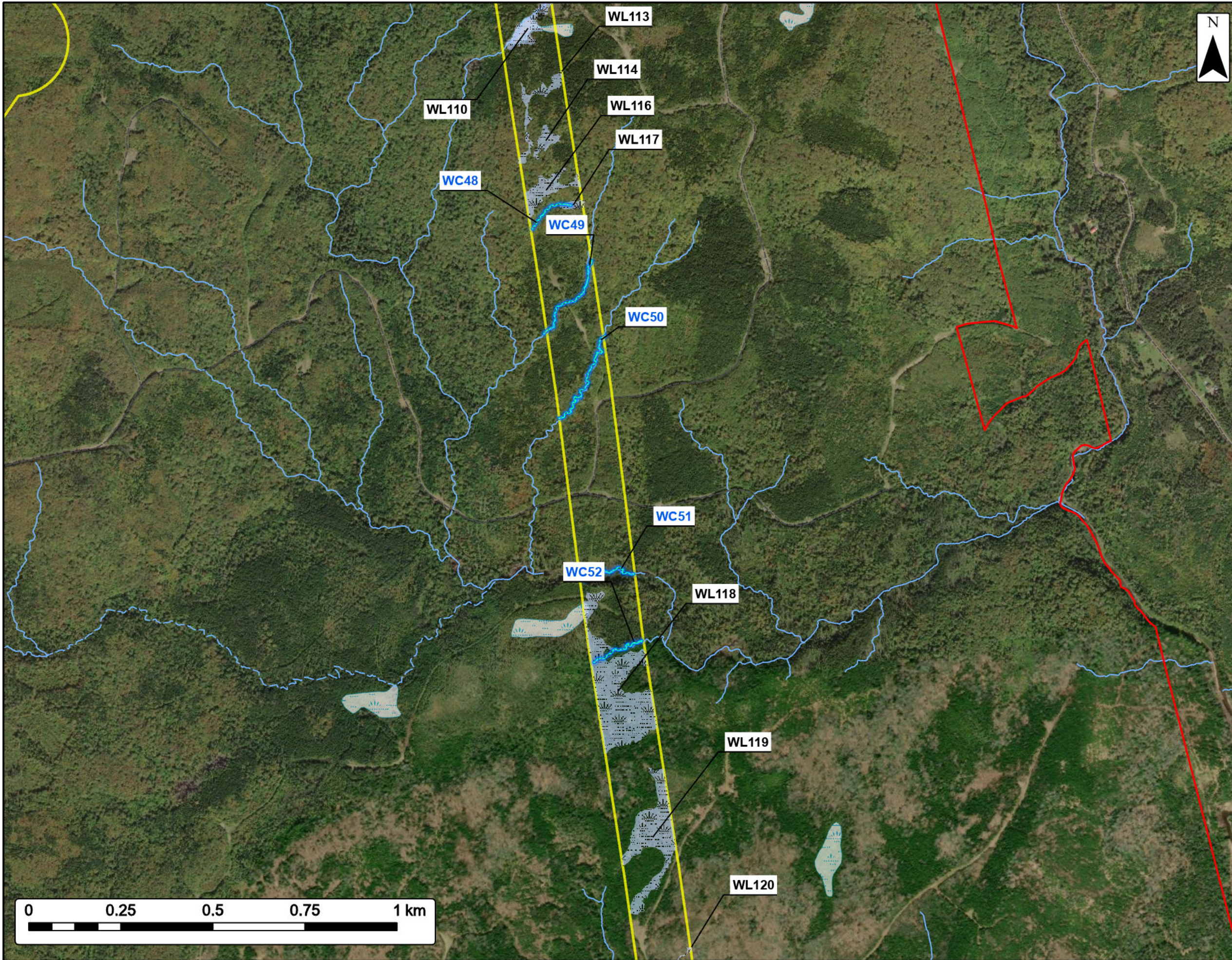
Study Area	
Assessment Area	
Proposed Turbine Location	
Field Assessed Watercourse (WC)	
Field Assessed Wetland (WL)	
<b>Transportation</b>	
Road	
Unpaved Road	
<b>Water Features</b>	
Mapped Stream	
Mapped Lakes and Rivers	
Mapped Wet Area	



Coordinate System: NAD83 UTM Zone 20N Sources: ESRI Basemaps, GeoNOVA, SNSIS, NRCan, NSNRR, ACCDC, IBA Canada

Date: Oct 2023	Project #: 23-9127
Scale: 1:10,000	Drawing #: <b>7.11H</b>
Drawn By: K. Wallace	
Checked By: M. Savelle	

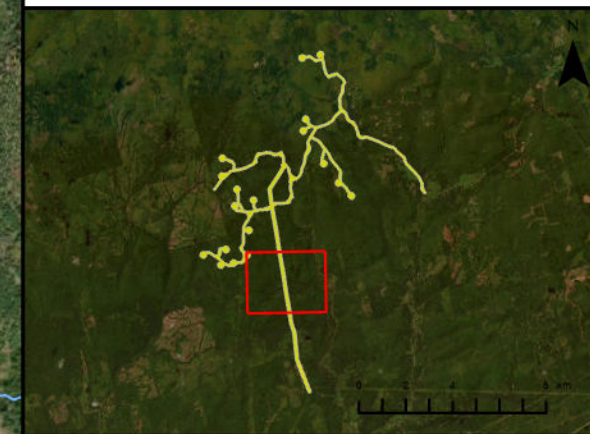




**Kmtnuuk Wind Power Project**  
Field Assessments



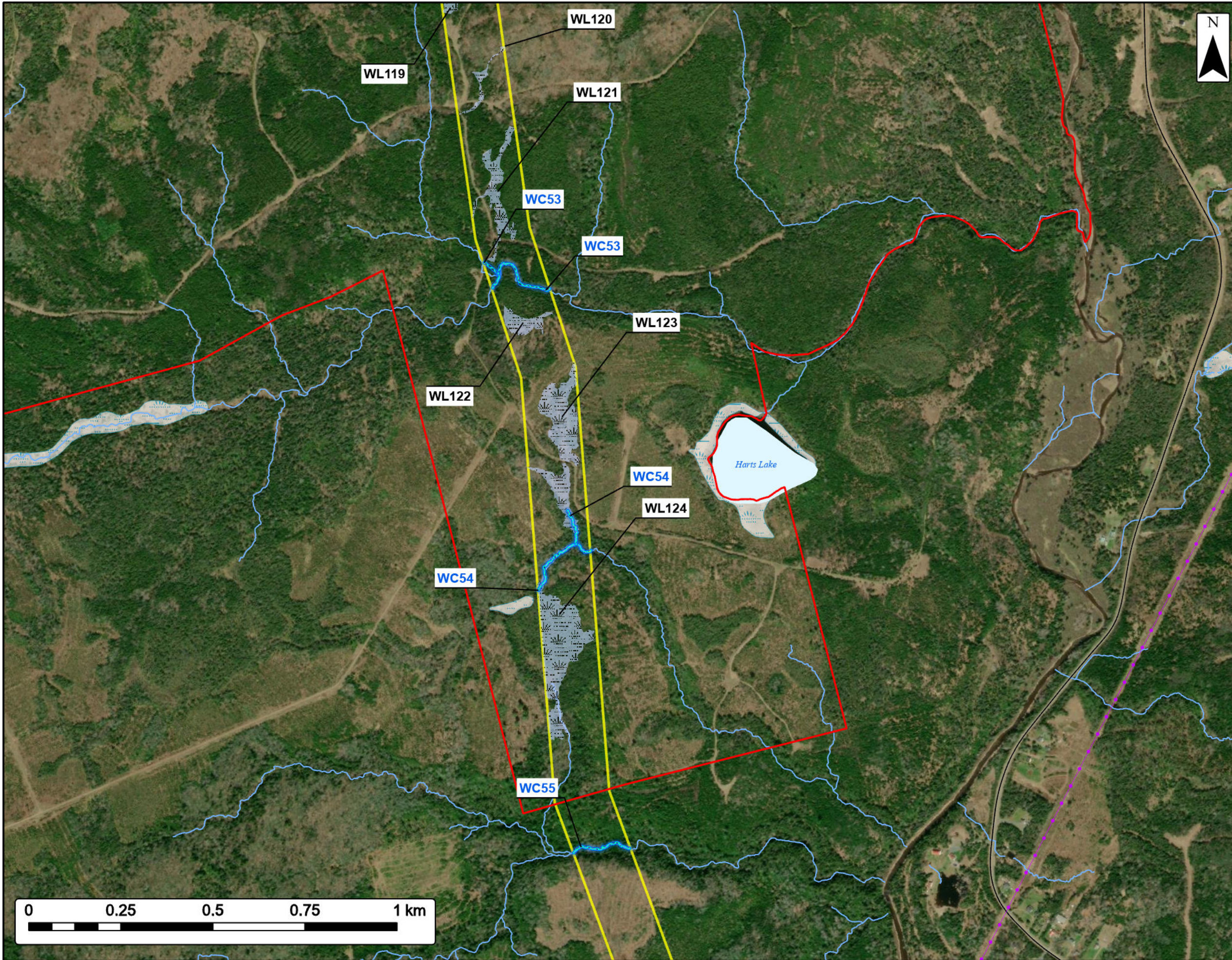
Study Area	
Assessment Area	
Field Assessed Watercourse (WC)	
Field Assessed Wetland (WL)	
<b>Transportation</b>	
Road	
Unpaved Road	
<b>Water Features</b>	
Mapped Stream	
Mapped Indefinite Stream	
Mapped Wet Area	



Coordinate System: NAD83 UTM Zone 20N Sources: ESRI Basemaps, GeoNOVA, SNSIS, NRCan, NSNRR, ACCDC, IBA Canada

Date:	Oct 2023	Project #:	23-9127
Scale:	1:10,000	Drawing #:	<b>7.111</b>
Drawn By:	K. Wallace		
Checked By:	M. Savelle		

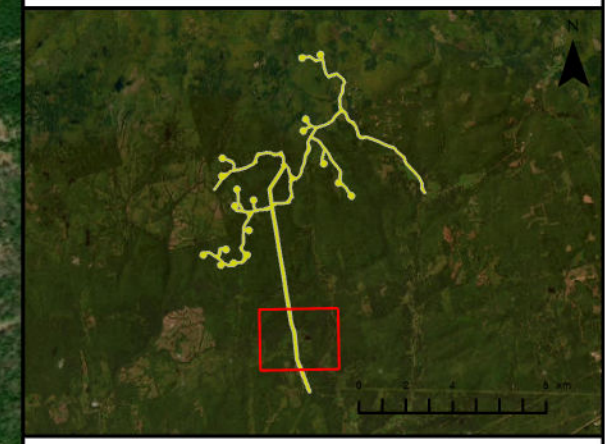




**Kmtnuuk Wind Power Project**  
Field Assessments



Study Area	
Assessment Area	
Field Assessed Watercourse (WC)	
Field Assessed Wetland (WL)	
<b>Utilities (Line)</b>	
Existing Transmission Lines	
<b>Transportation</b>	
Road	
<b>Water Features</b>	
Mapped Stream	
Mapped Indefinite Stream	
Mapped Lakes and Rivers	
Mapped Wet Area	

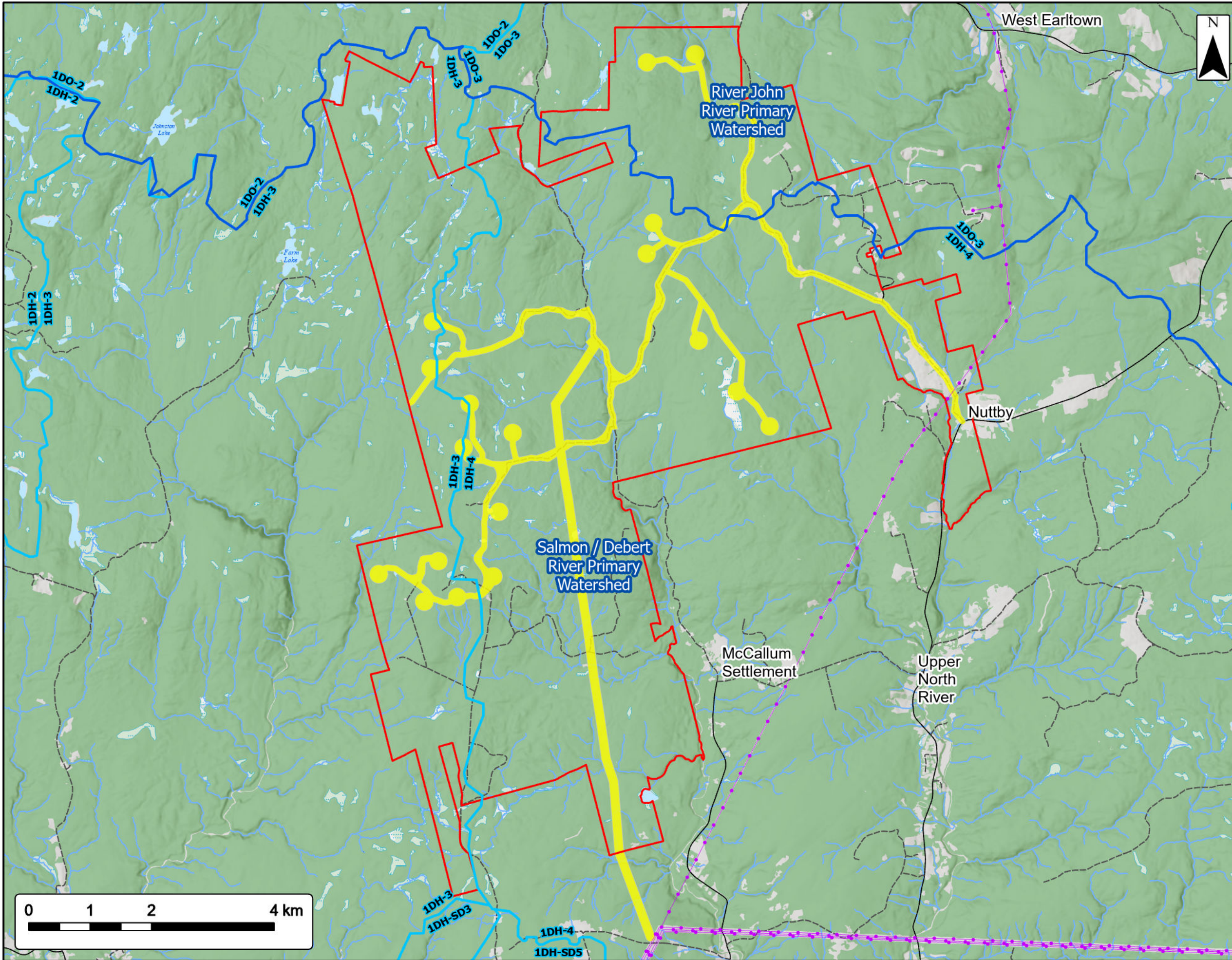


Coordinate System: NAD83 UTM Zone 20N Sources: ESRI Basemaps, GeoNOVA, SNSIS, NRCan, NSNRR, ACCDC, IBA Canada

Date:	Oct 2023	Project #:	23-9127
Scale:	1:10,000	Drawing #:	<b>7.11J</b>
Drawn By:	K. Wallace		
Checked By:	M. Savelle		







# KmtnuK Wind Power Project

## Watersheds



Study Area	
Assessment Area	
Primary Watershed Boundary	
Secondary Watershed Boundary	
<b>Utilities (line)</b>	
Existing Transmission Lines	
<b>Transportation</b>	
Road	
Unpaved Road	
<b>Water Features</b>	
Mapped Stream	
Mapped Indefinite Stream	
Mapped Lakes and Rivers	
Mapped Wet Area	



Coordinate System: NAD83 UTM Zone 20N Sources: ESRI Basemaps, GeoNOVA, SNSIS, NRCan, NSNRR, ACCDC, IBA Canada

Date:	Oct 2023	Project #:	23-9127
Scale:	1:60,000	Drawing #:	<b>7.12</b>
Drawn By:	K. Wallace		
Checked By:	M. Savelle		

