



# Kmt nuk Wind Power Project








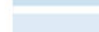


## Wet Area Mapping




**Study Area** 

**Assessment Area** 


**Depth to Water (cm)**


- 0 - 10 
- 10 - 20 
- 20 - 30 
- 30 - 40 
- 40 - 50 
- 50 - 60 
- 60 - 70 
- 70 - 80 
- 80 - 90 
- 90 - 100 

**Utilities (line)**

Existing Transmission Lines 

**Transportation**

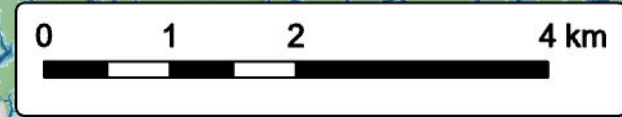
Road 

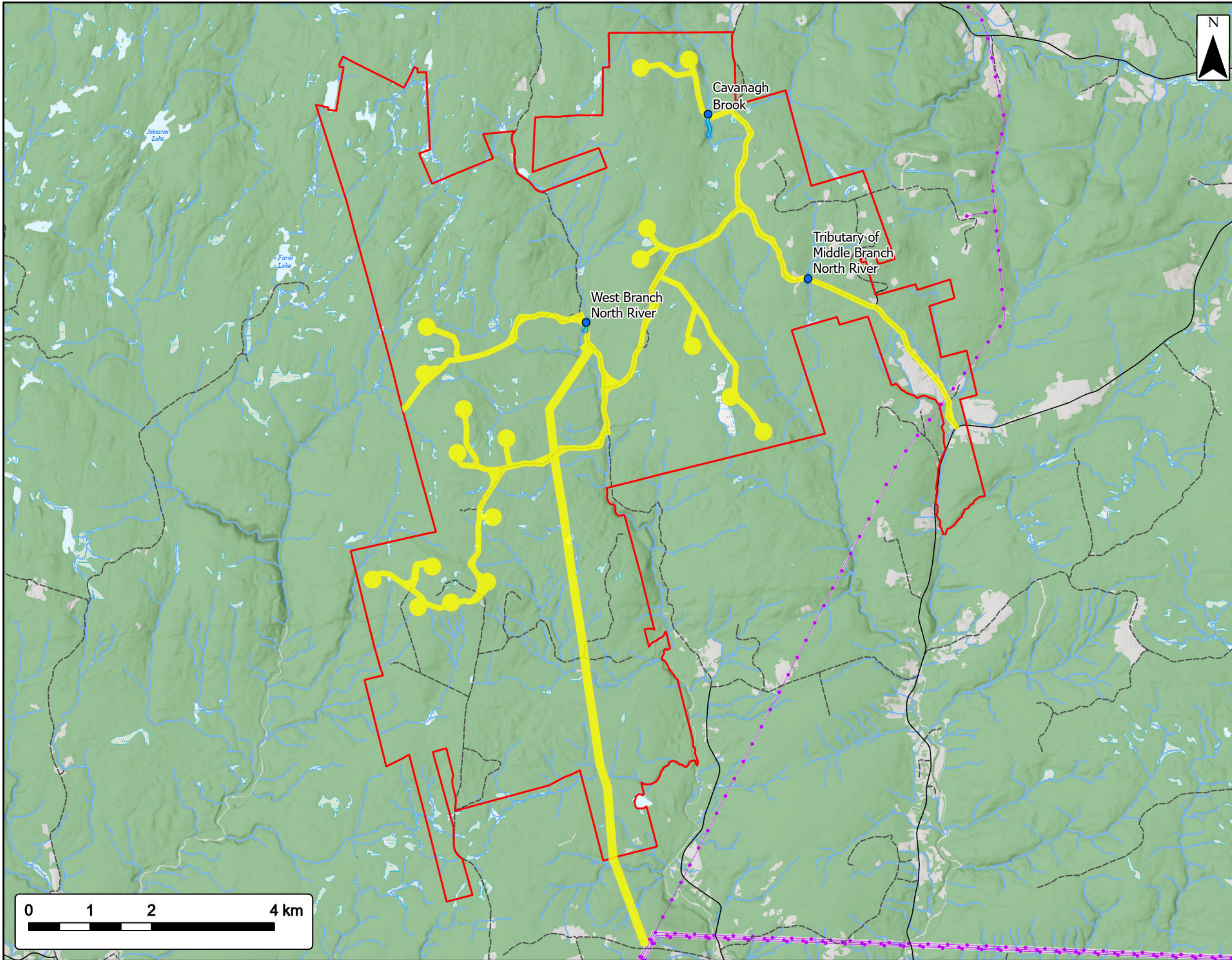
Unpaved Road 



Coordinate System: NAD83 UTM Zone 20N Sources: Esri Basemaps, GeoNOVA, SNSIS, NRCan, NSNRR, ACCDC, IBA Canada

Date:	Oct 2023	Project #:	23-9127
Scale:	1:60,000	Drawing #:	<b>7.13</b>
Drawn By:	K. Wallace		
Checked By:	M. Savelle		





# Kmtnuik Wind Power Project

Fish Habitat



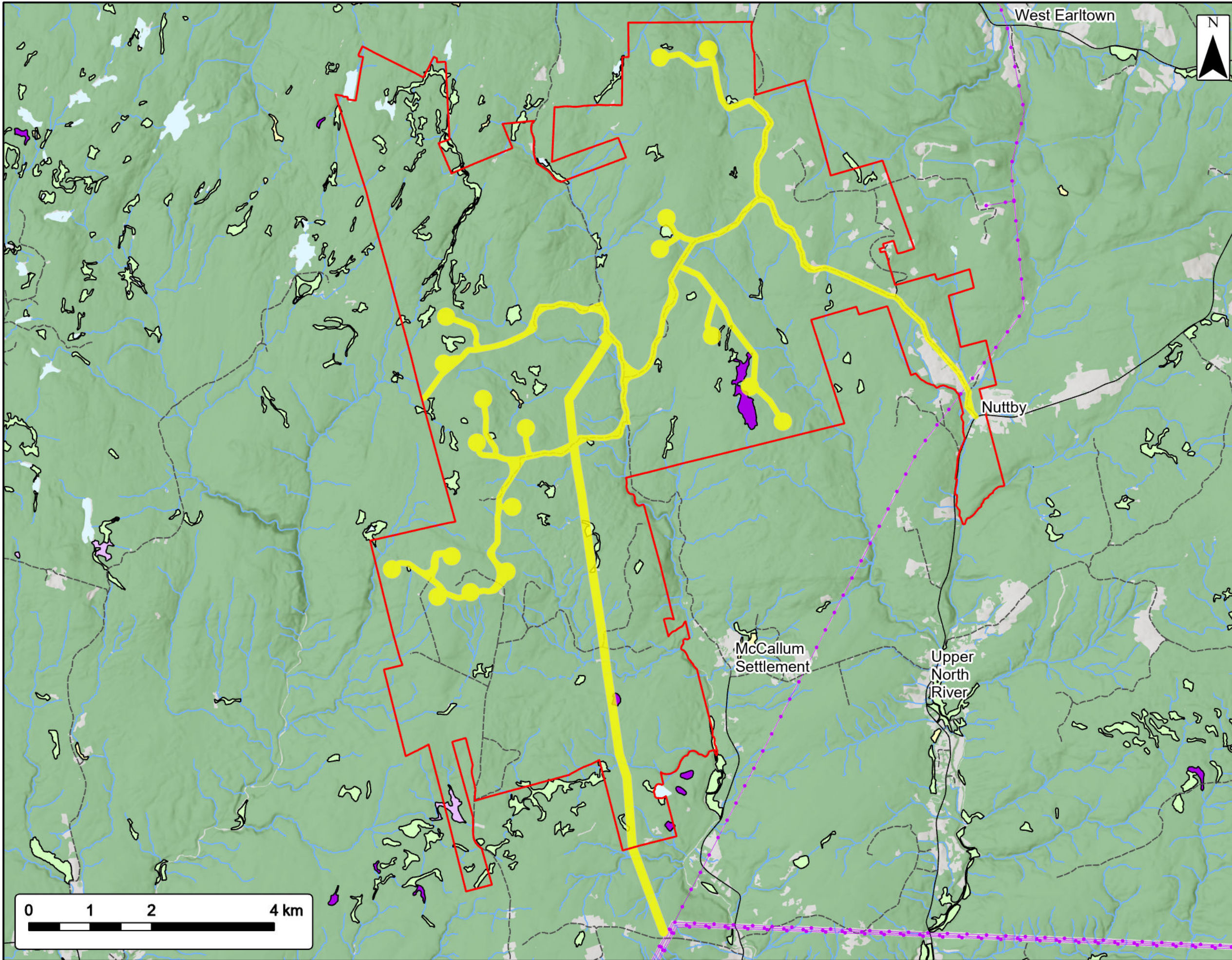
Study Area	
Assessment Area	
Electrofished Pt. Locations	
Field Assessed Watercourse	
<b>Transportation</b>	
Road	
Unpaved Road	
<b>Utilities (line)</b>	
Existing Transmission Lines	
<b>Water Features</b>	
Mapped Stream	
Mapped Indefinite Stream	
Mapped Lakes and Rivers	
Mapped Wet Area	



Coordinate System: NAD83 UTM Zone 20N Sources: ESRI Basemaps, GeoNOVA, SNSIS, NRCan, NSNRR, ACCDC, IBA Canada

Date:	Oct 2023	Project #:	23-9127
Scale:	1:60,000	Drawing #:	<b>7.14</b>
Drawn By:	K. Wallace		
Checked By:	M. Savelle		





# Kmtnuik Wind Power Project

NSNRR Wetlands



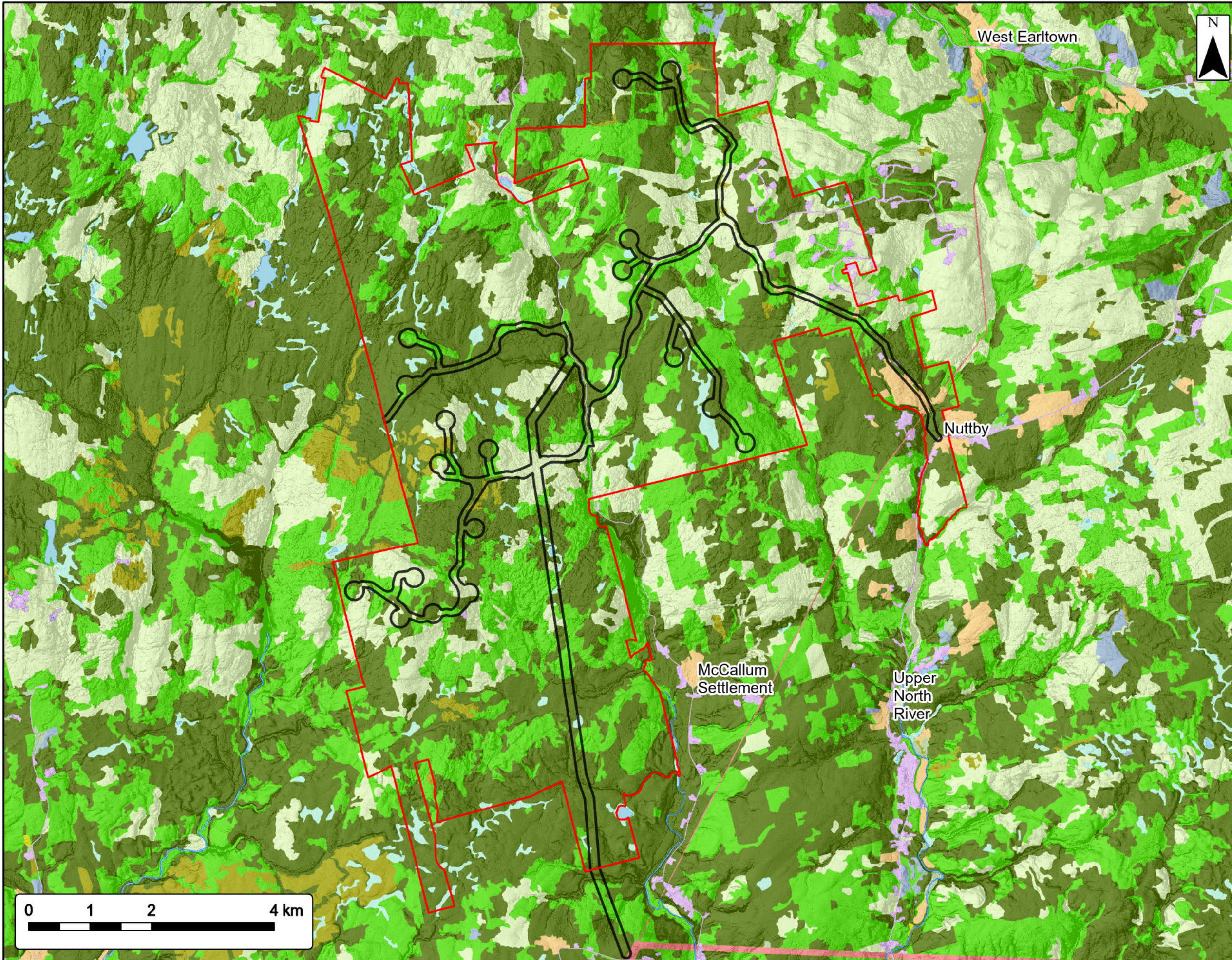
Study Area	
Assessment Area	
<b>NSNRR Wetland Inventory</b>	
Bog or Fen	
Fen	
Marsh	
Swamp	
<b>Transportation</b>	
Road	
Unpaved Road	
<b>Utilities (line)</b>	
Existing Transmission Lines	
<b>Water Features</b>	
Mapped Stream	
Mapped Indefinite Stream	
Mapped Lakes and Rivers	



Coordinate System: NAD83 UTM Zone 20N Sources: ESRI Basemaps, GeoNOVA, SNSIS, NRCan, NSNRR, ACCDC, IBA Canada

Date:	Oct 2023	Project #:	23-9127
Scale:	1:60,000	Drawing #:	<b>7.15</b>
Drawn By:	K. Wallace		
Checked By:	M. Savelle		





# KmtnuK Wind Power Project

## Land Cover



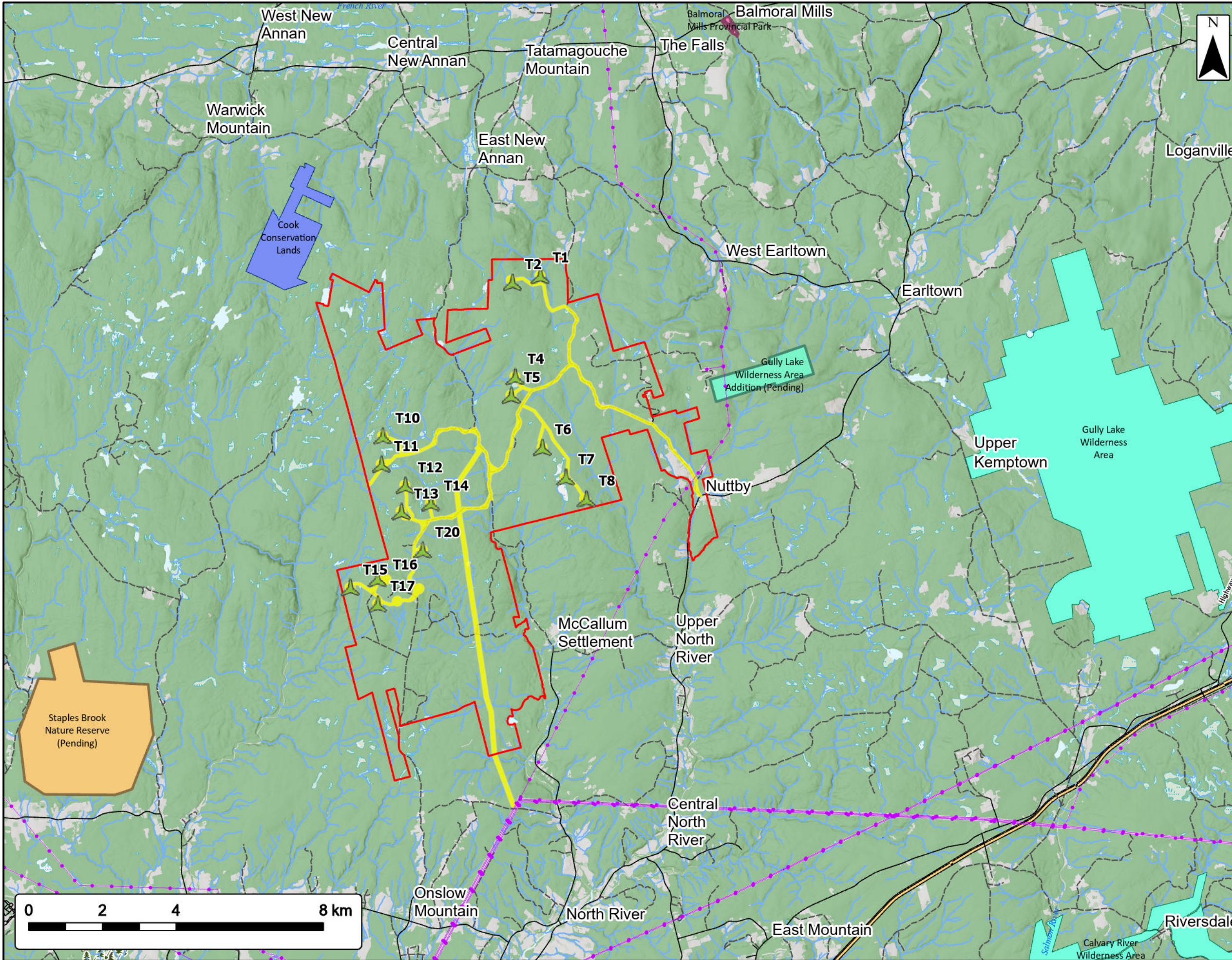
Study Area	
Assessment Area	
<b>Land Cover</b>	
Agriculture	
Blueberries or Barren	
Bogs or Wetlands	
Brush	
Hardwood	
Harvests	
Mixedwood	
Old Field	
Softwood	
Urban, Landfill, Quarry, Transport Corridor	
Utility Corridor	
Water	



Coordinate System: NAD83 UTM Zone 20N  
 Sources: ESRI Basemaps, GeoNOVA, SNSIS, NRCan, NSNRR, ACCDC, IBA Canada

Date:	Oct 2023	Project #:	23-9127
Scale:	1:60,000	Drawing #:	<b>7.16</b>
Drawn By:	K. Wallace		
Checked By:	M. Savelle		





# Kmt nuk Wind Power Project

Protected Areas

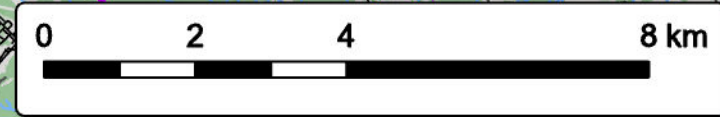


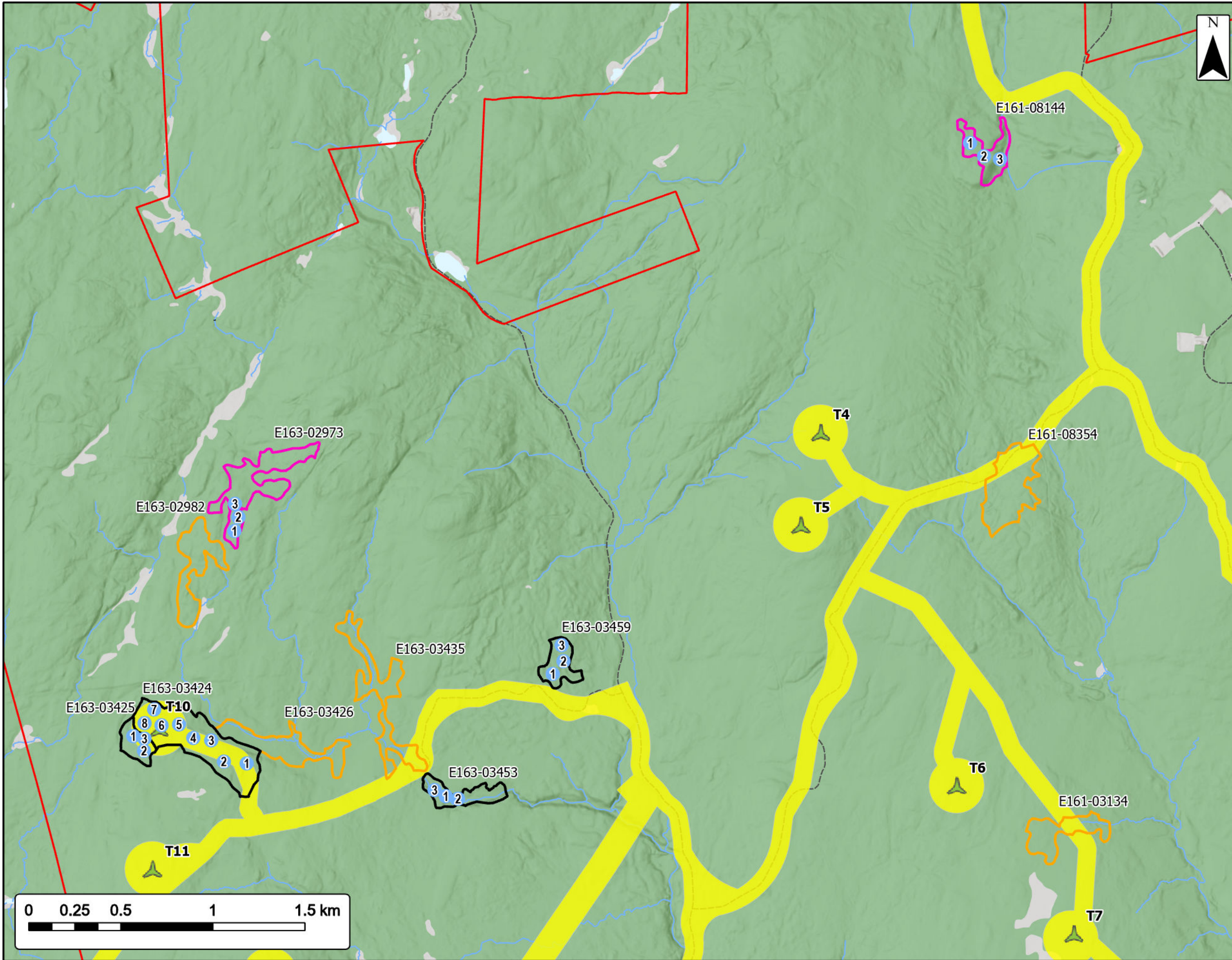
Study Area	
Assessment Area	
Proposed Turbine Location	
<b>Type of Pending or Proposed Protection</b>	
Nature Reserve	
Wilderness Area	
Provincial Park	
<b>Type of Existing Protection</b>	
Wilderness Area	
Land Trust or Conservation Easement	
<b>Utilities (line)</b>	
Existing Transmission Lines	
<b>Transportation</b>	
Trans-Canada Highway	
Road	
Unpaved Road	
<b>Water Features</b>	
Mapped Stream	
Mapped Indefinite Stream	
Mapped Lakes and Rivers	
Mapped Wet Area	



Coordinate System: NAD83 UTM Zone 20N Sources: Esri Basemaps, GeoNOVA, SNSIS, NRCAN, NSNRR, ACCDC, IBA Canada

Date:	Oct 2023	Project #:	23-9127
Scale:	1:100,000	Drawing #:	<b>7.17</b>
Drawn By:	K. Wallace		
Checked By:	M. Savelle		



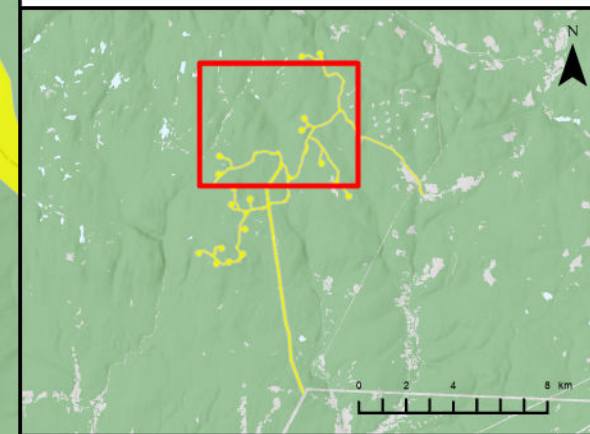


# KmtnuK Wind Power Project

Old Growth



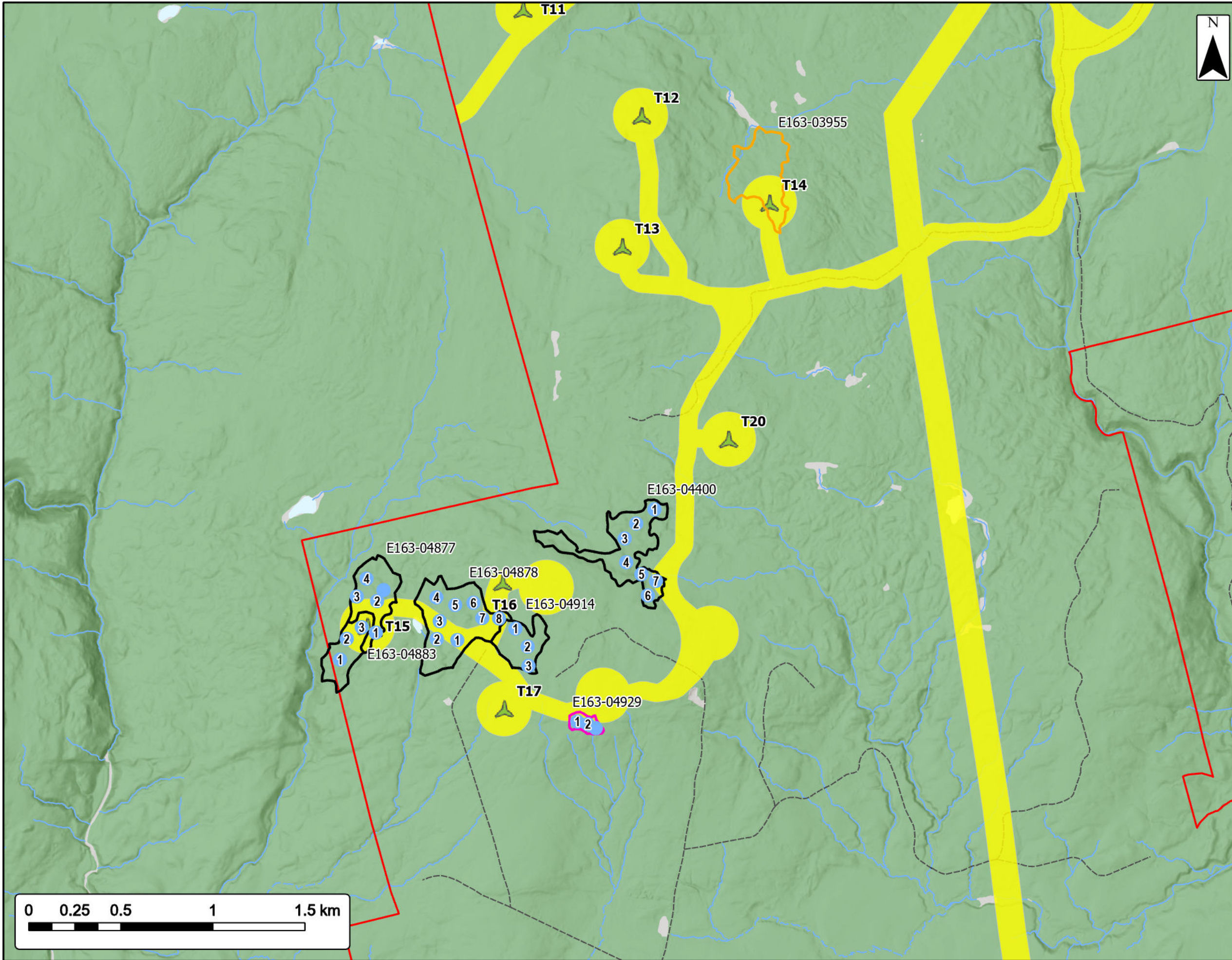
Study Area	
Assessment Area	
Proposed Turbine Location	
Plot Location	
Field Confirmed Old Growth	
Field Confirmed Not Old Growth	
Blowdown Area (Not Old Growth)	
<b>Transportation</b>	
Road	
Unpaved Road	
<b>Water Features</b>	
Mapped Stream	
Mapped Lakes and Rivers	



Coordinate System: NAD83 UTM Zone 20N  
 Sources: Esri Basemaps, GeoNOVA, SNSIS, NRCan, NSNRR, ACCDC, IBA Canada

Date:	Oct 2023	Project #:	23-9127
Scale:	1:20,000	Drawing #:	<b>7.18A</b>
Drawn By:	K. Wallace		
Checked By:	M. Savelle		



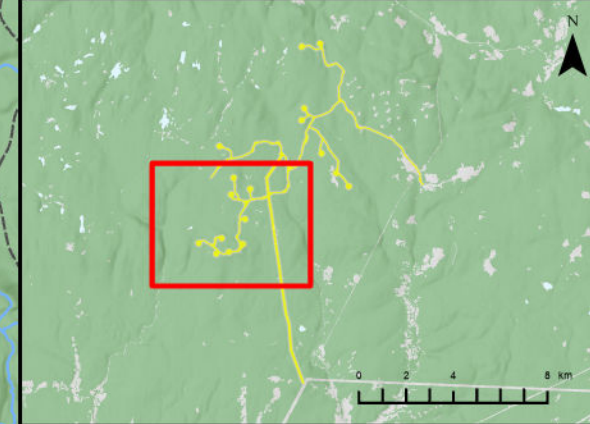


# Kmtnuuk Wind Power Project

Old Growth



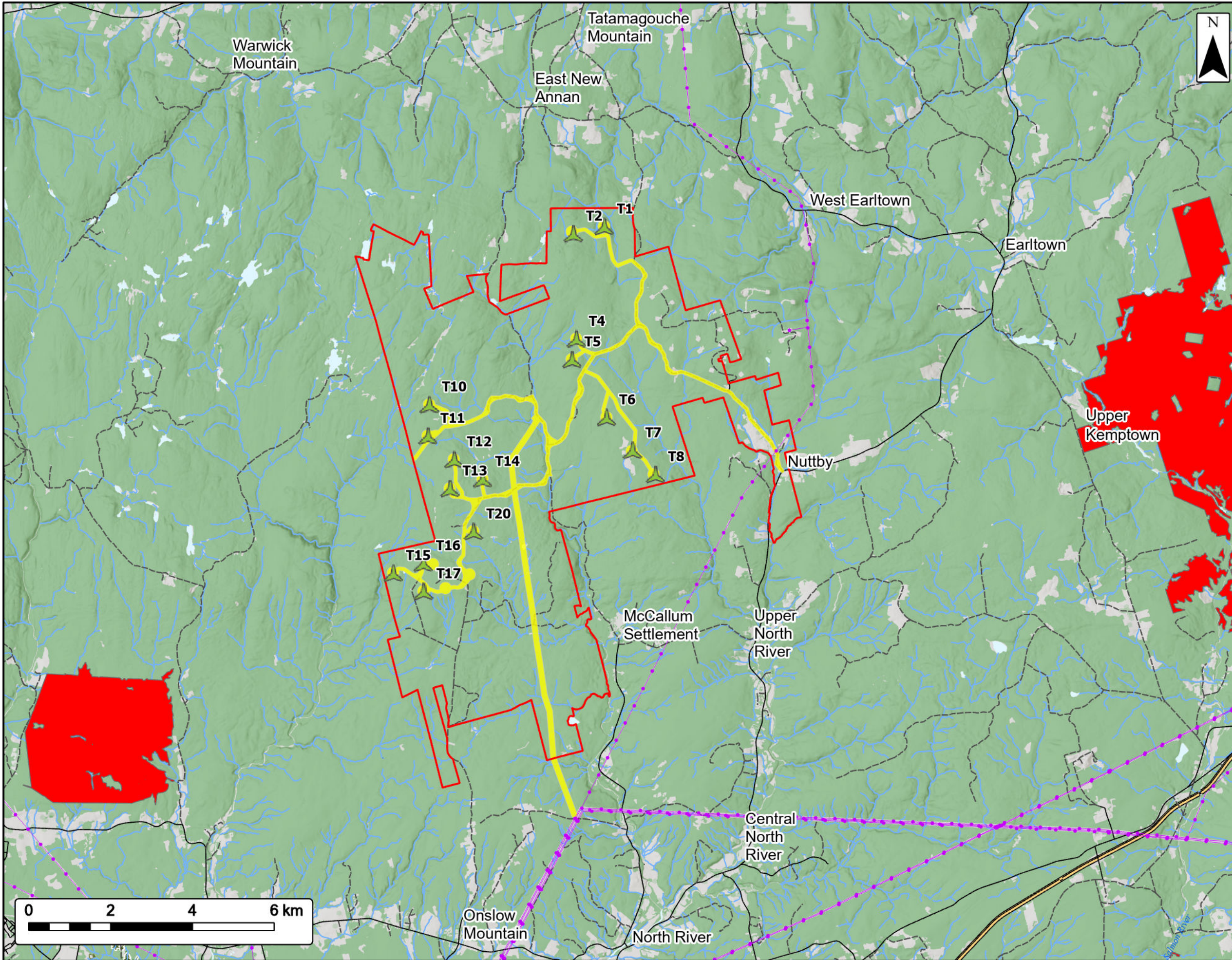
Study Area	
Assessment Area	
Proposed Turbine Location	
Plot Location	
Field Confirmed Old Growth	
Field Confirmed Not Old Growth	
Blowdown Area (Not Old Growth)	
<b>Transportation</b>	
Road	
Unpaved Road	
<b>Water Features</b>	
Mapped Stream	
Mapped Indefinite Stream	
Mapped Lakes and Rivers	



Coordinate System: NAD83 UTM Zone 20N  
 Sources: Esri Basemaps, GeoNOVA, SNSIS, NRCan, NSNRR, ACCDC, IBA Canada


Date:	Oct 2023	Project #:	23-9127
Scale:	1:20,000	Drawing #:	<b>7.18B</b>
Drawn By:	K. Wallace		
Checked By:	M. Savelle		

















### KmtnuK Wind Power Project


*Old Growth*



Study Area	
Assessment Area	
Proposed Turbine Location	
Old Growth Policy	
<b>Utilities (line)</b>	
Existing Pipeline	
Existing Transmission Lines	
<b>Transportation</b>	
Trans-Canada Highway	
Highway	
Road	
Unpaved Road	
<b>Water Features</b>	
Mapped Stream	
Mapped Indefinite Stream	
Mapped Lakes and Rivers	

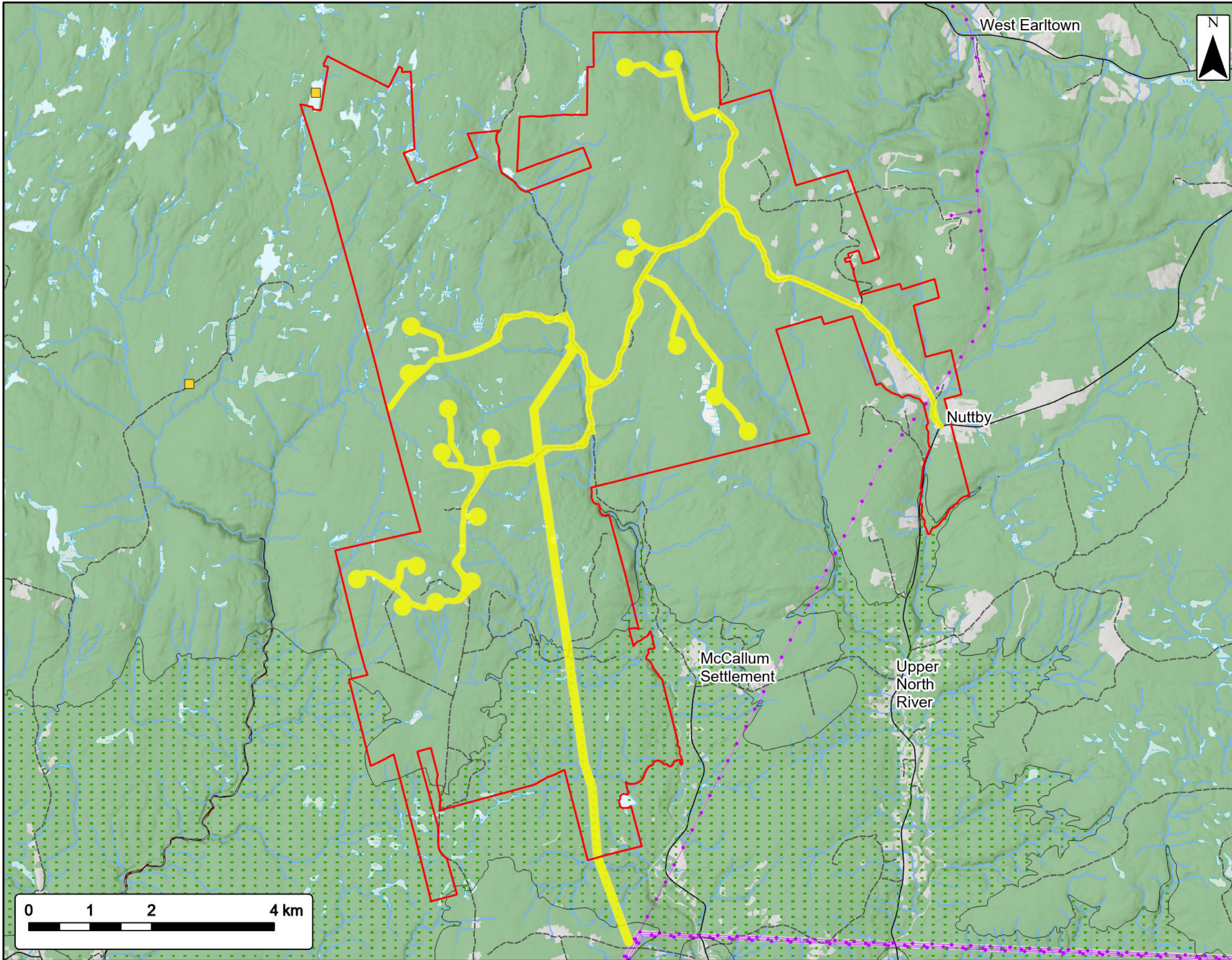


Coordinate System: NAD83 UTM Zone 20N		Sources: ESRI Basemaps, GeoNOVA, SNSIS, NRCan, NSNRR, ACCDC, IBA Canada	
Date:	Oct 2023	Project #:	23-9127
Scale:	1:90,000	Drawing #:	7.18C
Drawn By:	K. Wallace		
Checked By:	M. Savelle		









**Kmtnu Wind Power Project**  
*Invertebrate ACCDC Data and Significant Species/  
 Habitat*



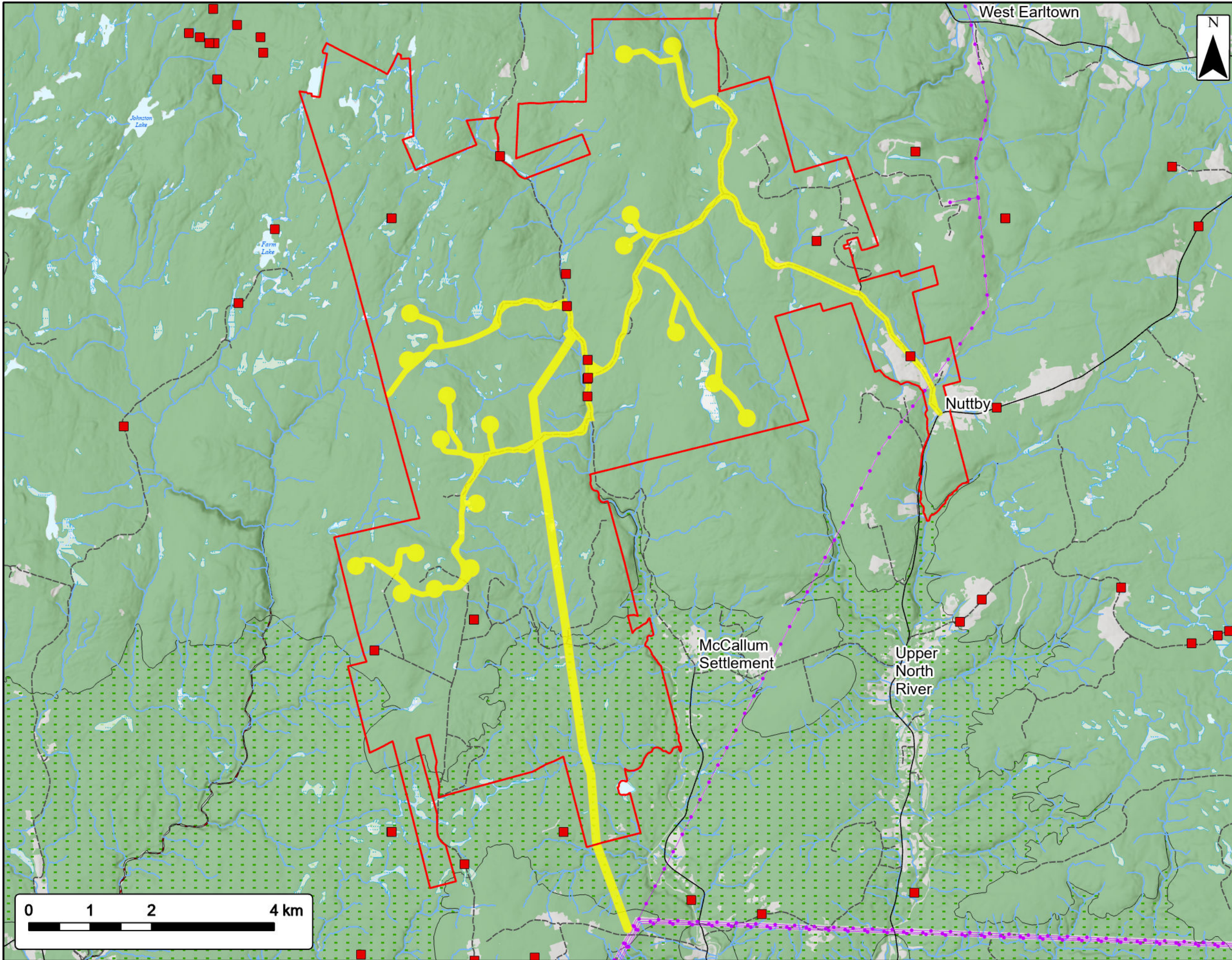
Study Area	
Assessment Area	
ACCDC Pt. Data	
Invertebrate Fauna	
<b>Significant Species &amp; Habitats (NSNRR)</b>	
Deer Wintering	
Species at Risk	
<b>Utilities (line)</b>	
Existing Transmission Lines	
<b>Transportation</b>	
Road	
Unpaved Road	
<b>Water Features</b>	
Mapped Stream	
Mapped Indefinite Stream	
Mapped Lakes and Rivers	
Mapped Wet Area	



Coordinate System: NAD83 UTM Zone 20N  
 Sources: Esri Basemaps, GeoNOVA, SNSIS, NRCan, NSNRR, ACCDC, IBA Canada

Date:	Oct 2023	Project #:	23-9127
Scale:	1:60,000	Drawing #:	<b>7.19A</b>
Drawn By:	K. Wallace		
Checked By:	M. Savelle		





**Kmt nuk Wind Power Project**  
Vertebrate ACCDC Data and Significant Species/  
Habitat



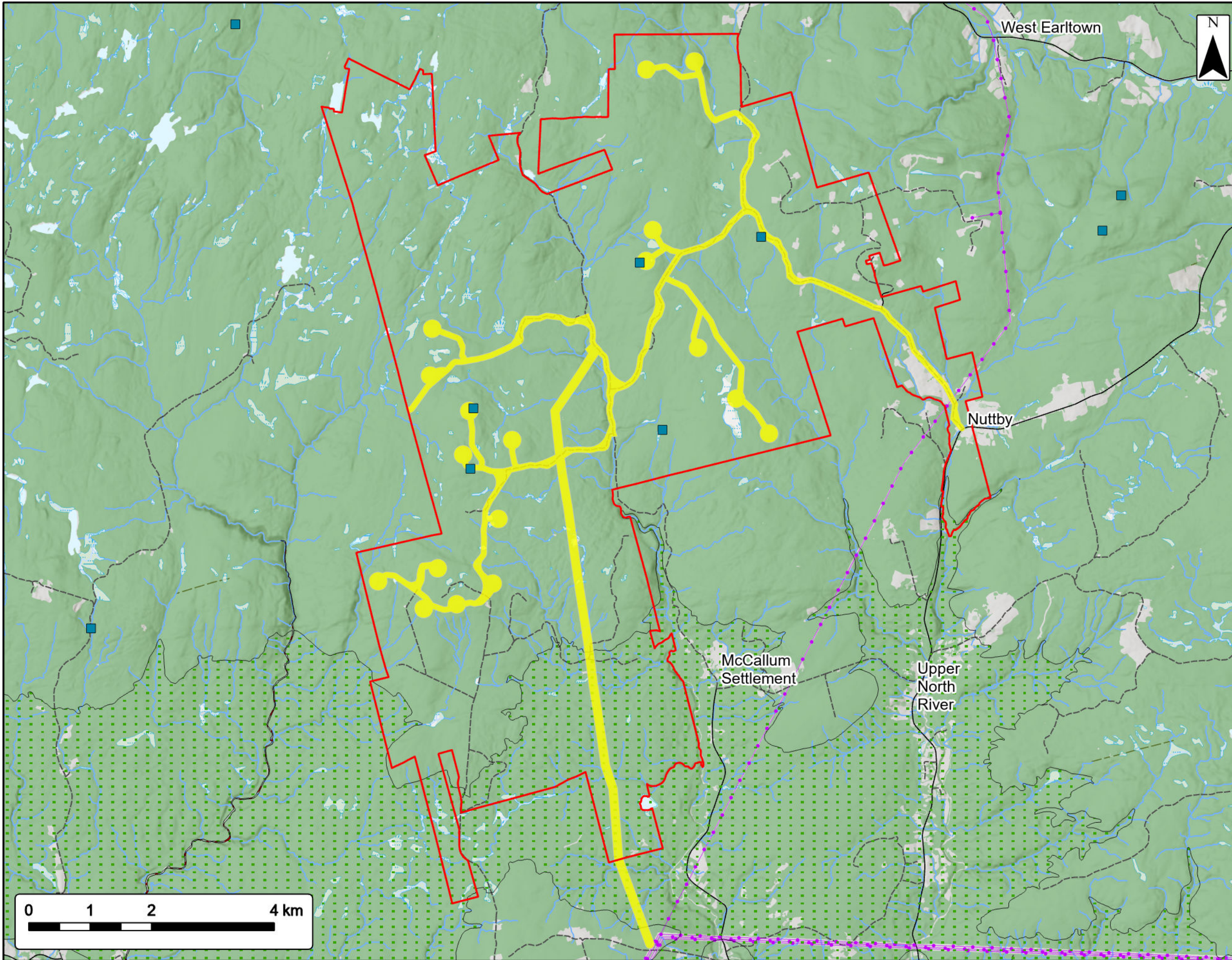
Study Area	
Assessment Area	
ACCDC Pt. Data	
Vertebrate Fauna	
<b>Significant Species &amp; Habitats (NSNRR)</b>	
Deer Wintering	
Species at Risk	
<b>Utilities (line)</b>	
Existing Transmission Lines	
<b>Transportation</b>	
Road	
Unpaved Road	
<b>Water Features</b>	
Mapped Stream	
Mapped Indefinite Stream	
Mapped Lakes and Rivers	
Mapped Wet Area	



Coordinate System: NAD83 UTM Zone 20N  
Sources: ESRI Basemaps, GeoNOVA, SNSIS, NRCan, NSNRR, ACCDC, IBA Canada

Date:	Oct 2023	Project #:	23-9127
Scale:	1:60,000	Drawing #:	<b>7.19B</b>
Drawn By:	K. Wallace		
Checked By:	M. Savelle		





**Kmtnu Wind Power Project**  
 Nonvascular ACCDC Data and Significant Species/  
 Habitat



Study Area	
Assessment Area	
ACCDC Pt. Data Nonvascular Flora	
<b>Significant Species &amp; Habitats (NSNRR)</b>	
Deer Wintering	
Species at Risk	
<b>Utilities (line)</b>	
Existing Transmission Lines	
<b>Transportation</b>	
Road	
Unpaved Road	
<b>Water Features</b>	
Mapped Stream	
Mapped Indefinite Stream	
Mapped Lakes and Rivers	
Mapped Wet Area	



Coordinate System: NAD83 UTM Zone 20N  
 Sources: Esri Basemaps, GeoNOVA, SNSIS, NRCan, NSNRR, ACCDC, IBA Canada

Date:	Oct 2023	Project #:	23-9127
Scale:	1:60,000	Drawing #:	<b>7.19C</b>
Drawn By:	K. Wallace		
Checked By:	M. Savelle		

