

# KmtnuK Wind Power Project

Vascular ACCDC Data and Significant Species/  
Habitat



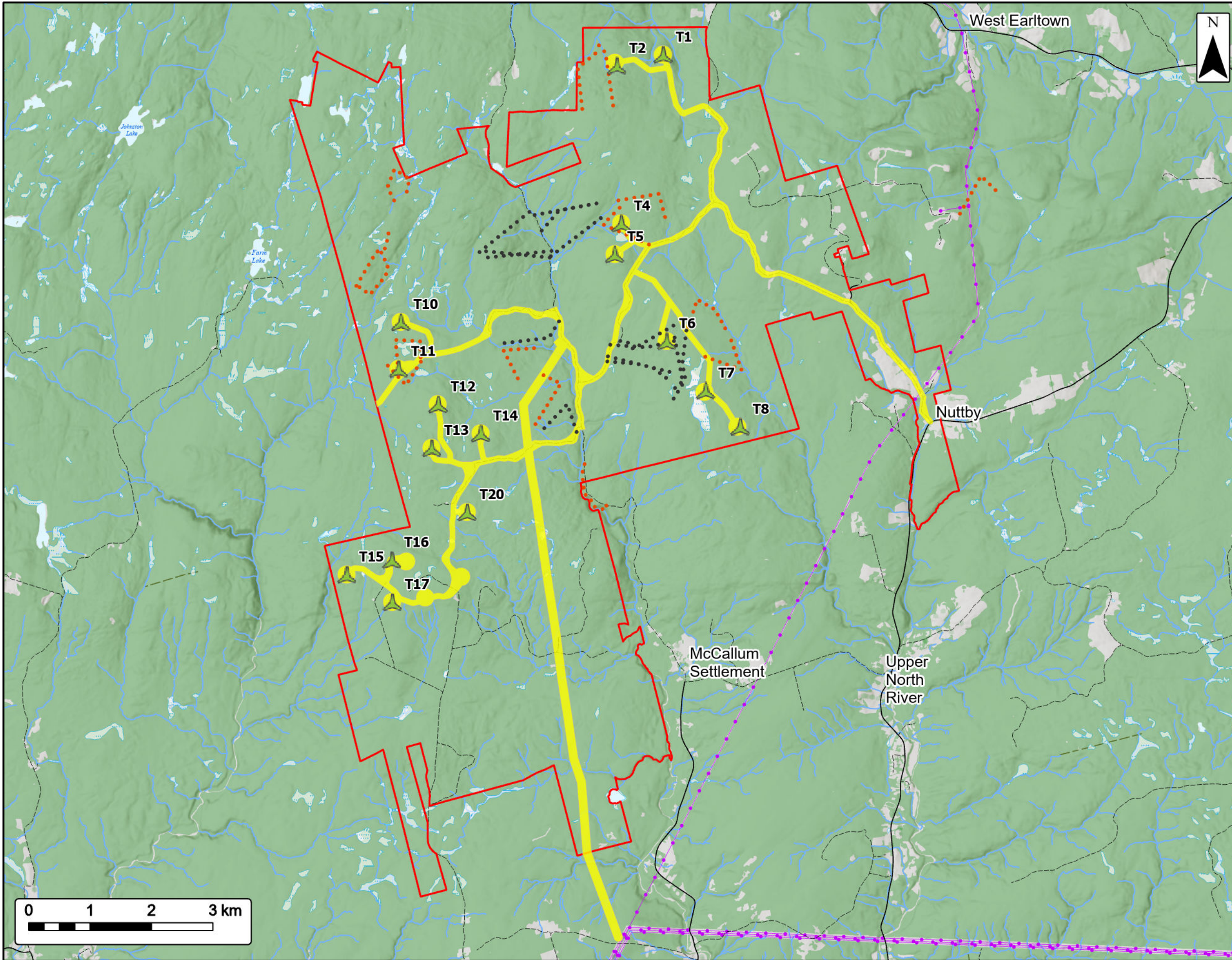
Study Area	
Assessment Area	
ACCDC Pt. Data	
Vascular Flora	
<b>Significant Species &amp; Habitats (NSNRR)</b>	
Deer Wintering	
Species at Risk	
<b>Utilities (line)</b>	
Existing Transmission Lines	
<b>Transportation</b>	
Road	
Unpaved Road	
<b>Water Features</b>	
Mapped Stream	
Mapped Indefinite Stream	
Mapped Lakes and Rivers	
Mapped Wet Area	



Coordinate System: NAD83 UTM Zone 20N  
Sources: Esri Basemaps, GeoNOVA, SNSIS, NRCan, NSNRR, ACCDC, IBA Canada

Date:	Oct 2023	Project #:	23-9127
Scale:	1:60,000	Drawing #:	<b>7.19D</b>
Drawn By:	K. Wallace		
Checked By:	M. Savelle		





**KmtnuK Wind Power Project**  
Fauna Transects



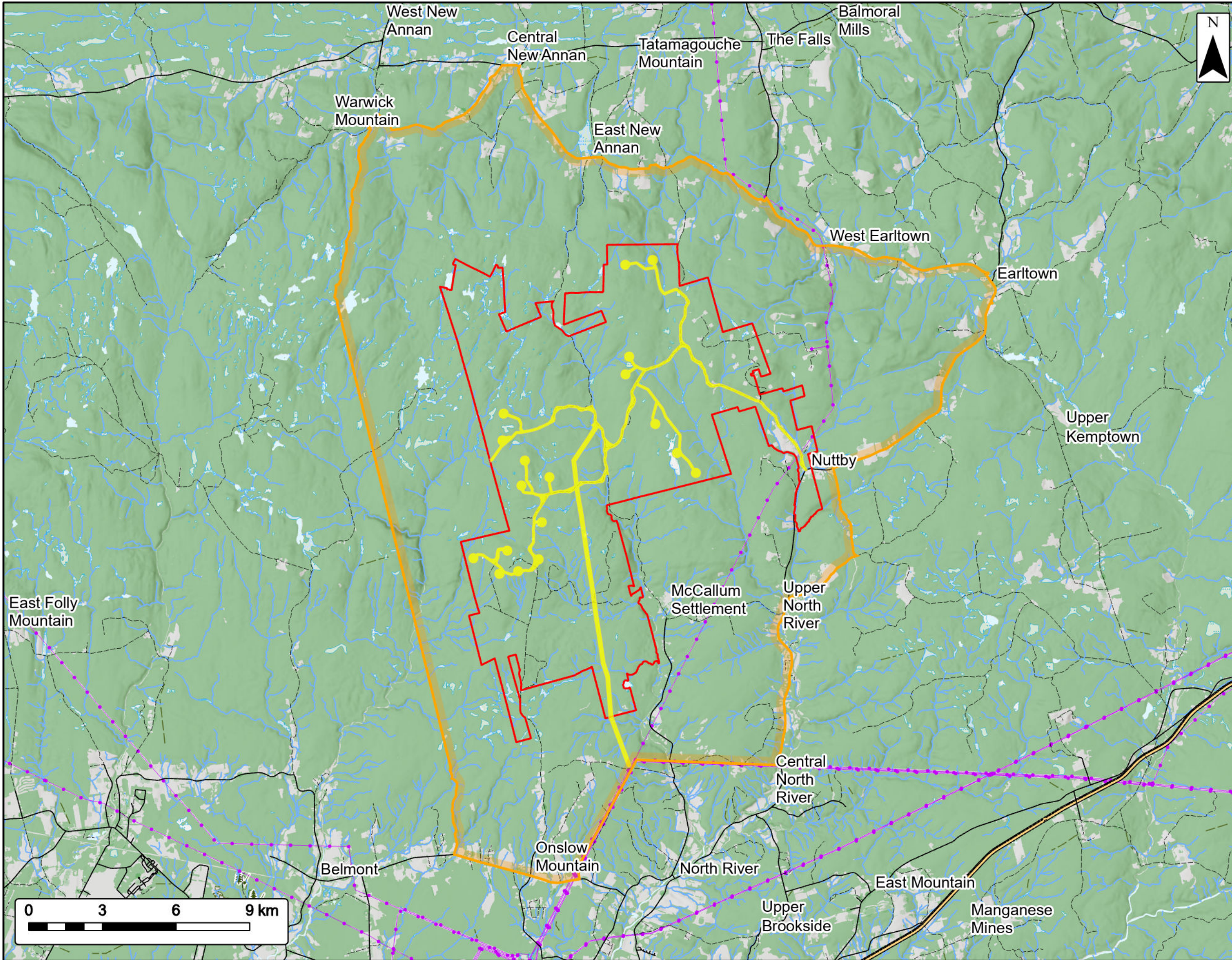
Study Area	
Assessment Area	
Proposed Turbine Location	
Pellet Survey Transects (Stantec)	
Winter Tracking Transects (Stantec)	
<b>Transportation</b>	
Trans-Canada Highway	
Highway	
Road	
Unpaved Road	
<b>Utilities (line)</b>	
Existing Pipeline	
Existing Transmission Lines	
<b>Water Features</b>	
Mapped Stream	
Mapped Indefinite Stream	
Mapped Lakes and Rivers	
Mapped Wet Area	



Coordinate System: NAD83 UTM Zone 20N Sources: ESRI Basemaps, GeoNOVA, SNSIS, NRCan, NSNRR, ACCDC, IBA Canada

Date:	Oct 2023	Project #:	23-9127
Scale:	1:60,000	Drawing #:	<b>7.20</b>
Drawn By:	K. Wallace		
Checked By:	M. Savelle		





**Kmt nuk Wind Power Project**  
Terrestrial RAA



- Study Area
- Assessment Area/Avifauna LAA \*
- RAA \*\*
- Utilities (line)**
- Existing Pipeline
- Existing Transmission Lines
- Transportation**
- Trans-Canada Highway
- Highway
- Road
- Unpaved Road
- Water Features**
- Mapped Stream
- Mapped Indefinite Stream
- Mapped Lakes and Rivers
- Mapped Wet Area

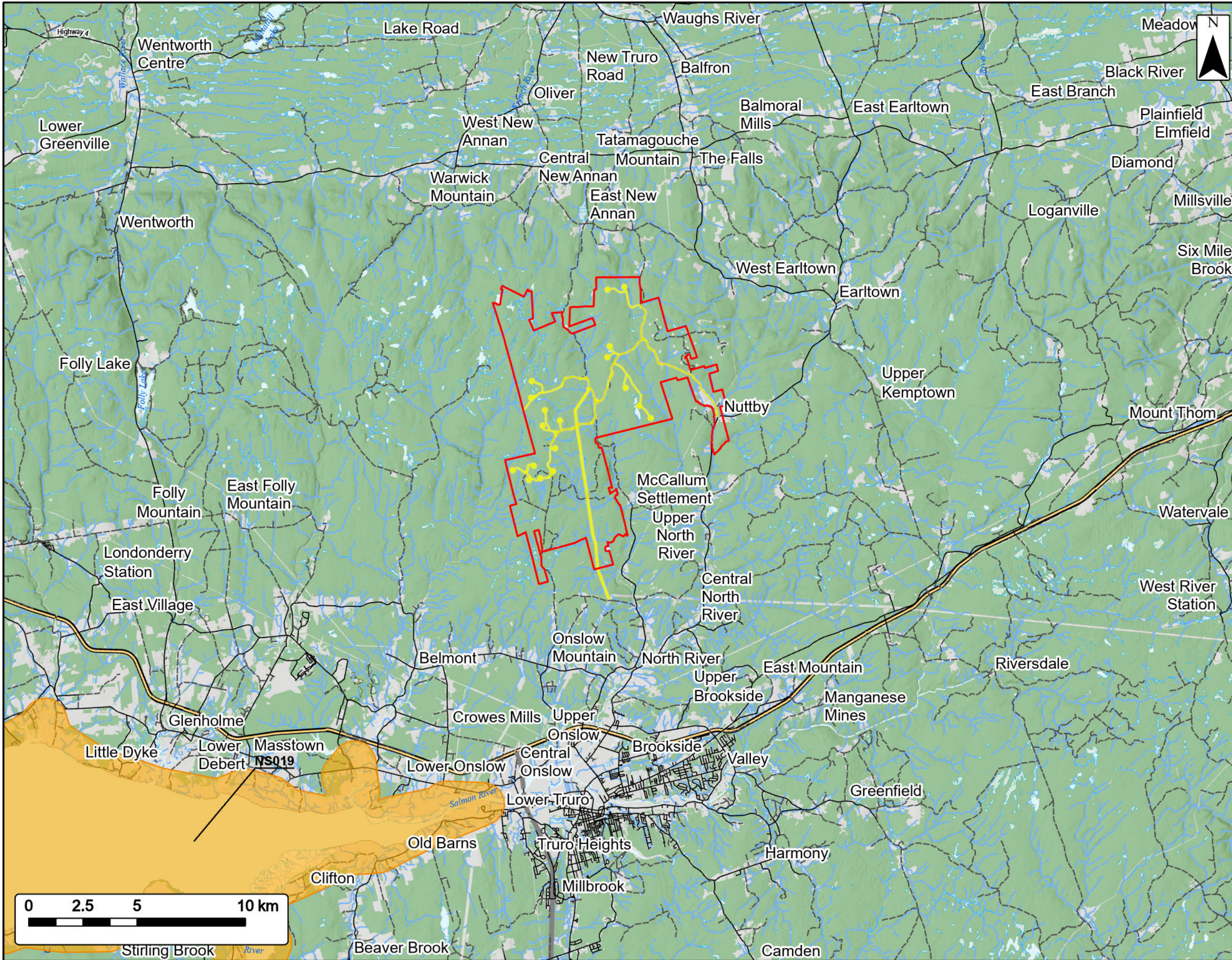
\* The LAA for avifauna includes the Assessment Area as well as the airspace that is directly surrounding the turbines.  
 \*\* The RAA includes the surrounding landscape, including the airspace above this area, up to approximately 3000 m.



Coordinate System: NAD83 UTM Zone 20N Sources: ESRI Basemaps, GeoNOVA, SNSIS, NRCan, NSNRR, ACCDC, IBA Canada

Date:	Oct 2023	Project #:	23-9127
Scale:	1:150,000	Drawing #:	<b>7.21</b>
Drawn By:	K. Wallace		
Checked By:	M. Savelle		





# KmtnuK Wind Power Project

Nearest IBA - NS019



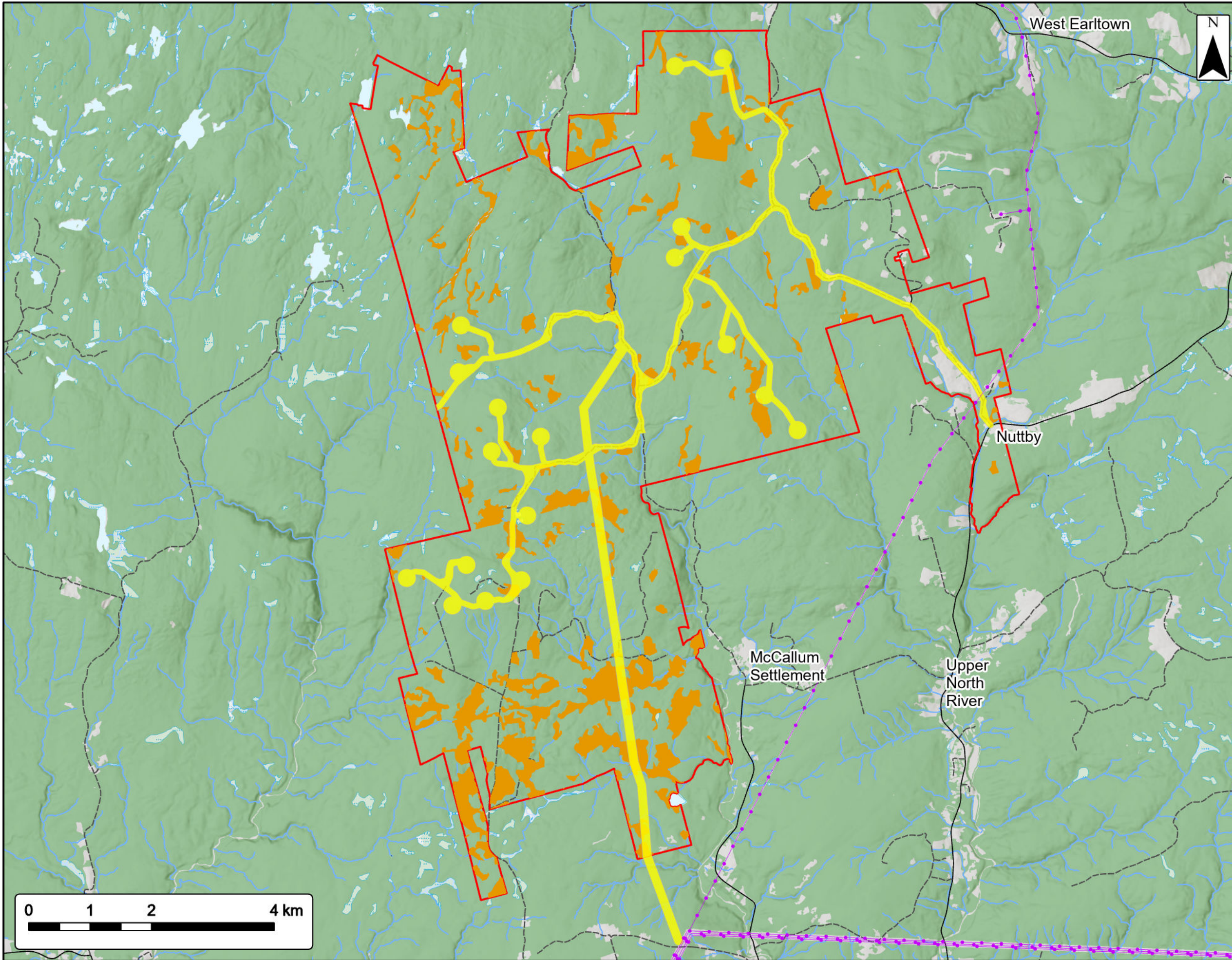
Study Area	
Assessment Area	
IBA - NS019	
<b>Transportation</b>	
Trans-Canada Highway	
Highway	
Road	
Unpaved Road	
<b>Water Features</b>	
Mapped Stream	
Mapped Indefinite Stream	
Mapped Lakes and Rivers	
Mapped Wet Area	



Coordinate System: NAD83 UTM Zone 20N  
 Sources: ESRI Basemaps, GeoNOVA, SNSIS, NRCAN, NSNRR, ACCDC, IBA Canada

Date:	Oct 2023	Project #:	23-9127
Scale:	1:170,000	Drawing #:	<b>7.22</b>
Drawn By:	K. Wallace		
Checked By:	M. Savelle		





# Kmt nuk Wind Power Project

Potential Canada Warbler Habitat



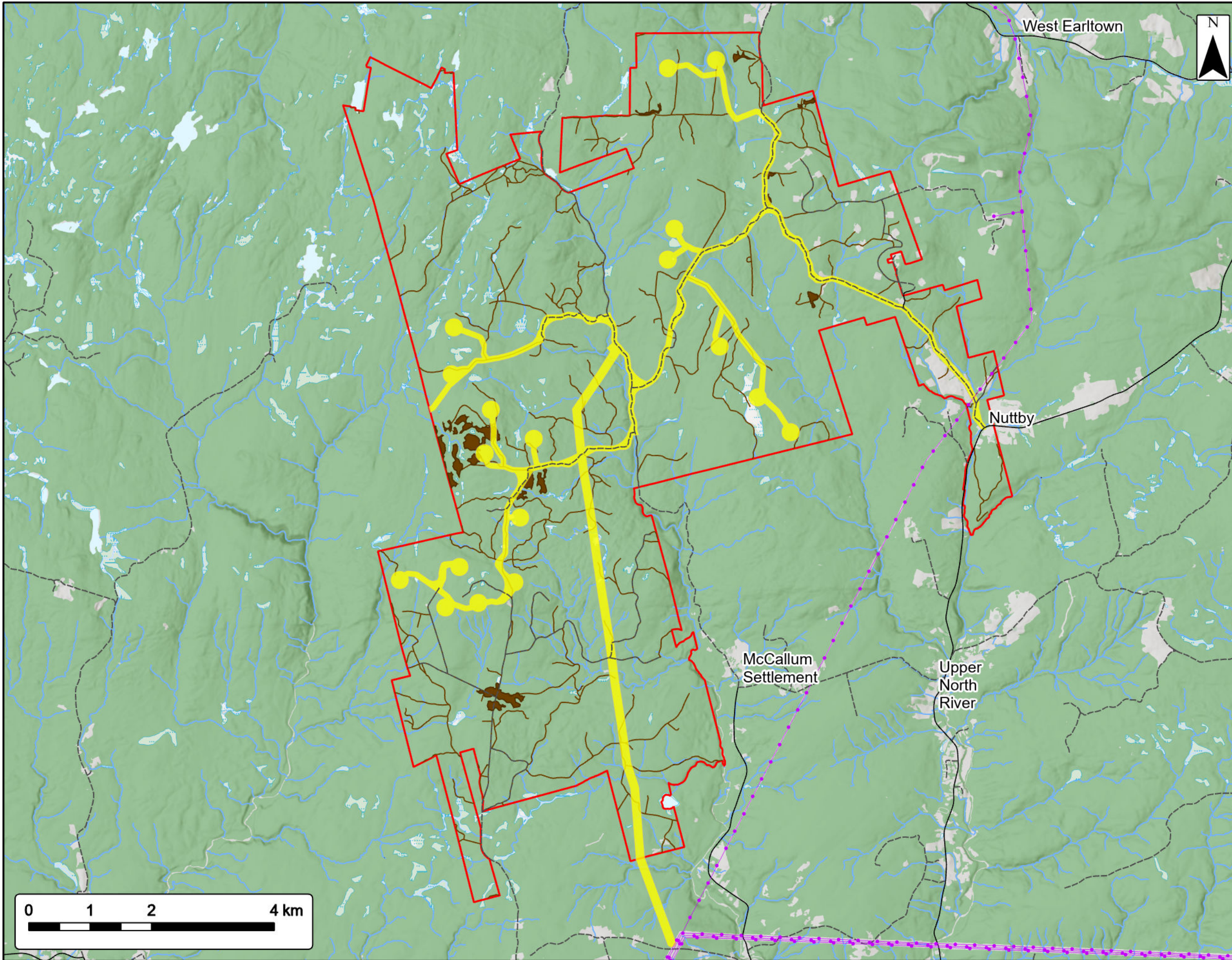
Study Area	
Assessment Area	
Canada Warbler	
<b>Utilities (Line)</b>	
Existing Transmission Lines	
<b>Transportation</b>	
Road	
Unpaved Road	
<b>Water Features</b>	
Mapped Stream	
Mapped Indefinite Stream	
Mapped Lakes and Rivers	
Mapped Wet Area	



Coordinate System: NAD83 UTM Zone 20N Sources: ESRI Basemaps, GeoNOVA, SNSIS, NRCan, NSNRR, ACCDC, IBA Canada

Date:	Oct 2023	Project #:	23-9127
Scale:	1:60,000	Drawing #:	<b>7.23A</b>
Drawn By:	K. Wallace		
Checked By:	M. Savelle		





# KmtnuK Wind Power Project

Potential Common Nighthawk Habitat



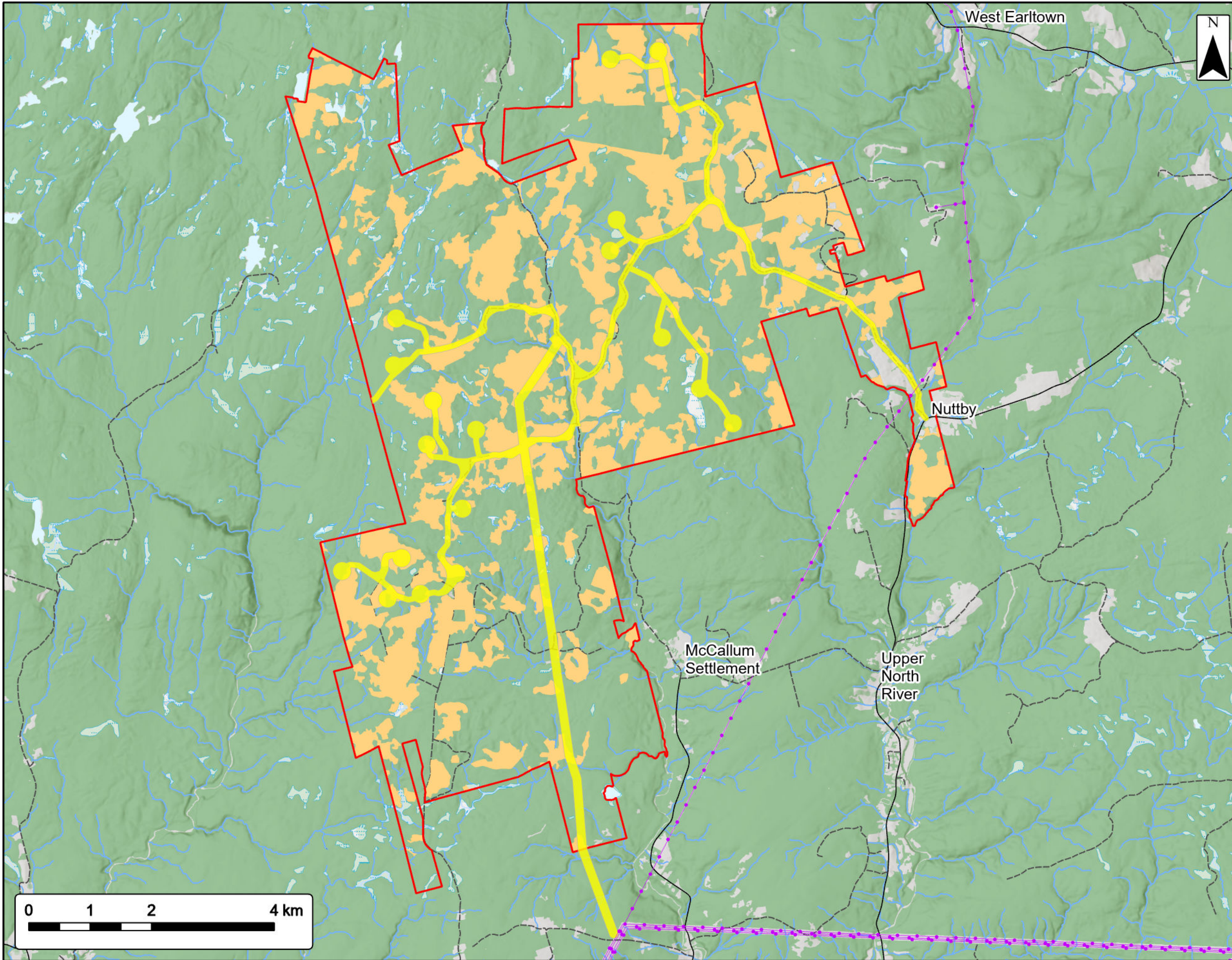
Study Area	
Assessment Area	
Common Nighthawk	
<b>Utilities (Line)</b>	
Existing Transmission Lines	
<b>Transportation</b>	
Road	
Unpaved Road	
<b>Water Features</b>	
Mapped Stream	
Mapped Indefinite Stream	
Mapped Lakes and Rivers	
Mapped Wet Area	



Coordinate System: NAD83 UTM Zone 20N Sources: ESRI Basemaps, GeoNOVA, SNSIS, NRCan, NSNRR, ACCDC, IBA Canada

Date:	Oct 2023	Project #:	23-9127
Scale:	1:60,000	Drawing #:	<b>7.23B</b>
Drawn By:	K. Wallace		
Checked By:	M. Savelle		





**Kmt nuk Wind Power Project**  
Potential Eastern Wood-Peewee Habitat



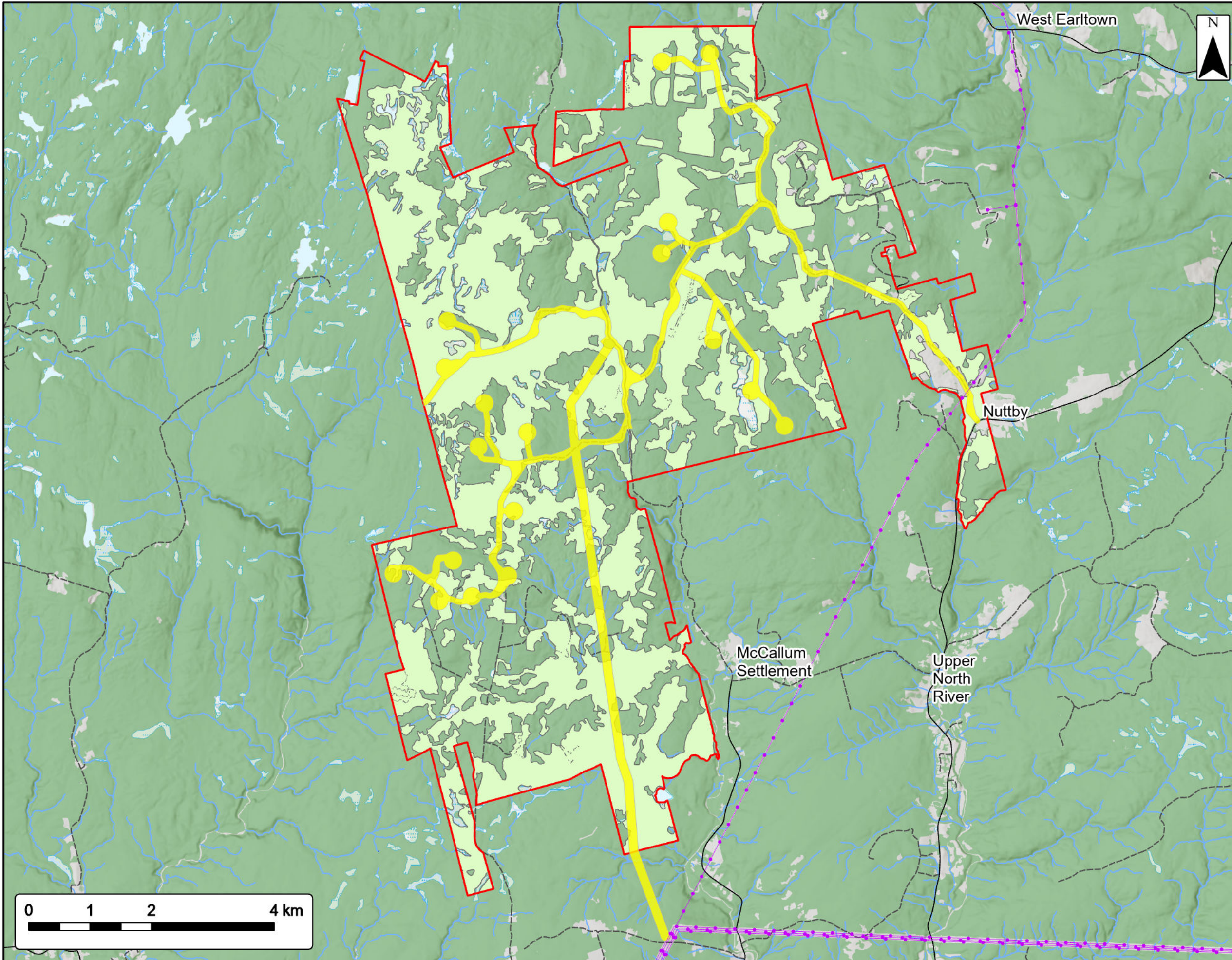
Study Area	
Assessment Area	
Eastern Wood Peewee	
<b>Utilities (Line)</b>	
Existing Transmission Lines	
<b>Transportation</b>	
Road	
Unpaved Road	
<b>Water Features</b>	
Mapped Stream	
Mapped Indefinite Stream	
Mapped Lakes and Rivers	
Mapped Wet Area	



Coordinate System: NAD83 UTM Zone 20N  
Sources: ESRI Basemaps, GeoNOVA, SNSIS, NRCan, NSNRR, ACCDC, IBA Canada

Date:	Oct 2023	Project #:	23-9127
Scale:	1:60,000	Drawing #:	<b>7.23C</b>
Drawn By:	K. Wallace		
Checked By:	M. Savelle		





**Kmt nuk Wind Power Project**  
*Potential Olive-Sided Flycatcher Habitat*



Study Area	
Assessment Area	
Olive-Sided Flycatcher	
<b>Utilities (Line)</b>	
Existing Transmission Lines	
<b>Transportation</b>	
Road	
Unpaved Road	
<b>Water Features</b>	
Mapped Stream	
Mapped Indefinite Stream	
Mapped Lakes and Rivers	
Mapped Wet Area	

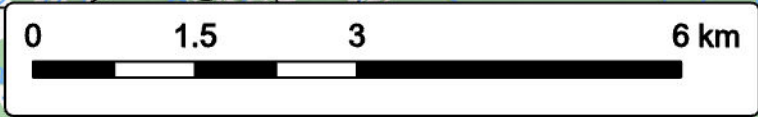
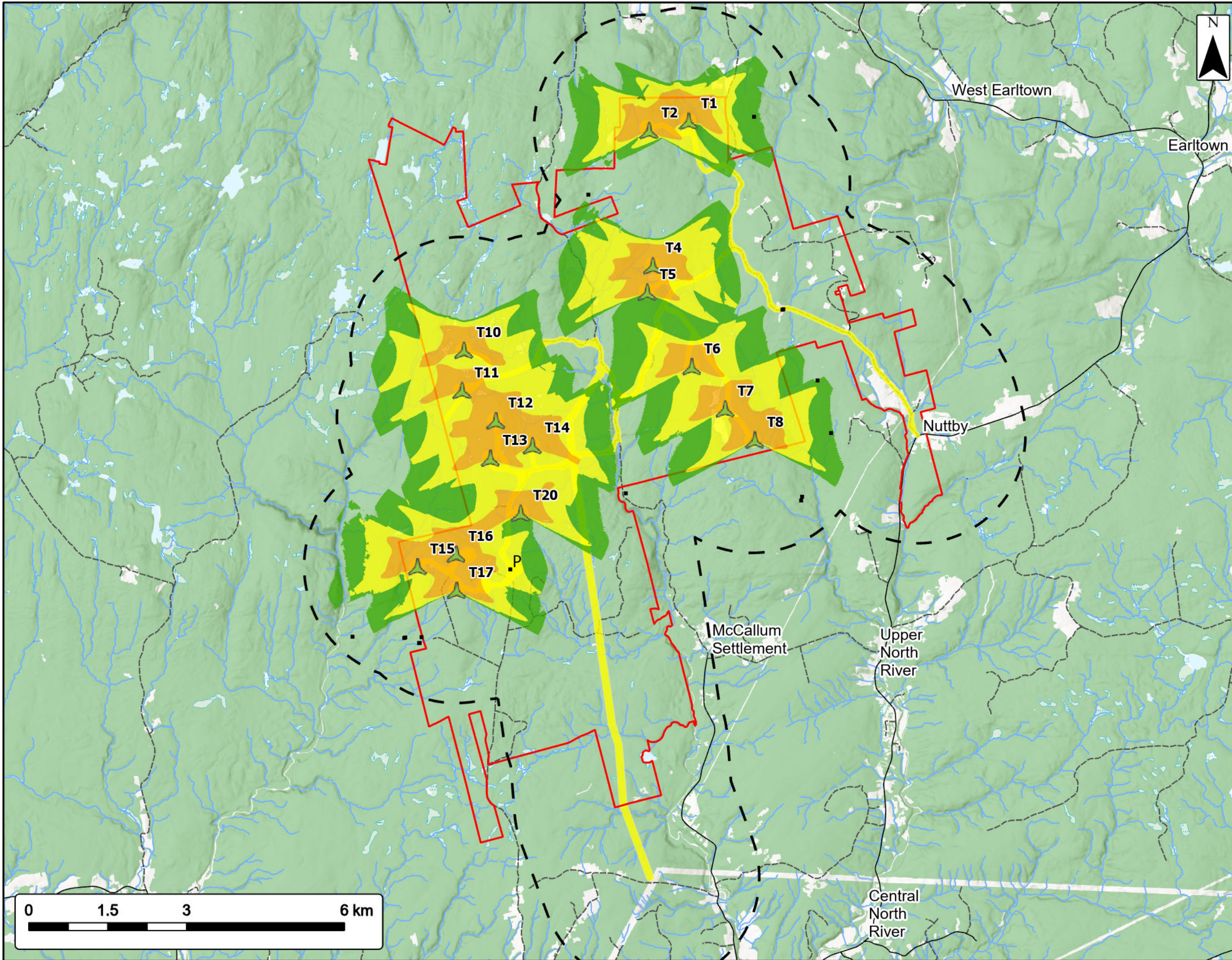


Coordinate System: NAD83 UTM Zone 20N Sources: ESRI Basemaps, GeoNOVA, SNSIS, NRCan, NSNRR, ACCDC, IBA Canada

Date:	Oct 2023	Project #:	23-9127
Scale:	1:60,000	Drawing #:	<b>7.23D</b>
Drawn By:	K. Wallace		
Checked By:	M. Savelle		







# KmtnuK Wind Power Project

Shadow Flicker - Assessment Scenario A



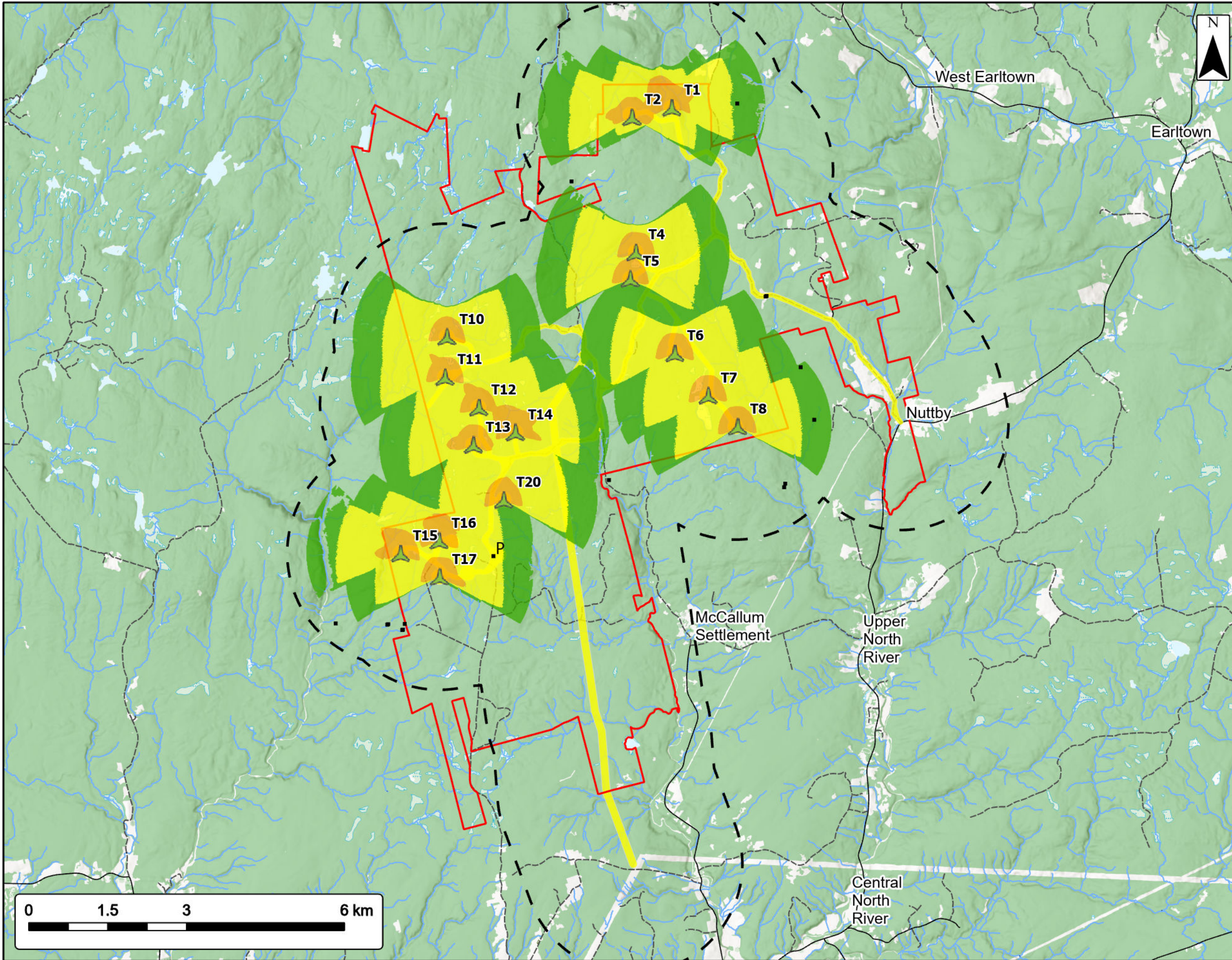
Study Area	
Assessment Area	
Proposed Turbine Location	
Non Participating Buildings within 2 km of Assessment Area	
2 km Assessment Area Buffer	
<b>Predicted Shadow Hours/Year (Worst Case)</b>	
10-30	
30-100	
100+	
<b>Transportation</b>	
Road	
Unpaved Road	
<b>Water Features</b>	
Mapped Stream	
Mapped Indefinite Stream	
Mapped Lakes and Rivers	
Mapped Wet Area	



Coordinate System: NAD83 UTM Zone 20N Sources: Esri Basemaps, GeoNOVA, SNSIS, NRCan, NSNRR, ACCDC, IBA Canada

Date:	Oct 2023	Project #:	23-9127
Scale:	1:70,000	Drawing #:	<b>10.1A</b>
Drawn By:	K. Wallace		
Checked By:	M. Savelle		





**Kmt nuk Wind Power Project**  
Shadow Flicker - Assessment Scenario A

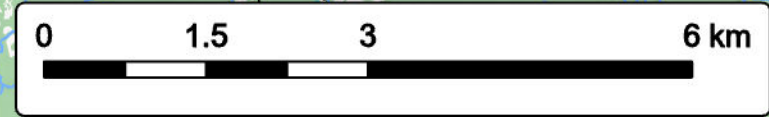


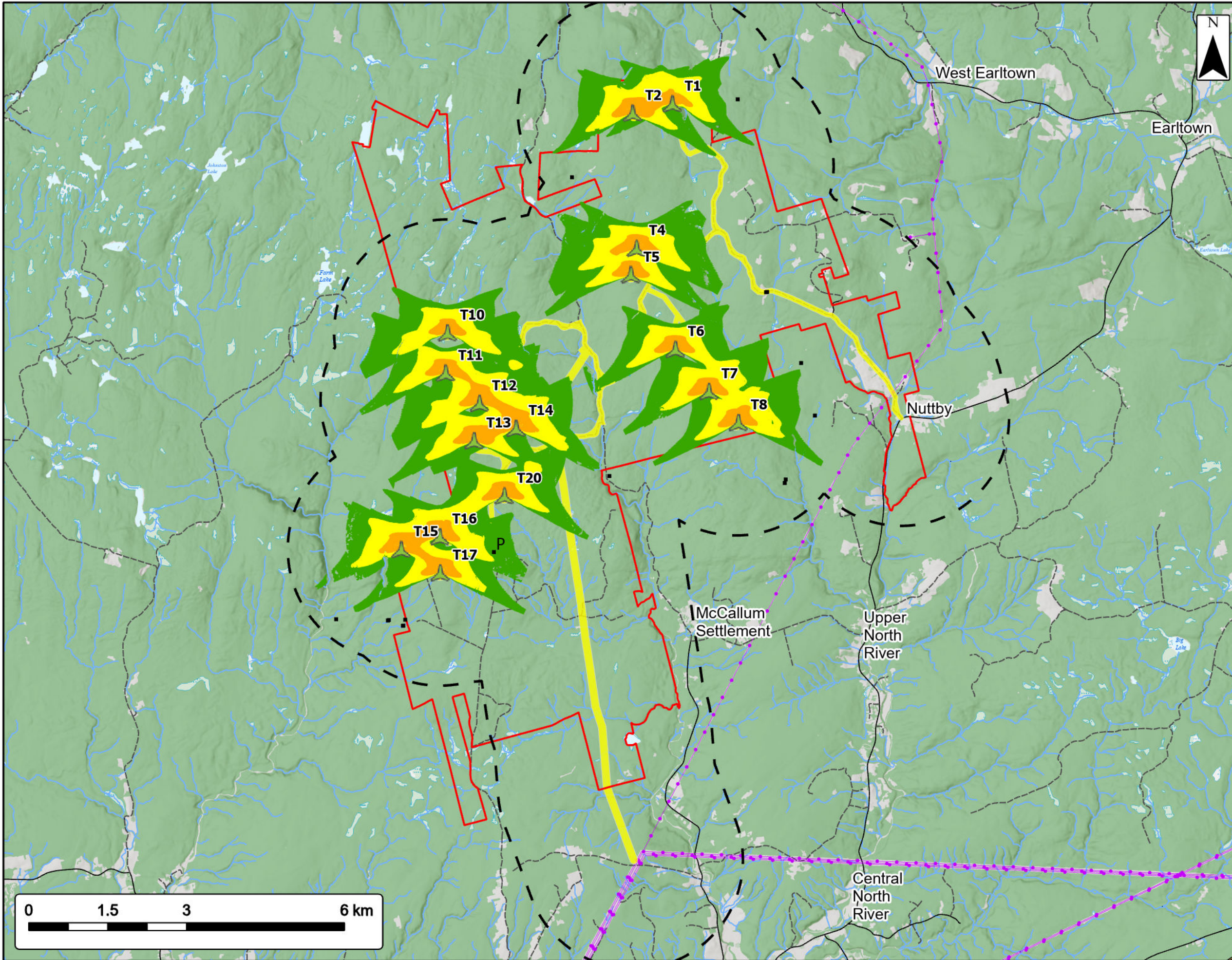
Study Area	
Assessment Area	
Proposed Turbine Location	
Non Participating Buildings within 2 km of Assessment Area	
2 km Assessment Area Buffer	
<b>Predicted Shadow Minutes/Day (Worst Case)</b>	
10-30	
30-100	
100+	
<b>Transportation</b>	
Trans-Canada Highway	
Road	
Unpaved Road	
<b>Water Features</b>	
Mapped Stream	
Mapped Indefinite Stream	
Mapped Lakes and Rivers	
Mapped Wet Area	



Coordinate System: NAD83 UTM Zone 20N Sources: Esri Basemaps, GeoNOVA, SNSIS, NRCan, NSNRR, ACCDC, IBA Canada

Date:	Oct 2023	Project #:	23-9127
Scale:	1:70,000	Drawing #:	<b>10.1B</b>
Drawn By:	K. Wallace		
Checked By:	M. Savelle		





**KmtnuK Wind Power Project**  
Shadow Flicker - Assessment Scenario B



Study Area	
Assessment Area	
Proposed Turbine Location	
Non Participating Buildings within 2 km of Assessment Area	
2 km Assessment Area Buffer	
<b>Predicted Shadow Hours/Year (Real Case)</b>	
10-30	
30-100	
100+	
<b>Utilities (Line)</b>	
Existing Transmission Lines	
<b>Transportation</b>	
Trans-Canada Highway	
Road	
Unpaved Road	
<b>Water Features</b>	
Mapped Stream	
Mapped Indefinite Stream	
Mapped Lakes and Rivers	
Mapped Wet Area	



Coordinate System: NAD83 UTM Zone 20N  
Sources: Esri Basemaps, GeoNOVA, SNSIS, NRCan, NSNRR, ACCDC, IBA Canada

Date:	Oct 2023	Project #:	23-9127
Scale:	1:70,000	Drawing #:	<b>10.1C</b>
Drawn By:	K. Wallace		
Checked By:	M. Savelle		

