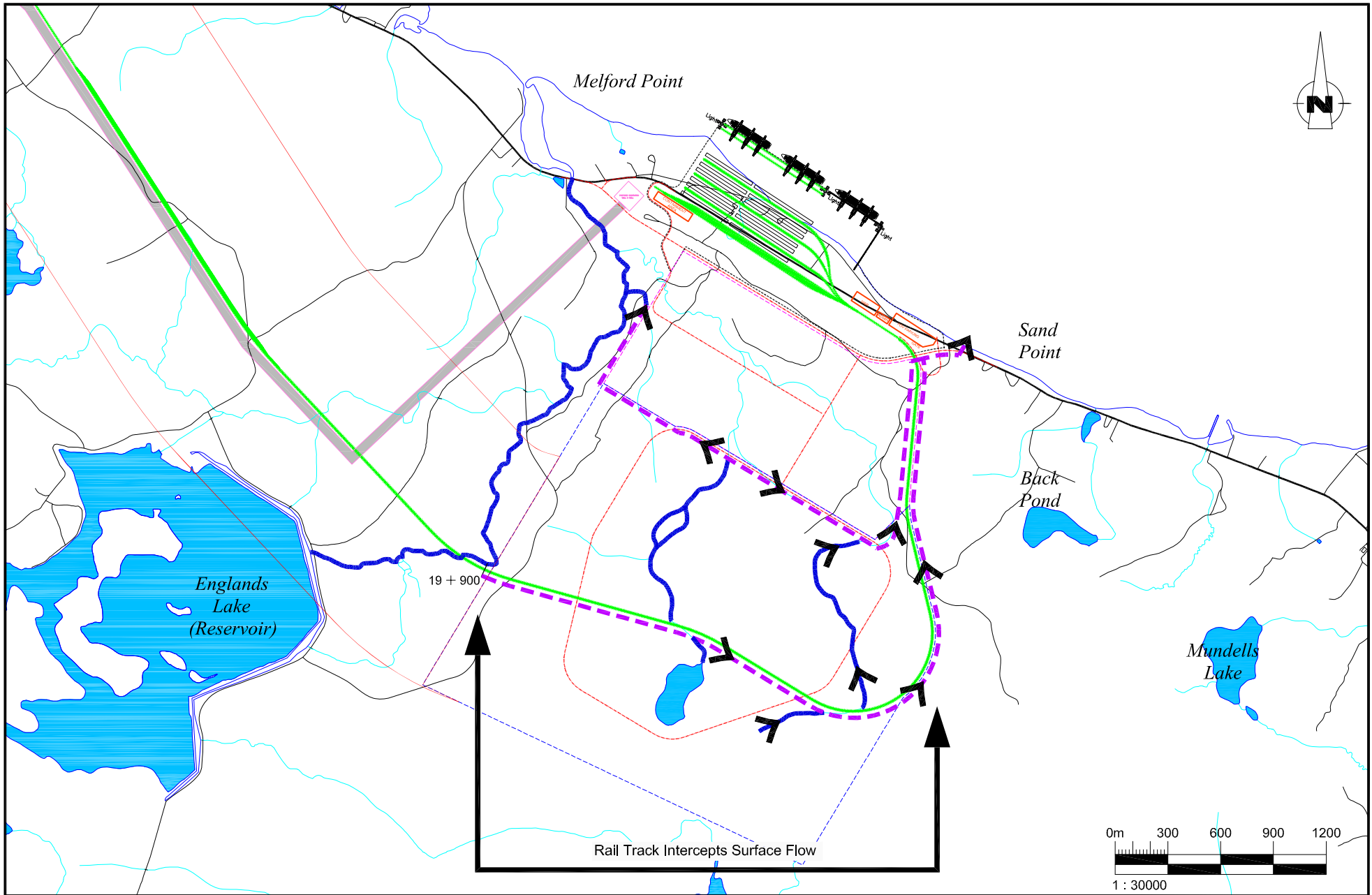


LEGEND:

- | | |
|-----------------------------------|---|
| ----- Proposed Melford Rail Track | ----- Proposed Melford International Terminal |
| ----- Existing Route 344 | ----- Initial Logistics Park |
| ----- Road Network | ----- Proposed NSPI Easement |
| | ----- Area of Dredging |

Source:
Nova Scotia Atlas, 5th Edition, 2001, Service
Nova Scotia and Municipal Relations, Nova Scotia Geomatics Centre

Figure 2.4-1
Melford International Terminal
Project Components
July 2008



LEGEND:

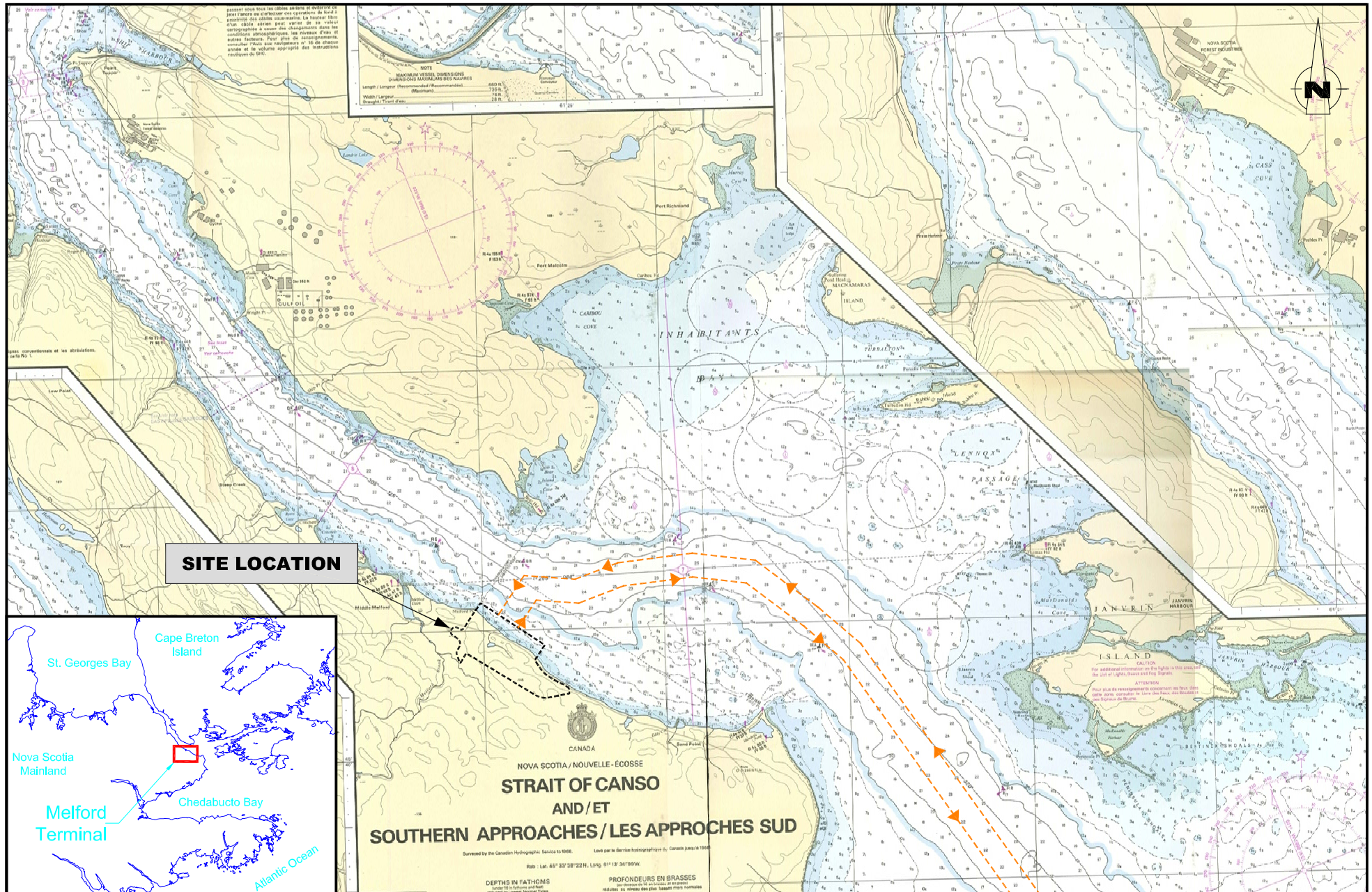
Proposed Melford Rail Track
 Existing Route 344
 Road Network

Proposed Melford International Terminal
 Environmental Baseline Study Corridor
 Initial Logistics Park
 Future Logistics Park Expansion
 Proposed NSPI Easement

Existing Water Courses
 Re-Routed Water Courses (Preliminary)

Source:
 Nova Scotia Atlas, 5th Edition, 2001, Service
 Nova Scotia and Municipal Relations, Nova Scotia Geomatics Centre

Figure 2.5-1
 Melford International Terminal
 Water Course Diversions
 (Preliminary)
 July 2008



LEGEND:

- Proposed Melford International Terminal
- Proposed Shipping Route

Figure 2.6-1
Melford International Terminal
Proposed Shipping Routes
July 2008

