

May 9, 2022

I and my neighbours are very alarmed at NCCI's intention to grow the Mount Uniacke Quarry by an order of magnitude from 3.99ha to 40ha. Living within 2km of the quarry since its inception in 2015 has been complete misery. The destruction of Uniacke Mines Road (UMR) by trucks traveling to and from the quarry, the absurd levels of dust, noise and fumes they create on Uniacke Mines Road, and the noticeable increase in litter are an insult to our community. Not to mention the ground vibrations and air concussions we suffer when you blast.

In advance of this week's community presentation, please address the following questions:

1. As most of the aggregate from your quarry goes to HRM (yes, we have followed your trucks), what true benefit does your operation actually do for the people and community of Mount Uniacke, besides creating pollution and ruining paved and gravel roads? A detailed explanation would be preferred Mr. Rogers.
2. Does NCCI have any connection or communication with SLAM Exploration Ltd. and their intent to begin drilling gold mining tests in the old Uniacke Gold Mine areas, directly next door to the recent 40 hectares of land you purchased from the Wilbur Family and Elmsdale Lumber?
3. Based on communication with NSDOE, NCCI has not opened a dialogue with the province on the quarry expansion. Having been asked repeatedly of NCCI's intention to expand at CLC (Community Liaison Committee) meetings, your answer has been no, yet by NCCI's own admission (CLC Quarry Expansion Intent email) an expansion plan has been in the works for over 2 years.
4. This is also evident from the purchase of 40.67 ha of land from Elmsdale Lumber in 2020. Why has NCCI not communicated with NSDOE? Why has NCCI been lying to the CLC and community for years?
5. Why should the community or province trust anything NCCI puts forward in regard to an expansion?

From a CONCERNED CITIZEN

Here's what Nova Scotia Environment offices, the Governing Body who issues 'Approval', has to say on the subject:

From the Environment Act:

AIR-QUALITY MANAGEMENT

Duties of and powers of Minister

111 (1) The Minister shall

(a) establish Provincial ambient air-quality standards or objectives necessary for the protection of the environment; and

(b) establish performance specifications and standards for air-quality testing and monitoring.

They say, "the particulate generated at a quarry are generally large heavy particles as opposed to small light particulate which would be more common in a combustion boiler stack exhaust"

They further say, "The Department expects the quarry to adhere to the Particulate Emission (Dust) limits set out in their Industrial Approval (IA), and continue with, "should exceedances be suspected. The typical triggers for monitoring dust are as a result of an inspection at the quarry (once every 3 yrs) or as a result of a complaint received."

NS Environment further says: "Reports are required from quarry operators on a 'once yearly' basis and consist of a summary of the quarry operator's monitoring efforts, complaints, and production details. Any exceedances of approval conditions are 'expected' to be reported immediately by the quarry operator!"

YOU DECIDE for yourself.....does this all sound like 'reasonable safeguarding' of your air quality?

ALL OVER THIS PROVINCE, quarry businesses have made it clear to us: the residents, homeowners, landowners, businessowners, the taxpayers and voters of these Communities that they're not much concerned with how 'WE FEEL' about them invading and changing our environments, as long as they've got the 'Approval' of our government body whom we 'entrust' the task of making 'good decisions for 'ALL' of us, for all the right reasons.

BUT THE QUARRY OPERATORS ARE NOT TO BLAME!!!! - because they do 'all' that is expected of them by Government, based on current Legislation.

No! the blame in this lies within our Government who makes the legislation that guides these decisions and then does not take into consideration, defining criteria that makes a certain application, NOT a 'one size fits all, cookie cutter' type application. They're the ones who 'allow' an industrial activity such as this to exist within the 'hub' of a Community, putting our air, our water, our bird and wildlife habitats, our way of life, our tranquility, our safety, our children's safety, our health at 'potential risk' and can offer 'no guarantees' there won't be 'negative impacts' for us to bear. They're the ones who can 'veto' Municipal zoning that doesn't allow for a quarry in a particular area. They're the ones who created the 4hectare loophole that allows these undertakings to escape the requirement of providing full scientific data of an area that only an Environmental Assessment (EA) can provide, even when it's known to be an 'environmentally sensitive area'. They're the ones who cannot tell you, if asked, what are the differences between the activities of a 4.1 hectare quarry and a 3.9 hectare that makes one require the EA, and the other, not. They're the ones that in the end will not tell you 'what Class of undertaking' was approved, or what parts of legislation guided their decision for that type.

If this Quarry can't be shut down rather than being allowed to expand, like so many others around our Province that are in areas where they don't belong and you experience issues with your Foundations or Wells (Water flow)

For communities, the displacement of water resources is one of the biggest concerns pits and quarries pose. However, there are many other concerns. Beyond the physical changes to the landscape, the daily barrage of noise, dust and exhaust produced by hundreds of dump trucks hauling aggregate can have serious effects on the health of people living nearby.

The Environmental Impacts of Aggregate Extraction

With the exception of those who work in the building trades, the closest most of us ever come to "virgin" aggregate (that is, aggregate that comes straight from an aggregate mine and has not been reclaimed from rubble or other debris) is at home building stores. While a bag of stones or gravel may look fairly benign, the process of getting it to us is anything but benign. Aggregate is mined from the earth, either dug out of pits or blasted out of quarries. This process has many significant environmental impacts.

Creating the pits or quarries requires the removal of virtually all natural vegetation, top soil and subsoil to reach the aggregate underneath. Not only does this lead to a loss of existing animal wildlife, it also leads to a huge loss of biodiversity as plants and aquatic habitats are destroyed. Moreover, adjacent eco-systems are affected by noise, dust, pollution and contaminated water.

*******Pits and quarries disrupt the existing movement of surface water and groundwater; they interrupt natural water recharge and can lead to reduced quantity and quality of drinking water for residents and wildlife near or downstream from a quarry site.*******

The province classifies pits and quarries as "interim uses of the land" and requires 100% rehabilitation of pits and quarries. Clearly this requirement is not being met. Destroyed ecosystems and source water aquifers are irreplaceable. This is not an interim land use. The landscape is blotted with destructive pits and quarries, and species of all kinds endure permanent negative impacts.

Of course, each pit or quarry has unique characteristics and impacts, but every pit or quarry will degrade the natural environment.

For communities, the displacement of water resources is one of the biggest concerns pits and quarries pose. However, there are many other concerns. Beyond the physical changes to the landscape, the daily barrage of noise, dust and exhaust produced by hundreds of dump trucks hauling aggregate can have serious effects on the health of people living nearby.

In the case of residents in Mount. Uniacke, Northumberland Quarry in their Public Report of Feb. 11/15 said on the issue of dust particles when blasting: 'verbatim'

"Given the distance of the quarry from the Uniacke Mines Road, the prevailing winds during most of the year being from the south and west "away from Cockscomb Lake" and with a difference in elevation of 150ft between the quarry floor and the highest point to the north, north east - **DUST FROM THE QUARRY WILL NOT IMPACT AREA RESIDENTS!!!!!!**" Well, prevailing winds from the south and west will / could blow the dust from the larger quarry directly into East Uniacke which is at a lower elevation!

Well, that may be all well and good IF we all lived in the Cockscomb Lake area, BUT WE DON'T, so what about the rest of us elsewhere in Mount. Uniacke???? Where the direction of winds WILL BE on that day AND, an even better question is, given how changeable our Maritime weather can be, including the winds, each and every hour of the day, HOW CAN "THEY" BE CERTAIN THE DUST THEY'RE CREATING ISN'T PERMEATING OUR HOMES and SCHOOLS, and OUR LUNGS?

OTHER MAJOR CONCERNS FOR THE COMMUNITY OF MOUNT UNIACKE

BLASTING: before expansion any/all blasting could be heard in East Uniacke. When/if quarry expands the blasting will be heard on the Beamish Road, East Uniacke and/or perhaps farther back in East Uniacke i.e. Tanglewood, Lakecrest (both on Lewis Lake) and perhaps farther back into East Uniacke - Cottage Country.

QUARRY TRUCKS: constant trucks in and out of Uniacke Mines Road. It has been observed and noted that the trucks go in and out on approximately a 5-minute interval going both ways at the same time. Uniacke Mines Road is supposed to be a "gravel" road but the gravel is almost non-existent so it's nothing but white dust which will / can go in ANY direction. Not only are the residents ON Uniacke Mines Road inundated with this dust, but the 4 sideroads - Partridge Lane opposite quarry entrance; Uniacke Mines Road into Cockscomb Lake Road to the right and Norman Lake Road to the left running off Uniacke Mines Road are also negatively affected by this dust.

UNIACKE MINES ROAD exits onto Hwy 1 opposite / between the two entrances of Uniacke House which is kept busy with visitors from in and out of province - and there is also a movie being made at Uniacke House this summer which will compromise Highway 1 - and with KOA Campground down the road just past Exit 3 we get a lot of visitors. Speed limit on this stretch of road is marked as 80km/hr. The speed limit then reduces to 50km/hr on entering the village where the Fire Hall, the Post Office, many homes, Esso / Tim Horton's and the Community Skateboard Park is, as well as the exit from Old Mines Road which enables residents from Rockwell Drive/Morning Breeze Drive (the largest subdivision population-wise in the community) as well as the Royal Canadian Legion (which has many, many public activities which also includes young children - i.e. active ball diamonds, Sea Cadets and seniors' activities on a regular basis) - to access Hwy 1 then reduces to 30km/hr through the school zone during the school terms / when children are present, increasing to 70km/hr at the end of the school zone - Pentz Lake - and onward through to the site of the old shale quarry where the speed limit increases to 80km/hr past the Industrial Park, Uniacke Pizza, Uniacke Pub and many more homes before reaching Exit 3 access to the Hwy 101.

We bring the speed limits to your attention re: after watching the trucks coming and going from the quarry property, we arranged to have a couple of the trucks followed on their journey in and out to determine the "truck activity" through the busiest part of the community of Mount Uniacke and it was confirmed that the speed limits are NOT followed.

Residents have reported cracked foundations on Partridge Lane; residents in East Uniacke have been able to hear the blasting in some instances. With the proposed expansion, residents in East Uniacke will be subjected to hearing the blasting even more. If this quarry is ALLOWED to continue and expand, they should be made to repair / pay for repairs to:

1. Cracked foundations
2. Replacement of / re-drilling of private wells
3. Cleaning / washing of houses hit by the constant dust from the trucks OR the road paved to avoid constant dust - at the expense of the quarry company.
4. Constant running of quarry trucks in and out Uniacke Mines Road should be at set times in connection to working hours 9-5 Monday through Friday and no truck-running on Statutory Holidays.
5. Set speed limit s/b limited along Uniacke Mines Road re: residential area and ALL speed limits posted along Hwy 1 should be adhered to, especially past the Skateboard Park and the School.

Questions should be directed to our Provincially-Elected Officials to look into notifying proper authorities and setting regulations: What if and when reports can be made to proper authorities and how? Brad Johns, MLA is the Provincial Rep for this area of Mount Uniacke.

SLAM is a project-generating company holding a portfolio of gold, silver, and base metal properties in the mineral-rich Canadian provinces of New Brunswick, Nova Scotia, and Ontario.

SLAM Acquires Mount Uniacke Gold Property

TSX.V: SXL

www.slamexploration.com

MIRAMICHL New Brunswick, Aug. 16, 2019 (GLOBE NEWSWIRE) -- SLAM Exploration Ltd. ("SLAM" or the "Company" on TSXV: SXL) is pleased to announce that it has acquired an option to earn 100% interest in the Mount Uniacke gold property (the "Property") located in Nova Scotia, Canada. The first discovery of gold at Mount Uniacke was made on June 18, 1865 by I

Subsequently, a number of gold-bearing leads (veins) and gold-bearing slate belts were discovered. According to provincial gold records, from 1867 to 1941, the Mount Uniacke property produced more than 27000 ounces of gold.

To acquire 100% interest in the Property, SLAM will pay \$450,000 through a series of instalments as follows:

Due Date	Cash Payment
Upon Approval	\$15,000
On or before Nov 30, 2019	\$10,000
On or before 1 st anniversary	\$50,000
On or before 2 nd anniversary	\$100,000
On or before 3 rd anniversary	\$100,000
On or before 4 th anniversary	\$175,000

The Optionors retain a 3% NSR royalty. SLAM holds the right to buy back 1% NSR for \$500,000 and 1% NSR for \$1,000,000 at any time. SLAM holds right of first refusal on the remaining 1% NSR.

The Property:

The Mount Uniacke Gold Property comprises 25 claims within 2 exploration licenses covering 404 hectares of Meguma sedimentary rocks. The Property can be accessed by secondary roads in central Nova Scotia. Gold at Mt. Uniacke occurs in leads and slate belts associated with fold structures within the Meguma sediments. SLAM intends to conduct a drilling program to test the depth potential of gold-bearing leads below the historic workings.

The Meguma Gold Terrane:

The Uniacke Gold Property is located near the centre of the Meguma terrane, a wedge of metasediments up to 120 kilometers wide extending for 480 km, the length of Nova Scotia. The Meguma is host to numerous gold deposits dating back to Canada's first gold rush following the discovery of gold at Mooseland, Nova Scotia in 1853. The Meguma returned to production status in 1917 when Atlantic Gold Corp. began production on its Moose River project.

Analytical QA/QC Procedures: The gold values reported are based on historical records.

About SLAM Exploration Ltd:

SLAM is a project generator with a portfolio of gold assets that include the recently acquired Mt. Uniacke gold project, the Menneval gold project in New Brunswick, and the Reserve Creek, Miminiska and Opikengen gold projects in Ontario. SLAM holds NSR royalties on the BMC properties and on the Superjack, Nash Creek and Coulee zinc-lead-copper-silver properties in the Bathurst Mining Camp ("BMC") of New Brunswick. The Company utilizes an extensive BMC mineral database to acquire and evaluate properties in this prolific mineral region. Additional information about SLAM and its projects is available at www.slamexploration.com or from SEDAR filings at www.sedar.com. Follow us on twitter @SLAMGold.

Qualifying Statements: President and CEO of SLAM Exploration Ltd., as the Qualified Person, approves the scientific and technical disclosure in this news release.

Certain information in this press release may constitute forward-looking information, including statements that address Private Placements, closing of Private Placements, future production, reserve potential, exploration and development activities and expected events or developments. This information is based on current expectations that are subject to significant risks and uncertainties that are difficult to predict. Actual results might differ materially from results suggested in any forward-looking statements. The Company assumes no obligation to update the forward-looking statements, or to update the reasons why actual results could differ from those reflected in the forward looking-statements unless and until required by securities laws applicable to the Company. There are a number of risk factors that could cause future results to differ materially from those described herein. Information identifying risks and uncertainties is contained in the Company's filings with the Canadian securities regulators, which filings are available at www.sedar.com. Neither the TSXV nor its Regulation Services Provider (as that term is defined in the policies of the TSXV) accepts responsibility for the adequacy or accuracy of this release.

CONTACT INFORMATION:

President & CEO

[@slameexploration.com](https://twitter.com/slameexploration)

SEDAR: 00012459E

Comments from original quarry request:

THINGS 'YOU' NEED TO KNOW ABOUT THE QUARRIES IN YOUR COMMUNITY.....this info is not meant to create alarm or upset, nor is it being presented as a 'fear monger' as the Quarry operators and Government would have you believe. This info is meant to simply 'inform' you so that you can then do your own Research to make 'informed decisions' for yourself, your family, your environment! Form your own questions you may want to ask of Government!

It is hoped that the following info will give NOT ONLY the people closest to the quarry sites, but also those elsewhere, enough insight to "REALIZE" that it's NOT JUST THE PEOPLE IN THE IMMEDIATE AREA OF THE QUARRIES that should be concerned. Here's just a few ways it "may" impact you, your family, your enjoyment of where you live, your very health!!!!

DID YOU KNOW?

- "ALL" Quarries when blasting, crushing and working with / transporting the rock blasted will put a widely known carcinogen (cancer causing agent) called Silica Dust into our air, a dust so fine it can't be seen but will be carried throughout our Community via the winds (from the quarry site itself and from the trucks that carry it over our roads).

- some will say, "but the trucks are covered securely". NOT ALL! People have witnessed this already and even if they are, the trucks' tires and other components will be carrying / dropping dust that'll be dispersed in the winds as they travel on their routes to their destinations, dropping pollution as they go

- if this was an 'infrequent occurrence' it wouldn't be an issue, but this will be a 'daily' occurrence over many years

RESEARCH SAYS, the following notes of interest:

- the closer you live to such an industrial site, the greater and higher the concentration and danger

- Silica dust has been found to cause lung cancer, silicosis (of which there's no cure) and other health hazards, of particular concern for those already suffering with any type of upper respiratory disease / illness such as asthma, COPD. Young children and seniors will be most vulnerable.

- our bodies have no means of expelling the particles once they infiltrate our lungs

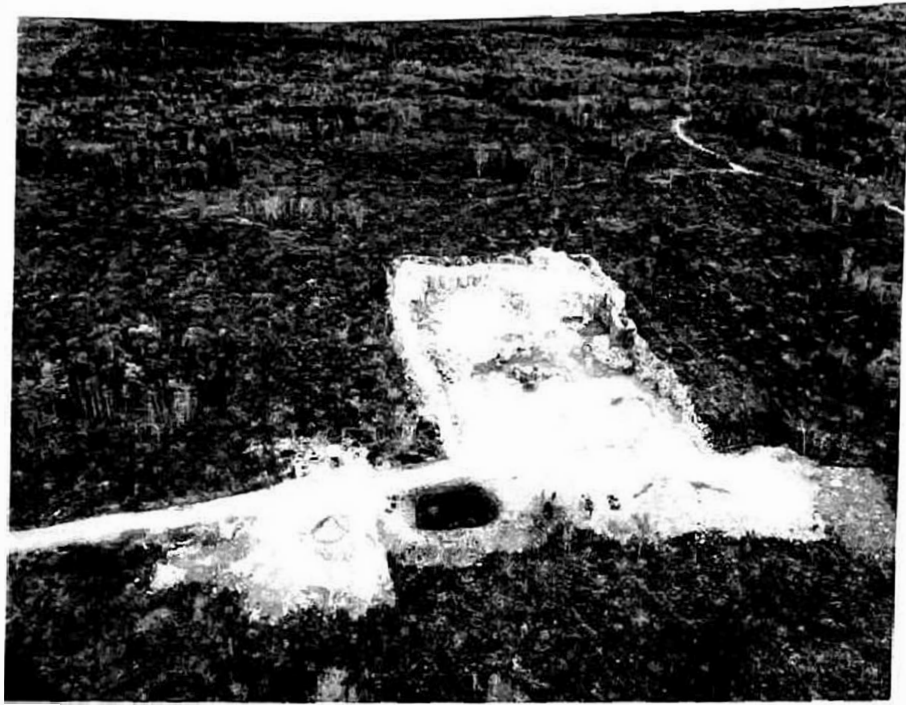
- this dust is cumulative

THAT'S A LOT OF CONTAMINATION!!!!

- it permeates buildings (OUR HOMES / BUSINESSES / SCHOOLS) through HVAC systems, clings to inanimate objects like our homes, outdoor/playground equipment, trees, 123.5

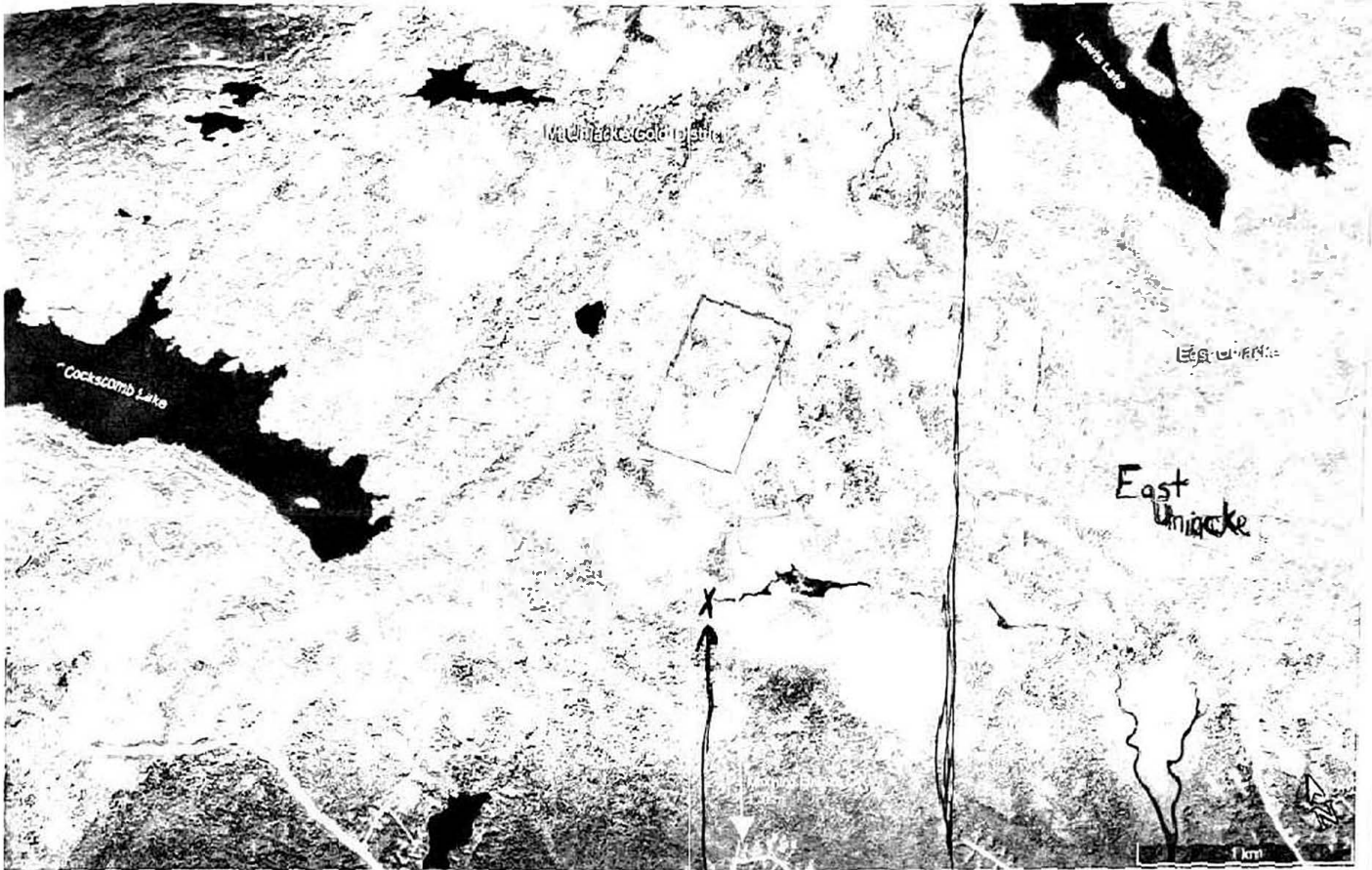
- Heightened summer water temperature in an on-site lake could have a detrimental impact on the viability of coldwater fish in an adjacent stream.
Potential harm to on-site and off-site wetlands
- Loss of habitat for the Jefferson Salamander, which is designated as threatened under the federal Species at Risk Act
- Potential loss and fragmentation of continuous natural environment

Of course, each pit or quarry has unique characteristics and impacts, but every pit or quarry will degrade the natural environment. For pits or quarries situated on lands designated as ecologically significant, this degradation has an even greater adverse impact.



Nov 2020 - (above) the Beamish Rd and Lewis Lake areas are to the right of the center of the pic
-the Rockwell Dr and Sackville River headwaters are bottom right out of sight beyond
the picture borders - Cockscomb Lake is far left following that road out less than 1km away





X Head of Sackville River

Proposed expansion of quarry marked in red. 4 hectares at present 40 hectares proposed

Map is set north, south, east, west. Looking south - Morning Breeze Drive at end of Old Mines Road is 1.7km away from the proposed/present quarry. Heading west - Sackville River Headwaters are 250m south of the edge of the proposed/present quarry. Continue heading west - Cockscomb Lake is 1.2km west of the proposed/present quarry. Looking northeast - end of Jorphie Lane at end of Lakecrest on Lewis Lake with small inlet connecting to Tanglewood is 1.6km away from proposed quarry extension. From the same "corner" of proposed quarry extension point to the northeast is the Beamish Road 1.5km away. Continuing to head east it's 2.5km to MacKenzie Lane/Charles Drive area.

In the photo you can see the Sackville River headwater which runs into the East Uniacke Road residential area.

The river flows through the residential area of East Uniacke under the bridge on the East Uniacke Road and works its way into the residential area of South Uniacke to cross under the bridge on South Uniacke Road. The river eventually works its way through to the KOA Campground just beyond Exit 3 access to the Hwy 101. The Sackville River crosses under the bridge on Hwy 101 and flows through and into McCabe Lake and beyond via the Sackville River.

YOU NEED TO KNOW that the Approval of this Quarry has "NO" Terms and Conditions attached to it that were put there to help you.

PROTECT YOUR INVESTMENTS NOW, TODAY!!! It cannot be stressed enough. Take dated photos of your foundations "all around". If you have a well, get it tested for content, make sure it's dated. Re-do every year to always have up-to-date data in the event an 'oversized' blast from this quarry derails or shuts down your water table altogether, or cracks your foundation.

It was mentioned that it would be helpful to folks IF we knew what the 'blast' dates were scheduled to be. Something to check out and post on the Newsletter site at a later date, keep an eye out for that!

We have it on good authority, they just 'Approved' another one over in East Uniacke - that makes 4 for this part of East Hants now! **HOW MANY QUARRIES DO WE NEED IN ONE COUNTY????** The 'potential risks' to our health, our environments, the environments of our wild/birdlife, endangered species living in some wetlands, our brooks, streams and lakes are what will bear the costs of too many!!!!

We "ALL" need to get the message across to Government loud and clear that we're not going to stand for it any longer in our Communities that we pay our 'hard working' tax dollars to support. We 'all' need to ask ourselves, WHY do we NOT have any say in what goes in our neighborhoods?

Government doesn't care enough about the average resident nearby a Quarry operation to ensure there are financial 'restitution' clauses built into these Permit Approvals, for those residents, shop owners, etc.

They've designed a process that from start to finish trips all over itself to 'accommodate' the corporations wanting to run these undertakings in our Community, legislation that is full of 'loopholes' designed for their ease and worry free processes, all the while shutting out the concerns of the public.

There is NO 'consideration' whatsoever, built into it for the homeowners, local businesses, schools and their concerns. This is a 'discrimination of our rights' from start to finish in that the Corporations are treated one way and the public is treated in another, and the public's is not a 'positive' way.

And, that is a discrimination against our Charter of Rights!

ARE YOU AWARE!! The Gov't has now 'Approved' four (4) quarries in our vicinity that are 'ALL' operating. They are located in Mount Uniacke (Northumberland, off Uniacke Mines Rd, near Beamish/Old Mines Rd); East Uniacke (two locations not that far apart - S.W. Weeks and newest one there was just Approved after Mt. Uniacke's) and the fourth one is located in Upper Rawdon (A.W. Davis Quarry). A.W. Davis and S.W. Weeks were the first ones and longest history.

The ? That needs asking of our Gov't is what does one small Community need with 4 industrial quarries and all the 'negative' impacts they bring with them for environments? We 'all' know that quarries are essential to our economic growth and producing the products needed for our construction industry. It's not the existence of quarries 'per se' that is debated - it is 'where' our Gov't Body 'Approves' them to go. In the case of the Northumberland one, it is smack dab in the middle of an established Community of schools, residences, summer homes, businesses, pristine lakes, and streams. The Headwaters of the Sackville River, some 650ft below from where the Mt. Uniacke quarry sits atop a hill - is home to two 'endangered species' the Eastern Wood Turtle and Wild Atlantic Salmon, surrounded by a minimum of 2 hectares plus of 'essential wetlands'!