

APPENDIX A

PUBLIC ENGAGEMENT



nova sustainable fuels

As the world moves away from fossil fuels, the need to produce renewable energy will substantially increase. Electricity already powers a portion of our global energy system; however, it cannot power it all. As a result, alternatives must be sought.

Around the world, governments and industries are focused on decarbonizing the transportation sector, which accounts for approximately one quarter of all greenhouse gas emissions – sustainable fuels will help propel that movement forward.

Nova Sustainable Fuels is committed to using green energy to produce sustainable fuels targeted at aviation and marine transport.

who we are

Nova Sustainable Fuels is pioneering the future of green transportation by harnessing renewable energy to create sustainable fuels.

Headquartered in Halifax, Canada, Nova Sustainable Fuels is backed by Octopus Energy Generation. As one of Europe's largest specialist renewables investors, Octopus manages 4.3 GW of green energy projects like wind and solar farms in over 18 countries.

Nova Sustainable Fuels is bringing one of eastern Canada's most ambitious energy projects to life – developing over 1GW of onshore renewable electricity and producing 165,000 tonnes of sustainable aviation fuel annually.

project

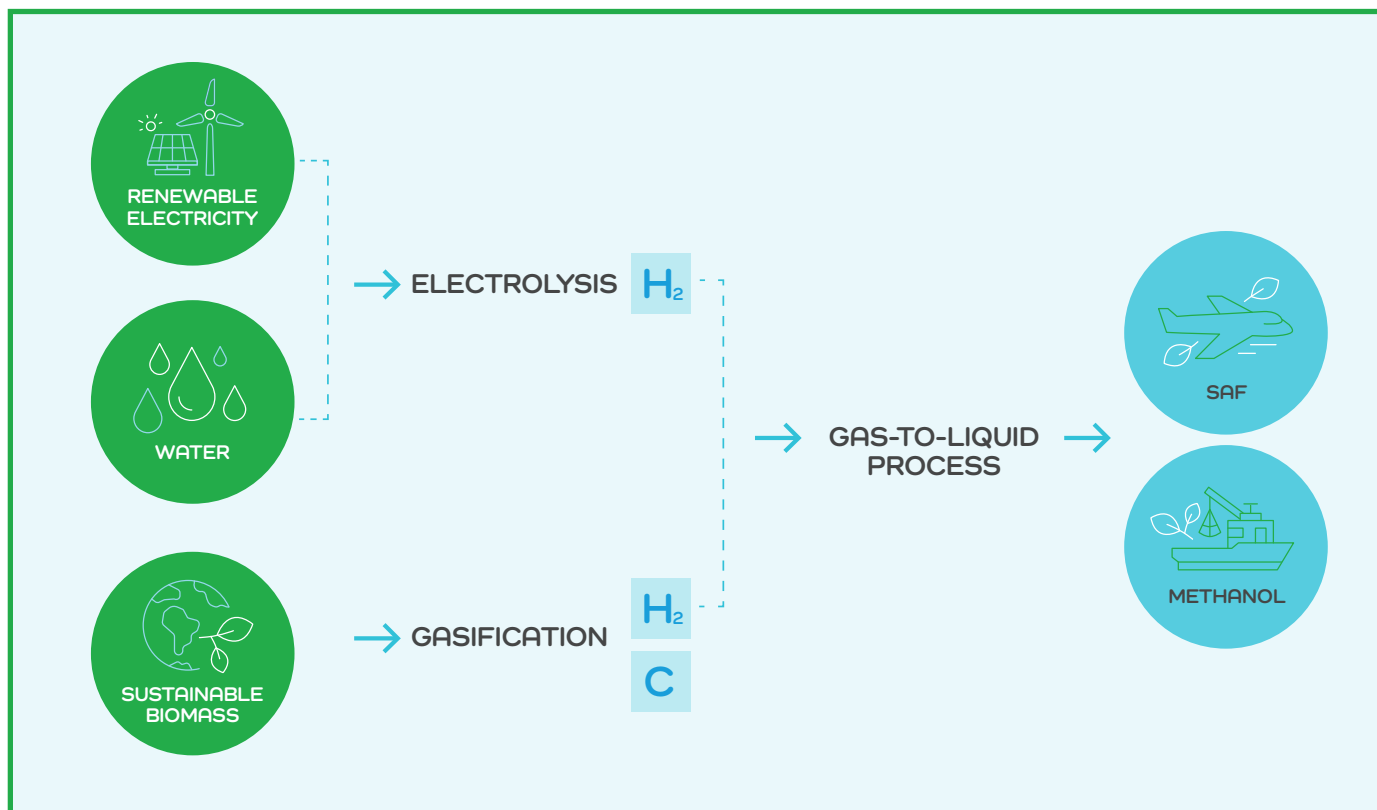
We're building a Renewable Energy Park (REP) on Nova Scotia's Eastern Shore that will produce two critical low-carbon alternatives for the transportation sector: sustainable aviation fuel (SAF) and renewable methanol.

SAF is made from renewable materials and performs just like traditional jet fuel – minus the emissions. In fact, our SAF is expected to cut greenhouse gas emissions by more than 90% compared to conventional jet fuel. And because it's a drop-in fuel, it works with existing aircraft and fuelling infrastructure – no modifications needed.

Renewable methanol – also produced onsite – will help decarbonize the shipping industry and serve as a versatile, low-carbon building block for other products.

Powered by our own solar and wind farms, the REP will combine renewable electricity, sustainable biomass, and water to produce these fuels – creating a fully integrated clean energy system.

This is more than a project. It's a long-term investment in Nova Scotia and a cleaner future for generations to come.



why it's needed

To tackle climate change, we need more than just clean electricity. We need bold alternatives to power the parts of our world that can't plug in – especially transportation. That's where sustainable fuels come in.

As countries and industries race to decarbonize, sustainable fuels are emerging as a critical piece of the puzzle – offering low-emission solutions for sectors where electrification alone isn't enough.



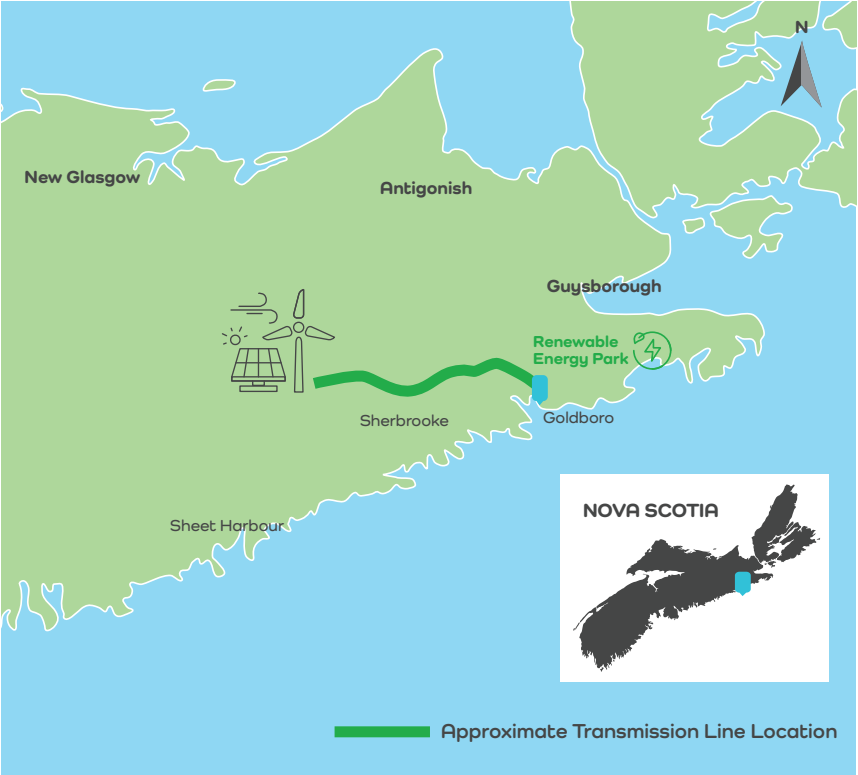
nova
sustainable
fuels

location

The map to the right shows the proposed layout for our project infrastructure. Our REP will be located in Goldboro, with a transmission line connecting the facility to planned solar and wind farms in the District of St. Mary's.

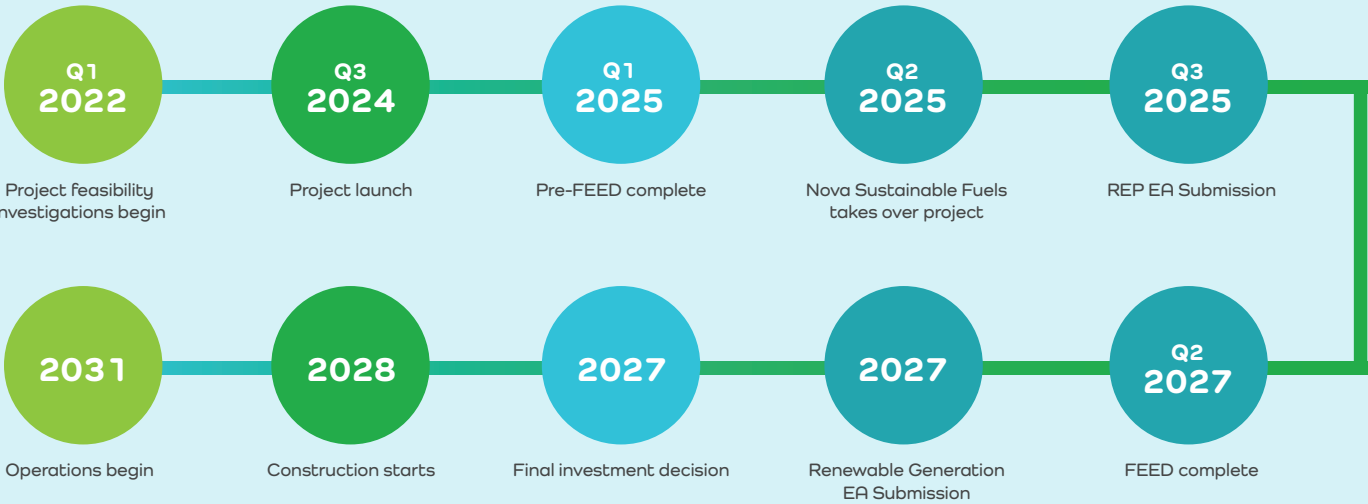
We're still in the early stages of development, and we're committed to doing this right. That means minimizing impact on the environment and surrounding communities. Our team is currently conducting in-depth studies to determine the best locations for wind turbines and the most suitable route for the transmission line.

As we gather more data and consult with local stakeholders, we'll refine these plans and share updates with you every step of the way.



timeline

Construction is expected to commence in 2028 after all required permits have been obtained, and the project is expected to be operational in 2031.



FAQs

Why here in Nova Scotia?

Nova Scotia has a rare convergence of critical project elements: ample worldclass wind and solar generation opportunities, an abundant and underutilized sustainable biomass supply, and an excellent coastal site for deep-water marine facilities.

How will this benefit me and my community?

This project brings more than clean energy – it brings real local benefits. From long-term, well-paying jobs to increased tax revenue that supports public services, the project will deliver lasting economic impact right here at home.

Our products (SAF and renewable methanol) will be used to power the transportation sector with low-carbon solutions – helping reduce emissions globally. It's a future-forward investment that protects our environment, supports our economy, and creates a healthier planet for generations to come.

What is biomass?

Biomass is renewable organic material that contains the carbon and hydrogen needed to create sustainable fuels.

We plan to use woody biomass – a by-product of existing sawmill operations and responsible forest management practices like thinning. Thinning is a process where some trees are removed to allow other trees to grow larger. It's a smart, sustainable way to turn natural leftovers into sustainable fuel.

Why are you using biomass?

Biomass contains carbon and hydrogen, both of which are required to make sustainable fuels.

Nova Scotia is over 75% forested, creating a steady, renewable supply of local, sustainable biomass. Right now, much of that biomass is being shipped overseas as low-value woodchips. We're changing that by turning this underutilized feedstock into sustainable fuels, keeping economic benefits right here at home.

Where will the biomass come from?

We plan to use locally-sourced woody biomass that will be trucked or barged to the REP.

How will construction impact me?

Significant impact on neighbouring residences is not expected during construction or operations. We will provide more information on construction plans as we progress.

We expect an increase in vehicular traffic on Route 316. A traffic management study is planned, and the results will be shared.

Why do you want to produce sustainable aviation fuel?

We're proud to be part of a global push to replace fossil fuels with clean, sustainable energy. Producing SAF is a powerful way to drive that change forward. Demand for SAF is rising fast, both locally and globally, and supply hasn't caught up. We're here to help close that gap – and put Nova Scotia on the map as a leader in the future of sustainable fuels.

How will fuel be moved once it is produced?

Finished liquid fuels will likely be moved primarily via ship. We expect approximately one export ship per month, on average throughout the year. Bringing biomass to the REP may require up to two ships per month. We do not anticipate a significant increase in marine traffic because of this project.

What permits does the project require?

Nova Sustainable Fuels is committed to following all federal, provincial, and municipal standards. The project requires a provincial Class 1 Environmental Assessment, and depending on the final design, federal permitting may also be needed.

How much will this project cost?

A final cost has not been determined, but this project is projected to cost multiple billions of dollars.

get in touch

Nova Sustainable Fuels believes that building strong relationships is crucial to successful projects.

As this project takes shape and evolves, our team would like to gather your feedback and answer your questions. We recognize the value of local knowledge and want to become part of your community. As we share information on the project, we hope you will share your own insights.

We will continue to provide updates as more information becomes available. For any further information or questions you may have, please contact us at: info@novasustainablefuels.com

YOU'RE INVITED!

Learn About the Future of
Sustainable Fuels in Goldboro



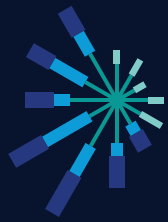
Date: Wednesday, July 23, 2025

Time: 4–6 p.m.

Location: Goldboro Interpretive Centre
(12881 Highway 316)

For more information, please contact:
info@novasustainablefuels.com





Simply Blue
Group

Nova Scotia Sustainable Fuels Project

We believe that building strong relationships is crucial to having successful projects. Over the coming months and years, we at Simply Blue Group would like to meet with you and answer your questions. We would like to gather your feedback and insights because we recognize the value of local knowledge.

This document will provide you with a high-level overview of our proposed project here in Nova Scotia.

Who are we?

Simply Blue Group is a leading renewable energy developer headquartered in Ireland, with offices worldwide. We are a part of a global movement to replace fossil fuels with clean energy. Our dedicated Hydrogen and Sustainable Fuels Team is focused on the development of competitive sustainable fuels projects, which will use green energy to produce sustainable fuels targeted at aviation and marine transport.

What is your project? What do you want to do?

We want to build a renewable energy park (REP) on the Eastern Shore of Nova Scotia. A REP is a facility used to produce clean fuels using proven, mature technologies. We will produce sustainable aviation fuel (SAF) and bio-methanol at our REP.

SAF is produced from renewable materials. It is used to power aircraft and can match the performance of conventional jet fuel (derived from fossil fuels) while significantly reducing carbon emissions. It will be used as a “drop in” fuel – meaning it can drop straight into existing fuel infrastructure on aircraft. Bio-methanol will be used to power ships and create other products.

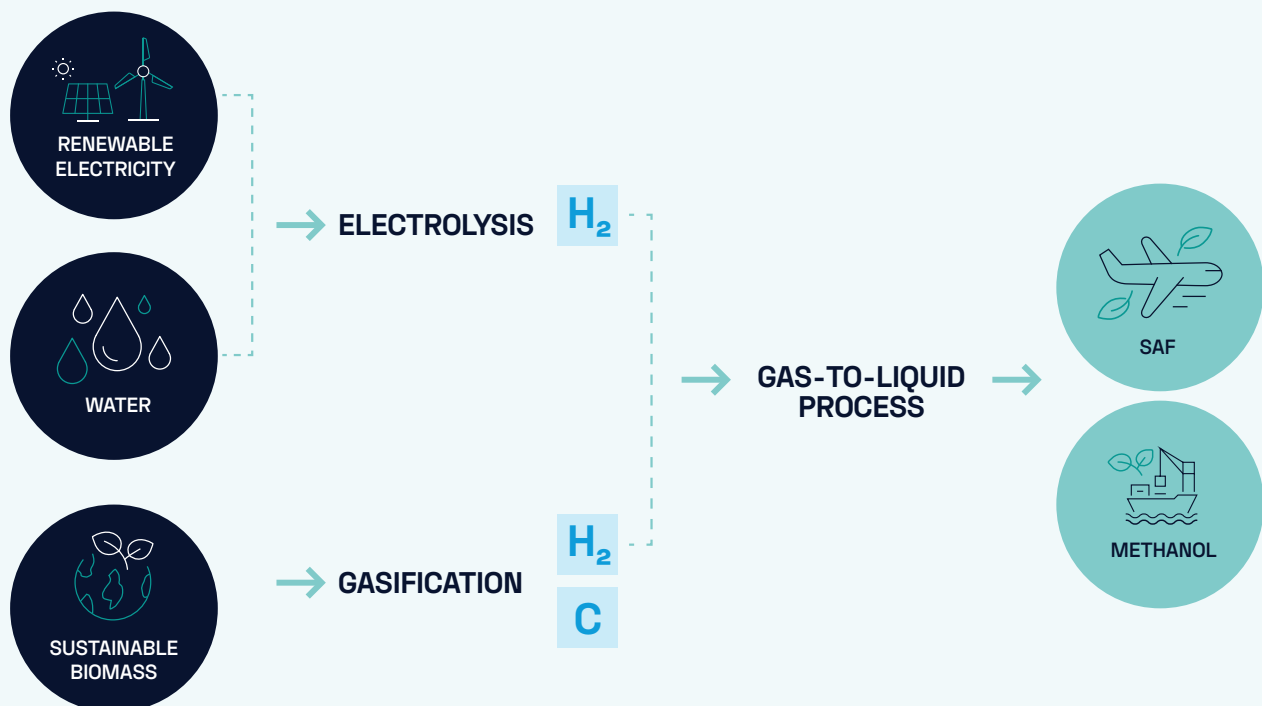
We will power the REP with renewable electricity generated from our solar and wind farms.

This self-produced power, local sustainable biomass and water will be used to produce SAF and bio-methanol.



What is Biomass?

Biomass is renewable organic material that comes from plants. It contains carbon and hydrogen – both required to make sustainable fuels. The biomass we will use is a co-product of tree harvesting. Our biomass will come from locally managed forests with sustainable practices (forest carbon cycle continues).





Where will the project be located?

The map above shows approximate locations for our project infrastructure. We will have wind and solar generation in the district of Saint Mary's and a renewable energy park in Goldboro. A transmission line will connect the two areas.

We're coming to you very early in this project. We are currently conducting detailed studies to determine exactly where each wind turbine will be located and how many we need. We're also investigating various routing options for the transmission line. Suitable locations and routes will be identified after further studies and consultation with First Nations and other key stakeholders.

As soon as this information becomes available, we will let you know.

Why is this project needed?

As the world moves away from fossil fuels to combat climate change, we will need to produce more renewable energy. Electricity already powers a portion of our global energy system; however, it cannot power all of it. As a result, we must seek alternatives.

Around the world, governments and industries are focused on decarbonising the transportation sector, which accounts for approximately one quarter of all greenhouse gas emissions – sustainable fuels will help propel that movement forward.

We currently have three large-scale sustainable fuels projects in development in Canada, Ireland and Australia.

Why here in Nova Scotia? Couldn't you be anywhere in the world?

Nova Scotia has a rare convergence of critical project elements: there are ample world-class wind generation opportunities, an abundant and underutilized biomass supply, and an excellent site with deep-water marine facilities.

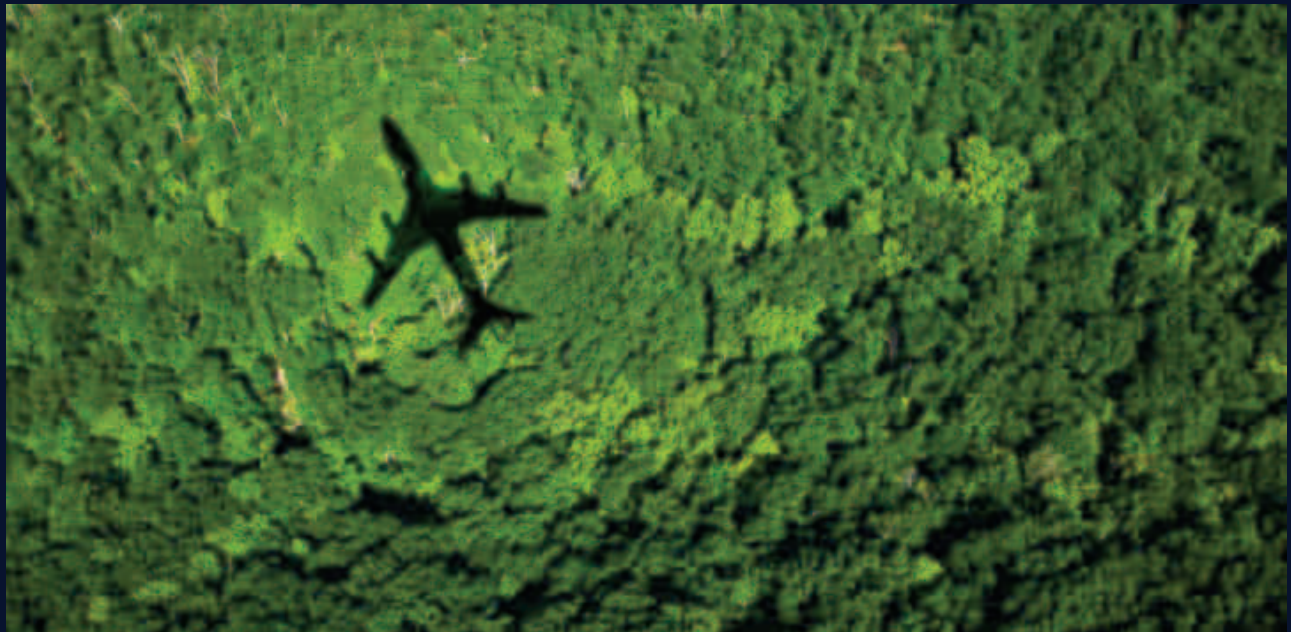
How will this benefit me and my community?

At a local level, this project will provide long-term, well-paying jobs and generate tax revenue.

Our products will supply local, national and international markets. This will benefit future generations through clean sustainable fuels replacing fossil fuels, reducing emissions at home and around the world.

When will you start this project?

We expect to start construction of the first phase of the project in 2026 and be operational in 2029.



Get in touch

We will continue to provide updates as more information becomes available. Please reach out if you have any questions – we would love to hear from you. Please contact:

Megan Harris, Stakeholder Engagement Lead

megan.harris@simplybluegroup.com



Simply Blue
Group

JOIN US FOR OUR

PROJECT **LAUNCH**

SATURDAY, SEPTEMBER 14

11:00AM - 2:00PM

Come learn about Nova Scotia's new
sustainable fuels project



Join us to learn more about Nova Scotia's new sustainable fuels project and to meet our team. Bring the whole family for food, fun activities and prizes.

We look forward to seeing you there!

Location: Goldboro Interpretive Centre
(12881 Highway 316)



Questions: For further information or any questions you may have, please contact:
Megan Harris, Stakeholder Engagement Lead –
Sustainable Fuels

feedback@simplybluegroup.com

It celebrates fun of bygone era



Terri MacDonald and Theresa Yzerman (top left) accept Lanny Boyer's nickel to play the penny drop game. Willow Boyer (left), Joy Dort and Dave Nadler judge the delicious fare in the pie-making contest, while Jerry Haines (above) works at the popular penny pitch booth. Angelina Jack



**Simply Blue
Group**

JOIN US FOR OUR

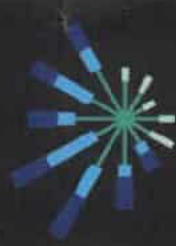
PROJECT LAUNCH

SATURDAY, SEPTEMBER 14
11:00AM - 2:00PM

Join us to learn more about Nova Scotia's new sustainable fuels project and to meet our team. Bring the whole family for food, fun activities and prizes. We look forward to seeing you there!

Location: Goldboro Interpretive Centre (12881 Highway 316)

Questions? For further information or any questions you may have, please contact:
Megan Harris, Stakeholder Engagement Lead – Sustainable Fuels at
feedback@simplybluegroup.com



Simply Blue Group

Community Project Launch
Saturday, September 14, 2024, 11am-2pm
Goldboro Interpretive Centre

Feedback Form

Thank you for attending today's project launch – we hope you found it useful. Please take the time to provide feedback. Input will be compiled and summarized for consideration by the project team.

Feedback forms may be:

Dropped: in the box provided or handed to one of our staff at today's event

Mailed: Simply Blue Group ATTN: Megan Harris
1701 Hollis Street, Suite 800
Halifax, NS B3J 3M8

Emailed: feedback@simplybluegroup.com

Why did you come to today's project launch?

What information were you hoping to gather?

Has your understanding of the project improved because of this event?

☒ Yes ☐ No

Do you think the project will have a positive impact on the community?

☒ Yes ☐ No

Why?

As locals, you know this area better than anyone. Is there anything you think we should know from an ecological, cultural or economic perspective? Please provide key information below.

How far away do you live from the project?

☐ I would consider myself a neighbour

☐ Within 1 kilometre

☐ Within 5 kilometres

☒ Over 5 kilometres

Please indicate your level of agreement with each of the following statements:

The information presented today helped me gain an understanding of the project.

☐ Strongly Agree

☒ Agree

☐ Disagree

☐ Strongly Disagree

The information was presented in a format that was easy to understand.

☐ Strongly Agree

☒ Agree

☐ Disagree

☐ Strongly Disagree

Staff were able to adequately answer my questions.

☐ Strongly Agree

☒ Agree

☐ Disagree

☐ Strongly Disagree

How did you hear about today's event?

☐ Postcard in mailbox

☐ Word of mouth

☐ Newspaper

☒ Radio

☐ Other (please specify): _____

Would you be interested in attending future events about the project?

☒ Yes

☐ No

What would you like to see at future events? What other information would you be interested in learning about this project?

OPTIONAL SECTION

If you wish to be added to our distribution list to receive information about the project, please clearly print your email address below. Contact information provided voluntarily to Simply Blue Group will be used solely to distribute information to you. Your contact information will not be sold or used for other purposes. You may "unsubscribe" from the distribution list at any time by emailing your request to feedback@simplybluegroup.com or by phoning (902) 499-6055

Email Address: _____



Simply Blue Group

Community Project Launch
Saturday, September 14, 2024, 11am-2pm
Goldboro Interpretive Centre

Feedback Form

Thank you for attending today's project launch – we hope you found it useful. Please take the time to provide feedback. Input will be compiled and summarized for consideration by the project team.

Feedback forms may be:

Dropped: in the box provided or handed to one of our staff at today's event

Mailed: Simply Blue Group ATTN: Megan Harris
1701 Hollis Street, Suite 800
Halifax, NS B3J 3M8

Emailed: feedback@simplybluegroup.com

Why did you come to today's project launch?

To learn some information

What information were you hoping to gather?

Where etc.

Has your understanding of the project improved because of this event?

☒ Yes ☐ No

Do you think the project will have a positive impact on the community?

☒ Yes ☐ No

Why?

For employment & development

As locals, you know this area better than anyone. Is there anything you think we should know from an ecological, cultural or economic perspective? Please provide key information below.

How far away do you live from the project?

☐ I would consider myself a neighbour

☐ Within 1 kilometre

☐ Within 5 kilometres

☒ Over 5 kilometres

Please indicate your level of agreement with each of the following statements:

The information presented today helped me gain an understanding of the project.

☐ Strongly Agree

☒ Agree

☐ Disagree

☐ Strongly Disagree

The information was presented in a format that was easy to understand.

☐ Strongly Agree

☒ Agree

☐ Disagree

☐ Strongly Disagree

Staff were able to adequately answer my questions.

☐ Strongly Agree

☒ Agree

☐ Disagree

☐ Strongly Disagree

How did you hear about today's event?

☐ Postcard in mailbox

☐ Word of mouth

☐ Newspaper

☐ Radio

☐ Other (please specify): Paper delivered to door.

Would you be interested in attending future events about the project?

☒ Yes

☐ No if I'm here.

What would you like to see at future events? What other information would you be interested in learning about this project?

More information that I don't know. General & included.

OPTIONAL SECTION

If you wish to be added to our distribution list to receive information about the project, please clearly print your email address below. Contact information provided voluntarily to Simply Blue Group will be used solely to distribute information to you. Your contact information will not be sold or used for other purposes. You may "unsubscribe" from the distribution list at any time by emailing your request to feedback@simplybluegroup.com or by phoning (902) 499-6055

Email Address: _____



Simply Blue Group

Community Project Launch
Saturday, September 14, 2024, 11am-2pm
Goldboro Interpretive Centre

Feedback Form

Thank you for attending today's project launch – we hope you found it useful. Please take the time to provide feedback. Input will be compiled and summarized for consideration by the project team.

Feedback forms may be:

Dropped: in the box provided or handed to one of our staff at today's event

Mailed: Simply Blue Group ATTN: Megan Harris
1701 Hollis Street, Suite 800
Halifax, NS B3J 3M8

Emailed: feedback@simplybluegroup.com

Why did you come to today's project launch?

To get more information on project

What information were you hoping to gather?

Facts about project instead of many rumors

Has your understanding of the project improved because of this event?

☒ Yes

☐ No

Do you think the project will have a positive impact on the community?

☒ Yes

☐ No

Why?

employment, new population

As locals, you know this area better than anyone. Is there anything you think we should know from an ecological, cultural or economic perspective? Please provide key information below.

How far away do you live from the project?

- ☐ I would consider myself a neighbour ☐ Within 1 kilometre
☐ Within 5 kilometres ☒ Over 5 kilometres

Please indicate your level of agreement with each of the following statements:

The information presented today helped me gain an understanding of the project.

- ☐ Strongly Agree ☒ Agree ☐ Disagree ☐ Strongly Disagree

The information was presented in a format that was easy to understand.

- ☐ Strongly Agree ☒ Agree ☐ Disagree ☐ Strongly Disagree

Staff were able to adequately answer my questions.

- ☐ Strongly Agree ☒ Agree ☐ Disagree ☐ Strongly Disagree

How did you hear about today's event?

- ☐ Postcard in mailbox ☐ Word of mouth ☐ Newspaper ☐ Radio
☒ Other (please specify): facebook

Would you be interested in attending future events about the project?

- ☒ Yes ☐ No

What would you like to see at future events? What other information would you be interested in learning about this project?

OPTIONAL SECTION

If you wish to be added to our distribution list to receive information about the project, please clearly print your email address below. Contact information provided voluntarily to Simply Blue Group will be used solely to distribute information to you. Your contact information will not be sold or used for other purposes. You may "unsubscribe" from the distribution list at any time by emailing your request to feedback@simplybluegroup.com or by phoning (902) 499-6055

Email Address:



Simply Blue Group

Community Project Launch
Saturday, September 14, 2024, 11am-2pm
Goldboro Interpretive Centre

Feedback Form

Thank you for attending today's project launch – we hope you found it useful. Please take the time to provide feedback. Input will be compiled and summarized for consideration by the project team.

Feedback forms may be:

Dropped: in the box provided or handed to one of our staff at today's event

Mailed: Simply Blue Group ATTN: Megan Harris
1701 Hollis Street, Suite 800
Halifax, NS B3J 3M8

Emailed: feedback@simplybluegroup.com

Why did you come to today's project launch?

To see first hand the plan for development
of the project

What information were you hoping to gather?

Overview of the construction & process

Has your understanding of the project improved because of this event?

☒ Yes

☐ No

Do you think the project will have a positive impact on the community?

☒ Yes

☐ No

Why?

direct economic development & enhancing
region's attractiveness for related industries.

As locals, you know this area better than anyone. Is there anything you think we should know from an ecological, cultural or economic perspective? Please provide key information below.

Sable Off shore energy encountered challenges in construction when drilling for placement of columns they encountered quartz seams that re directed their drills.

How far away do you live from the project?

☐

I would consider myself a neighbour

☐

Within 1 kilometre

☐

Within 5 kilometres

☒

Over 5 kilometres

Please indicate your level of agreement with each of the following statements:

The information presented today helped me gain an understanding of the project.

☒

Strongly Agree

☐

Agree

☐

Disagree

☐

Strongly Disagree

The information was presented in a format that was easy to understand.

☒

Strongly Agree

☐

Agree

☐

Disagree

☐

Strongly Disagree

Staff were able to adequately answer my questions.

☒

Strongly Agree

☐

Agree

☐

Disagree

☐

Strongly Disagree

How did you hear about today's event?

☐

Postcard in mailbox

☒

Word of mouth

☐

Newspaper

☒

Radio

☐

Other (please specify):

Would you be interested in attending future events about the project?

☒

Yes

☐

No

What would you like to see at future events? What other information would you be interested in learning about this project?

Information on trades requirements & business opportunities for individuals that may be interested

OPTIONAL SECTION

If you wish to be added to our distribution list to receive information about the project, please clearly print your email address below. Contact information provided voluntarily to Simply Blue Group will be used solely to distribute information to you. Your contact information will not be sold or used for other purposes. You may "unsubscribe" from the distribution list at any time by emailing your request to feedback@simplybluegroup.com or by phoning (902) 499-6055

Email Address: _____



Simply Blue Group

Community Project Launch
Saturday, September 14, 2024, 11am-2pm
Goldboro Interpretive Centre

Feedback Form

Thank you for attending today's project launch – we hope you found it useful. Please take the time to provide feedback. Input will be compiled and summarized for consideration by the project team.

Feedback forms may be:

Dropped: in the box provided or handed to one of our staff at today's event

Mailed: Simply Blue Group ATTN: Megan Harris
1701 Hollis Street, Suite 800
Halifax, NS B3J 3M8

Emailed: feedback@simplybluegroup.com

Why did you come to today's project launch?

I received information on project

What information were you hoping to gather?

all info as I knew nothing

Has your understanding of the project improved because of this event?

☒ Yes ☐ No

Do you think the project will have a positive impact on the community?

☒ Yes ☐ No

Why?

Not sure.

As locals, you know this area better than anyone. Is there anything you think we should know from an ecological, cultural or economic perspective? Please provide key information below.

How far away do you live from the project?

☒ I would consider myself a neighbour

☐ Within 1 kilometre

☒ Within 5 kilometres

☐ Over 5 kilometres

Please indicate your level of agreement with each of the following statements:

The information presented today helped me gain an understanding of the project.

☒ Strongly Agree ☐ Agree ☐ Disagree ☐ Strongly Disagree

The information was presented in a format that was easy to understand.

☒ Strongly Agree ☐ Agree ☐ Disagree ☐ Strongly Disagree

Staff were able to adequately answer my questions.

☒ Strongly Agree ☐ Agree ☐ Disagree ☐ Strongly Disagree

How did you hear about today's event?

☒ Postcard in mailbox ☐ Word of mouth ☐ Newspaper ☐ Radio

☐ Other (please specify): _____

Would you be interested in attending future events about the project?

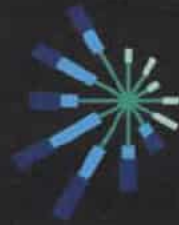
☒ Yes ☐ No

What would you like to see at future events? What other information would you be interested in learning about this project?

OPTIONAL SECTION

If you wish to be added to our distribution list to receive information about the project, please clearly print your email address below. Contact information provided voluntarily to Simply Blue Group will be used solely to distribute information to you. Your contact information will not be sold or used for other purposes. You may "unsubscribe" from the distribution list at any time by emailing your request to feedback@simplybluegroup.com or by phoning (902) 499-6055

Email Address: _____



Simply Blue Group

Community Project Launch
Saturday, September 14, 2024, 11am-2pm
Goldboro Interpretive Centre

Feedback Form

Thank you for attending today's project launch – we hope you found it useful. Please take the time to provide feedback. Input will be compiled and summarized for consideration by the project team.

Feedback forms may be:

Dropped: in the box provided or handed to one of our staff at today's event

Mailed: Simply Blue Group ATTN: Megan Harris
1701 Hollis Street, Suite 800
Halifax, NS B3J 3M8

Emailed: feedback@simplybluegroup.com

Why did you come to today's project launch?

for info

What information were you hoping to gather?

what would happen to Redundant Wind
TURBINES

Has your understanding of the project improved because of this event?

☒ Yes

☐ No

Do you think the project will have a positive impact on the community?

☒ Yes

☐ No

Why?

This area need jobs and commercial
projects to bring younger people in.

As locals, you know this area better than anyone. Is there anything you think we should know from an ecological, cultural or economic perspective? Please provide key information below.

How far away do you live from the project?

☒

I would consider myself a neighbour

☐

Within 1 kilometre

☒

Within 5 kilometres

☐

Over 5 kilometres

Please indicate your level of agreement with each of the following statements:

The information presented today helped me gain an understanding of the project.

☐

Strongly Agree

☒

Agree

☐

Disagree

☐

Strongly Disagree

The information was presented in a format that was easy to understand.

☐

Strongly Agree

☒

Agree

☐

Disagree

☐

Strongly Disagree

Staff were able to adequately answer my questions.

☐

Strongly Agree

☒

Agree

☐

Disagree

☐

Strongly Disagree

How did you hear about today's event?

☐

Postcard in mailbox

☒

Word of mouth

☐

Newspaper

☐

Radio

☐

Other (please specify):

Would you be interested in attending future events about the project?

☒

Yes

☐

No

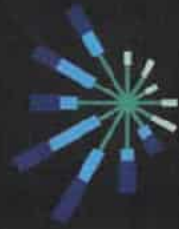
What would you like to see at future events? What other information would you be interested in learning about this project?

Hearing that it is going ahead.

OPTIONAL SECTION

If you wish to be added to our distribution list to receive information about the project, please clearly print your email address below. Contact information provided voluntarily to Simply Blue Group will be used solely to distribute information to you. Your contact information will not be sold or used for other purposes. You may "unsubscribe" from the distribution list at any time by emailing your request to feedback@simplybluegroup.com or by phoning (902) 499-6055

Email Address:



Simply Blue Group

Community Project Launch
Saturday, September 14, 2024, 11am-2pm
Goldboro Interpretive Centre

Feedback Form

Thank you for attending today's project launch – we hope you found it useful. Please take the time to provide feedback. Input will be compiled and summarized for consideration by the project team.

Feedback forms may be:

Dropped: in the box provided or handed to one of our staff at today's event

Mailed: Simply Blue Group ATTN: Megan Harris
1701 Hollis Street, Suite 800
Halifax, NS B3J 3M8

Emailed: feedback@simplybluegroup.com

Why did you come to today's project launch?

To See for Myself what your project is

What information were you hoping to gather?

NO

Has your understanding of the project improved because of this event?

☐

Yes

☒

No

Do you think the project will have a positive impact on the community?

☐

Yes

☒

No

Why?

THE ENERGY IN QUESTION WILL BE SHIPPED OFF SHORE

AND NOT USED FOR POSITIVE USE

As locals, you know this area better than anyone. Is there anything you think we should know from an ecological, cultural or economic perspective? Please provide key information below.

How far away do you live from the project?

☐ I would consider myself a neighbour

☐ Within 1 kilometre

☐ Within 5 kilometres

☐ Over 5 kilometres *unknown*

Please indicate your level of agreement with each of the following statements:

The information presented today helped me gain an understanding of the project.

☐ Strongly Agree

☐ Agree

☐ Disagree

☒ Strongly Disagree

The information was presented in a format that was easy to understand.

☐ Strongly Agree

☒ Agree

☐ Disagree

☐ Strongly Disagree

Staff were able to adequately answer my questions.

☐ Strongly Agree

☐ Agree

☐ Disagree

☐ Strongly Disagree

How did you hear about today's event?

☒ Postcard in mailbox

☐ Word of mouth

☐ Newspaper

☒ Radio

☐ Other (please specify): _____

Would you be interested in attending future events about the project?

☐ Yes

☒ No

What would you like to see at future events? What other information would you be interested in learning about this project?

OPTIONAL SECTION

If you wish to be added to our distribution list to receive information about the project, please clearly print your email address below. Contact information provided voluntarily to Simply Blue Group will be used solely to distribute information to you. Your contact information will not be sold or used for other purposes. You may "unsubscribe" from the distribution list at any time by emailing your request to feedback@simplybluegroup.com or by phoning (902) 499-6055

Email Address: _____



Simply Blue Group

Community Project Launch
Saturday, September 14, 2024, 11am-2pm
Goldboro Interpretive Centre

Feedback Form

Thank you for attending today's project launch – we hope you found it useful. Please take the time to provide feedback. Input will be compiled and summarized for consideration by the project team.

Feedback forms may be:

Dropped: in the box provided or handed to one of our staff at today's event

Mailed: Simply Blue Group ATTN: Megan Harris
1701 Hollis Street, Suite 800
Halifax, NS B3J 3M8

Emailed: feedback@simplybluegroup.com

Why did you come to today's project launch?

Curiosity about employment opportunities

What information were you hoping to gather?

Employment and environmental impact

Has your understanding of the project improved because of this event?

☒ Yes

☐ No

Do you think the project will have a positive impact on the community?

☒ Yes

☐ No

Why?

This area needs development

As locals, you know this area better than anyone. Is there anything you think we should know from an ecological, cultural or economic perspective? Please provide key information below.

Its a very small community and slow
to change, Keep up social engagement

How far away do you live from the project?

☐ I would consider myself a neighbour

☐ Within 1 kilometre

☐ Within 5 kilometres

☒ Over 5 kilometres

Please indicate your level of agreement with each of the following statements:

The information presented today helped me gain an understanding of the project.

☐ Strongly Agree

☒ Agree

☐ Disagree

☐ Strongly Disagree

The information was presented in a format that was easy to understand.

☐ Strongly Agree

☒ Agree

☐ Disagree

☐ Strongly Disagree

Staff were able to adequately answer my questions.

☒ Strongly Agree

☐ Agree

☐ Disagree

☐ Strongly Disagree

How did you hear about today's event?

☐ Postcard in mailbox

☒ Word of mouth

☐ Newspaper

☐ Radio

☐ Other (please specify): _____

Would you be interested in attending future events about the project?

☒ Yes

☐ No

What would you like to see at future events? What other information would you be interested in learning about this project?

Anything about employment and environment

OPTIONAL SECTION

If you wish to be added to our distribution list to receive information about the project, please clearly print your email address below. Contact information provided voluntarily to Simply Blue Group will be used solely to distribute information to you. Your contact information will not be sold or used for other purposes. You may "unsubscribe" from the distribution list at any time by emailing your request to feedback@simplybluegroup.com or by phoning (902) 499-6055

Email Address: _____



Simply Blue Group

Community Project Launch
Saturday, September 14, 2024, 11am-2pm
Goldboro Interpretive Centre

Feedback Form

Thank you for attending today's project launch – we hope you found it useful. Please take the time to provide feedback. Input will be compiled and summarized for consideration by the project team.

Feedback forms may be:

Dropped: in the box provided or handed to one of our staff at today's event

Mailed: Simply Blue Group ATTN: Megan Harris
1701 Hollis Street, Suite 800
Halifax, NS B3J 3M8

Emailed: feedback@simplybluegroup.com

Why did you come to today's project launch?

gather accurate information

What information were you hoping to gather?

Location, size, impact of wind farms

Has your understanding of the project improved because of this event?

☒ Yes

☐ No

Do you think the project will have a positive impact on the community?

☒ Yes

☐ No

Why?

Jobs, opportunity

As locals, you know this area better than anyone. Is there anything you think we should know from an ecological, cultural or economic perspective? Please provide key information below.

How far away do you live from the project?

☐ I would consider myself a neighbour

☐ Within 1 kilometre

☐ Within 5 kilometres

☒ Over 5 kilometres

Please indicate your level of agreement with each of the following statements:

The information presented today helped me gain an understanding of the project.

☐ Strongly Agree

☒ Agree

☐ Disagree

☐ Strongly Disagree

The information was presented in a format that was easy to understand.

☐ Strongly Agree

☒ Agree

☐ Disagree

☐ Strongly Disagree

Staff were able to adequately answer my questions.

☒ Strongly Agree

☐ Agree

☐ Disagree

☐ Strongly Disagree

How did you hear about today's event?

☐ Postcard in mailbox

☐ Word of mouth

☐ Newspaper

☐ Radio

☒ Other (please specify): social media

Would you be interested in attending future events about the project?

☒ Yes

☐ No

What would you like to see at future events? What other information would you be interested in learning about this project?

Local community centres?

OPTIONAL SECTION

If you wish to be added to our distribution list to receive information about the project, please clearly print your email address below. Contact information provided voluntarily to Simply Blue Group will be used solely to distribute information to you. Your contact information will not be sold or used for other purposes. You may "unsubscribe" from the distribution list at any time by emailing your request to feedback@simplybluegroup.com or by phoning (902) 499-6055

Email Address: _____



Simply Blue Group

Community Project Launch

Saturday, September 14, 2024, 11am-2pm
Goldboro Interpretive Centre

Feedback Form

Thank you for attending today's project launch – we hope you found it useful. Please take the time to provide feedback. Input will be compiled and summarized for consideration by the project team.

Feedback forms may be:

Dropped: in the box provided or handed to one of our staff at today's event

Mailed: Simply Blue Group ATTN: Megan Harris
1701 Hollis Street, Suite 800
Halifax, NS B3J 3M8

Emailed: feedback@simplybluegroup.com

Why did you come to today's project launch?

To find out info on the launch

What information were you hoping to gather?

What and where things are
happening

Has your understanding of the project improved because of this event?



Yes



No

Do you think the project will have a positive impact on the community?



Yes



No

Why?

Sops, etc.

As locals, you know this area better than anyone. Is there anything you think we should know from an ecological, cultural or economic perspective? Please provide key information below.

How far away do you live from the project?

☐ I would consider myself a neighbour

☐ Within 1 kilometre

☒ Within 5 kilometres

☐ Over 5 kilometres

Please indicate your level of agreement with each of the following statements:

The information presented today helped me gain an understanding of the project.

☒ Strongly Agree

☐ Agree

☐ Disagree

☐ Strongly Disagree

The information was presented in a format that was easy to understand.

☒ Strongly Agree

☐ Agree

☐ Disagree

☐ Strongly Disagree

Staff were able to adequately answer my questions.

☒ Strongly Agree

☐ Agree

☐ Disagree

☐ Strongly Disagree

How did you hear about today's event?

☐ Postcard in mailbox

☐ Word of mouth

☐ Newspaper

☐ Radio

☒ Other (please specify): Facebook + Flyer brought to house

Would you be interested in attending future events about the project?

☒ Yes

☐ No

What would you like to see at future events? What other information would you be interested in learning about this project?

OPTIONAL SECTION

If you wish to be added to our distribution list to receive information about the project, please clearly print your email address below. Contact information provided voluntarily to Simply Blue Group will be used solely to distribute information to you. Your contact information will not be sold or used for other purposes. You may "unsubscribe" from the distribution list at any time by emailing your request to feedback@simplybluegroup.com or by phoning (902) 499-6055

Email Address: _____

[Redacted email address]



Simply Blue Group

Community Project Launch
Saturday, September 14, 2024, 11am-2pm
Goldboro Interpretive Centre

Feedback Form

Thank you for attending today's project launch – we hope you found it useful. Please take the time to provide feedback. Input will be compiled and summarized for consideration by the project team.

Feedback forms may be:

Dropped: in the box provided or handed to one of our staff at today's event

Mailed: Simply Blue Group ATTN: Megan Harris
1701 Hollis Street, Suite 800
Halifax, NS B3J 3M8

Emailed: feedback@simplybluegroup.com

Why did you come to today's project launch?

Input

What information were you hoping to gather?

Biomass

Has your understanding of the project improved because of this event?

☒ Yes

☐ No

Do you think the project will have a positive impact on the community?

☒ Yes

☐ No

Why?

As locals, you know this area better than anyone. Is there anything you think we should know from an ecological, cultural or economic perspective? Please provide key information below.

How far away do you live from the project?

- | | |
|--|---|
| <input type="checkbox"/> I would consider myself a neighbour | <input type="checkbox"/> Within 1 kilometre |
| <input type="checkbox"/> Within 5 kilometres | <input checked="" type="checkbox"/> Over 5 kilometres |

Please indicate your level of agreement with each of the following statements:

The information presented today helped me gain an understanding of the project.

- | | | | |
|---|---|-----------------------------------|--|
| <input type="checkbox"/> Strongly Agree | <input checked="" type="checkbox"/> Agree | <input type="checkbox"/> Disagree | <input type="checkbox"/> Strongly Disagree |
|---|---|-----------------------------------|--|

The information was presented in a format that was easy to understand.

- | | | | |
|---|---|-----------------------------------|--|
| <input type="checkbox"/> Strongly Agree | <input checked="" type="checkbox"/> Agree | <input type="checkbox"/> Disagree | <input type="checkbox"/> Strongly Disagree |
|---|---|-----------------------------------|--|

Staff were able to adequately answer my questions.

- | | | | |
|---|---|-----------------------------------|--|
| <input type="checkbox"/> Strongly Agree | <input checked="" type="checkbox"/> Agree | <input type="checkbox"/> Disagree | <input type="checkbox"/> Strongly Disagree |
|---|---|-----------------------------------|--|

How did you hear about today's event?

- | | | | |
|---|--|------------------------------------|--------------------------------|
| <input checked="" type="checkbox"/> Postcard in mailbox | <input type="checkbox"/> Word of mouth | <input type="checkbox"/> Newspaper | <input type="checkbox"/> Radio |
| <input type="checkbox"/> Other (please specify): _____ | | | |

Would you be interested in attending future events about the project?

- | | |
|---|-----------------------------|
| <input checked="" type="checkbox"/> Yes | <input type="checkbox"/> No |
|---|-----------------------------|

What would you like to see at future events? What other information would you be interested in learning about this project?

OPTIONAL SECTION

If you wish to be added to our distribution list to receive information about the project, please clearly print your email address below. Contact information provided voluntarily to Simply Blue Group will be used solely to distribute information to you. Your contact information will not be sold or used for other purposes. You may "unsubscribe" from the distribution list at any time by emailing your request to feedback@simplybluegroup.com or by phoning (902) 499-6055

Email Address: _____



Simply Blue Group

Community Project Launch
Saturday, September 14, 2024, 11am-2pm
Goldboro Interpretive Centre

Feedback Form

Thank you for attending today's project launch – we hope you found it useful. Please take the time to provide feedback. Input will be compiled and summarized for consideration by the project team.

Feedback forms may be:

Dropped: in the box provided or handed to one of our staff at today's event

Mailed: Simply Blue Group ATTN: Megan Harris
1701 Hollis Street, Suite 800
Halifax, NS B3J 3M8

Emailed: feedback@simplybluegroup.com

Why did you come to today's project launch?

To learn more about the project

What information were you hoping to gather?

Look for info about offsetting project (funds)
I am president of New Harbour River Restoration Association

Has your understanding of the project improved because of this event?

☒ Yes ☐ No

Do you think the project will have a positive impact on the community?

☐ Yes ☐ No

Why?

I need to learn more about it
before a summer.

As locals, you know this area better than anyone. Is there anything you think we should know from an ecological, cultural or economic perspective? Please provide key information below.

How far away do you live from the project?

- ☒ I would consider myself a neighbour ☐ Within 1 kilometre
☐ Within 5 kilometres ☐ Over 5 kilometres

Please indicate your level of agreement with each of the following statements:

The information presented today helped me gain an understanding of the project.

- ☒ Strongly Agree ☐ Agree ☐ Disagree ☐ Strongly Disagree

The information was presented in a format that was easy to understand.

- ☒ Strongly Agree ☐ Agree ☐ Disagree ☐ Strongly Disagree

Staff were able to adequately answer my questions.

- ☐ Strongly Agree ☒ Agree ☐ Disagree ☐ Strongly Disagree

How did you hear about today's event?

- ☐ Postcard in mailbox ☒ Word of mouth ☐ Newspaper ☐ Radio
☐ Other (please specify): _____

Would you be interested in attending future events about the project?

- ☒ Yes ☐ No

What would you like to see at future events? What other information would you be interested in learning about this project?

What will be done to offset the environmental
Damage.

OPTIONAL SECTION

If you wish to be added to our distribution list to receive information about the project, please clearly print your email address below. Contact information provided voluntarily to Simply Blue Group will be used solely to distribute information to you. Your contact information will not be sold or used for other purposes. You may "unsubscribe" from the distribution list at any time by emailing your request to feedback@simplybluegroup.com or by phoning (902) 499-6055

Email Address: _____



Simply Blue Group

Community Project Launch
Saturday, September 14, 2024, 11am-2pm
Goldboro Interpretive Centre

Feedback Form

Thank you for attending today's project launch – we hope you found it useful. Please take the time to provide feedback. Input will be compiled and summarized for consideration by the project team.

Feedback forms may be:

Dropped: in the box provided or handed to one of our staff at today's event

Mailed: Simply Blue Group ATTN: Megan Harris
1701 Hollis Street, Suite 800
Halifax, NS B3J 3M8

Emailed: feedback@simplybluegroup.com

Why did you come to today's project launch?

To learn more about the project.

What information were you hoping to gather?

Understanding of the infrastructure.

Has your understanding of the project improved because of this event?

☒ Yes

☐ No

Do you think the project will have a positive impact on the community?

☒ Yes

☐ No

Why?

Produces a product that the
world needs, using available resources in N.S.

As locals, you know this area better than anyone. Is there anything you think we should know from an ecological, cultural or economic perspective? Please provide key information below.

N/A

How far away do you live from the project?

☐ I would consider myself a neighbour

☐ Within 1 kilometre

☐ Within 5 kilometres

☒ Over 5 kilometres

Please indicate your level of agreement with each of the following statements:

The information presented today helped me gain an understanding of the project.

☒ Strongly Agree

☐ Agree

☐ Disagree

☐ Strongly Disagree

The information was presented in a format that was easy to understand.

☒ Strongly Agree

☐ Agree

☐ Disagree

☐ Strongly Disagree

Staff were able to adequately answer my questions.

☒ Strongly Agree

☐ Agree

☐ Disagree

☐ Strongly Disagree

How did you hear about today's event?

☐ Postcard in mailbox

☒ Word of mouth

☐ Newspaper

☐ Radio

☐ Other (please specify): _____

Would you be interested in attending future events about the project?

☒ Yes

☐ No

What would you like to see at future events? What other information would you be interested in learning about this project?

OPTIONAL SECTION

If you wish to be added to our distribution list to receive information about the project, please clearly print your email address below. Contact information provided voluntarily to Simply Blue Group will be used solely to distribute information to you. Your contact information will not be sold or used for other purposes. You may "unsubscribe" from the distribution list at any time by emailing your request to feedback@simplybluegroup.com or by phoning (902) 499-6055

Email Address: _____



Simply Blue Group

Community Project Launch

Saturday, September 14, 2024, 11am-2pm

Goldboro Interpretive Centre

Feedback Form

Thank you for attending today's project launch – we hope you found it useful. Please take the time to provide feedback. Input will be compiled and summarized for consideration by the project team.

Feedback forms may be:

Dropped: in the box provided or handed to one of our staff at today's event

Mailed: Simply Blue Group ATTN: Megan Harris

1701 Hollis Street, Suite 800

Halifax, NS B3J 3M8

Emailed: feedback@simplybluegroup.com

Why did you come to today's project launch?

TO LEARN MORE ABOUT THE PROJECT

What information were you hoping to gather?

HOW THE BASIC PROCESSES WORK

Has your understanding of the project improved because of this event?

☒ Yes

☐ No

Do you think the project will have a positive impact on the community?

☒ Yes

☐ No

Why?

IT IS NEEDED ASAP & WILL SUPPLY
JOBS

As locals, you know this area better than anyone. Is there anything you think we should know from an ecological, cultural or economic perspective? Please provide key information below.

How far away do you live from the project?

- | | |
|---|---|
| <input checked="" type="checkbox"/> I would consider myself a neighbour | <input type="checkbox"/> Within 1 kilometre |
| <input type="checkbox"/> Within 5 kilometres | <input type="checkbox"/> Over 5 kilometres |

Please indicate your level of agreement with each of the following statements:

The information presented today helped me gain an understanding of the project.

- | | | | |
|--|--------------------------------|-----------------------------------|--|
| <input checked="" type="checkbox"/> Strongly Agree | <input type="checkbox"/> Agree | <input type="checkbox"/> Disagree | <input type="checkbox"/> Strongly Disagree |
|--|--------------------------------|-----------------------------------|--|

The information was presented in a format that was easy to understand.

- | | | | |
|--|--------------------------------|-----------------------------------|--|
| <input checked="" type="checkbox"/> Strongly Agree | <input type="checkbox"/> Agree | <input type="checkbox"/> Disagree | <input type="checkbox"/> Strongly Disagree |
|--|--------------------------------|-----------------------------------|--|

Staff were able to adequately answer my questions.

- | | | | |
|--|--------------------------------|-----------------------------------|--|
| <input checked="" type="checkbox"/> Strongly Agree | <input type="checkbox"/> Agree | <input type="checkbox"/> Disagree | <input type="checkbox"/> Strongly Disagree |
|--|--------------------------------|-----------------------------------|--|

How did you hear about today's event?

- | | | | |
|--|---|------------------------------------|--------------------------------|
| <input type="checkbox"/> Postcard in mailbox | <input checked="" type="checkbox"/> Word of mouth | <input type="checkbox"/> Newspaper | <input type="checkbox"/> Radio |
| <input type="checkbox"/> Other (please specify): _____ | | | |

Would you be interested in attending future events about the project?

- | | |
|---|-----------------------------|
| <input checked="" type="checkbox"/> Yes | <input type="checkbox"/> No |
|---|-----------------------------|

What would you like to see at future events? What other information would you be interested in learning about this project?

OPTIONAL SECTION

If you wish to be added to our distribution list to receive information about the project, please clearly print your email address below. Contact information provided voluntarily to Simply Blue Group will be used solely to distribute information to you. Your contact information will not be sold or used for other purposes. You may "unsubscribe" from the distribution list at any time by emailing your request to feedback@simplybluegroup.com or by phoning (902) 499-6055

Email Address: _____



Simply Blue Group

Community Project Launch
Saturday, September 14, 2024, 11am-2pm
Goldboro Interpretive Centre

Feedback Form

Thank you for attending today's project launch – we hope you found it useful. Please take the time to provide feedback. Input will be compiled and summarized for consideration by the project team.

Feedback forms may be:

Dropped: in the box provided or handed to one of our staff at today's event

Mailed: Simply Blue Group ATTN: Megan Harris
1701 Hollis Street, Suite 800
Halifax, NS B3J 3M8

Emailed: feedback@simplybluegroup.com

Why did you come to today's project launch?

INFORMATION

What information were you hoping to gather?

Has your understanding of the project improved because of this event?

☐ Yes

☒ No

Do you think the project will have a positive impact on the community?

☐ Yes

☒ No

Why?

BIO MASS WOGS NOT WORK

As locals, you know this area better than anyone. Is there anything you think we should know from an ecological, cultural or economic perspective? Please provide key information below.

How far away do you live from the project?

- | | |
|--|---|
| <input type="checkbox"/> I would consider myself a neighbour | <input type="checkbox"/> Within 1 kilometre |
| <input type="checkbox"/> Within 5 kilometres | <input checked="" type="checkbox"/> Over 5 kilometres |

Please indicate your level of agreement with each of the following statements:

The information presented today helped me gain an understanding of the project.

- | | | | |
|---|--------------------------------|--|--|
| <input type="checkbox"/> Strongly Agree | <input type="checkbox"/> Agree | <input checked="" type="checkbox"/> Disagree | <input type="checkbox"/> Strongly Disagree |
|---|--------------------------------|--|--|

The information was presented in a format that was easy to understand.

- | | | | |
|---|--------------------------------|--|--|
| <input type="checkbox"/> Strongly Agree | <input type="checkbox"/> Agree | <input checked="" type="checkbox"/> Disagree | <input type="checkbox"/> Strongly Disagree |
|---|--------------------------------|--|--|

Staff were able to adequately answer my questions.

- | | | | |
|---|--------------------------------|--|--|
| <input type="checkbox"/> Strongly Agree | <input type="checkbox"/> Agree | <input checked="" type="checkbox"/> Disagree | <input type="checkbox"/> Strongly Disagree |
|---|--------------------------------|--|--|

How did you hear about today's event?

- | | | | |
|---|--|------------------------------------|--------------------------------|
| <input checked="" type="checkbox"/> Postcard in mailbox | <input type="checkbox"/> Word of mouth | <input type="checkbox"/> Newspaper | <input type="checkbox"/> Radio |
| <input type="checkbox"/> Other (please specify): _____ | | | |

Would you be interested in attending future events about the project?

- | | |
|---|-----------------------------|
| <input checked="" type="checkbox"/> Yes | <input type="checkbox"/> No |
|---|-----------------------------|

What would you like to see at future events? What other information would you be interested in learning about this project?

OPTIONAL SECTION

If you wish to be added to our distribution list to receive information about the project, please clearly print your email address below. Contact information provided voluntarily to Simply Blue Group will be used solely to distribute information to you. Your contact information will not be sold or used for other purposes. You may "unsubscribe" from the distribution list at any time by emailing your request to feedback@simplybluegroup.com or by phoning (902) 499-6055

Email Address: _____



Simply Blue Group

Community Project Launch
Saturday, September 14, 2024, 11am-2pm
Goldboro Interpretive Centre

Feedback Form

Thank you for attending today's project launch – we hope you found it useful. Please take the time to provide feedback. Input will be compiled and summarized for consideration by the project team.

Feedback forms may be:

Dropped: in the box provided or handed to one of our staff at today's event

Mailed: Simply Blue Group ATTN: Megan Harris
1701 Hollis Street, Suite 800
Halifax, NS B3J 3M8

Emailed: feedback@simplybluegroup.com

Why did you come to today's project launch?

Looking to see development of this project and job creation
what I have seen today as well as your www. is very positive.

What information were you hoping to gather?

job creation
how it will affect my property

Has your understanding of the project improved because of this event?

☒ Yes ☒ No

Do you think the project will have a positive impact on the community?

☒ Yes ☐ No

Why?

job creation

As locals, you know this area better than anyone. Is there anything you think we should know from an ecological, cultural or economic perspective? Please provide key information below.

How far away do you live from the project?

- ☐ I would consider myself a neighbour ☐ Within 1 kilometre
☒ Within 5 kilometres ☐ Over 5 kilometres

Please indicate your level of agreement with each of the following statements:

The information presented today helped me gain an understanding of the project.

- ☒ Strongly Agree ☐ Agree ☐ Disagree ☐ Strongly Disagree

The information was presented in a format that was easy to understand.

- ☐ Strongly Agree ☒ Agree ☐ Disagree ☐ Strongly Disagree

Staff were able to adequately answer my questions.

- ☒ Strongly Agree ☐ Agree ☐ Disagree ☐ Strongly Disagree

How did you hear about today's event?

- ☒ Postcard in mailbox ☐ Word of mouth ☐ Newspaper ☐ Radio
☐ Other (please specify): _____

Would you be interested in attending future events about the project?

- ☒ Yes ☐ No

What would you like to see at future events? What other information would you be interested in learning about this project?

job cost

OPTIONAL SECTION

If you wish to be added to our distribution list to receive information about the project, please clearly print your email address below. Contact information provided voluntarily to Simply Blue Group will be used solely to distribute information to you. Your contact information will not be sold or used for other purposes. You may "unsubscribe" from the distribution list at any time by emailing your request to feedback@simplybluegroup.com or by phoning (902) 499-6055

Email Address: _____



Simply Blue Group

Community Project Launch
Saturday, September 14, 2024, 11am-2pm
Goldboro Interpretive Centre

Feedback Form

Thank you for attending today's project launch – we hope you found it useful. Please take the time to provide feedback. Input will be compiled and summarized for consideration by the project team.

Feedback forms may be:

Dropped: in the box provided or handed to one of our staff at today's event

Mailed: Simply Blue Group ATTN: Megan Harris
1701 Hollis Street, Suite 800
Halifax, NS B3J 3M8

Emailed: feedback@simplybluegroup.com

Why did you come to today's project launch?

We live across from the Wharf in
Goldboro

What information were you hoping to gather?

What the Project involves and
where and impact on the roads &
Goldboro community

Has your understanding of the project improved because of this event?

☒ Yes ☐ No - GOOD & BAD

Do you think the project will have a positive impact on the community?

☐ Yes ☐ No

Why?

Unsure - Cutting down trees and
large lumber trucks on Hwy 316
are NOT positives. No info re
employment opportunities.

As locals, you know this area better than anyone. Is there anything you think we should know from an ecological, cultural or economic perspective? Please provide key information below.

Impact on Hwy 316. Loss of trees. Use of the land and abandon it by others in the past is not positive.

How far away do you live from the project?

☒

I would consider myself a neighbour

☐

Within 1 kilometre

☐

Within 5 kilometres

☐

Over 5 kilometres

Please indicate your level of agreement with each of the following statements:

The information presented today helped me gain an understanding of the project.

☐

Strongly Agree

☒

Agree

☐

Disagree

☐

Strongly Disagree

The information was presented in a format that was easy to understand.

☐

Strongly Agree

☐

Agree

☒

Disagree

☐

Strongly Disagree

Staff were able to adequately answer my questions.

☐

Strongly Agree

☐

Agree

☒

Disagree

☐

Strongly Disagree

How did you hear about today's event?

☒

Postcard in mailbox

☐

Word of mouth

☐

Newspaper

☐

Radio

☐

Other (please specify):

Would you be interested in attending future events about the project?

☒

Yes

☐

No

What would you like to see at future events? What other information would you be interested in learning about this project?

A focussed presentation format with opportunity to ask questions

OPTIONAL SECTION

If you wish to be added to our distribution list to receive information about the project, please clearly print your email address below. Contact information provided voluntarily to Simply Blue Group will be used solely to distribute information to you. Your contact information will not be sold or used for other purposes. You may "unsubscribe" from the distribution list at any time by emailing your request to feedback@simplybluegroup.com or by phoning (902) 499-6055

Email Address:



Simply Blue Group

Community Project Launch
Saturday, September 14, 2024, 11am-2pm
Goldboro Interpretive Centre

Feedback Form

Thank you for attending today's project launch – we hope you found it useful. Please take the time to provide feedback. Input will be compiled and summarized for consideration by the project team.

Feedback forms may be:

Dropped: in the box provided or handed to one of our staff at today's event

Mailed: Simply Blue Group ATTN: Megan Harris
1701 Hollis Street, Suite 800
Halifax, NS B3J 3M8

Emailed: feedback@simplybluegroup.com

Why did you come to today's project launch?

What information were you hoping to gather?

Has your understanding of the project improved because of this event?

☐ Yes

☒ No

Do you think the project will have a positive impact on the community?

☐ Yes

☒ No

Why?

As locals, you know this area better than anyone. Is there anything you think we should know from an ecological, cultural or economic perspective? Please provide key information below.

How far away do you live from the project?

☐ I would consider myself a neighbour

☐ Within 1 kilometre

☒ Within 5 kilometres

☐ Over 5 kilometres

Please indicate your level of agreement with each of the following statements:

The information presented today helped me gain an understanding of the project.

☐ Strongly Agree

☐ Agree

☐ Disagree

☒ Strongly Disagree

The information was presented in a format that was easy to understand.

☐ Strongly Agree

☐ Agree

☐ Disagree

☒ Strongly Disagree

Staff were able to adequately answer my questions.

☐ Strongly Agree

☐ Agree

☐ Disagree

☒ Strongly Disagree

How did you hear about today's event?

☐ Postcard in mailbox

☐ Word of mouth

☒ Newspaper

☐ Radio

☐ Other (please specify): _____

Would you be interested in attending future events about the project?

☐ Yes

☐ No

What would you like to see at future events? What other information would you be interested in learning about this project?

OPTIONAL SECTION

If you wish to be added to our distribution list to receive information about the project, please clearly print your email address below. Contact information provided voluntarily to Simply Blue Group will be used solely to distribute information to you. Your contact information will not be sold or used for other purposes. You may "unsubscribe" from the distribution list at any time by emailing your request to feedback@simplybluegroup.com or by phoning (902) 499-6055

Email Address: _____



Simply Blue Group

Community Project Launch
Saturday, September 14, 2024, 11am-2pm
Goldboro Interpretive Centre

Feedback Form

Thank you for attending today's project launch – we hope you found it useful. Please take the time to provide feedback. Input will be compiled and summarized for consideration by the project team.

Feedback forms may be:

Dropped: in the box provided or handed to one of our staff at today's event

Mailed: Simply Blue Group ATTN: Megan Harris
1701 Hollis Street, Suite 800
Halifax, NS B3J 3M8

Emailed: feedback@simplybluegroup.com

Why did you come to today's project launch?

Learn more about project

What information were you hoping to gather?

details, but I guess too early

Has your understanding of the project improved because of this event?

☒ Yes

☐ No

Do you think the project will have a positive impact on the community?

☐ Yes

☒ No

Why?

negative environmental impact

As locals, you know this area better than anyone. Is there anything you think we should know from an ecological, cultural or economic perspective? Please provide key information below.

How far away do you live from the project?

- | | |
|--|---|
| <input type="checkbox"/> I would consider myself a neighbour | <input type="checkbox"/> Within 1 kilometre |
| <input type="checkbox"/> Within 5 kilometres | <input checked="" type="checkbox"/> Over 5 kilometres |

Please indicate your level of agreement with each of the following statements:

The information presented today helped me gain an understanding of the project.

- | | | | |
|---|--------------------------------|-----------------------------------|---|
| <input type="checkbox"/> Strongly Agree | <input type="checkbox"/> Agree | <input type="checkbox"/> Disagree | <input checked="" type="checkbox"/> Strongly Disagree |
|---|--------------------------------|-----------------------------------|---|

The information was presented in a format that was easy to understand.

- | | | | |
|---|---|-----------------------------------|--|
| <input type="checkbox"/> Strongly Agree | <input checked="" type="checkbox"/> Agree | <input type="checkbox"/> Disagree | <input type="checkbox"/> Strongly Disagree |
|---|---|-----------------------------------|--|

Staff were able to adequately answer my questions.

- | | | | |
|--|--------------------------------|-----------------------------------|--|
| <input checked="" type="checkbox"/> Strongly Agree | <input type="checkbox"/> Agree | <input type="checkbox"/> Disagree | <input type="checkbox"/> Strongly Disagree |
|--|--------------------------------|-----------------------------------|--|

How did you hear about today's event?

- | | | | |
|--|--|------------------------------------|--------------------------------|
| <input type="checkbox"/> Postcard in mailbox | <input type="checkbox"/> Word of mouth | <input type="checkbox"/> Newspaper | <input type="checkbox"/> Radio |
| <input type="checkbox"/> Other (please specify): <u>Facebook</u> | | | |

Would you be interested in attending future events about the project?

- | | |
|---|-----------------------------|
| <input checked="" type="checkbox"/> Yes | <input type="checkbox"/> No |
|---|-----------------------------|

What would you like to see at future events? What other information would you be interested in learning about this project?

details

OPTIONAL SECTION

If you wish to be added to our distribution list to receive information about the project, please clearly print your email address below. Contact information provided voluntarily to Simply Blue Group will be used solely to distribute information to you. Your contact information will not be sold or used for other purposes. You may "unsubscribe" from the distribution list at any time by emailing your request to feedback@simplybluegroup.com or by phoning (902) 499-6055

Email Address: _____



Simply Blue Group

Community Project Launch
Saturday, September 14, 2024, 11am-2pm
Goldboro Interpretive Centre

Feedback Form

Thank you for attending today's project launch – we hope you found it useful. Please take the time to provide feedback. Input will be compiled and summarized for consideration by the project team.

Feedback forms may be:

Dropped: in the box provided or handed to one of our staff at today's event

Mailed: Simply Blue Group ATTN: Megan Harris
1701 Hollis Street, Suite 800
Halifax, NS B3J 3M8

Emailed: feedback@simplybluegroup.com

Why did you come to today's project launch?

It impacts me as a resident

What information were you hoping to gather?

More information on local impact

Has your understanding of the project improved because of this event?

☐ Yes

☒ No

Do you think the project will have a positive impact on the community?

☐ Yes

☒ No

Why?

Been here. Done this. Negative impact

As locals, you know this area better than anyone. Is there anything you think we should know from an ecological, cultural or economic perspective? Please provide key information below.

How far away do you live from the project?

☐ I would consider myself a neighbour

☒ Within 1 kilometre

☐ Within 5 kilometres

☐ Over 5 kilometres

Please indicate your level of agreement with each of the following statements:

The information presented today helped me gain an understanding of the project.

☐ Strongly Agree

☐ Agree

☒ Disagree

☐ Strongly Disagree

The information was presented in a format that was easy to understand.

☐ Strongly Agree

☒ Agree

☐ Disagree

☐ Strongly Disagree

Staff were able to adequately answer my questions.

☐ Strongly Agree

☒ Agree

☐ Disagree

☐ Strongly Disagree

How did you hear about today's event?

☐ Postcard in mailbox

☐ Word of mouth

☐ Newspaper

☐ Radio

☐ Other (please specify): Megan

Would you be interested in attending future events about the project?

☒ Yes

☐ No

What would you like to see at future events? What other information would you be interested in learning about this project?

OPTIONAL SECTION

If you wish to be added to our distribution list to receive information about the project, please clearly print your email address below. Contact information provided voluntarily to Simply Blue Group will be used solely to distribute information to you. Your contact information will not be sold or used for other purposes. You may "unsubscribe" from the distribution list at any time by emailing your request to feedback@simplybluegroup.com or by phoning (902) 499-6055

Email Address: _____



Simply Blue Group

Community Project Launch
Saturday, September 14, 2024, 11am-2pm
Goldboro Interpretive Centre

Feedback Form

Thank you for attending today's project launch – we hope you found it useful. Please take the time to provide feedback. Input will be compiled and summarized for consideration by the project team.

Feedback forms may be:

Dropped: in the box provided or handed to one of our staff at today's event

Mailed: Simply Blue Group ATTN: Megan Harris
1701 Hollis Street, Suite 800
Halifax, NS B3J 3M8

Emailed: feedback@simplybluegroup.com

Why did you come to today's project launch?

To understand the project, its reach and its value offer to the community

What information were you hoping to gather?

About the strategy to ensure the high qualified jobs will be filled by the people of the local communities of Guysborough

Has your understanding of the project improved because of this event?

☒ Yes

☐ No

Do you think the project will have a positive impact on the community?

☒ Yes

☐ No

Why?

Only if the local community is granted the educational resources to become the actual workforce of the project.

As locals, you know this area better than anyone. Is there anything you think we should know from an ecological, cultural or economic perspective? Please provide key information below.

it would be important to think about how to bring back (or never letting go of) the young people that leave the community to study in college or university.

How far away do you live from the project?

☐ I would consider myself a neighbour

☐ Within 1 kilometre

☐ Within 5 kilometres

☒ Over 5 kilometres (85)

Please indicate your level of agreement with each of the following statements:

The information presented today helped me gain an understanding of the project.

☒ Strongly Agree

☐ Agree

☐ Disagree

☐ Strongly Disagree

The information was presented in a format that was easy to understand.

☐ Strongly Agree

☒ Agree

☐ Disagree

☐ Strongly Disagree

Staff were able to adequately answer my questions.

☒ Strongly Agree

☐ Agree

☐ Disagree

☐ Strongly Disagree

How did you hear about today's event?

☐ Postcard in mailbox

☐ Word of mouth

☐ Newspaper

☐ Radio

☒ Other (please specify): Facebook

Would you be interested in attending future events about the project?

☒ Yes

☐ No

What would you like to see at future events? What other information would you be interested in learning about this project?

Training / education Strategie to fill in with locals the highly qualified jobs the project would bring.

OPTIONAL SECTION

If you wish to be added to our distribution list to receive information about the project, please clearly print your email address below. Contact information provided voluntarily to Simply Blue Group will be used solely to distribute information to you. Your contact information will not be sold or used for other purposes. You may "unsubscribe" from the distribution list at any time by emailing your request to feedback@simplybluegroup.com or by phoning (902) 499-6055

Email Address: _____



Simply Blue Group

Community Project Launch
Saturday, September 14, 2024, 11am-2pm
Goldboro Interpretive Centre

Feedback Form

Thank you for attending today's project launch – we hope you found it useful. Please take the time to provide feedback. Input will be compiled and summarized for consideration by the project team.

Feedback forms may be:

Dropped: in the box provided or handed to one of our staff at today's event

Mailed: Simply Blue Group ATTN: Megan Harris
1701 Hollis Street, Suite 800
Halifax, NS B3J 3M8

Emailed: feedback@simplybluegroup.com

Why did you come to today's project launch?

to see just what Simply Blue is, if it has a chance
to make drum head a bigger and better place.

What information were you hoping to gather?

size, location, and when they will start.

Has your understanding of the project improved because of this event?

☐

Yes

☒

No

Do you think the project will have a positive impact on the community?

☒

Yes

☐

No

Why?

any development for job's, growing our community
is a plus.

As locals, you know this area better than anyone. Is there anything you think we should know from an ecological, cultural or economic perspective? Please provide key information below.

the fishery is my only concern

How far away do you live from the project?

☐ I would consider myself a neighbour

☒ Within 1 kilometre

☐ Within 5 kilometres

☐ Over 5 kilometres

Please indicate your level of agreement with each of the following statements:

The information presented today helped me gain an understanding of the project.

☐ Strongly Agree

☒ Agree

☐ Disagree

☐ Strongly Disagree

The information was presented in a format that was easy to understand.

☐ Strongly Agree

☒ Agree

☐ Disagree

☐ Strongly Disagree

Staff were able to adequately answer my questions.

☐ Strongly Agree

☒ Agree

☐ Disagree

☐ Strongly Disagree

How did you hear about today's event?

☐ Postcard in mailbox

☐ Word of mouth

☐ Newspaper

☒ Radio

☐ Other (please specify): radio internet.

Would you be interested in attending future events about the project?

☒ Yes

☐ No

What would you like to see at future events? What other information would you be interested in learning about this project?

project size. location man power needed.
to build and operate.

OPTIONAL SECTION

If you wish to be added to our distribution list to receive information about the project, please clearly print your email address below. Contact information provided voluntarily to Simply Blue Group will be used solely to distribute information to you. Your contact information will not be sold or used for other purposes. You may "unsubscribe" from the distribution list at any time by emailing your request to feedback@simplybluegroup.com or by phoning (902) 499-6055

Email Address: [REDACTED]



Simply Blue Group

Community Project Launch
Saturday, September 14, 2024, 11am-2pm
Goldboro Interpretive Centre

Feedback Form

Thank you for attending today's project launch – we hope you found it useful. Please take the time to provide feedback. Input will be compiled and summarized for consideration by the project team.

Feedback forms may be:

Dropped: in the box provided or handed to one of our staff at today's event

Mailed: Simply Blue Group ATTN: Megan Harris
1701 Hollis Street, Suite 800
Halifax, NS B3J 3M8

Emailed: feedback@simplybluegroup.com

Why did you come to today's project launch?

For information regarding this project

What information were you hoping to gather?

Has your understanding of the project improved because of this event?

☒ Yes

☐ No

Do you think the project will have a positive impact on the community?

☒ Yes

☐ No

Why?

Employment

As locals, you know this area better than anyone. Is there anything you think we should know from an ecological, cultural or economic perspective? Please provide key information below.

How far away do you live from the project?

- | | |
|--|---|
| <input type="checkbox"/> I would consider myself a neighbour | <input type="checkbox"/> Within 1 kilometre |
| <input checked="" type="checkbox"/> Within 5 kilometres | <input type="checkbox"/> Over 5 kilometres |

Please indicate your level of agreement with each of the following statements:

The information presented today helped me gain an understanding of the project.

- | | | | |
|---|---|-----------------------------------|--|
| <input type="checkbox"/> Strongly Agree | <input checked="" type="checkbox"/> Agree | <input type="checkbox"/> Disagree | <input type="checkbox"/> Strongly Disagree |
|---|---|-----------------------------------|--|

The information was presented in a format that was easy to understand.

- | | | | |
|---|---|-----------------------------------|--|
| <input type="checkbox"/> Strongly Agree | <input checked="" type="checkbox"/> Agree | <input type="checkbox"/> Disagree | <input type="checkbox"/> Strongly Disagree |
|---|---|-----------------------------------|--|

Staff were able to adequately answer my questions.

- | | | | |
|---|---|-----------------------------------|--|
| <input type="checkbox"/> Strongly Agree | <input checked="" type="checkbox"/> Agree | <input type="checkbox"/> Disagree | <input type="checkbox"/> Strongly Disagree |
|---|---|-----------------------------------|--|

How did you hear about today's event?

- | | | | |
|---|--|------------------------------------|--------------------------------|
| <input checked="" type="checkbox"/> Postcard in mailbox | <input type="checkbox"/> Word of mouth | <input type="checkbox"/> Newspaper | <input type="checkbox"/> Radio |
| <input type="checkbox"/> Other (please specify): _____ | | | |

Would you be interested in attending future events about the project?

- | | |
|---|-----------------------------|
| <input checked="" type="checkbox"/> Yes | <input type="checkbox"/> No |
|---|-----------------------------|

What would you like to see at future events? What other information would you be interested in learning about this project?

OPTIONAL SECTION

If you wish to be added to our distribution list to receive information about the project, please clearly print your email address below. Contact information provided voluntarily to Simply Blue Group will be used solely to distribute information to you. Your contact information will not be sold or used for other purposes. You may "unsubscribe" from the distribution list at any time by emailing your request to feedback@simplybluegroup.com or by phoning (902) 499-6055

Email Address: _____



Simply Blue Group

Community Project Launch
Saturday, September 14, 2024, 11am-2pm
Goldboro Interpretive Centre

Feedback Form

Thank you for attending today's project launch – we hope you found it useful. Please take the time to provide feedback. Input will be compiled and summarized for consideration by the project team.

Feedback forms may be:

Dropped: in the box provided or handed to one of our staff at today's event

Mailed: Simply Blue Group ATTN: Megan Harris
1701 Hollis Street, Suite 800
Halifax, NS B3J 3M8

Emailed: feedback@simplybluegroup.com

Why did you come to today's project launch?

What information were you hoping to gather?

Has your understanding of the project improved because of this event?

☐ Yes ☐ No

Do you think the project will have a positive impact on the community?

☐ Yes ☐ No

Why?

As locals, you know this area better than anyone. Is there anything you think we should know from an ecological, cultural or economic perspective? Please provide key information below.

From my vantage point, Land based
wind farms do work in our County.

How far away do you live from the project?

☐

I would consider myself a neighbour

☐

Within 1 kilometre

☒

Within 5 kilometres

☐

Over 5 kilometres

Please indicate your level of agreement with each of the following statements:

The information presented today helped me gain an understanding of the project.

☒

Strongly Agree

☐

Agree

☐

Disagree

☐

Strongly Disagree

The information was presented in a format that was easy to understand.

☐

Strongly Agree

☐

Agree

☐

Disagree

☐

Strongly Disagree

Staff were able to adequately answer my questions.

☐

Strongly Agree

☐

Agree

☐

Disagree

☐

Strongly Disagree

How did you hear about today's event?

☐

Postcard in mailbox

☒

Word of mouth

☐

Newspaper

☐

Radio

☐

Other (please specify):

Would you be interested in attending future events about the project?

☒

Yes

☐

No

What would you like to see at future events? What other information would you be interested in learning about this project?

To be kept informed of any progress to
this project.

OPTIONAL SECTION

If you wish to be added to our distribution list to receive information about the project, please clearly print your email address below. Contact information provided voluntarily to Simply Blue Group will be used solely to distribute information to you. Your contact information will not be sold or used for other purposes. You may "unsubscribe" from the distribution list at any time by emailing your request to feedback@simplybluegroup.com or by phoning (902) 499-6055

Email Address:



Simply Blue Group

Community Project Launch
Saturday, September 14, 2024, 11am-2pm
Goldboro Interpretive Centre

Feedback Form

Thank you for attending today's project launch – we hope you found it useful. Please take the time to provide feedback. Input will be compiled and summarized for consideration by the project team.

Feedback forms may be:

Dropped: in the box provided or handed to one of our staff at today's event

Mailed: Simply Blue Group ATTN: Megan Harris
1701 Hollis Street, Suite 800
Halifax, NS B3J 3M8

Emailed: feedback@simplybluegroup.com

Why did you come to today's project launch?

To get informed on the project.

What information were you hoping to gather?

What + where

Has your understanding of the project improved because of this event?

☒ Yes

☐ No

Do you think the project will have a positive impact on the community?

☒ Yes

☐ No

Why?

we need monies ^{& people} coming into our area so we
can improve & build infrastructure

As locals, you know this area better than anyone. Is there anything you think we should know from an ecological, cultural or economic perspective? Please provide key information below.

always consult with the fishermen in the area (ocean + lakes)
economically (always employ locals when possible)

How far away do you live from the project?



I would consider myself a neighbour



Within 1 kilometre



Within 5 kilometres



Over 5 kilometres

Please indicate your level of agreement with each of the following statements:

The information presented today helped me gain an understanding of the project.



Strongly Agree



Agree



Disagree



Strongly Disagree

The information was presented in a format that was easy to understand.



Strongly Agree



Agree



Disagree



Strongly Disagree

Staff were able to adequately answer my questions.



Strongly Agree



Agree



Disagree



Strongly Disagree

How did you hear about today's event?



Postcard in mailbox



Word of mouth



Newspaper



Radio



Other (please specify): Online

Would you be interested in attending future events about the project?



Yes



No

What would you like to see at future events? What other information would you be interested in learning about this project?

Keep us informed as things progress.

OPTIONAL SECTION

If you wish to be added to our distribution list to receive information about the project, please clearly print your email address below. Contact information provided voluntarily to Simply Blue Group will be used solely to distribute information to you. Your contact information will not be sold or used for other purposes. You may "unsubscribe" from the distribution list at any time by emailing your request to feedback@simplybluegroup.com or by phoning (902) 499-6055

Email Address: [REDACTED]



Simply Blue Group

Community Project Launch
Saturday, September 14, 2024, 11am-2pm
Goldboro Interpretive Centre

Feedback Form

Thank you for attending today's project launch – we hope you found it useful. Please take the time to provide feedback. Input will be compiled and summarized for consideration by the project team.

Feedback forms may be:

Dropped: in the box provided or handed to one of our staff at today's event

Mailed: Simply Blue Group ATTN: Megan Harris
1701 Hollis Street, Suite 800
Halifax, NS B3J 3M8

Emailed: feedback@simplybluegroup.com

Why did you come to today's project launch?

Simple curiosity and clarification of false rumors.
Where woodchips would be sourced and if air pollution would
be a by-product of production.

What information were you hoping to gather?

If windmills would affect residents, wild life and/or
environment. If there would be employment opportunities
for local residents.

Has your understanding of the project improved because of this event?



Yes



No

Do you think the project will have a positive impact on the community?



Yes



No

Why?

Progress is always beneficial to small communities when
a company is able to provide employment and help at this time.

As locals, you know this area better than anyone. Is there anything you think we should know from an ecological, cultural or economic perspective? Please provide key information below.

How far away do you live from the project?

- | | |
|--|---|
| <input type="checkbox"/> I would consider myself a neighbour | <input type="checkbox"/> Within 1 kilometre |
| <input checked="" type="checkbox"/> Within 5 kilometres | <input type="checkbox"/> Over 5 kilometres |

Please indicate your level of agreement with each of the following statements:

The information presented today helped me gain an understanding of the project.

- | | | | |
|--|--------------------------------|-----------------------------------|--|
| <input checked="" type="checkbox"/> Strongly Agree | <input type="checkbox"/> Agree | <input type="checkbox"/> Disagree | <input type="checkbox"/> Strongly Disagree |
|--|--------------------------------|-----------------------------------|--|

The information was presented in a format that was easy to understand.

- | | | | |
|---|---|-----------------------------------|--|
| <input type="checkbox"/> Strongly Agree | <input checked="" type="checkbox"/> Agree | <input type="checkbox"/> Disagree | <input type="checkbox"/> Strongly Disagree |
|---|---|-----------------------------------|--|

Staff were able to adequately answer my questions.

- | | | | |
|--|--------------------------------|-----------------------------------|--|
| <input checked="" type="checkbox"/> Strongly Agree | <input type="checkbox"/> Agree | <input type="checkbox"/> Disagree | <input type="checkbox"/> Strongly Disagree |
|--|--------------------------------|-----------------------------------|--|

How did you hear about today's event?

- | | | | |
|--|--|------------------------------------|--------------------------------|
| <input type="checkbox"/> Postcard in mailbox | <input type="checkbox"/> Word of mouth | <input type="checkbox"/> Newspaper | <input type="checkbox"/> Radio |
|--|--|------------------------------------|--------------------------------|

☐ Other (please specify): Galdere Interpreting Centre volunteers!

Would you be interested in attending future events about the project?

- | | |
|---|-----------------------------|
| <input checked="" type="checkbox"/> Yes | <input type="checkbox"/> No |
|---|-----------------------------|

What would you like to see at future events? What other information would you be interested in learning about this project?

OPTIONAL SECTION

If you wish to be added to our distribution list to receive information about the project, please clearly print your email address below. Contact information provided voluntarily to Simply Blue Group will be used solely to distribute information to you. Your contact information will not be sold or used for other purposes. You may "unsubscribe" from the distribution list at any time by emailing your request to feedback@simplybluegroup.com or by phoning (902) 499-6055

Email Address: [REDACTED]



Simply Blue Group

Community Project Launch
Saturday, September 14, 2024, 11am-2pm
Goldboro Interpretive Centre

Feedback Form

Thank you for attending today's project launch – we hope you found it useful. Please take the time to provide feedback. Input will be compiled and summarized for consideration by the project team.

Feedback forms may be:

Dropped: in the box provided or handed to one of our staff at today's event

Mailed: Simply Blue Group ATTN: Megan Harris
1701 Hollis Street, Suite 800
Halifax, NS B3J 3M8

Emailed: feedback@simplybluegroup.com

Why did you come to today's project launch?

TO SEE WHAT WAS HAPPENING

What information were you hoping to gather?

Project PLANS

Has your understanding of the project improved because of this event?



Yes



No

Do you think the project will have a positive impact on the community?



Yes



No

Why?

TAX REVENUE TO MUNICIPALITY

As locals, you know this area better than anyone. Is there anything you think we should know from an ecological, cultural or economic perspective? Please provide key information below.

RESPECTUAL of ENVIRONMENT

How far away do you live from the project?

- ☐ I would consider myself a neighbour ☒ Within 1 kilometre
☐ Within 5 kilometres ☐ Over 5 kilometres

Please indicate your level of agreement with each of the following statements:

The information presented today helped me gain an understanding of the project.

- ☐ Strongly Agree ☒ Agree ☐ Disagree ☐ Strongly Disagree

The information was presented in a format that was easy to understand.

- ☐ Strongly Agree ☒ Agree ☐ Disagree ☐ Strongly Disagree

Staff were able to adequately answer my questions.

- ☐ Strongly Agree ☒ Agree ☐ Disagree ☐ Strongly Disagree

How did you hear about today's event?

- ☐ Postcard in mailbox ☒ Word of mouth ☐ Newspaper ☐ Radio
☐ Other (please specify): _____

Would you be interested in attending future events about the project?

- ☒ Yes ☐ No

What would you like to see at future events? What other information would you be interested in learning about this project?

OPTIONAL SECTION

If you wish to be added to our distribution list to receive information about the project, please clearly print your email address below. Contact information provided voluntarily to Simply Blue Group will be used solely to distribute information to you. Your contact information will not be sold or used for other purposes. You may "unsubscribe" from the distribution list at any time by emailing your request to feedback@simplybluegroup.com or by phoning (902) 499-6055

Email Address: _____



Simply Blue Group

Community Project Launch
Saturday, September 14, 2024, 11am-2pm
Goldboro Interpretive Centre

Feedback Form

Thank you for attending today's project launch – we hope you found it useful. Please take the time to provide feedback. Input will be compiled and summarized for consideration by the project team.

Feedback forms may be:

Dropped: in the box provided or handed to one of our staff at today's event

Mailed: Simply Blue Group ATTN: Megan Harris
1701 Hollis Street, Suite 800
Halifax, NS B3J 3M8

Emailed: feedback@simplybluegroup.com

Why did you come to today's project launch?

We want to be informed and involved in the sustainable development of our region

What information were you hoping to gather?

*Trade offs of the project. Community involvement.
Long-term benefits for locals. Simulations of the project.*

Has your understanding of the project improved because of this event?

☒ Yes ☐ No

Do you think the project will have a positive impact on the community?

☒ Yes ☐ No

Why?

Any sustainable community-oriented project could benefit our community, and better if it is a high-tech one.

As locals, you know this area better than anyone. Is there anything you think we should know from an ecological, cultural or economic perspective? Please provide key information below.

Families would love formation opportunities for

young people, so they don't have to leave the community
for studying and working outside the
Guysborough County

How far away do you live from the project?

☐ I would consider myself a neighbour

☐ Within 1 kilometre

☐ Within 5 kilometres

☒ Over 5 kilometres
(85 km)

Please indicate your level of agreement with each of the following statements:

The information presented today helped me gain an understanding of the project.

☐ Strongly Agree

☒ Agree

☐ Disagree

☐ Strongly Disagree

The information was presented in a format that was easy to understand.

☒ Strongly Agree

☐ Agree

☐ Disagree

☐ Strongly Disagree

Staff were able to adequately answer my questions.

☒ Strongly Agree

☐ Agree

☐ Disagree

☐ Strongly Disagree

How did you hear about today's event?

☐ Postcard in mailbox

☐ Word of mouth

☐ Newspaper

☐ Radio

☒ Other (please specify): Guysborough Municipality Facebook

Would you be interested in attending future events about the project?

☒ Yes

☐ No

What would you like to see at future events? What other information would you be interested in learning about this project?

More interactive explanations. Panels are fine, but 'play' with
the information is more effective and fun.

OPTIONAL SECTION

If you wish to be added to our distribution list to receive information about the project, please clearly print your email address below. Contact information provided voluntarily to Simply Blue Group will be used solely to distribute information to you. Your contact information will not be sold or used for other purposes. You may "unsubscribe" from the distribution list at any time by emailing your request to feedback@simplybluegroup.com or by phoning (902) 499-6055

Email Address: [REDACTED]



Simply Blue Group

Community Project Launch
Saturday, September 14, 2024, 11am-2pm
Goldboro Interpretive Centre

Feedback Form

Thank you for attending today's project launch – we hope you found it useful. Please take the time to provide feedback. Input will be compiled and summarized for consideration by the project team.

Feedback forms may be:

Dropped: in the box provided or handed to one of our staff at today's event

Mailed: Simply Blue Group ATTN: Megan Harris
1701 Hollis Street, Suite 800
Halifax, NS B3J 3M8

Emailed: feedback@simplybluegroup.com

Why did you come to today's project launch?

I wanted to find out exactly what
the project was about.

What information were you hoping to gather?

How it would impact our environment and
the local economy?

Has your understanding of the project improved because of this event?

☒ Yes ☐ No

Do you think the project will have a positive impact on the community?

☒ Yes ☐ No

Why?

Create jobs, bring more people to the
area, make people who are not locals
aware of where Goldboro is, create more
customers for the small locally owned businesses
that is already here.

As locals, you know this area better than anyone. Is there anything you think we should know from an ecological, cultural or economic perspective? Please provide key information below.

As a local I have lived here all my life but
I feel from your presentation that you are doing all the
necessary studies

How far away do you live from the project? (Isaac's Harbour)

- ☒ Just across the Harbour
☒ I would consider myself a neighbour
☐ Within 1 kilometre
☐ Within 5 kilometres
☐ Over 5 kilometres

Please indicate your level of agreement with each of the following statements:

The information presented today helped me gain an understanding of the project.

- ☒ Strongly Agree ☐ Agree ☐ Disagree ☐ Strongly Disagree

The information was presented in a format that was easy to understand.

- ☒ Strongly Agree ☐ Agree ☐ Disagree ☐ Strongly Disagree

Staff were able to adequately answer my questions.

- ☒ Strongly Agree ☐ Agree ☐ Disagree ☐ Strongly Disagree

How did you hear about today's event?

- ☒ Postcard in mailbox ☐ Word of mouth ☐ Newspaper ☒ Radio
☐ Other (please specify): _____

Would you be interested in attending future events about the project?

- ☒ Yes ☐ No

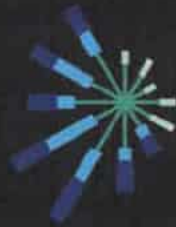
What would you like to see at future events? What other information would you be interested in learning about this project?

Will there be any jobs for locals
when the time comes?

OPTIONAL SECTION

If you wish to be added to our distribution list to receive information about the project, please clearly print your email address below. Contact information provided voluntarily to Simply Blue Group will be used solely to distribute information to you. Your contact information will not be sold or used for other purposes. You may "unsubscribe" from the distribution list at any time by emailing your request to feedback@simplybluegroup.com or by phoning (902) 499-6055

Email Address: _____



Simply Blue Group

Community Project Launch
Saturday, September 14, 2024, 11am-2pm
Goldboro Interpretive Centre

Feedback Form

Thank you for attending today's project launch – we hope you found it useful. Please take the time to provide feedback. Input will be compiled and summarized for consideration by the project team.

Feedback forms may be:

Dropped: in the box provided or handed to one of our staff at today's event

Mailed: Simply Blue Group ATTN: Megan Harris
1701 Hollis Street, Suite 800
Halifax, NS B3J 3M8

Emailed: feedback@simplybluegroup.com

Why did you come to today's project launch?

See what it's all about, where the project is being located etc.

What information were you hoping to gather?

interested in the process part of the project.

Has your understanding of the project improved because of this event?

☒ Yes

☐ No

Do you think the project will have a positive impact on the community?

☒ Yes

☐ No

Why?

As a contractor hoping to bid some work at the processing part of plant.

As locals, you know this area better than anyone. Is there anything you think we should know from an ecological, cultural or economic perspective? Please provide key information below.

from 2 hours away

How far away do you live from the project?

☐ I would consider myself a neighbour

☐ Within 1 kilometre

☐ Within 5 kilometres

☒ Over 5 kilometres

Please indicate your level of agreement with each of the following statements:

The information presented today helped me gain an understanding of the project.

☐ Strongly Agree

☒ Agree

☐ Disagree

☐ Strongly Disagree

The information was presented in a format that was easy to understand.

☒ Strongly Agree

☐ Agree

☐ Disagree

☐ Strongly Disagree

Staff were able to adequately answer my questions.

☒ Strongly Agree

☐ Agree

☐ Disagree

☐ Strongly Disagree

How did you hear about today's event?

☐ Postcard in mailbox

☐ Word of mouth

☐ Newspaper

☒ Radio

☐ Other (please specify): _____

Would you be interested in attending future events about the project?

☒ Yes

☐ No

What would you like to see at future events? What other information would you be interested in learning about this project?

just progress of projects

OPTIONAL SECTION

If you wish to be added to our distribution list to receive information about the project, please clearly print your email address below. Contact information provided voluntarily to Simply Blue Group will be used solely to distribute information to you. Your contact information will not be sold or used for other purposes. You may "unsubscribe" from the distribution list at any time by emailing your request to feedback@simplybluegroup.com or by phoning (902) 499-6055.

Email Address: _____



Simply Blue Group

Community Project Launch
Saturday, September 14, 2024, 11am-2pm
Goldboro Interpretive Centre

Feedback Form

Thank you for attending today's project launch – we hope you found it useful. Please take the time to provide feedback. Input will be compiled and summarized for consideration by the project team.

Feedback forms may be:

Dropped: in the box provided or handed to one of our staff at today's event

Mailed: Simply Blue Group ATTN: Megan Harris
1701 Hollis Street, Suite 800
Halifax, NS B3J 3M8

Emailed: feedback@simplybluegroup.com

Why did you come to today's project launch?

*Interested in any developments that will affect
our local communities.*

What information were you hoping to gather?

*How the project will affect our area. Changes?
Employment? population? dangers?*

Has your understanding of the project improved because of this event?

☒ Yes

☐ No

Do you think the project will have a positive impact on the community?

☒ Yes

☐ No

Why?

*Employment opportunities for locals. Bring new
people to our area*

As locals, you know this area better than anyone. Is there anything you think we should know from an ecological, cultural or economic perspective? Please provide key information below.

How far away do you live from the project?

☐ I would consider myself a neighbour

☒ Within 1 kilometre

☒ Within 5 kilometres

☐ Over 5 kilometres

Please indicate your level of agreement with each of the following statements:

The information presented today helped me gain an understanding of the project.

☒ Strongly Agree

☐ Agree

☐ Disagree

☐ Strongly Disagree

The information was presented in a format that was easy to understand.

☐ Strongly Agree

☒ Agree

☐ Disagree

☐ Strongly Disagree

Staff were able to adequately answer my questions.

☒ Strongly Agree

☐ Agree

☐ Disagree

☐ Strongly Disagree

How did you hear about today's event?

☐ Postcard in mailbox

☒ Word of mouth

☐ Newspaper

☒ Radio

☒ Other (please specify): facebook,

Would you be interested in attending future events about the project?

☒ Yes

☐ No

What would you like to see at future events? What other information would you be interested in learning about this project?

Any factors that will affect the life of locals.

OPTIONAL SECTION

If you wish to be added to our distribution list to receive information about the project, please clearly print your email address below. Contact information provided voluntarily to Simply Blue Group will be used solely to distribute information to you. Your contact information will not be sold or used for other purposes. You may "unsubscribe" from the distribution list at any time by emailing your request to feedback@simplybluegroup.com or by phoning (902) 499-6055

Email Address: [REDACTED]



Simply Blue Group

Community Project Launch
Saturday, September 14, 2024, 11am-2pm
Goldboro Interpretive Centre

Feedback Form

Thank you for attending today's project launch – we hope you found it useful. Please take the time to provide feedback. Input will be compiled and summarized for consideration by the project team.

Feedback forms may be:

Dropped: in the box provided or handed to one of our staff at today's event

Mailed: Simply Blue Group ATTN: Megan Harris
1701 Hollis Street, Suite 800
Halifax, NS B3J 3M8

Emailed: feedback@simplybluegroup.com

Why did you come to today's project launch?

Interested in any proposed development
of such projects

What information were you hoping to gather?

General Concept, hoped to have seen
a proposed layout (conceptual)

Has your understanding of the project improved because of this event?

☒ Yes ☐ No

Do you think the project will have a positive impact on the community?

☒ Yes ☐ No

Why?

Wouldn't take much to provide
growth, so many projects come and went.

As locals, you know this area better than anyone. Is there anything you think we should know from an ecological, cultural or economic perspective? Please provide key information below.

spent 10 yrs working on the Keltic Petrochemical project

How far away do you live from the project?

☐ I would consider myself a neighbour

☐ Within 1 kilometre

☐ Within 5 kilometres

☒ Over 5 kilometres

Please indicate your level of agreement with each of the following statements:

The information presented today helped me gain an understanding of the project.

☐ Strongly Agree

☒ Agree

☐ Disagree

☐ Strongly Disagree

The information was presented in a format that was easy to understand.

☐ Strongly Agree

☒ Agree

☐ Disagree

☐ Strongly Disagree

Staff were able to adequately answer my questions.

☐ Strongly Agree

☒ Agree

☐ Disagree

☐ Strongly Disagree

How did you hear about today's event?

☐ Postcard in mailbox

☐ Word of mouth

☒ Newspaper

☐ Radio

☐ Other (please specify):

Been following any proposed projects

Would you be interested in attending future events about the project?

☒ Yes

☐ No

What would you like to see at future events? What other information would you be interested in learning about this project?

Proposed layout, as previous owner of a Consulting firm, worked 10 yrs on the Keltic Petrochemical project

OPTIONAL SECTION

If you wish to be added to our distribution list to receive information about the project, please clearly print your email address below. Contact information provided voluntarily to Simply Blue Group will be used solely to distribute information to you. Your contact information will not be sold or used for other purposes. You may "unsubscribe" from the distribution list at any time by emailing your request to feedback@simplybluegroup.com or by phoning (902) 499-6055

Email Address

[REDACTED]



Simply Blue Group

Community Project Launch
Saturday, September 14, 2024, 11am-2pm
Goldboro Interpretive Centre

Feedback Form

Thank you for attending today's project launch – we hope you found it useful. Please take the time to provide feedback. Input will be compiled and summarized for consideration by the project team.

Feedback forms may be:

Dropped: in the box provided or handed to one of our staff at today's event

Mailed: Simply Blue Group ATTN: Megan Harris
1701 Hollis Street, Suite 800
Halifax, NS B3J 3M8

Emailed: feedback@simplybluegroup.com

Why did you come to today's project launch?

live across the road from the
wharf.

What information were you hoping to gather?

environmental impact.

Has your understanding of the project improved because of this event?

☒ Yes

☐ No

Do you think the project will have a positive impact on the community?

☐ Yes

☐ No

Why?

not sure...

As locals, you know this area better than anyone. Is there anything you think we should know from an ecological, cultural or economic perspective? Please provide key information below.

don't build it and then
leave.

How far away do you live from the project?

☒ I would consider myself a neighbour

☐ Within 1 kilometre

☐ Within 5 kilometres

☐ Over 5 kilometres

Please indicate your level of agreement with each of the following statements:

The information presented today helped me gain an understanding of the project.

☐ Strongly Agree

☒ Agree

☐ Disagree

☐ Strongly Disagree

The information was presented in a format that was easy to understand.

☐ Strongly Agree

☒ Agree

☐ Disagree

☐ Strongly Disagree

Staff were able to adequately answer my questions.

☐ Strongly Agree

☒ Agree

☐ Disagree

☐ Strongly Disagree

How did you hear about today's event?

☒ Postcard in mailbox

☐ Word of mouth

☐ Newspaper

☐ Radio

☐ Other (please specify): _____

Would you be interested in attending future events about the project?

☒ Yes

☐ No

What would you like to see at future events? What other information would you be interested in learning about this project?

[Redacted]

OPTIONAL SECTION

If you wish to be added to our distribution list to receive information about the project, please clearly print your email address below. Contact information provided voluntarily to Simply Blue Group will be used solely to distribute information to you. Your contact information will not be sold or used for other purposes. You may "unsubscribe" from the distribution list at any time by emailing your request to feedback@simplybluegroup.com or by phoning (902) 499-6055

Email Address: _____



Simply Blue Group

Community Project Launch
Saturday, September 14, 2024, 11am-2pm
Goldboro Interpretive Centre

Feedback Form

Thank you for attending today's project launch – we hope you found it useful. Please take the time to provide feedback. Input will be compiled and summarized for consideration by the project team.

Feedback forms may be:

Dropped: in the box provided or handed to one of our staff at today's event

Mailed: Simply Blue Group ATTN: Megan Harris
1701 Hollis Street, Suite 800
Halifax, NS B3J 3M8

Emailed: feedback@simplybluegroup.com

Why did you come to today's project launch?

personally invited

What information were you hoping to gather?

operation details

Has your understanding of the project improved because of this event?

☒ Yes

☐ No

Do you think the project will have a positive impact on the community?

☒ Yes

☐ No

Why?

As locals, you know this area better than anyone. Is there anything you think we should know from an ecological, cultural or economic perspective? Please provide key information below.

our roads are in very poor condition
overgrown ditches poor visibility

How far away do you live from the project?

☐ I would consider myself a neighbour

☒ Within 1 kilometre

☐ Within 5 kilometres

☐ Over 5 kilometres

Please indicate your level of agreement with each of the following statements:

The information presented today helped me gain an understanding of the project.

☐ Strongly Agree

☒ Agree

☐ Disagree

☐ Strongly Disagree

The information was presented in a format that was easy to understand.

☐ Strongly Agree

☒ Agree

☐ Disagree

☐ Strongly Disagree

Staff were able to adequately answer my questions.

☐ Strongly Agree

☒ Agree

☐ Disagree

☐ Strongly Disagree

How did you hear about today's event?

☐ Postcard in mailbox

☒ Word of mouth

☐ Newspaper

☐ Radio

☐ Other (please specify): _____

Would you be interested in attending future events about the project?

☒ Yes

☐ No

What would you like to see at future events? What other information would you be interested in learning about this project?

OPTIONAL SECTION

If you wish to be added to our distribution list to receive information about the project, please clearly print your email address below. Contact information provided voluntarily to Simply Blue Group will be used solely to distribute information to you. Your contact information will not be sold or used for other purposes. You may "unsubscribe" from the distribution list at any time by emailing your request to feedback@simplybluegroup.com or by phoning (902) 499-6055

Email Address: _____



Simply Blue Group

Community Project Launch
Saturday, September 14, 2024, 11am-2pm
Goldboro Interpretive Centre

Feedback Form

Thank you for attending today's project launch – we hope you found it useful. Please take the time to provide feedback. Input will be compiled and summarized for consideration by the project team.

Feedback forms may be:

Dropped: in the box provided or handed to one of our staff at today's event

Mailed: Simply Blue Group ATTN: Megan Harris
1701 Hollis Street, Suite 800
Halifax, NS B3J 3M8

Emailed: feedback@simplybluegroup.com

Why did you come to today's project launch?

for information

What information were you hoping to gather?

understand the community impact

Has your understanding of the project improved because of this event?



Yes



No

Do you think the project will have a positive impact on the community?



Yes



No

Why?

Keep people in the area and offer jobs.

As locals, you know this area better than anyone. Is there anything you think we should know from an ecological, cultural or economic perspective? Please provide key information below.

How far away do you live from the project?

☐ I would consider myself a neighbour

☒ Within 1 kilometre

☐ Within 5 kilometres

☐ Over 5 kilometres

Please indicate your level of agreement with each of the following statements:

The information presented today helped me gain an understanding of the project.

☒ Strongly Agree

☐ Agree

☐ Disagree

☐ Strongly Disagree

The information was presented in a format that was easy to understand.

☒ Strongly Agree

☐ Agree

☐ Disagree

☐ Strongly Disagree

Staff were able to adequately answer my questions.

☒ Strongly Agree

☐ Agree

☐ Disagree

☐ Strongly Disagree

How did you hear about today's event?

☒ Postcard in mailbox

☒ Word of mouth

☐ Newspaper

☒ Radio

☐ Other (please specify): _____

Would you be interested in attending future events about the project?

☒ Yes

☐ No

What would you like to see at future events? What other information would you be interested in learning about this project?

OPTIONAL SECTION

If you wish to be added to our distribution list to receive information about the project, please clearly print your email address below. Contact information provided voluntarily to Simply Blue Group will be used solely to distribute information to you. Your contact information will not be sold or used for other purposes. You may "unsubscribe" from the distribution list at any time by emailing your request to feedback@simplybluegroup.com or by phoning (902) 499-6055

Email Address: _____



Simply Blue Group

Community Project Launch
Saturday, September 14, 2024, 11am-2pm
Goldboro Interpretive Centre

Feedback Form

Thank you for attending today's project launch – we hope you found it useful. Please take the time to provide feedback. Input will be compiled and summarized for consideration by the project team.

Feedback forms may be:

Dropped: in the box provided or handed to one of our staff at today's event

Mailed: Simply Blue Group ATTN: Megan Harris
1701 Hollis Street, Suite 800
Halifax, NS B3J 3M8

Emailed: feedback@simplybluegroup.com

Why did you come to today's project launch?

to learn more

What information were you hoping to gather?

learn about entire vision of project

Has your understanding of the project improved because of this event?

☒ Yes

☐ No

Do you think the project will have a positive impact on the community?

☐ Yes

☐ No

?

Why?

I see positive & negative - one concern is traffic - biomass trucking especially

As locals, you know this area better than anyone. Is there anything you think we should know from an ecological, cultural or economic perspective? Please provide key information below.

How far away do you live from the project?

- ☐ I would consider myself a neighbour ☒ Within 1 kilometre
- ☐ Within 5 kilometres ☐ Over 5 kilometres

Please indicate your level of agreement with each of the following statements:

The information presented today helped me gain an understanding of the project.

- ☐ Strongly Agree ☒ Agree ☐ Disagree ☐ Strongly Disagree

The information was presented in a format that was easy to understand.

- ☐ Strongly Agree ☒ Agree ☐ Disagree ☐ Strongly Disagree

Staff were able to adequately answer my questions.

- ☒ Strongly Agree ☐ Agree ☐ Disagree ☐ Strongly Disagree

How did you hear about today's event?

- ☒ Postcard in mailbox ☐ Word of mouth ☐ Newspaper ☐ Radio
- ☐ Other (please specify): _____

Would you be interested in attending future events about the project?

- ☒ Yes ☐ No

What would you like to see at future events? What other information would you be interested in learning about this project?

OPTIONAL SECTION

If you wish to be added to our distribution list to receive information about the project, please clearly print your email address below. Contact information provided voluntarily to Simply Blue Group will be used solely to distribute information to you. Your contact information will not be sold or used for other purposes. You may "unsubscribe" from the distribution list at any time by emailing your request to feedback@simplybluegroup.com or by phoning (902) 499-6055

Email Address: _____



Simply Blue Group

Community Project Launch
Saturday, September 14, 2024, 11am-2pm
Goldboro Interpretive Centre

Feedback Form

Thank you for attending today's project launch – we hope you found it useful. Please take the time to provide feedback. Input will be compiled and summarized for consideration by the project team.

Feedback forms may be:

Dropped: in the box provided or handed to one of our staff at today's event

Mailed: Simply Blue Group ATTN: Megan Harris
1701 Hollis Street, Suite 800
Halifax, NS B3J 3M8

Emailed: feedback@simplybluegroup.com

Why did you come to today's project launch?

To find out more about what is planned for our community

What information were you hoping to gather?

Where proposed work will take place

Has your understanding of the project improved because of this event?

☒ Yes

☐ No

Do you think the project will have a positive impact on the community?

☐ Yes

☐ No

☒ maybe

Why?

- short term yes as it may provide jobs while project is being built / developed. Questionable positive impact once built.

- will the project be maintaining the roads, making sure our harbour stays clean etc - These are still concerns I have.

As locals, you know this area better than anyone. Is there anything you think we should know from an ecological, cultural or economic perspective? Please provide key information below.

How far away do you live from the project?

☐ I would consider myself a neighbour

☒ Within 1 kilometre

☐ Within 5 kilometres

☐ Over 5 kilometres

Please indicate your level of agreement with each of the following statements:

The information presented today helped me gain an understanding of the project.

☐ Strongly Agree

☒ Agree

☐ Disagree

☐ Strongly Disagree

The information was presented in a format that was easy to understand.

☐ Strongly Agree

☒ Agree

☐ Disagree

☐ Strongly Disagree

Staff were able to adequately answer my questions.

☐ Strongly Agree

☒ Agree

☐ Disagree

☐ Strongly Disagree

How did you hear about today's event?

☒ Postcard in mailbox

☐ Word of mouth

☐ Newspaper

☐ Radio

☐ Other (please specify): _____

Would you be interested in attending future events about the project?

☒ Yes

☐ No

What would you like to see at future events? What other information would you be interested in learning about this project?

- will our roads be maintained (all the use for trucks etc.)
- will the harbour be monitored for pollution etc.

OPTIONAL SECTION

If you wish to be added to our distribution list to receive information about the project, please clearly print your email address below. Contact information provided voluntarily to Simply Blue Group will be used solely to distribute information to you. Your contact information will not be sold or used for other purposes. You may "unsubscribe" from the distribution list at any time by emailing your request to feedback@simplybluegroup.com or by phoning (902) 499-6055

Email Address: _____



Simply Blue
Group

Community Project Launch
Saturday, September 14, 2024, 11am-2pm
Goldboro Interpretive Centre

Feedback Form

Thank you for attending today's project launch – we hope you found it useful. Please take the time to provide feedback. Input will be compiled and summarized for consideration by the project team.

Feedback forms may be:

Dropped: in the box provided or handed to one of our staff at today's event

Mailed: Simply Blue Group ATTN: Megan Harris
1701 Hollis Street, Suite 800
Halifax, NS B3J 3M8

Emailed: feedback@simplybluegroup.com

Why did you come to today's project launch?

infor about project

What information were you hoping to gather?

rough idea as to what will be happening

Has your understanding of the project improved because of this event?

☒ Yes ☐ No

Do you think the project will have a positive impact on the community?

☒ Yes ☐ No

Why?

We need this!!

As locals, you know this area better than anyone. Is there anything you think we should know from an ecological, cultural or economic perspective? Please provide key information below.

I think this project would be wonderful for us. We welcome you!

How far away do you live from the project?



I would consider myself a neighbour



Within 1 kilometre



Within 5 kilometres



Over 5 kilometres

Please indicate your level of agreement with each of the following statements:

The information presented today helped me gain an understanding of the project.



Strongly Agree



Agree



Disagree



Strongly Disagree

The information was presented in a format that was easy to understand.



Strongly Agree



Agree



Disagree



Strongly Disagree

Staff were able to adequately answer my questions.



Strongly Agree



Agree



Disagree



Strongly Disagree

How did you hear about today's event?



Postcard in mailbox



Word of mouth



Newspaper



Radio



Other (please specify): _____

Would you be interested in attending future events about the project?



Yes



No

What would you like to see at future events? What other information would you be interested in learning about this project?

would like to see us kept up to date on any thing new

OPTIONAL SECTION

If you wish to be added to our distribution list to receive information about the project, please clearly print your email address below. Contact information provided voluntarily to Simply Blue Group will be used solely to distribute information to you. Your contact information will not be sold or used for other purposes. You may "unsubscribe" from the distribution list at any time by emailing your request to feedback@simplybluegroup.com or by phoning (902) 499-6055

Email Address: _____



Simply Blue
Group

Community Project Launch
Saturday, September 14, 2024, 11am-2pm
Goldboro Interpretive Centre

Feedback Form

Thank you for attending today's project launch – we hope you found it useful. Please take the time to provide feedback. Input will be compiled and summarized for consideration by the project team.

Feedback forms may be:

Dropped: in the box provided or handed to one of our staff at today's event

Mailed: Simply Blue Group ATTN: Megan Harris
1701 Hollis Street, Suite 800
Halifax, NS B3J 3M8

Emailed: feedback@simplybluegroup.com

Why did you come to today's project launch?

TO SEE THE PROPOSAL IN ITS ENTIRETY!

What information were you hoping to gather?

THE ENTIRE PROCESS! IT'S TOO BAD PEOPLE IN THE COMMUNITY COULD BENEFIT IN THE SOLAR + WIND POWER

Has your understanding of the project improved because of this event? BEING PROPOSED.

☒ Yes *

☐ No

*ABSOLUTELY!

Do you think the project will have a positive impact on the community?

☒ Yes

☐ No

Why?

BRING JOBS + PEOPLE BACK TO ^{THIS} RETIREMENT COMMUNITY!

KEVIN H. SILVER, GOLDBORO RESIDENT!

As locals, you know this area better than anyone. Is there anything you think we should know from an ecological, cultural or economic perspective? Please provide key information below.

How far away do you live from the project?

☒ I would consider myself a neighbour

☐ Within 1 kilometre

☒ Within 5 kilometres

☐ Over 5 kilometres

Please indicate your level of agreement with each of the following statements:

The information presented today helped me gain an understanding of the project.

☒ Strongly Agree

☐ Agree

☐ Disagree

☐ Strongly Disagree

The information was presented in a format that was easy to understand.

☒ Strongly Agree

☐ Agree

☐ Disagree

☐ Strongly Disagree

Staff were able to adequately answer my questions.

☒ Strongly Agree

☐ Agree

☐ Disagree

☐ Strongly Disagree

How did you hear about today's event?

☒ Postcard in mailbox

☐ Word of mouth

☐ Newspaper

☐ Radio

☒ Other (please specify):

THEIR DROPPING OFF FLUOR AT MY HOUSE,

Would you be interested in attending future events about the project?

☒ Yes

☐ No

What would you like to see at future events? What other information would you be interested in learning about this project?

SEEING THE ACTUAL METHANAL IN A CLEAR CONTAINER + HOW MUCH IS BURNIS OFF + WHAT EXHAUST IS THE INVIROMENT WILL BE

OPTIONAL SECTION

If you wish to be added to our distribution list to receive information about the project, please clearly print your email address below. Contact information provided voluntarily to Simply Blue Group will be used solely to distribute information to you. Your contact information will not be sold or used for other purposes. You may "unsubscribe" from the distribution list at any time by emailing your request to feedback@simplybluegroup.com or by phoning (902) 499-6055

Email Address: _____



Simply Blue
Group

Community Project Launch
Saturday, September 14, 2024, 11am-2pm
Goldboro Interpretive Centre

Feedback Form

Thank you for attending today's project launch – we hope you found it useful. Please take the time to provide feedback. Input will be compiled and summarized for consideration by the project team.

Feedback forms may be:

Dropped: in the box provided or handed to one of our staff at today's event

Mailed: Simply Blue Group ATTN: Megan Harris
1701 Hollis Street, Suite 800
Halifax, NS B3J 3M8

Emailed: feedback@simplybluegroup.com

Why did you come to today's project launch?

Learn more regarding the proposed project.

What information were you hoping to gather?

*Specific location of wind farm and operation/
maintenance issues. Costing.*

Has your understanding of the project improved because of this event?

☒ Yes

☐ No

Do you think the project will have a positive impact on the community?

☒ Yes

☐ No

Why?

*Initially but some reservations, regarding
the long-term impact.*

As locals, you know this area better than anyone. Is there anything you think we should know from an ecological, cultural or economic perspective? Please provide key information below.

environmental impact on wildlife and humans

How far away do you live from the project?

☒ I would consider myself a neighbour

☐ Within 1 kilometre

☒ Within 5 kilometres

☐ Over 5 kilometres

Please indicate your level of agreement with each of the following statements:

The information presented today helped me gain an understanding of the project.

☐ Strongly Agree

☒ Agree

☐ Disagree

☐ Strongly Disagree

The information was presented in a format that was easy to understand.

☐ Strongly Agree

☒ Agree

☐ Disagree

☐ Strongly Disagree

Staff were able to adequately answer my questions.

☐ Strongly Agree

☒ Agree

☐ Disagree

☐ Strongly Disagree

How did you hear about today's event?

☒ Postcard in mailbox

☐ Word of mouth

☐ Newspaper

☐ Radio

☐ Other (please specify): _____

Would you be interested in attending future events about the project?

☒ Yes

☐ No

What would you like to see at future events? What other information would you be interested in learning about this project?

*Longer term implications regarding cost effectiveness
and economy-scale issues. In short are the
costs worth the investment?*

OPTIONAL SECTION

If you wish to be added to our distribution list to receive information about the project, please clearly print your email address below. Contact information provided voluntarily to Simply Blue Group will be used solely to distribute information to you. Your contact information will not be sold or used for other purposes. You may "unsubscribe" from the distribution list at any time by emailing your request to feedback@simplybluegroup.com or by phoning (902) 499-6055

Email Address: _____

When getting a ticket is a good thing

RCMP hand out Freezies for kindness, safety and smart summer choices

By Chloe Hannan, Local Journalism Initiative Reporter

GUYSBOROUGH — In a refreshing twist on traditional enforcement, the Guysborough District RCMP are handing out “positive tickets” to youth spotted doing good deeds or making safe choices this summer. Each ticket comes with a sweet reward.

“All summer long until September 15, our officers will be patrolling the area looking for any good deeds from youth,” said Sergeant Natasha Farrell.

“They’ll also be looking for safety, so if they see a child that’s wearing a helmet while biking or scootering, then they [may receive] a positive ticket.”

Other actions that could earn a positive ticket include using crosswalks or helping someone in the neighbourhood.

Each ticket can be redeemed at any RCMP detachment in Guysborough County with a parent or

guardian for a Freezie.

“It’s just a way to increase our interactions with youth in a positive way and reward good deeds,” Farrell said. “Once they have their ticket, they can bring it to our detachments, Monday to Friday, with a parent or guardian and get a Freezie for their reward.”

The program is local, developed by officers looking to foster positive relationships with young people in the region. Farrell said the early response has been enthusiastic, especially from kids.

The kids are really excited,” she said. “There’s been a bit of confusion with parents because they hear the word ‘ticket’ as negative, so we’ve had to have those clarifying conversations to let them know their child was seen doing a good act and we’re rewarding them. From this story, hopefully more people will learn about the program.”

Beyond just handing



Members of the Guysborough District RCMP are on the lookout for safe play and community involvement this summer. Youth spotted wearing helmets while cycling or scootering, using crosswalks or helping others may receive a ‘positive ticket’ redeemable for a treat at any RCMP office Guysborough County. Kayleb MacNabb (red shirt), Issac Gosbee and Spencer Dixon (not pictured) are among the early recipients of the tasty reward. Contributed

out Freezies, the goal is to recognize and reinforce positive behaviour among youth and help break down barriers between young people and police.

“We want to make sure that youth know when they do something

good, we’re noticing it,” said Farrell. “Also, rather than them being apprehensive [about talking] to the police, we want them to have a positive interaction with them, so they know it’s not always a bad thing. It just reinforces good habits and,

if we invest in rewarding those good habits now, we hope they’ll continue to do them when they’re adults.”

Officers hope to see even more young people proudly receiving positive tickets in the weeks ahead.

RCMP calls: June by the numbers

Guysborough County District RCMP responded to 133 calls for service during June. While some calls of a sensitive nature were excluded from public reporting, here’s how the rest break down:

- Road safety – 47
- Crimes against property – 22
- Assist the public – 18
- Other – 16
- Crimes against persons – 13
- Other provincial statutes – 12
- Other Criminal Code – 5

Source: Guysborough County District RCMP

YOU'RE INVITED!

Learn About the Future of Sustainable Fuels in Goldboro

Exciting changes are coming to Nova Scotia's Eastern Shore. Nova Sustainable Fuels, now leading the Goldboro sustainable fuels project with support from Octopus Energy Generation, is planning a new renewable energy park right here in Goldboro.

Come learn how the project will support a cleaner future by producing sustainable aviation fuel and renewable methanol — and what it means for our environment and local area. Nova Sustainable Fuels will share results from nearly two years of environmental studies and reveal early designs of the proposed site.

We'd love to hear your thoughts and answer your questions.

Hope to see you there!

Date: Wednesday, July 23, 2025

Time: 4-6 p.m.

Location: Goldboro Interpretive Centre
(12881 Highway 316)



For more information, please contact: info@novasustainablefuels.com