

Ocean Lake Wind Project

Potential Rusty Blackbird Breeding Habitat

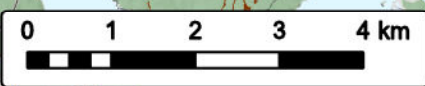


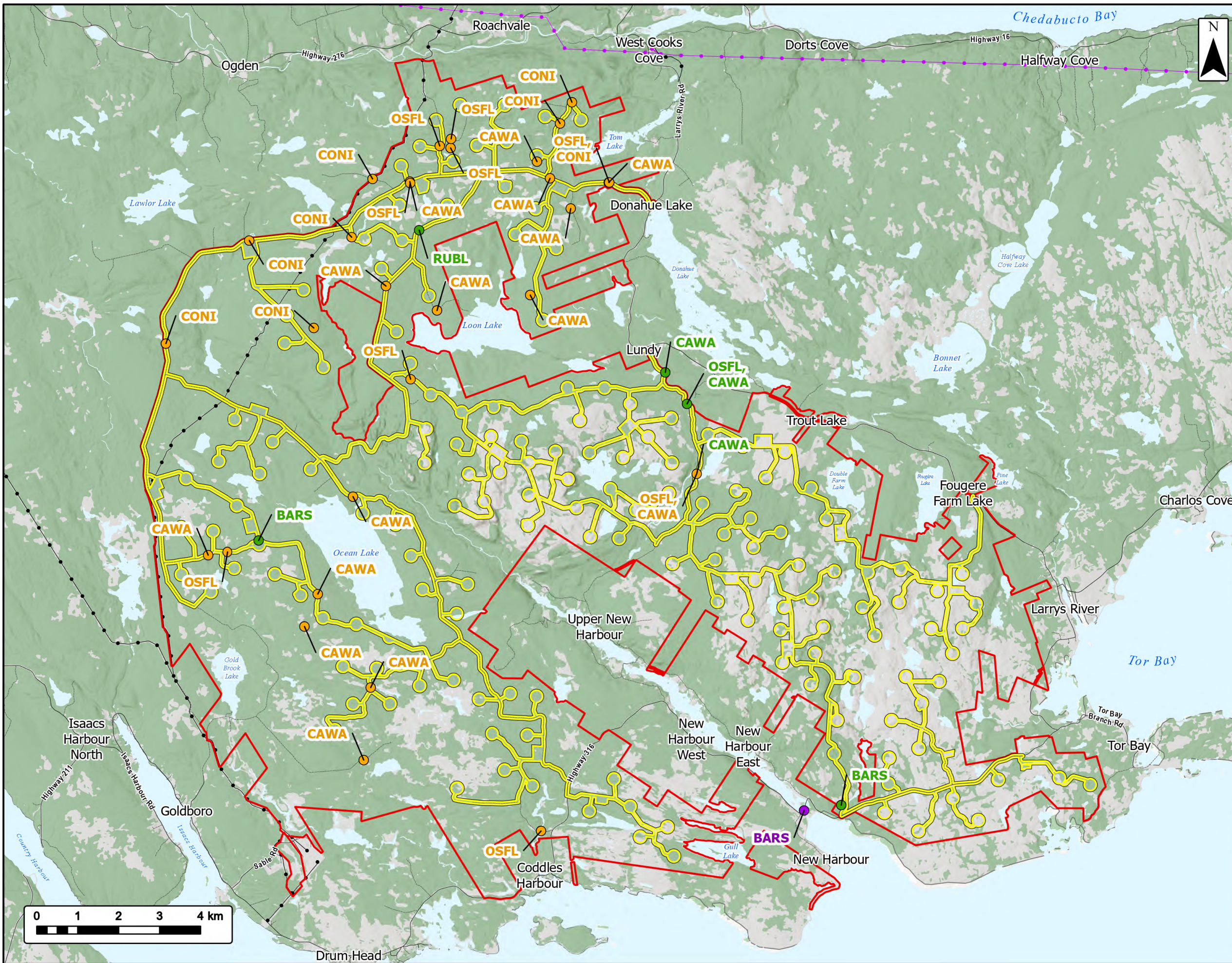
Study Area	
Assessment Area	
Potential Rusty Blackbird Breeding Habitat	
Transportation	
Road	
Unpaved Road	
Utilities (Line)	
Existing Pipeline	
Existing Transmission Lines	
Water Features	
Mapped Lakes and Rivers	



Coordinate System: NAD 1983 UTM Zone 20N
 Sources: Esri, NASA, NGA, USGS, Service Nova Scotia, GeoNOVA, SNGS, NSNRR, ACCDC, IBA Canada, CNWL, HERE, Garmin, USGS

Date: 2026-04-24	Project #: 25-12648
Scale: 1:90,000	Drawing #: 10.18
Drawn By: P. Opra	
Checked By: A. Doane	





Ocean Lake Wind Project

Avian SAR Observations



Study Area	
Assessment Area	
SAR Observation	
Breeding Bird Survey	
Fall Migration Survey	
Spring Migration Survey	
Transportation	
Road	
Unpaved Road	
Utilities (Line)	
Existing Pipeline	
Existing Transmission Lines	
Water Features	
Mapped Lakes and Rivers	

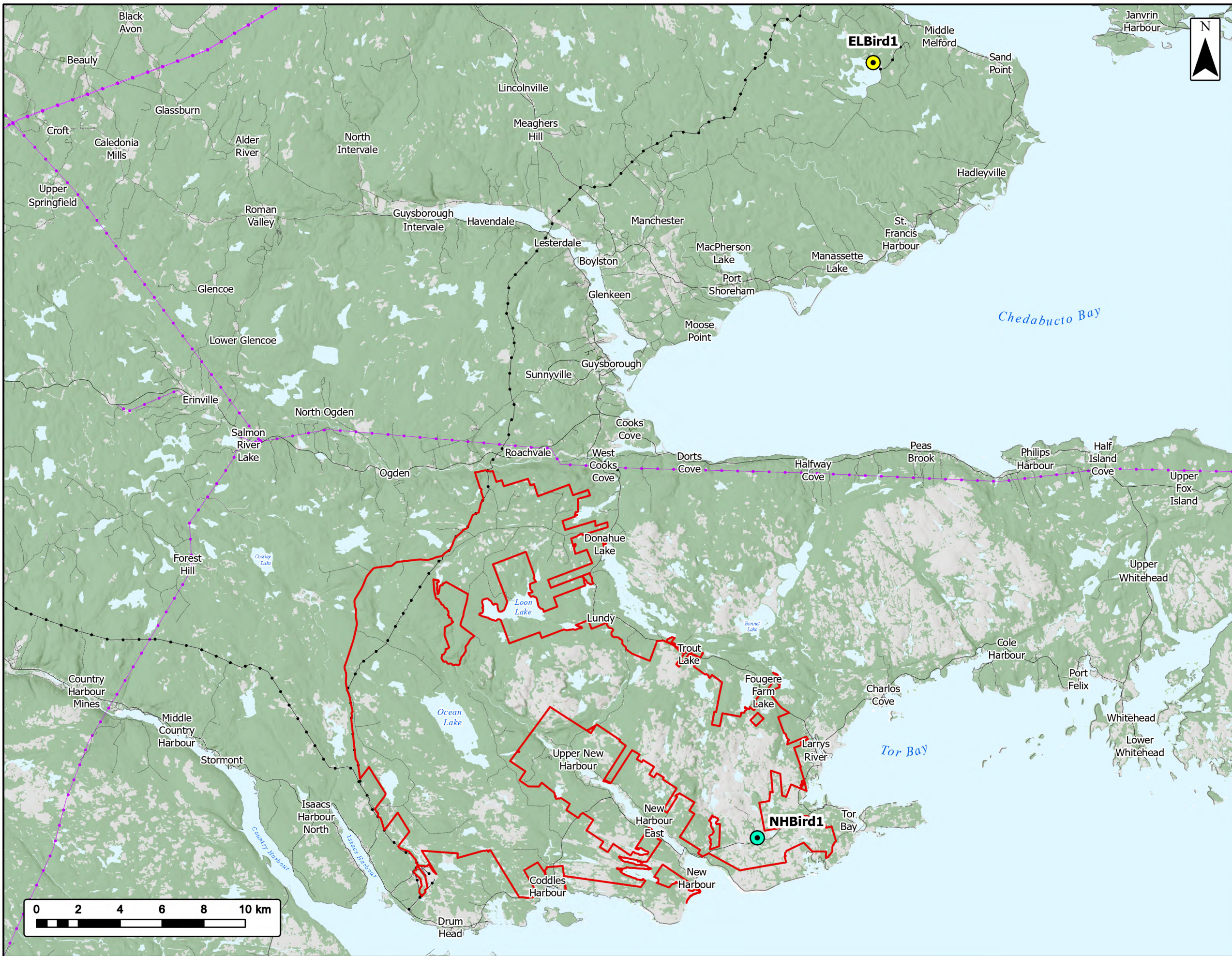
BARS = Barn swallow, CAWA = Canada warbler, CONI = Common nighthawk, OSFL = Olive-sided flycatcher, RUBL = Rusty Blackbird



Coordinate System: NAD 1983 UTM Zone 20N
 Sources: Esri, NASA, NGA, USGS, Service Nova Scotia, GeoNOVA, SNSIS, NSNRR, ACCDC, IBA Canada, CNWI, HERE, Garmin, USGS

Date:	2026-05-04	Project #:	25-12648
Scale:	1:90,000	Drawing #:	10.19
Drawn By:	K. Wallace		
Checked By:	A. Doane		





Ocean Lake Wind Project

Avian Radar & ARU Locations



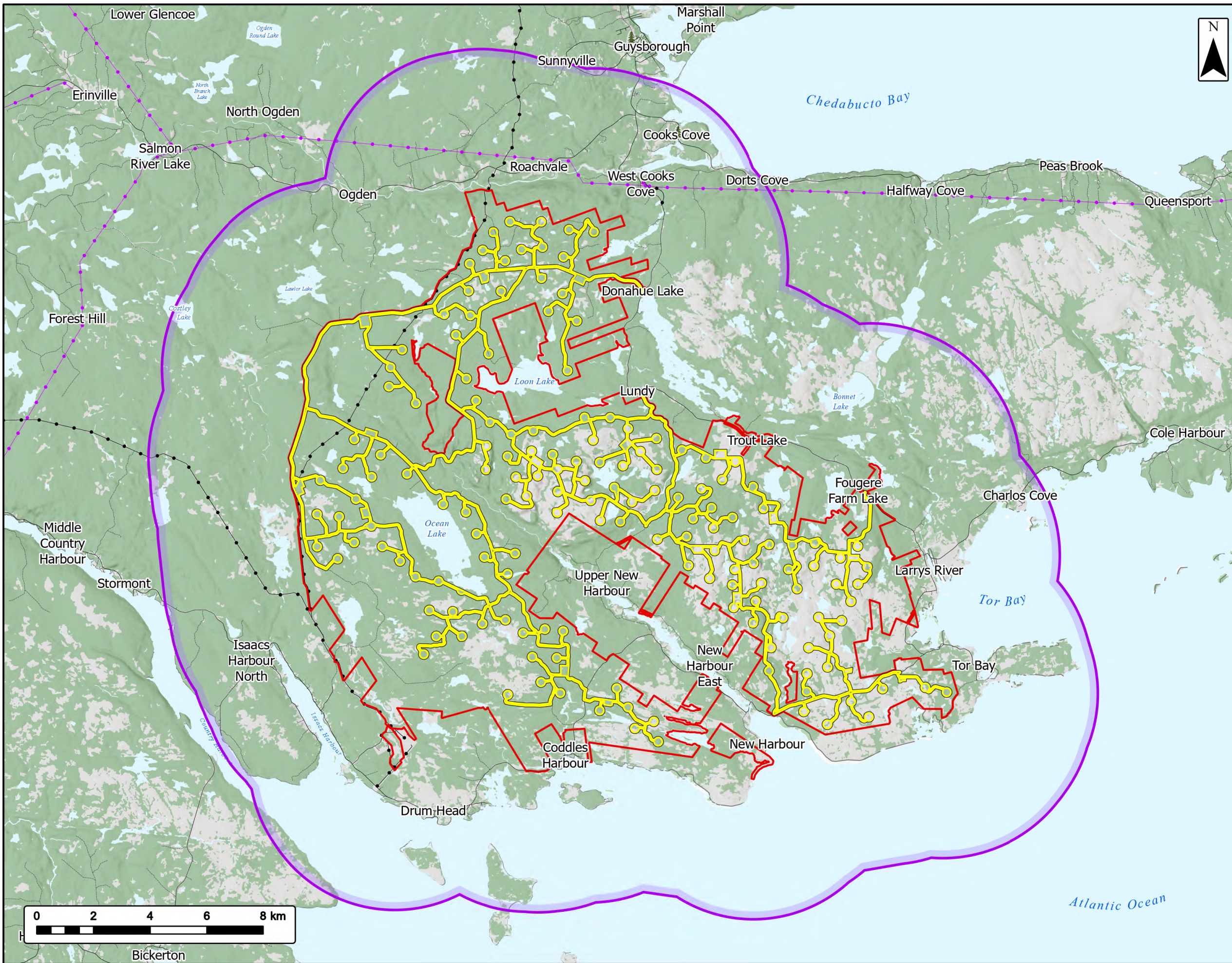
- Study Area
- Acoustic Monitor Location
- Radar and Acoustic Monitor Location
- Transportation**
- Road
- Unpaved Road
- Utilities (Line)**
- Existing Pipeline
- Existing Transmission Lines
- Water Features**
- Mapped Lakes and Rivers



Coordinate System: NAD 1983 UTM Zone 20N
Sources: Esri, NASA, NGA, USGS, Service Nova Scotia, GeoNOVA, SNSIS, NSNRR, ACCDC, IBA Canada, CNWI, HERE, Garmin, USGS

Date: 2026-05-04	Project #: 25-12648
Scale: 1:175,000	10.20
Drawn By: M. Partridge	
Checked By: A. Doane	





Ocean Lake Wind Project

Avifauna LAA

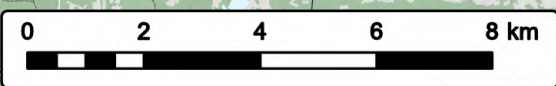


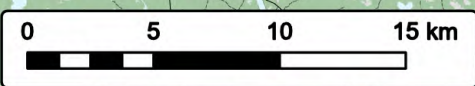
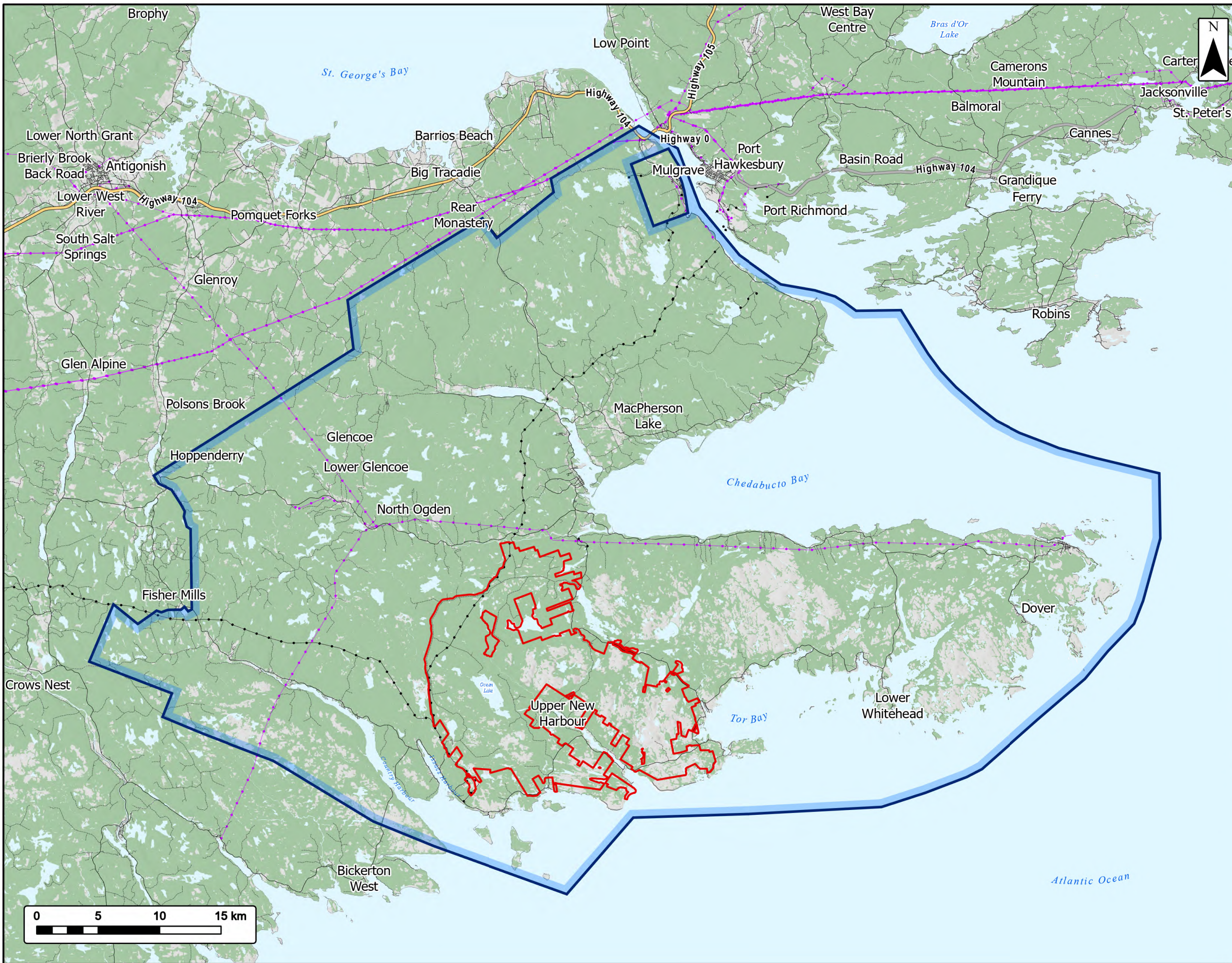
Study Area	
Assessment Area	
Avifauna Local Assessment Area (LAA)	
Transportation	
Road	
Unpaved Road	
Utilities (Line)	
Existing Pipeline	
Existing Transmission Lines	
Water Features	
Mapped Lakes and Rivers	



Coordinate System: NAD 1983 UTM Zone 20N
Sources: Esri, NASA, NGA, USGS, Service Nova Scotia, GeoNOVA, SNSIS, NSNRR, ACCDC, IBA Canada, CNWI, HERE, Garmin, USGS

Date:	2026-05-04	Project #:	25-12648
Scale:	1:130,000	Drawing #:	10.21
Drawn By:	K. Wallace		
Checked By:	A. Doane		





Ocean Lake Wind Project

Socioeconomic LAA



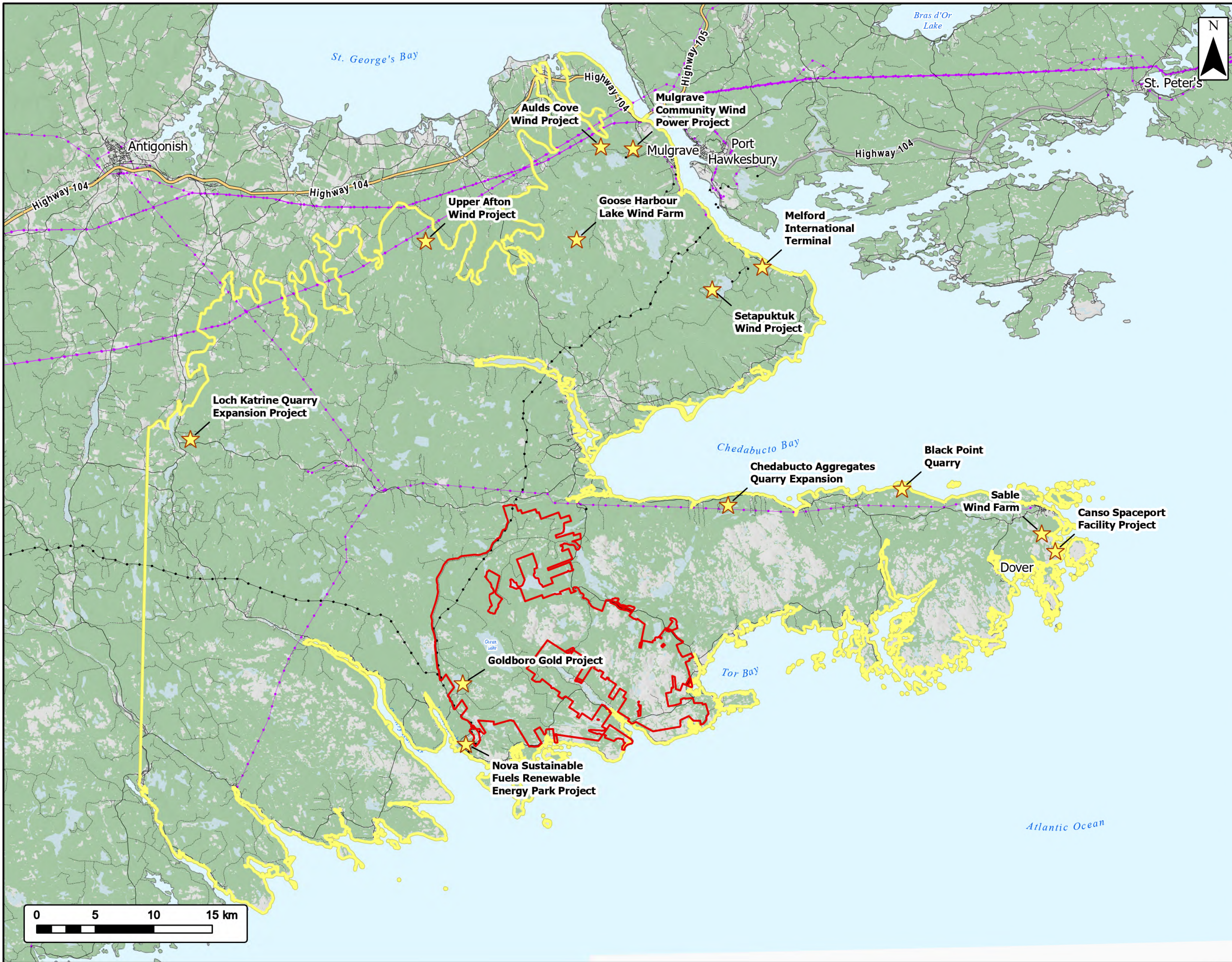
- Study Area
- Municipality of the District of Guysborough
- Transportation**
- Trans-Canada Highway
- Highway
- Road
- Unpaved Road
- Utilities (Line)**
- Existing Pipeline
- Existing Transmission Lines
- Water Features**
- Mapped Lakes and Rivers



Coordinate System: NAD 1983 UTM Zone 20N
Sources: Esri, NASA, NGA, USGS, Service Nova Scotia, GeoNOVA, SNSIS, NSNRR, ACCDC, IBA Canada, CNWI, HERE, Garmin, USGS

Date: 2026-05-04	Project #: 25-12648
Scale: 1:300,000	<h1>11.1</h1>
Drawn By: K. Wallace	
Checked By: A. Doane	





Ocean Lake Wind Project

Cumulative Effects



Study Area	
Regional Assessment Area (RAA)	
Nearby Project Locations	
Transportation	
Trans-Canada Highway	
Highway	
Road	
Unpaved Road	
Utilities (Line)	
Existing Pipeline	
Existing Transmission Lines	
Water Features	
Mapped Lakes and Rivers	



Coordinate System: NAD 1983 UTM Zone 20N
Sources: Esri, NASA, NGA, USGS, Service Nova Scotia, GeoNOVA, SNSIS, NSNRR, ACCDC, IBA Canada, CNWI, HERE, Garmin, USGS

Date:	2026-05-04	Project #:	25-12648
Scale:	1:315,000	Drawing #:	16.1
Drawn By:	K. Wallace		
Checked By:	A. Doane		

