

Ocean Lake Wind Project

Analysis of Edge Effects

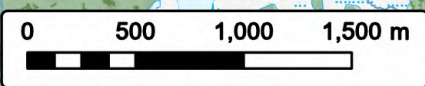


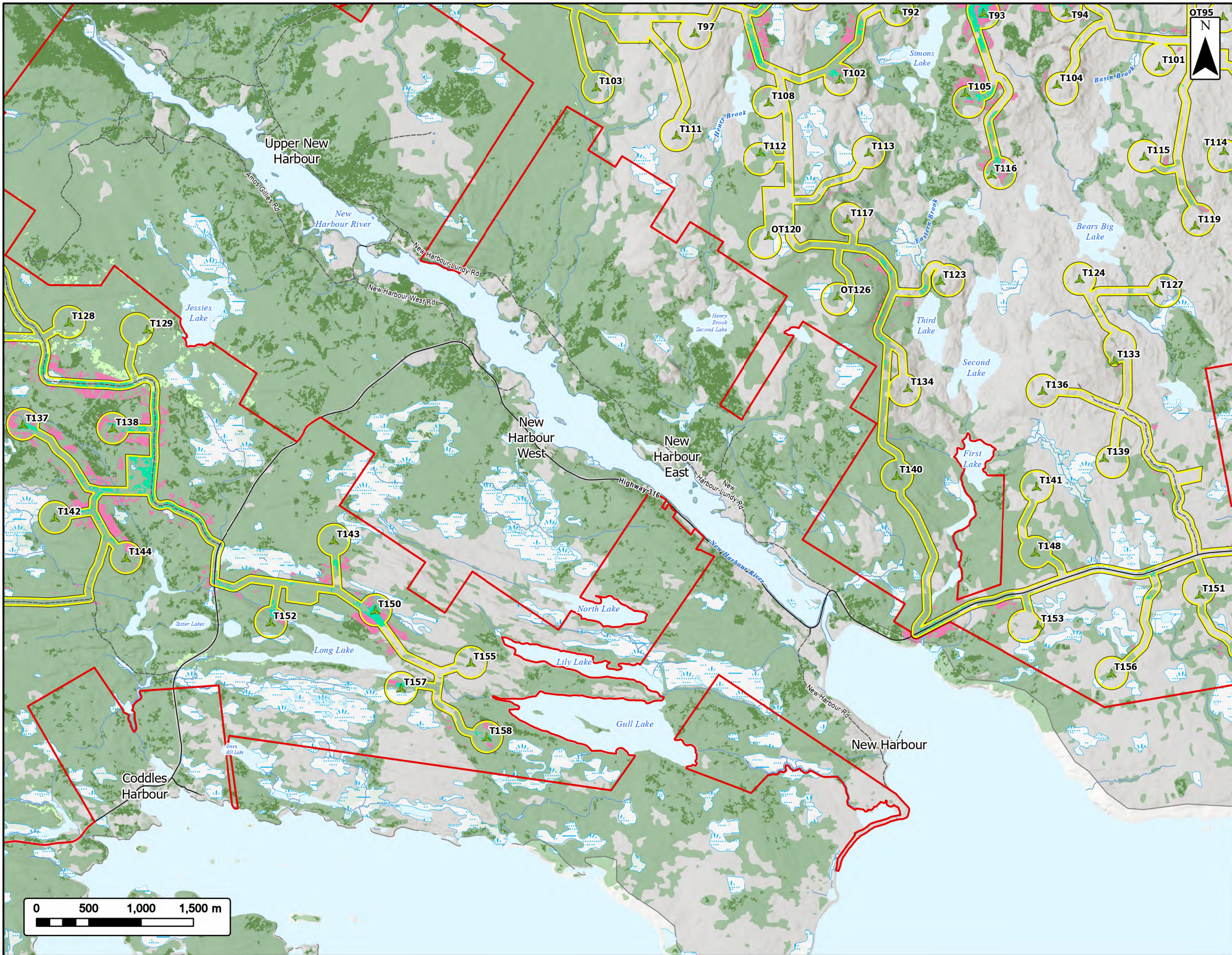
Study Area	
Assessment Area	
Proposed Turbine Locations	
New Edge Effect	
Intact Forest Unaffected	
Existing Edge Effect	
Direct Loss	
Transportation	
Road	
Unpaved Road	
Utilities (Line)	
Existing Pipeline	
Water Features	
Mapped Watercourses	
Mapped Lakes and Rivers	
Mapped Wetlands	



Coordinate System: NAD 1983 UTM Zone 20N
 Sources: Esri, NASA, NGA, USGS, Service Nova Scotia, GeoNOVA, SNSIS, NSNRR, ACCDC, IBA Canada, CNWI, HERE, Garmin, USGS

Date:	2026-05-04	Project #:	25-12648
Scale:	1:35,000	Drawing #:	10.4B
Drawn By:	P. Opra		
Checked By:	A. Doane		





Ocean Lake Wind Project

Analysis of Edge Effects



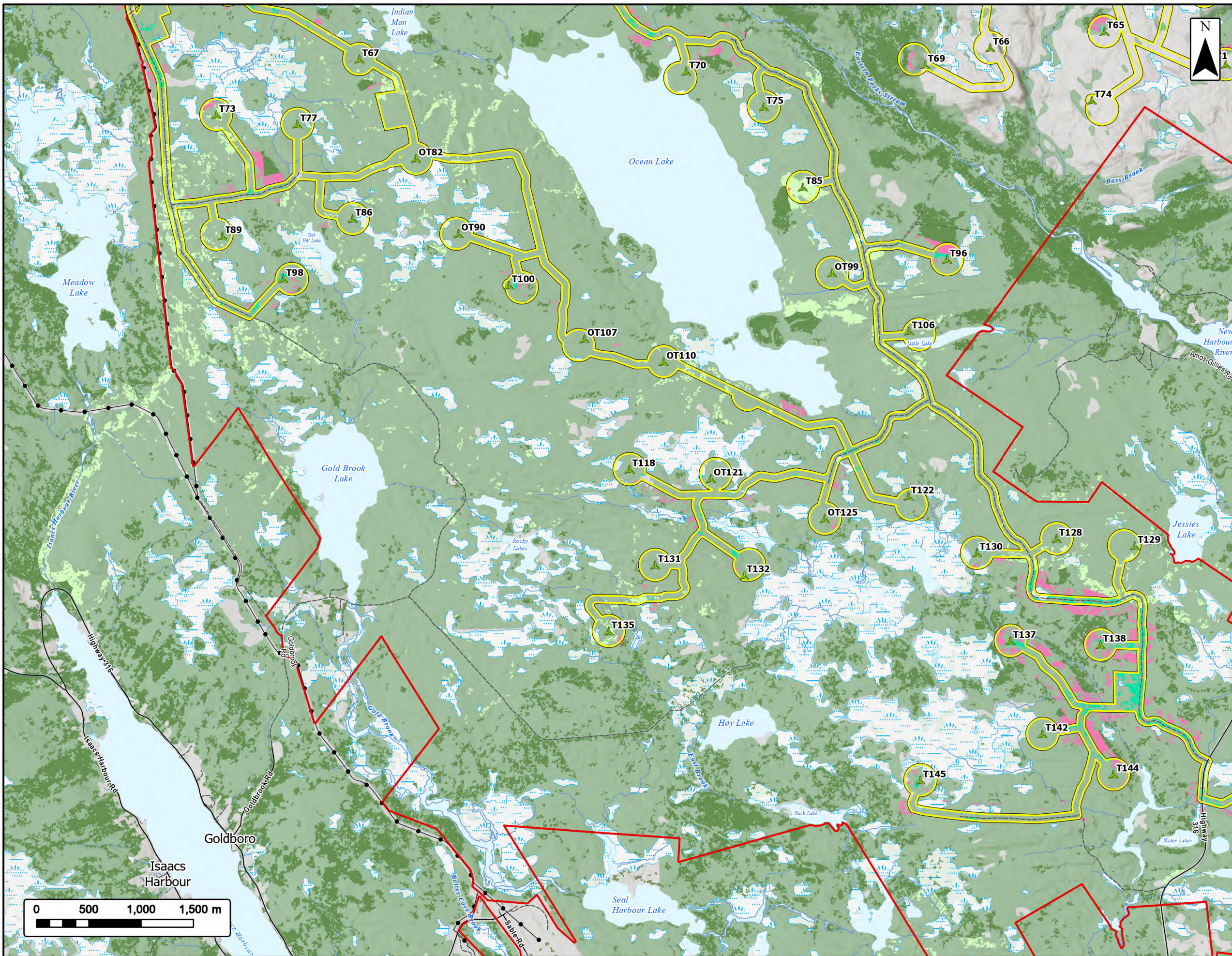
- Study Area
- Assessment Area
- Proposed Turbine Locations
- New Edge Effect
- Intact Forest Unaffected
- Existing Edge Effect
- Direct Loss
- Transportation**
- Road
- Unpaved Road
- Water Features**
- Mapped Watercourses
- Mapped Lakes and Rivers
- Mapped Wetlands



Coordinate System: NAD 1983 UTM Zone 20N
 Sources: Esri, NASA, NGA, USGS, Service Nova Scotia, GeoNOVA, SNSIS, NSNRR, ACCDC, IBA Canada, CNWI, HERE, Garmin, USGS

Date: 2026-05-04	Project #: 25-12648
Scale: 1:35,000	<h1>10.4C</h1>
Drawn By: P. Opra	
Checked By: A. Doane	





Ocean Lake Wind Project

Analysis of Edge Effects



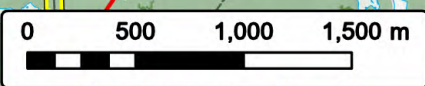
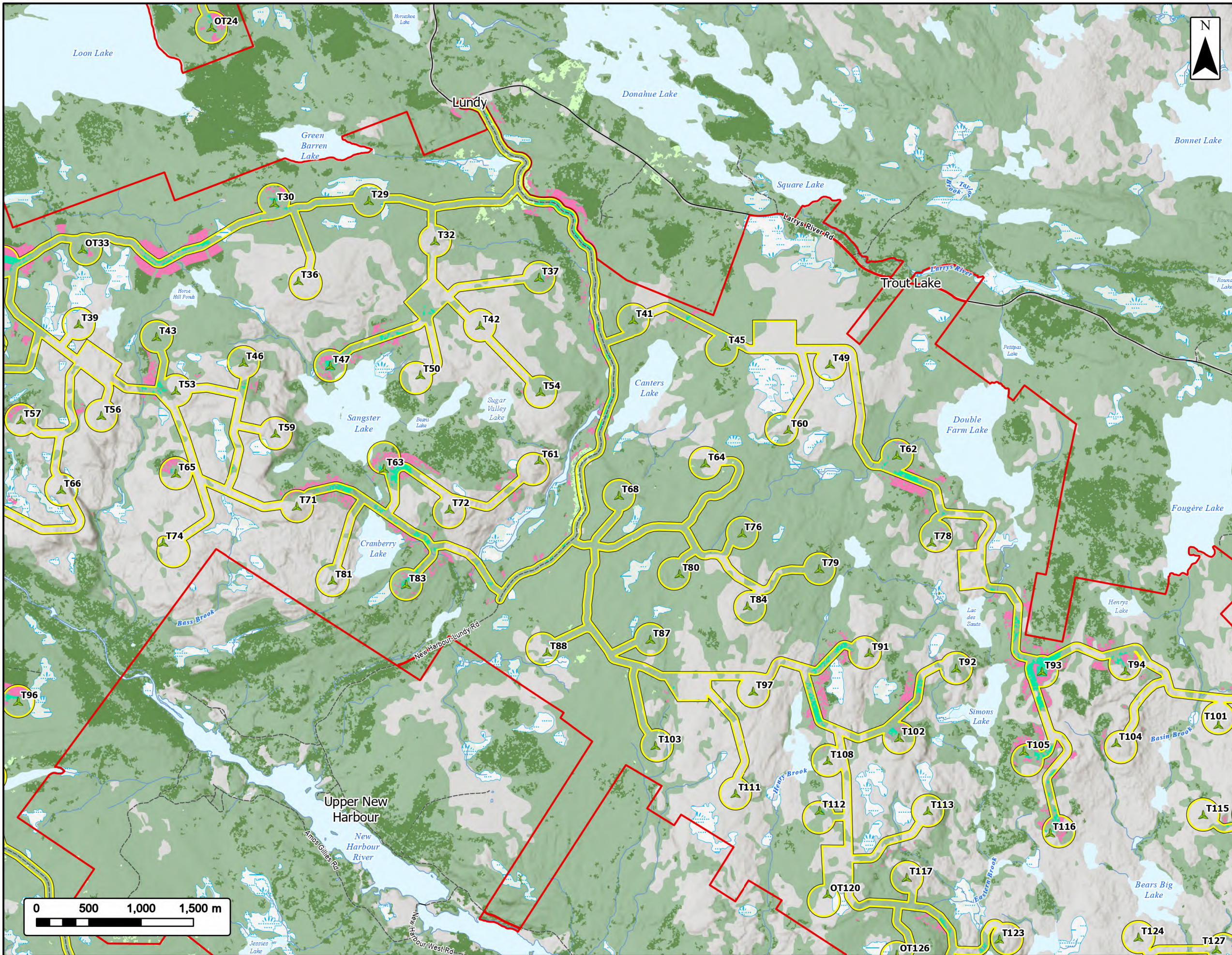
- Study Area
- Assessment Area
- Proposed Turbine Locations
- New Edge Effect
- Intact Forest Unaffected
- Existing Edge Effect
- Direct Loss
- Transportation**
- Road
- Unpaved Road
- Utilities (Line)**
- Existing Pipeline
- Water Features**
- Mapped Watercourses
- Mapped Lakes and Rivers
- Mapped Wetlands



Coordinate System: NAD 1983 UTM Zone 20N
 Sources: Esri, NASA, NGA, USGS, Service Nova Scotia, GeoNOVA, SNSIS, NSNRR, ACCDC, IBA Canada, CNWI, HERE, Garmin, USGS

Date: 2026-05-04	Project #: 25-12648
Scale: 1:35,000	<h2>10.4D</h2>
Drawn By: P. Opra	
Checked By: A. Doane	





Ocean Lake Wind Project

Analysis of Edge Effects



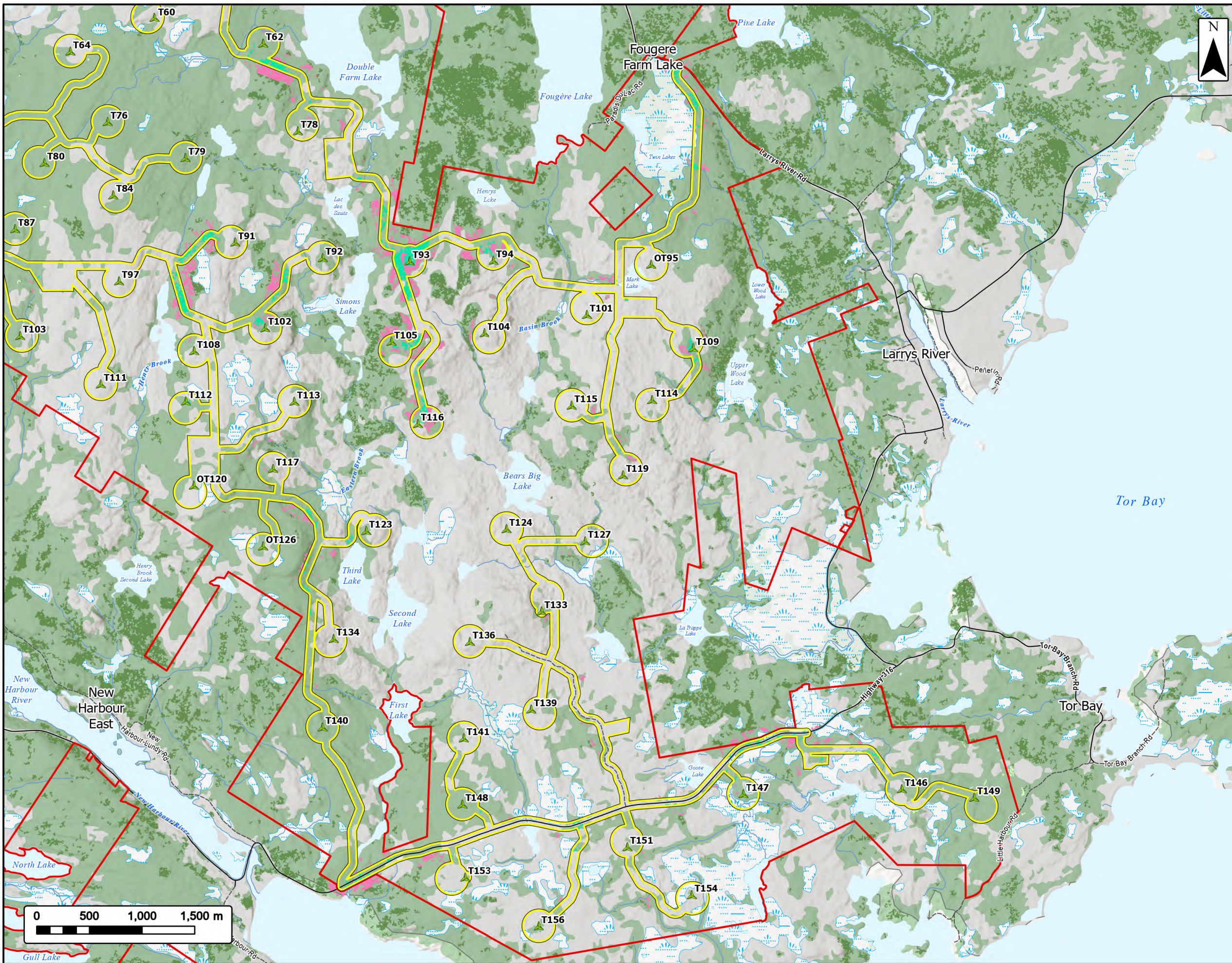
Study Area	
Assessment Area	
Proposed Turbine Locations	
New Edge Effect	
Intact Forest Unaffected	
Existing Edge Effect	
Direct Loss	
Transportation	
Road	
Unpaved Road	
Water Features	
Mapped Watercourses	
Mapped Lakes and Rivers	
Mapped Wetlands	



Coordinate System: NAD 1983 UTM Zone 20N
 Sources: Esri, NASA, NGA, USGS, Service Nova Scotia, GeoNOVA, SNSIS, NSNRR, ACCDC, IBA Canada, CNWI, HERE, Garmin, USGS

Date:	2026-05-04	Project #:	25-12648
Scale:	1:35,000	Drawing #:	10.4E
Drawn By:	P. Opra		
Checked By:	A. Doane		





Ocean Lake Wind Project

Analysis of Edge Effects



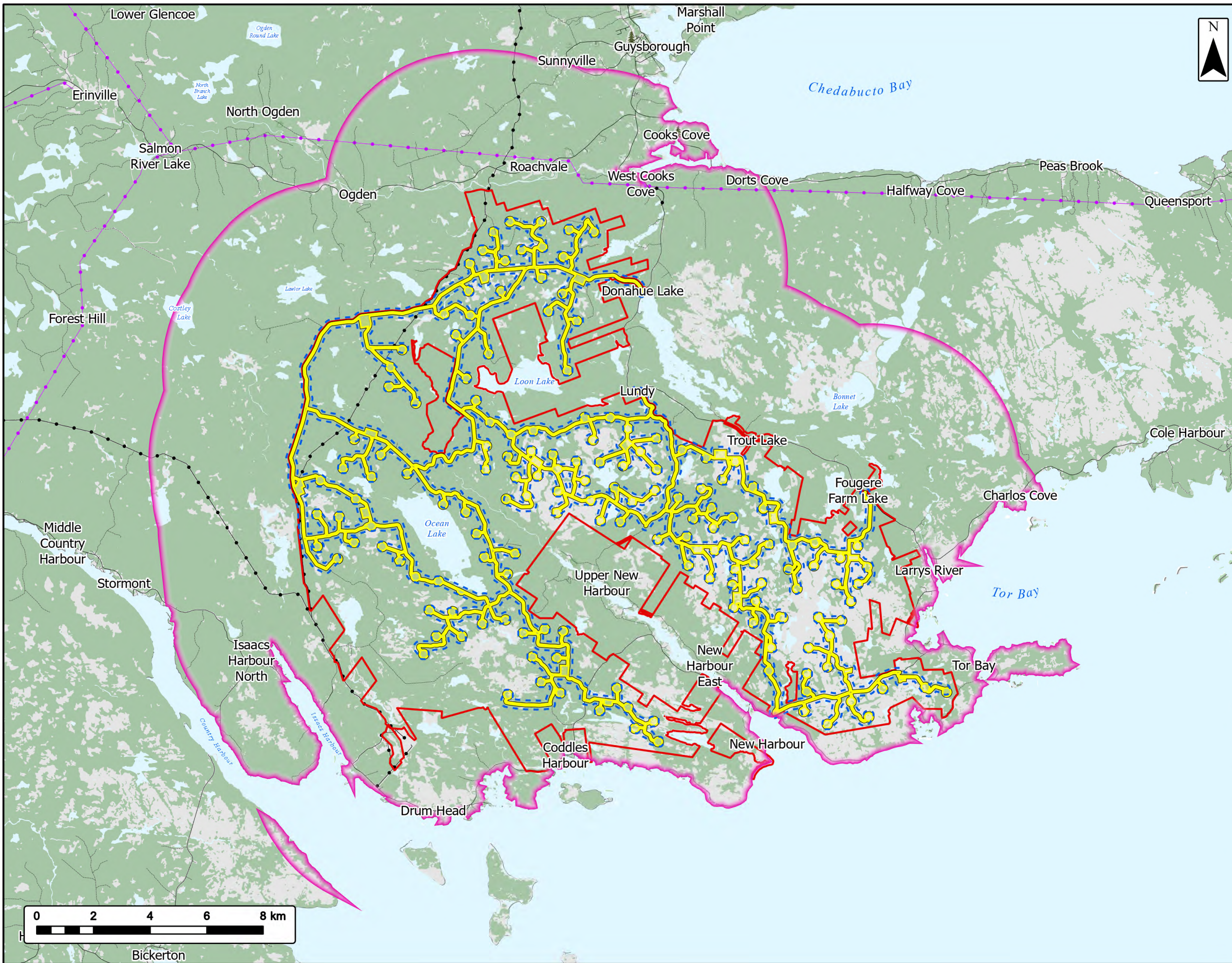
Study Area	
Assessment Area	
Proposed Turbine Locations	
New Edge Effect	
Intact Forest Unaffected	
Existing Edge Effect	
Direct Loss	
Transportation	
Road	
Unpaved Road	
Water Features	
Mapped Watercourses	
Mapped Lakes and Rivers	
Mapped Wetlands	



Coordinate System: NAD 1983 UTM Zone 20N
 Sources: Esri, NASA, NGA, USGS, Service Nova Scotia, GeoNOVA, SNSIS, NSNRR, ACCDC, IBA Canada, CNWI, HERE, Garmin, USGS

Date:	2026-05-04	Project #:	25-12648
Scale:	1:35,000	Drawing #:	10.4F
Drawn By:	P. Opra		
Checked By:	A. Doane		





Ocean Lake Wind Project

Terrestrial Vegetation Communities, Flora, and Fauna
Spatial Boundaries



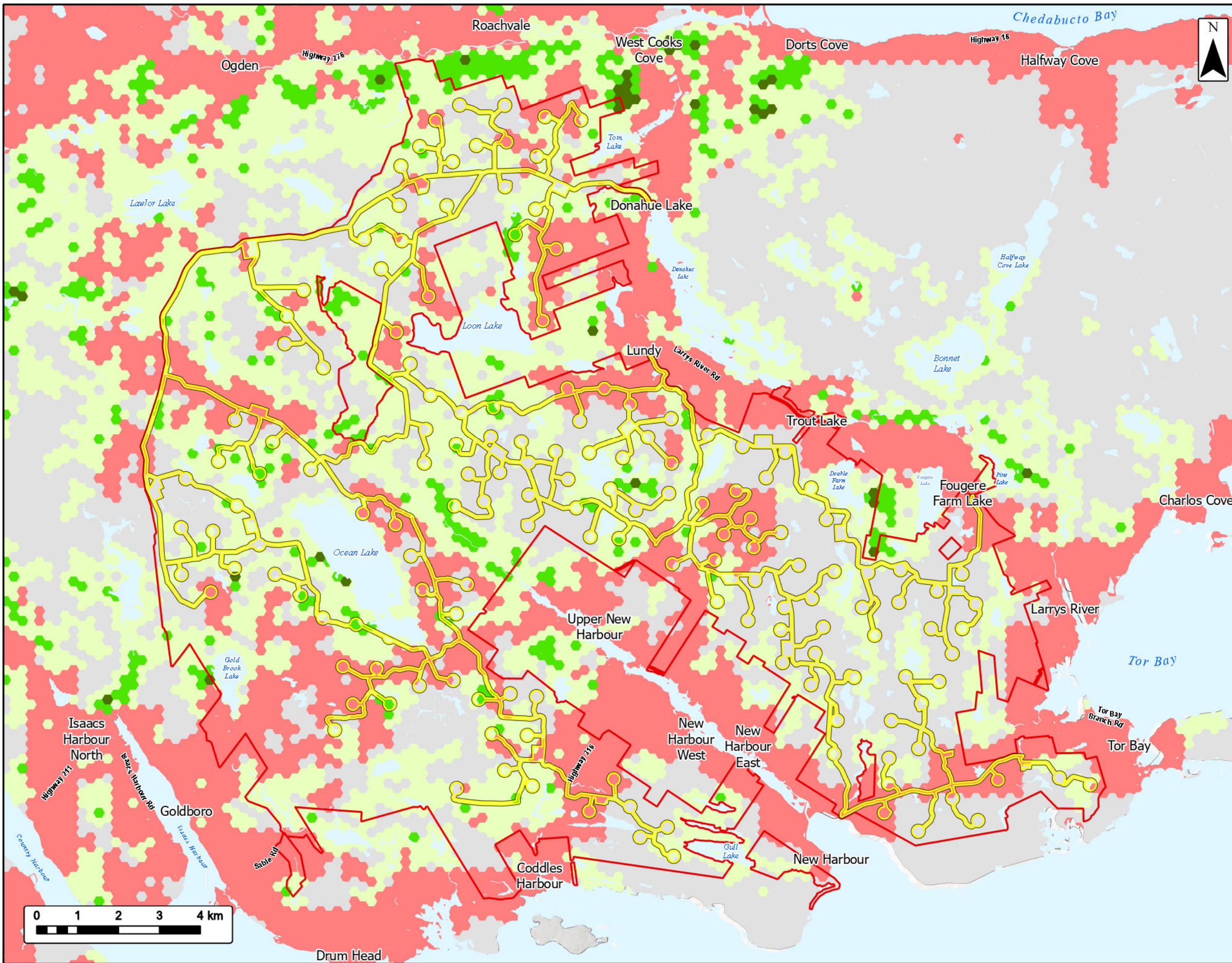
Study Area	
Assessment Area	
Flora Local Assessment Area (LAA)	
Flora Regional Assessment Area (RAA) / Fauna Local Assessment Area (LAA)	
Transportation	
Road	
Unpaved Road	
Utilities (Line)	
Existing Pipeline	
Existing Transmission Lines	
Water Features	
Mapped Lakes and Rivers	



Coordinate System: NAD 1983 UTM Zone 20N
Sources: Service Nova Scotia, GeoNOVA, SNSIS, NSNRR, ACCDC, IBA Canada, CNWI, HERE, Garmin, USGS

Date: 2026-05-01	Project #: 25-12648
Scale: 1:130,000	Drawing #: 10.5
Drawn By: K. Wallace	
Checked By: A. Doane	





Ocean Lake Wind Project
Moose Habitat Suitability

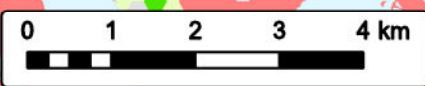


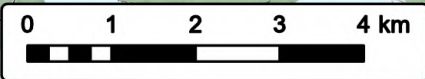
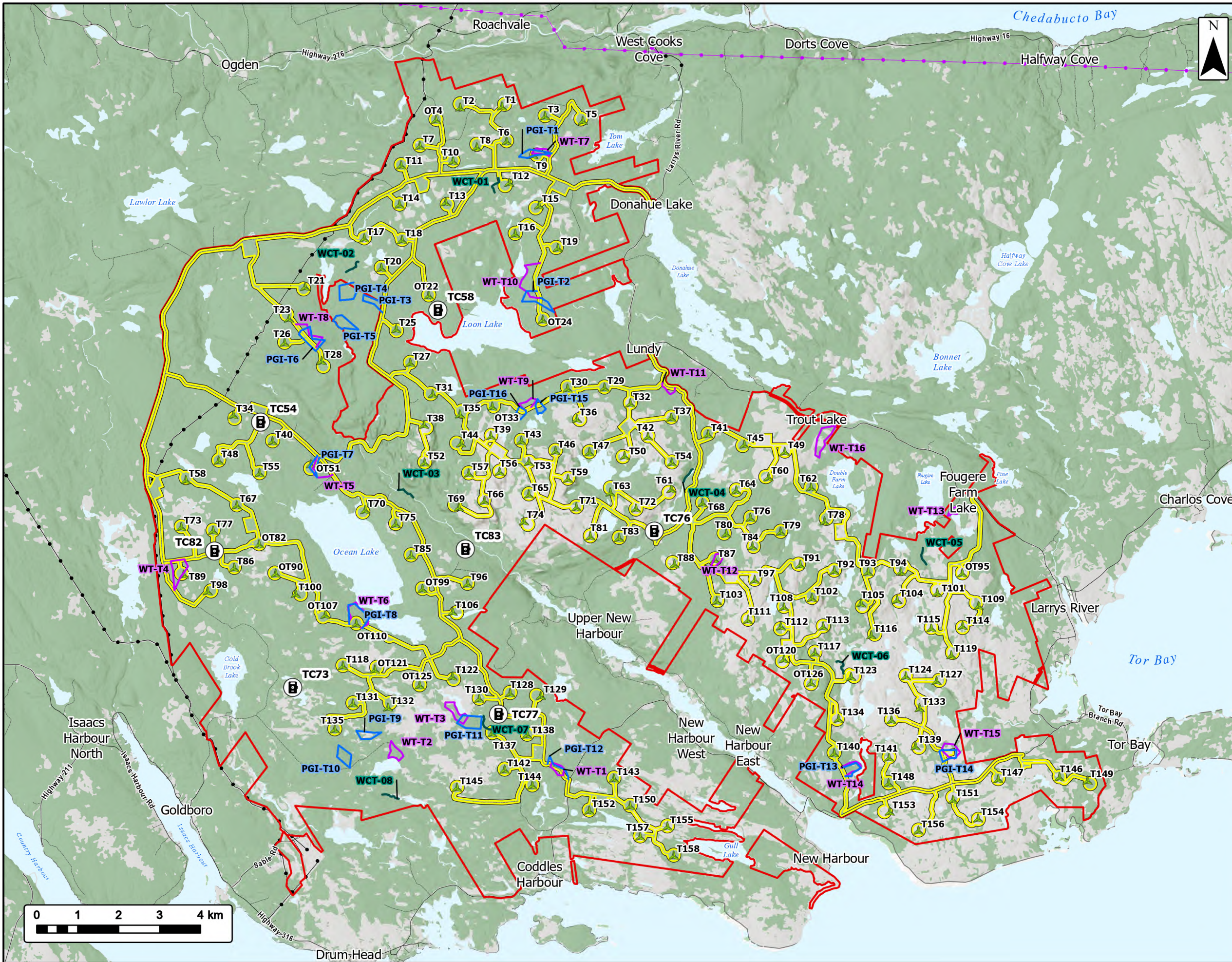
Study Area	
Assessment Area	
Moose Habitat Suitability Index	
Poor	
Neutral	
Fair	
Better	
Best	
Transportation	
Road	
Unpaved Road	
Utilities (Line)	
Existing Pipeline	
Existing Transmission Lines	
Water Features	
Mapped Lakes and Rivers	



Coordinate System: NAD 1983 UTM Zone 20N
Sources: Esri, NASA, NGA, USGS, GeoNOVA, SNSIS, NSNRR, ACCDC, IBA Canada, CNWL, HERE, Garmin, USGS

Date:	2026-04-24	Project #:	25-12648
Scale:	1:90,000	Drawing #:	10.6
Drawn By:	P. Opra		
Checked By:	A. Doane		





Ocean Lake Wind Project

Terrestrial Fauna Methodology



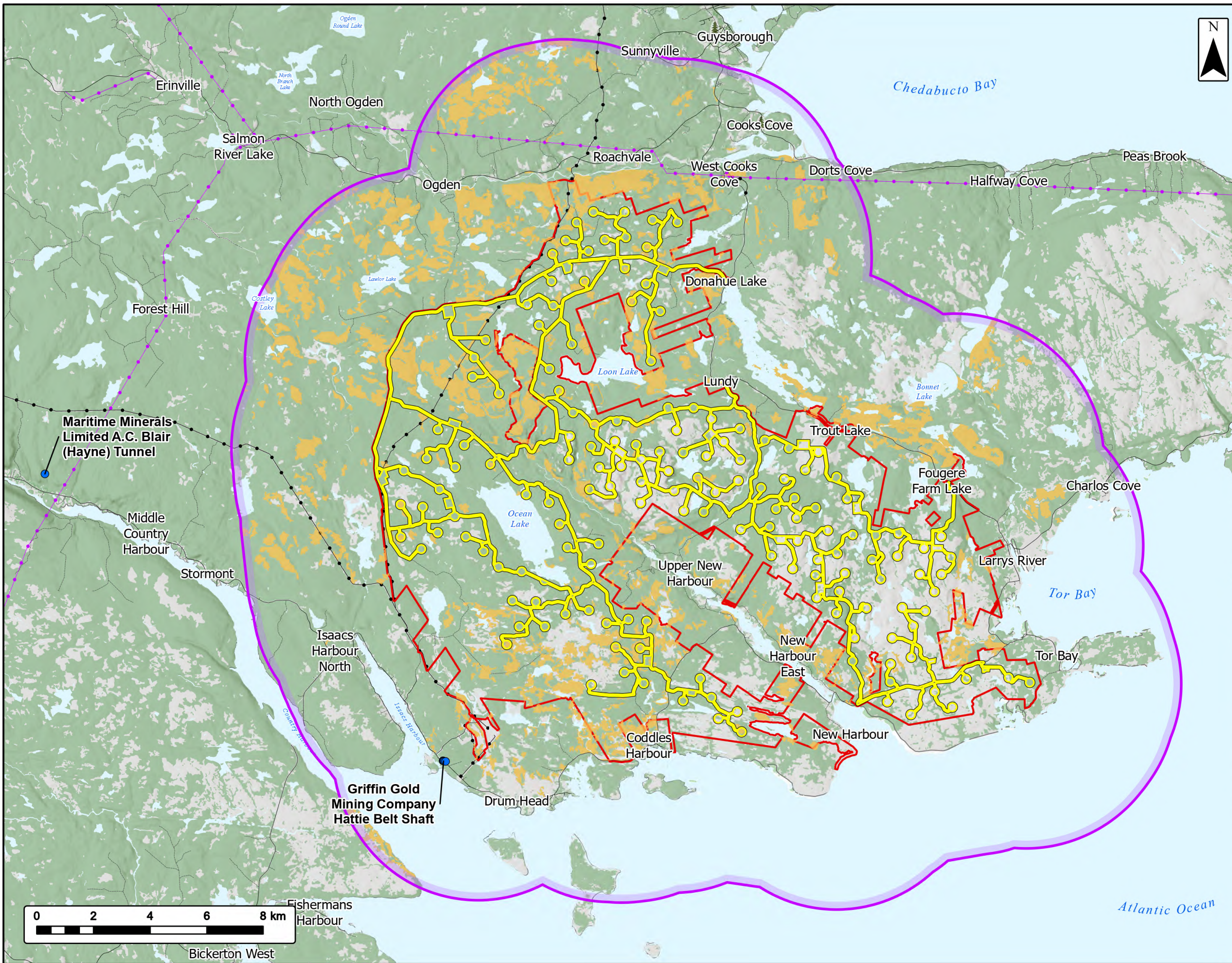
Study Area	
Assessment Area	
Proposed Turbine Locations	
Trail Camera Location	
PGI Transect	
Winter Tracking Transect	
Wood Turtle Transect	
Transportation	
Road	
Unpaved Road	
Utilities (Line)	
Existing Pipeline	
Existing Transmission Lines	
Water Features	
Mapped Lakes and Rivers	



Coordinate System: NAD 1983 UTM Zone 20N
 Sources: Esri, NASA, NGA, USGS, Service Nova Scotia, GeoNOVA, SNSIS, NSNRR, ACCDC, IBA Canada, CNWI, HERE, Garmin, USGS

Date:	2026-05-04	Project #:	25-12648
Scale:	1:90,000	Drawing #:	10.7
Drawn By:	K. Wallace		
Checked By:	A. Doane		





Ocean Lake Wind Project

Potential Bat Habitat



Study Area	
Assessment Area	
5 km Buffer of the Study Area	
Potential Maternity Roosting Habitat	
Potential Hibernation Habitat (AMOs)	
Transportation	
Road	
Unpaved Road	
Utilities (Line)	
Existing Pipeline	
Existing Transmission Lines	
Water Features	
Mapped Lakes and Rivers	



Coordinate System: NAD 1983 UTM Zone 20N
Sources: Esri, NASA, NGA, USGS, Service Nova Scotia, GeoNOVA, SNSIS, NSNRR, ACCDC, IBA Canada, CNWI, HERE, Garmin, USGS

Date:	2026-05-04	Project #:	25-12648
Scale:	1:130,000	Drawing #:	10.8
Drawn By:	K. Wallace		
Checked By:	A. Doane		

