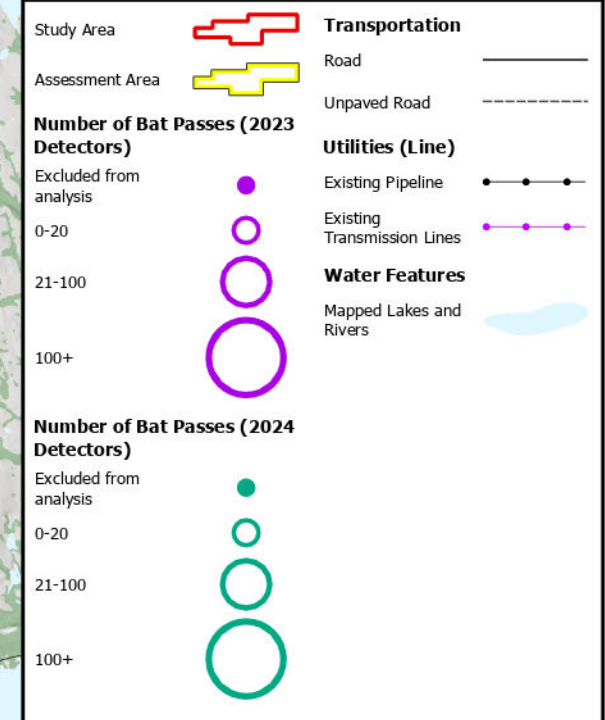


Ocean Lake Wind Project

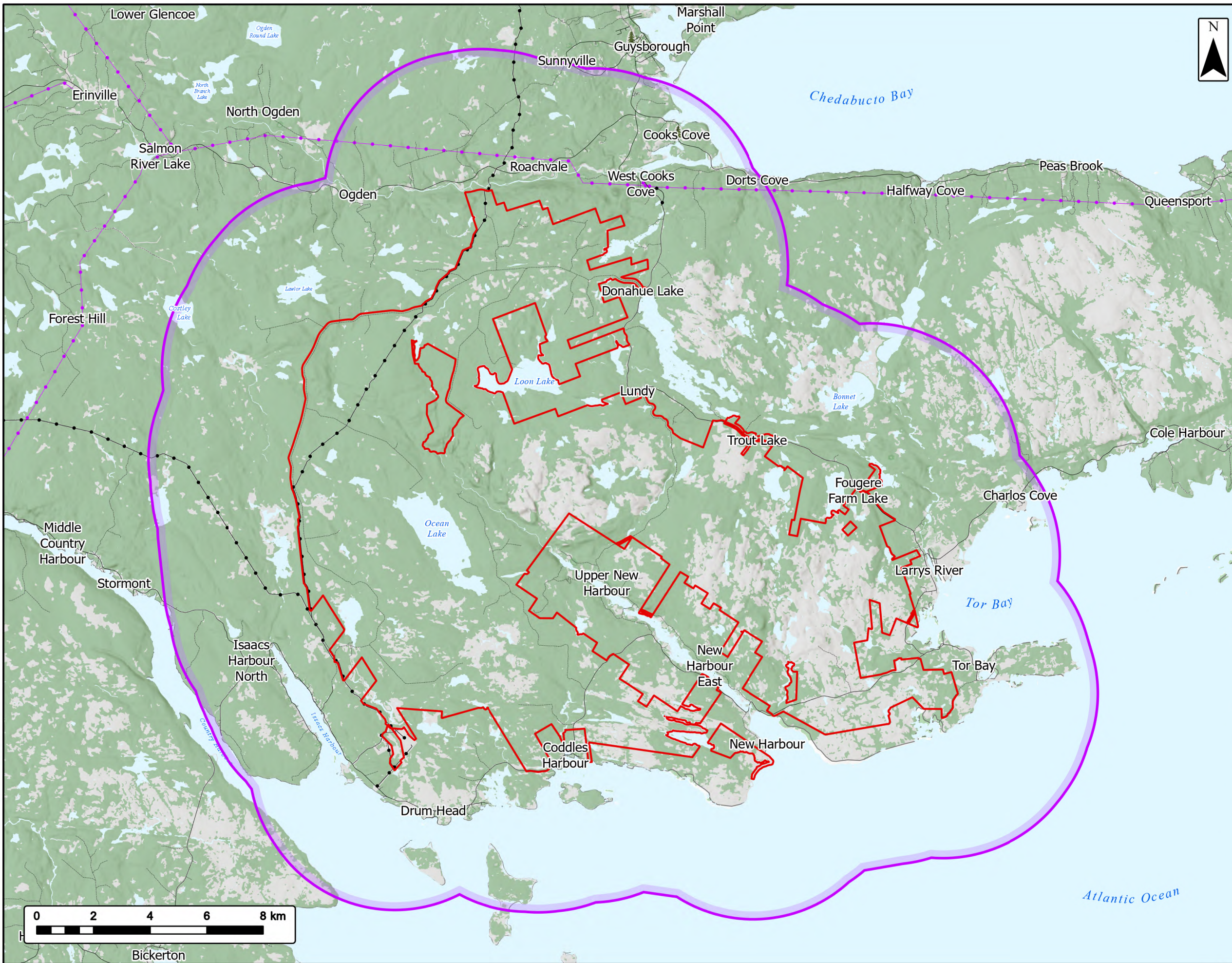
Bat Detectors and Relative Recorded Activity



Coordinate System: NAD 1983 UTM Zone 20N
 Sources: Esri, NASA, NGA, USGS, Service Nova Scotia, GeoNOVA, SNSIS, NSNRR, ACCDC, IBA Canada, CNWL, HERE, Garmin, USGS

Date:	2026-04-24	Project #:	25-12648
Scale:	1:90,000	Drawing #:	10.9
Drawn By:	K. Wallace		
Checked By:	A. Doane		





Ocean Lake Wind Project

Bat Local Assessment Area



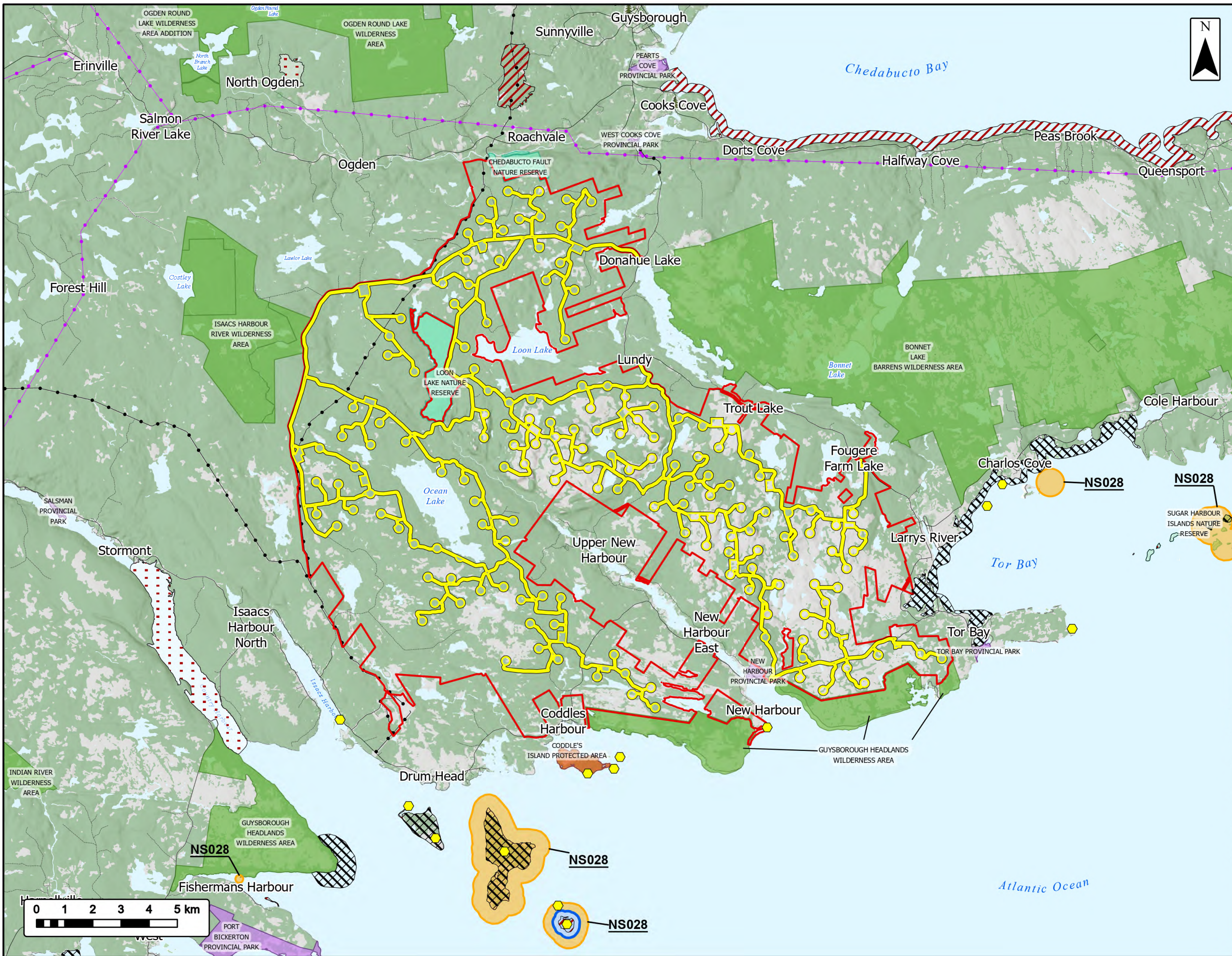
Study Area	
Bat Local Assessment Area (LAA)	
Transportation	
Road	
Unpaved Road	
Utilities (Line)	
Existing Pipeline	
Existing Transmission Lines	
Water Features	
Mapped Lakes and Rivers	



Coordinate System: NAD 1983 UTM Zone 20N
Sources: Esri, NASA, NGA, USGS, Service Nova Scotia, GeoNOVA, SNSIS, NSNRR, ACCDC, IBA Canada, CNWI, HERE, Garmin, USGS

Date:	2026-05-04	Project #:	25-12648
Scale:	1:130,000	Drawing #:	10.10
Drawn By:	K. Wallace		
Checked By:	A. Doane		





Ocean Lake Wind Project

Avifauna Desktop Review

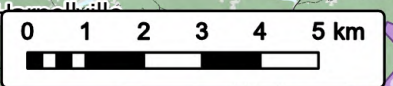


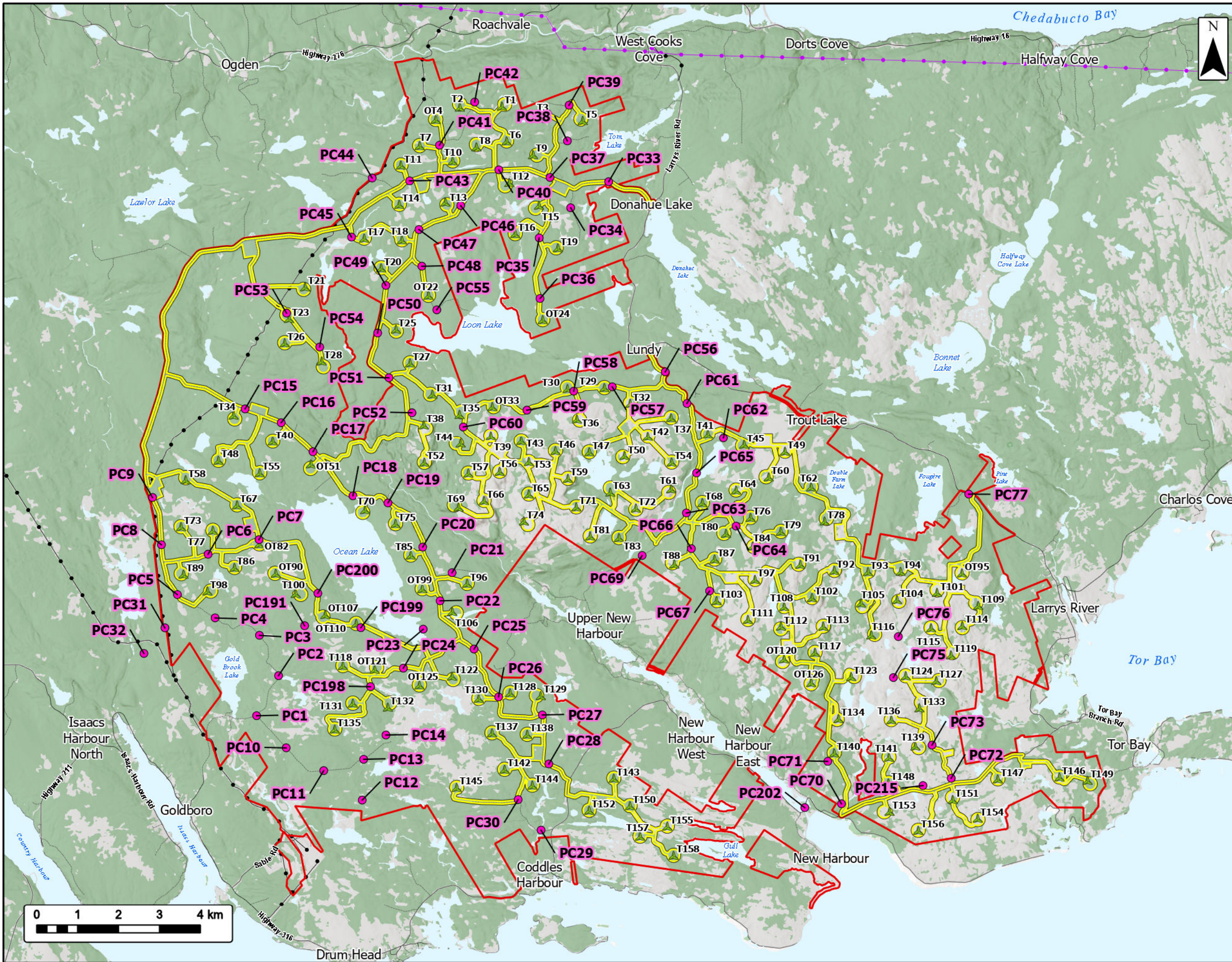
- | | | | |
|---|--|-----------------------------|--|
| Study Area | | Transportation | |
| Assessment Area | | Road | |
| Atlantic Waterbird Colony | | Unpaved Road | |
| Nature Reserve | | Utilities (Line) | |
| Protected Area | | Existing Pipeline | |
| Provincial Park | | Existing Transmission Lines | |
| Wilderness Area | | Water Features | |
| Important Bird Area (IBA) | | Mapped Lakes and Rivers | |
| Critical Habitat Area | | | |
| Significant Species and Habitats | | | |
| Migratory Bird | | | |
| Species at Risk | | | |
| Species of Concern | | | |



Coordinate System: NAD 1983 UTM Zone 20N
 Sources: Esri, NASA, NGA, USGS, Service Nova Scotia, GeoNOVA, SNSIS, NSNRR, ACCDC, IBA Canada, CNWI, HERE, Garmin, USGS

Date:	2026-05-04	Project #:	25-12648
Scale:	1:130,000	Drawing #:	10.11
Drawn By:	K. Wallace		
Checked By:	A. Doane		





Ocean Lake Wind Project

Avifauna Point Count Surveys



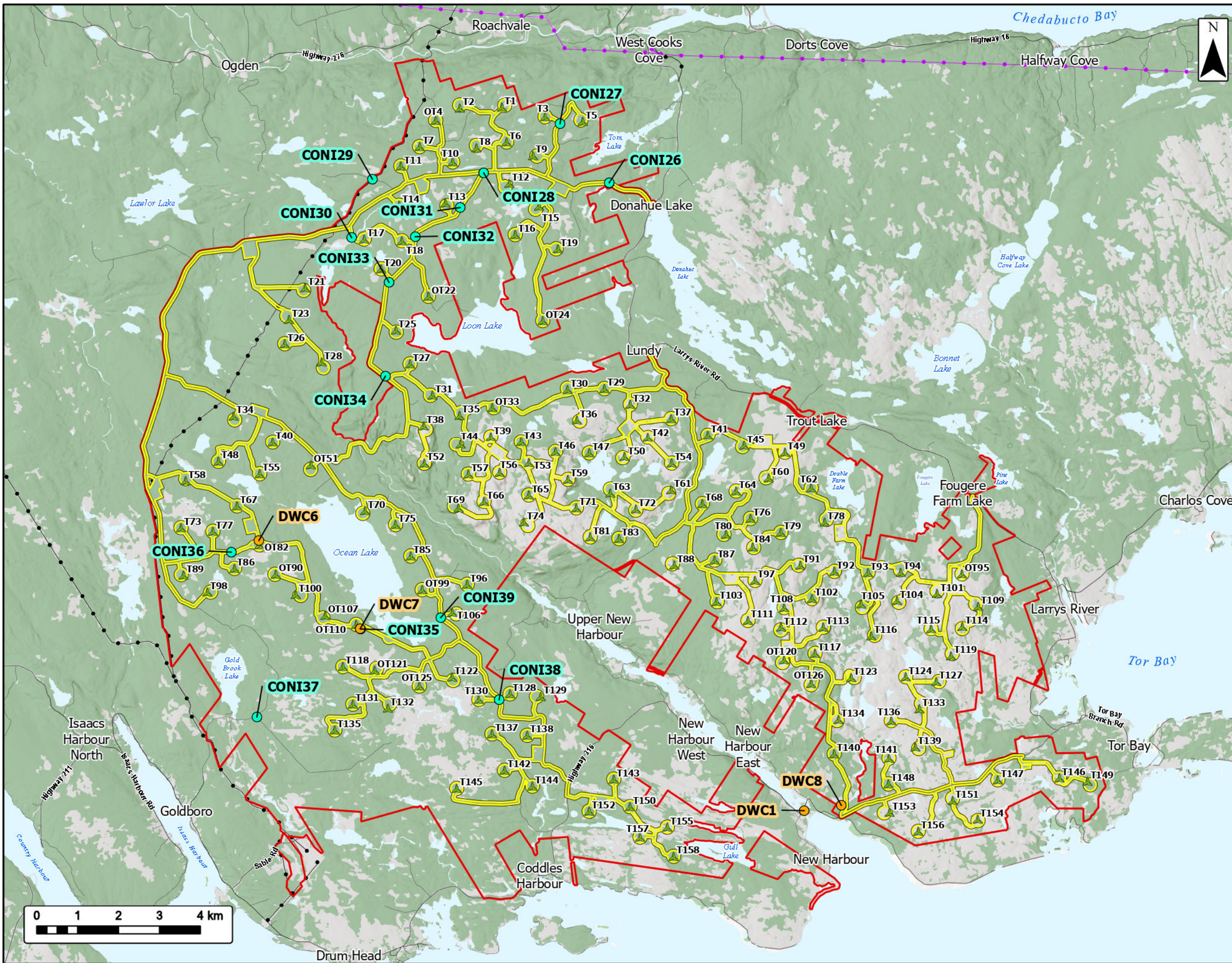
Study Area	
Assessment Area	
Proposed Turbine Locations	
Point Count Location	
Transportation	
Road	
Unpaved Road	
Utilities (Line)	
Existing Pipeline	
Existing Transmission Lines	
Water Features	
Mapped Lakes and Rivers	



Coordinate System: NAD 1983 UTM Zone 20N
 Sources: Esri, NASA, NGA, USGS, Service Nova Scotia, GeoNOVA, SNGS, NSNRR, ACCDC, IBA Canada, CNWL, HERE, Garmin, USGS

Date:	2026-04-24	Project #:	25-12648
Scale:	1:90,000	Drawing #:	10.12
Drawn By:	K. Wallace		
Checked By:	A. Doane		





Ocean Lake Wind Project

Avifauna Nightjar and Diurnal Watch Count Surveys

Study Area

Assessment Area

Proposed Turbine Locations

Nightjar Survey Location

Diurnal Watch Count Location

Transportation

Road

Unpaved Road

Utilities (Line)

Existing Pipeline

Existing Transmission Lines

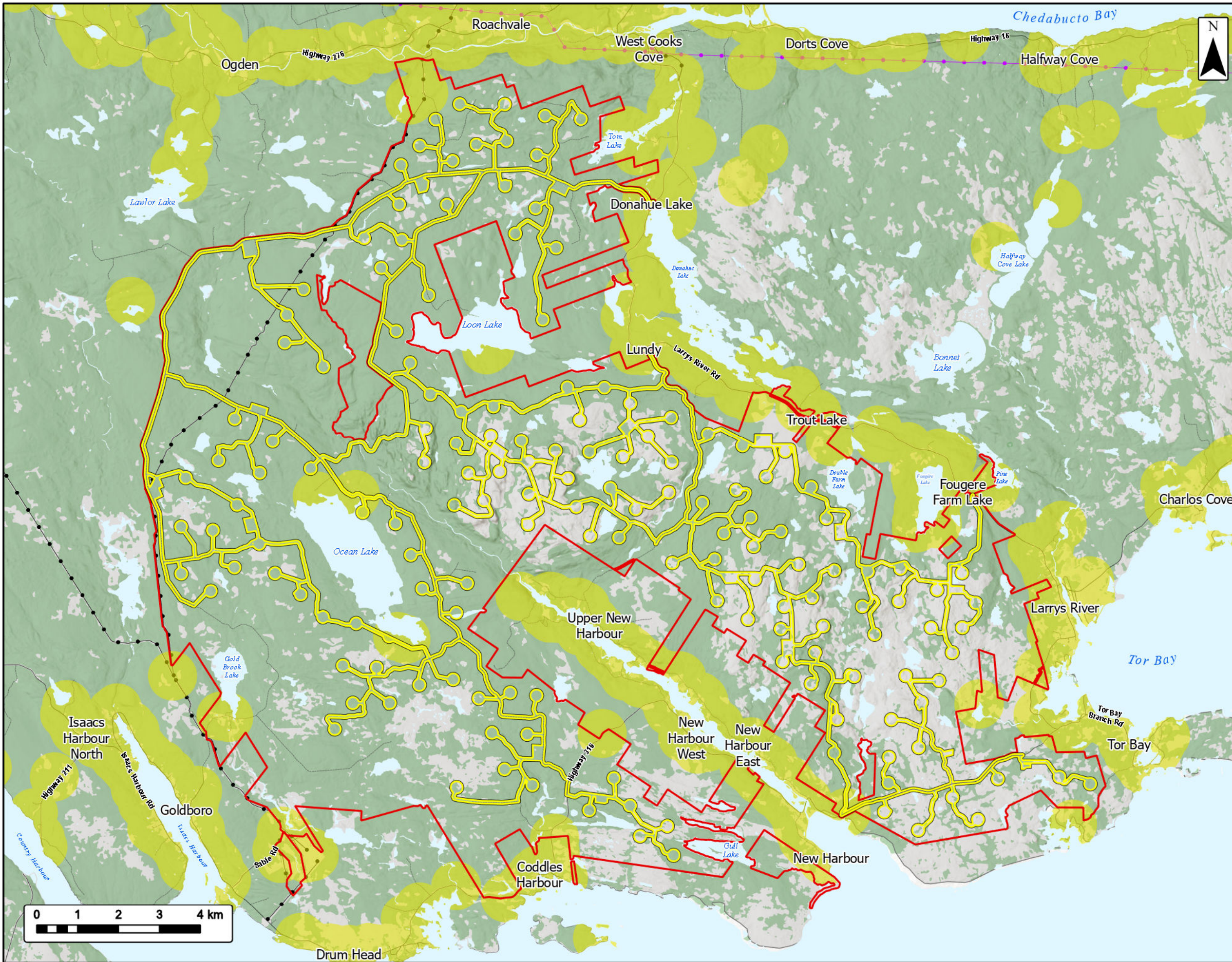
Water Features

Mapped Lakes and Rivers



Coordinate System: NAD 1983 UTM Zone 20N
 Sources: Esri, NASA, NGA, USGS, Service Nova Scotia, GeoNOVA, SNGS, NSNRR, ACCDC, IBA Canada, CNWL, HERE, Garmin, USGS

Date: 2026-04-24	Project #: 25-12648
Scale: 1:90,000	Drawing #: 10.13
Drawn By: K. Wallace	
Checked By: A. Doane	



Ocean Lake Wind Project
Potential Barn Swallow Breeding Habitat



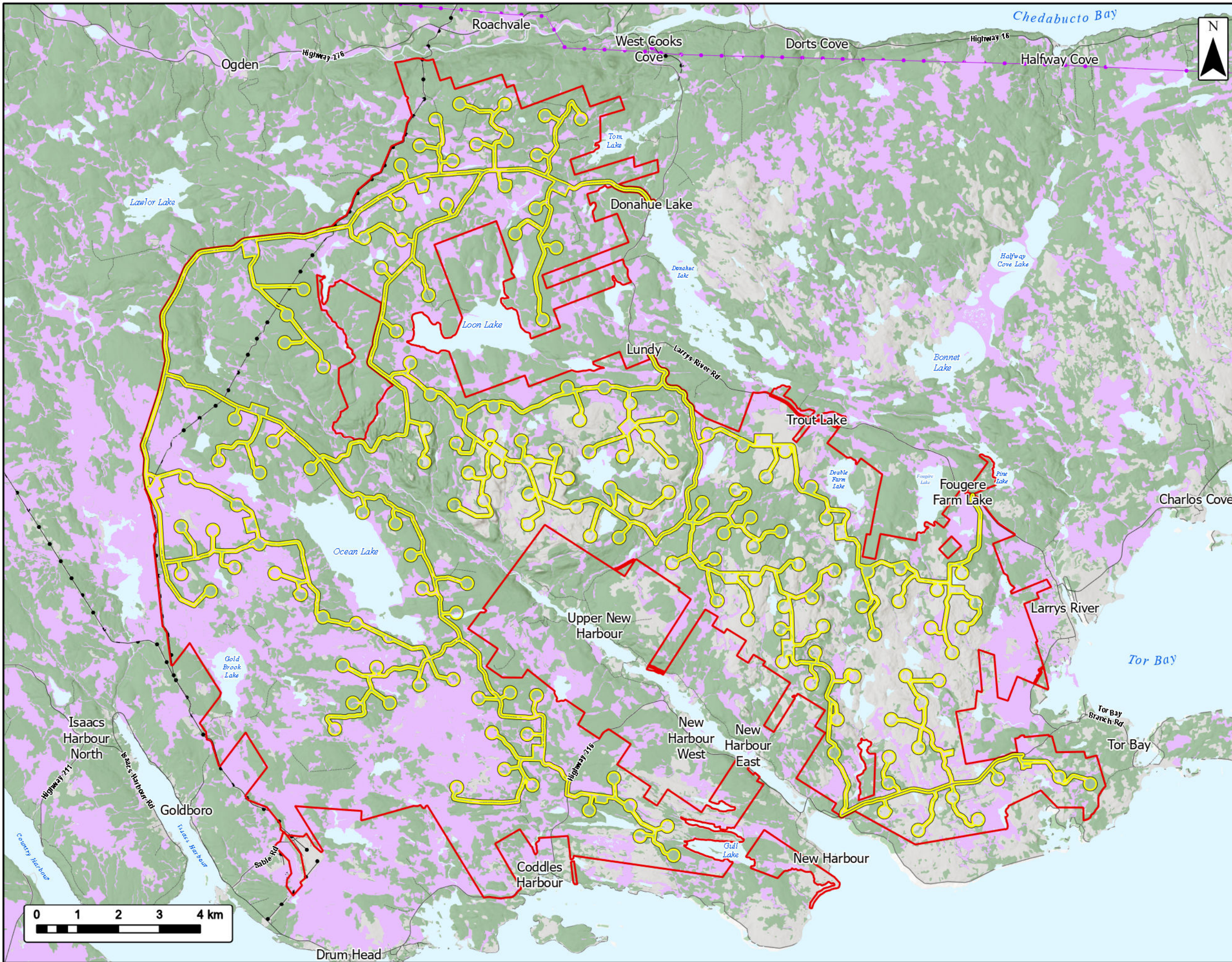
Study Area	
Assessment Area	
Potential Barn Swallow Breeding Habitat	
Transportation	
Road	
Unpaved Road	
Utilities (Line)	
Existing Pipeline	
Existing Transmission Lines	
Water Features	
Mapped Lakes and Rivers	



Coordinate System: NAD 1983 UTM Zone 20N
Sources: Esri, NASA, NGA, USGS, Service Nova Scotia, GeoNOVA, SNGS, NSNRR, ACCDC, IBA Canada, CNWL, HERE, Garmin, USGS

Date: 2026-04-24	Project #: 25-12648
Scale: 1:90,000	Drawing #: 10.14
Drawn By: P. Opra	
Checked By: A. Doane	





Ocean Lake Wind Project

Potential Canada Warbler Breeding Habitat



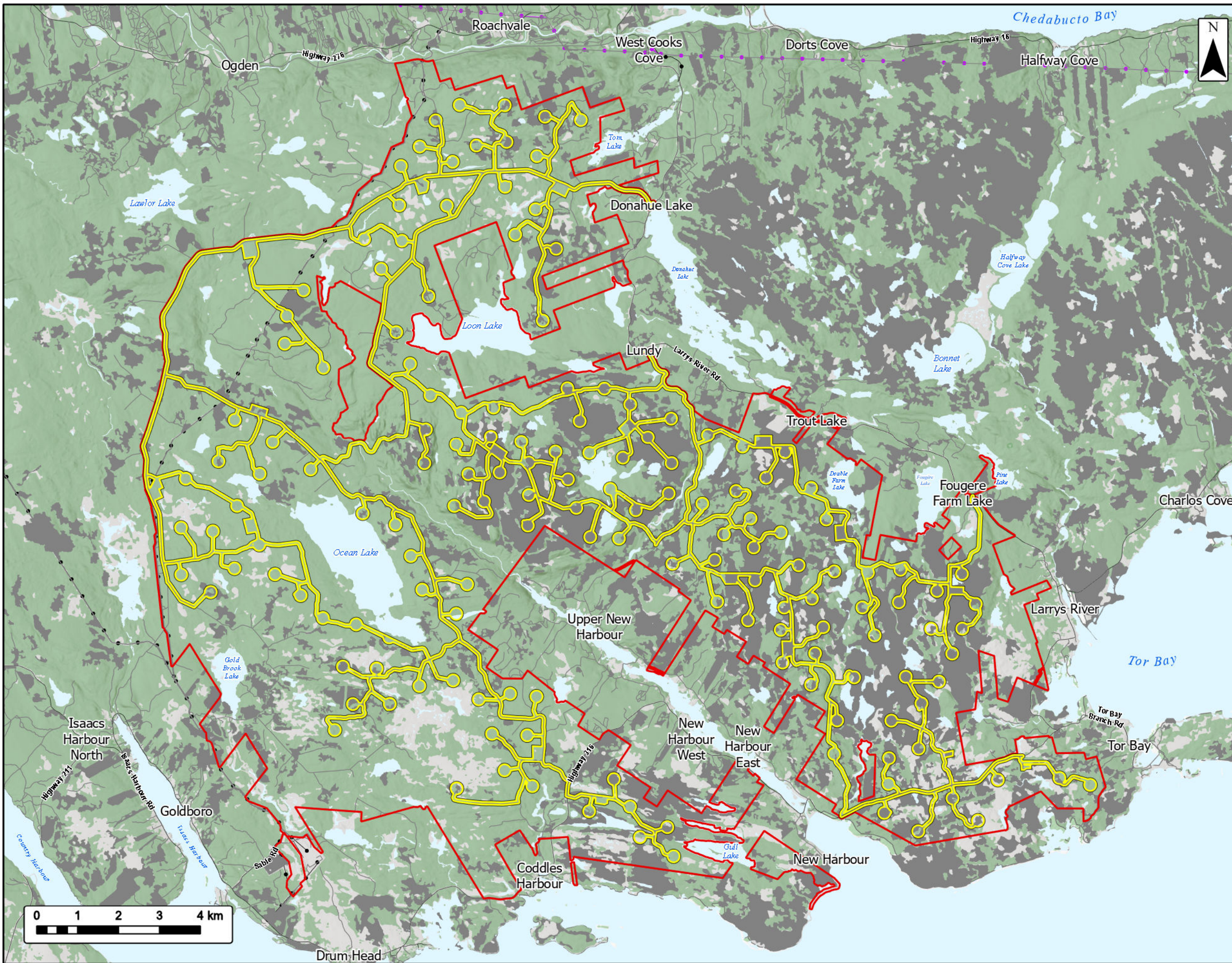
Study Area	
Assessment Area	
Potential Canada Warbler Breeding Habitat	
Transportation	
Road	
Unpaved Road	
Utilities (Line)	
Existing Pipeline	
Existing Transmission Lines	
Water Features	
Mapped Lakes and Rivers	



Coordinate System: NAD 1983 UTM Zone 20N
 Sources: Esri, NASA, NGA, USGS, Service Nova Scotia, GeoNOVA, SNGS, NSNRR, ACCDC, IBA Canada, CNWL, HERE, Garmin, USGS

Date:	2026-04-24	Project #:	25-12648
Scale:	1:90,000	Drawing #:	10.15
Drawn By:	P. Opra		
Checked By:	A. Doane		





Ocean Lake Wind Project

Potential Common Nighthawk Breeding Habitat

Study Area

Assessment Area

Potential Common Nighthawk Breeding Habitat

Transportation

Road

Unpaved Road

Utilities (Line)

Existing Pipeline

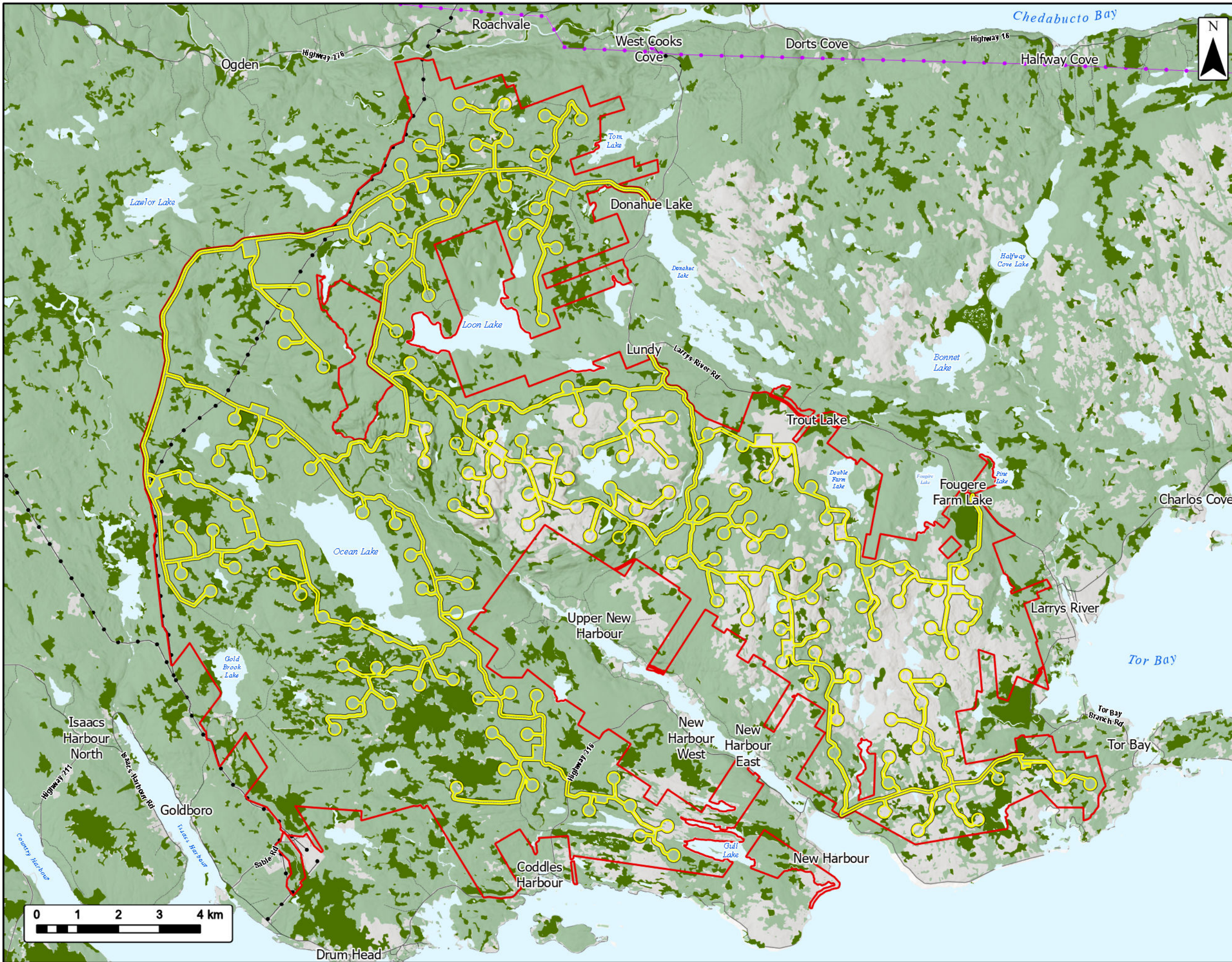
Existing Transmission Lines

Water Features

Mapped Lakes and Rivers

Coordinate System: NAD 1983 UTM Zone 20N
 Sources: Esri, NASA, NGA, USGS, Service Nova Scotia, GeoNOVA, SNSI, NSNRR, ACCDC, IBA Canada, CNWL, HERE, Garmin, USGS

Date: 2026-04-24	Project #: 25-12648
Scale: 1:90,000	Drawing #:
Drawn By: P. Opra	10.16
Checked By: A. Doane	



Ocean Lake Wind Project

Potential Olive-Sided Flycatcher Breeding Habitat



Study Area	
Assessment Area	
Potential Olive-Sided Flycatcher Breeding Habitat	
Transportation	
Road	
Unpaved Road	
Utilities (Line)	
Existing Pipeline	
Existing Transmission Lines	
Water Features	
Mapped Lakes and Rivers	



Coordinate System: NAD 1983 UTM Zone 20N
 Sources: Esri, NASA, NGA, USGS, Service Nova Scotia, GeoNOVA, SNGS, NSNRR, ACCDC, IBA Canada, CNWL, HERE, Garmin, USGS

Date:	2026-04-24	Project #:	25-12648
Scale:	1:90,000	Drawing #:	10.17
Drawn By:	P. Opra		
Checked By:	A. Doane		

