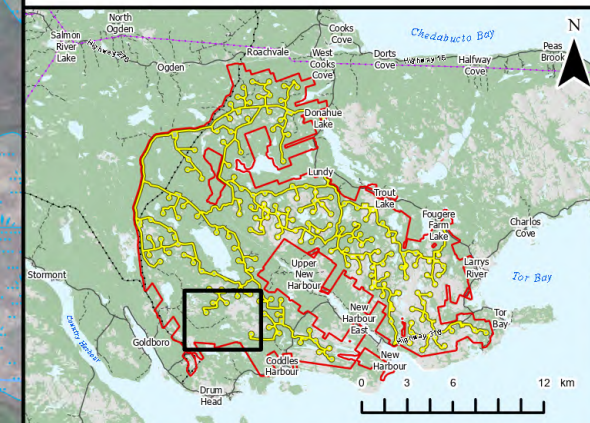


Ocean Lake Wind Project

Project Infrastructure



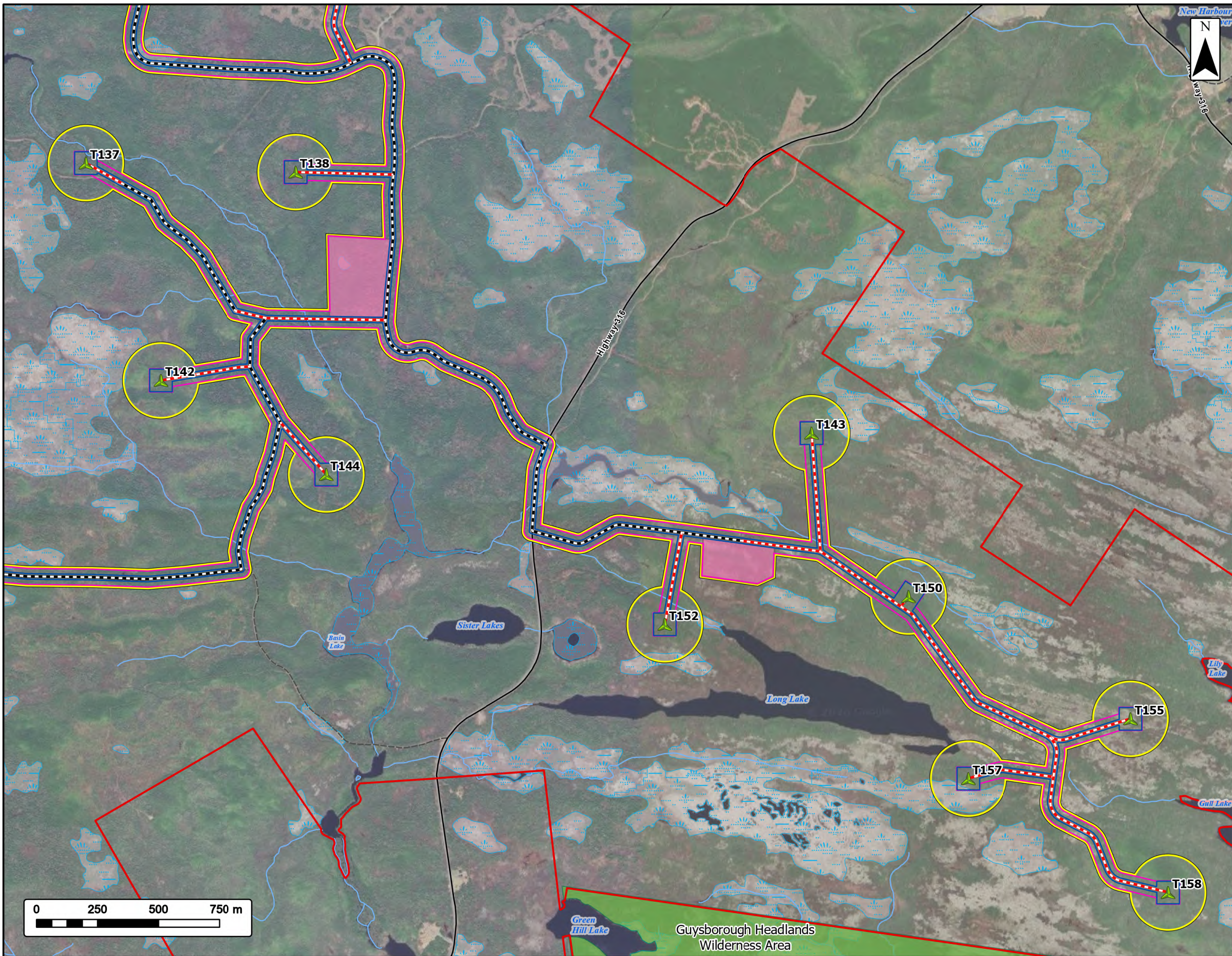
Study Area	
Assessment Area	
Clearing Footprint	
Project Footprint	
Existing Road to be Upgraded	
Proposed New Road	
Proposed Turbine Locations	
Transportation	
Unpaved Road	
Utilities (Line)	
Existing Pipeline	
Water Features	
Mapped Watercourses	
Mapped Wetlands	



Coordinate System: NAD 1983 UTM Zone 20N
 Sources: © OpenStreetMap (and) contributors, CC-BY-SA, Esri, CGIAR, USGS, GeoNOVA, SNSIS, NSNRR, ACCDC, IBA Canada, CNWI, HERE, Garmin, USGS

Date:	2026-05-04	Project #:	25-12648
Scale:	1:15,000	Drawing #:	3.1P
Drawn By:	K. Wallace		
Checked By:	A. Doane		



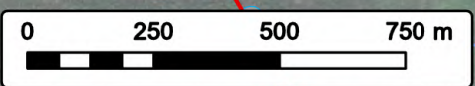
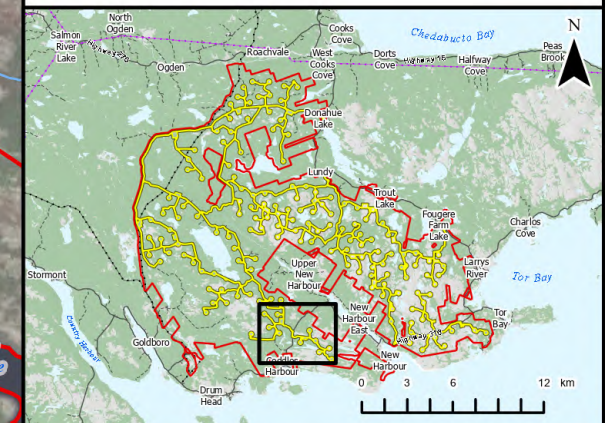


Ocean Lake Wind Project

Project Infrastructure



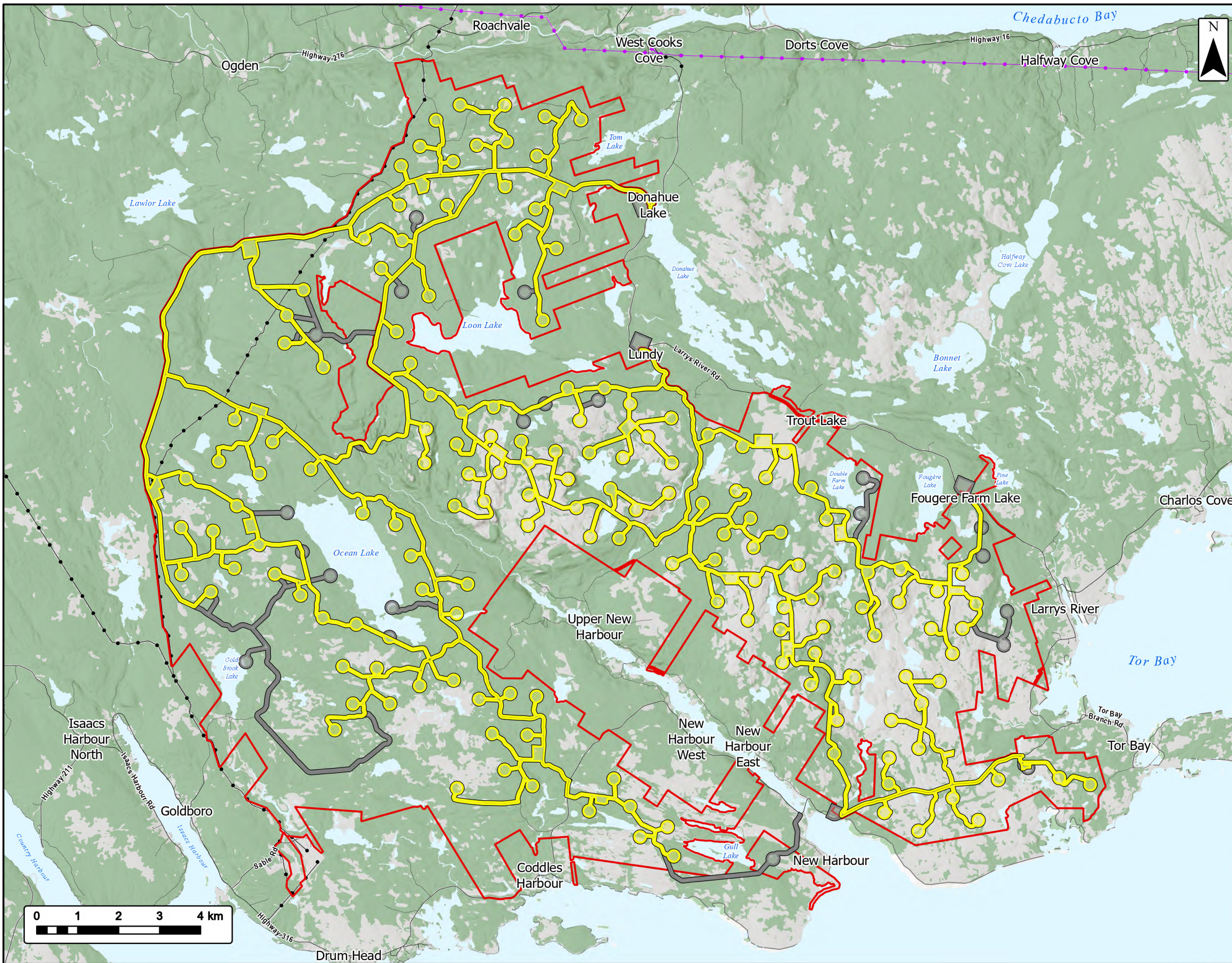
Study Area	
Assessment Area	
Clearing Footprint	
Project Footprint	
Laydown Area	
Existing Road to be Upgraded	
Proposed New Road	
Proposed Turbine Locations	
Protected and Limited Use Lands	
Wilderness Area	
Transportation	
Road	
Unpaved Road	
Water Features	
Mapped Watercourses	
Mapped Wetlands	



Coordinate System: NAD 1983 UTM Zone 20N
 Sources: © OpenStreetMap (and) contributors, CC-BY-SA, Esri, CGIAR, USGS, GeoNOVA, SNSIS, NSNRR, ACCDC, IBA Canada, CNWI, HERE, Garmin, USGS

Date:	2026-05-04	Project #:	25-12648
Scale:	1:15,000	Drawing #:	3.1Q
Drawn By:	K. Wallace		
Checked By:	A. Doane		





Ocean Lake Wind Project

Previously Assessed Areas

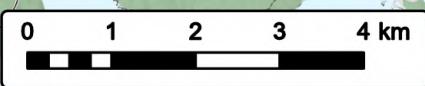


Study Area	
Assessment Area	
Previously Assessed Areas	
Transportation	
Road	
Unpaved Road	
Utilities (Line)	
Existing Pipeline	
Existing Transmission Lines	
Water Features	
Mapped Lakes and Rivers	



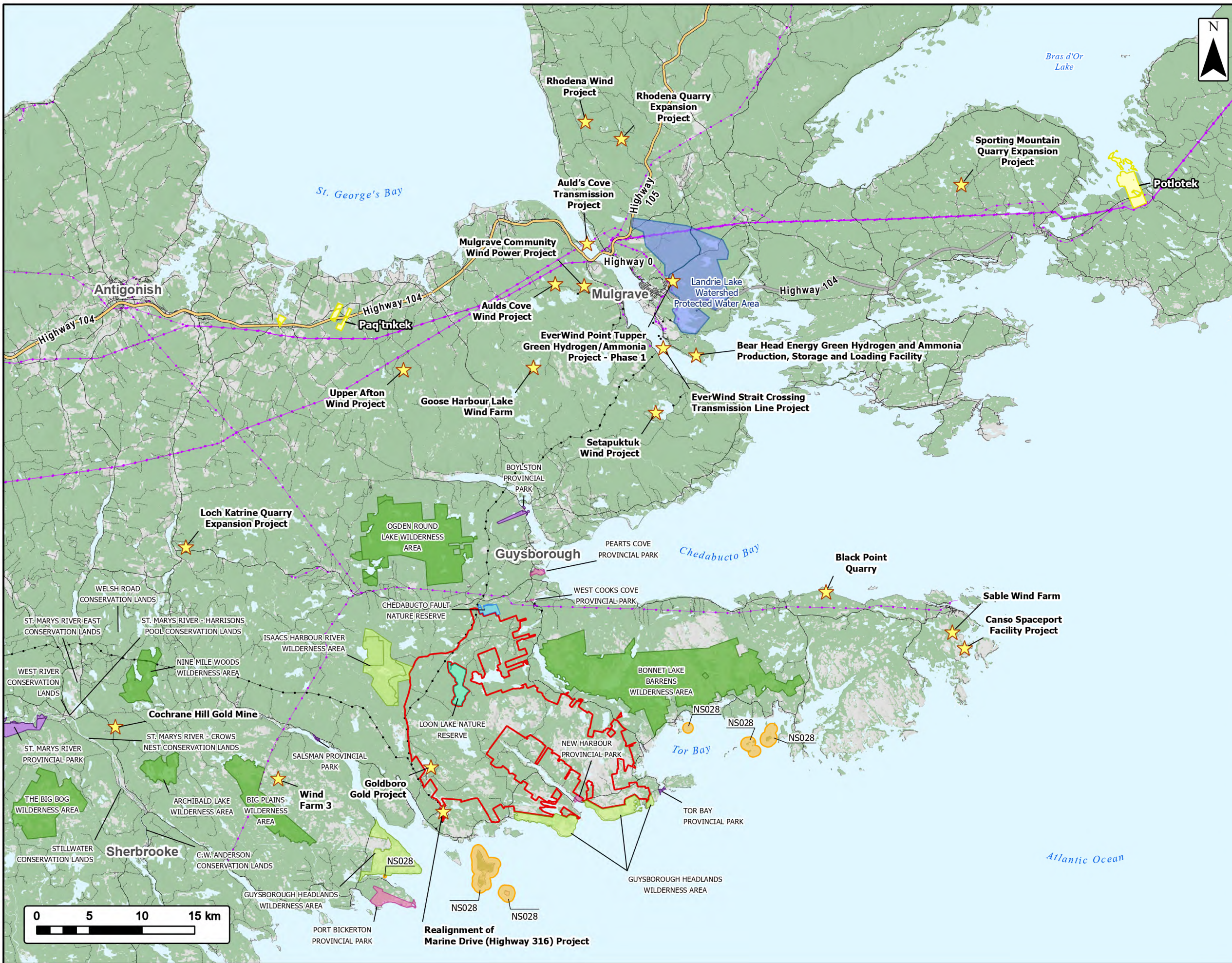
Coordinate System: NAD 1983 UTM Zone 20N
 Sources: Esri, NASA, NGA, USGS, Service Nova Scotia, GeoNOVA, SNSIS, NSNRR, ACCDC, IBA Canada, CNWI, HERE, Garmin, USGS

Date:	2026-05-05	Project #:	25-12648
Scale:	1:90,000	Drawing #:	3.2
Drawn By:	K. Wallace		
Checked By:	A. Doane		



Ocean Lake Wind Project

Regional Overview

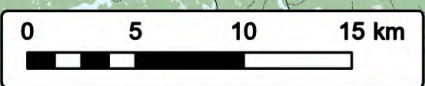


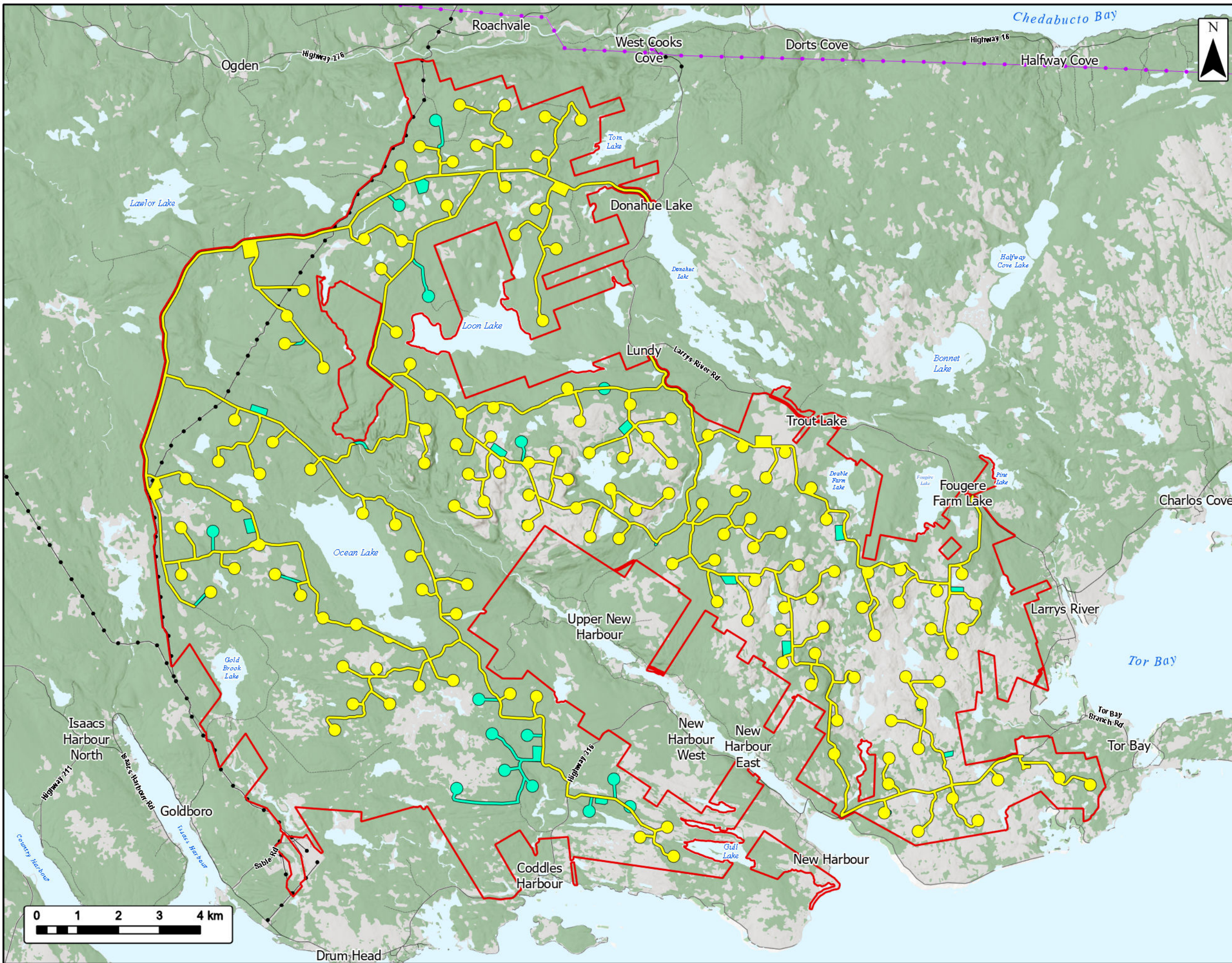
Study Area		Transportation		Trans-Canada Highway	
Nearby Project Locations		Highway		Highway	
Mi'kmaq Community		Road		Unpaved Road	
Protected Watershed		Utilities (Line)		Existing Pipeline	
Nearst Important Bird Area (IBA) - NS028		Existing Transmission Lines		Existing Transmission Lines	
NS Lands Proposed or Pending Protection		Water Features		Mapped Lakes and Rivers	
Nature Reserve					
Provincial Park					
Wilderness Area					
NS Parks and Protected Areas					
Nature Reserve					
Provincial Park					
Wilderness Area					



Coordinate System: NAD 1983 UTM Zone 20N
 Sources: Esri, NASA, NGA, USGS, Service Nova Scotia, GeoNOVA, SNSIS, NSNRR, ACCDC, IBA Canada, CNWI, HERE, Garmin, USGS

Date:	2026-05-04	Project #:	25-12648
Scale:	1:350,000	Drawing #:	3.3
Drawn By:	K. Wallace		
Checked By:	A. Doane		





Ocean Lake Wind Project

Gap Areas



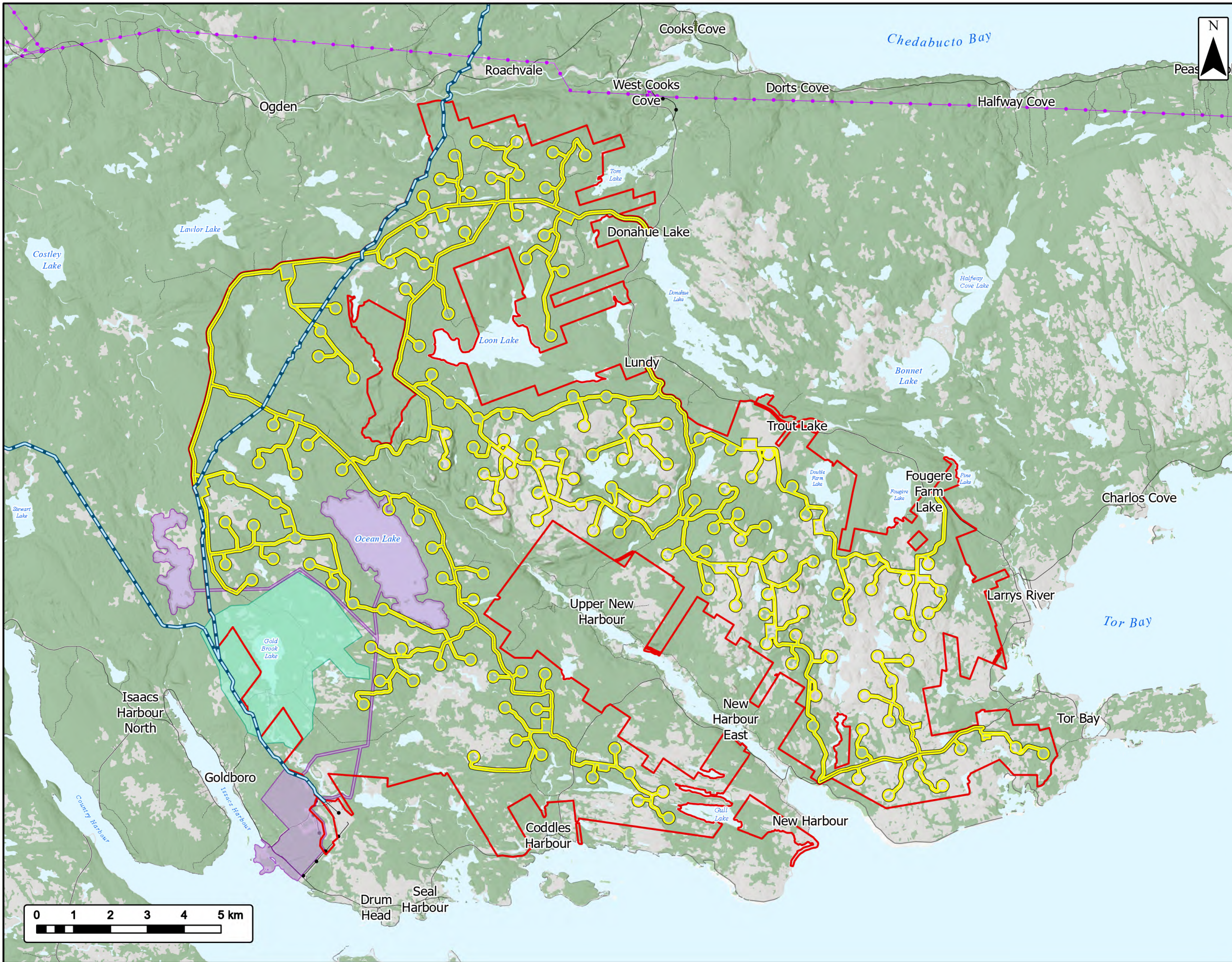
- Study Area
- Assessed Areas
- Gap Areas
- Transportation**
- Road
- Unpaved Road
- Utilities (Line)**
- Existing Pipeline
- Existing Transmission Lines
- Water Features**
- Mapped Lakes and Rivers



Coordinate System: NAD 1983 UTM Zone 20N
 Sources: Esri, NASA, NGA, USGS, Service Nova Scotia, GeoNOVA, SNGS, NSNRR, ACCDC, IBA Canada, CNWL, HERE, Garmin, USGS

Date: 2026-04-23	Project #: 25-12648
Scale: 1:90,000	Drawing #:
Drawn By: M. Partridge	4.1
Checked By: A. Doane	





Ocean Lake Wind Project

Nearby Industrial Users

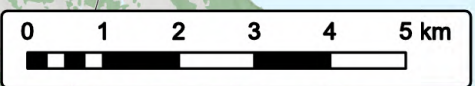


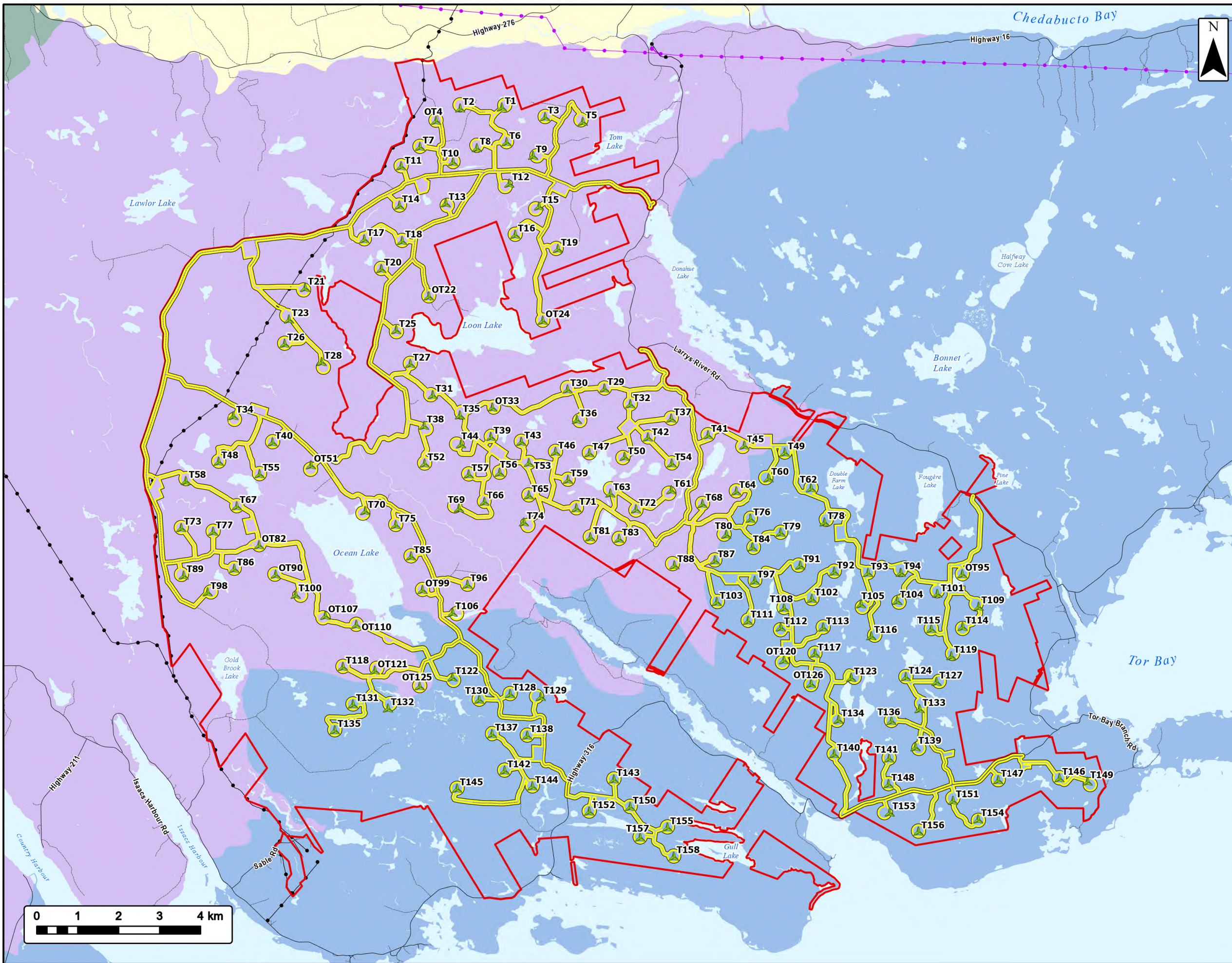
- Study Area
- Assessment Area
- Goldboro Gold Project Area
- Nova Sustainable Fuels Renewable Energy Park Project Area
- Maritimes & Northeast Pipeline
- Transportation**
- Road
- Unpaved Road
- Utilities (Line)**
- Existing Pipeline
- Existing Transmission Lines
- Water Features**
- Mapped Lakes and Rivers



Coordinate System: NAD 1983 UTM Zone 20N
Sources: Esri, NASA, NGA, USGS, Service Nova Scotia, GeoNOVA, SNSIS, NSNRR, ACCDC, IBA Canada, CHWI, HERE, Garmin, USGS

Date: 2026-05-04	Project #: 25-12648
Scale: 1:100,000	Drawing #:
Drawn By: M. Partridge	6.1
Checked By: A. Doane	





Ocean Lake Wind Project

Ecodistricts and Ecoregions



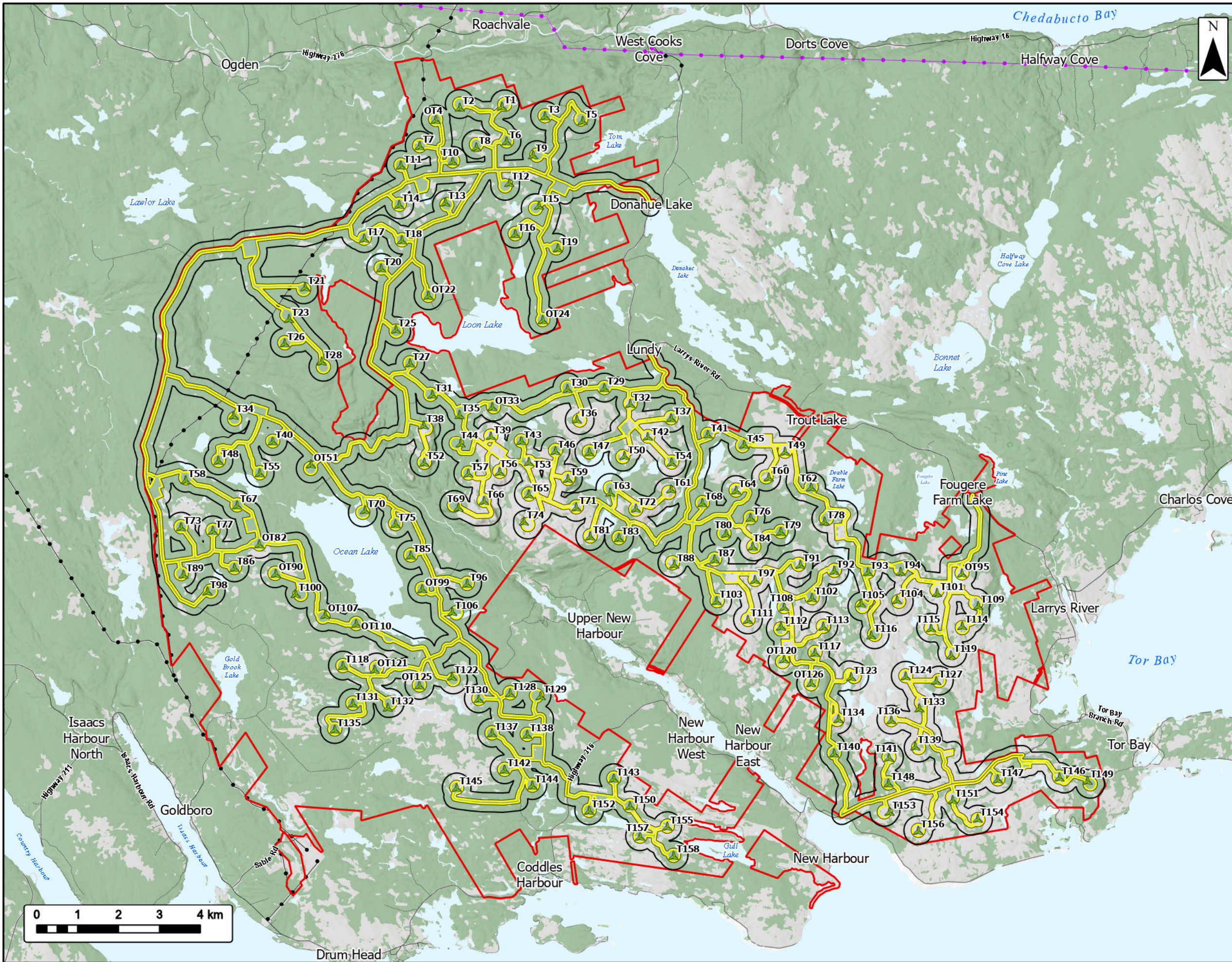
- Study Area
- Assessment Area
- Proposed Turbine Locations
- Nova Scotia Uplands Ecoregion**
 - 360 Mulgrave Plateau Ecodistrict
 - 370 St. Marys River Ecodistrict
- Eastern Ecoregion**
 - 440 Eastern Interior Ecodistrict
- Atlantic Coastal Ecoregion**
 - 820 Eastern Shore Ecodistrict
- Transportation**
 - Road
 - Unpaved Road
- Utilities (Line)**
 - Existing Pipeline
 - Existing Transmission Lines
- Water Features**
 - Mapped Lakes and Rivers



Coordinate System: NAD 1983 UTM Zone 20N
 Sources: GeoNOVA, SNSIS, NSNRR, ACCDC, IBA Canada, CNWI, HERE, Garmin, USGS

Date: 2026-05-04	Project #: 25-12648
Scale: 1:90,000	Drawing #: 7.1
Drawn By: K. Wallace	7.1
Checked By: A. Doane	





Ocean Lake Wind Project

Atmospheric LAA

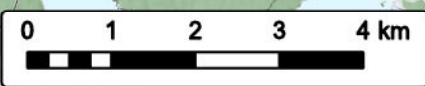


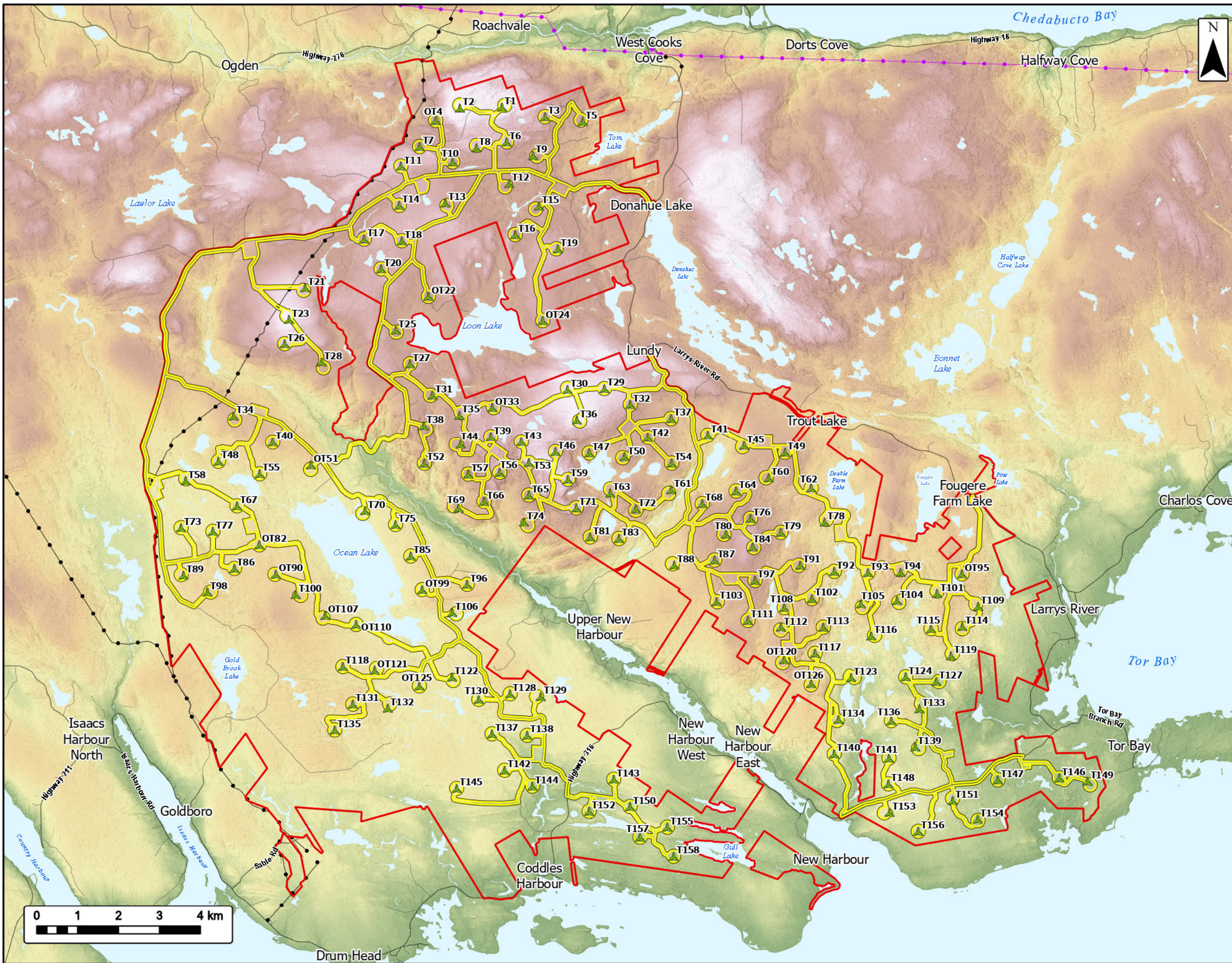
- Study Area
- Assessment Area
- Atmospheric Local Assessment Area (LAA)
- Proposed Turbine Locations
- Transportation**
- Road
- Unpaved Road
- Utilities (Line)**
- Existing Pipeline
- Existing Transmission Lines
- Water Features**
- Mapped Lakes and Rivers



Coordinate System: NAD 1983 UTM Zone 20N
 Sources: Esri, NASA, NGA, USGS, Service Nova Scotia, GeoNOVA, SNGS, NSNRR, ACCDC, IBA Canada, CNWL, HERE, Garmin, USGS

Date: 2026-04-23	Project #: 25-12648
Scale: 1:90,000	Drawing #:
Drawn By: K. Wallace	7.2
Checked By: A. Doane	





Ocean Lake Wind Project

Geomorphology



Study Area

Assessment Area

Proposed Turbine Locations

Elevation (m ASL)
237
0

Transportation

Road

Unpaved Road

Utilities (Line)

Existing Pipeline

Existing Transmission Lines

Water Features

Mapped Lakes and Rivers



Coordinate System: NAD 1983 UTM Zone 20N
Sources: Service Nova Scotia, GeoNOVA, SNSIS, NSNRR, ACCDC, IBA Canada, CNWI, HERE, Garmin, USGS

Date: 2026-04-23	Project #: 25-12648
Scale: 1:90,000	Drawing #:
Drawn By: K. Wallace	8.1
Checked By: A. Doane	

