

Ocean Lake Wind Project

Surficial Geology

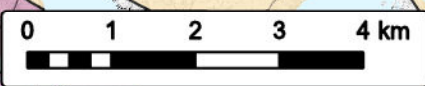


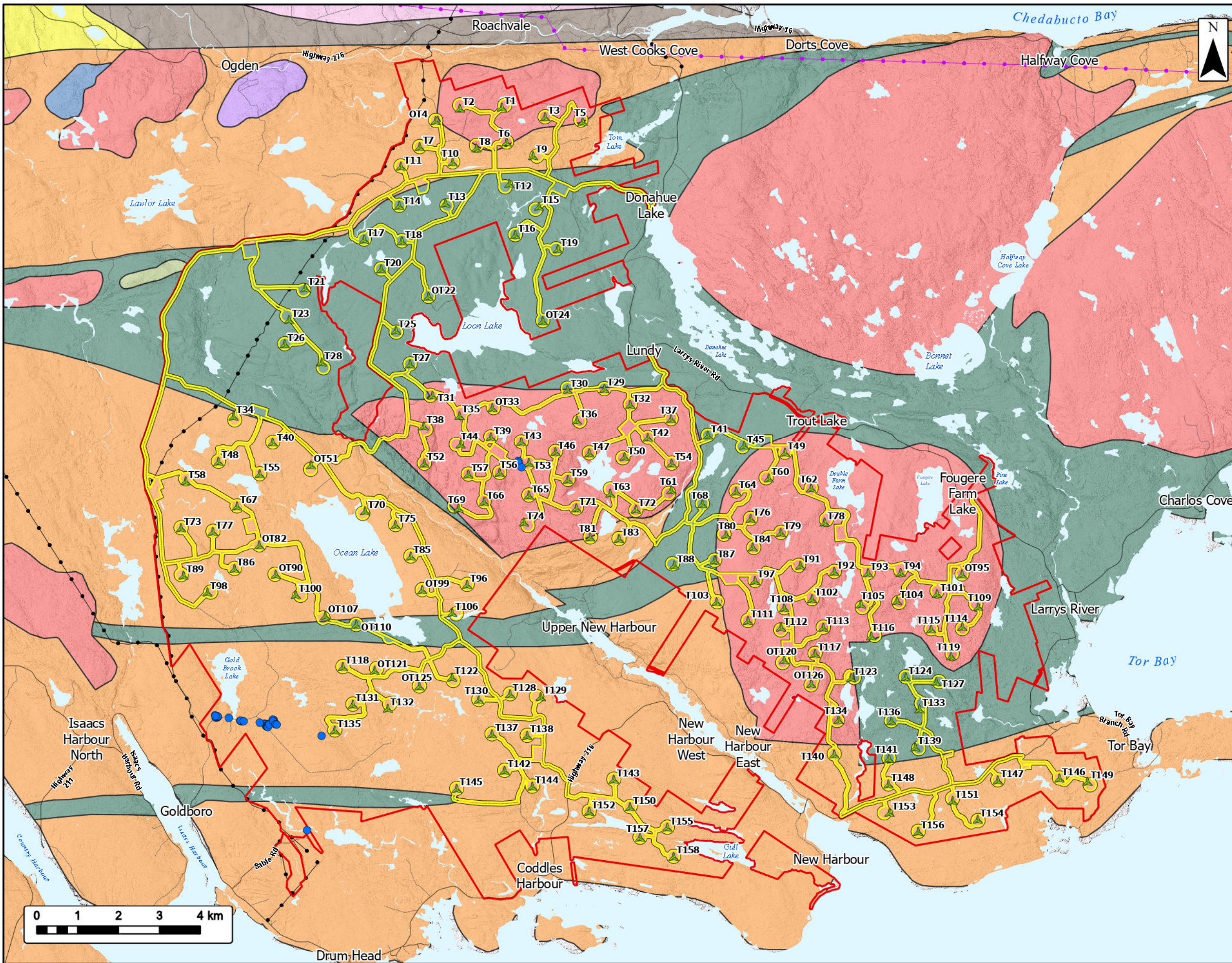
Study Area		Transportation	
Assessment Area		Road	
Proposed Turbine Locations		Unpaved Road	
Surficial Geology By Unit		Utilities (Line)	
Bedrock		Existing Pipeline	
Hummocky Ground		Existing Transmission Lines	
Kame Fields and Esker Systems		Water Features	
Marine Deposits		Mapped Lakes and Rivers	
Organic Deposits			
Silty Drumlin			
Silty Till Plain			
Stony Till Plain			



Coordinate System: NAD 1983 UTM Zone 20N
 Sources: Service Nova Scotia, GeoNOVA, SNSIS, NSNRR, ACCDC, IBA Canada, CNWI, HERE, Garmin, USGS

Date:	2026-04-23	Project #:	25-12648
Scale:	1:90,000	Drawing #:	8.2
Drawn By:	K. Wallace		
Checked By:	A. Doane		





Ocean Lake Wind Project

Bedrock Geology & Abandoned Mine Openings

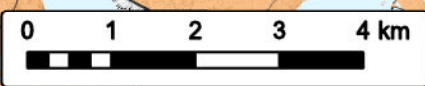


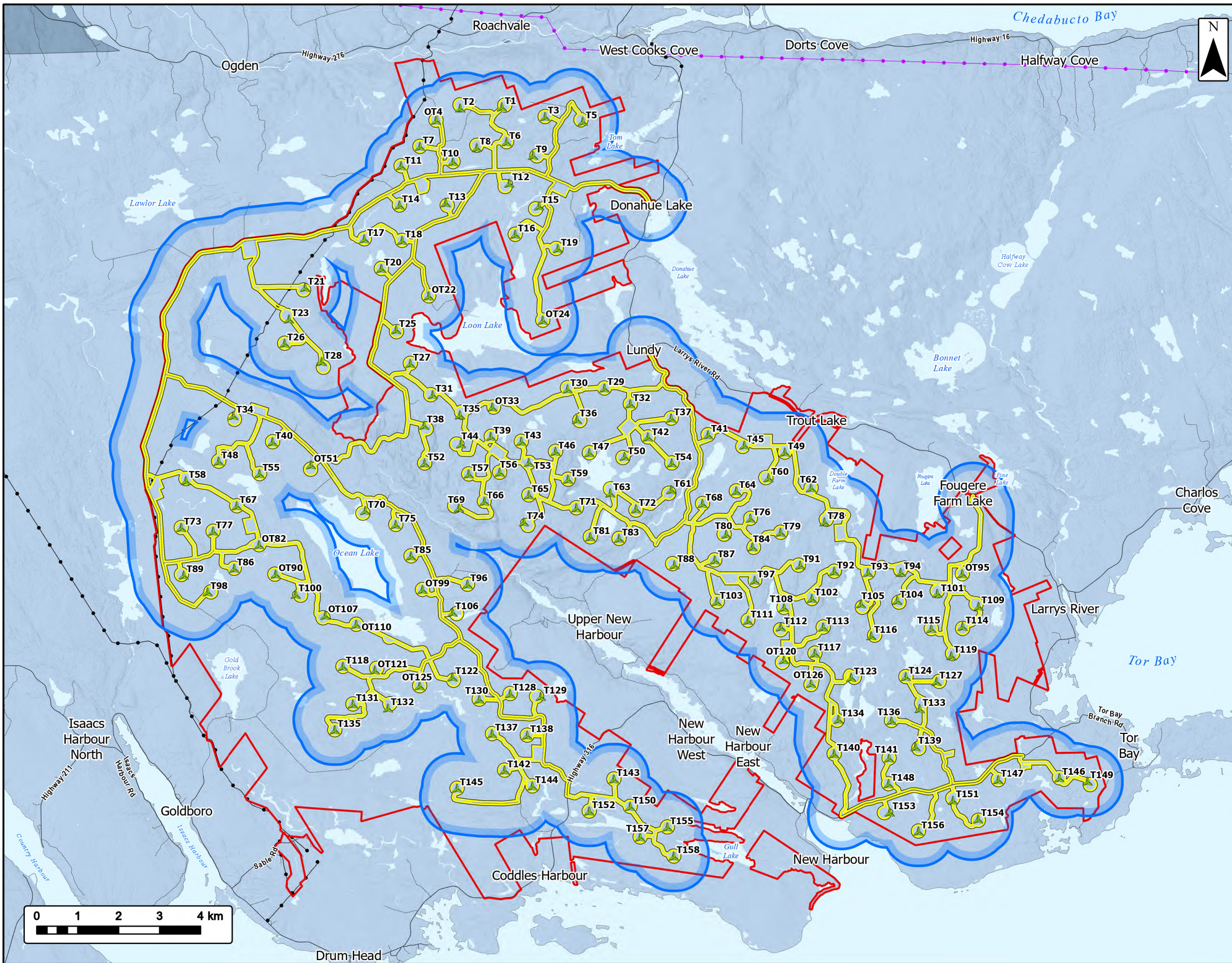
Study Area		Middle - Late Devonian muscovite leucomonzogranite	
Assessment Area		Proterozoic - Devonian amphibolite	
Proposed Turbine Locations		Transportation	
Abandoned Mine Opening		Road	
		Unpaved Road	
Bedrock Geology By Formation			
Horton Group: southern mainland		Utilities (Line)	
Clam Harbour River Formation		Existing Pipeline	
Halifax Formation		Existing Transmission Lines	
Goldenville Formation		Water Features	
Middle - Late Devonian tonalite		Mapped Lakes and Rivers	
Middle - Late Devonian muscovite biotite monzogranite			
Middle - Late Devonian fine grained leucomonzogranite			



Coordinate System: NAD 1983 UTM Zone 20N
 Sources: Service Nova Scotia, GeoNOVA, SNSIS, NSNRR, ACCDC, IBA Canada, CNWI, HERE, Garmin, USGS

Date:	2026-04-23	Project #:	25-12648
Scale:	1:90,000	Drawing #:	8.3
Drawn By:	K. Wallace		
Checked By:	A. Doane		





Ocean Lake Wind Project

Karst Risk



Study Area

Assessment Area

Geophysical Local Assessment Area (LAA)

Proposed Turbine Locations

Karst Risk

Medium Risk

Low Risk

Transportation

Road

Unpaved Road

Utilities (Line)

Existing Pipeline

Existing Transmission Lines

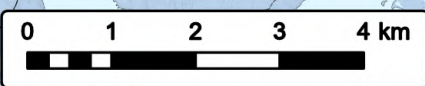
Water Features

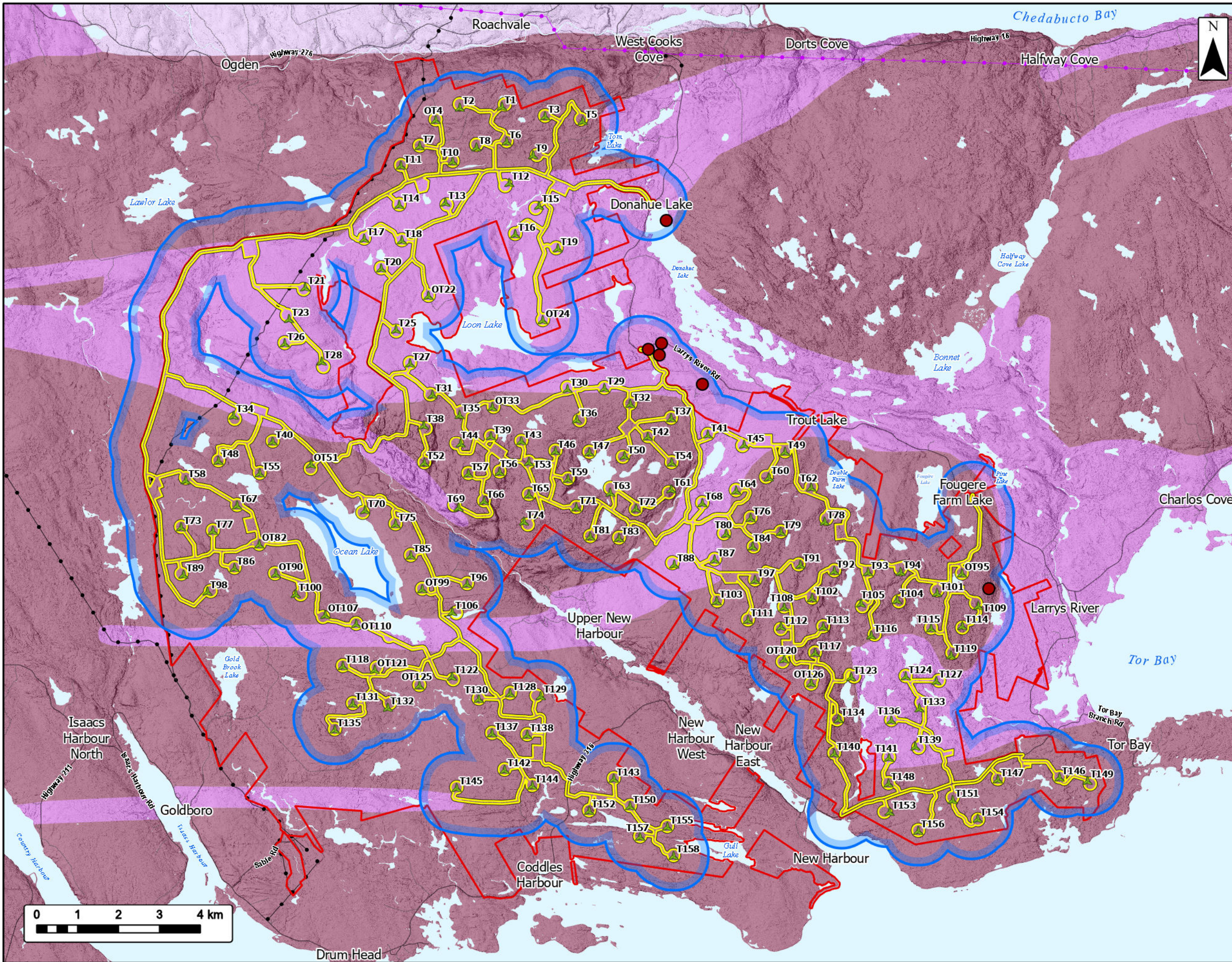
Mapped Lakes and Rivers



Coordinate System: NAD 1983 UTM Zone 20N
 Sources: Service Nova Scotia, GeoNOVA, SNSIS, NSNRR, ACCDC, IBA Canada, CNWI, HERE, Garmin, USGS

Date:	2026-05-04	Project #:	25-12648
Scale:	1:90,000	Drawing #:	8.4
Drawn By:	K. Wallace		
Checked By:	A. Doane		





Ocean Lake Wind Project
Arsenic Groundwater Risk Map

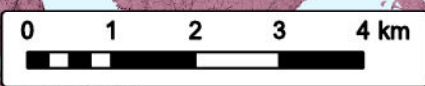


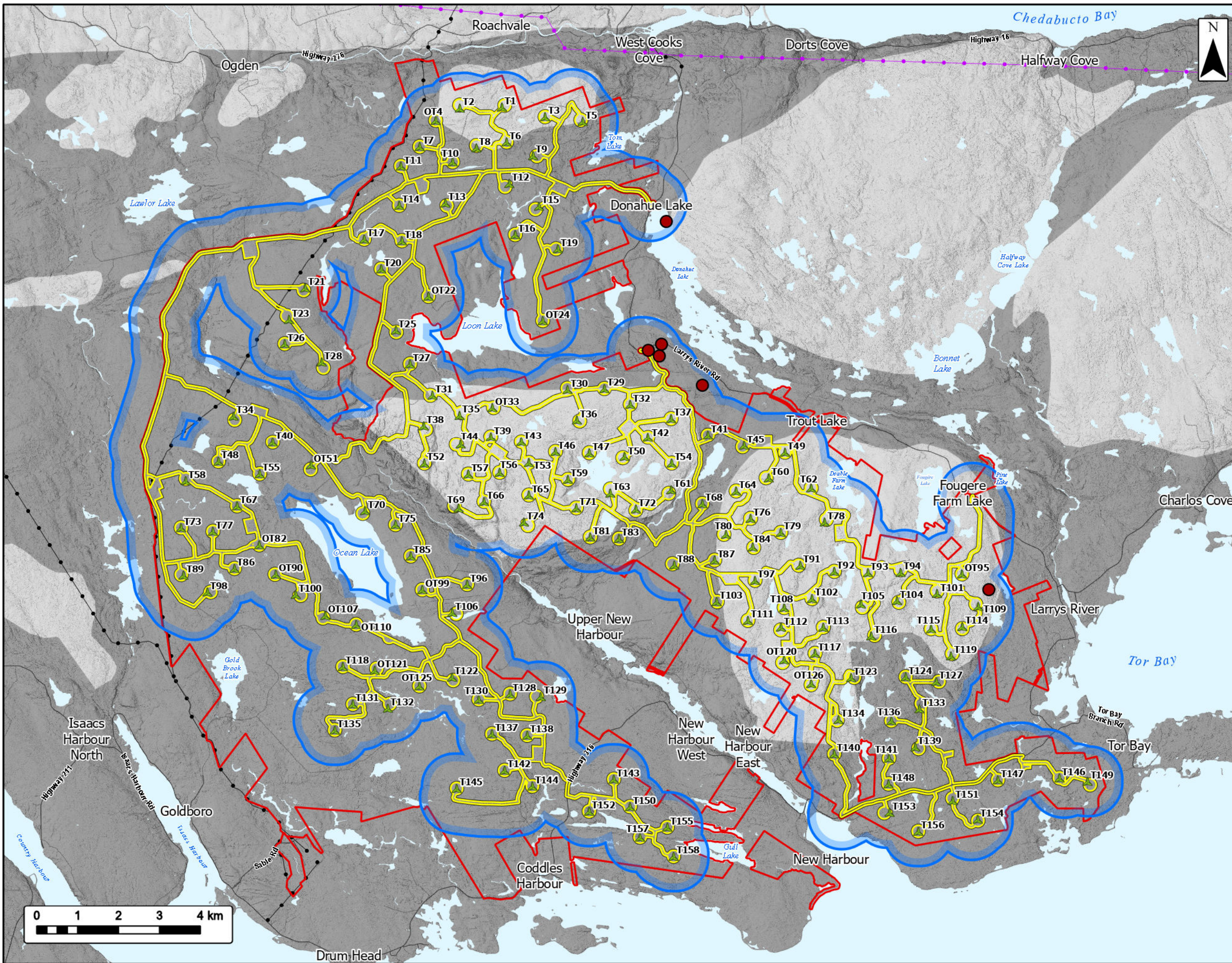
- Study Area
- Assessment Area
- Geophysical Local Assessment Area (LAA)
- Proposed Turbine Locations
- Drilled Groundwater Well
- Arsenic Risk**
- High Risk
- Medium Risk
- Low Risk
- Transportation**
- Road
- Unpaved Road
- Utilities (Line)**
- Existing Pipeline
- Existing Transmission Lines
- Water Features**
- Mapped Lakes and Rivers



Coordinate System: NAD 1983 UTM Zone 20N
Sources: Service Nova Scotia, GeoNOVA, SNSIS, NSNRR, ACCDC, IBA Canada, CNWI, HERE, Garmin, USGS

Date: 2026-04-23	Project #: 25-12648
Scale: 1:90,000	Drawing #:
Drawn By: K. Wallace	8.5
Checked By: A. Doane	





Ocean Lake Wind Project

Manganese Groundwater Risk Map



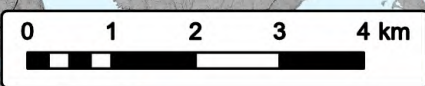
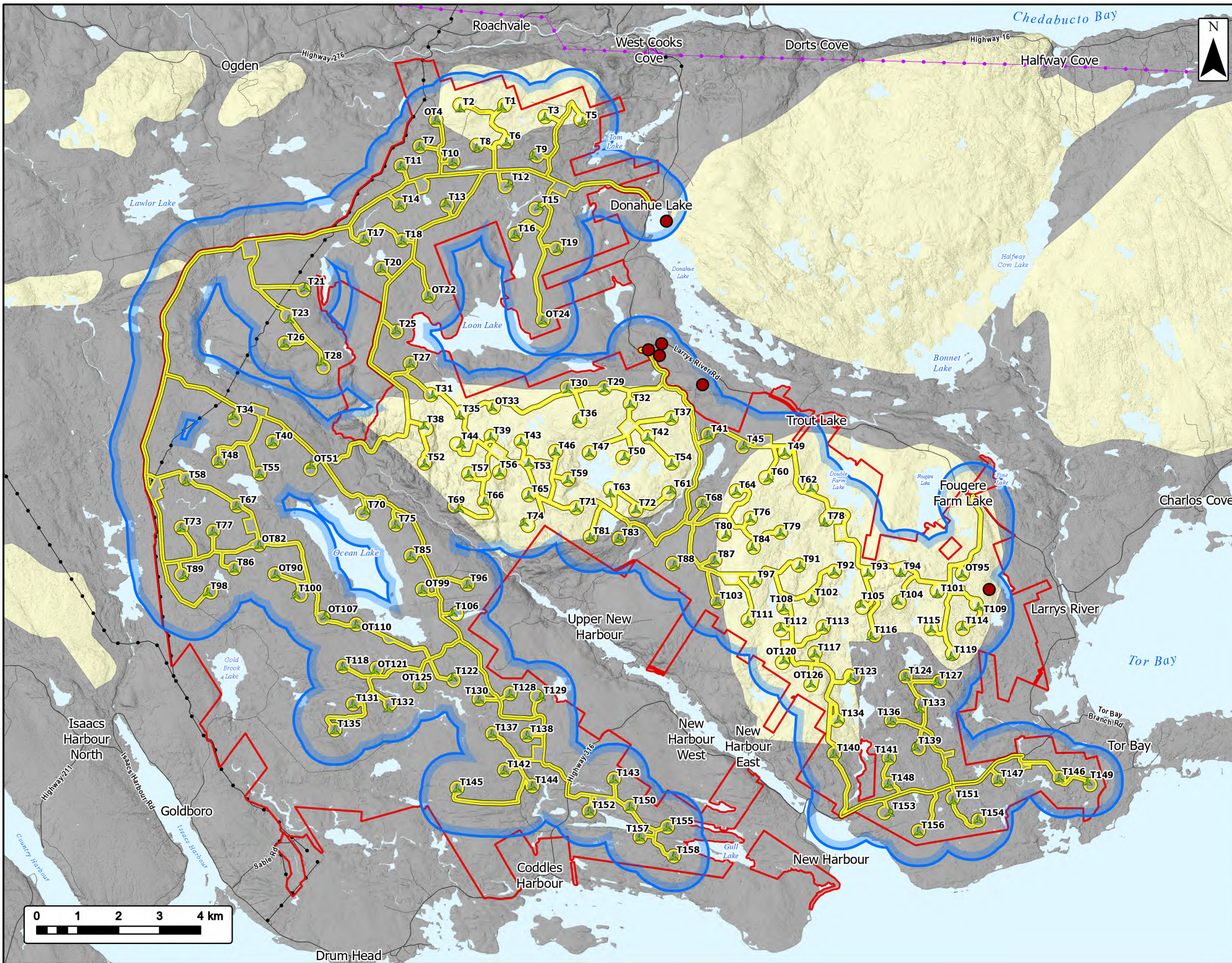
- Study Area
- Assessment Area
- Geophysical Local Assessment Area (LAA)
- Proposed Turbine Locations
- Drilled Groundwater Well
- Manganese Risk**
- High Risk
- Medium Risk
- Transportation**
- Road
- Unpaved Road
- Utilities (Line)**
- Existing Pipeline
- Existing Transmission Lines
- Water Features**
- Mapped Lakes and Rivers



Coordinate System: NAD 1983 UTM Zone 20N
 Sources: Service Nova Scotia, GeoNOVA, SNSIS, NSNRR, ACCDC, IBA Canada, CNWI, HERE, Garmin, USGS

Date: 2026-04-23	Project #: 25-12648
Scale: 1:90,000	Drawing #:
Drawn By: K. Wallace	8.6
Checked By: A. Doane	





Ocean Lake Wind Project

Uranium Groundwater Risk Map



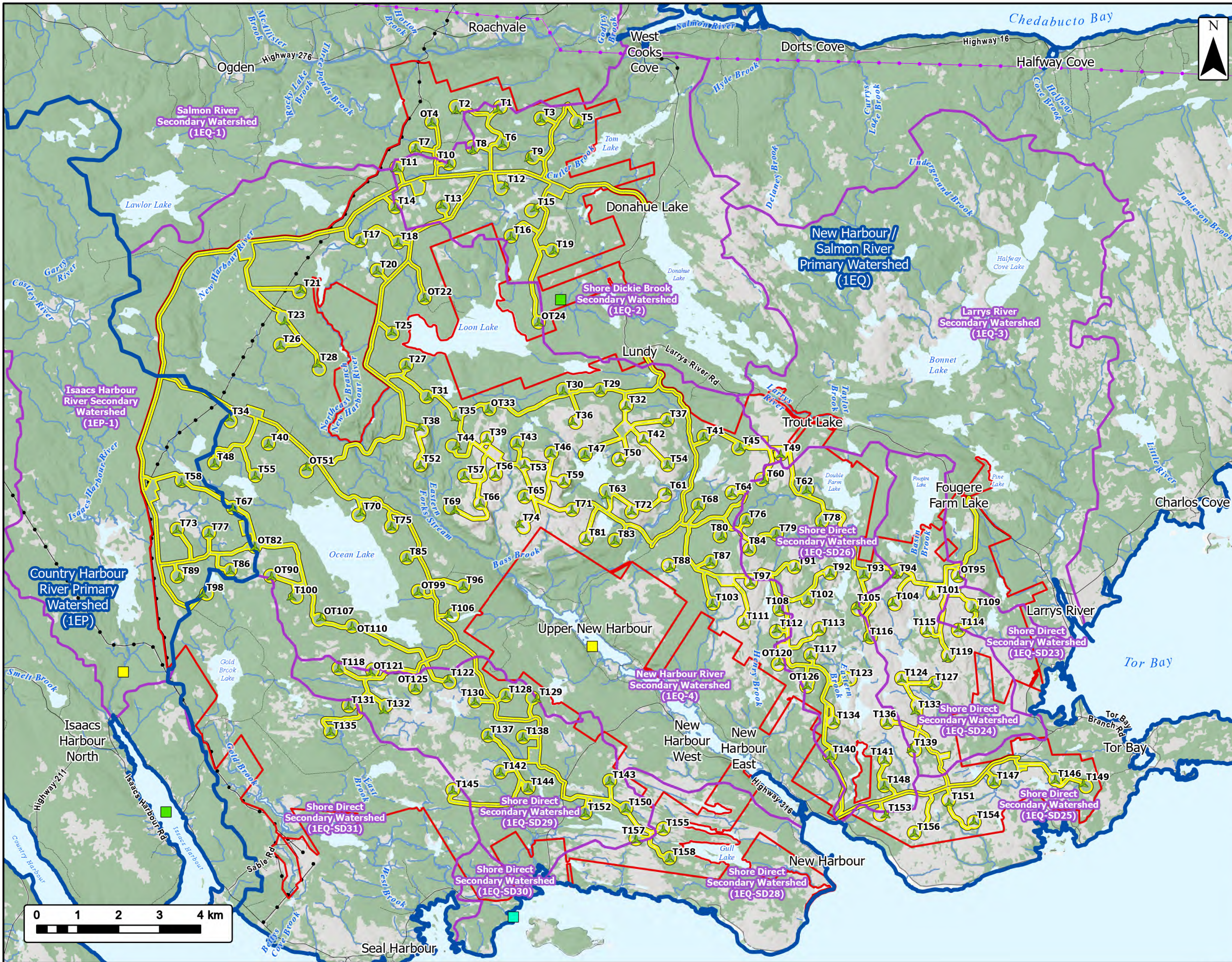
- Study Area
- Assessment Area
- Geophysical Local Assessment Area (LAA)
- Proposed Turbine Locations
- Drilled Groundwater Well
- Uranium Risk**
- Medium Risk
- Low Risk
- Transportation**
- Road
- Unpaved Road
- Utilities (Line)**
- Existing Pipeline
- Existing Transmission Lines
- Water Features**
- Mapped Lakes and Rivers



Coordinate System: NAD 1983 UTM Zone 20N
 Sources: Service Nova Scotia, GeoNOVA, SNSIS, NSNRR, ACCDC, IBA Canada, CNWI, HERE, Garmin, USGS

Date: 2026-05-04	Project #: 25-12648
Scale: 1:90,000	Drawing #: 8.7
Drawn By: K. Wallace	
Checked By: A. Doane	





Ocean Lake Wind Project

Freshwater Desktop Review



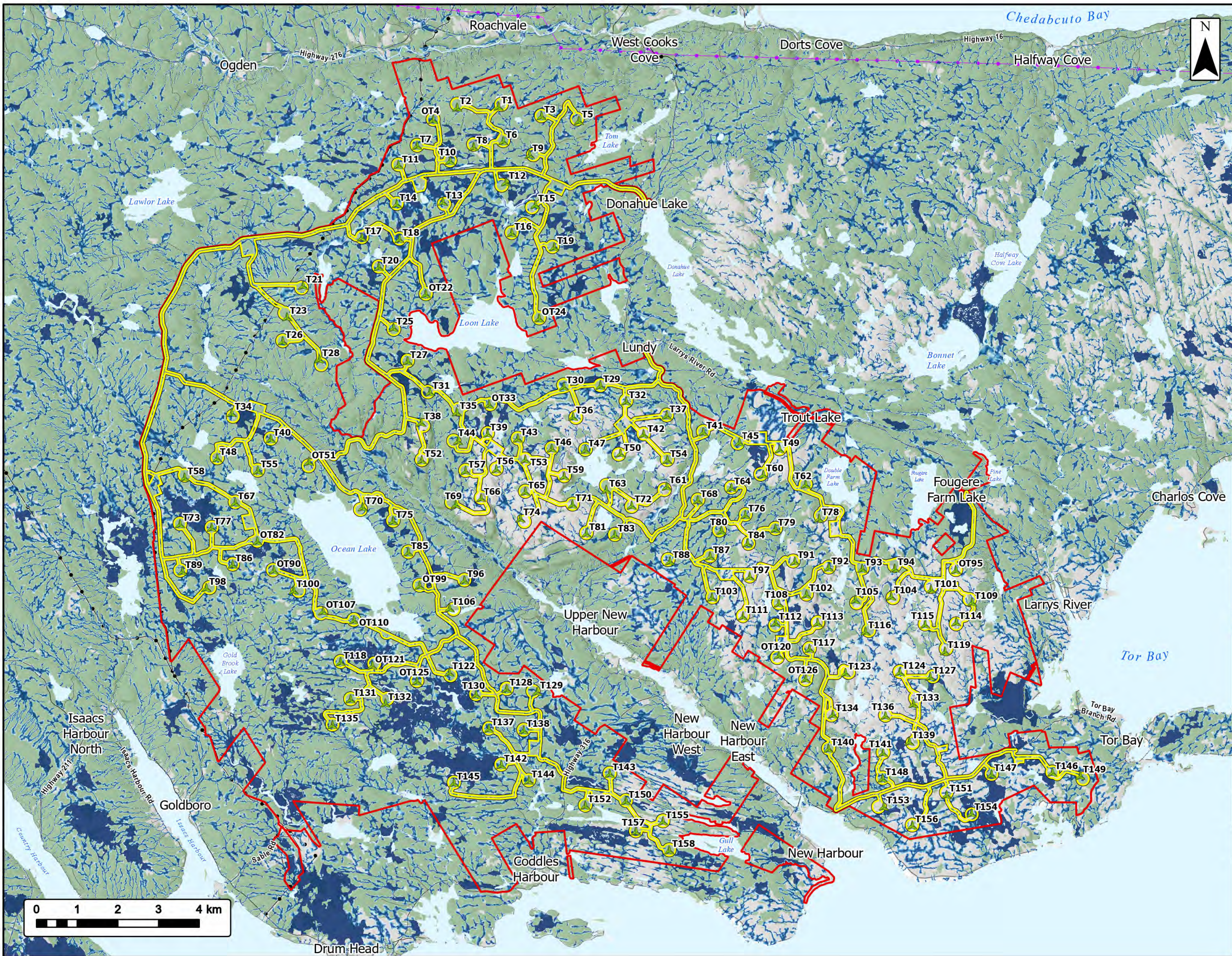
- Study Area
- Assessment Area
- Proposed Turbine Locations
- ACCDC Point Data**
- American Eel
- Atlantic Salmon - Nova Scotia Southern Upland Population
- Brook Trout
- Primary Watershed Boundary
- Secondary Watershed Boundary
- Transportation**
- Road
- Unpaved Road
- Utilities (Line)**
- Existing Pipeline
- Existing Transmission Lines
- Water Features**
- Mapped Watercourses
- Mapped Lakes and Rivers



Coordinate System: NAD 1983 CSRS UTM Zone 20N
 Sources: Esri, NASA, NGA, USGS, Service Nova Scotia, GeoNOVA, SNSIS, NSNRR, ACCDC, IBA Canada, CNWI, HERE, Garmin

Date: 2026-05-04	Project #: 25-12648
Scale: 1:90,000	Drawing #:
Drawn By: K. Wallace	<h1>9.1</h1>
Checked By: A. Doane	





Ocean Lake Wind Project

Wet Area Mapping



Study Area		Depth to Water (cm)	
Assessment Area		0 - 10	
Proposed Turbine Locations		10 - 20	
Transportation		20 - 30	
Road		30 - 40	
Unpaved Road		40 - 50	
Utilities (Line)		50 - 60	
Existing Pipeline		60 - 70	
Existing Transmission Lines		70 - 80	
Water Features		80 - 90	
Mapped Lakes and Rivers		90 - 100	



Coordinate System: NAD 1983 UTM Zone 20N
 Sources: Esri, NASA, NGA, USGS, Service Nova Scotia, GeoNOVA, SNSIS, NSNRR, ACCDC, IBA Canada, CNWI, HERE, Garmin, USGS

Date:	2026-05-04	Project #:	25-12648
Scale:	1:90,000	Drawing #:	9.2
Drawn By:	K. Wallace		
Checked By:	A. Doane		

