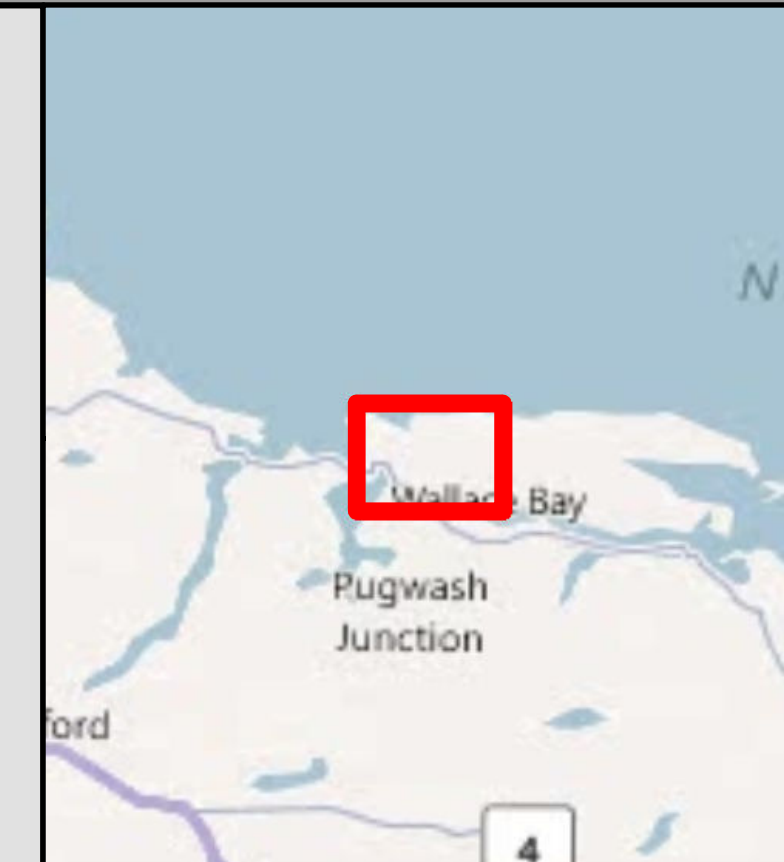
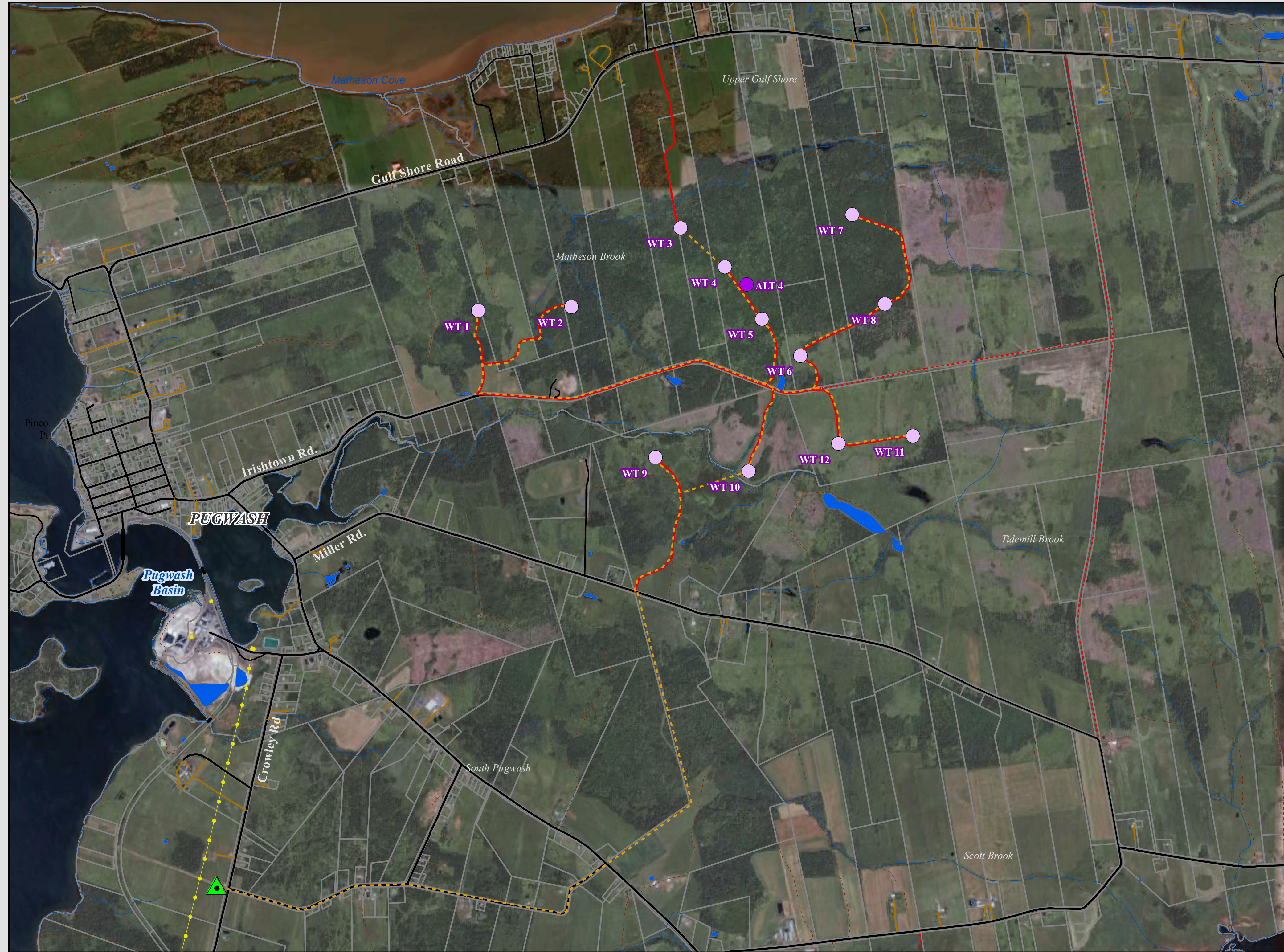


# TURBINE LOCATIONS



**Pugwash Wind Farm  
Turbine, Substation, and  
Road/Cable Route Layout**

## Legend

- Alternative Layout
- 2012 Proposed Turbine Locations
- Proposed Substation

## Road/Cable Connections

- Cable
  - Road
  - Power Line
  - Rivers and streams
  - Lakes and Waterbodies
  - Property Boundary
- ## Roads
- Paved Road
  - Unpaved Road
  - Lanes / Driveways
  - ROAD ruin/inactive/abandoned
  - Cart Track / Footpath

NOTE: If ALT 4 is used, WTG 4 and WTG 5 will be omitted from the layout.

Drawn By: MSD

Date: 16/01/2012

Approved:

Scale @ 11" x 17"

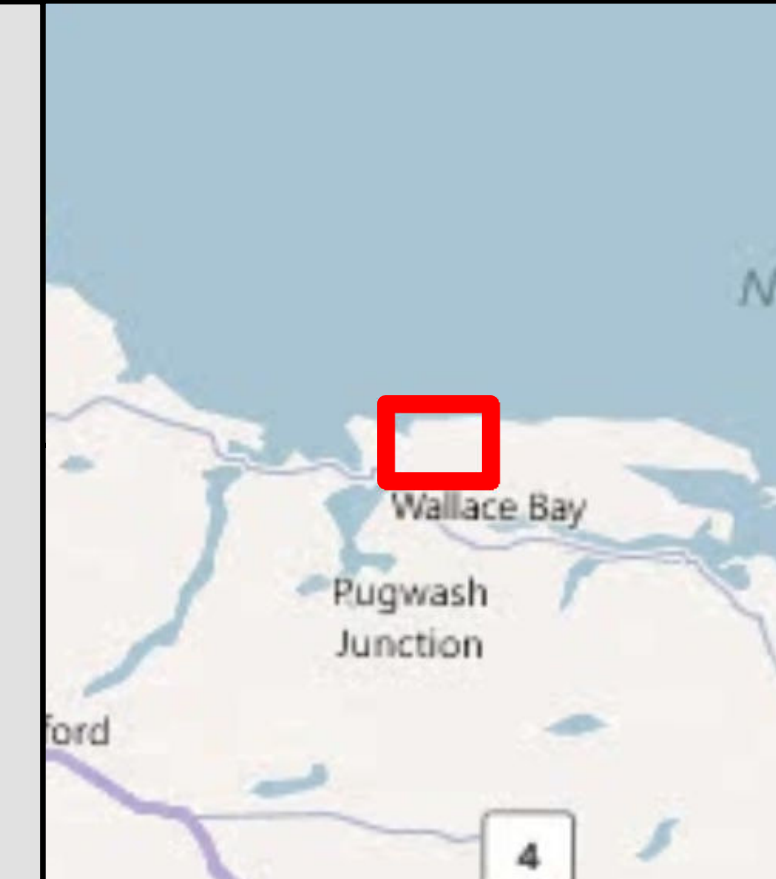
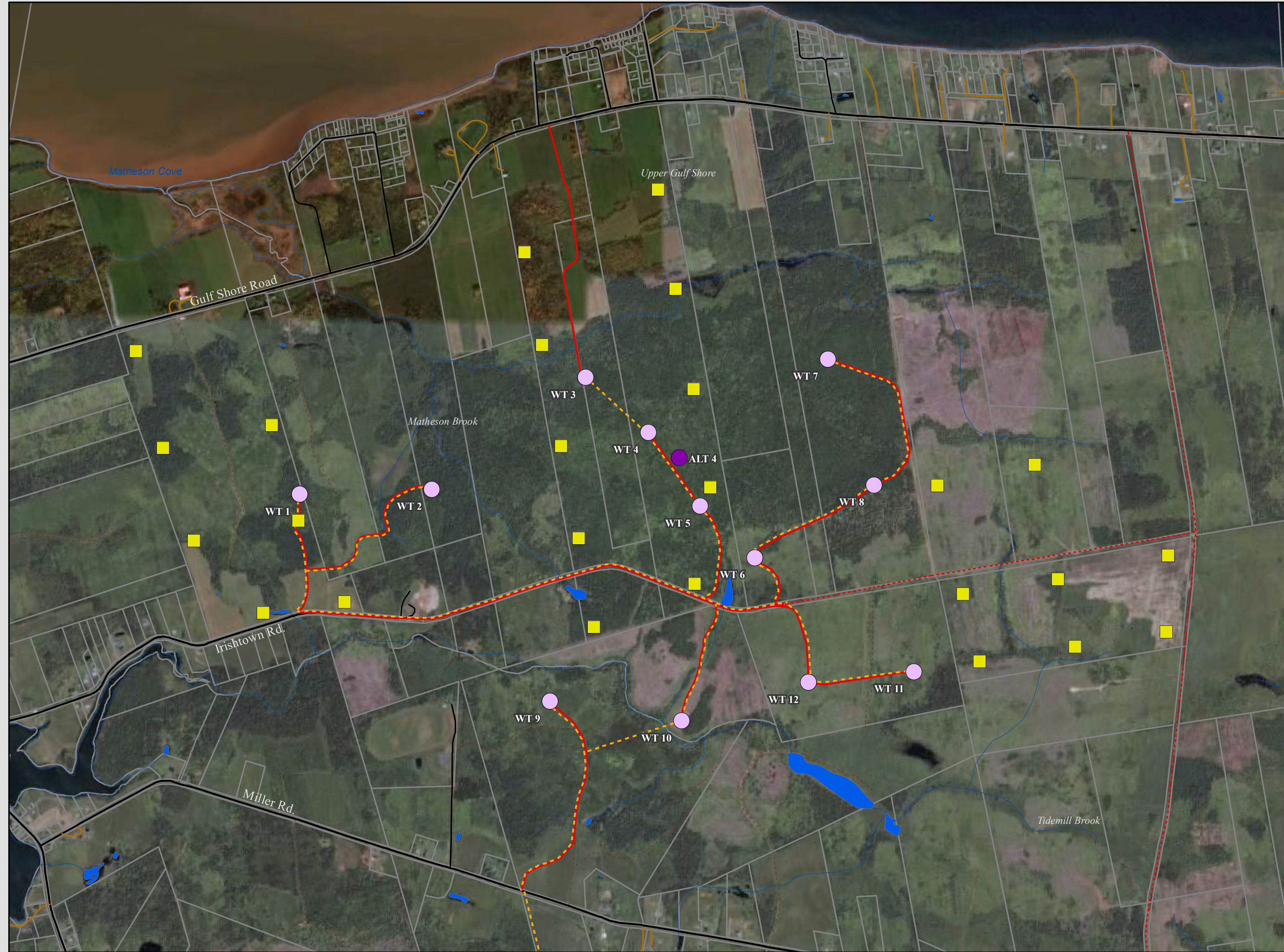


0 187.5 375 750 m

Coordinate System: NAD 1983 CSRS UTM Zone 20N  
Projection: Transverse Mercator  
Units: Meter



# CHANGES SINCE 2006/2007



**Pugwash Wind Farm  
2006 Layout versus 2012  
Layout**

## Legend

- 2006 Proposed Turbine Locations
- Alternative Turbine
- Proposed Turbine Locations

## Road/Cable Connections

- Cable
- Road
- Lakes and Waterbodies
- Rivers and streams
- Property Boundary

## Roads

- Paved Road
- Unpaved Road
- Lanes / Driveways
- ROAD ruin/inactive/abandoned
- Cart Track / Footpath

NOTE: If ALT 4 is used, WTG 4 and WTG 5 will be omitted from the layout.

Drawn By: MSD

Date: 16/01/2012

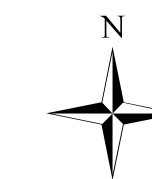
Approved:

Scale @ 11" x 17"



0 130 260 520 m

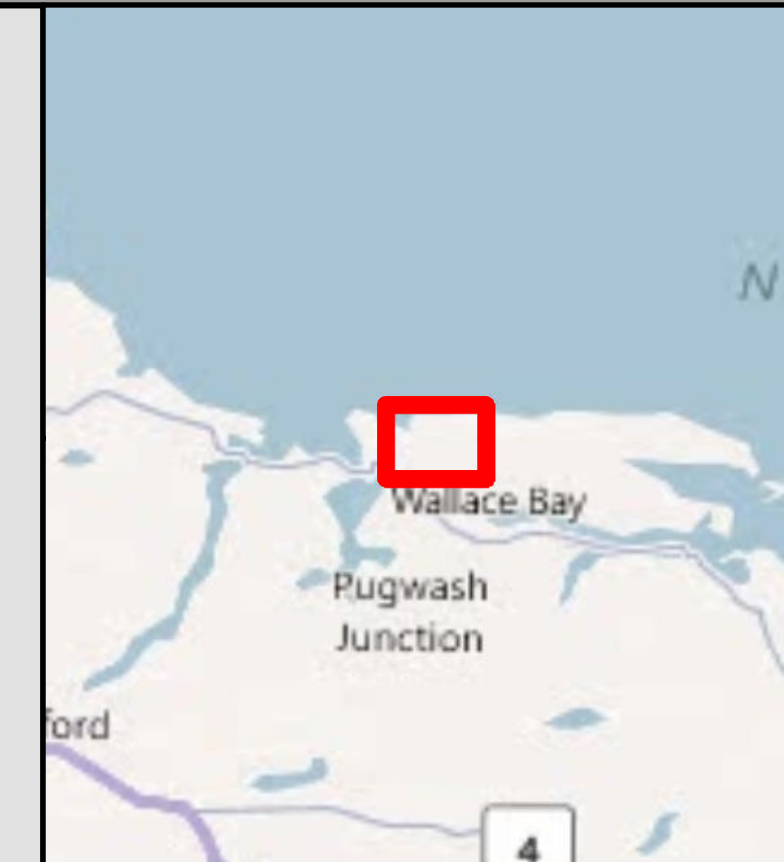
Coordinate System: NAD 1983 CSRS UTM Zone 20N  
Projection: Transverse Mercator  
Units: Meter



# SETBACKS

## MUNICIPALITY OF THE COUNTY OF CUMBER- LAND LAND USE BY-LAW:

The minimum set back for the lo-  
cation of a large scale wind turbine  
from an existing building intended  
for human occupation on a neigh-  
bouring property is the greater of  
600 meters or 3 times or 300 percent  
of the height of the wind turbine.



**Pugwash Wind Farm**  
*Distances to Property Boundaries  
and Structures*

### Legend

- Buildings and Dwellings
- Alternative Layout
- 2012 Proposed Turbine Locations
- Road/Cable Connections**
- Cable
- Road
- Roads**
- Paved Road
- Unpaved Road
- Lanes / Driveways
- ROAD ruin/inactive/abandoned
- Cart Track / Footpath
- 165m Buffer
- 600m Buffer
- 700m Buffer
- 800m Buffer
- 900m Buffer
- 1000m Buffer
- Rivers and streams
- Lakes and Waterbodies
- Property Boundary

NOTE: If ALT 4 is used, WTG 4 and WTG 5 will be omitted from the layout.

Drawn By: MSD

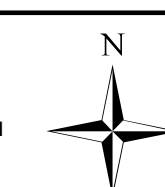
Date: 16/01/2012

Approved:

Scale @ 11" x 17"



0 130 260 520 m  
Coordinate System: NAD 1983 CSRS UTM Zone 20N  
Projection: Transverse Mercator  
Units: Meter



# SHADOW FLICKER ANALYSIS

