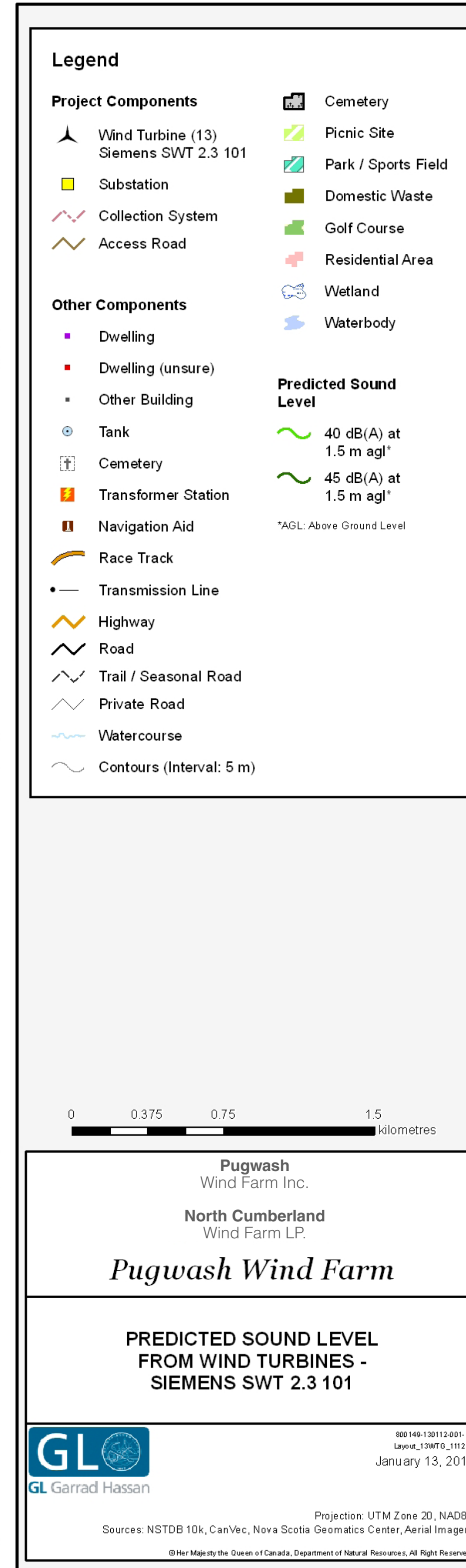
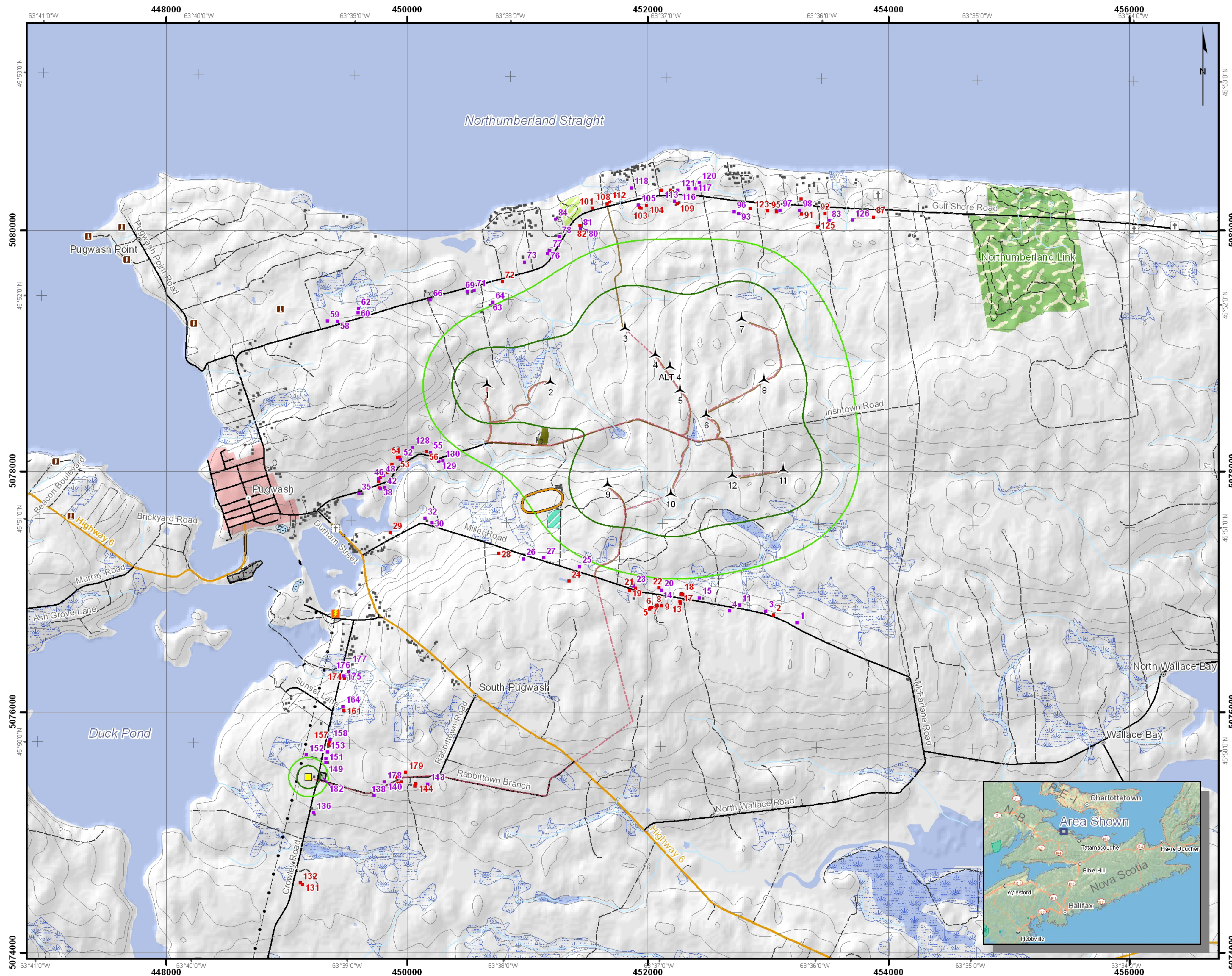


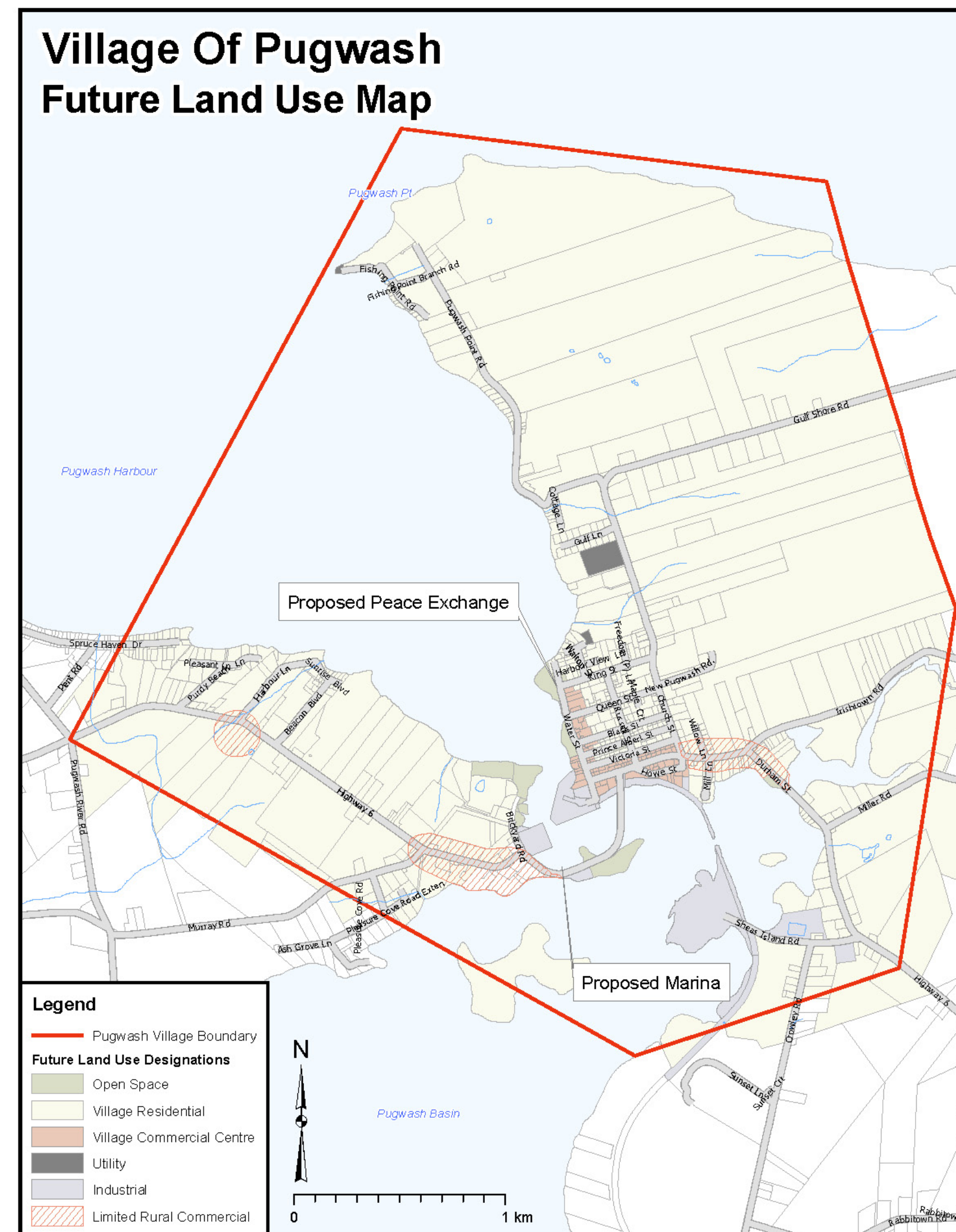
SOUND LEVEL ANALYSIS



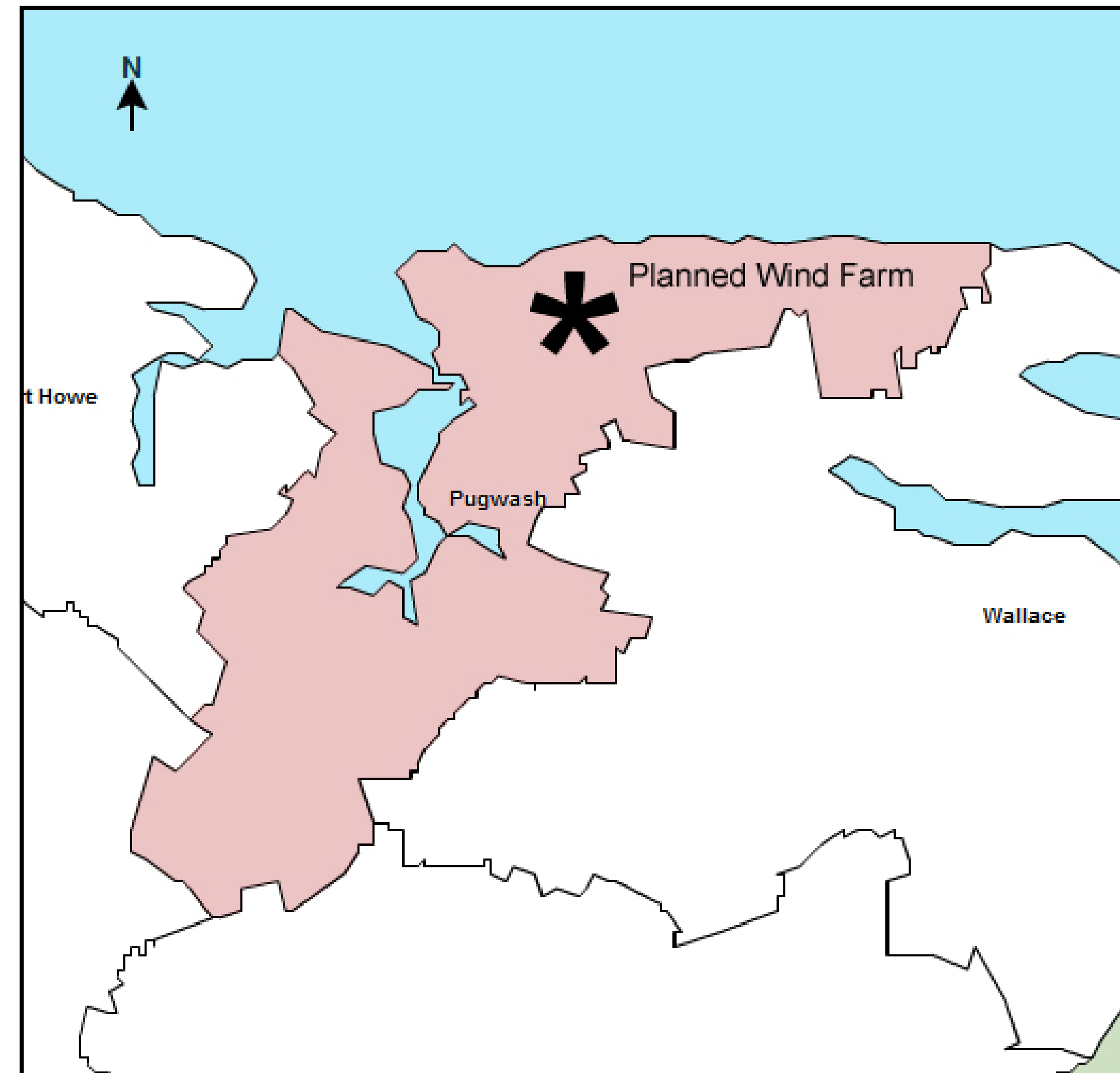
COMMUNITY/SOCIO-ECONOMIC FACTORS

KEY SETTLEMENTS AND LOCAL POPULATION TRENDS:

- The nearest community is the Village of Pugwash.
- The village has a population of approximately 900.
- The surrounding area has a population of approximately 1500.
- Cottage developments accommodate seasonal residents.
- The local population increases during the summer.
- The village has an elementary school, named after Cyrus Eaton, and a regional high school that draws students from around rural Cumberland County.



Village of Pugwash



Community of Pugwash

EXISTING LAND USE:

- The wind farm is situated on privately owned land to the north and south of Irishtown Road.
- The land is used for forestry and agriculture.
- The study area is used for recreational purposes, including hunting, fishing, swimming, cross-country skiing, snowshoeing and ATV use.
- Traditionally the Gulf Shore area was used for farming and forestry.
- The area continues to be farmed and harvested, while residents, both seasonal and permanent, use the area for recreational purposes.

ECONOMIC ACTIVITY:

- The main economy is built on fishing, mining, small-scale manufacturing and tourism.
- The Pugwash salt mine is the largest underground salt mine in Atlantic Canada; it employs approximately 200.
- Salt is shipped from Pugwash Harbour and transported by rail from a facility in nearby Oxford.
- Pugwash Harbour continues to be an important asset to the community.
- Pugwash benefits from general lobster seasons.
- Other employers in the area include Irving and MacTara, Basic Sprit, Seagull Pewter and Sunset Industries as well as the Fox Harbour Golf Resort.
- Within the rural area, most people are employed in agriculture and other resource-based services.



VISUAL IMPACT ASSESSMENT:

Four locations were chosen for visual impact simulations. Rendered views were exported from a digital terrain model and superimposed over field photography to simulate the expected visual impact of the Pugwash Wind Farm. CBCL Limited considers the photomontages to be realistic representations of the proposed wind farms.

VIEW FROM ROUTE 6 BRIDGE ACROSS TIDEMILL BROOK:

- The wind farm can be seen above the tree tops at the horizon. No objects in the foreground screen the wind turbines.
- The closest turbine in this image is turbine 1 in centre of the photo, which is approximately 1700 m away from the view point.
- All turbines area visible from this view point.
- The entire wind farm spreads over about one third of the available panoramic view.



VISUAL IMPACT



VISUAL IMPACT ASSESSMENT:

Four locations were chosen for visual impact simulations. Rendered views were exported from a digital terrain model and superimposed over field photography to simulate the expected visual impact of the Pugwash Wind Farm. CBCL Limited considers the photomontages to be realistic representations of the proposed wind farms.

VIEW FROM COTTAGES ALONG GULF SHORE ROAD AT DAN R DRIVE:



- The wind farm can only be partially seen due to screening tree growth and rising topography in the fore- and mid-ground of the view.
- The closest turbines in this image is turbine 7, which is approximately 1200 m away from the view point.
- Most turbine towers are not visible due to screening.
- The entire wind farm spreads over about one quarter of the available panoramic view.





VISUAL IMPACT ASSESSMENT:

Four locations were chosen for visual impact simulations. Rendered views were exported from a digital terrain model and superimposed over field photography to simulate the expected visual impact of the Pugwash Wind Farm. CBCL Limited considers the photomontages to be realistic representations of the proposed wind farms.

VIEW FROM NORTHUMBERLAND LINKS GOLF CLUB :

- The wind farm can only be partially seen due to screening tree growth and rising topography in the mid-ground of the view.
- The closest turbines in this image are turbines 7 and 8, which are approximately 2500 m away from the view point.
- Most turbine towers are not visible and only a view turbine blades can be seen.
- The entire wind farm spreads over about one third of the available panoramic view.





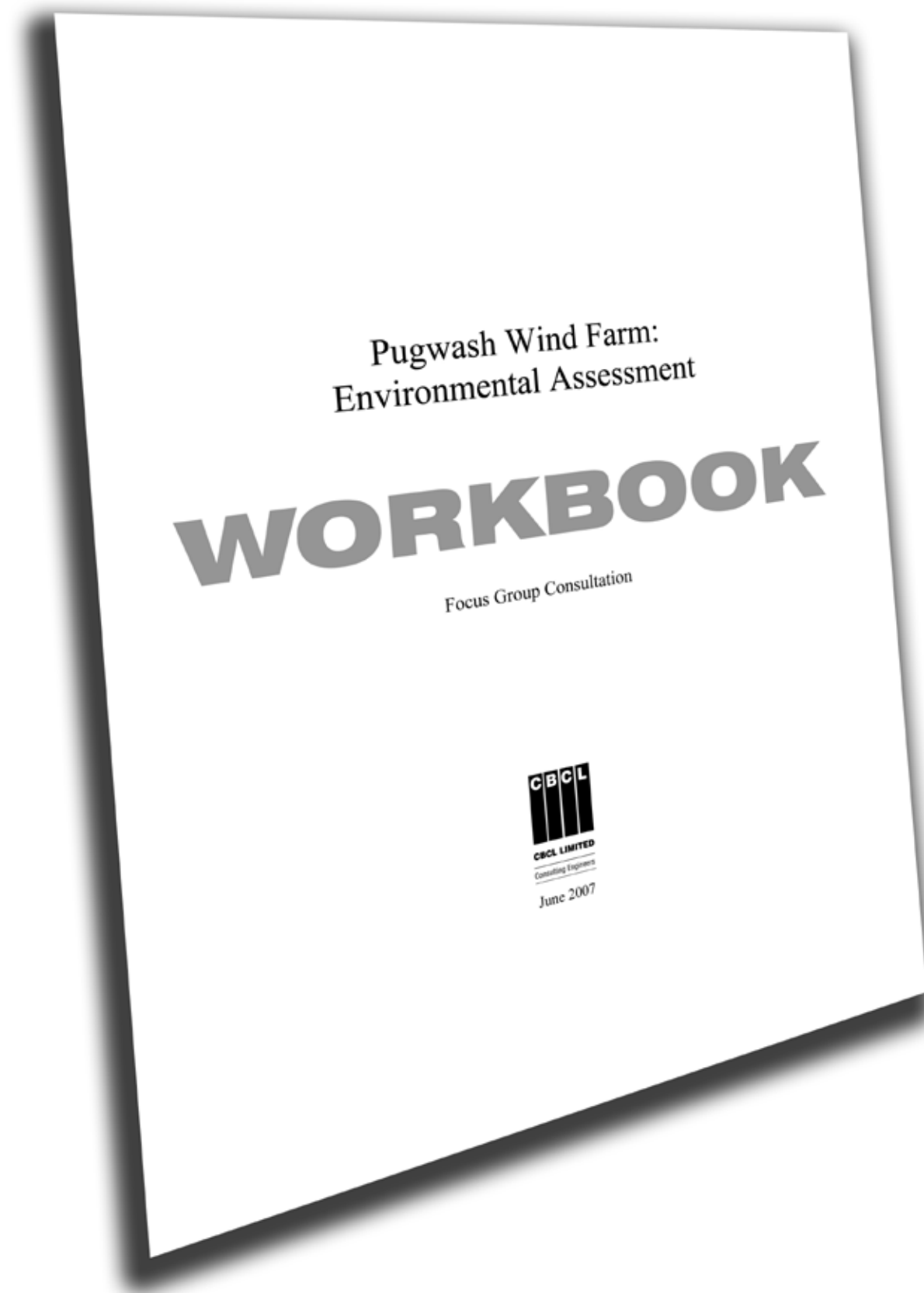
VISUAL IMPACT ASSESSMENT:

Four locations were chosen for visual impact simulations. Rendered views were exported from a digital terrain model and superimposed over field photography to simulate the expected visual impact of the Pugwash Wind Farm. CBCL Limited considers the photomontages to be realistic representations of the proposed wind farms.

VIEW FROM IRISHTOWN ROAD :

- Two thirds of the wind turbines can be seen from this viewpoint.
- The closest turbines in this image is turbine 1, which is approximately 430 m away from the view point.
- Turbines 9 through 12 are not visible due to tree screening.
- The entire wind farm spreads over about two thirds of the available panoramic view.





The proponent is committed to keeping you informed, to listen to and acknowledge concerns and aspirations, and to provide feedback on how your input has influenced our decisions.

CONSULTATION EVENTS:

- open houses
- focus group sessions
- questionnaires
- discussion workbooks

YOUR CONCERNS:

- aesthetics
- noise
- enjoyment of the area
- property values
- economic development

OUR RESPONSE:

- Reduced the project size from 27 WTGs to 12
- Increased the distance between the wind farm and the Gulf Shore Road
- The proponent will meet, and in most cases, exceed the Municipality's 600 m set-back by-law
- Carried out site specific studies on noise and flicker
- The proponent has renewed, or established, long term land leases with a number of area residents
- Project construction and operation will offer both short term and long term jobs
- The proponent is preparing a Community Engagement Plan that will detail company protocols to address concerns and track company responses

PROJECT SCHEDULE AND ACTIVITIES

2012

Execution dependent on the receipt of requisite approvals and authorizations

2013

The proponent plans to construct and install the WTGs in one phase from mid to late 2013

Site clearing, road construction, turbine delivery and erection, installation of the cables and connection to the grid will be completed within 4 – 5 months

2014

Commissioning and energy production late 2013 – early 2014

Construction:

- Involves site, grid construction and geotechnical surveys
- Development and execution of erosion control plans
- Preparing and constructing access roads and laydown areas
- Excavation and pouring of concrete foundation for foundation
- Transportation of the WTG sections on flatbed trucks
- Installation of the tower sections, nacelle and blades
- Installation of the electrical systems including new substation
- Restoration of disturbed vegetation

Operation and Maintenance:

- Operational on a continual basis except under circumstances of mechanical breakdown, extreme weather conditions or maintenance activity

Decommissioning:

- Design life of a wind farm is typically 20 – 30 years, but can be longer
- After useful life the wind farm will be decommissioned and dismantled
- Foundation pads regraded and revegetated

Thank you for your attendance!

*Please take the time to complete the exit questionnaire
and drop it in the box.*

WIND FARM OPEN HOUSE

Atlantic Wind Power Corporation and Pugwash Wind Farm Inc. invite members of the public to an Open House regarding a proposed wind farm in north Cumberland County, near the village of Pugwash, Nova Scotia.

Project information will be available for viewing and project team members will be on hand to answer questions.

St. Thomas More Catholic Church Hall
corner of Black & Church Streets, Pugwash, NS
3:00 pm - 8:00 pm
Tuesday and Wednesday
January 17 and 18, 2012
Light refreshments will be served

For further information, please contact:
Clair Peers at (902) 895-0788 or 897-5951, or
Ann Wilkie at CBCL Limited (902) 492-6764



CBCL LIMITED

5440603

PUGWASH PROPOSED WIND FARM

Open House – Tuesday and Wednesday, January 17th & 18th, 2012

Questionnaire

Thank you for taking the time to attend this Information Session. It would be helpful if you could take a few minutes to answer the following questions. Your observations and input are important to us. Please complete and leave the questionnaire, or mail to:

CBCL Limited
1489 Hollis Street
PO Box 606
Halifax, Nova Scotia B3J 2R7
Attention: Ann Wilkie
Or fax to: (902) 423-3938

1. Name and Address:

2. Do you live near the proposed wind farm?

Yes _____ No _____ Approximate Distance _____

3. Do you have any environmental or related knowledge of the site which you think might be of value to us? If so, please detail:

4. Are you in favour of the proposed development?

5. Please tell us any thoughts or concerns that you have regarding the proposed development.

If you require additional information or wish to talk with the project team, please contact:

Ann Wilkie at (902) 492-6764

Clair Peers at (902) 897-5951 or (902) 895-0788