

**VISUAL SIMULATION**



**UNRENDERED PHOTO**

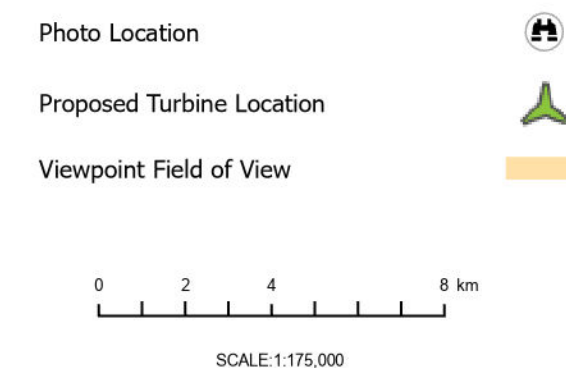
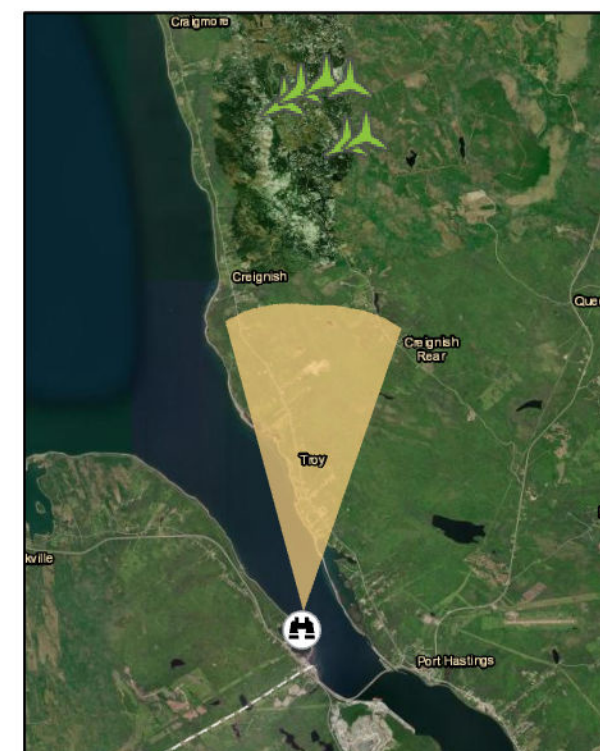


**RHODENA WIND PROJECT**



**TECHNICAL INFORMATION**

Visual Simulation Location:	Aulds Cove Motel
View Coordinates:	Latitude: 45.6557°N Longitude: 61.4393°W Easting: 621588.0m Northing: 5056982.0m
Distance to Nearest Turbine:	11.46km
Direction of View:	Northeast, 5°
Camera Make/ Model:	Canon EOS REBEL T7
Lens:	50 mm
Image Resolution:	6000 x 4000
Weather Conditions:	Overcast
Date of Photo:	2024/09/09
Time of Photo:	14:25
Photo Credit:	Strum Consulting



- References**
1. Data Sources: GeoNB, Client
  2. Basemaps: Esri, DigitalGlobe, GeoEye, Earthstar Geographics, CNES/Airbus DS, USDA, USGS, AeroGRID, IGN, and the GIS User Community
  3. Projection: NAD83 UTM Zone 19

Date: October 29, 2024	Project #: 24-9952
Drawn By: E. Johnson	Drawing #: <b>10.1C</b>
Checked By: H. Mosher	



**VISUAL SIMULATION**



**UNRENDERED PHOTO**



**RHODENA WIND PROJECT**



**TECHNICAL INFORMATION**

Visual Simulation Location:	Craigmore Enduro Park
View Coordinates:	Latitude: 45.6557°N Longitude: 61.4393°W Easting: 618847.0m Northing: 5069927.0m
Distance to Nearest Turbine:	2.39km
Direction of View:	East, 93°
Camera Make/ Model:	Canon EOS REBEL T7
Lens:	50 mm
Image Resolution:	6000 x 4000
Weather Conditions:	Overcast
Date of Photo:	2024/09/09
Time of Photo:	16:43
Photo Credit:	Strum Consulting

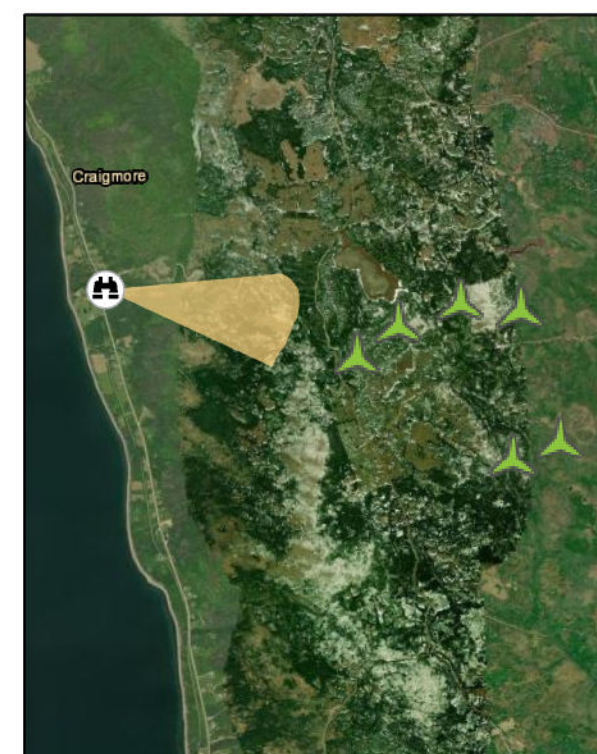



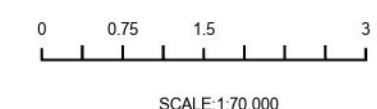


Photo Location	
Proposed Turbine Location	
Viewpoint Field of View	



**References**

1. Data Sources: GeoNB, Client
2. Basemaps: Esri, DigitalGlobe, GeoEye, Earthstar Geographics, CNES/Airbus DS, USDA, USGS, AeroGRID, IGN, and the GIS User Community
3. Projection: NAD83 UTM Zone 19

Date:  
October 29, 2024

Project #:  
24-9952

Drawn By:  
E. Johnson

Drawing #:

**10.1D**

Checked By:  
H. Mosher



**VISUAL SIMULATION**



**UNRENDERED PHOTO**

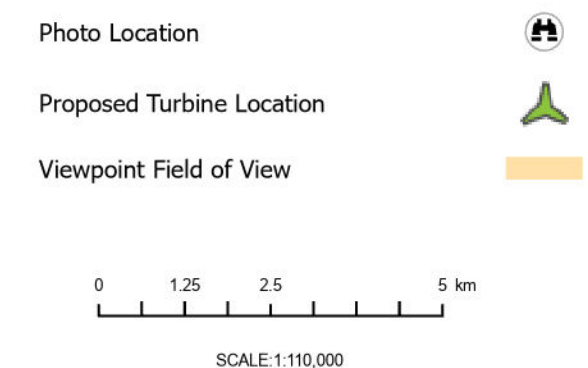
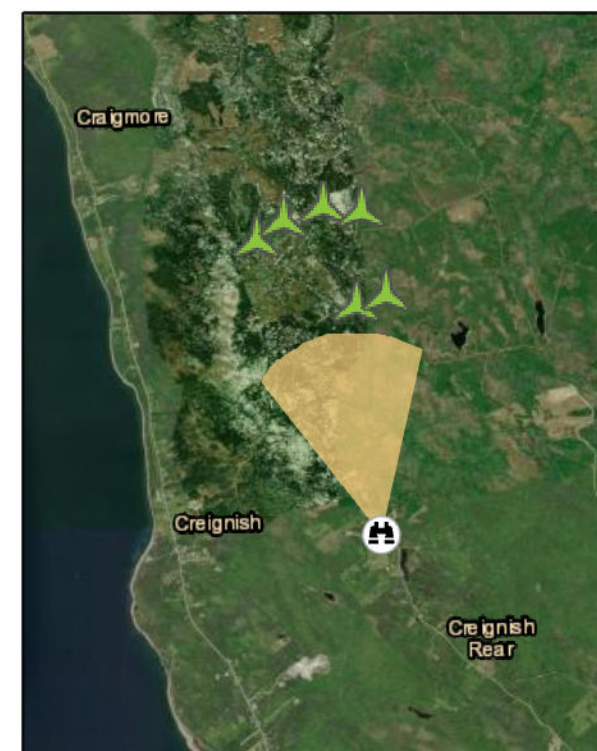


**RHODENA WIND PROJECT**



**TECHNICAL INFORMATION**

Visual Simulation Location:	General Line 1 - Turbine Rd
View Coordinates:	Latitude: 45.7274°N Longitude: 61.4194°W Easting: 622987.0m Northing: 5064986.0m
Distance to Nearest Turbine:	2.39km
Direction of View:	Northwest, 348°
Camera Make/ Model:	Canon EOS REBEL T7
Lens:	50 mm
Image Resolution:	6000 x 4000
Weather Conditions:	Overcast
Date of Photo:	2024/09/09
Time of Photo:	15:53
Photo Credit:	Strum Consulting



- References**
1. Data Sources: GeoNB, Client
  2. Basemaps: Esri, DigitalGlobe, GeoEye, Earthstar Geographics, CNES/Airbus DS, USDA, USGS, AeroGRID, IGN, and the GIS User Community
  3. Projection: NAD83 UTM Zone 19

Date: October 29, 2024	Project #: 24-9952
Drawn By: E. Johnson	Drawing #: <b>10.1E</b>
Checked By: H. Mosher	



**VISUAL SIMULATION**



**UNRENDERED PHOTO**






**RHODENA WIND PROJECT**

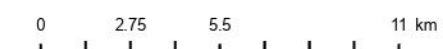


**TECHNICAL INFORMATION**

Visual Simulation Location: Judique - Route 19  
 View Coordinates: Latitude: 45.8757°N  
 Longitude: 61.4900°W  
 Easting: 617145.0m  
 Northing: 5081391.0m  
 Distance to Nearest Turbine: 12.52km  
 Direction of View: Southeast, 144°  
 Camera Make/ Model: Canon EOS REBEL T7  
 Lens: 50 mm  
 Image Resolution: 6000 x 4000  
 Weather Conditions: Overcast  
 Date of Photo: 2024/09/09  
 Time of Photo: 17:12  
 Photo Credit: Strum Consulting



Proposed Turbine Location   
 Viewpoint Field of View   
 Photo Location 



SCALE: 1:232,189



**References**

1. Data Sources: GeoNB, Client
2. Basemaps: Esri, DigitalGlobe, GeoEye, Earthstar Geographics, CNES/Airbus DS, USDA, USGS, AeroGRID, IGN, and the GIS User Community
3. Projection: NAD83 UTM Zone 19

Date: October 30, 2024	Project #: 24-9952
Drawn By: E. Johnson	Drawing #: <b>10.1F</b>
Checked By: H. Mosher	



**VISUAL SIMULATION**



**UNRENDERED PHOTO**



**RHODENA WIND PROJECT**



**TECHNICAL INFORMATION**

Visual Simulation Location:	Princeville
View Coordinates:	Latitude: 45.8757°N Longitude: 61.4900°W Easting: 632367.0m Northing: 5068941.0m
Distance to Nearest Turbine:	9.33km
Direction of View:	West, 263°
Camera Make/ Model:	Canon EOS REBEL T7
Lens:	50 mm
Image Resolution:	6000 x 4000
Weather Conditions:	Overcast
Date of Photo:	2024/09/09
Time of Photo:	15:26
Photo Credit:	Strum Consulting

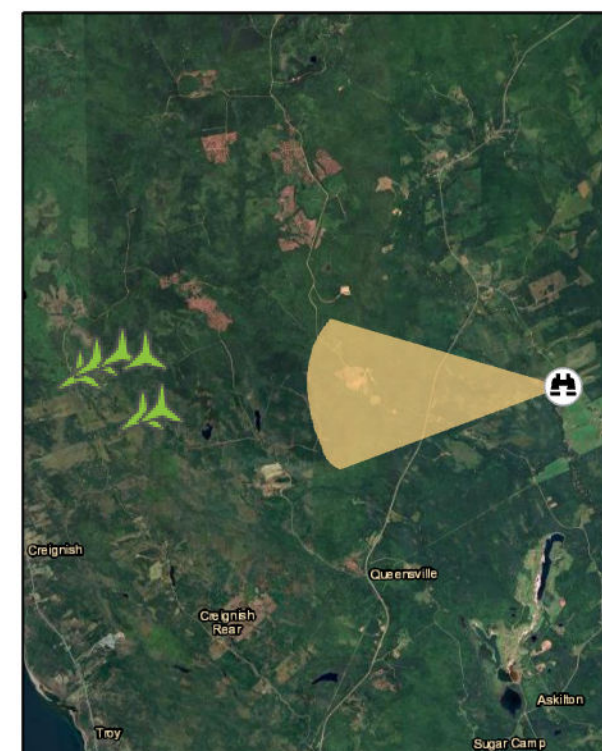





Photo Location 


Proposed Turbine Location 

Viewpoint Field of View 

0 2 4 8 km

SCALE: 1:175,000

N



- References**
1. Data Sources: GeoNB, Client
  2. Basemaps: Esri, DigitalGlobe, GeoEye, Earthstar Geographics, CNES/Airbus DS, USDA, USGS, AeroGRID, IGN, and the GIS User Community
  3. Projection: NAD83 UTM Zone 19

Date: October 30, 2024	Project #: 24-9952
Drawn By: E. Johnson	Drawing #: <b>10.1G</b>
Checked By: H. Mosher	



**VISUAL SIMULATION**



**UNRENDERED PHOTO**

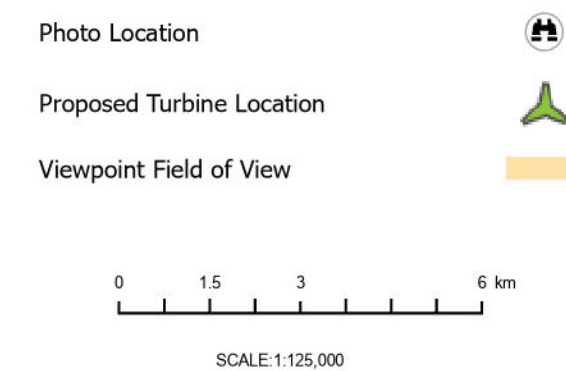
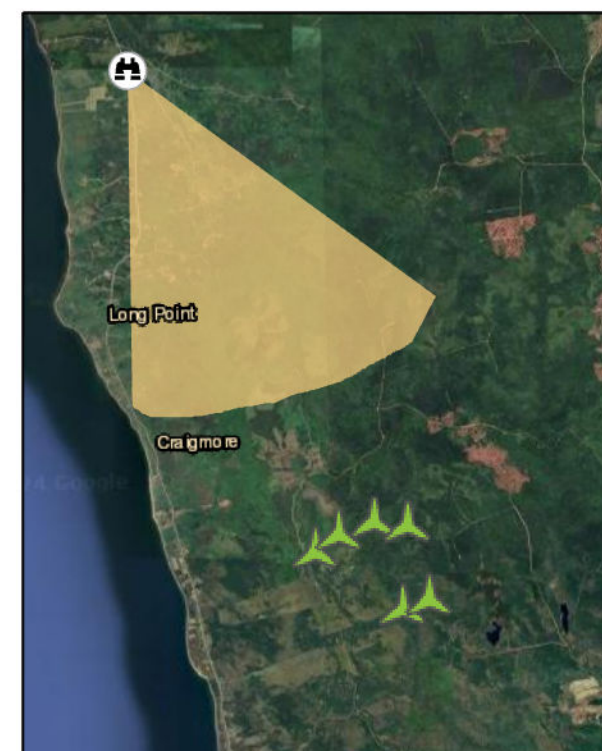


**RHODENA WIND PROJECT**



**TECHNICAL INFORMATION**

Visual Simulation Location:	Walker's Cove
View Coordinates:	Latitude: 45.8386°N Longitude: 61.4797°W Easting: 632367.0m Northing: 5068941.0m
Distance to Nearest Turbine:	8.33km
Direction of View:	Southeast, 151°
Camera Make/ Model:	Canon EOS REBEL T7
Lens:	50 mm
Image Resolution:	6000 x 4000
Weather Conditions:	Overcast
Date of Photo:	2024/09/09
Time of Photo:	16:58
Photo Credit:	Strum Consulting



**References**

1. Data Sources: GeoNB, Client
2. Basemaps: Esri, DigitalGlobe, GeoEye, Earthstar Geographics, CNES/Airbus DS, USDA, USGS, AeroGRID, IGN, and the GIS User Community
3. Projection: NAD83 UTM Zone 19

Date:	October 30, 2024	Project #:	24-9952
Drawn By:	E. Johnson	Drawing #:	<b>10.1H</b>
Checked By:	H. Mosher		

