

**Rhodena Wind Farm**  
Communities

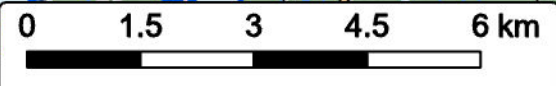


Study Area	
Assessment Area	
County Boundary	
Primary Watershed Boundary	
<b>Utilities (line)</b>	
Existing Transmission Lines	
<b>Transportation</b>	
Trans-Canada Highway	
Road	
Unpaved Road	
<b>Water Features</b>	
Mapped Stream	
Mapped Indefinite Stream	
Mapped Lakes and Rivers	
Mapped Wet Areas	



Coordinate System: NAD83 UTM Zone 20N Sources: ESRI Basemaps, GeoNOVA, SNSIS, NSNRR, ACCDC, IBA Canada, CNVI, HERE, Garmin, USGS

Date:	Oct 2024	Project #:	24-9952
Scale:	1:100,000	Drawing #:	<b>2.1</b>
Drawn By:	K. Wallace		
Checked By:	H. Mosher		



# Rhodena Wind Farm

Site Overview

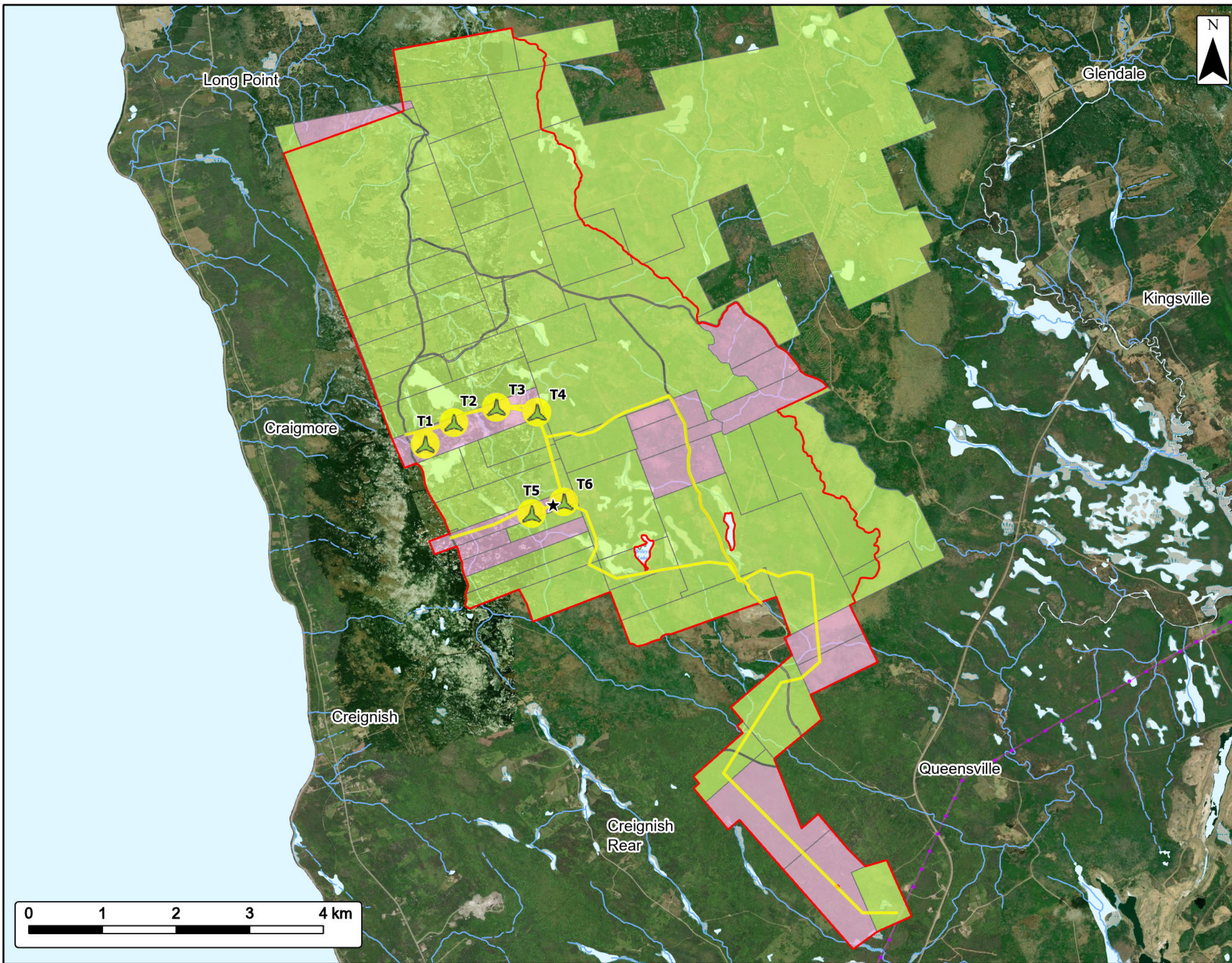


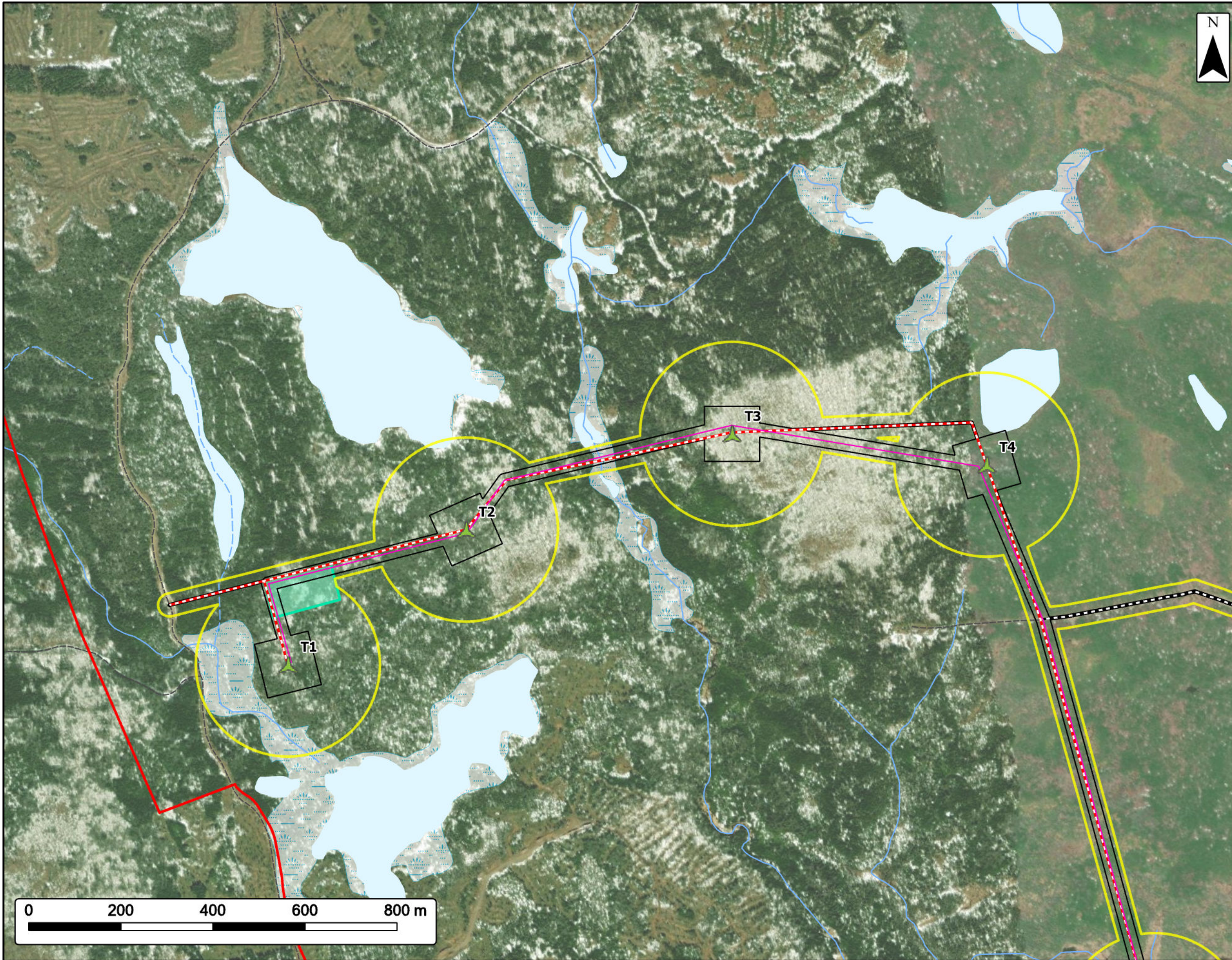
- Study Area
- Assessment Area
- Proposed Turbine Location
- Substation
- Crown
- Private
- Utilities (line)**
  - Existing Transmission Lines
- Water Features**
  - Mapped Stream
  - Mapped Indefinite Stream
  - Mapped Lakes and Rivers
  - Mapped Wet Areas



Coordinate System: NAD83 UTM Zone 20N Sources: ESRI Basemaps, GeoNOVA, SNSIS, NSNRR, ACCDC, IBA Canada, CNWI, HERE, Garmin, USGS

Date:	Oct 2024	Project #:	24-9952
Scale:	1:50,000	Drawing #:	<b>2.2</b>
Drawn By:	K. Wallace		
Checked By:	H. Mosher		





**Rhodena Wind Farm**  
Infrastructure



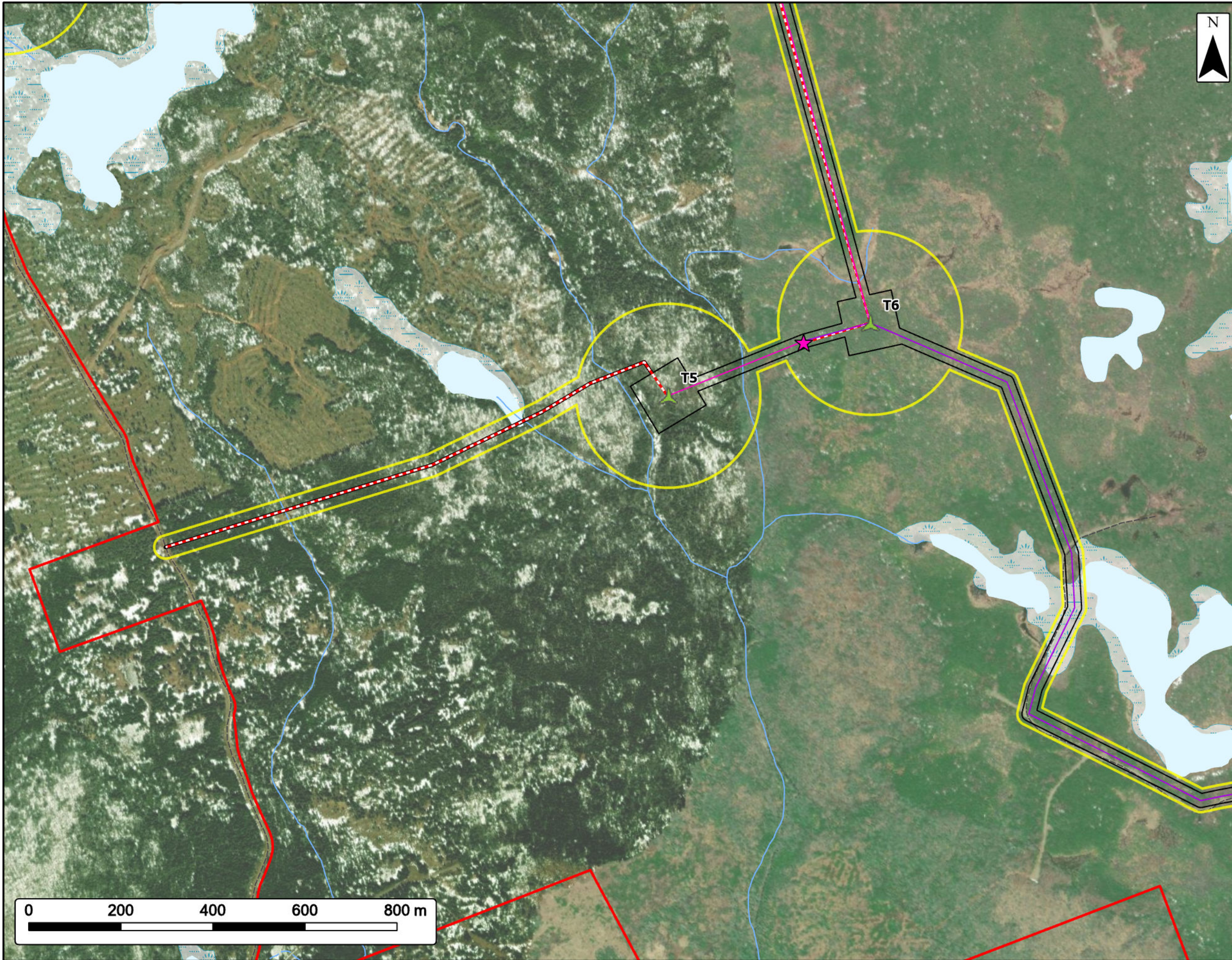
Study Area	
Assessment Area	
Project Footprint	
Proposed Turbine Location	
Laydown Area	
Existing Road to be Upgraded	
Proposed New Road	
Collector Line	
<b>Transportation</b>	
Unpaved Road	
<b>Water Features</b>	
Mapped Stream	
Mapped Indefinite Stream	
Mapped Lakes and Rivers	
Mapped Wet Areas	



Coordinate System: NAD83 UTM Zone 20N Sources: ESRI Basemaps, GeoNOVA, SNSIS, NSNRR, ACCDC, IBA Canada, CNWI, HERE, Garmin, USGS

Date:	Oct 2024	Project #:	24-9952
Scale:	1:8,000	Drawing #:	<b>2.3A</b>
Drawn By:	K. Wallace		
Checked By:	H. Mosher		





**Rhodena Wind Farm**  
Infrastructure



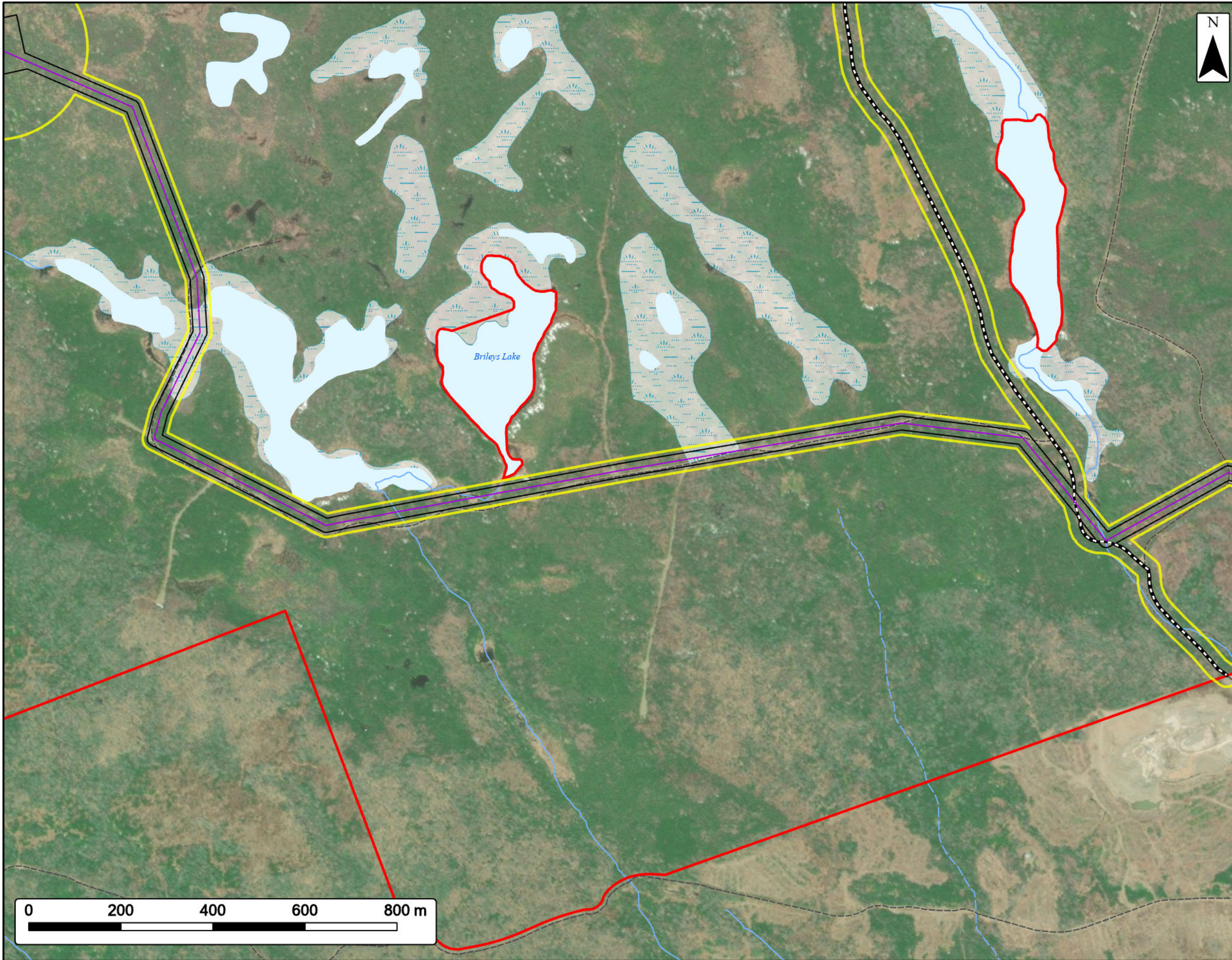
- Study Area
- Assessment Area
- Project Footprint
- Proposed Turbine Location
- Substation
- Proposed New Road
- Collector Line
- Transmission Line
- Transportation**
- Unpaved Road
- Water Features**
- Mapped Stream
- Mapped Indefinite Stream
- Mapped Lakes and Rivers
- Mapped Wet Areas



Coordinate System: NAD83 UTM Zone 20N Sources: ESRI Basemaps, GeoNOVA, SNSIS, NSNRR, ACCDC, IBA Canada, CNWI, HERE, Garmin, USGS

Date:	Oct 2024	Project #:	24-9952
Scale:	1:8,000	Drawing #:	<b>2.3B</b>
Drawn By:	K. Wallace		
Checked By:	H. Mosher		





**Rhodena Wind Farm**  
Infrastructure



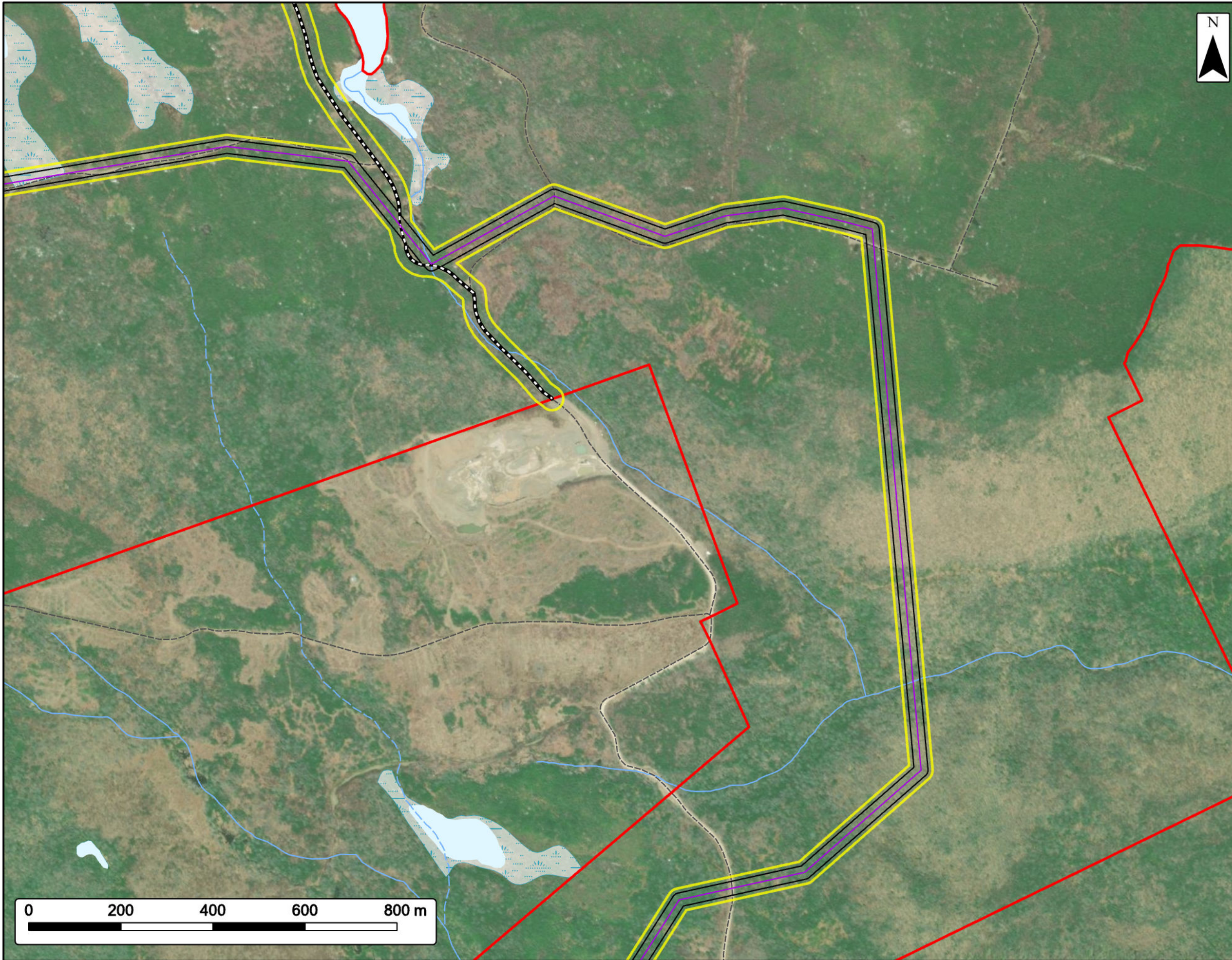
Study Area	
Assessment Area	
Project Footprint	
Proposed Turbine Location	
Existing Road to be Upgraded	
Transmission Line	
<b>Transportation</b>	
Unpaved Road	
<b>Water Features</b>	
Mapped Stream	
Mapped Indefinite Stream	
Mapped Lakes and Rivers	
Mapped Wet Areas	



Coordinate System: NAD83 UTM Zone 20N Sources: ESRI Basemaps, GeoNOVA, SNSIS, NSNRR, ACCDC, IBA Canada, CNWI, HERE, Garmin, USGS

Date:	Oct 2024	Project #:	24-9952
Scale:	1:8,000	Drawing #:	<b>2.3C</b>
Drawn By:	K. Wallace		
Checked By:	H. Mosher		





**Rhodena Wind Farm**  
Infrastructure

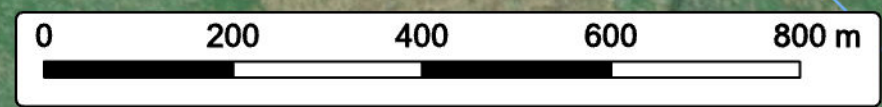


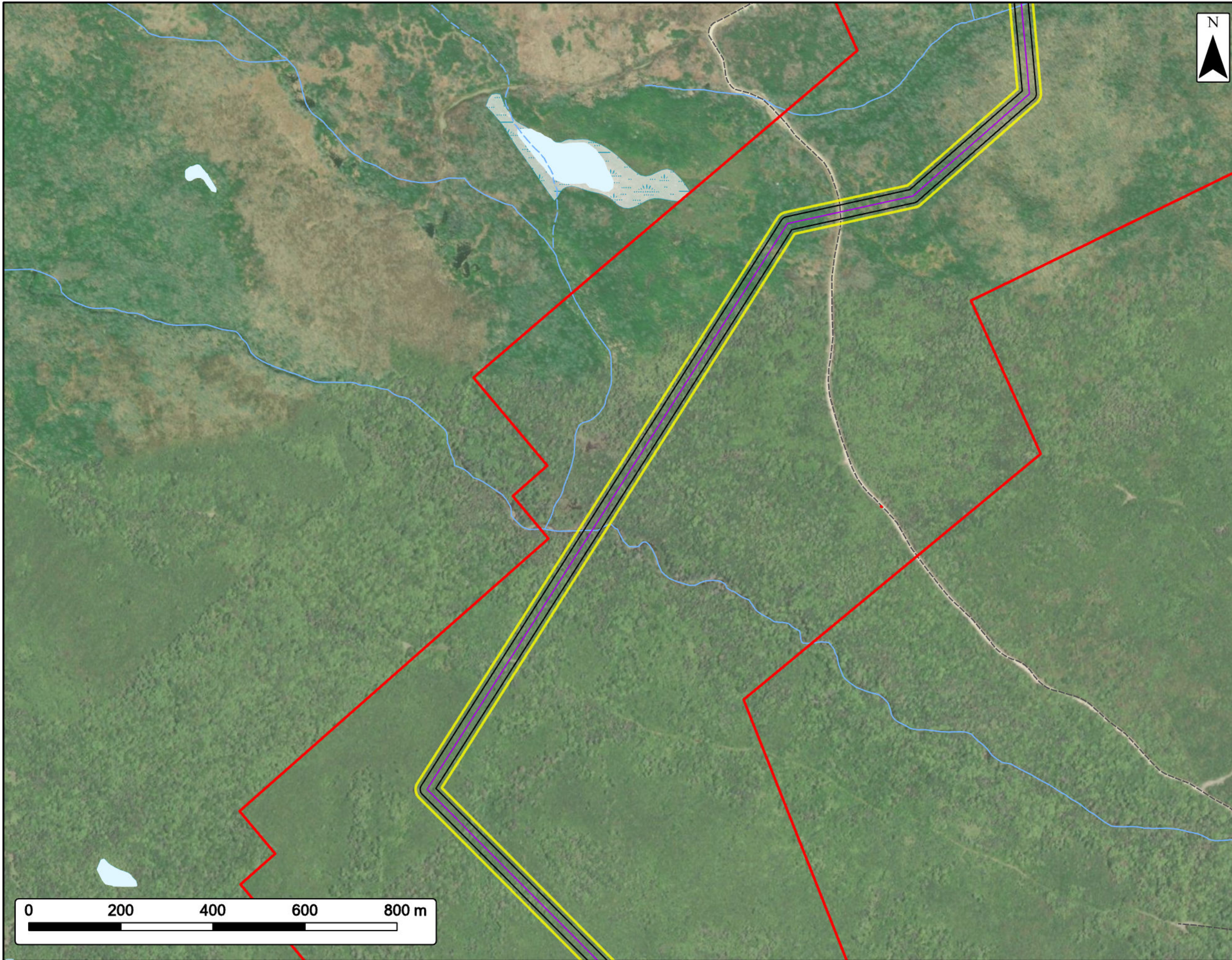
Study Area	
Assessment Area	
Project Footprint	
Existing Road to be Upgraded	
Transmission Line	
<b>Transportation</b>	
Unpaved Road	
<b>Water Features</b>	
Mapped Stream	
Mapped Indefinite Stream	
Mapped Lakes and Rivers	
Mapped Wet Areas	



Coordinate System: NAD83 UTM Zone 20N Sources: ESRI Basemaps, GeoNOVA, SNSIS, NSNRR, ACCDC, IBA Canada, CNWI, HERE, Garmin, USGS

Date:	Oct 2024	Project #:	24-9952
Scale:	1:8,000	Drawing #:	<b>2.3D</b>
Drawn By:	K. Wallace		
Checked By:	H. Mosher		





**Rhodena Wind Farm**  
Infrastructure



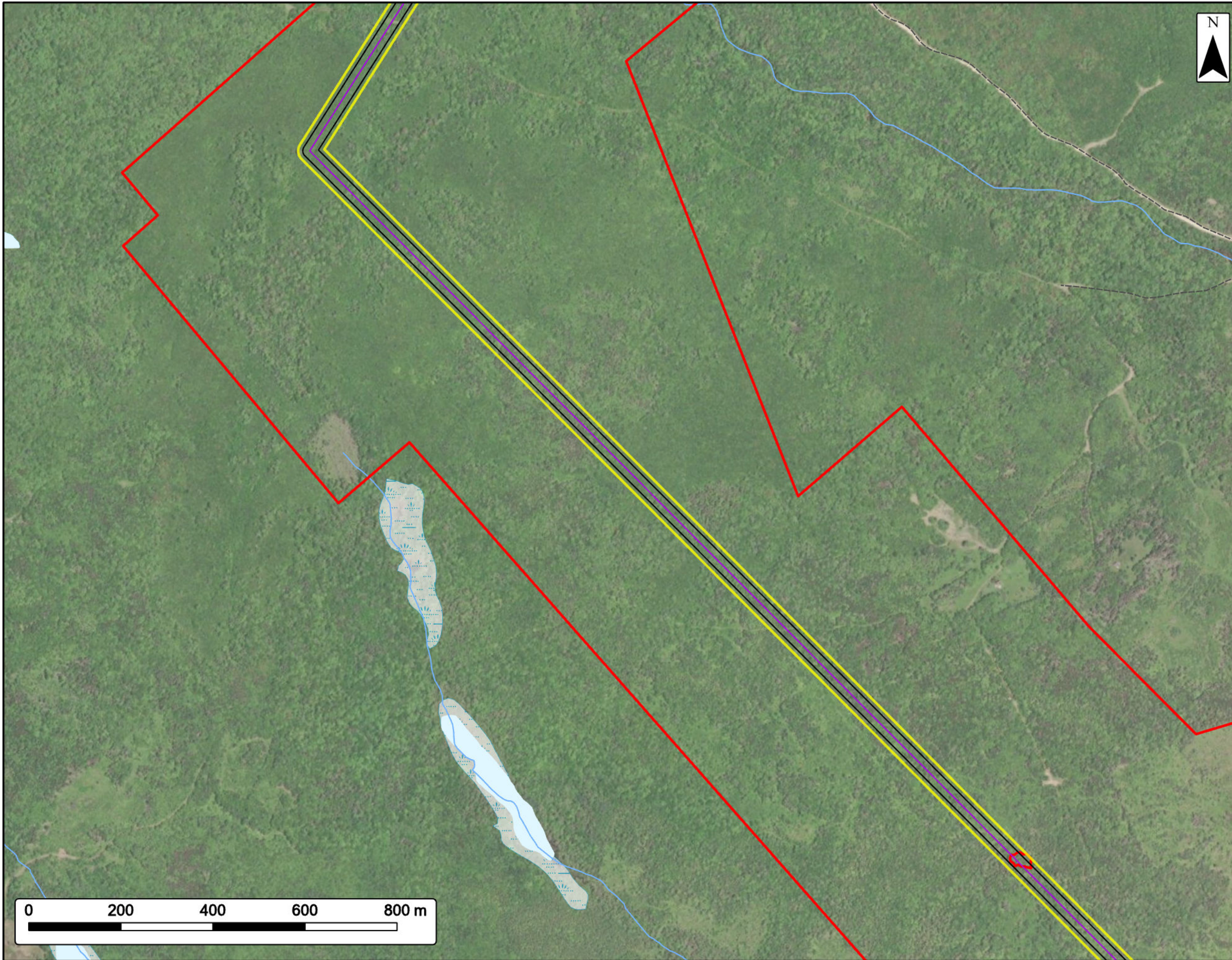
Study Area	
Assessment Area	
Project Footprint	
Transmission Line	
<b>Transportation</b>	
Unpaved Road	
<b>Water Features</b>	
Mapped Stream	
Mapped Indefinite Stream	
Mapped Lakes and Rivers	
Mapped Wet Areas	



Coordinate System: NAD83 UTM Zone 20N Sources: ESRI Basemaps, GeoNOVA, SNSIS, NSNRR, ACCDC, IBA Canada, CNWI, HERE, Garmin, USGS

Date:	Oct 2024	Project #:	24-9952
Scale:	1:8,000	Drawing #:	<b>2.3E</b>
Drawn By:	K. Wallace		
Checked By:	H. Mosher		





**Rhodena Wind Farm**  
Infrastructure



Study Area	
Assessment Area	
Project Footprint	
Transmission Line	
<b>Transportation</b>	
Unpaved Road	
<b>Water Features</b>	
Mapped Stream	
Mapped Lakes and Rivers	
Mapped Wet Areas	

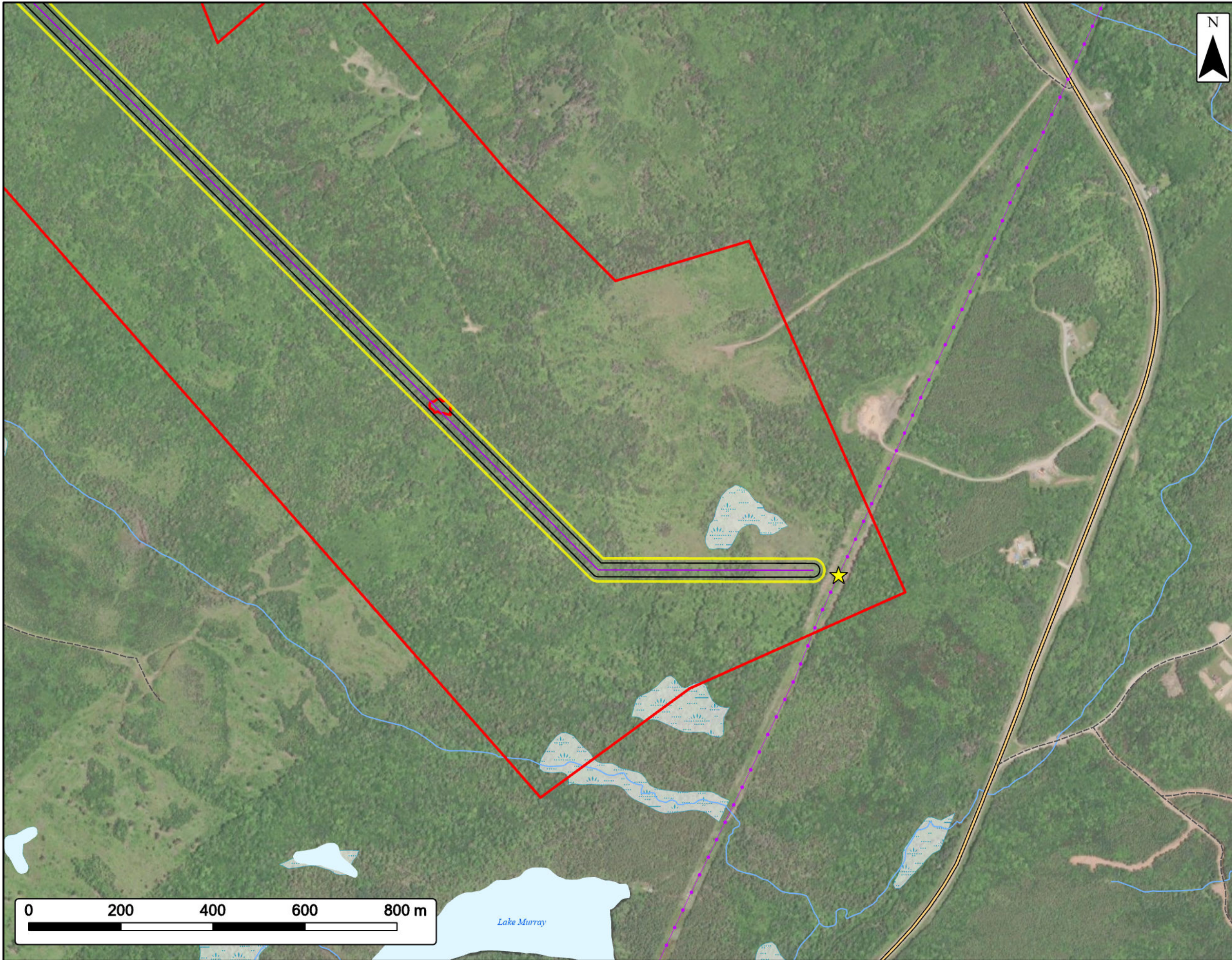


Coordinate System: NAD83 UTM Zone 20N Sources: ESRI Basemaps, GeoNOVA, SNSIS, NSNRR, ACCDC, IBA Canada, CNWI, HERE, Garmin, USGS

Date:	Oct 2024	Project #:	24-9952
Scale:	1:8,000	Drawing #:	<b>2.3F</b>
Drawn By:	K. Wallace		
Checked By:	H. Mosher		







**Rhodena Wind Farm**  
Infrastructure



Study Area	
Assessment Area	
Project Footprint	
Interconnection point	
Transmission Line	
<b>Utilities (line)</b>	
Existing Transmission Lines	
<b>Transportation</b>	
Trans-Canada Highway	
Unpaved Road	
<b>Water Features</b>	
Mapped Stream	
Mapped Lakes and Rivers	
Mapped Wet Areas	



Coordinate System: NAD83 UTM Zone 20N Sources: ESRI Basemaps, GeoNOVA, SNSIS, NSNRR, ACCDC, IBA Canada, CNWI, HERE, Garmin, USGS

Date:	Oct 2024	Project #:	24-9952
Scale:	1:8,000	Drawing #:	<b>2.3G</b>
Drawn By:	K. Wallace		
Checked By:	H. Mosher		

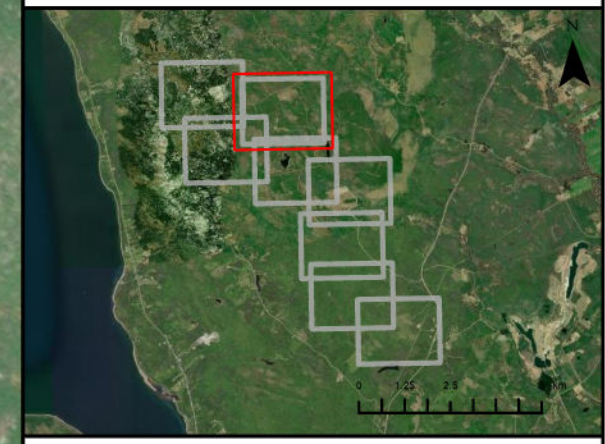




**Rhodena Wind Farm**  
Infrastructure



Study Area	
Assessment Area	
Project Footprint	
Proposed Turbine Location	
Substation	
Existing Road to be Upgraded	
Proposed New Road	
Collector Line	
Transmission Line	
<b>Transportation</b>	
Unpaved Road	
<b>Water Features</b>	
Mapped Stream	
Mapped Lakes and Rivers	
Mapped Wet Areas	



Coordinate System: NAD83 UTM Zone 20N Sources: ESRI Basemaps, GeoNOVA, SNSIS, NSNRR, ACCDC, IBA Canada, CNWI, HERE, Garmin, USGS

Date:	Oct 2024	Project #:	24-9952
Scale:	1:8,000	Drawing #:	<b>2.3H</b>
Drawn By:	K. Wallace		
Checked By:	H. Mosher		

